

# Finch-Kennedy GO Station: Noise Wall Construction

October 28 - February 6, 2025\*

\*Dates subject to change due to unforeseen circumstances or inclement weather.

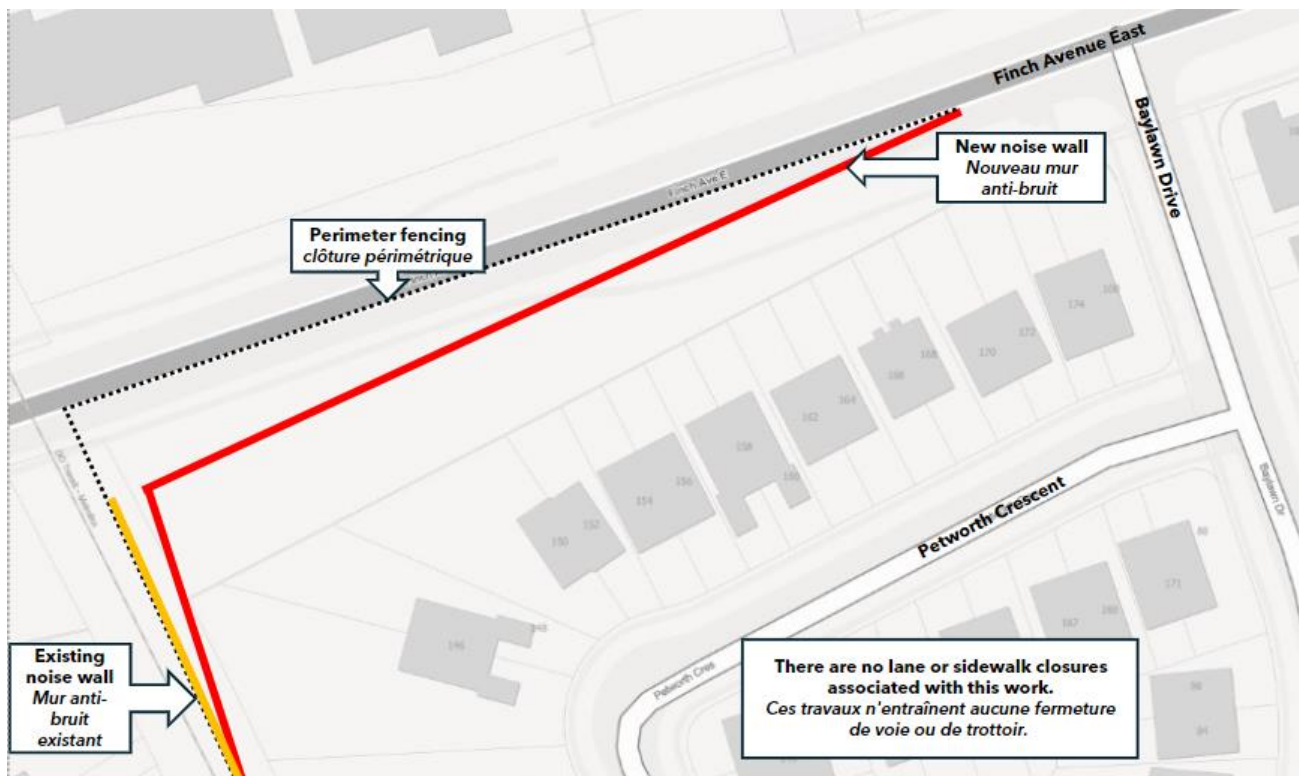


Figure 1: Map representing location of work, as well as perimeter fencing at site. Not to scale. For illustrative purpose only. Metrolinx image.

## What Is Happening

As part of preparatory works at the site of the future Finch-Kennedy GO Station and a temporary road detour on Finch Avenue East, Metrolinx will be removing and replacing an existing noise wall within the Stouffville GO rail corridor (see Figure 1, yellow line), and constructing a new noise wall along Finch Avenue East, west of Baylawm Drive (see Figure 1, red line). Perimeter fencing will also be installed to mark the work zone (see Figure 1, dashed black line).

This work will include activities such as backfilling, excavations, drilling, and the installation of new noise wall foundations and panels. Overnight work will be required for construction taking place within the rail corridor.

## Project Overview

SmartTrack is bringing five new GO stations to Toronto, leveraging roughly 40 km of Metrolinx's pre-existing GO rail corridors within Toronto. The program is a collaboration between the Province of Ontario, City of Toronto, and Metrolinx that will transform heavy rail infrastructure in Toronto from a regional commuter service into an urban rapid transit network, expanding your local network, creating new possibilities, and bringing you improved access to locations across the city.

SmartTrack Finch-Kennedy GO Station will be located on Finch Avenue East between Milliken Boulevard and Midland Ave on the Stouffville line.

## WHAT TO EXPECT

- This work will include the removal of an old noise wall within the rail corridor and the construction of a new noise wall in the rail corridor and along Finch Avenue East.
- Noise, dust, and vibration: There will be some impacts related to noise, dust, and vibration, primarily due to the excavation and drilling work.
- Metrolinx will implement all reasonable measures to mitigate these impacts, including monitoring noise levels, dust control, and muffled equipment.

## HOURS OF WORK

- Work will occur overnight between the hours of 8:00 PM and 5:00 AM, as well as during regular daytime hours.

## LOCATION OF WORK

- This new noise wall will be installed within the Stouffville GO rail corridor and along Finch Avenue East, west of Baylawn Drive.

## PEDESTRIAN DETAILS

- Fencing will be installed along the perimeter of the work zone but will not block existing sidewalks or walking paths.

## TRAFFIC DETAILS

- A traffic management plan will be in place to guide drivers past the site.

## TRANSIT INFORMATION

- There will be no impacts to GO or TTC service in this area.

## COMMUNITY ENGAGEMENT

- Metrolinx has a dedicated community engagement team in place that works with residents and businesses in the Toronto East area.
- If you have any questions, please contact us using the information provided below.

Information as of: **October 15, 2024**

This notice can be translated into a different language upon request by emailing us at: [TorontoEast@metrolinx.com](mailto:TorontoEast@metrolinx.com)

Veillez trouver l'avis de construction en français ici: [www.metrolinx.com/stouffville-docs-fr](http://www.metrolinx.com/stouffville-docs-fr)

### Contact Us:

- 📞 Call us: **416-202-6911**
- ✉ Write to us at: [www.metrolinx.com/torontoeast](http://www.metrolinx.com/torontoeast)
- ✂️ 📷 Find us on X and Instagram [@GOExpansion](https://www.instagram.com/GOExpansion)
- 🌐 Visit the website: [www.metrolinx.com/finchkennedy](http://www.metrolinx.com/finchkennedy)
- 🌐 Subscribe to our e-blast: [www.metrolinx.com/subscribe](http://www.metrolinx.com/subscribe)