

Hurontario Light Rail Transit Project

Construction Liaison Committee

Mississauga North &
Brampton South

SEPTEMBER 2021



LAND ACKNOWLEDGEMENT

Let us take a moment to acknowledge that we are on the traditional territory of Indigenous Peoples including the Anishnabeg, the Haudenosaunee and the Wendat peoples.

We are all Treaty people. Many of us have come here as settlers and immigrants... in this generation or generations past.

Metrolinx declares its commitment to building meaningful relationships with Indigenous Peoples.

We acknowledge we have a responsibility to recognize and value the rights of Indigenous Peoples and conduct business in a manner that is built on the foundation of trust, respect and collaboration.

We acknowledge the historic and continued impacts of colonialization, the many broken promises and Treaties, and the need to work towards reconciliation with the original caretakers of this land... today and for future generations.

OUR MANDATE

The Construction Liaison Committee is a communications forum to provide open, two-way communication and dissemination of information with stakeholders, elected officials, area residents and businesses related to construction for the Hurontario Light Rail Transit Project including construction activities, short- and long-term impacts, steps being taken to address impacts and community engagement and outreach.

AGENDA: SEPTEMBER 2021

Welcome & Introductions

Safety Moment

Construction Overview

Construction Update Mississauga North

Construction Update Brampton South

Community Engagement

Round Table Discussion



Safety Moment

EMERGENCY RESPONSE DRILLS

Safety is at the core of everything we do.

The Mobilinx team conducts regular emergency response drills, to ensure everyone knows what to do if something unexpected occurs.

These drills allows us to better prepare staff for the potential threats of working in highly populated areas so they can protect themselves and the public.

Mobilinx also conducts regular hazard assessments and uses the feedback provided by supervisors to proactively evaluate potential threats on the job site and make safety improvements.

The emergency response drills are just one example of what we're doing to keep both staff and the community safe.

As a result, we have over one million hours of work without a lost time injury on the Hurontario LRT project.





35002

MAZDA3
2019

CPWY

Wobilinx

CONCRETE CURB

Safety in the Community

SAFETY IS A SHARED RESPONSIBILITY

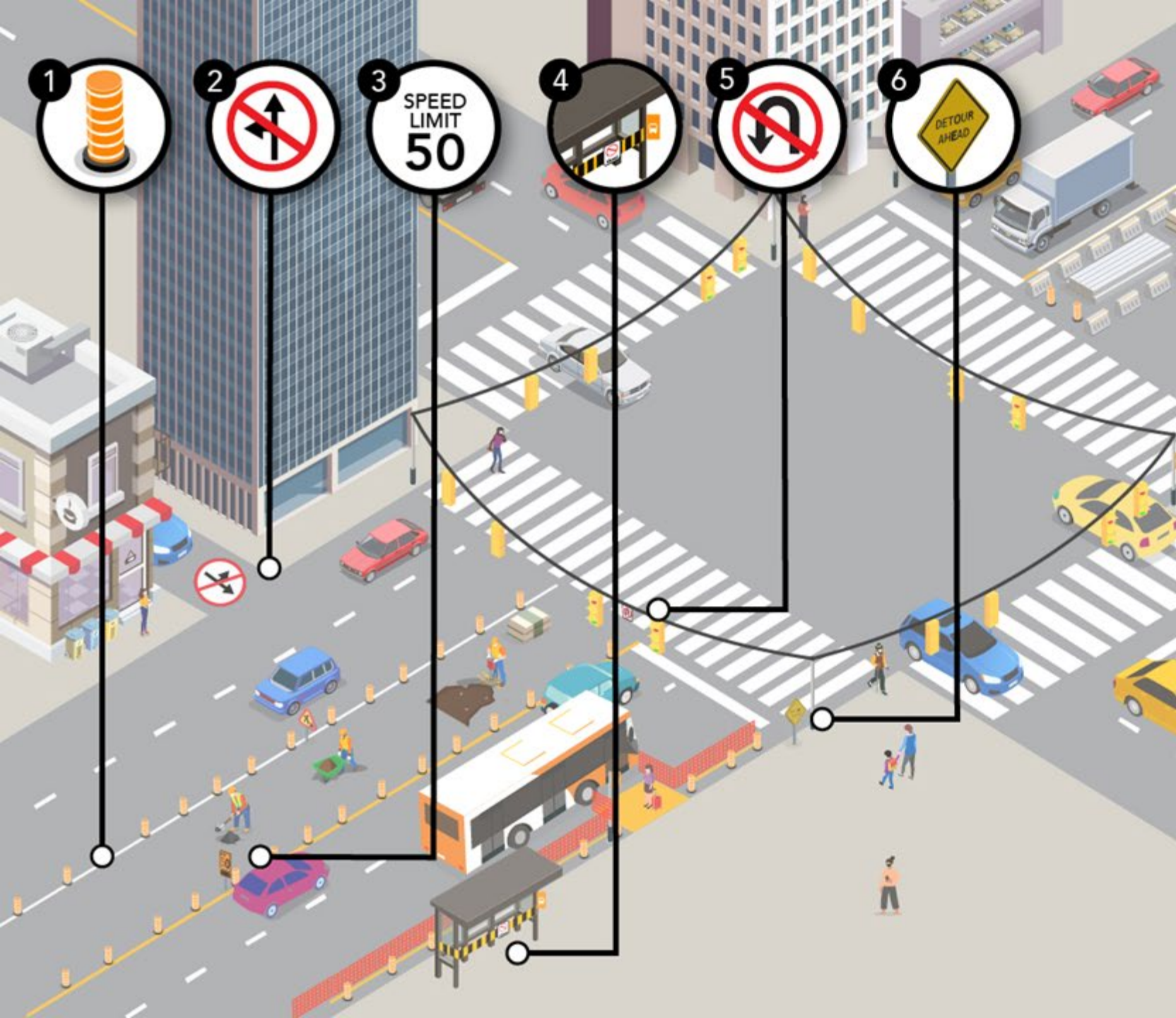
Much like it takes a village to raise a child, it takes an entire community to ensure that everyone makes it home safe each day.

As a shared responsibility, we each have our part to play to ensure that our construction sites are safe for workers as well as the broader public travelling around active construction zones.

Part of our responsibility is ensuring our construction sites are clean, secure, and have clear signage to caution the public about potential hazards and safely direct them around active work zones.

The public also has a responsibility to pay close attention and adhere to the directions on signage we post around our sites. Only through a cooperative effort can we build and behave safely.





SAFETY AROUND CONSTRUCTION

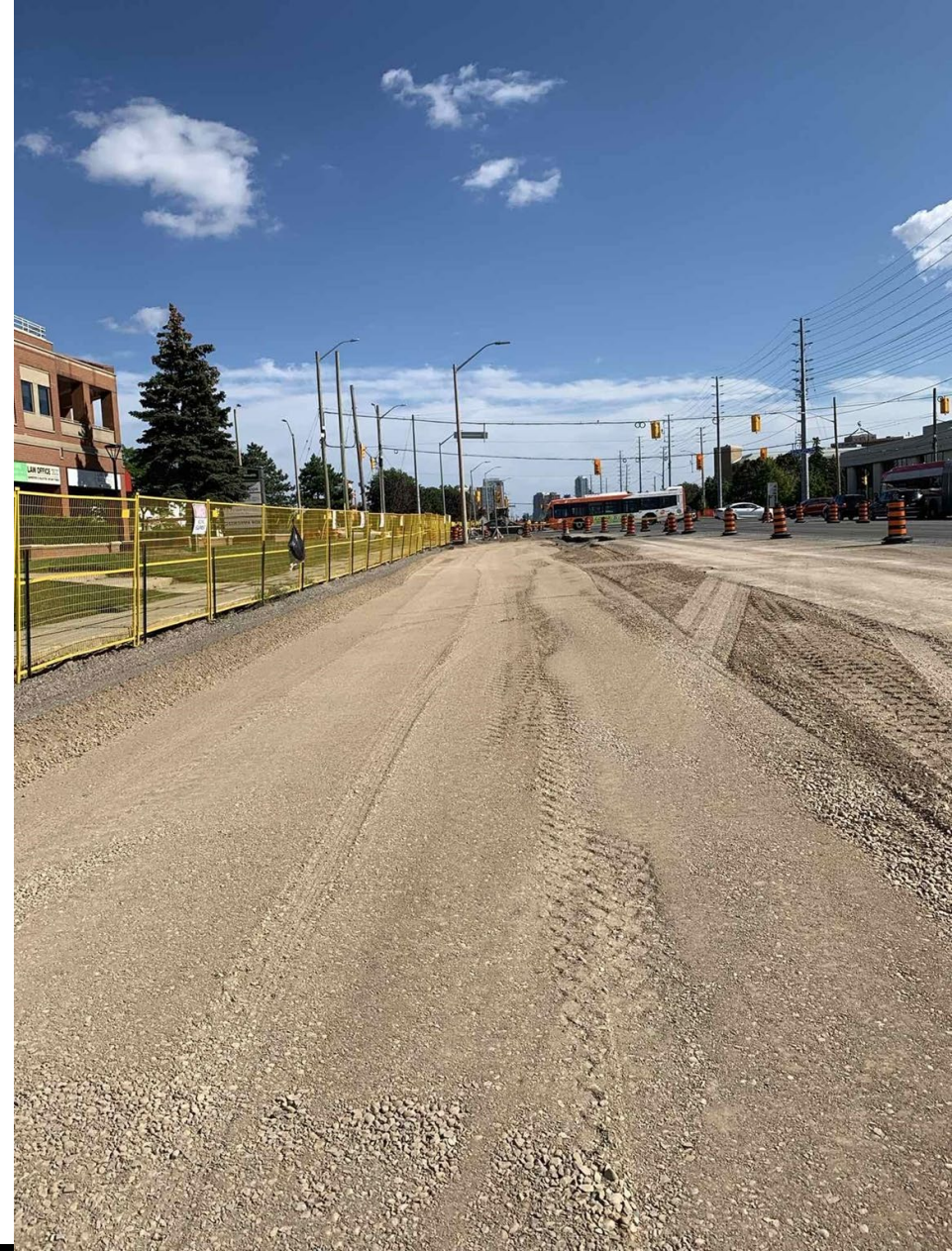
- 1 Traffic barrels guide motorists around construction sites**
Traffic barrels indicate areas of active construction, do not cut through, move or relocate barrels.
- 2 No left turns permitted**
Left hand turns are prohibited in some areas along Hurontario Street due to construction. Signs will indicate turning restriction for motorists where applicable.
- 3 Be mindful of speed limits**
Speed limits are reduced to 50km near active construction sites to protect onsite workers.
- 4 Temporary bus platforms have been installed**
During construction, temporary bus boarding platforms have been installed for your safety. Wayfinding and bus stop markers direct passengers to the stop location.
- 5 No U-turns permitted**
U-turns are prohibited near active worksites for the safety of you and your passengers. Please pay close attention to signage prohibiting U-turns.
- 6 Pay attention to detours**
Signs directing pedestrians and cyclists safely around work zones have been placed near active construction sites.

Construction Progress

CONSTRUCTION PROGRESS

Completed

- ✓ Excavation, shoring to “Push Box” level for the station stop at Port Credit GO Station – Mississauga South*
- ✓ Poured north and south flood walls at Mary Fix Creek (1st Section)– Mississauga South
- ✓ Eaglewood Ave road closure – Sanitary and watermain relocation - Mississauga South
- ✓ Enbridge gas main relocation at Queensway - Cooksville
- ✓ Construction of the roof, canopy steel, exterior masonry back-up walls, ground floor slabs and door frames – OMSF
- ✓ Enbridge gas main relocation John Street-Cooksville
- ✓ Temporary traffic signals completed-Mississauga Centre and Mississauga South
- ✓ 75% of temporary traffic signals completed on the entire corridor
- ✓ Demolition of one existing parking lot bridge at Mary Fix Creek – Mississauga South
- ✓ Tree protections – Mississauga South
- ✓ Geotechnical tests – Brampton

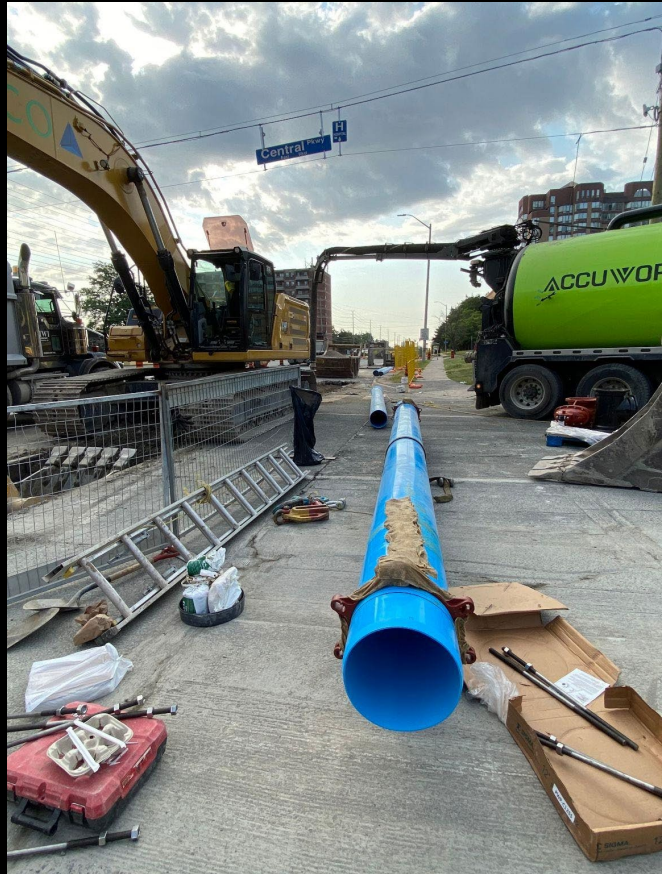




Road widening-Mississauga North



Utility relocations begin on Rathburn Road-Mississauga Centre



Water main crossing in Cooksville

CONSTRUCTION PROGRESS

Ongoing

- Construction of base slab and launch slab for Push Box-Lakeshore West Structure
- Excavation to platform level-New Port Credit Station
- Poured north and south flood walls at Mary Fix Creek (2nd Section)- Mississauga South
- Installation supporting piers for the new West Bridge at Mary Fix Creek-Mississauga South
- Installation of sanitary, watermain, and storm sewer lines-Mississauga South and Mississauga North
- Installation of watermain-Mississauga Cooksville
- Installation of sanitary-Mississauga Centre
- Alectra relocations-Mississauga South and Mississauga North
- Removal of the last 2km of medians along the entire corridor – 9km complete as of June
- Installation of temporary bus platforms along the entire corridor – 25 installed to date
- Tree removals-Mississauga South
- Installation of temporary traffic signals –Mississauga North and Brampton
- Road widening and curbs – Mississauga North
- One-way configuration at Topflight due to Utility Relocation – Mississauga North
- Environmental Boreholes-Brampton
- Installation of the foundation and wing walls of the Etobicoke Creek structure– OMSF
- Installation of new utilities, mechanical, and electrical infrastructure - OMSF





Stormwater infrastructure relocations-Mississauga North



Traffic safety measures-Mississauga South



Sanitary infrastructure relocations-Mississauga North

CONSTRUCTION UPCOMING

Mississauga South – October 2021

- Short term, road closure of Eaglewood Drive (Early October)
- Road widening and curbs
- Alectra relocations-Mississauga South
- Installation of watermain, sanitary and storm (Potential nighttime work, temporary driveway closures)
- Tree removals
- Pushbox construction to form tunnel under Lakeshore West rail bridge

Cooksville – October 2021

- Tree protections and removals
- Temporary Bus Platforms installation
- Utility Relocations – Watermain, sanitary and storm
- Road widening (Potentially in November 2021)

Mississauga Centre – October 2021

- Tree protections and removals
- Utility Relocations
 - – *Watermain and storm on Hurontario*
 - -*Watermain and sanitary along Rathburn*
- Construction to build elevated guideway on Rathburn Road West*



PRIVATE PROPERTY IMPACTS

As we deliver new and exciting transit, streetscaping improvements are coming to the communities along the project corridor including:

- Improved landscaping and beautification to the surrounding natural environment
- New sidewalks, Multi-Use Paths, as well as bike lanes to help promote active modes of transportation, in many areas along the corridor.
- Upgrades to the existing utilities along the corridor, ensuring reliable services to residents and businesses.
- Reconfigured roadway to retain existing number of traffic lanes during the operation of the LRT.

In order to make way for these new improvements, we have been engaging with adjacent property owners to resolve items that are in direct conflict with our works as well as requesting their permission to enter (PTE) to mitigate the impact of construction on their property. Reasons for our private property outreach includes :

- Coordinating the removal of items that encroach onto the municipal right of way
- Requesting PTEs to regrade a portion of their land, walkway, or driveway to prevent storm water from pooling on their property
- Requesting PTEs for the protection, pruning, or removal of trees based on an arborist's recommendation.

Where applicable, we often meet on site with property owners to discuss the impacts of construction to their property and are transparent in our commitment to work with them to minimizing these impacts. This ensures that the impacts are understood, the property owners are respected and are equipped to make the most informed decision based on the facts presented to them.



Mississauga North

MISSISSAUGA NORTH WORK ZONES

Work Zone 10 – Eglinton Avenue to Matheson Boulevard

Work Zone 11 – Matheson Boulevard to Britannia Road

Work Zone 12 – Britannia Road to Madill Boulevard

Work Zone 13 – Madill Boulevard to Derry Road

Work Zone 14 – Derry Road to Highway 407 South Ramp



CONSTRUCTION PROGRESS - ALIGNMENT

Completed

Work Zone Eleven to Fourteen

- Tree protections and removals
- 800m of brand-new cable to power the LRT
- 72 new hydro poles installed
- 100m of telecom cable installed
- 2000m of hydro duct banks installed

Work Zone Eleven

- Watermain relocation (1.3 kms) and stormwater (700 m) on the east side of Hurontario Street (Matheson Boulevard to Britannia Road)

Ongoing

Work Zone Fourteen

- Watermain installation continues at Topflight and Edwards
- Two-way traffic will be reinstated on Topflight by the week of Sep.23rd

Work Zones Eleven to Fourteen

- Alectra relocations continue
- Road widening continues

Upcoming (three-month window)

Work Zone Ten

- Stormwater relocations begin between Eglinton and Matheson

Work Zone Eleven to Fourteen

- Road widening and curbs
- Civil works for track works expected to begin
- Hwy.401 underpass bridge deck rehab

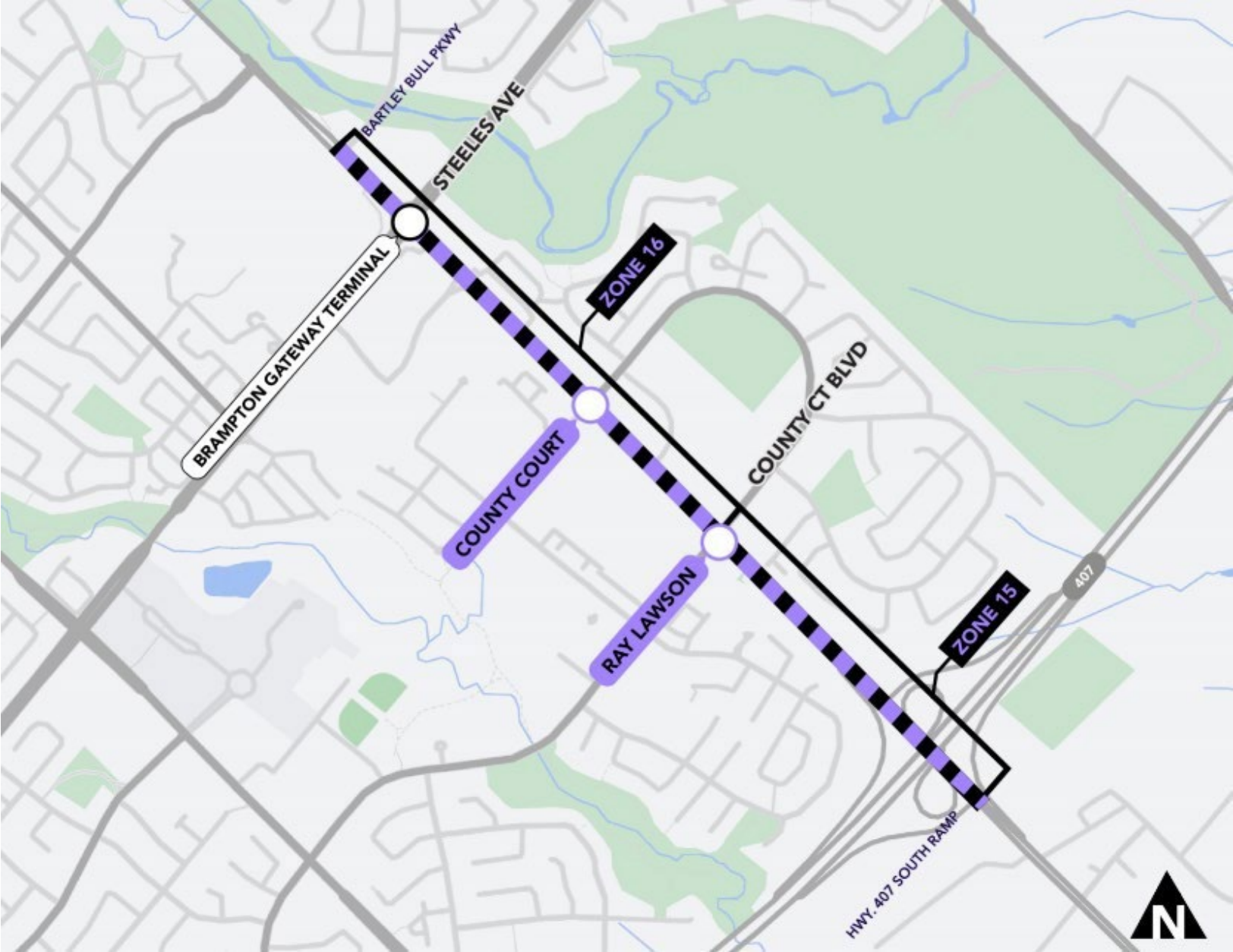


Brampton South

BRAMPTON SOUTH WORK ZONES

Work Zone 15 – Highway 407 (South Ramp)
to County Court Boulevard

Work Zone 16 – County Court Boulevard to
Bartley Bull Parkway



CONSTRUCTION PROGRESS - ALIGNMENT

Completed

Work Zone Fifteen and Sixteen

- 1617m of medians removed
- 38 Geotechnical and SUE Tests

Upcoming (three-month window)

Work Zone Fifteen and Sixteen

- Installation of temporary traffic signals
- Removal of remaining medians
- Tree protections
- Staging begins for utility relocations – Watermain, sanitary and stormwater



CONSTRUCTION PROGRESS - OMSF

OMSF Yard - Completed

- Track subbase preparation
- Etobicoke creek foundation and wingwall works

OMSF Yard - Upcoming activities (next 6 to 8 weeks):

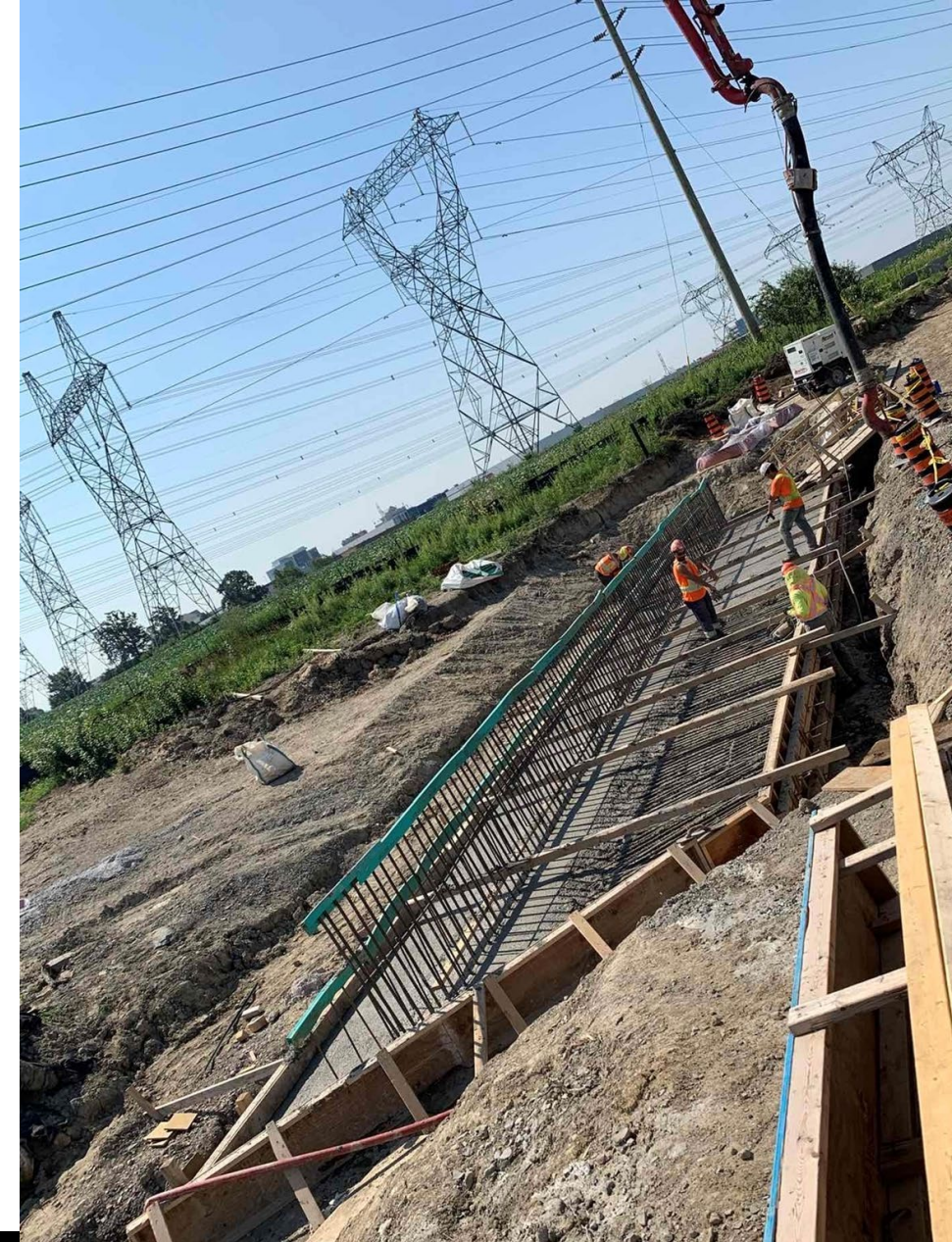
- Sub-ballast installation
- Utility service connection on Kennedy Road (Sanitary, watermain).
- OCS foundation works
- Underground duct bank and electrical works
- Etobicoke creek precast installation
- Etobicoke creek landscape

OMSF building – Ongoing activities

- Fireproofing
- Stair installation
- Maintenance pit foundation walls
- Wash bay facility foundation installation

OMSF building – Upcoming

- Concrete slab on grade works





Construction Activities at the OMSF Facility on Kennedy Road, Brampton

Communications Engagement

COMMUNITY ENGAGEMENT

Community Engagement staff are out in the public speaking to residents and businesses where and when it makes sense while following all COVID 19 guidelines to keep ourselves and members of the community safe.

July

- Mayors of Mississauga and Brampton and Metrolinx CEO tour the corridor
- Re-opening both Community Offices to the public on a by-appointment basis
- Summer 2021 Community Canvass begins!
- Onsite meetings - Vegetation impacts Mississauga South

August

- Community Canvass - 3,500 total doors knocked
- Onsite meetings - Vegetation impacts Mississauga South + Cooksville
- Activation at the Port Credit Classic Car Show raising awareness of an overnight Hurontario Street Closure
- Minister Mulroney, Minister Sarkaria, Metrolinx CEO and local MPPs tour Port Credit and Cooksville GO and the OMSF.

September

- Onsite meetings - Vegetation impacts and enrichments Mississauga South & Cooksville



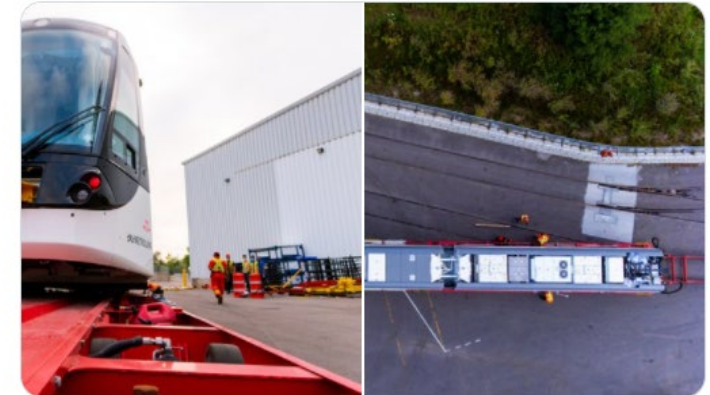
Hurontario LRT @HurontarioLRT · Sep 10
Crews are onsite at Rathburn Rd between the Hurontario overpass & Duke of York Blvd setting up staging ahead of utility relocations starting next week. Remember to plan your route ahead of time & to slow down when approaching construction. Learn more: bddy.me/3nkH7Km



1 12



Hurontario LRT @HurontarioLRT · Aug 16
Our #MachineCrushMonday is none other than the light rail vehicle! This one was heading from the @AlstomCanada Facility in #Brampton to @FinchWestLRT MSF facility.



4 21

COMMUNITY ENGAGEMENT UPDATE

Questions?

Ask us at metrolinxengage.com

Or contact us by phone, email, or on social media

For More Information

Stay up to date with Metrolinx projects in your region!
Metrolinx.com/peel

Hurontario LRT Community Offices

Phone: 416-202-7500

Email: peel@metrolinx.com

3024 Hurontario Street unit G12
Mississauga, ON. L5B 4M4

17 Ray Lawson Blvd unit 9
Brampton, ON. L6Y 5L7



@HurontarioLRT

Sign Up

for Peel Region updates and more from Metrolinx

Email*

Subscribe

Subscribe for the latest news from Metrolinx. You can unsubscribe at any time. Your personal information is being collected under the authority of the Metrolinx Act, 2006 in order to provide you with email communications about Metrolinx services.

For questions, contact: Manager, Customer Contact, Metrolinx, 20 Bay St, Toronto, ON, M5J 2W3, (416) 869-3600.

Round Table Discussion



APPENDIX A: GLOSSARY OF CONSTRUCTION TERMS

Term	Definition
Culvert	Culverts are small channels that allow water to run under a road or railroad structure.
Wet Utilities	Examples of wet utilities are sanitary, storm water (rainwater), water main (potable water, fire hydrants)
Dry Utilities	Examples of dry utilities are power, underground conduits, fiber optics (telecommunications).
Guideway	The guideway is the structure the LRVs will operate at the HWY 403 crossing. This includes steel tracks, the concrete pads for tracks, and OCS poles. The elevated guideway is a structure with tracks raised above the street level, and civil works for the guideway includes anything below the grade of the guideway (duct banks for electrical cables, drainage etc.)
Roads, Curbs, Sidewalks	This involves preliminary works including drainage, catch basins, temporary paving, new curbs, sidewalks, and boulevards etc. Final paving and reinstatement occur as a part of the final landscaping and design package.
Push Box	An innovative method which uses hydraulic jacks & spreaders to move a cast-in-place concrete box carrying the entire underpass in a short period of time. It causes minimal disruption to surrounding traffic.
RSS/Retaining Wall	Retained Soil Systems Wall. The purpose of this wall is to retain soil in order to protect a change in grade.
Track works	Track works are at grade.