

Ontario Line

Corktown/Don Yard Construction Liaison Committee

September 26, 2024



Agenda

Welcome

- Introductions
- Land Acknowledgement
- Safety moment

Presentation

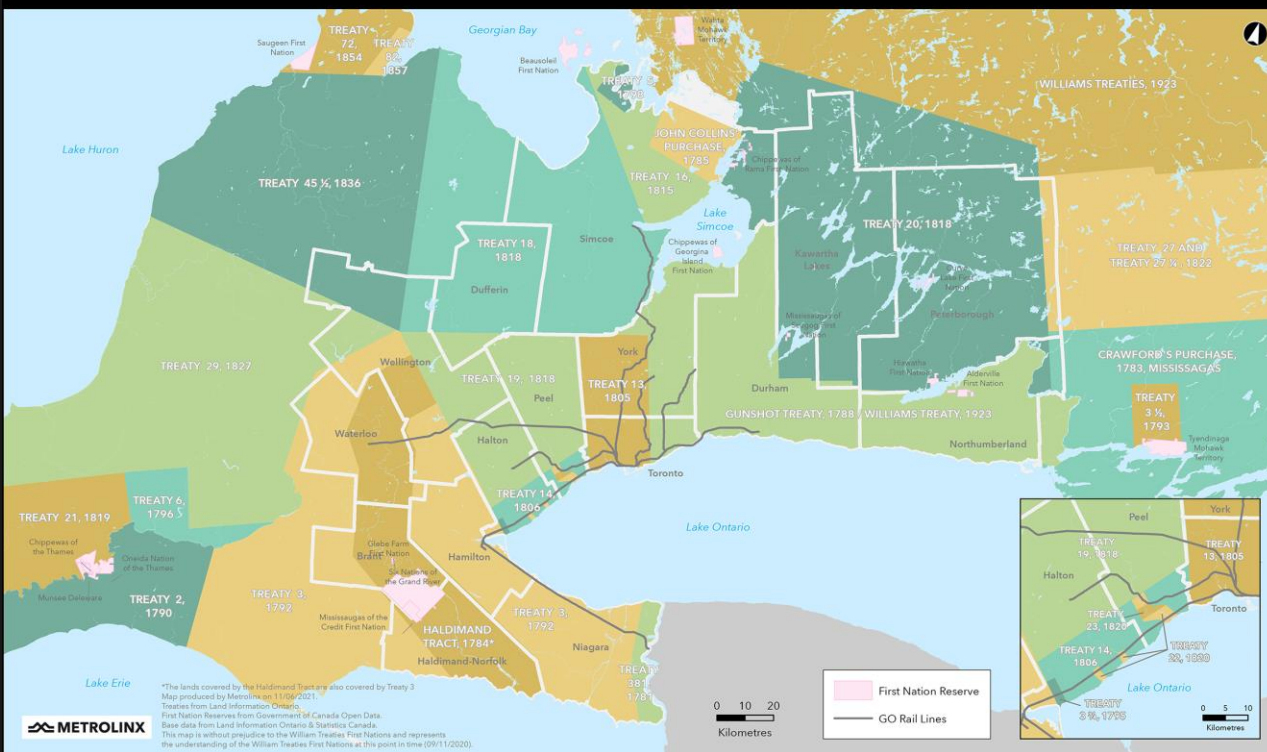
- Review of Action Items
- Don Yard Works
 - Construction Updates
- Corktown Station
 - Construction Updates, FOCUS: excavation
- Community Artwork
- Community Engagement
- We Are Here For You

Q/A and Discussion



LAND ACKNOWLEDGEMENT

Treaties and Reserves in the Greater Golden Horseshoe



Let us take a moment to acknowledge we are on lands that have been, and continue to be, home to many Indigenous Peoples including the Anishnabeg, the Haudenosaunee and the Huron-Wendat peoples.

We are all Treaty people. Many of us have come here as settlers, as immigrants or involuntarily as part of the trans-Atlantic slave trade, in this generation, or generations past.

We acknowledge the historic and continued impacts of colonization and the need to work towards meaningful reconciliation with the original caretakers of this land.

We acknowledge that Metrolinx operates on territories and lands covered by many treaties that affirm and value the rights of Indigenous communities, Nations and Peoples.

We understand the importance of working towards reconciliation with the original caretakers of this land. At Metrolinx, we will conduct business in a manner that is built on a foundation of trust, respect and collaboration.

Safety Moment – Navigating safely through school zones

Let's all do our part to ensure everyone stays safe during the busy back-to-school season, especially in areas near ongoing construction.

1. **Watch for Construction Vehicles:** Be aware of activity near construction zones, especially during school drop-off and pick-up times. Large vehicles may have blind spots, so maintain a safe distance.
2. **Obey Traffic Signs and Signals:** Follow all posted signs and signals in and around construction zones, especially in school zones. Reduced speed limits and temporary detours are in place to keep everyone safe.
3. **Use Designated Crosswalks:** Teach children to use designated crosswalks and avoid shortcuts through construction areas. Construction sites can have hidden hazards.
4. **Stay Alert:** Avoid distractions like phones while driving or walking near construction sites. Be especially cautious around areas where children are present.
5. **Plan Your Route:** Allow extra time for your commute and consider alternate routes to avoid construction zones during peak school hours.



JULY - AUGUST CLC ACTION ITEMS - COMPLETED

#	ACTION ITEM	RESPONSE	STATUS
1	OTG to provide report on findings from artwork survey and detail implementation plan at the September CLC	OTG will provide an update during today's CLC.	Completed

JULY - AUGUST CLC ACTION ITEMS - PENDING

#	ACTION ITEM	RESPONSE	STATUS
1	Metrolinx to provide ongoing updates to MPP-Wong Tam's office with any new efforts to minimize and mitigate noise from the Don Yard works.	Metrolinx and its contractor are working to minimize and mitigate noise where possible, and updates will be shared routinely with elected officials' offices.	Ongoing
2	Metrolinx to provide updates from the East Harbour team on the bridge and multiuse path at a future CLC.	A member of the East Harbour team will be present at the next CLC to provide information updates. More information will be shared when available.	In progress
3	Metrolinx to escalate weeds/boulevard maintenance issue to the City of Toronto	Metrolinx has escalated the issue to the City, who are inspecting and addressing the cleanup.	In progress

JULY - AUGUST CLC ACTION ITEMS - PENDING

#	ACTION ITEM	RESPONSE	STATUS
4	Metrolinx to provide update on station naming process.	Metrolinx confirmed there will be a formal feedback process so community members can give their opinions on the station name they prefer. This process is expected to kick-off in the Fall 2024. In the meantime, community members can submit their preferred names to ontarioline@metrolinx.com	Pending
5	Metrolinx to look at incorporating certain best practices from LSE JC CLC's including action items and noise and vibration exceedances	Metrolinx is now tracking both completed and pending action items for CLCs, drawing from best practices at the LSE CLC. Reporting on Noise and Vibration exceedances is still a work in progress and will be shared at a future CLC	N&V reporting pending

Don Yard Construction Update



Completed Work

West Bridge Foundation (Caisson Drilling)



- The West bridge caisson work was recently completed. This work involved using drill rigs and concrete trucks to build the bridge foundation west of the Don River.

Ongoing Work

Tunnel and Subway Portal Construction



Through
Summer 2025

- Piling, excavation, drilling and concrete work.
- Piles are being installed to support the excavation of the tunnel and portal.
- Piling work is currently ongoing and excavation work is expected to start in mid-November.

Bridge Trestle Construction



Through
Winter 2025

- Ongoing construction of a temporary support structure in the Don River to support bridge construction. This work will take place during the day.
- The bridge trestle installation will start after the HONI monopole tower is up.

Upcoming Work

Hours of work:

- Work is currently taking place Monday – Friday from 7 a.m. – 11 p.m. and Saturdays during the day.
- Hours of work may vary based on each activity and work progress.

October

- Continue excavating, drilling, and concrete works for portal and tunnel construction
- Ongoing building of bridge supports
- Complete west abutment concrete work
- Start building the reveal for the new hydro-one transmission tower

November

- Ongoing excavation inside the 'cut and cover' tunnel
- Installation of tiebacks to South Wall
- Drilling of secant piles on North Wall
- Start jet grouting program, to strengthen tunnel ground conditions
- Install HONI monopole
- Wrapping up concrete work to west abutment
- Installation of bridge trestle superstructure and construction of north trestle temporary abutment and access ramp (out of water)

December

- Ongoing construction of access ramp to north trestle
- Ongoing installation of trestle substructure and superstructure
- Ongoing assembly and installation of HONI monopole

January

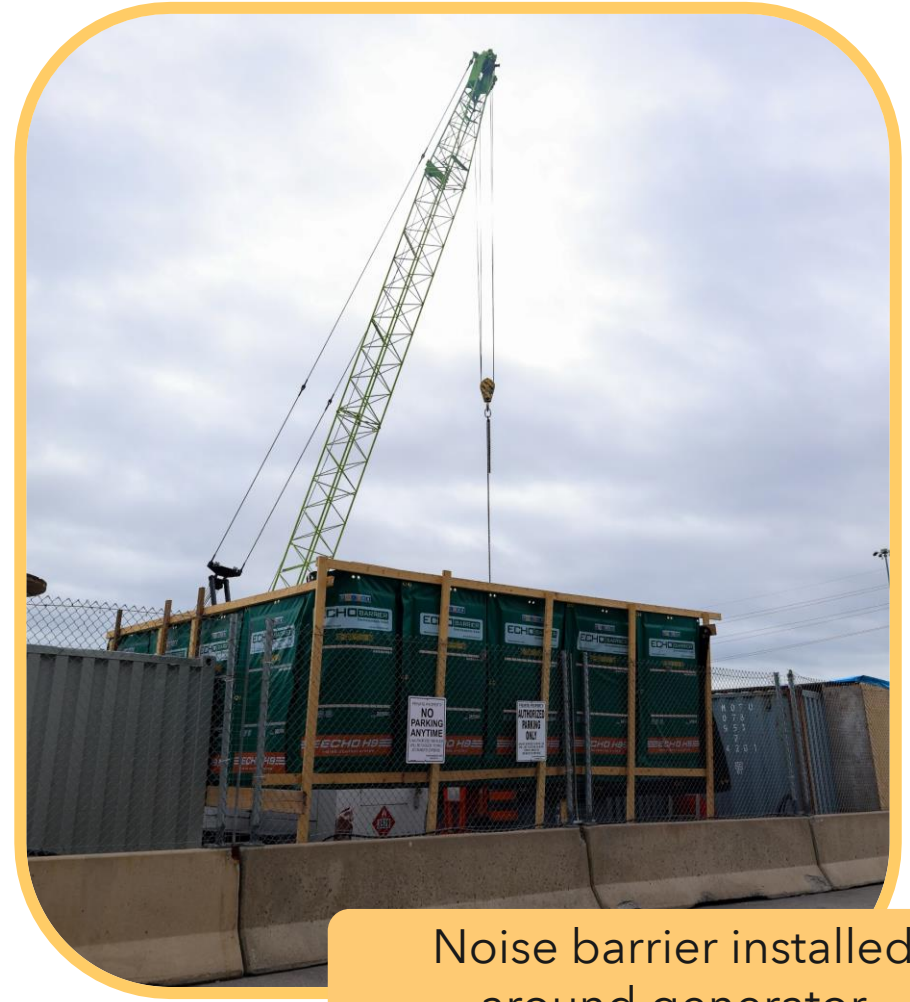
Multiple drill rigs will be on site during the tunnel and portal construction



Bridge Caisson Grounding Installation

Construction Mitigations: Noise

- **Noise Barriers:** Wherever possible, noise barriers are installed around equipment
- **Spoil Removal:** Using an alternative methods to remove soil from the auger to reduce banging noises from auger shaking
- **Work Schedules:** Scheduling quieter work overnight and on weekends
- **Drilling Hours:** Pile drilling is currently limited to Monday through Friday, from 7 a.m. to 11 p.m.
- **Good Neighbor Practices:** On-site staff is trained to place materials down gently to avoid loud noises.
- **Monitoring:** Noise and vibration levels are monitored closely, and exceedances are addressed. Additional spot checks on monitoring data are performed to ensure compliance.



Noise barrier installed around generator

Construction Mitigations: Air Quality and Dust

- **Monitoring:** Access roads and work areas are continuously monitored. Water trailers with spray jets and daily street sweepers are used to keep dust down.
- **Dust Control:** Augured materials (dry spoils) are manually wetted using hoses and water totes to reduce dust clouds.
- **Air Quality Checks:** Multiple air monitors are routinely checked on-site to identify any exceedances.
- **Dust Suppressant:** A dust suppressant solution (beet juice) is applied to the access ramp. This binds with materials to create a cohesive layer that prevents dust generation.
- **Vehicle Cleaning:** A comprehensive wheel wash station is installed to clean the sides, underbodies, and tires of all vehicles before they leave the site.
- **Paved Exit:** The exit lane leading onto Mill Street is paved, ensuring that trucks can drive on an asphalt surface after washing, which helps minimize dust.



Road washing and on-site water application

Corktown Construction Update



Works in Progress – North site

- Capping beam installation (rebar / formwork / concrete pours)
- Site servicing (frost protection / temporary power)
- Site staging for next phases of work



Capping beam ready for tie-back supports near King St E

North Site

September 19, 2024



Works in Progress – South site

- Piling works nearing 88% completion.
 - Current forecast estimates piling completion in the south shaft mid-October.
- Storage of the salvaged bricks from the First Parliament blocks
- Site services (drainage)



First Parliament block bricks tagged and secured

South Site

September 19, 2024



Corktown 2024 construction lookahead

Major construction milestones to propel the Ontario Line subway forward

Site	Timeline	Activity
North	Summer/Fall 2024	<ul style="list-style-type: none">• Capping beam• Tie-back anchors• Strut & walers installation
	Fall/Winter 2024	<ul style="list-style-type: none">• Strut & walers installation• Tie-back anchors• Shaft excavation
South	Summer/Fall 2024	<ul style="list-style-type: none">• Piling• Shaft excavation• Strut & walers installation
	Fall/Winter 2024	<ul style="list-style-type: none">• Shaft excavation• Strut & walers installation

**Dates subject to change based on unforeseen circumstances*

Focus on: Station Excavation

EXCAVATION SCHEDULE

- Excavation works expected to begin at the **north and south sites as early as mid-October 2024.***
- **Multiple phases** of excavation work will continue through Winter 2025.

For excavation, work hours will vary based on the type of construction:

- The primary work hours for excavation taking place during the day between 7:00 a.m. and 7:00 p.m. (Monday - Friday).
- Additional shifts, including Saturdays, may be added as work requires. Work hours and timeframes are subject to change as the needs of construction change.

**Dates subject to change based on unforeseen circumstances*



Example of shaft excavation and walers and struts installation.

WHAT IS EXCAVATION?

Excavation is the removal of earth and rock to create space for construction. Crews utilize heavy machinery used to remove soil and layers of rock.

Excavation and Support Installation

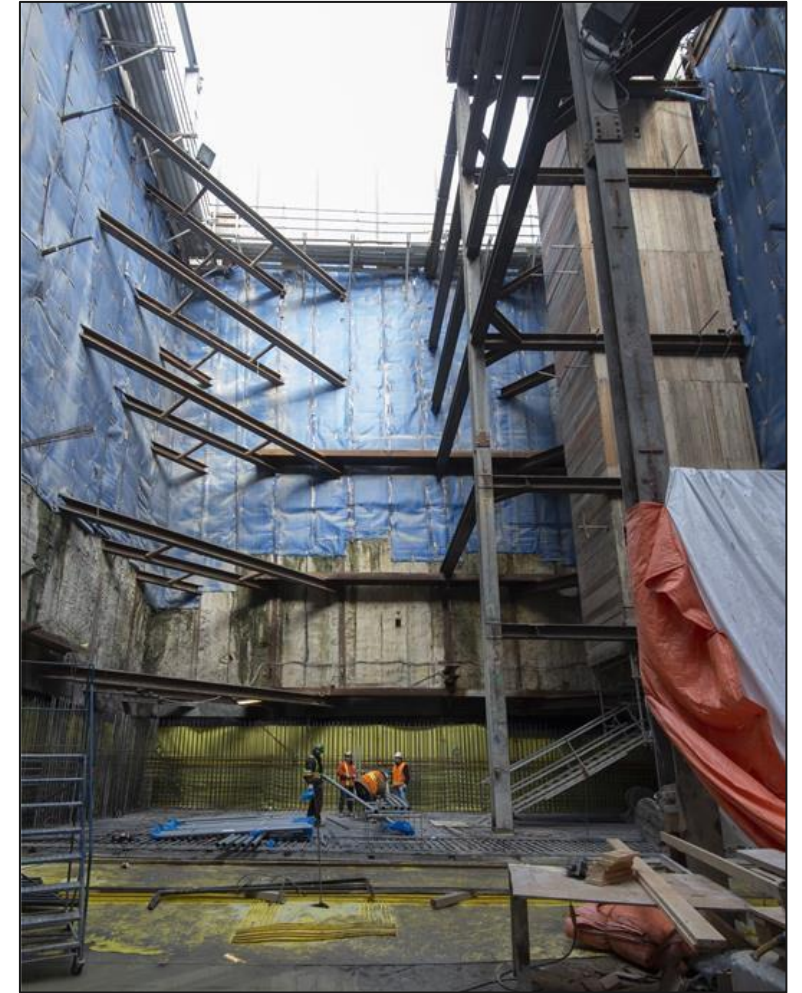
- Progressively remove ground material in controlled layers, first soil and then bedrock.
- Apply shotcrete to exposed surfaces for immediate support.
- Install rock bolts to secure the shaft walls against ground pressure.

Strut and Waler System

- Integrate struts and walers at predefined intervals to stabilize the secant pile walls during deep excavation.

Sequential Excavation

- Excavate in stages, ensuring that each new depth is secured before proceeding further.



Example of shaft excavation, with walers and struts.

WHAT TO EXPECT IN THE COMMUNITY

During excavation work, community members can expect:

- Delivery of equipment and machinery.
- Equipment used during this operation includes drilling machines, mobile cranes, excavators, concrete pumps, and concrete trucks on-site.
- Noise from excavators, loading of excavated material, and deliveries of steel beams and shotcrete is expected.
- Trucks entering and leaving worksites daily, following a specified route.
- Traffic control persons in place to ensure safety for the community and workers on-site.



Example of excavation works in progress

Construction Site Plans for Traffic and Pedestrians

- **All sidewalks and bike lanes will remain open.** Pedestrians will continue to use sidewalks along the work zone.
- **All roads will remain open.** There are no planned road closures in the area. Do expect more traffic on the roads as a result of the increase in trucks coming to and leaving the site.
- **No impacts to public transit.** TTC access at the intersection of King Street East and Parliament Street will remain uninterrupted by the Ontario Line construction activities.
- **Flag-persons** in place to maintain safety. A reminder for members of the public to be mindful and to follow the direction by flag-persons onsite when crossing the access points safely.



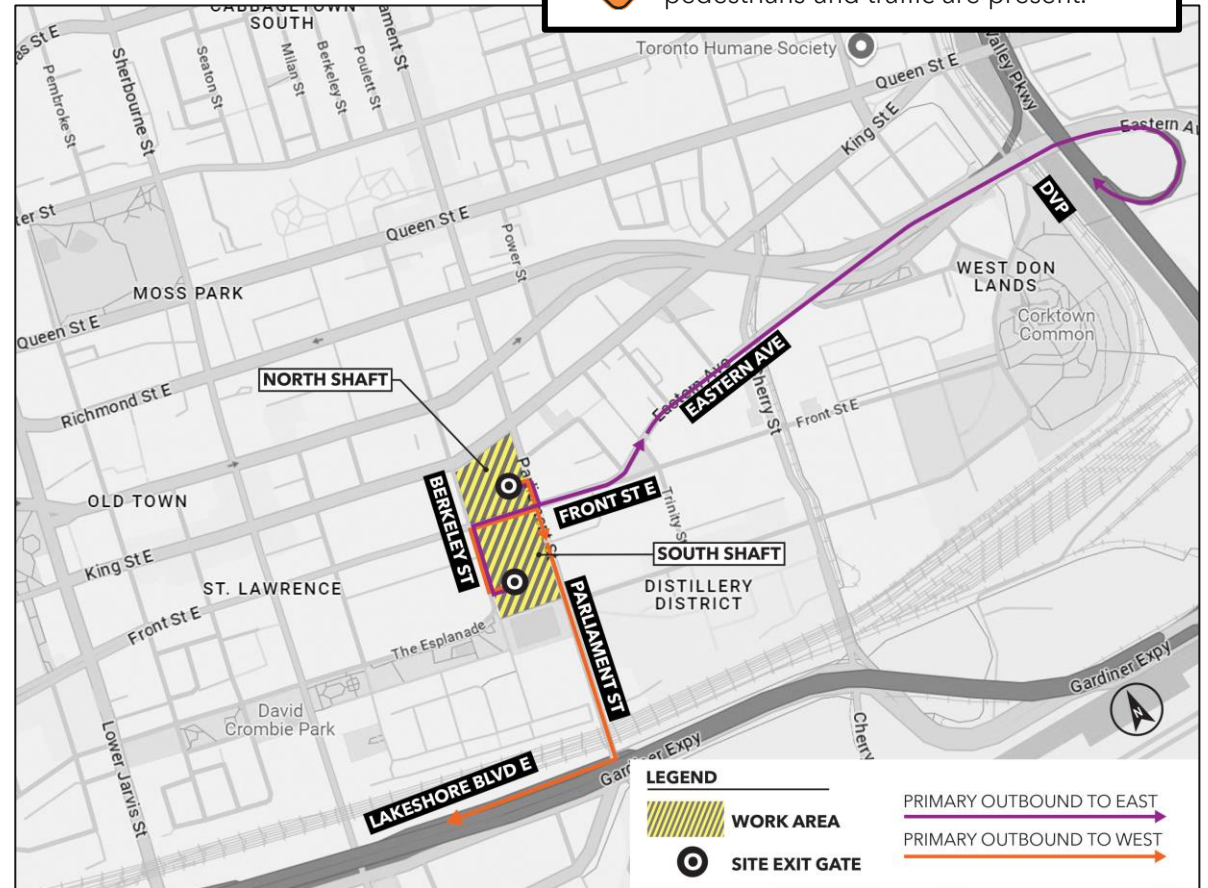
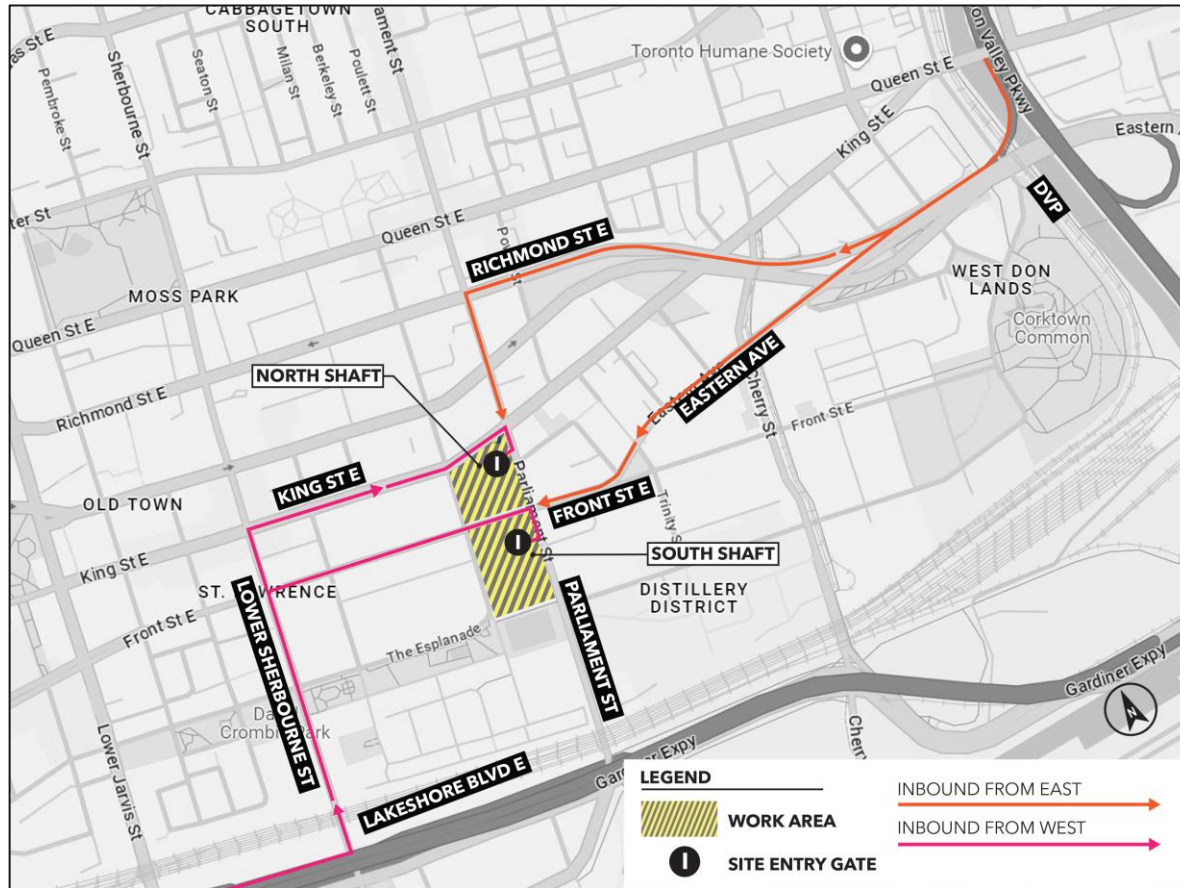
Haul Routes

Corktown Routes are developed in consultation with the City of Toronto.

These maps represent **primary routes** for vehicles entering and exiting the work site, currently in use.



Traffic Control Persons will assist when pedestrians and traffic are present.



Reducing impacts to the community

MINIMIZING IMPACTS TO THE COMMUNITY

To reduce impacts to residents and businesses in the area, mitigations will be in place including:

- **Noise walls** have been specifically designed to help reduce and contain noise.
- Monitoring noise and vibration levels utilizing sound metres and real-time monitoring systems, to track and control noise and vibration emissions to help minimize disturbances to the community and ensure project regulations compliance.
- **Air quality monitoring** to track airborne emissions to ensure that construction activities don't impact the quality of the environment.



5 metre noise wall at King St E and Berkeley St

MINIMIZING IMPACTS TO THE COMMUNITY

Dust suppression will be effectively managed through the use of the following mitigations at site:

- **Water suppression** assists by regularly moistening exposed soils and debris preventing dust particles from becoming airborne.
- **Mud mats** provide a stable and supportive surface for over soft or unstable ground preventing vehicles and heavy equipment from sinking and reducing the amount of mud created with more frequent passage.
- **Street sweepers** and **wheel cleaning** as needed to ensure soil and sediment is kept off city streets and sidewalks.



Street sweeper clearing debris on Parliament Street

Community Artwork: Report Summary

A survey conducted via SurveyMonkey was launched from July 27 to August 23, 2024, to collect community feedback regarding the selection of artwork themes for their respective neighborhoods.

The promotion of the survey took place at CLC meetings, door to door canvassing, community events, digital distribution to the BIAs, Instagram and LinkedIn posts, Breakfast Television, CityNews and CityNews 680.



Common Themes:

- **54.43% History**
 - Historic buildings
 - Indigenous history
- **18.99% Neighbourhood attributes**
 - Nature and wildlife

Next Steps:

- Collaborating with Metrolinx to establish the partners
- Working with partners to develop concept and sketches

Program timelines

Timing	Activity	Details & Purpose
July - August 2024	Capturing Community Feedback	Survey to capture public feedback; survey promoted via on-the-ground marketing and CLC engagement. Survey responses being reviewed in real-time to start to identify potential partners and direction for artwork.
September 2024	Analysis and Reporting	Analysis of results by area and reporting; feedback to be shared with CLC groups in September 2024 to inform what we heard and share direction forward.
October - December 2024	Development and delivery of art	Work with artists / partners to develop and delivery artwork; timelines will vary by site and may change depending on the complexity and medium of artwork selected. Additional information on intended timelines to be shared with communities upon finalization of partners.

***dates subject to change based on unforeseen circumstances*

CONTACT METROLINX AND STAY CONNECTED

Metrolinx will keep the community informed by providing Ontario Line updates and addressing questions and concerns effectively, and quickly.

Connect With Us:

-  Email: OntarioLine@metrolinx.com
-  Telephone 24/7: 416-202-5100
-  Ontario Line e-newsletter: [Metrolinx.com/OntarioLine](https://metrolinx.com/OntarioLine)

Follow us on social media:



Scan the QR code for Metrolinx e-newsletter subscription

