

Hurontario Light Rail Transit Project

Construction Liaison Committee

Mississauga North &
Brampton South

JANUARY 2022



LAND ACKNOWLEDGEMENT

Let us take a moment to acknowledge that we are on the traditional territory of Indigenous Peoples including the Anishnabeg, the Haudenosaunee and the Wendat peoples.

We are all Treaty people. Many of us have come here as settlers and immigrants... in this generation or generations past.

Metrolinx declares its commitment to building meaningful relationships with Indigenous Peoples.

We acknowledge we have a responsibility to recognize and value the rights of Indigenous Peoples and conduct business in a manner that is built on the foundation of trust, respect and collaboration.

We acknowledge the historic and continued impacts of colonialization, the many broken promises and Treaties, and the need to work towards reconciliation with the original caretakers of this land... today and for future generations.

OUR MANDATE

The Construction Liaison Committee is a communications forum to provide open, two-way communication and dissemination of information with stakeholders, elected officials, area residents and businesses related to construction for the Hurontario Light Rail Transit Project including construction activities, short- and long-term impacts, steps being taken to address impacts and community engagement and outreach.

AGENDA: January 2022

Welcome & Introductions

Safety Moment

Action Items

Construction Progress

Construction Update Mississauga North

Construction Update Brampton South

Community Engagement

Round Table Discussion



Safety Moment

EXCAVATION & TRENCHING

Excavations and trenches over 2.4m or 8ft in depth must be protected by a barrier 1.1m (4.2ft) high if proper sloping cannot be achieved

Where excavations / trenches are near public ways, other considerations must be applied:

- Fencing of adjacent sidewalks, including signage warning of the hazards
 - "Danger due to Excavation/Fall Hazard"
- Fencing / signage and protection for off hours around the entire area
- Temporary concrete barriers where workers are exposed to traffic hazards
 - (i.e. high-speed areas or locations with hazards such as curves/bends, poor line of sight)

Access / Egress

- Ladders must be placed and secured within the excavation
- Rescue plans must be established prior to workers entering
 - i.e. davit arm with harness or rescue basket
- Tools / materials should be sent in prior to workers entering to avoid dropped objects and promote 3-point contact if required to enter via ladder



Action Items

FOLLOW UP ITEMS

1. Request for time capsule from schools for community; re: project, life in a pandemic, etc
 - After investigation area being built is future LRT lanes, roadway and sidewalk. Time capsules could not be retrieved.
 - Exploring a partnership with the cities to have time capsules buried at local schools or on municipal land.
2. Request for worker safety video to include in Transit In Your Community Presentations.
 - Mobilinx is building out a safety edition of “where is waldo” as a component of TIYC presentations.

Construction Progress

COMPLETED CONSTRUCTION

Corridor Wide

- ✓ 73 concrete Hydro poles and 22 km of aerial conductor cables installed along the corridor.
- ✓ 7.5 km of watermain, sanitary and stormwater installed throughout the corridor.
- ✓ 90% of temporary traffic signals completed along the entire corridor.
- ✓ Traffic speed limits have been reduced from 80 km/h to 60 km/h along Hurontario Street, between HWY 407 and HWY 401.

Mississauga South

- ✓ Shoring works and excavation of sump pits for the station stop at Port Credit GO Station - Mississauga South*.
- ✓ Concrete for roof slab, east, west, and middle wall poured for Lakeshore West Push Box - Mississauga South.
- ✓ Concrete for deck of West Bridge poured and connected to North Flood Wall at Mary Fix Creek - Mississauga South.



HURONTARIO LIGHT RAIL TRANSIT PROJECT 2021 CONSTRUCTION MILESTONE



73

Concrete hydro poles installed



22,000m

Aerial conductor cable installed



36,000m³

of earth (soil & rock) removed from Port Credit



285,900 tonnes

Total amount of backfilling done at OMSF



27

estimated tonnes of greenhouse gas emissions reduced through virtual training and onboarding



Over 10,000

Inspections conducted throughout the Project, between, safety-quality and environment



Nearly 8,000

task hazard assessments (THA's) and work plans created for site activities



7.5km

of watermain, sanitary and stormwater installed



29

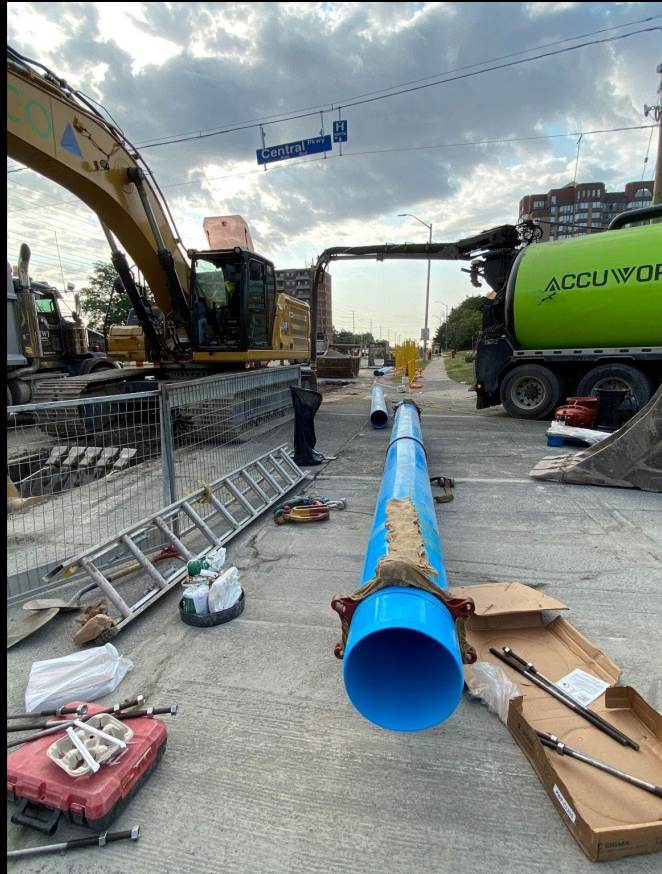
fire hydrants installed



Road widening-Mississauga North



Sanitary Installations - Mississauga South



Water main crossing in Cooksville

ONGOING CONSTRUCTION

Corridor Wide

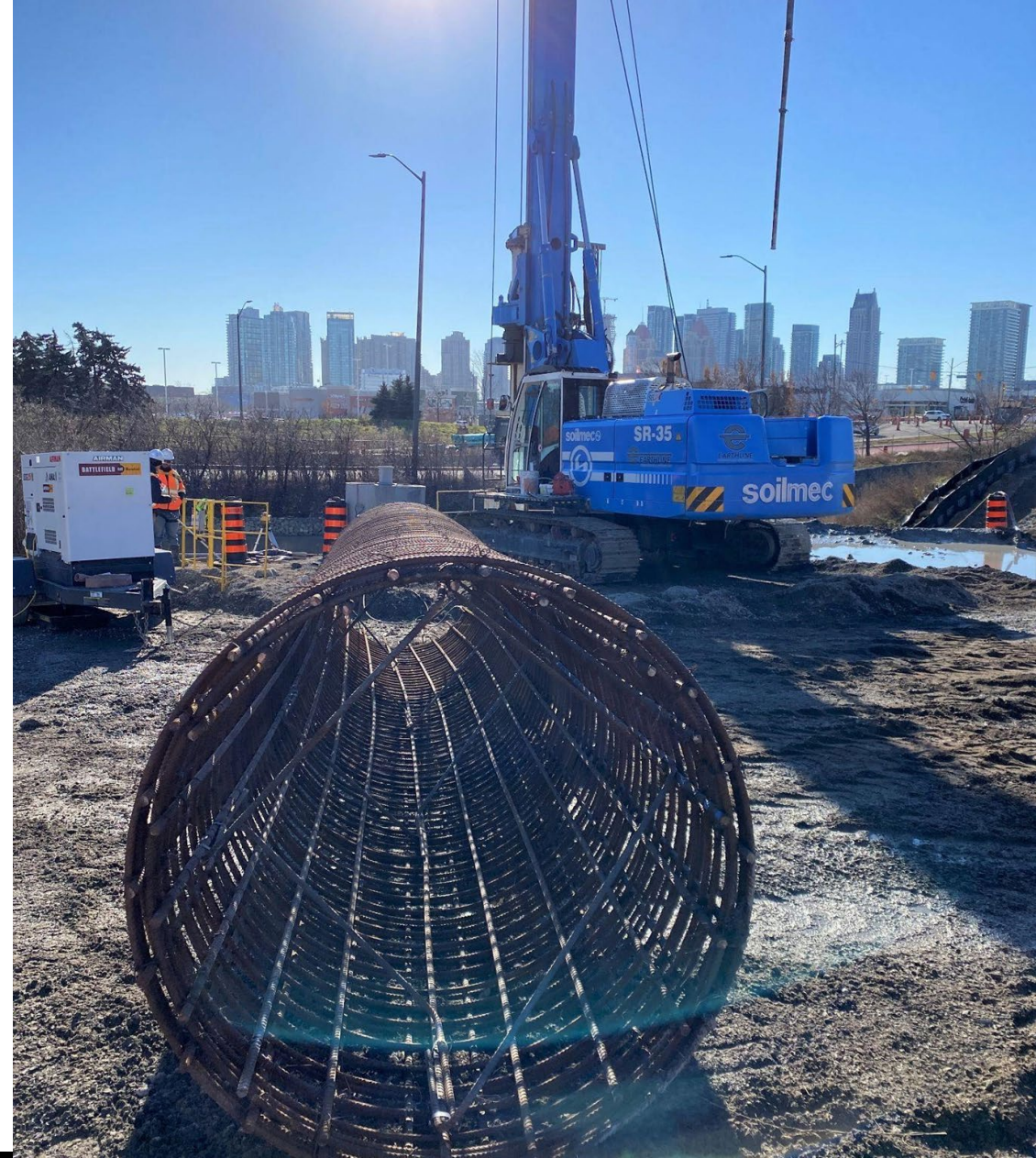
- Installation of sanitary, watermain, storm, and sanitary.

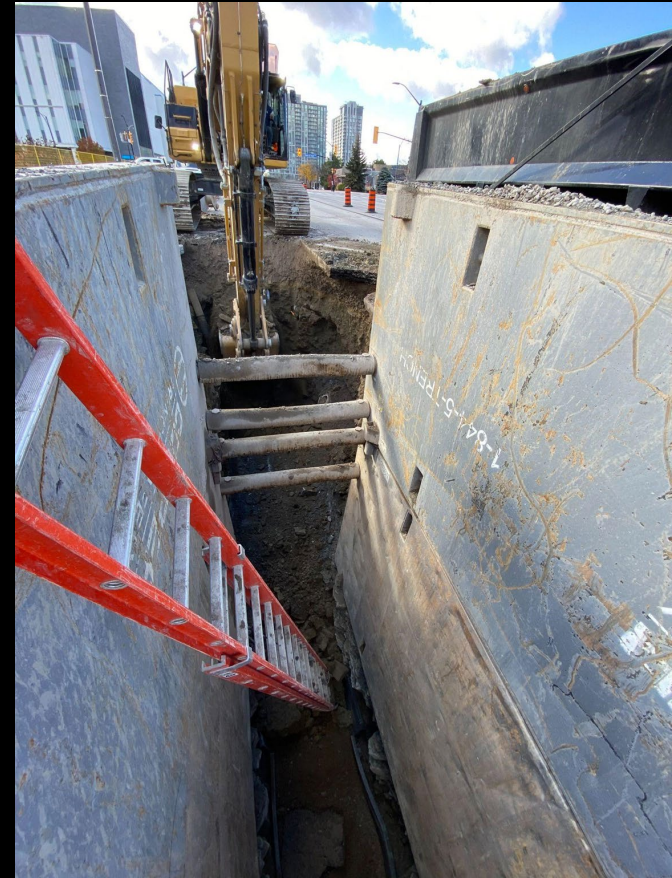
Mississauga South

- Micropiling at the Lakeshore West rail corridor for the Push Box structure.
- Excavation to platform level and early works for the Port Credit Station.
- Pouring concrete for north and south flood walls at Mary Fix Creek.

Mississauga Centre

- Construction of foundations to build elevated guideway on Rathburn Road West.





Sanitary Installations in Mississauga Centre



Lakeshore West Push Box



Port Credit Station - Excavation



Floodwall and Pedestrian Bridge Construction at Mary Fix Creek

UPCOMING CONSTRUCTION

Mississauga South

- Prep works at Port Credit GO Station for service level construction including: waterproofing, rebar and formworks, embedded electrical and mechanical, concrete
- Installation of a temporary bridge (Verona System) that will support the Lakeshore West rail tracks as the tunnel structure is pushed underneath.
- Demolition of the east pedestrian bridge at Mary Fix Creek and the installation of piles to construct the new bridge.

Cooksville

- Storm works to begin between Mathews Gate and Dundas
- Hydro relocations to begin followed by telecommunications infrastructure

Mississauga Centre

- Watermain and storm to start along Hurontario Street at Robert Speck Parkway, moving north.
- Watermain and sanitary along Rathburn Road continue west towards Station Gate Road.
- Excavation, formwork, and concrete pour for elevated guideway piers and abutments



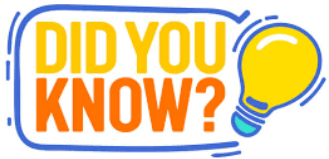
KEEPING THINGS ON TRACK: RAIL FACTS

Key Metrics:

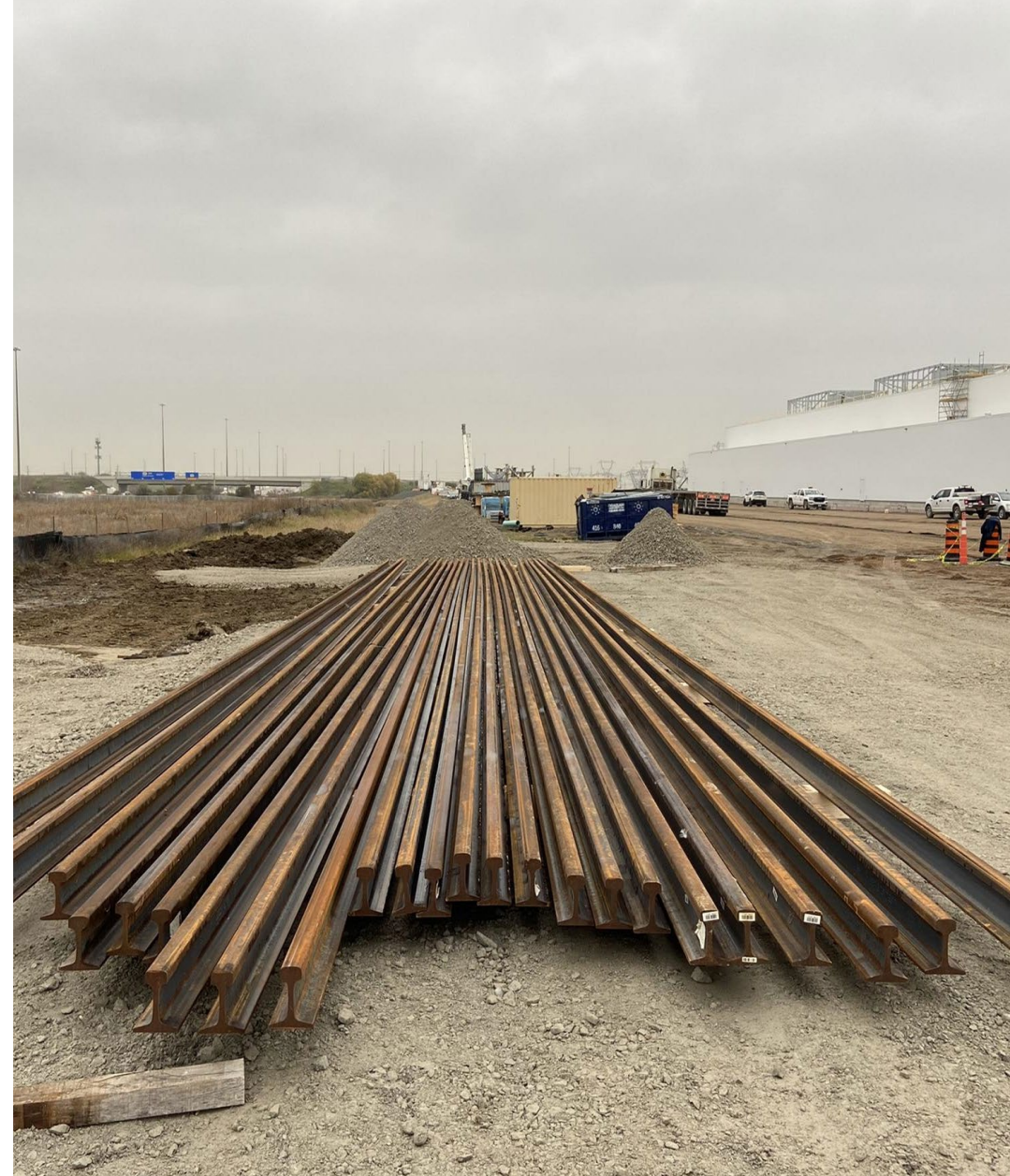
Once complete, the entire project will use:
89 km rail weighing approximately 5000 metric tonnes
55,000 Monoblock and Twin bloc ties
32 km of Rail Encapsulation
13,000 metric tonnes of rail ballast
47,000m³ Guideway Concrete

Deliveries:

120 segments of rail have now been delivered to the OMSF and 360 to the laydown area adjacent to Cooksville GO.
Each segment of rail is 25m in length!



Fun Fact! The first pieces of rail will be installed at the Operations Maintenance and Storage Facility with in the next few months!

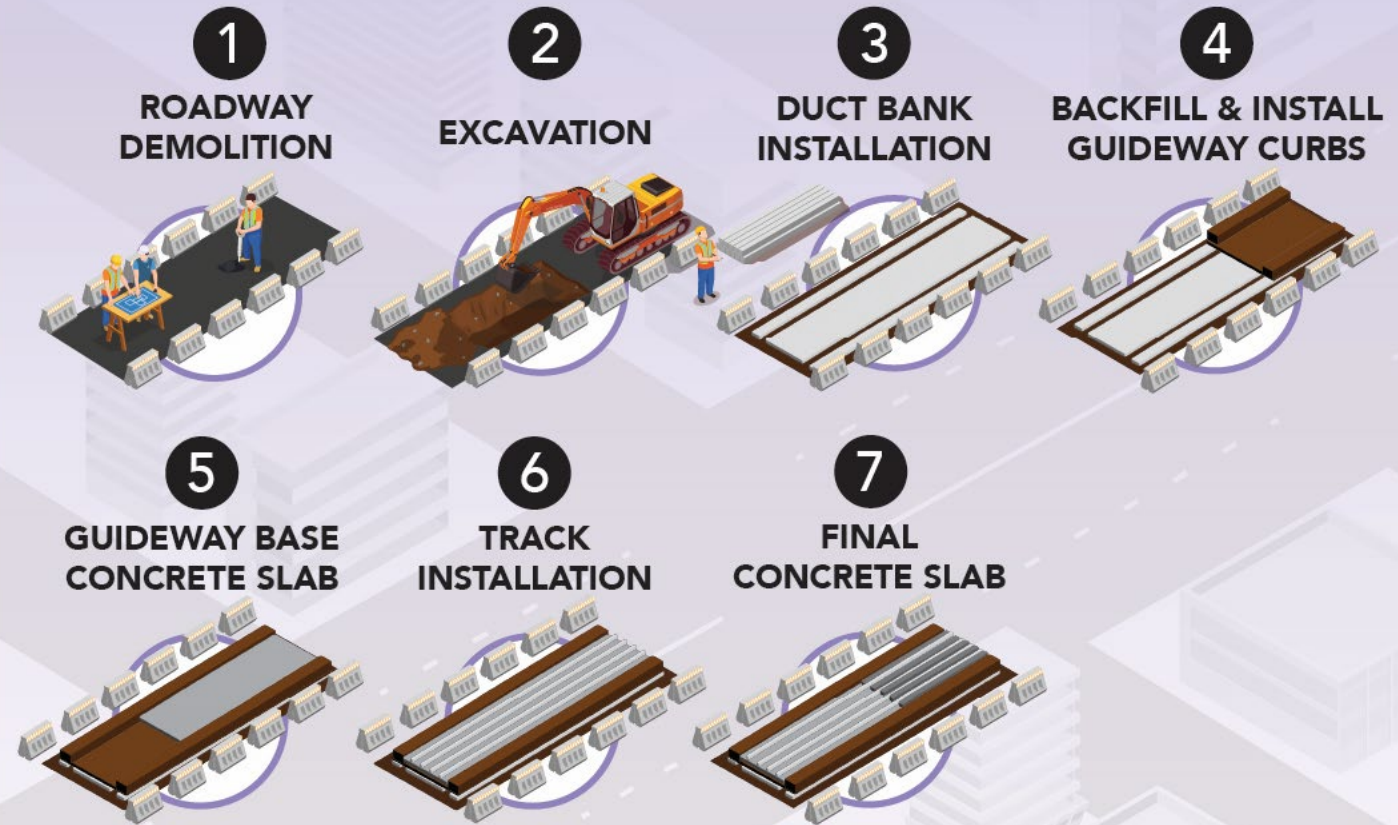


HOW TRACK IS INSTALLED

Installing tracks along the roadway isn't as easy as affixing rails to the ground. Crews first need to dig the roadway up, then dig down as deep as five feet before installing the foundation of the guideway.

Once foundation is installed, the guideway will be backfilled and topped with a concrete slab followed by installation of tracks.

GUIDEWAY CONSTRUCTION



CONSTRUCTION AT NIGHT

Some critical construction tasks can only be safely completed at over night.

Pictured to the right is work to rehabilitate the 401 underpass. You can see crews working under the overpass to ensure that the bridge can support future traffic, along with two lanes of light rail transit.

To complete this work, the underpass is closed between 8pm and reopened to traffic at 6am.

Doing this work at night minimizes the impact to heavier volumes of daytime traffic trying to access highway 401.

This work is completed in phases (northbound, southbound, and centre guideway). Crews are currently working on rehabilitating the northbound section that is expected to be completed in April with the remaining phases expected to be complete by June. These works are planned in coordination with MTO and are weather dependent.



Mississauga North

MISSISSAUGA NORTH WORK ZONES

Work Zone 10 - Eglinton Avenue to
Matheson Boulevard

Work Zone 11 - Matheson Boulevard to
Britannia Road

Work Zone 12 - Britannia Road to Madill
Boulevard

Work Zone 13 - Madill Boulevard to Derry Road

Work Zone 14 - Derry Road to Highway 407 South
Ramp



Mississauga North Construction

Completed

Work Zone Ten to Fourteen

- Investigation works. (Derry Rd. Gas Tank, fire hydrant and utilities)
- Trenching for light poles and permanent streetlights.
- Removals of old hydrants and concrete curbs.
- Storm line relocations. (Kingsway to Edwards)

Ongoing

Work Zone Ten

- Catch basin, fire hydrant relocations and watermain relocation work.

Work Zone Eleven

- Permanent Street light installation
- Installation of underground duct banks and manholes

Work Zone Thirteen to Fourteen

- Storm line, sewer and Alectra relocation work.
- Removals - concrete curbs, stripping topsoil and installing fencing

Upcoming

Work Zone Eleven

- Road widening and curb installation (Matheson to Sandstone)

Work Zone Twelve

- Temporary widening of the 401 bridge.

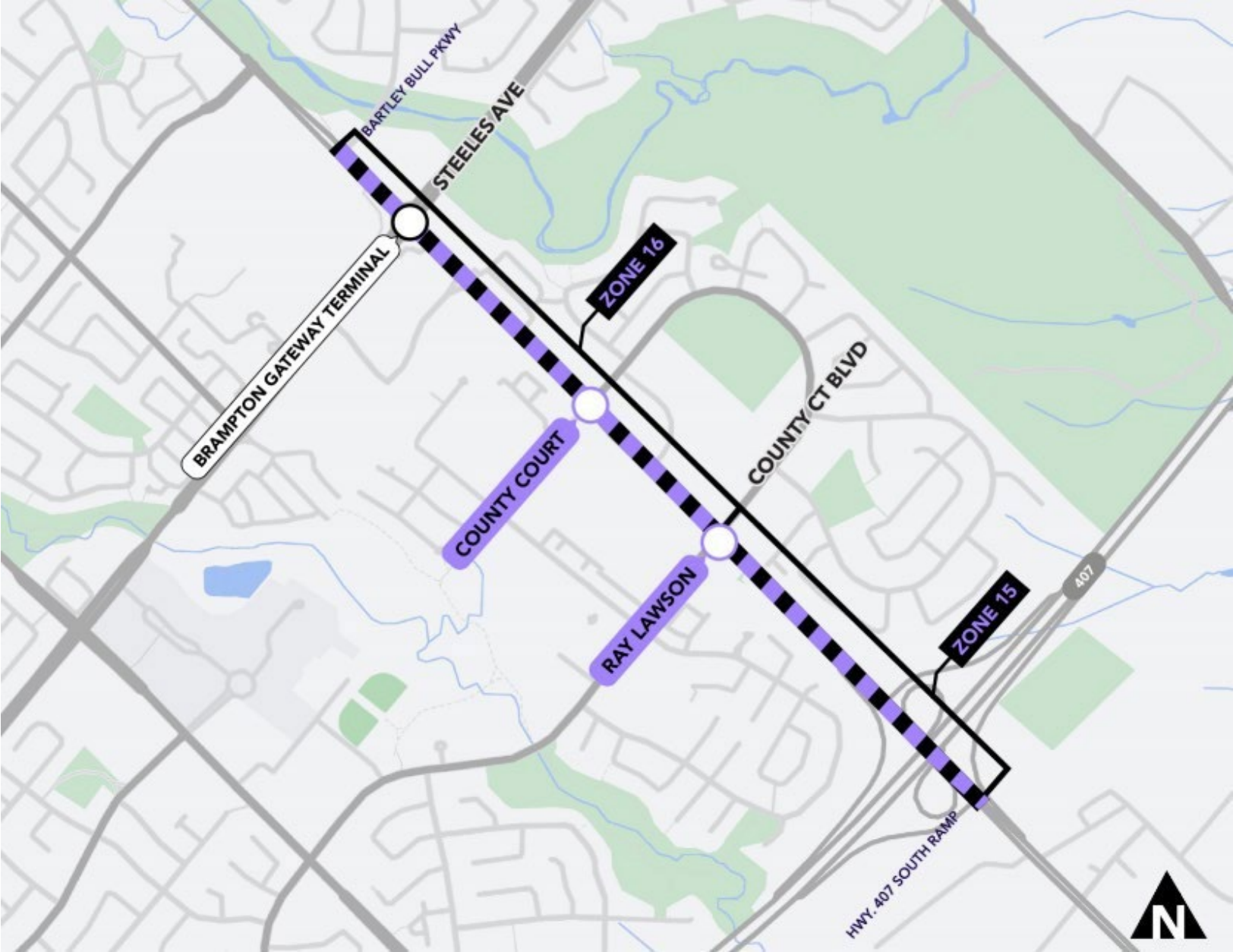


Brampton South

BRAMPTON SOUTH WORK ZONES

Work Zone 15 - Highway 407 (South Ramp) to County Court Boulevard

Work Zone 16 - County Court Boulevard to Bartley Bull Parkway



Brampton South Construction

Completed

Work Zone Sixteen

- Installation of temporary traffic signals
- Stage 1 removals of medians at intersections

Ongoing

- Preparation for sanitary works

Upcoming (three-month window)

Work Zone Fifteen and Sixteen

- Tree protections and removals
- Storm sewer and watermain work



Operations Maintenance and Storage Facility

OMSF Yard - Completed

- Track subbase preparation
- Etobicoke creek foundation and wingwall works

OMSF Yard - Upcoming activities:

- Systems duct bank and chamber installation
- Etobicoke creek barrier wall forms and pour (on retaining walls)

OMSF building - Ongoing activities

- Fireproofing
- Stair installation
- Maintenance pit foundation walls
- Wash bay facility foundation installation

OMSF - Upcoming

- Concrete slab on grade works at OMSF building
- Start of wet utilities works on Kennedy Road





Construction Activities at the OMSF Facility on Kennedy Road, Brampton

Communications Engagement

COMMUNITY CANVASS

The Fall 2021 canvass focused on reaching out to local businesses and transit riders at our temporary bus platforms. The purpose of this canvass is to find out how we can support businesses and commuters through construction.

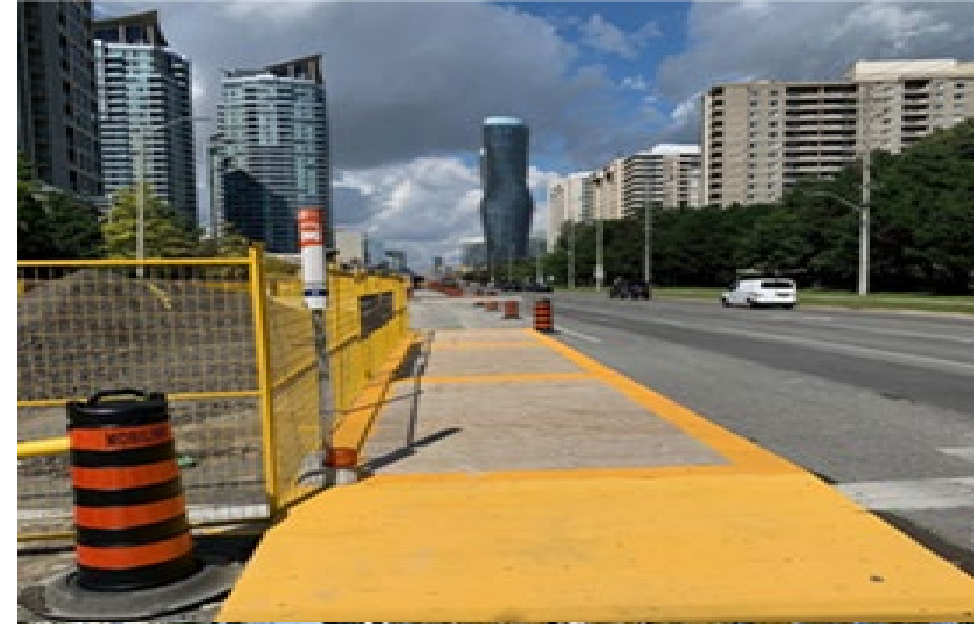
Fall Canvass by the numbers

Transit User Survey

- 89% of the respondents said they are satisfied with the safety and accessibility of temporary bus platforms
- 47% of respondents said they use their bus stop every day

Businesses

- 61% of the respondents said they use e-commerce platforms to sell their products
- 18% of the respondents said they would be interested in attending free online workshops on business development



COMMUNITY SUPPORT: ANGEL TREE

Metrolinx and Mobilinx engaged in collecting donations for the Holiday Wishes Program in support of the Peel Children's Aid Society (deadline December 8th, 2021, with additional drop-offs directly to PCAS offices).

The Peel Children's Aid Society is an agency that works with the community in supporting families facing difficult challenges. The Peel Children's Aid Foundation (PCAF) was created to raise funds for essential programs not funded by the government.

The PCAF's Holiday Wishes Program brings holiday joy to vulnerable children, youth and families. Participants were encouraged to purchase essential items for families in need such as toys, grocery gift cards, baby supplies and toiletries:

- This year an additional 120 families will be supported by the donations, contributing to approximately 1200 families in total
- The foundation requires donations year-round to help support families, kids in care, youth in care and youth aging out of the system.



COMMUNITY ENGAGEMENT UPDATE

Questions?

Ask us at metrolinxengage.com

Or contact us by phone, email, or on social media

For More Information

Stay up to date with Metrolinx projects in your region!
Metrolinx.com/peel

Hurontario LRT Community Offices

Phone: 416-202-7500

Email: peel@metrolinx.com

3024 Hurontario Street unit G12
Mississauga, ON. L5B 4M4

17 Ray Lawson Blvd unit 9
Brampton, ON. L6Y 5L7



@HurontarioLRT

Sign Up

for Peel Region updates and more from Metrolinx

Email*

Subscribe

Subscribe for the latest news from Metrolinx. You can unsubscribe at any time. Your personal information is being collected under the authority of the Metrolinx Act, 2006 in order to provide you with email communications about Metrolinx services.

For questions, contact: Manager, Customer Contact, Metrolinx, 20 Bay St, Toronto, ON, M5J 2W3, (416) 869-3600.

Round Table Discussion



APPENDIX A: GLOSSARY OF CONSTRUCTION TERMS

Term	Definition
Culvert	Culverts are small channels that allow water to run under a road or railroad structure.
Wet Utilities	Examples of wet utilities are sanitary, storm water (rainwater), water main (potable water, fire hydrants)
Dry Utilities	Examples of dry utilities are power, underground conduits, fiber optics (telecommunications).
Guideway	The guideway is the structure the LRVs will operate at the HWY 403 crossing. This includes steel tracks, the concrete pads for tracks, and OCS poles. The elevated guideway is a structure with tracks raised above the street level, and civil works for the guideway includes anything below the grade of the guideway (duct banks for electrical cables, drainage etc.)
Roads, Curbs, Sidewalks	This involves preliminary works including drainage, catch basins, temporary paving, new curbs, sidewalks, and boulevards etc. Final paving and reinstatement occur as a part of the final landscaping and design package.
Push Box	An innovative method which uses hydraulic jacks & spreaders to move a cast-in-place concrete box carrying the entire underpass in a short period of time. It causes minimal disruption to surrounding traffic.
RSS/Retaining Wall	Retained Soil Systems Wall. The purpose of this wall is to retain soil in order to protect a change in grade.
Track works	Track works are at grade.

APPENDIX A: GLOSSARY OF CONSTRUCTION TERMS

Term	Definition
Hydro Duct Bank	A grouping of hydro cables buried underground or encased in concrete.
Flood Wall	A wall built to prevent inundation by high water.
Staging	Staging indicates the set-up of fenced off work area and installation of temporary bus platforms as required on the corridor.
Pole	A structure used to support overhead lines.
OMSF	OMSF stands for Operations, Maintenance and Safety Facility of the Hurontario LRT. It is located just south of Hwy.407 at the border of Brampton and Mississauga.
Girder	A girder is a horizontal support beam used to strengthen bridges and other structures.
TPSS	TPSS stands for Traction Power Substation. They ensure a consistent level of power to the Light Rail Vehicles.
French Drainage System	The French Drainage System consists of a trench filled with gravel or rock or pipe to divert water away from an area. It is used to prevent water damage to building foundations. This will be installed at the OMSF site.

APPENDIX A: GLOSSARY OF CONSTRUCTION TERMS

Term	Definition
Switchgear	Switchgear systems ensure reliable power distribution, power energy control, protection and monitoring for the Finch West line.
Sump Pit	Excavated area that collects ground water and debris to be filtered away from the foundation of a building or structure