

Hurontario Light Rail Transit Project

# Construction Liaison Committee

Mississauga South

March 2022



# LAND ACKNOWLEDGEMENT

Let us take a moment to acknowledge that we are on the traditional territory of Indigenous Peoples including the Anishnabeg, the Haudenosaunee and the Wendat peoples.

We are all Treaty people. Many of us have come here as settlers and immigrants... in this generation or generations past.

Metrolinx declares its commitment to building meaningful relationships with Indigenous Peoples.

We acknowledge we have a responsibility to recognize and value the rights of Indigenous Peoples and conduct business in a manner that is built on the foundation of trust, respect and collaboration.

We acknowledge the historic and continued impacts of colonialization, the many broken promises and Treaties, and the need to work towards reconciliation with the original caretakers of this land... today and for future generations.

# OUR MANDATE

The Construction Liaison Committee is a communications forum to provide open, two-way communication and dissemination of information with stakeholders, elected officials, area residents and businesses related to construction for the Hurontario Light Rail Transit Project including construction activities, short- and long-term impacts, steps being taken to address impacts and community engagement and outreach.

# AGENDA: MARCH 2022

Welcome & Introductions

Safety Moment

Action Items

Construction Progress

Mississauga South Update

Community Engagement

Round Table Discussion



**Safety Moment**

# EVERYONE HOME SAFE, EVERY DAY

Safety is at the core of everything we do and while we can't legislate for unsafe behaviors, we can commit to building awareness in order to help mitigate it.

To increase awareness around worksite safety, we would like to remind everyone of our commitment to worker and pedestrian safety. After receiving multiple complaints of unsafe traffic movements, the project took immediate action to install additional high visibility signage along Hurontario Street and increased safety messaging across social media.

We ask that the community, motorists, pedestrians and cyclists:

- Practice patience and plan-ahead to avoid delays.
- Adhere to posted speed limits and other signage on the road.
- Avoid distractions while driving.
- Treat construction zones as if they were your own workplace.

Our goal remains that everyone gets home safe, every day.



# Action Items

# FOLLOW UP ITEMS

Concerns regarding Floradale to King Street lane reductions and investigating the left turn at Paisley.

- Lines demarcating traffic lanes have been refreshed from HWY 407 to Port Credit GO and motorists are able to make a left turn at the Paisley intersection.
- Temporary closure for Paisley East, to accommodate watermain installations, are expected to take place for approximately five days.
  - Access to Paisley East will be available by detouring King Street and Shepard Avenue.
  - A construction notice has been distributed with relevant detour information.
  - Work may be rescheduled due to weather or other unforeseen circumstances.

## Temporary Road Closure of Paisley Boulevard East at Hurontario Street

Beginning March 21, 2022 at 7am to March 25, 2022 at 7 pm



Information as of: March 2022

 METROLINX



# Construction Progress

# CONSTRUCTION PROGRESS: UTILITIES



## Wet Utilities Completed to Date

- ✓ Watermain - 6.1 Km of pipe installed to date
- ✓ Storm - 3.3 Km of pipe installed to date
- ✓ Sanitary - 1.7 Km of pipe installed to date
- ✓ **Total of all wet utilities is 11.5 Kms**

## Dry Utilities Completed to Date

- ✓ 88 Hydro poles installed
- ✓ 5.06 Km of concrete encased underground hydro duct banks installed
- ✓ 6.12 Km of underground hydro cable installed
- ✓ 30.81 Km of aerial conductor installed



Utility Relocations in Cooksville



Temporary Traffic Signal Adjustments in Mississauga North

# CONSTRUCTION UPCOMING

## Cooksville

- Watermain installations continue between Paisley Boulevard East and Dundas Street as well as between Fairview Road and Matthews Gate.
- Temporary road closures are expected for watermain and storm system installations as works cross intersections along Hurontario Street.
- Overnight works for watermain installations are expected from mid-March to mid-April, between The Queensway to Dundas Street.

## Mississauga Centre

- Watermain installation have begun along Hurontario Street between Burnhamthorpe Road and Square One Drive.
- Watermain, storm, and sanitary installations continues east along Rathburn Road from Station Gate towards the Hurontario Street ramp.
- Excavation, formwork, and concrete pour for elevated guideway piers and abutments continues (Piers 3-5, and 13).

## Mississauga North

- Storm and watermain installations continue between Eglinton Avenue and Matheson Boulevard as well as between Derry Road and Topflight Drive.
- Alectra relocations, road widening, and new curb installations continue between Matheson Road and HWY 401 as well as along Britannia Road, including the installation of transformers and switchgear.
- Traffic staging and civil works for guideway construction is expected to take place between mid-March to June.
- Road widening between Matheson to HWY 407 continues with excavation and the installation of subdrains.
- Installation of permanent street light installations continue between Matheson Road and Britannia Road as well as between Derry Road to HWY 407.

## Brampton South

- Tree protection work is underway.
- Staging on both sides of Hurontario Street between Bartley Bull Parkway and Brampton City Limits are expected to begin by the end of March.
- Wet utilities set to begin once traffic staging is complete (watermain, sanitary and storm).
- Installation of guideway, tracks, and OCS poles at the OMSF are ongoing, and connecting guideway infrastructure onto Edwards Boulevard.
- Electrical connections and the overhead steel platforms are being installed at the OMSF building.





Caisson Drilling for OCS Poles at the OMSF Facility in Brampton

# TRACK INSTALLATION

Guideway construction in preparation for track installation along Hurontario Street will progress from south to north, beginning between Matheson Boulevard and Britannia Road.

Construction will occur in the mid-block sections (the areas between intersections) with minimal/no impact to pedestrians and traffic flows at intersections for this stage of work. Work will occur in all of the mid-block zones simultaneously and will take approximately four months to complete in this area.

Once the guideway is constructed, the configuration in the centre of the roadway will be permanent, prohibiting U-turns and left-turns across the tracks at undesignated locations.

Traffic staging and initial works are expected to begin by the middle of March 2022.

## RAPID TRANSIT IS ON ITS WAY!

Drivers will be required to follow a "right in, right out" approach. Left turns and through-traffic will be restricted at unsignalized cross-streets and driveways, allowing for a faster, safer commute.



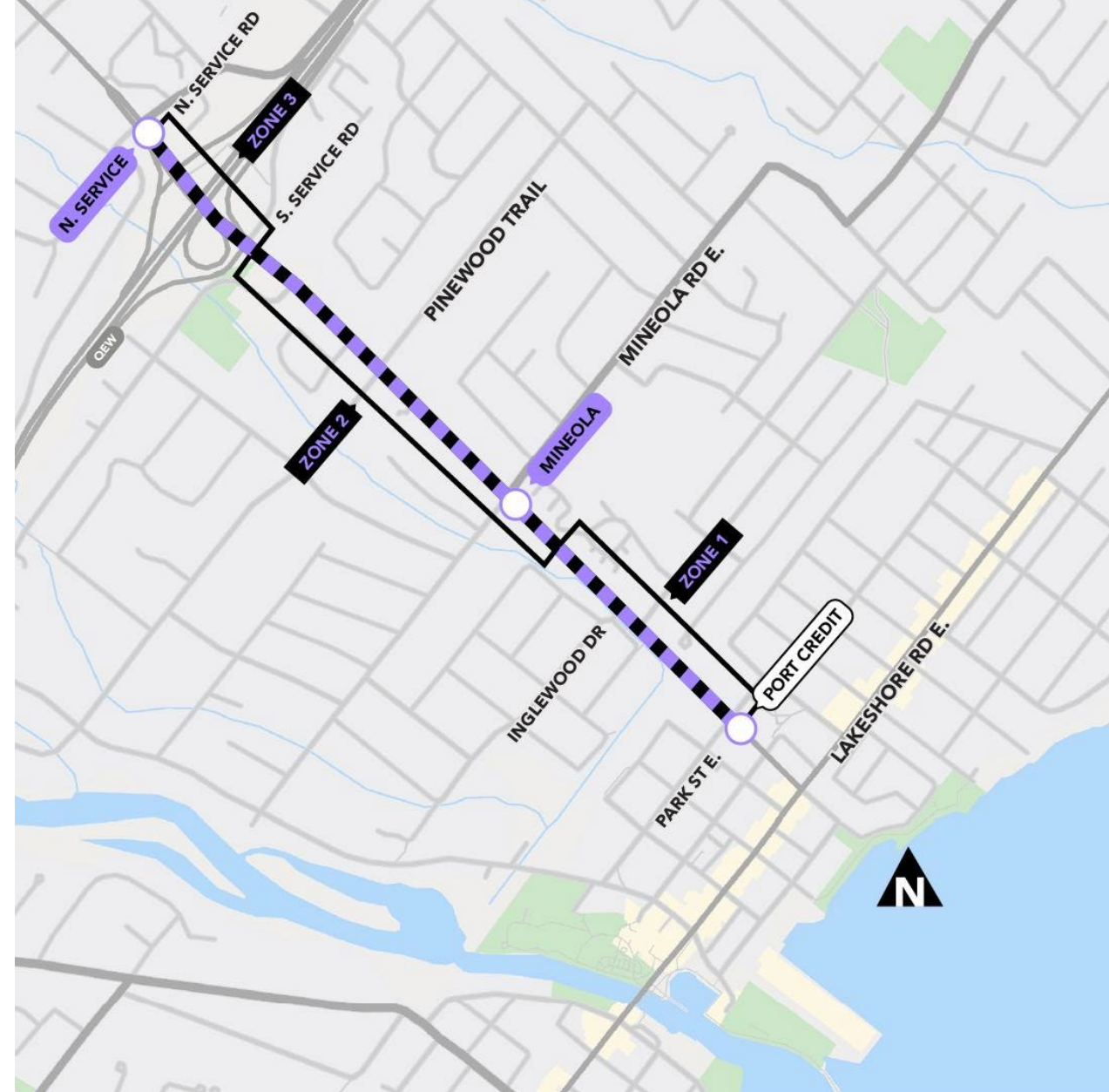
# Mississauga South Update

# MISSISSAUGA SOUTH WORK ZONES

Work Zone 1 – Park Street to north of Inglewood Drive

Work Zone 2 – Inglewood Drive to QEW South ramp

Work Zone 3 – QEW South ramp to QEW North ramp (Harborn Road)





# CONSTRUCTION PROGRESS - ALIGNMENT

## Ongoing/Upcoming

### *Work Zone One* (Park Street to north of Inglewood Drive)

- Alectra relocations, aerial cables, and hydro pole installations continue
- Watermain work will follow Alectra relocations
- Retaining wall construction from Park Street to Eaglewood Boulevard (east side of Hurontario)

### *Work Zone Two and Three* (South of Mineola to QEW MTO ROW)

- Sanitary and watermain installations continue north of Mineola Road
- Alectra relocations and duct bank works continue along the boulevard



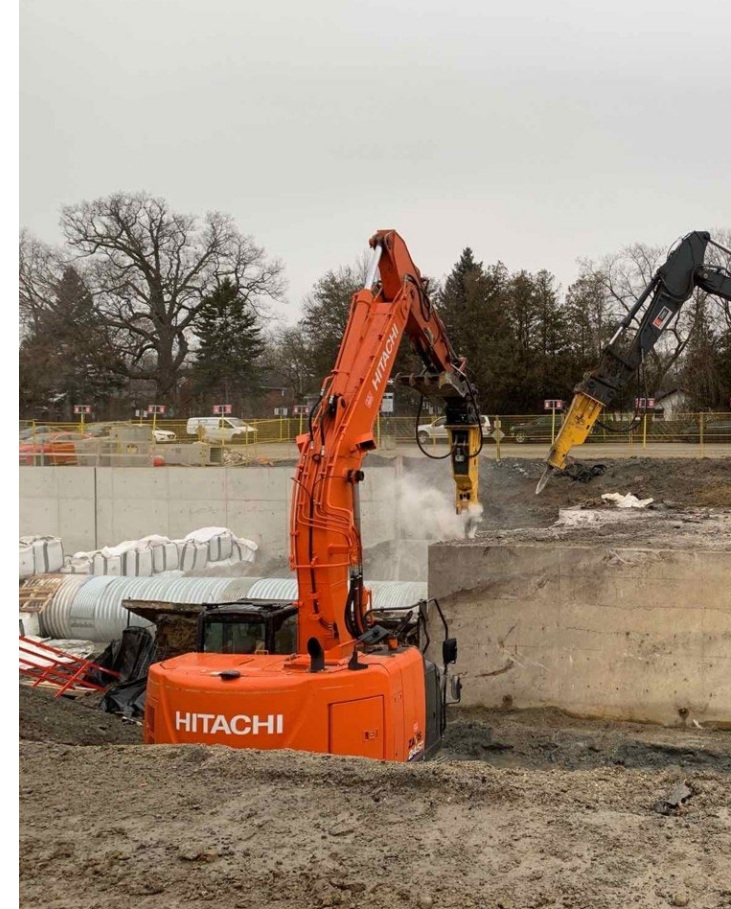
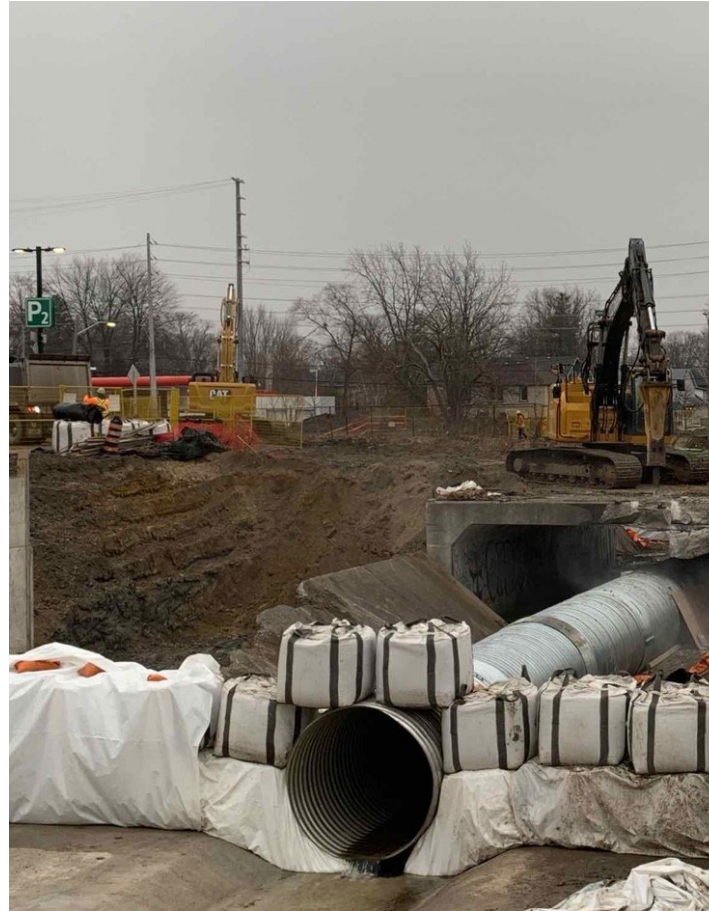
# CONSTRUCTION PROGRESS - PORT CREDIT STATION, LSW PUSH BOX, MARY FIX CREEK

## Ongoing

- With excavation completed, concrete pours for service level slabs continue at Port Credit Station.
- With micro-piling activities related to the Push Box completed, preparatory works for the installation of a temporary bridge on the Lakeshore West tracks continues with the installation of pier caps within the railway corridor. Some nighttime works are expected.
- With the east bridge at Mary Fix Creek recently complete, excavation continues east for floodwall construction.

## Upcoming

- Temporary bridge on the railway corridor (Verona System) and underpass structure (Push Box) to be pushed into place with some nighttime works expected
- Installation of piles to form the footings for the new east bridge at Mary Fix Creek.
- Service level construction at Port Credit Station





Lakeshore West Push Box



Port Credit Station - Excavation

# BRINGING THE LRT TO PORT CREDIT GO

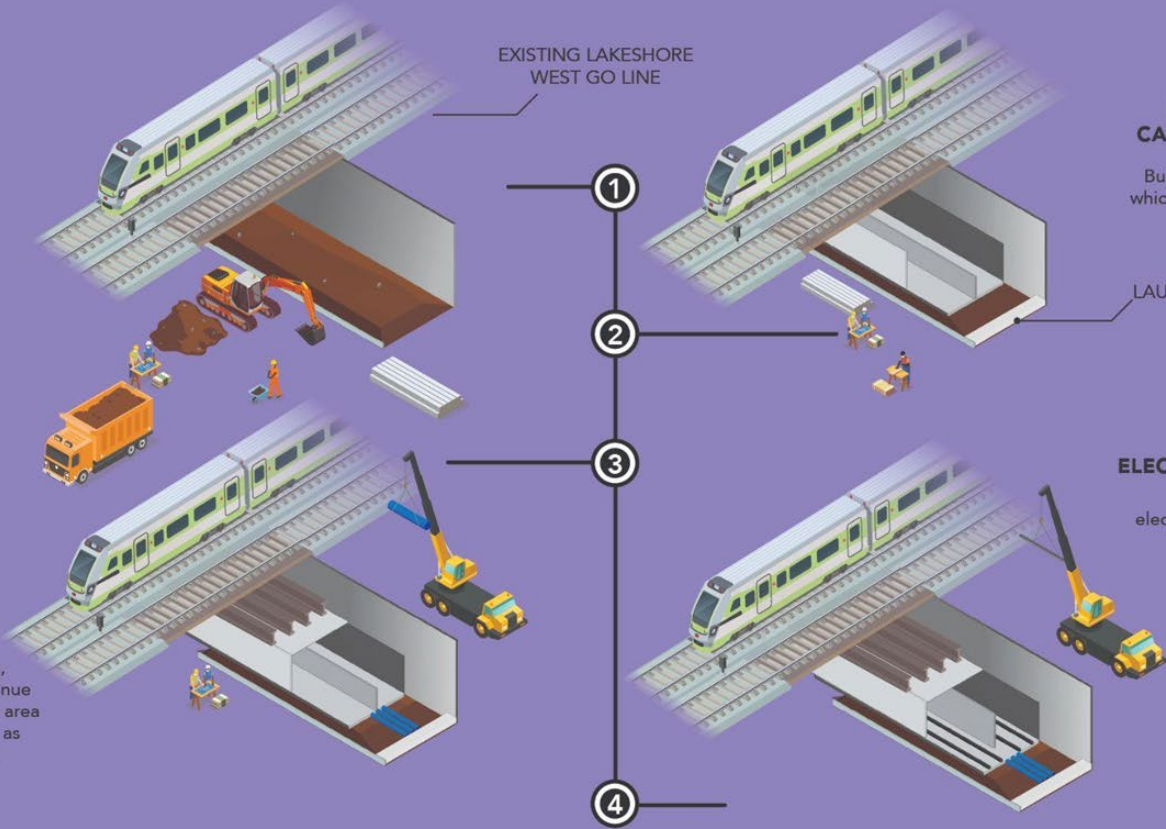
Work for the push box at Port Credit Station is ongoing. The push box is a large, hollow concrete box that will be pushed underneath the Lakeshore West GO line at the Port Credit GO Station. This will create a tunnel under the rail tracks, allowing the future HuLRT line to move without disrupting rail service on the tracks above. Here are the steps involved in the process:

## SHORING WALLS & EXCAVATION

Excavate area and build the supports for the push box.

## TEMPORARY BRIDGE SUPPORTS AND BOX JACKING

Install temporary bridge supports, which allows train service to continue overhead. The area below continues to be excavated as the push box is moved into place using hydraulic rods.



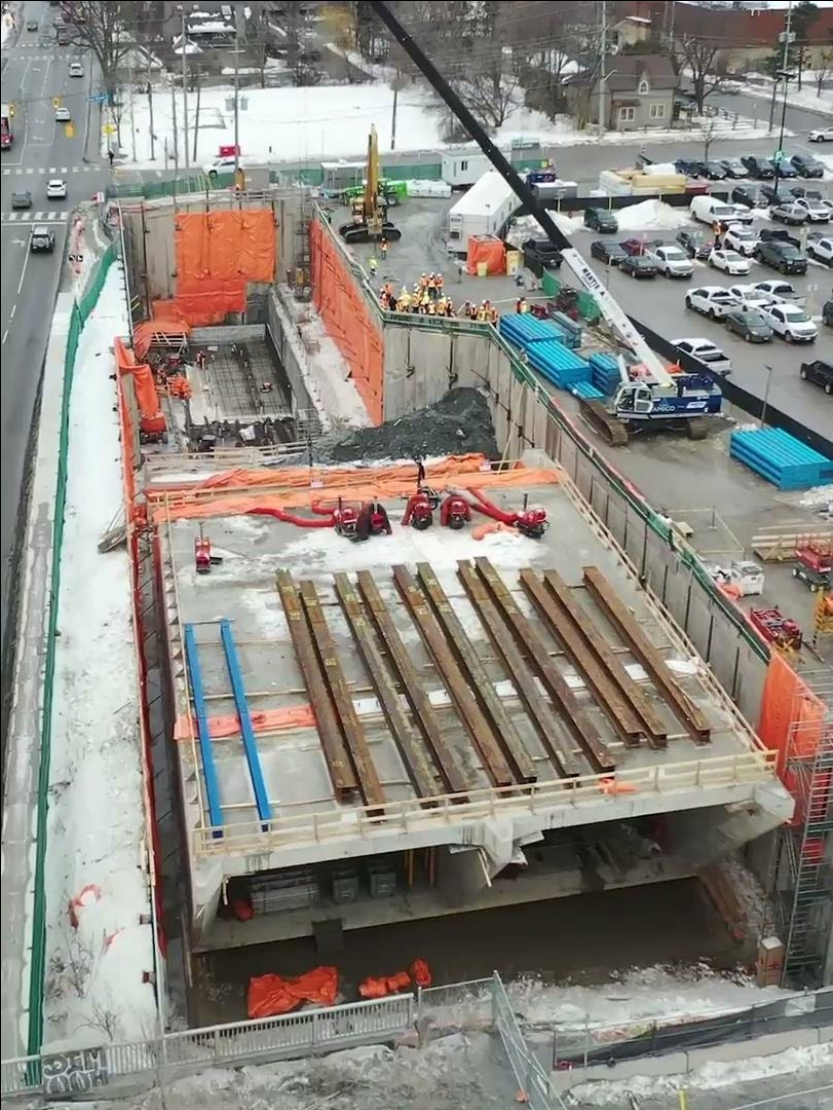
## THRUST BLOCK, LAUNCH SLAB, & CAST-IN-PLACE BOX

Build concrete slab upon which the push box will be built and pushed.

LAUNCH SLAB

## TRACKS AND ELECTRICAL SYSTEMS

Install the tracks and electrical systems that will power the line.





Mary Fix Creek - Channel Excavation



Mary Fix Creek - Channel Excavation

# Community Engagement

# WHAT HAVE WE BEEN UP TO?

*Community Engagement staff are out in the public speaking to residents and businesses where and when it makes sense while following all COVID 19 guidelines to keep ourselves and members of the community safe.*

## What have we been up to?

- Virtual and on-site meetings across Mississauga and Brampton
  - Tree impacts and grading impacts
  - Driveway impacts from wet and dry utility relocation
- Gradual reopening of community offices

## The HuLRT is getting a name!

- Peel Region's newest rapid transit line, the Hurontario light rail transit route is getting a name, honouring one of Canada's longest serving mayors
- The project will continue to be referred to as the Hurontario LRT while construction is underway but will adopt the name once the line opens.
- Learn more about it on our blog: <https://blog.metrolinx.com/2022/02/14/hurontario-lrt-to-be-named-after-long-time-mississauga-mayor-hazel-mccallion/>
- Listen to a Metrolinx podcast with Hazel McCallion on having an LRT named in her honour: <https://blog.metrolinx.com/2022/02/17/between-the-lines-podcast-the-naming-of-the-hazel-mccallion-lrt/>



# WHAT IS AHEAD?

- We are approaching the “writ period” which is a period that falls immediately before election day.
- During this time, CLC communications (e-update and virtual meeting) will not be held until after the election. Large scale public engagement, including virtual opening houses and public information sessions will not be held during this time.
- Construction, operations and communication with the community via notices, email, calls and 1:1 meetings will continue throughout, as work progresses on the project.
- Community Engagement is still here for you to answer your questions as major construction continues along Hurontario Street.
- We’re always available via phone or email, and we’re available in person at one of our two offices by appointment.



# GET IN TOUCH WITH US!

## Questions?

Ask us at [metrolinxengage.com](https://metrolinxengage.com)

Or contact us by phone, email, or on social media.

Stay up to date with Metrolinx projects in your region!  
[Metrolinx.com/peel](https://metrolinx.com/peel)



## Hurontario LRT Community Offices

Phone: 416-202-7500

Email: [peel@metrolinx.com](mailto:peel@metrolinx.com)

3024 Hurontario Street unit G12  
Mississauga, ON. L5B 4M4

17 Ray Lawson Blvd unit 9  
Brampton, ON. L6Y 5L7



@HurontarioLRT

### Sign Up

for Peel Region updates and more from Metrolinx

Email\*

### Subscribe

Subscribe for the latest news from Metrolinx. You can unsubscribe at any time. Your personal information is being collected under the authority of the Metrolinx Act, 2006 in order to provide you with email communications about Metrolinx services.

For questions, contact: Manager, Customer Contact, Metrolinx, 20 Bay St, Toronto, ON, M5J 2W3, (416) 869-3600.

# Round Table Discussion



# APPENDIX A: GLOSSARY OF CONSTRUCTION TERMS

Term	Definition
<b>Culvert</b>	Culverts are small channels that allow water to run under a road or railroad structure.
<b>Wet Utilities</b>	Examples of wet utilities are sanitary, storm water (rainwater), water main (potable water, fire hydrants)
<b>Dry Utilities</b>	Examples of dry utilities are power, underground conduits, fiber optics (telecommunications).
<b>Guideway</b>	The guideway is the structure the LRVs will operate at the HWY 403 crossing. This includes steel tracks, the concrete pads for tracks, and OCS poles. The elevated guideway is a structure with tracks raised above the street level, and civil works for the guideway includes anything below the grade of the guideway (duct banks for electrical cables, drainage etc.)
<b>Roads, Curbs, Sidewalks</b>	This involves preliminary works including drainage, catch basins, temporary paving, new curbs, sidewalks, and boulevards etc. Final paving and reinstatement occur as a part of the final landscaping and design package.
<b>Push Box</b>	An innovative method which uses hydraulic jacks & spreaders to move a cast-in-place concrete box carrying the entire underpass in a short period of time. It causes minimal disruption to surrounding traffic.
<b>RSS/Retaining Wall</b>	Retained Soil Systems Wall. The purpose of this wall is to retain soil in order to protect a change in grade.
<b>Track works</b>	Track works are at grade.

# APPENDIX A: GLOSSARY OF CONSTRUCTION TERMS

Term	Definition
Hydro Duct Bank	A grouping of hydro cables buried underground or encased in concrete.
Flood Wall	A wall built to prevent inundation by high water.
Caisson Wall	Caisson (or secant) walls consist of drilled holes filled with concrete that forms continuous arrays of interlocking shafts that are periodically reinforced with vertical steel piles to create an excavation support system..
Staging	Staging indicates the set-up of fenced off work area and installation of temporary bus platforms as required on the corridor.
Pole	A structure used to support overhead lines.
OMSF	OMSF stands for Operations, Maintenance and Safety Facility of the Hurontario LRT. It is located just south of Hwy.407 at the border of Brampton and Mississauga.
Girder	A girder is a horizontal support beam used to strengthen bridges and other structures.
TPSS	TPSS stands for Traction Power Substation. They ensure a consistent level of power to the Light Rail Vehicles.
French Drainage System	The French Drainage System consists of a trench filled with gravel or rock or pipe to divert water away from an area. It is used to prevent water damage to building foundations. This will be installed at the OMSF site.

# APPENDIX A: GLOSSARY OF CONSTRUCTION TERMS

Term	Definition
Switchgear	Switchgear systems ensure reliable power distribution, power energy control, protection and monitoring.
Sump Pit	Excavated area that collects ground water and debris to be filtered away from the foundation of a building or structure
Commissioning	The process of bringing a utility system into operation