

Hurontario Light Rail Transit Project

Construction Liaison Committee

Cooksville &
Mississauga Centre

March 2022



LAND ACKNOWLEDGEMENT

Let us take a moment to acknowledge that we are on the traditional territory of Indigenous Peoples including the Anishnabeg, the Haudenosaunee and the Wendat peoples.

We are all Treaty people. Many of us have come here as settlers and immigrants... in this generation or generations past.

Metrolinx declares its commitment to building meaningful relationships with Indigenous Peoples.

We acknowledge we have a responsibility to recognize and value the rights of Indigenous Peoples and conduct business in a manner that is built on the foundation of trust, respect and collaboration.

We acknowledge the historic and continued impacts of colonialization, the many broken promises and Treaties, and the need to work towards reconciliation with the original caretakers of this land... today and for future generations.

OUR MANDATE

The Construction Liaison Committee is a communications forum to provide open, two-way communication and dissemination of information with stakeholders, elected officials, area residents and businesses related to construction for the Hurontario Light Rail Transit Project including construction activities, short- and long-term impacts, steps being taken to address impacts and community engagement and outreach.

AGENDA: March 2022

Welcome & Introductions

Safety Moment

Action Items

Construction Progress

Mississauga Cooksville: Construction Update

Mississauga Centre: Construction Update

Community Engagement

Round Table Discussion



Safety Moment

EVERYONE HOME SAFE, EVERY DAY

Safety is at the core of everything we do and while we can't legislate for unsafe behaviors, we can commit to building awareness in order to help mitigate it.

To increase awareness around worksite safety, we would like to remind everyone of our commitment to worker and pedestrian safety. After receiving multiple complaints of unsafe traffic movements, the project took immediate action to install additional high visibility signage along Hurontario Street and increased safety messaging across social media.

We ask that the community, motorists, pedestrians and cyclists:

- Practice patience and plan-ahead to avoid delays.
- Adhere to posted speed limits and other signage on the road.
- Avoid distractions while driving.
- Treat construction zones as if they were your own workplace.

Our goal remains that everyone gets home safe, every day.



Action Items

Review of Action Items

Provide an image of how the pushbox structure at the QEW will look like when complete.

- A new passageway under the QEW will be created on the east side of the current Hurontario road alignment. The current underpass will accommodate southbound vehicle traffic and the LRT guideway. The new passageway will accommodate northbound traffic on Hurontario. We currently do not have a rendering of the future underpass. Please stay tuned for more visuals as the works begin and progress this year.

Construction Progress

CONSTRUCTION PROGRESS: UTILITIES



Wet Utilities Completed to Date

- ✓ Watermain - 6.1 Km of pipe installed to date
- ✓ Storm - 3.3 Km of pipe installed to date
- ✓ Sanitary - 1.7 Km of pipe installed to date
- ✓ **Total of all wet utilities is 11.5 Kms**



Dry Utilities Completed to Date

- ✓ 88 Hydro poles installed
- ✓ 5.06 Km of concrete encased underground hydro duct banks installed
- ✓ 6.12 Km of underground hydro cable installed
- ✓ 30.81 Km of aerial conductor installed





Mary Fix Creek - Channel Excavation



Mary Fix Creek - Channel Excavation



Lakeshore West Push Box



Port Credit Station - Excavation

BRINGING THE LRT TO PORT CREDIT GO

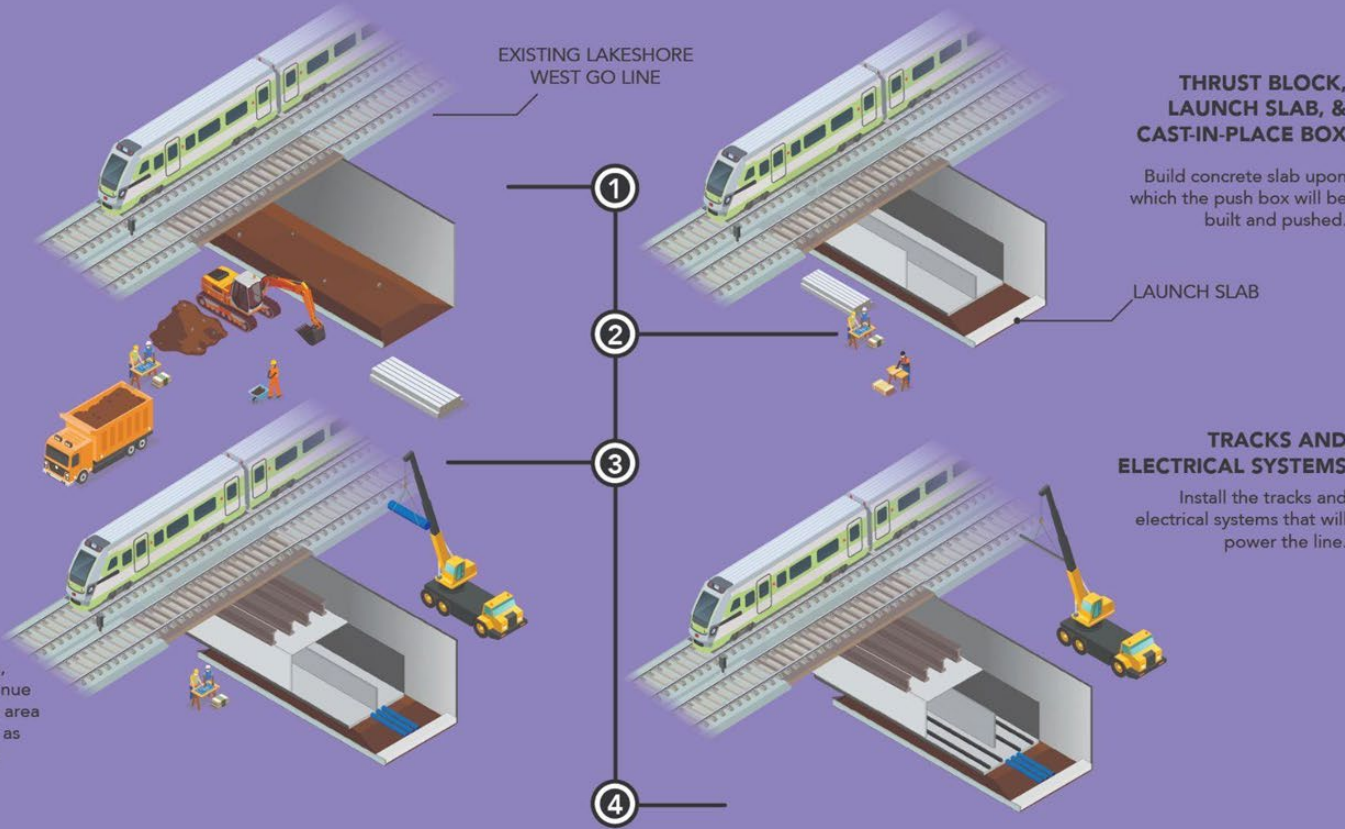
Work for the push box at Port Credit Station is ongoing. The push box is a large, hollow concrete box that will be pushed underneath the Lakeshore West GO line at the Port Credit GO Station. This will create a tunnel under the rail tracks, allowing the future HuLRT line to move without disrupting rail service on the tracks above. Here are the steps involved in the process:

SHORING WALLS & EXCAVATION

Excavate area and build the supports for the push box.

TEMPORARY BRIDGE SUPPORTS AND BOX JACKING

Install temporary bridge supports, which allows train service to continue overhead. The area below continues to be excavated as the push box is moved into place using hydraulic rods.



CONSTRUCTION UPCOMING

Brampton South

- Tree protections
- Staging on both sides of Hurontario Street between Bartley Bull Parkway and Brampton City Limits are expected to begin by the end of March
- Wet Utilities set to begin once traffic staging is complete (watermain, sanitary and storm)
- Installation of guideway, tracks, and OCS poles at the OMSF are ongoing, and connecting guideway infrastructure onto Edwards Boulevard
- Electrical connections and the overhead steel platforms are being installed at the OMSF building

Mississauga South

- Sanitary structure installations will continue along the east side of Hurontario until the end of March
- Hydro Pole, aerial cable works, and duct banks continue along Hurontario
- Alectra relocations are progressing north of Mineola Road towards the QEW
- Site preparation, including clearing and grubbing of vegetation and sidewalk demolition, set to occur near the QEW in advance of the Push Box activities later this year
- Work continues at Mary Fix Creek to expand and revitalize the creek bed
- Work continues at the Lakeshore West Push Box with the construction of a temporary bridge in advance of the underpass installation

Mississauga North

- Storm and watermain installations continue between Eglinton Avenue and Matheson Boulevard as well as between Derry Road and Topflight Drive
- Alectra relocations, road widening, and new curb installations continue between Matheson Road and HWY 401 as well as along Britannia Road, including the installation of transformers and switchgear
- Road widening between Matheson to HWY 407 continues with excavation and the installation of subdrains
- Installation of permanent street light installations continue between Matheson Road and Britannia Road as well as between Derry Road to HWY 407



TRACK INSTALLATION

Guideway construction in preparation for track installation along Hurontario Street will progress from south to north, beginning between Matheson Boulevard and Britannia Road.

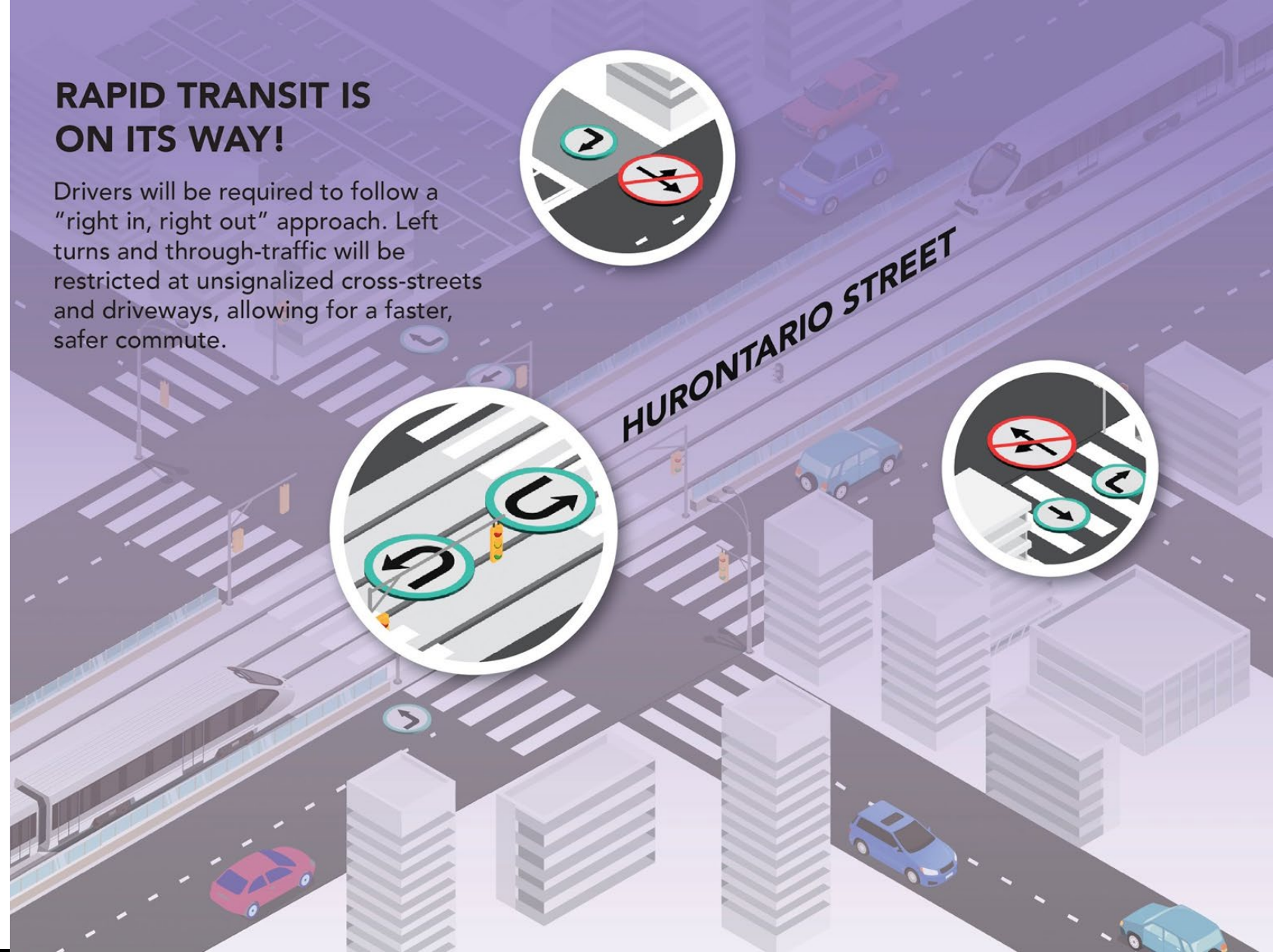
Construction will occur in the mid-block sections (the areas between intersections) with minimal/no impact to pedestrians and traffic flows at intersections for this stage of work. Work will occur in all of the mid-block zones simultaneously and will take approximately four months to complete in this area.

Once the guideway is constructed, the configuration in the centre of the roadway will be permanent, prohibiting U-turns and left-turns across the tracks at undesignated locations.

Traffic staging and initial works are underway.

RAPID TRANSIT IS ON ITS WAY!

Drivers will be required to follow a "right in, right out" approach. Left turns and through-traffic will be restricted at unsignalized cross-streets and driveways, allowing for a faster, safer commute.



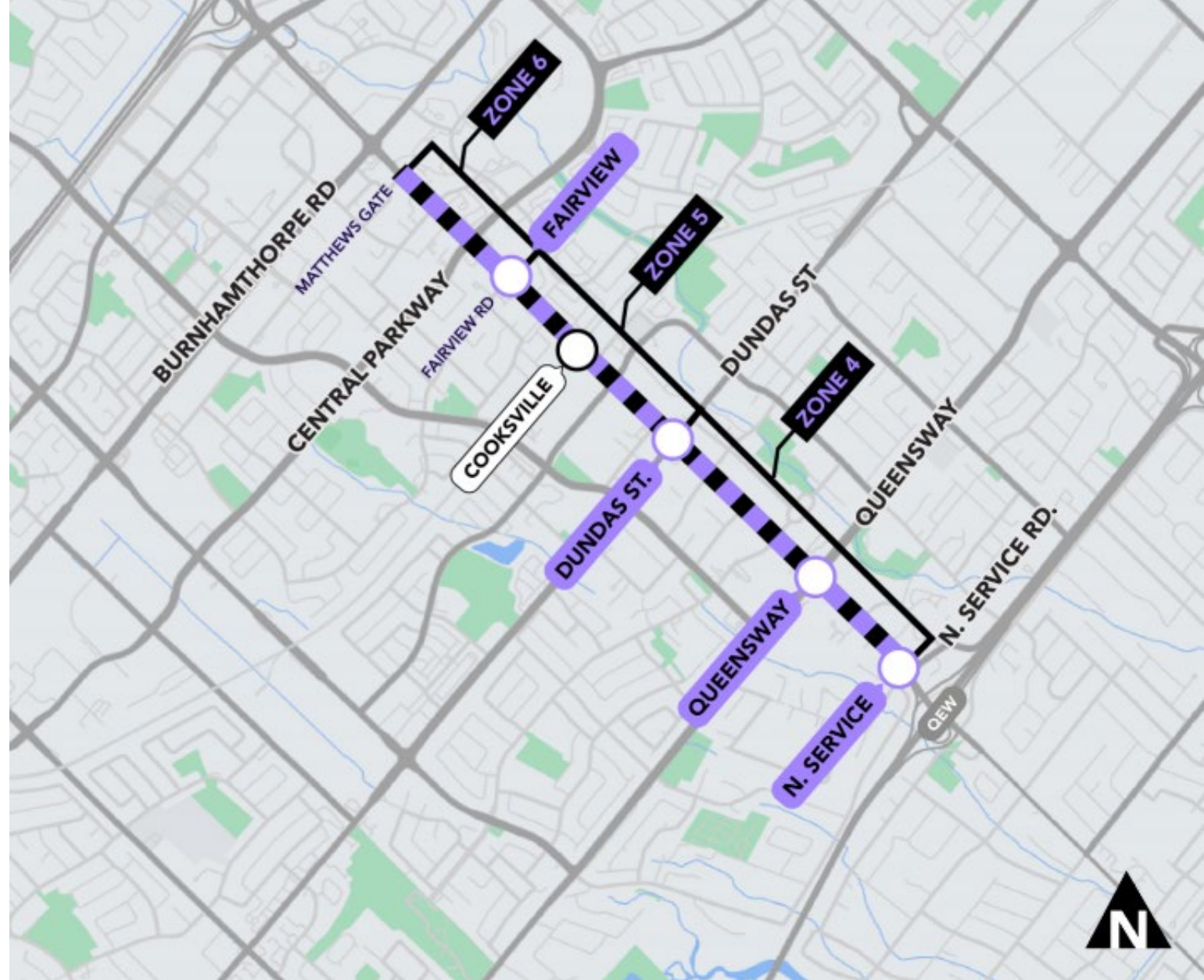
Cooksville

COOKSVILLE WORK ZONES

Work Zone 4 – North Service Road to Dundas Street

Work Zone 5 – Dundas Street to Fairview Road

Work Zone 6 – Fairview Road to Matthews Gate



CONSTRUCTION PROGRESS

Ongoing

Work Zone Four to Six

- Tree removals
- Watermain installation between Paisley Boulevard to Dundas Street and between Fairview to Burnhamthorpe
- Nighttime work will be required between the Queensway and Dundas Street on some nights between March 20 and April 29, 2022
- Temporary closures of a portion of Floradale, Agnes St and Paisley Boulevard at Hurontario Street will be required

Upcoming

Work Zone Four to Six

- Storm sewer work will begin between Dundas Street and Matthews Gate
- Start of hydro relocations followed by telecom infrastructure relocations





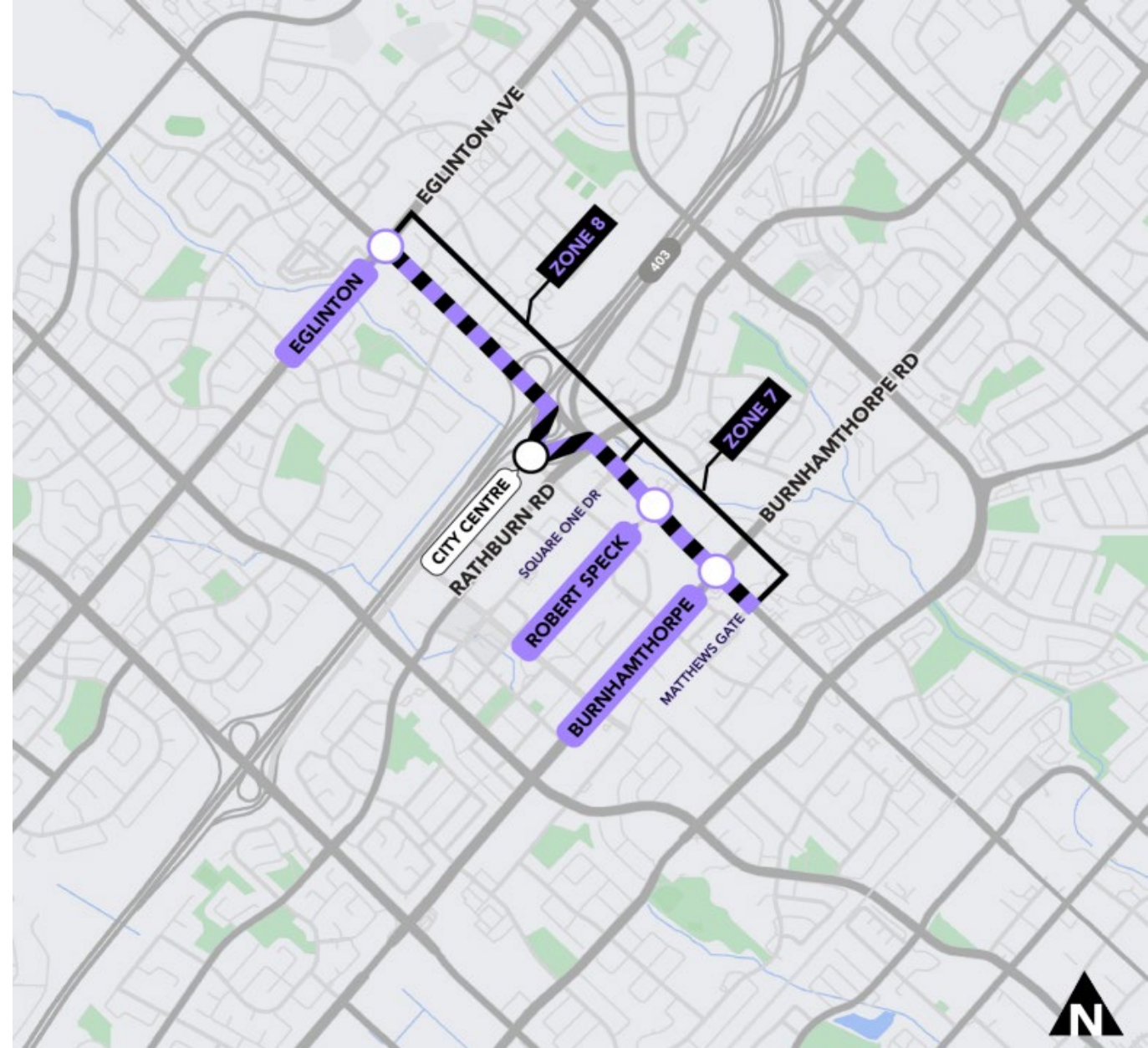
Watermain Installations in Cooksville

Mississauga Centre

MISSISSAUGA CENTRE WORK ZONES

Work Zone 7 – Matthews Gate to Square One Drive

Work Zone 8 – Square One Drive to Eglinton Avenue



CONSTRUCTION PROGRESS

Completed

Work Zones Seven and Eight

- Temporary bus platforms installed between Matthews Gate and Square One Drive

Ongoing

Work Zones Seven and Eight

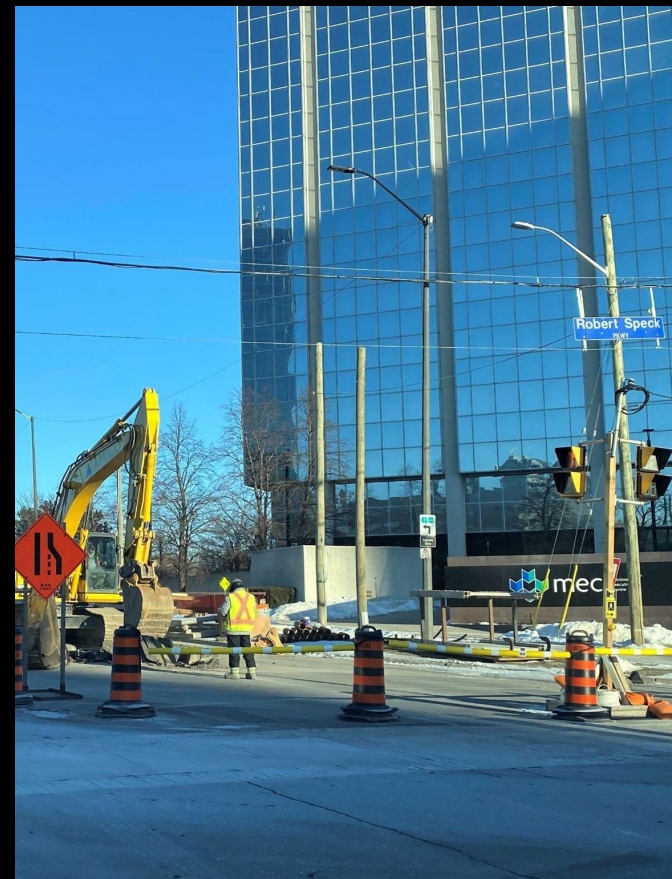
- Tree removals
- Energizing of new signals on Hwy. 403 MTO ROW
- Installation of watermain has begun between Robert Speck Parkway and Square One Drive
- Sanitary relocations continue on Rathburn Road including some nighttime and weekend work
- Construction of piers continues for elevated guideway near Hwy. 403
- 600mm CPP watermain installation has begun on Rathburn Road
- Removal of asphalt and concrete curbs from Hammerson to Rathburn bridge

Upcoming

Work Zones Seven and Eight

- Installation of temporary bus platforms north of Square One Drive
- Watermain and sanitary on Hurontario Street





Construction Activities in Mississauga Centre

Community Engagement

WHAT HAVE WE BEEN UP TO?

Community Engagement staff are out in the public speaking to residents and businesses where and when it makes sense while following all COVID 19 guidelines to keep ourselves and members of the community safe.

What have we been up to?

- Virtual and on-site meetings across Mississauga and Brampton
 - Tree impacts and grading impacts
 - Driveway impacts from wet and dry utility relocation
- Gradual reopening of community offices

The HuLRT is getting a name!

- Peel Region's newest rapid transit line, the Hurontario light rail transit route is getting a name, honouring one of Canada's longest serving mayors
- The project will continue to be referred to as the Hurontario LRT while construction is underway but will adopt the name once the line opens.
- Learn more about it on our blog: <https://blog.metrolinx.com/2022/02/14/hurontario-lrt-to-be-named-after-long-time-mississauga-mayor-hazel-mccallion/>
- Listen to a Metrolinx podcast with Hazel McCallion on having an LRT named in her honour: <https://blog.metrolinx.com/2022/02/17/between-the-lines-podcast-the-naming-of-the-hazel-mccallion-lrt/>



WHAT IS AHEAD?

- We are approaching the “writ period” which is a period that falls immediately before election day.
- During this time, CLC communications (e-update and virtual meeting) will not be held until after the election. Large scale public engagement, including virtual opening houses and public information sessions will also not be held during this time.
- Construction, operations and communication with the community via notices, email, calls and 1:1 meetings will continue throughout, as work progresses on the project.
- Community Engagement is still here for you to answer your questions as major construction continues along Hurontario Street.
- We’re always available via phone or email, and we’re available in person at one of our two offices by appointment.

GET IN TOUCH WITH US!

Questions?

Ask us at metrolinxengage.com

Or contact us by phone, email, or on social media.

Stay up to date with Metrolinx projects in your region!
[Metrolinx.com/peel](https://metrolinx.com/peel)



Hurontario LRT Community Offices

Phone: 416-202-7500

Email: peel@metrolinx.com

3024 Hurontario Street unit G12
Mississauga, ON. L5B 4M4

17 Ray Lawson Blvd unit 9
Brampton, ON. L6Y 5L7



@HurontarioLRT

Sign Up

for Peel Region updates and more from Metrolinx

Email*

Subscribe

Subscribe for the latest news from Metrolinx. You can unsubscribe at any time. Your personal information is being collected under the authority of the Metrolinx Act, 2006 in order to provide you with email communications about Metrolinx services.

For questions, contact: Manager, Customer Contact, Metrolinx, 20 Bay St, Toronto, ON, M5J 2W3, (416) 869-3600.

Round Table Discussion



APPENDIX A: GLOSSARY OF CONSTRUCTION TERMS

Term	Definition
Culvert	Culverts are small channels that allow water to run under a road or railroad structure.
Wet Utilities	Examples of wet utilities are sanitary, storm water (rainwater), water main (potable water, fire hydrants)
Dry Utilities	Examples of dry utilities are power, underground conduits, fiber optics (telecommunications).
Guideway	The guideway is the structure the LRVs will operate at the HWY 403 crossing. This includes steel tracks, the concrete pads for tracks, and OCS poles. The elevated guideway is a structure with tracks raised above the street level, and civil works for the guideway includes anything below the grade of the guideway (duct banks for electrical cables, drainage etc.)
Roads, Curbs, Sidewalks	This involves preliminary works including drainage, catch basins, temporary paving, new curbs, sidewalks, and boulevards etc. Final paving and reinstatement occur as a part of the final landscaping and design package.
Push Box	An innovative method which uses hydraulic jacks & spreaders to move a cast-in-place concrete box carrying the entire underpass in a short period of time. It causes minimal disruption to surrounding traffic.
RSS/Retaining Wall	Retained Soil Systems Wall. The purpose of this wall is to retain soil in order to protect a change in grade.
Track works	Track works are at grade.

APPENDIX A: GLOSSARY OF CONSTRUCTION TERMS

Term	Definition
Hydro Duct Bank	A grouping of hydro cables buried underground or encased in concrete.
Flood Wall	A wall built to prevent inundation by high water.
Caisson Wall	Caisson (or secant) walls consist of drilled holes filled with concrete that forms continuous arrays of interlocking shafts that are periodically reinforced with vertical steel piles to create an excavation support system..
Staging	Staging indicates the set-up of fenced off work area and installation of temporary bus platforms as required on the corridor.
Pole	A structure used to support overhead lines.
OMSF	OMSF stands for Operations, Maintenance and Safety Facility of the Hurontario LRT. It is located just south of Hwy.407 at the border of Brampton and Mississauga.
Girder	A girder is a horizontal support beam used to strengthen bridges and other structures.
TPSS	TPSS stands for Traction Power Substation. They ensure a consistent level of power to the Light Rail Vehicles.
French Drainage System	The French Drainage System consists of a trench filled with gravel or rock or pipe to divert water away from an area. It is used to prevent water damage to building foundations. This will be installed at the OMSF site.

APPENDIX A: GLOSSARY OF CONSTRUCTION TERMS

Term	Definition
Switchgear	Switchgear systems ensure reliable power distribution, power energy control, protection and monitoring.
Sump Pit	Excavated area that collects ground water and debris to be filtered away from the foundation of a building or structure
Commissioning	The process of bringing a utility system into operation