

# King City GO: Installation of Precast Relief Culverts

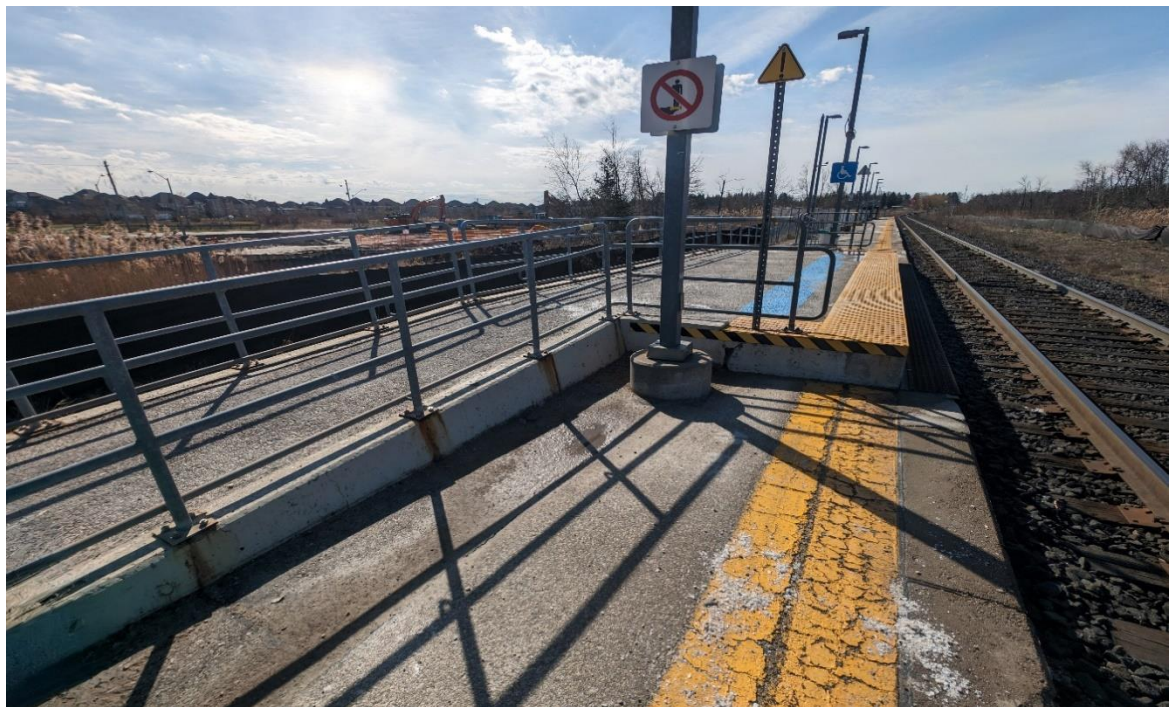
11:45PM Oct 11<sup>th</sup>- 2:00PM Oct 15<sup>th</sup> &  
10:00PM Oct 25<sup>th</sup>- 2:00PM Oct 28<sup>th</sup>

## Project Overview

GO service is expanding to serve you better - with more frequent service, more stations, cleaner technology, and more connections.

Across the entire network, our goal is to deliver over 10,000 train trips a week - so you won't need a schedule because you know

the next train will be coming soon. GO Expansion will transform the GO rail network from a commuter service into an all-day, rapid system.



## What You Need to Know

Metrolinx is continuing to make progress on upgrades to the Barrie rail corridor in support of GO Expansion!

During two upcoming major track closures on the Barrie Line, we will complete the next phase of work on the platform at King City GO. Contractors will remove the existing accessible

platform, install three precast relief culverts, and then reinstall the platform.

These improvements will allow for improved water drainage to eliminate flooding and prepare for increased runoff due to the expansion of a future second track.

### **What to expect**

Nearby residents may experience noise and vibration from heavy construction equipment, including large excavators, cranes, and dump trucks. To mitigate noise disturbance, we will limit the amount of night work where possible and reduce unnecessary equipment idling.

We understand that we are conducting work near a residential area and that overnight work is not ideal. We appreciate your patience and will complete this work as efficiently as possible to get things back to normal for you.

### **Questions**

We have a dedicated community relations team in place to work with residents and businesses in the York Region. If you have any questions or concerns about this work, please contact us anytime at **[YorkRegion@metrolinx.com](mailto:YorkRegion@metrolinx.com)**.

Write to us at: **[YorkRegion@metrolinx.com](mailto:YorkRegion@metrolinx.com)**  
Call us at: **416-202-4453**  
Find us on Twitter **[@GOExpansion](https://twitter.com/GOExpansion)**  
Visit the website: **[Metrolinx.com/Kingcity](https://www.metrolinx.com/Kingcity)**

As with all construction, work may be adjusted, rescheduled or extended due to weather conditions or unforeseen circumstances.