

# UPDATE: Overnight Work: Retaining wall work for the Pedestrian Box Structure

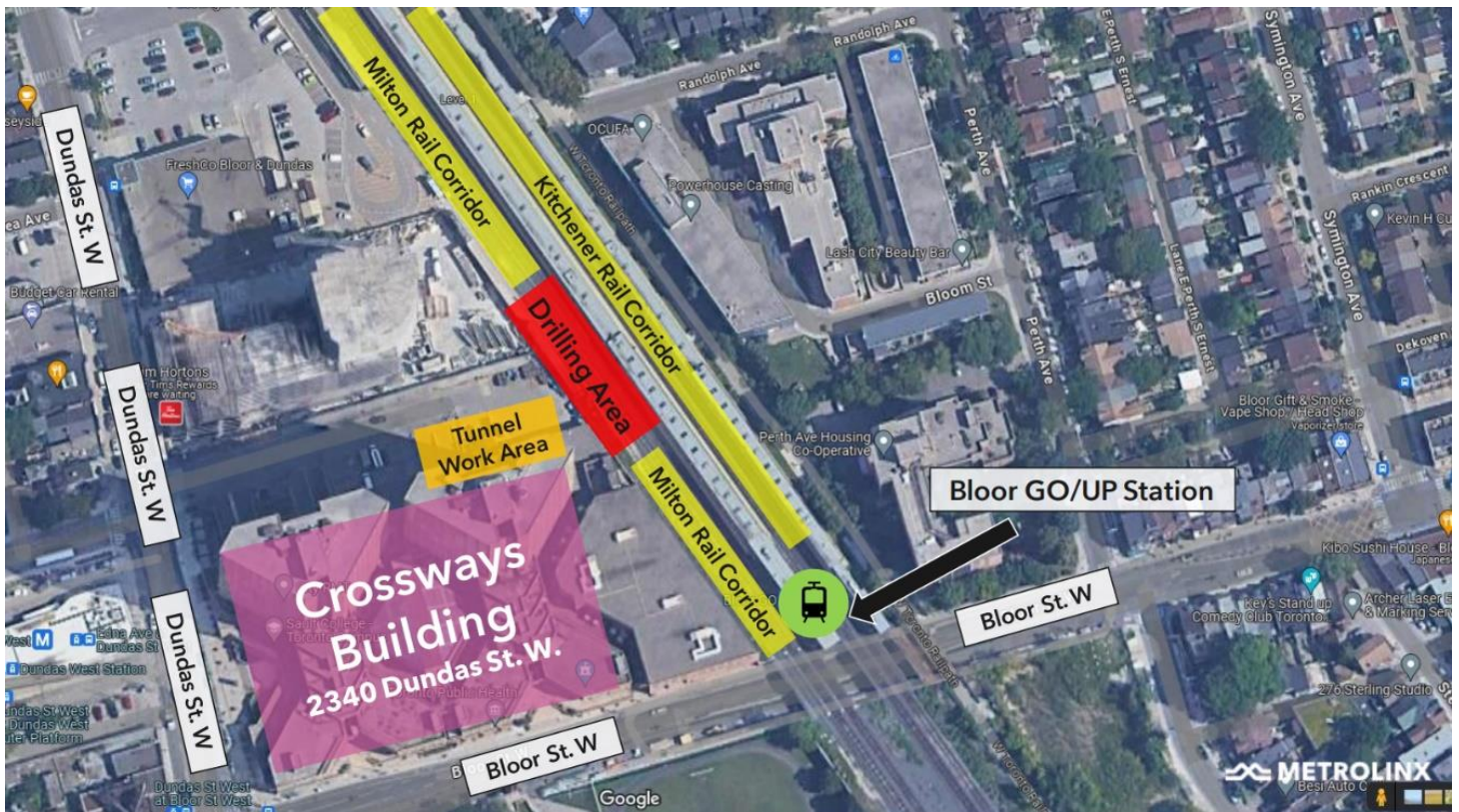


Figure 1: Aerial photograph showing the approximate location of the work zone. Not to scale. For illustrative purposes only. Metrolinx Image.

## Project Overview

As part of GO Expansion, Metrolinx is building a 270-metre underground pedestrian tunnel extension connecting Bloor GO/UP Station to Dundas West TTC Station. When finished, customers will have an accessible and safe pedestrian connection between GO Transit, UP Express and TTC services, to better support customers travelling throughout Toronto. This project supports the development of a regional rapid transit network that offers seamless connections to more stations and faster trains.

## What You Need to Know

The contractor for the Bloor GO (TTC connection) project will begin jet grouting in early September as part of the Pedestrian Box structure, affecting the area highlighted in red above.

Information as of: October 29, 2024

Once jet grouting is complete, excavation and construction of the Pedestrian Box structure will follow, with completion expected by Winter 2025. Electrical and mechanical work inside the structure will begin afterward. This work will not impact commuter access to the Bloor GO station or its railway operations. Most activities are scheduled for nighttime hours (8:30 p.m. to 5:00 a.m. Sunday night to Saturday morning), and there may be some noise and light impact in the surrounding area.

## WHAT TO EXPECT

- Heavy machinery including drill rigs and lighting towers.
- An elevated presence of construction workers in the drilling area.
- Elevated noise level and light levels to the residences surrounding the project area.
- Elevated vibration levels to the residences surrounding the project area.
- All efforts will be made to minimize community impacts.

## HOURS OF WORK

- 8.30 p.m. to 5 a.m. (Sunday night to Saturday morning - 5 nights a week) until Winter 2025.
- Please note, dates may be changed due to inclement weather or unforeseen circumstances.

## PEDESTRIAN DETAILS

- No impact to the commuters accessing the Bloor GO station.

## TRANSIT INFORMATION

- No impact to the train operations from the Bloor GO station.

## TRAFFIC DETAILS

- No impact to the traffic accessing the Bloor GO station.

## COMMUNITY ENGAGEMENT

- Metrolinx has a dedicated community engagement team in place that works with residents and businesses in the Toronto West area.
- If you have any questions, please contact us using the information provided below.

Information as of: October 29, 2024

This notice can be translated into a different language upon request by emailing us at [TorontoWest@metrolinx.com](mailto:TorontoWest@metrolinx.com)

Cet avis est disponible en français sur demande. Si vous êtes intéressé, veuillez envoyer un courriel à [TorontoWest@metrolinx.com](mailto:TorontoWest@metrolinx.com)

Contact Us:

Call us: 416-202-6911

Write to us at: [TorontoWest@metrolinx.com](mailto:TorontoWest@metrolinx.com)

Find us on X: [@GOExpansion](https://twitter.com/GOExpansion)

Visit the website: [www.metrolinx.com/kitchener](http://www.metrolinx.com/kitchener)

Subscribe to our e-blast: [www.metrolinx.com/subscribe](http://www.metrolinx.com/subscribe)