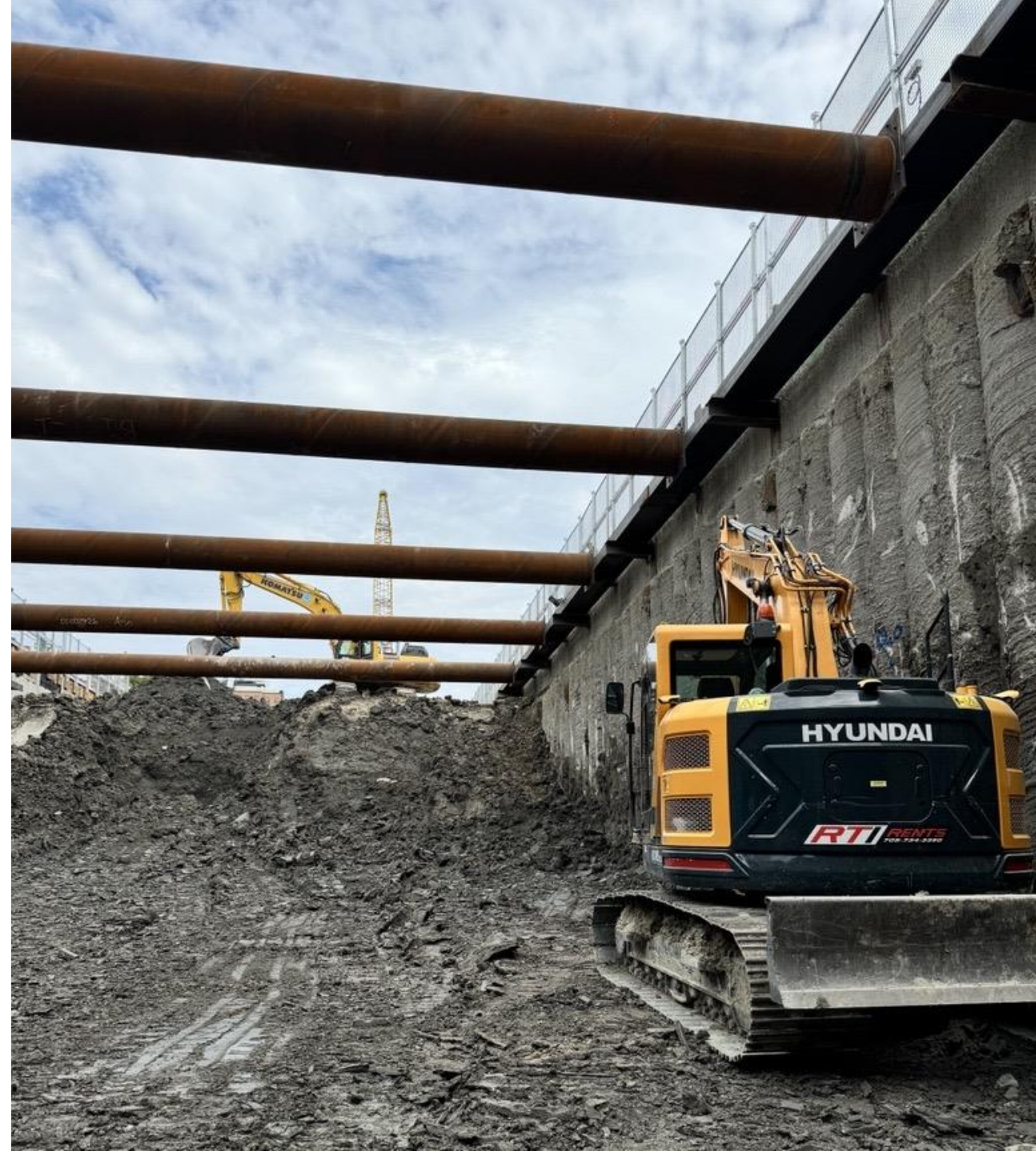


Ontario Line

Moss Park Construction Liaison Committee

October 10, 2024

 METROLINX



Agenda

Welcome (5 minutes)

- Introductions
- Land Acknowledgement
- Safety Moment

Presentation (25 minutes)

- Review of Action Items
- Moss Park Construction Updates
- Community Engagement
- We Are Here For You

Feedback and Discussion (30 minutes)



Safety Moment - Autumn Awareness: Safety Tips for the Fall Season

- **Watch for Wet Leaves:**
Slippery surfaces can form with fallen leaves, especially after rain. Walk and drive carefully in leaf-covered areas.
- **Check Outdoor Lighting:**
Ensure walkways and entrances are well-lit as daylight hours shorten to prevent accidents.
- **Wear Appropriate Footwear:**
Choose shoes with good traction to navigate slippery sidewalks and driveways as temperatures drop.
- **Prepare for Colder Weather:**
Dress in layers for unpredictable fall temperatures to stay warm and comfortable.
- **Stay Safe with Yard Work:**
Use proper equipment when raking leaves and practice ladder safety on stable surfaces to avoid injuries.
- **Be Aware of Road Conditions:**
Wet roads and early morning frost can be hazardous. Slow down and maintain a safe distance while driving.



SEPTEMBER CLC ACTION ITEMS - COMPLETED

#	ACTION ITEM	RESPONSE	STATUS
1	OTG/Metrolinx to provide an update on the community art process.	The community artwork survey closed on August 23, 2024. OTG/Metrolinx compiling a report of responses and reviewing various strategies to invite local artists, students and community groups to carry out the community's feedback on the hoarding.	Ongoing

SEPTEMBER CLC ACTION ITEMS - PENDING

#	ACTION ITEM	RESPONSE	STATUS
1	No items pending		

Construction Update

Completed work

Crews are continuing excavation works, including:

- Struts and walers (phase 2) to support the excavation site
- Stair tower installation (shaft access)
- Additional site safety measures as work progresses:
 - Enhanced site illumination
 - Access and rescue system (Davit arm)



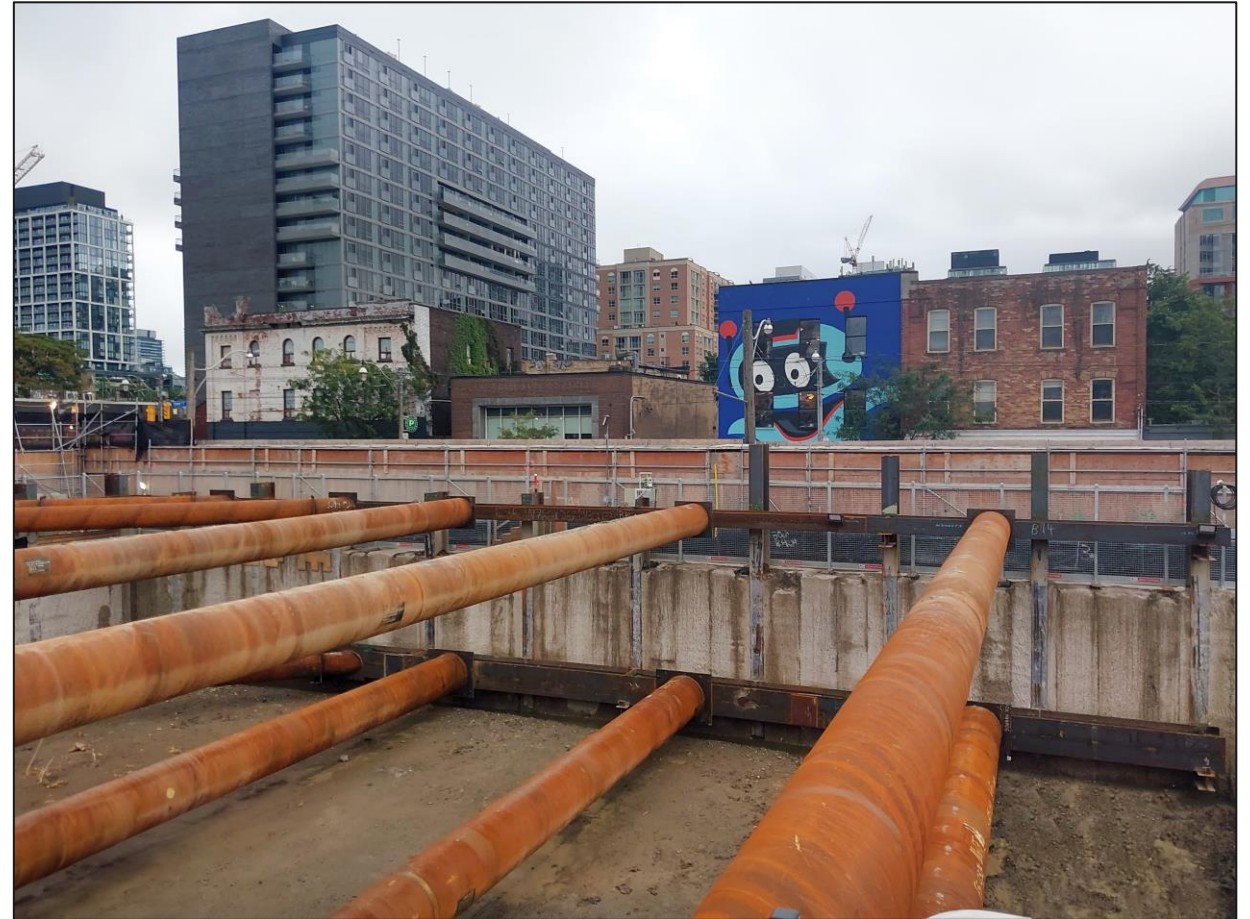
Davit arm rescue system

Struts and walers installation in the west (roof slab)



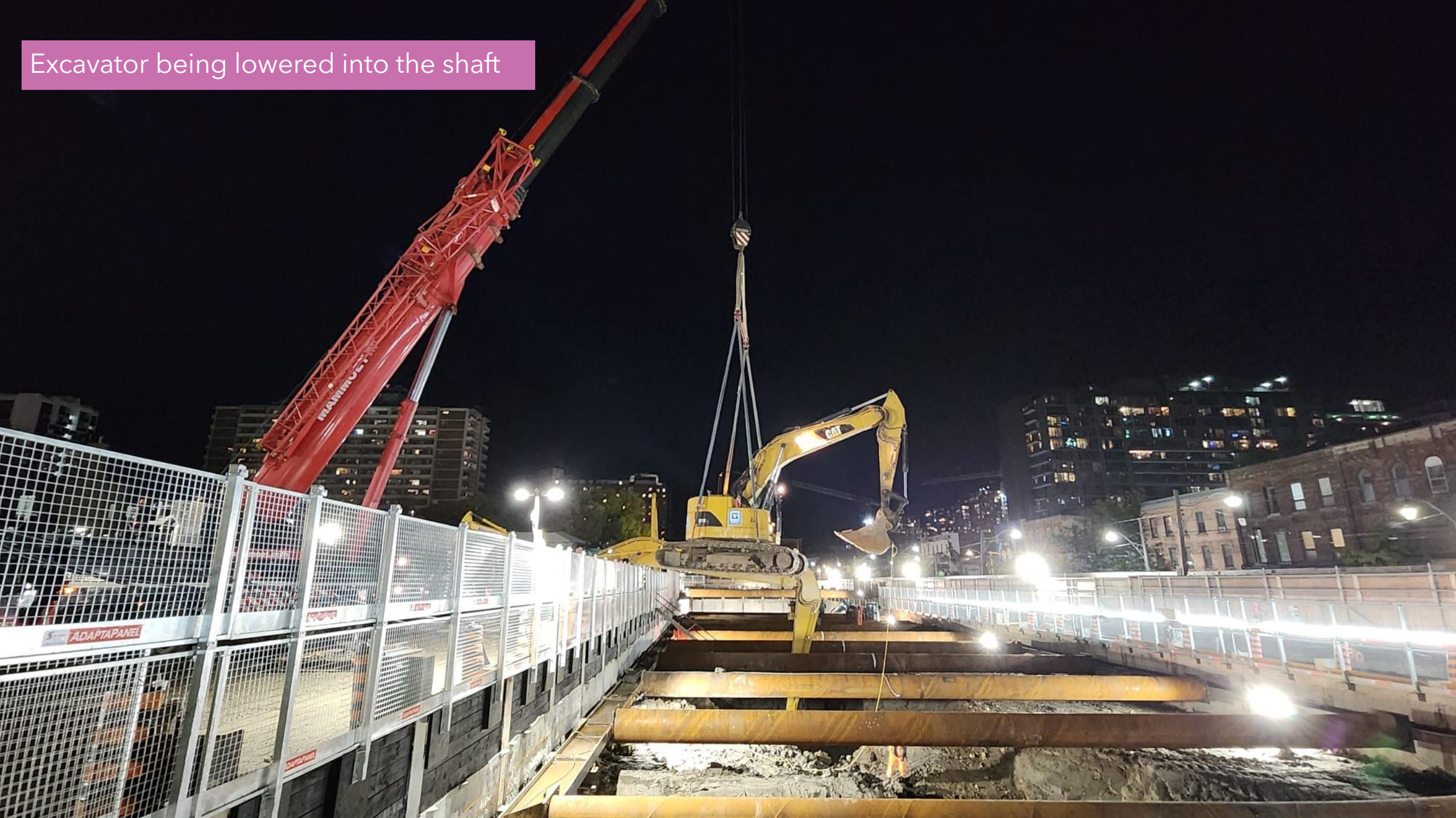
Current work

- **Excavation ongoing**
- **Installation of struts and walers**
- Power substation hydro connection
- Tower crane foundation installation
- Site maintenance (interior/exterior) ongoing



Struts and walers in the east (station building)

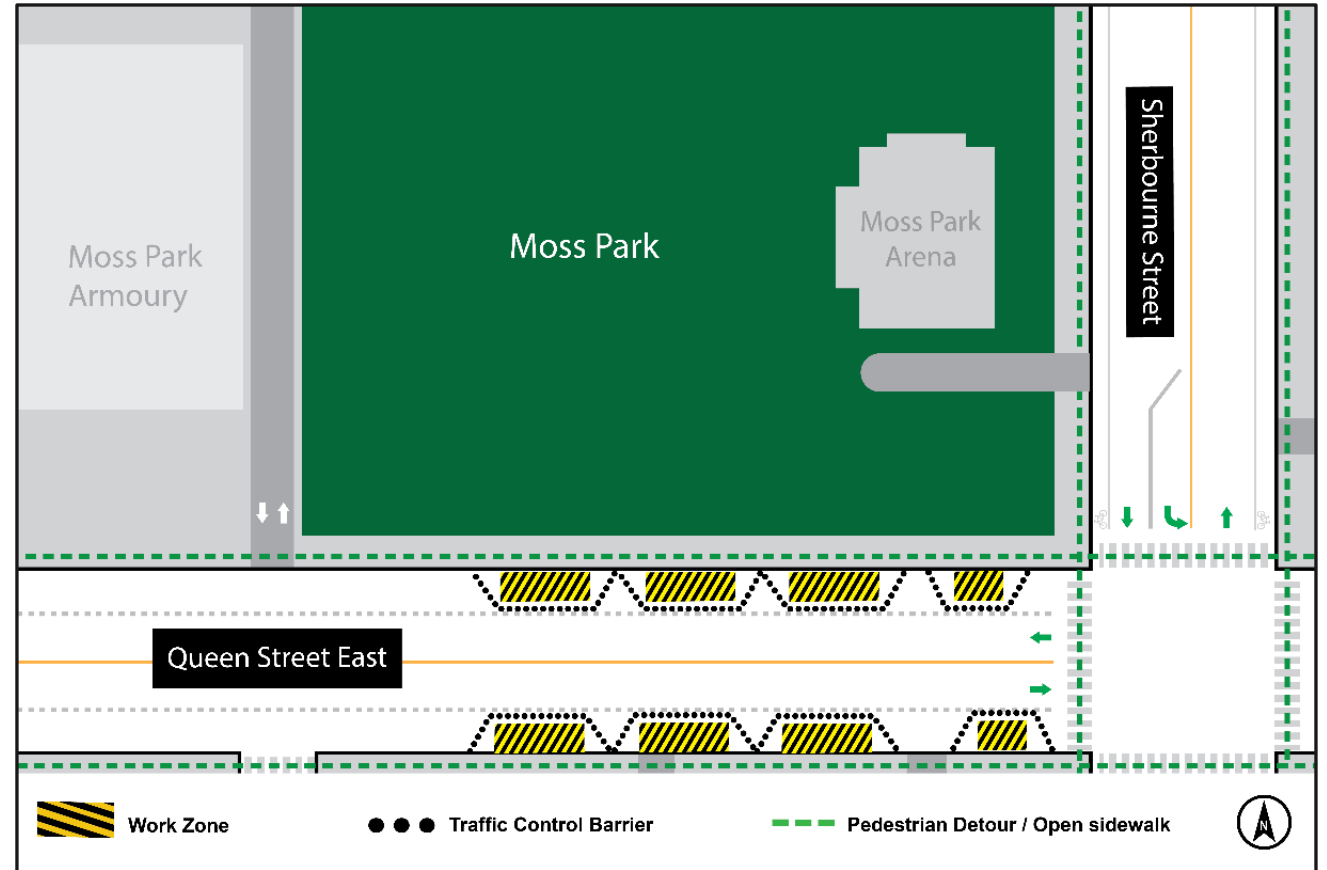
Excavator being lowered into the shaft



Current work

Installation of Utility Monitoring Sensors

- Installation to continue as early as October 7th for a period of up to seven (7) weeks, Monday - Friday, 9:00 a.m. to 5:00 p.m.
- Sensors will remain in place until the completion of construction
- Sensors monitor nearby infrastructure during construction to ensure no movements.



Map of affected area

Excavation in the east (station building)



Upcoming Work

Upcoming work

- Additional excavation, shifting to bedrock excavation (Winter 2024 - 2025)
- Wall anchors in shaft excavation
- Tower crane delivery and assembly
- Completion of struts and walers installation
- Paving through site access



Example of tower crane assembly



Community Engagement

Community Engagement Contact Information

We are here for you! Metrolinx will keep the community, residents and businesses informed by providing project updates.

Metrolinx will keep the community, residents and businesses informed by providing project updates, seeking input and feedback and addressing questions and concerns effectively and quickly.

Connect With Us:

- Zahrah Munas , Community Engagement Advisor Zahrah.Munas@metrolinx.com, 437-328-5354
- Mark Clancy, Senior Manager, Community Engagement Mark.Clancy@metrolinx.com, 647-449-2857
- Ontario Line at OntarioLine@metrolinx.com

Telephone 24/7 @ 416-202-5100

Ontario Line e-newsletter @ Metrolinx.com/OntarioLine

Follow us on social media @ OntarioLine

Discussion

