



**Ontario Line**  
**CLC Meeting #16**  
**Pape-Riverdale**

**August 27, 2024**

# AGENDA

## 1. Welcome

## 2. Construction Updates – Toronto Hydro & Rogers

- Trenching and duct bank installation
- Rogers chamber construction

## 3. Construction Updates – Sewer Work

- Phase 1
- Riverdale PUDO
- Future phases
- 449 Carlaw traffic setup and replacement parking

## 4. Additional Property Acquisitions

## 5. Environmental Updates

- Soil testing update
- Designated substance survey update

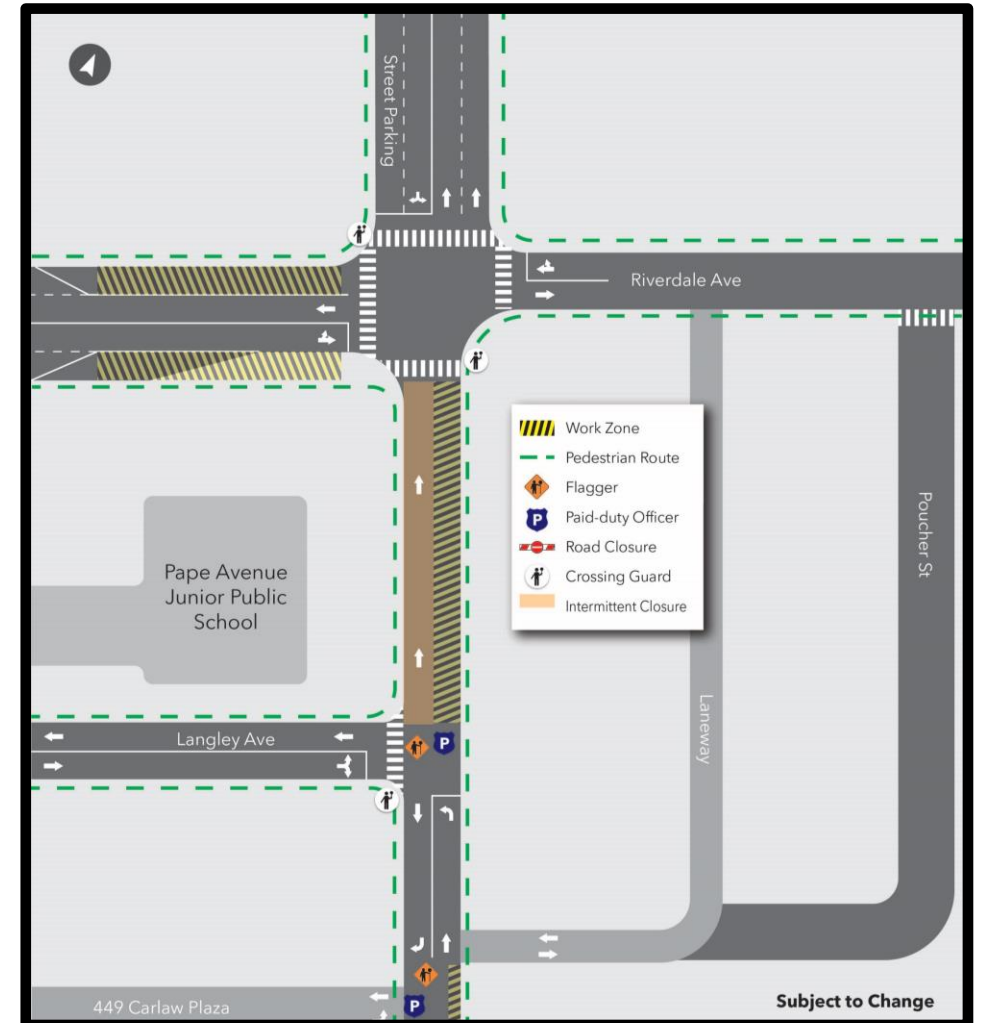
## 6. Action Items

## 7. Discussion

# **Construction Updates – Toronto Hydro and Rogers**

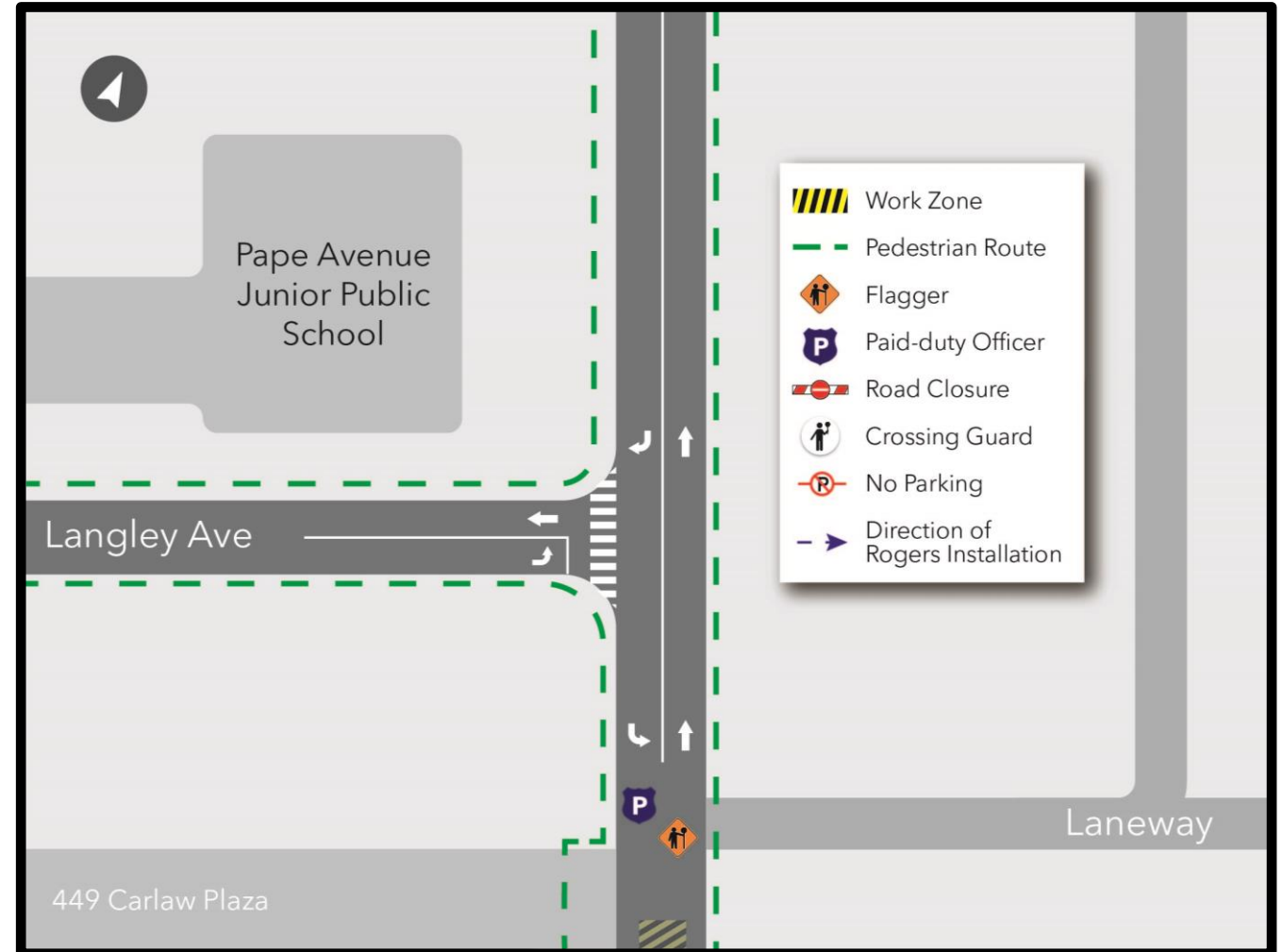
# Toronto Hydro Duct Bank Installation

- The second stage of duct bank installation for Toronto Hydro has been in place since mid-July.
- Crews are currently removing asphalt, concrete and soil, and installing duct banks, followed by backfilling and road restoration.
- Due to unanticipated ground conditions and weather-related impacts, work has been delayed and is now anticipated to be completed in late September. A more precise date will be communicated closer to completion.
- Crews will seek to maintain the west lane on Pape Avenue with northbound traffic where possible. Intermittent closures will be required.



# Rogers Chamber Build Completion

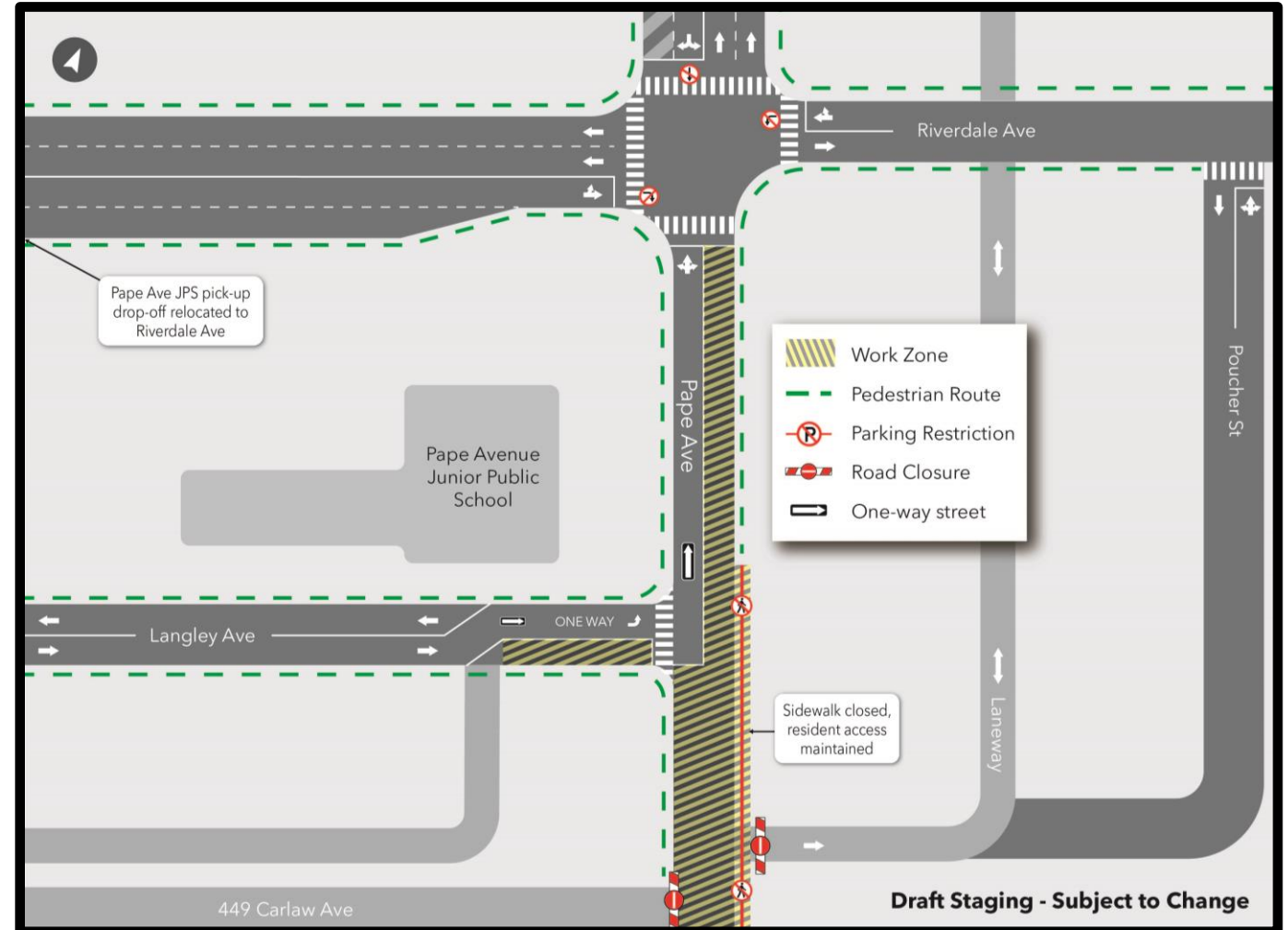
- Following the completion of Toronto Hydro's duct bank installation, Rogers' contractor Cybertec will return for one week.
- Work will involve the completion of the telecommunication chamber construction at the foot of Pape Avenue near the 449 Carlaw Plaza entrance.
- This work was previously scheduled to happen earlier this summer but was postponed to first allow Toronto Hydro installations in the area.



# Construction Updates – Sewer Work

# Sewer Relocation Work - Phase 1

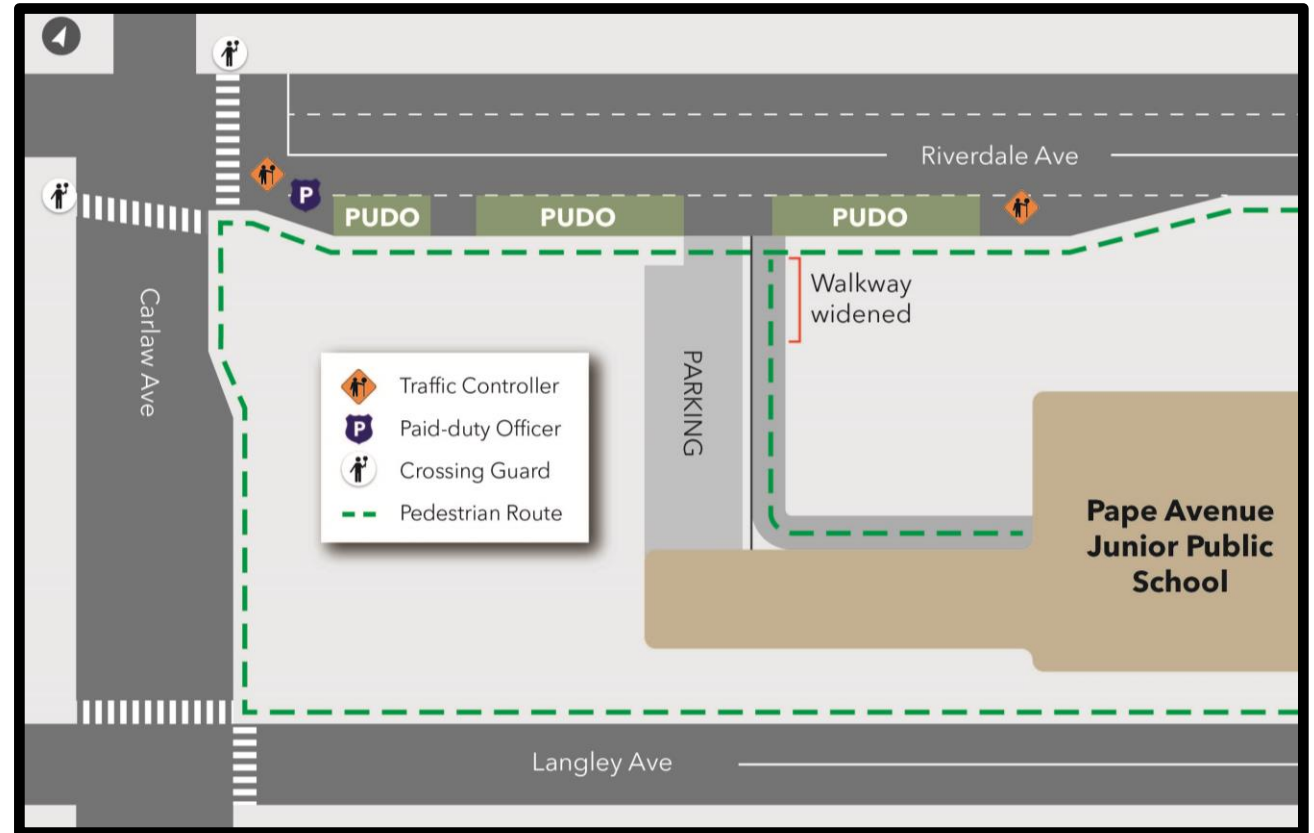
- **Works are currently scheduled to commence in late September to install a new combined sewer and water main on Pape Avenue between Riverdale Avenue and the 449 Carlaw plaza and remove the old sewer infrastructure.**
- Phase 1 will be the first of three phases to install a combined sewer down the east side of Pape Avenue. In addition, the relocation of Telus telecommunication lines on Pape Avenue and on Langley Avenue will be wrapped into this phase.
- Key impacts from phase 1:
  - Full closure of Pape Avenue between Langley and 449 Carlaw
  - Pape reduced to one lane northbound between Langley and Riverdale
  - Langley Avenue reduced to one lane south of Pape Avenue JPS
  - East-north one-way traffic from east end of Langley Avenue north to Riverdale Avenue.
  - Street parking removal on Langley Avenue adjacent to the work zone.





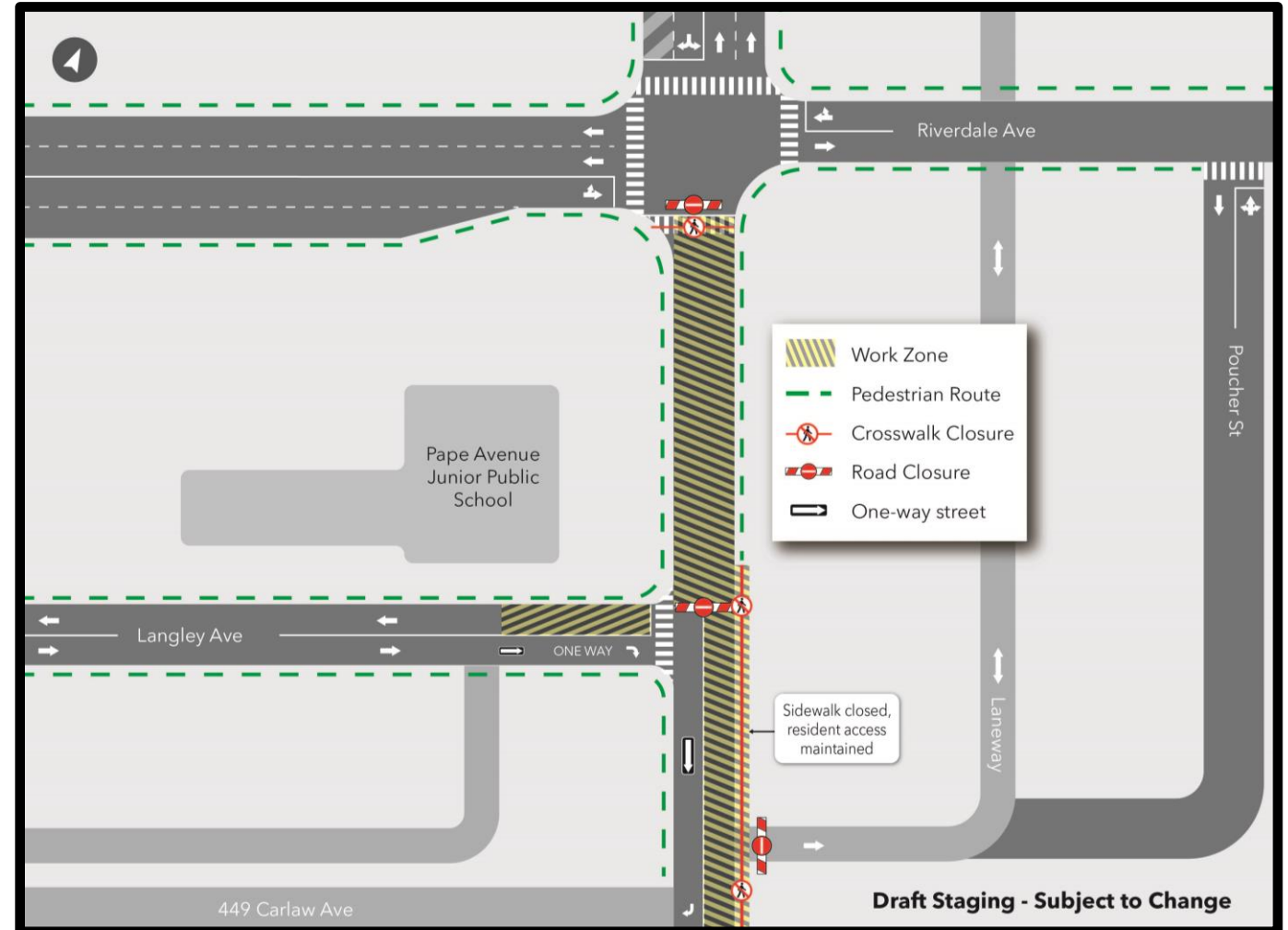
## Riverdale Pick-up Drop-off (PUDO)

- With the walkway into the school's property widened, the Riverdale PUDO is ready to be implemented for PAJPS families for the start of the school year.
- The 2024-2025 school year will begin with the Riverdale PUDO already in place; it will remain in place until the conclusion of sewer work on Pape Avenue.
- The TDSB has widened the walkway in the area shown on the graphic.
- Metrolinx is working with Pape Avenue JPS to communicate this change to parents ahead of the school year.
- Crossing guards, traffic control persons, and paid-duty officers will be on site to control traffic and assist where necessary.



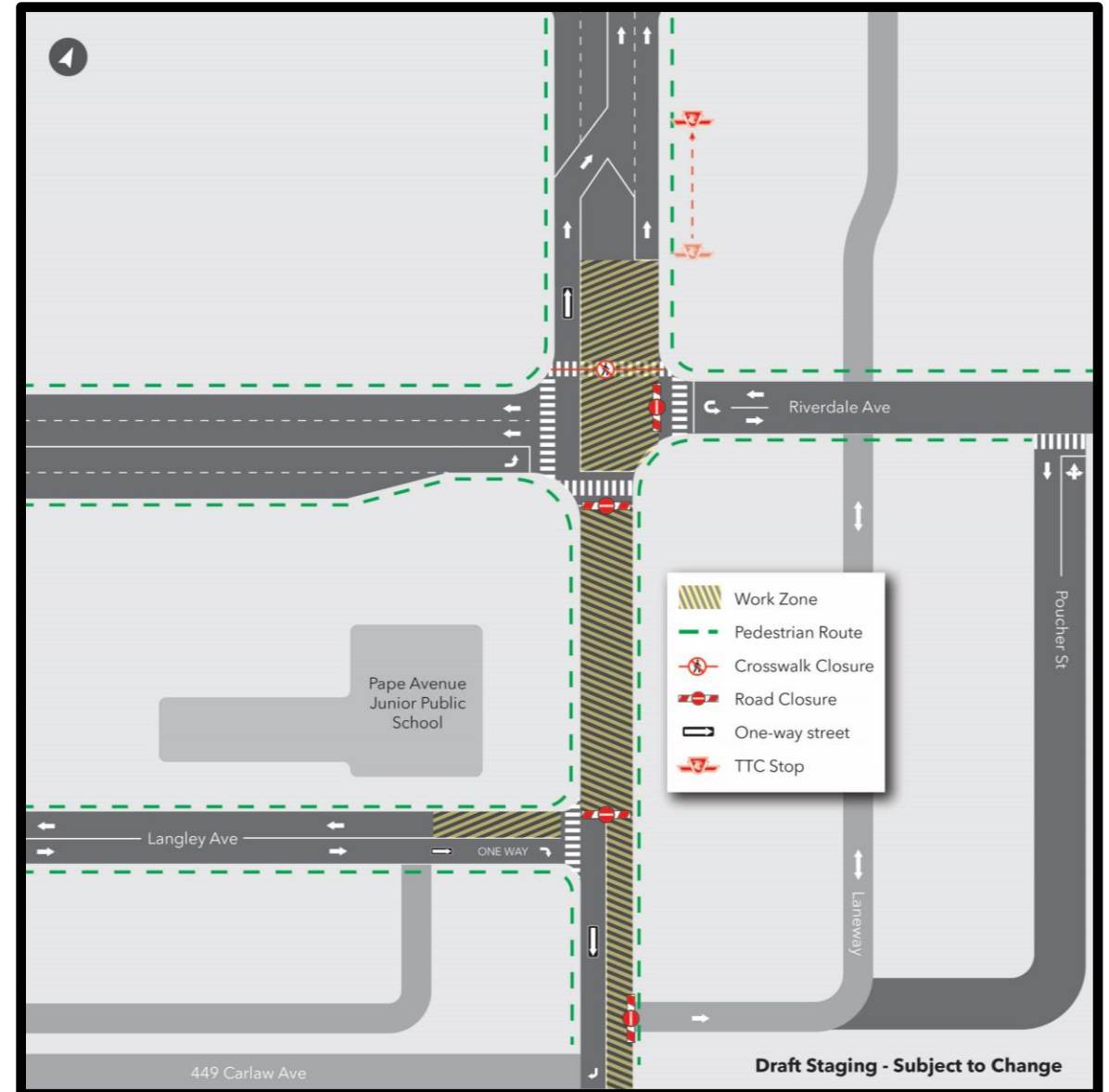
## Sewer Relocation Work - Phase 2A

- Phase 2A will continue combined sewer installation and will also mark the start of watermain installation.
- Key impacts from phase 2A:
  - Full closure of Pape Avenue between Langley and Riverdale
  - South crosswalk closure at Pape and Riverdale
  - Pape reduced to one lane southbound between Langley and the 449 Carlaw plaza.
  - No vehicular access to the laneway east of Pape and south of Langley
  - Langley Avenue reduced to one lane south of Pape Avenue JPS
  - East-south one-way traffic from east end of Langley Avenue south to 449 Carlaw plaza, with traffic exiting through the plaza
  - Street parking removal on Langley Avenue adjacent to the work zone.
- The work zone on Langley will alternate between the north and south side of the road. Pedestrian routes and traffic circulation will remain unchanged.



## Sewer Relocation Work - Phase 2B

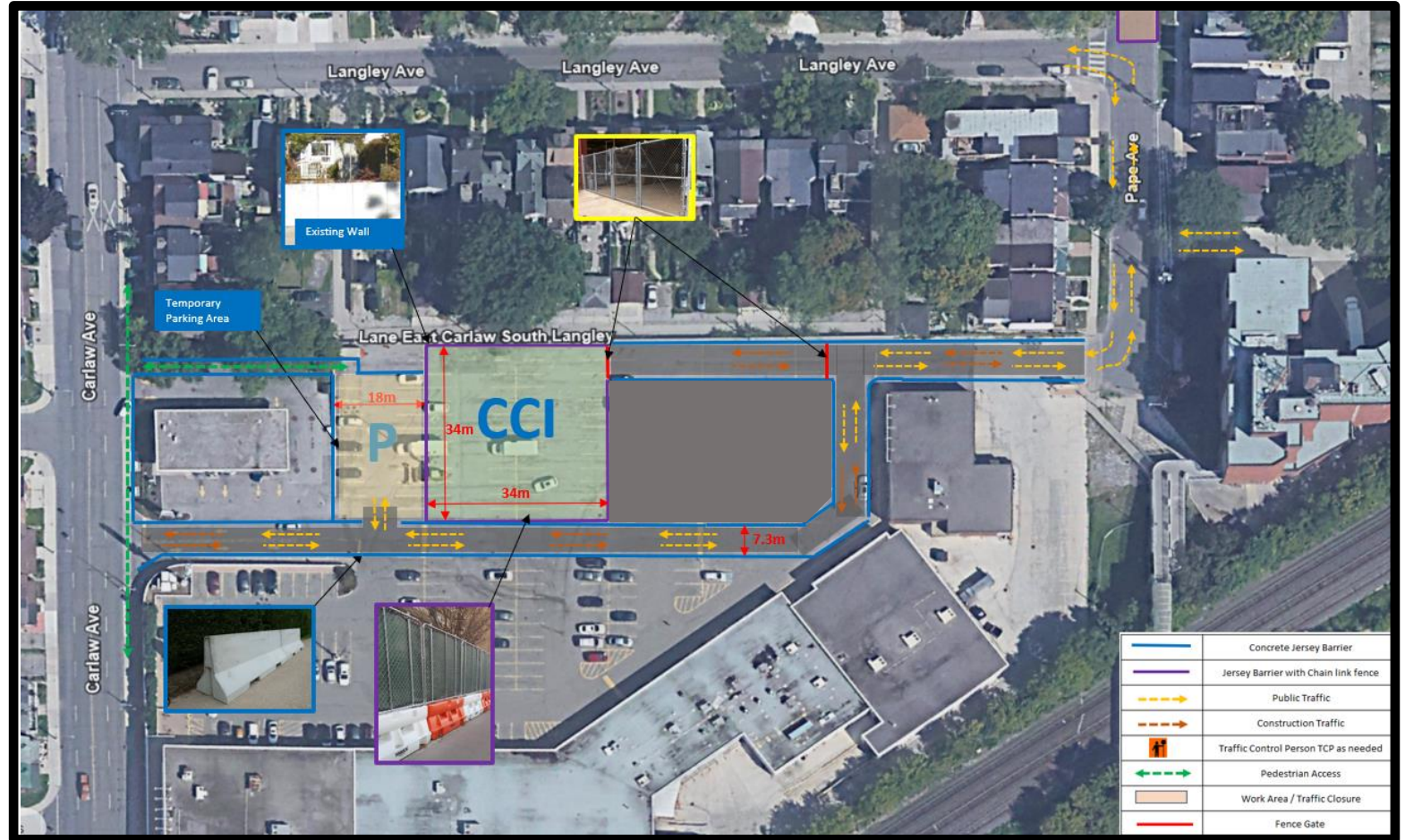
- Phase 2B will be an adjustment to phase 2A to finalize the combined sewer installation, connect it, and continue watermain work. It will introduce an additional construction area within and north of the Pape and Riverdale intersection.
- Additional impacts in phase 2B:
  - Full closure to vehicles on the east side of Pape Avenue in the Pape-Riverdale intersection
    - Eastbound traffic approaching the intersection will divert north onto Pape, westbound traffic approaching the intersection will divert north/south through laneway or turn around.
    - Pape Avenue to be converted to one-way northbound between Riverdale and Withrow
  - The northbound TTC stop on Pape north of Riverdale will be relocated slightly north to move it away from the construction zone.
  - The south crosswalk at Pape and Riverdale will reopen, and the north crosswalk will close.
- The work zone on Langley will alternate between the north and south side of the road. Pedestrian routes and traffic circulation will remain unchanged.



# 449 Carlaw Traffic Setup

# 449 Carlaw Plaza – Phase 1

- Since early this summer, the traffic configuration depicted to the right has been implemented in the 449 Carlaw Avenue plaza.
- This setup was implemented to maintain traffic flow during Toronto Hydro works and provide a small amount of informal replacement parking for those whose regular street spots were impacted by the work.



## 449 Carlaw Plaza – Phase 2



- With the commencement of sewer replacement work, a greater number of street parking spots will be removed.
- During this phase, Metrolinx will provide an expanded parking area for approximately 40 cars on the site of the former Mobil gas station in the 449 Carlaw Plaza.
- Details for how parking will be administered will be shared with the public at a later date.
- As with the previous stage, Clearway will be using a separate section of the lot for material storage and worker parking. Physical separations will be put in place to reduce interface between the permit parking lot and associated pedestrian walkways and the Clearway areas.
- Flagpersons will be on site during work hours to direct pedestrians and vehicles and ensure safety.

# **Additional Property Acquisitions**

## **Additional Property Acquisitions – 385-433 Pape Avenue**

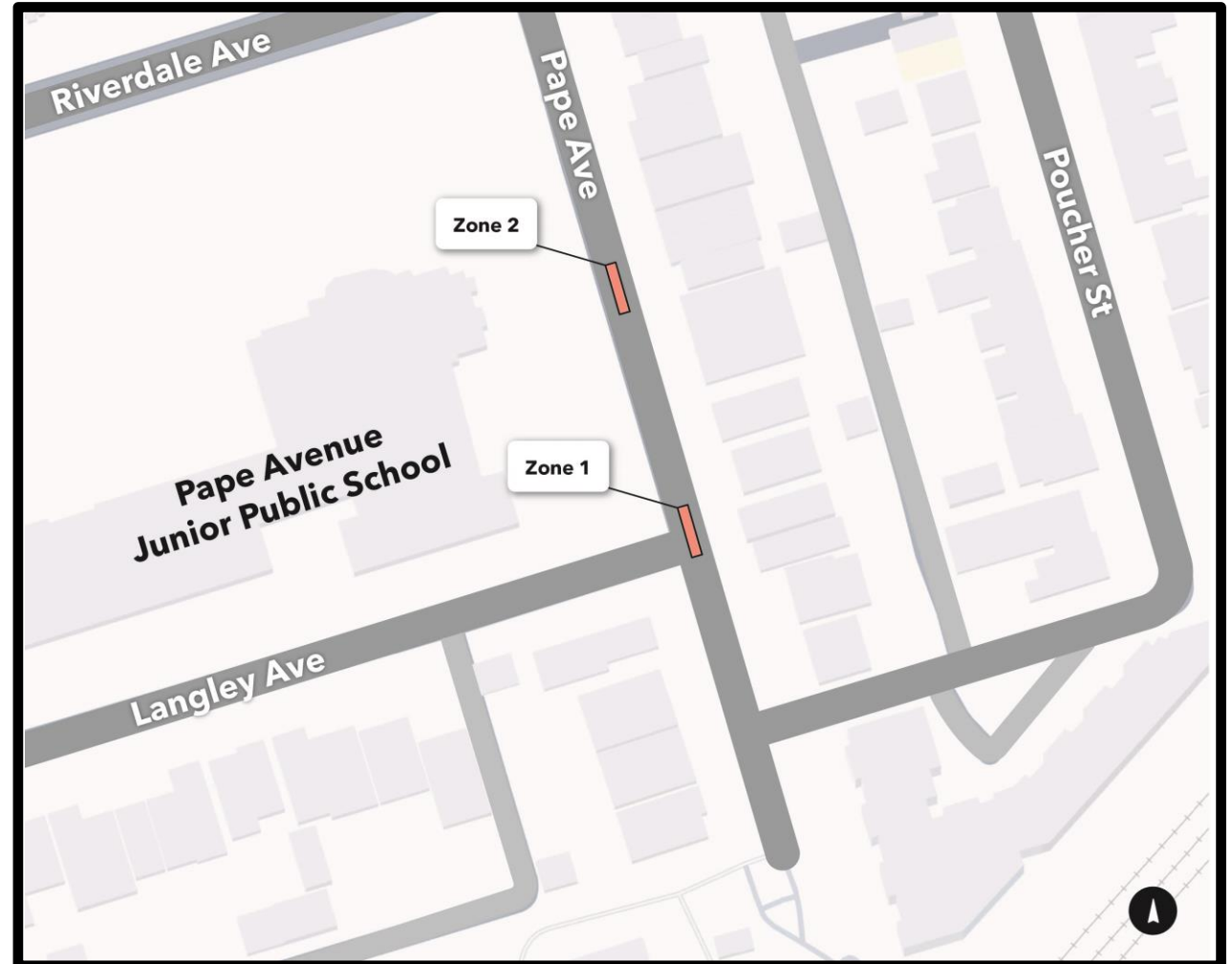
- On August 14, a meeting was held with property owners and tenants of houses on the east side of Pape Avenue south of Riverdale Avenue. 25 properties were invited to attend.
- During this meeting, owners and tenant were informed that Metrolinx will be acquiring their properties, as they may be at risk of some damage during Ontario Line tunnelling. This is being done out of an abundance of caution and to ensure the absolute safety of the neighbourhood and its residents.
- We are working directly with every single property owner and tenant to reach amicable agreements. Relocation specialists are working with tenants to find suitable relocation options on a like-for-like basis.
- Once the TBM has passed through this area, proper engineering assessments will be conducted at each home to assess any damage and make necessary repairs. We are looking at all potential options and will be discussing them individually with homeowners throughout the process.



# Environmental Updates

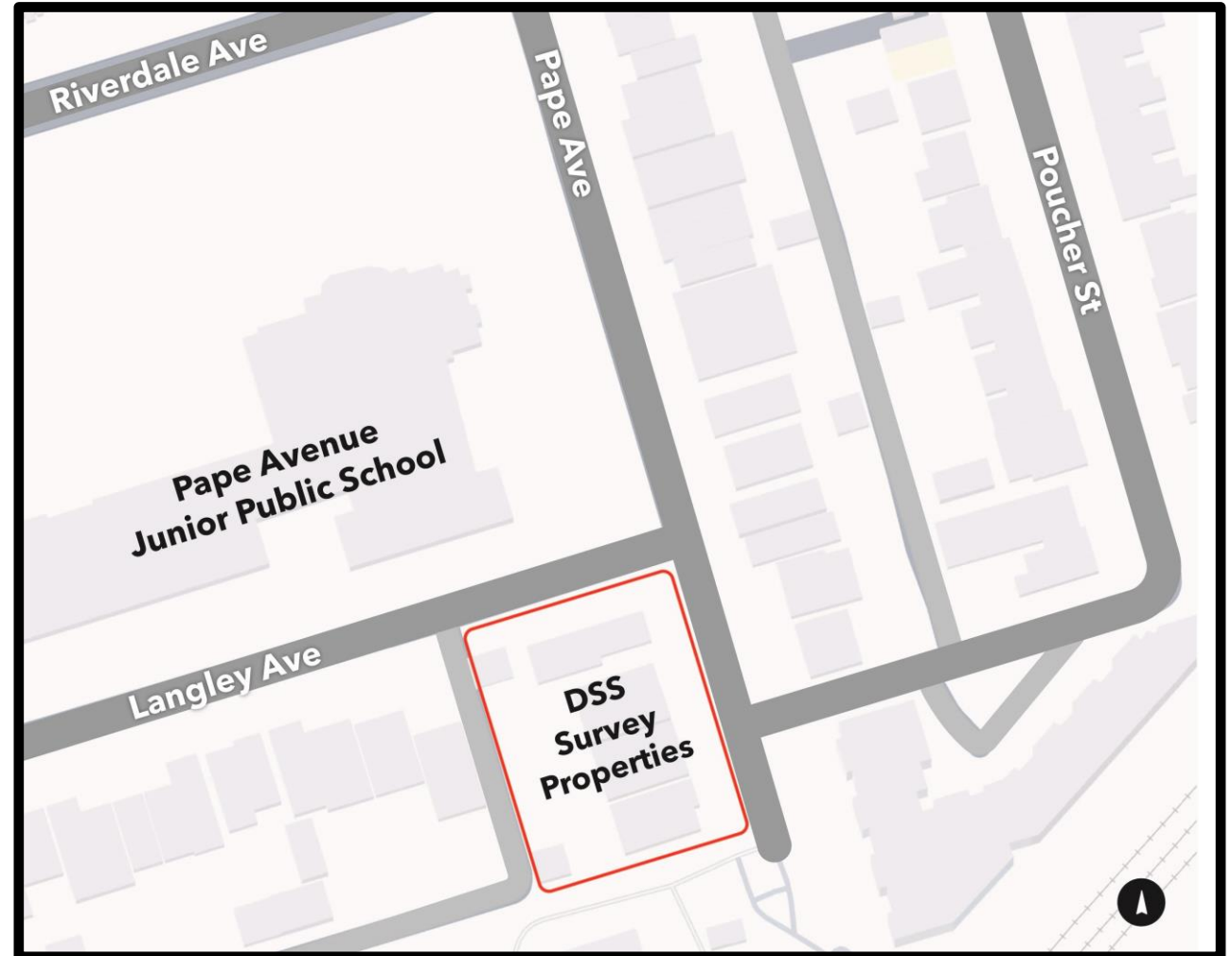
# Soil Testing Update

- Two additional soil samples from the Toronto Hydro utility trench excavation on Pape Avenue (show as Zone 1 and 2 on the map) were collected at depths of 0.3 to 0.9 metres and tested for benzo(a)pyrene (B(a)P).
- B(a)P in the soil was below Ministry of Environment, Conservation and Parks (MECP) applicable standards in both samples.
- Metrolinx plans to test additional soil from the Toronto Hydro utility trench excavation on Pape Avenue.
- Metrolinx is managing benzo(a)pyrene in soil by:
  - Limiting exposure to soil using dust control measures and best management practices during construction;
  - Conducting air monitoring during excavation work and investigating action level exceedances for PM2.5 and PM10;
  - Ambient air testing for benzo(a)pyrene.



# Designated Substance Survey Update

- The Designated Substance Survey (DSS) identifies hazardous materials, including asbestos, lead, mercury and silica within a building.
- The results of a DSS ensure that proper safety measures are in place to protect workers and occupants from exposure, particularly during construction, renovation, or demolition activities.
- The survey is scheduled to be conducted at properties located at 388-402 Pape Ave in the fall of 2024.
- Hazardous materials will be carefully removed prior to building demolition. Abatement of hazardous materials is regulated by the Occupational Health and Safety Act.



# Action Items

#	Questions Asked / Action Item	Response/Resolution	Due Date / Status
1	<p>Concerns were raised related to the averages of noise mitigation.</p> <p>Questions were also asked related to discrepancies between the TDSB report and the Metrolinx report.</p>	<ul style="list-style-type: none"> <li>• For saw-cutting, the noise wall was effective in maintaining noise levels at or below acceptable levels. The classroom performance has been effective and safe.</li> <li>• The consultant report discrepancies were discussed during the CLC and explained.</li> <li>• Further discussion with interested CLC members can be arranged.</li> <li>• <b>Action item:</b> Meeting to further discuss noise monitoring and impact levels can be arranged with interested CLC members.</li> </ul>	<p>May 2024 In progress</p>
2	<p>Production of a “look ahead” document to be released on a regular basis to CLC members.</p>	<ul style="list-style-type: none"> <li>• Metrolinx has met with Cara for ideas on what the “look ahead” document should contain.</li> <li>• First “look ahead” has been produced and will be provided to the CLC members on a bi-weekly basis.</li> </ul>	<p>August 2024 Ongoing</p>
3	<p>Metrolinx to create a repository of noise reports and share the last 6 months of the reports.</p>	<ul style="list-style-type: none"> <li>• The last 6 months of the reports have been shared through a series of emails.</li> <li>• Future reports will be emailed on a bi-weekly basis.</li> </ul>	<p>August 2024 Ongoing</p>

#	Questions Asked / Action Item	Response/Resolution	Due Date / Status
4	Request for the environmental testing reports to be shared related to the demolition of buildings on the west side of Pape Ave.	<ul style="list-style-type: none"> <li>The buildings have not yet been demolished.</li> <li>Metrolinx has shared details of how environmental testing occurs, when it occurs, and the environmental protection measures that Metrolinx takes on site.</li> </ul>	
5	Question around dust mitigation from 449 Carlaw Ave demolition	<ul style="list-style-type: none"> <li>Details of the environmental protection measures used at the 449 Carlaw site will be part of the discussion when Pape North Connect (PTUS contactor) is fully on board and PNC will be invited to the September CLC.</li> </ul>	
6	Questions around soil conditions related to the Pape Tunnel & Underground Stations work (at 449 Carlaw Ave)		



# Discussion

