

Ontario Line

Corktown/Don Yard Construction Liaison Committee

October 24, 2024



Agenda

Welcome

- Introductions
- Land Acknowledgement
- Safety moment

Presentation

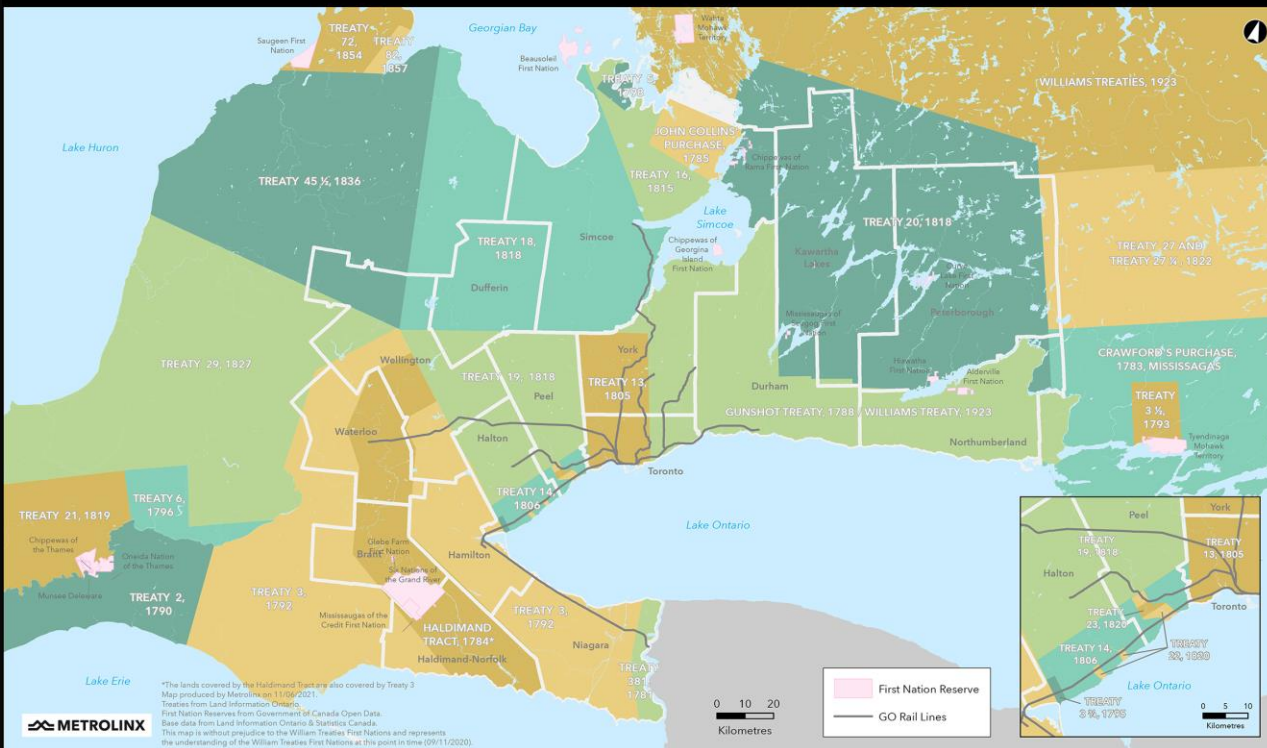
- Review of Action Items
- Don Yard Works
 - Construction Updates
- Corktown Station
 - Construction Updates
- Community Engagement
- We Are Here For You

Q/A and Discussion



LAND ACKNOWLEDGEMENT

Treaties and Reserves in the Greater Golden Horseshoe



Let us take a moment to acknowledge we are on lands that have been, and continue to be, home to many Indigenous Peoples including the Anishnabeg, the Haudenosaunee and the Huron-Wendat peoples.

We are all Treaty people. Many of us have come here as settlers, as immigrants or involuntarily as part of the trans-Atlantic slave trade, in this generation, or generations past.

We acknowledge the historic and continued impacts of colonization and the need to work towards meaningful reconciliation with the original caretakers of this land.

We acknowledge that Metrolinx operates on territories and lands covered by many treaties that affirm and value the rights of Indigenous communities, Nations and Peoples.

We understand the importance of working towards reconciliation with the original caretakers of this land. At Metrolinx, we will conduct business in a manner that is built on a foundation of trust, respect and collaboration.

Safety Moment - Autumn Awareness: Safety Tips for the Fall Season

- **Watch for Wet Leaves:**
Slippery surfaces can form with fallen leaves, especially after rain. Walk and drive carefully in leaf-covered areas.
- **Check Outdoor Lighting:**
Ensure walkways and entrances are well-lit as daylight hours shorten to prevent accidents.
- **Wear Appropriate Footwear:**
Choose shoes with good traction to navigate slippery sidewalks and driveways as temperatures drop.
- **Prepare for Colder Weather:**
Dress in layers for unpredictable fall temperatures to stay warm and comfortable.
- **Stay Safe with Yard Work:**
Use proper equipment when raking leaves and practice ladder safety on stable surfaces to avoid injuries.
- **Be Aware of Road Conditions:**
Wet roads and early morning frost can be hazardous. Slow down and maintain a safe distance while driving.



JULY - AUGUST CLC ACTION ITEMS - COMPLETED

#	ACTION ITEM	RESPONSE	STATUS
1	OTG to provide report on findings from artwork survey and detail implementation plan at the September CLC	OTG will provide an update during today's CLC.	Completed

JULY - AUGUST CLC ACTION ITEMS - PENDING

#	ACTION ITEM	RESPONSE	STATUS
1	Metrolinx to provide updates from the East Harbour team on the bridge and multiuse path at a future CLC.	A member of the East Harbour team will attend a future CLC meeting to provide updates. Timing is TBD.	In progress
2	Metrolinx to escalate weeds/boulevard maintenance issue to the City of Toronto	OTG will have the area cleaned up by next week.	In progress

JULY - AUGUST CLC ACTION ITEMS - PENDING

#	ACTION ITEM	RESPONSE	STATUS
3	Metrolinx to provide update on station naming process.	Metrolinx confirmed there will be a formal feedback process so community members can give their opinions on the station name they prefer. This process is expected to kick-off in the Fall 2024. In the meantime, community members can submit their preferred names to ontarioline@metrolinx.com	In progress
4	Metrolinx to look at incorporating certain best practices from LSE JC CLC's including action items and noise and vibration exceedances	Metrolinx is now tracking both completed and pending action items for all CLCs. A standard approach across all South Civil stations is currently in development to share noise and vibration exceedances.	N&V reporting pending

Don Yard Construction Update



Upcoming Work

Hours of work:

- Work is currently taking place from 7 a.m. to 11 p.m. Monday to Friday and Saturday during the day.
- Hours of work may vary based on work activity and progress.
- Updates to the current schedule will be shared with the community in advance.

October

- Drilling piles to support the future Ontario Line tunnel
- Building the west bridge abutment
- Constructing the foundation for the new hydro-one transmission tower
- Continue relocating utilities



Drilling piles to support the future tunnel

November - December

- Continue drilling piles and tiebacks for tunnel construction
- Complete utility relocation work
- Complete west bridge abutment work
- Install the new hydro-one transmission tower
- Start installing the north temporary bridge trestle
- Start ground improvement works (jet grouting) to strengthen the soil at the bottom of the new tunnel

January to March 2025

- Complete pile drilling work for the tunnel
- Continue tunnel excavation and tieback installation
- Start prep work for moving overhead cables to new hydro tower
- Complete the tunnel headwall
- Complete the north trestle superstructure



Tieback drill to be used to support the future tunnel

Construction Mitigations: Noise and Dust

- Metrolinx and the Contractor are continuing to implement measures to minimize noise and dust.
- Since the last CLC, a wheel-washing station has been installed at the site exit to wash the tires and underside of construction vehicles before they leave the site.
- A noise and vibration monitor was also relocated to provide better information about what residents are hearing. Relocating this monitor will help improve noise mitigation strategies for the community.



Wheel-wash installation



Noise monitor on site



Ongoing water application

Progress Photos

Piling Work



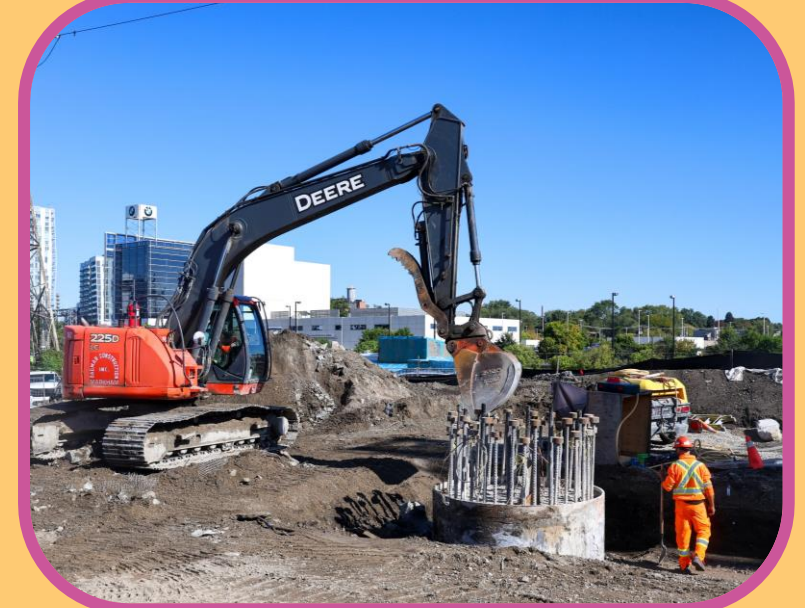
- Piling involves driving vertical columns into the ground to provide foundational support and stability for the tunnel structure during excavation and to prevent ground movement.

Concrete Pouring



- Concrete is poured down the pile liners to reinforce the tunnel walls, providing strength, sealing the excavation, and preventing water infiltration or soil collapse.

Caisson Progress



- Bridge caissons provide a dry, stable foundation below water or soft ground. These metal anchor bolts emerging from the caisson will be used as the stable footing between the foundation and the bridge.

Corktown Construction Update



Works in Progress – North site

- Support of excavation works
 - Struts and walers
 - Tie back
- *Excavation to commence early November.
Dates subject to change based on unforeseen circumstances
- Safety edge protection guardrail
- Access and rescue system (Davit arm)



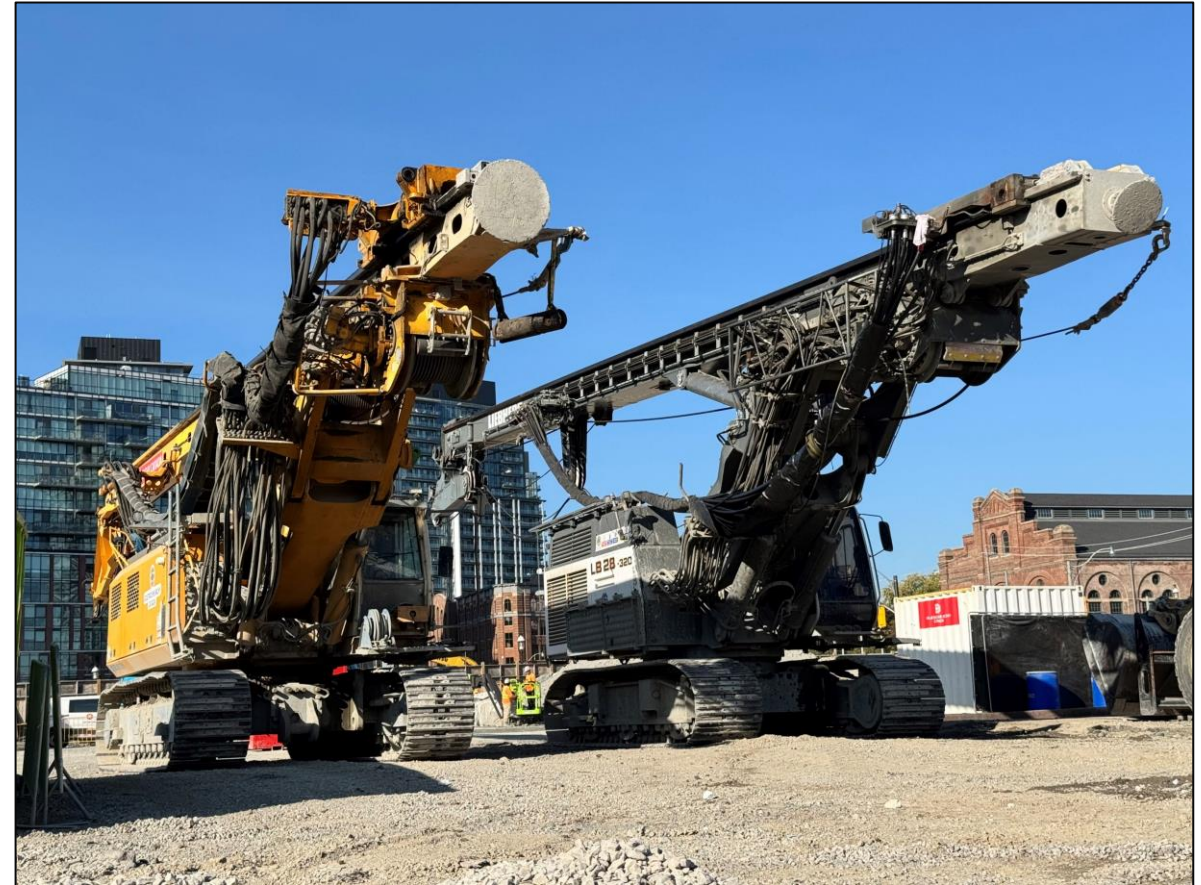
Example of davit arm rescue system

North Site - October 17, 2024



Works in Progress – South site

- **Piling works complete**
 - Piling rig demobilization
 - Safety edge protection guardrail
 - Access and rescue system (Davit arm)
- *Excavation to commence late October/ early November.
Dates subject to change based on unforeseen circumstances
- Installation ground monitoring devices
 - Site preparation (paving / grading / concrete slabs)



Drill rigs ready to be demobilized

EXCAVATION SCHEDULE

- Excavation works expected to begin at the **north and south sites late-October/early November 2024.**
- **Multiple phases** of excavation work will continue through late Winter 2025.

For excavation, work hours will vary based on the type of construction:

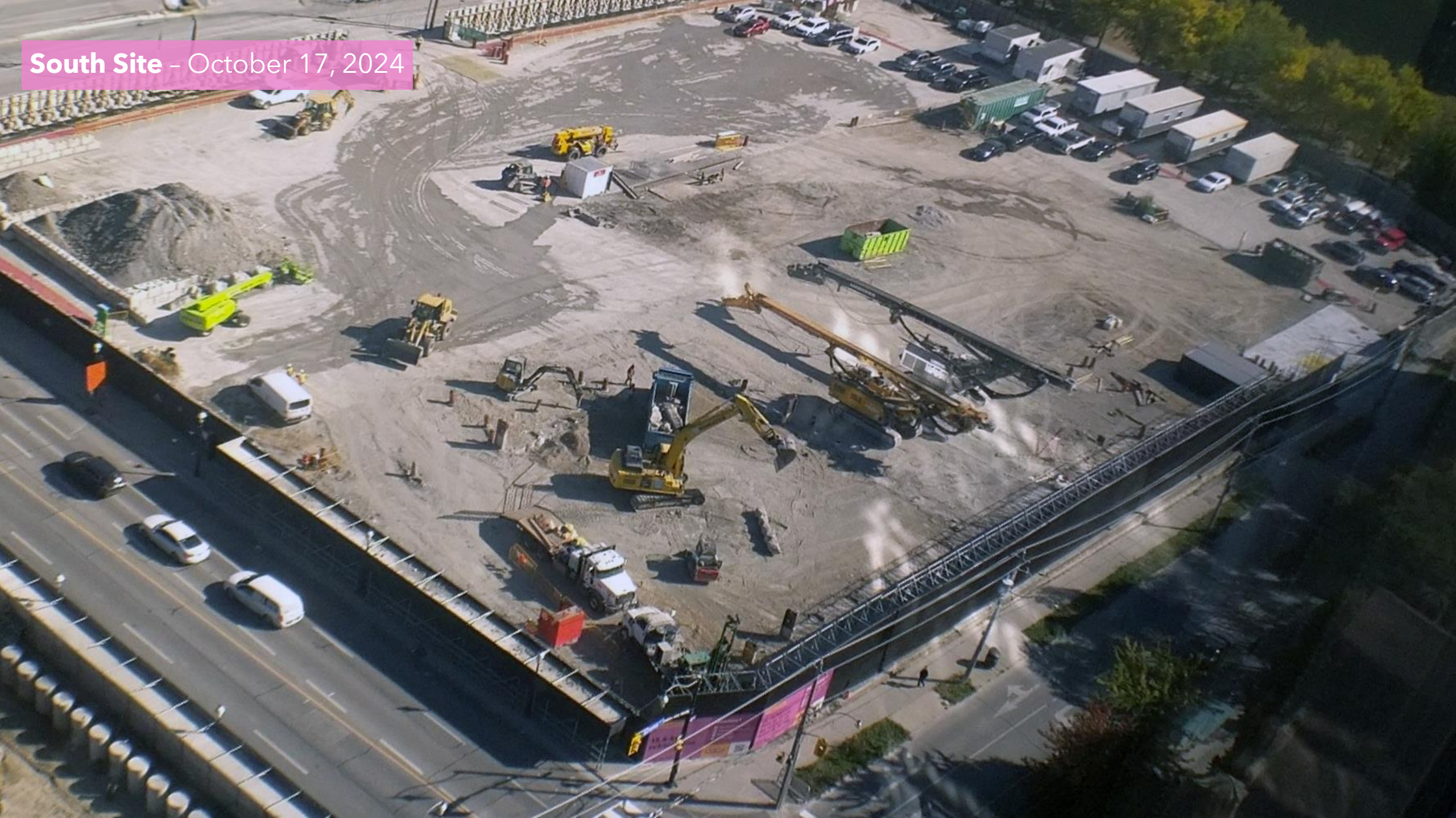
- The primary work hours for excavation taking place during the day between 7:00 a.m. and 7:00 p.m. (Monday - Friday).
- Additional shifts, including Saturdays, may be added as work requires. Work hours and timeframes are subject to change as the needs of construction change.

**Dates subject to change based on unforeseen circumstances*



Example of shaft excavation and walers and struts installation.

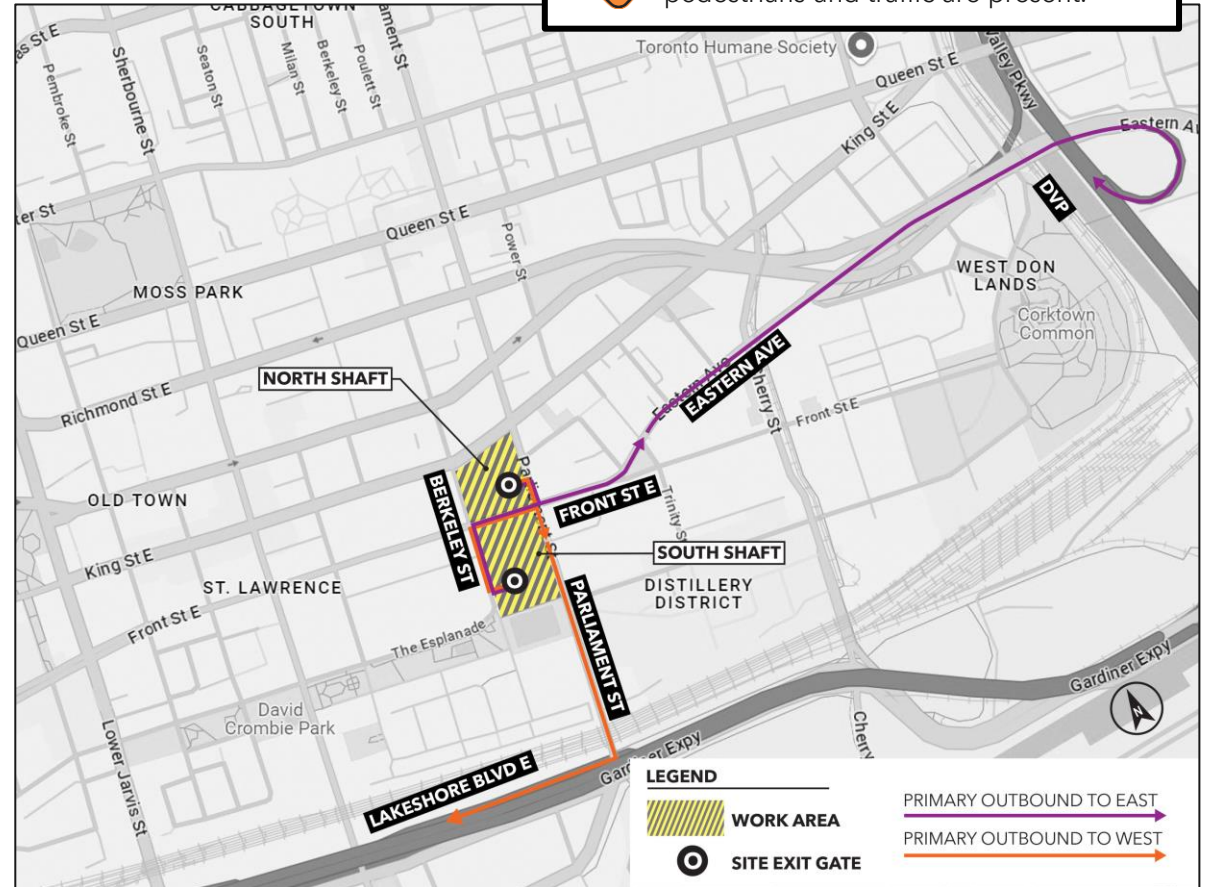
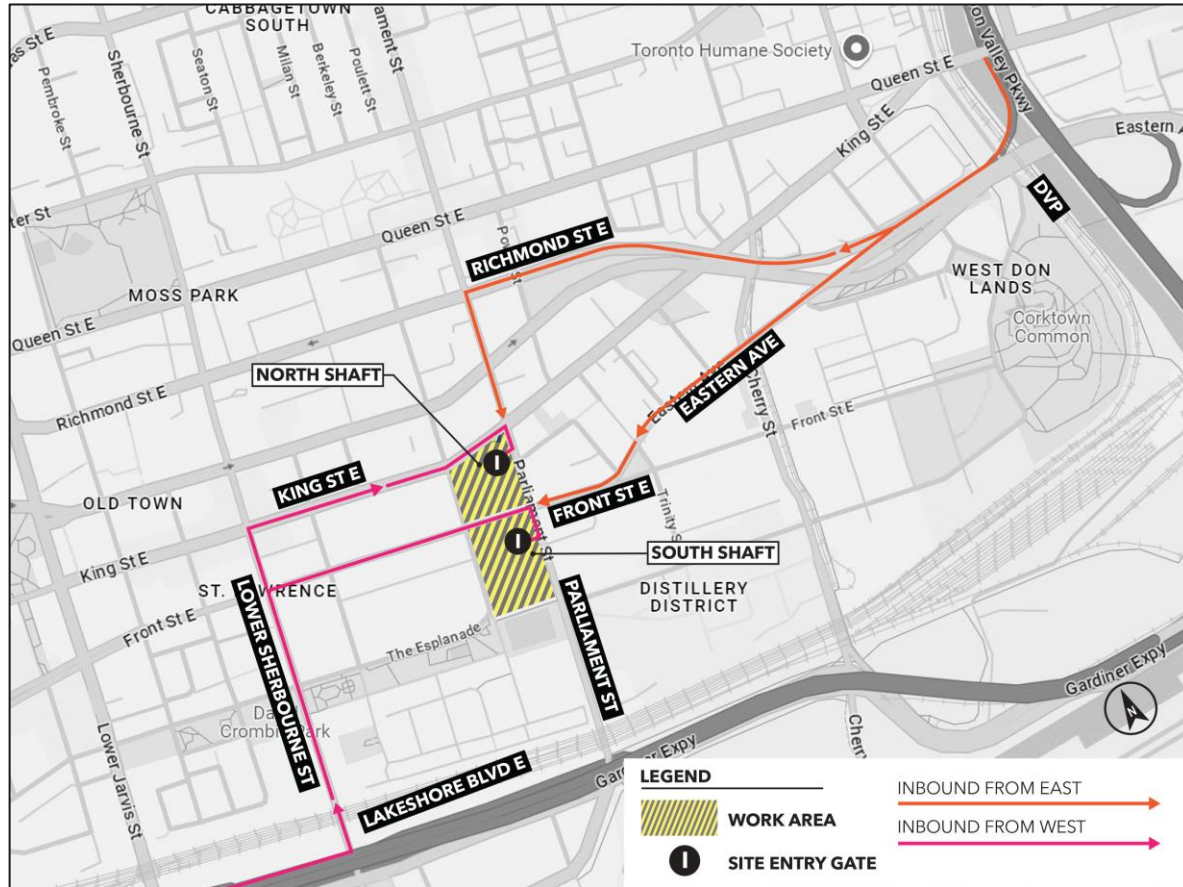
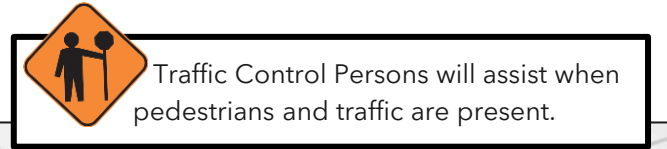
South Site - October 17, 2024



Current Haul Routes

Corktown Routes are developed in consultation with the City of Toronto.

These maps represent **primary routes** for vehicles entering and exiting the work site, currently in use.



Current Haul Routes

Exiting on Berkeley Street from the south site

- The future station construction footprint.
- Entrance and exit gates for truck movement best practices right-in forward movement, and right-out movements with traffic-controller assistance.
- City of Toronto Transportation services directive for trucks to avoid crossing two lanes of traffic to reach Parliament Street northbound lanes.

Impacts - Travelling northbound on Parliament Street

- For inbound movements, trucks attempting to make a left-turn via Parliament Street onto the site will need to wait for a gap in the oncoming southbound traffic in an unsignalized zone resulting in traffic build up in the northbound lanes.
- Left turns into the site conflict with existing TTC routes on Parliament Street resulting in operational transit challenges.

COMMUNITY SAFETY MEASURES

As the work continues to deliver the Ontario Line, **numerous safety protocols** for trucks have been implemented across the various work sites:

- Truck route reconsidered to make left turns through signalized intersection (Front Street / Eastern Ave from the north site).
- Traffic control flag persons are present (yielding stop / slow signs) at construction vehicle entry and exit points (gates) to give verbal and hand signal to the approaching truck drivers.
- Safety gates, to ensure safe movement of vehicles, pedestrians, cyclists and transit, when construction vehicles need to access the sites.
- Constant communication with other transit control persons using radio, coordinating vehicle movements.
- Speed limit signs (10km/hr) that are posted and displayed at gates.
- Ongoing briefing with delivery truck companies to follow OTG Site Safety Requirements when entering and exiting.
- More signs will be posted regarding speed limits and construction hazards for the public awareness.



CONTACT METROLINX AND STAY CONNECTED

Metrolinx will keep the community informed by providing Ontario Line updates and addressing questions and concerns effectively, and quickly.

Connect With Us:

-  Email: OntarioLine@metrolinx.com
-  Telephone 24/7: 416-202-5100
-  Ontario Line e-newsletter: [Metrolinx.com/OntarioLine](https://metrolinx.com/OntarioLine)

Follow us on social media:



Scan the QR code for Metrolinx e-newsletter subscription

