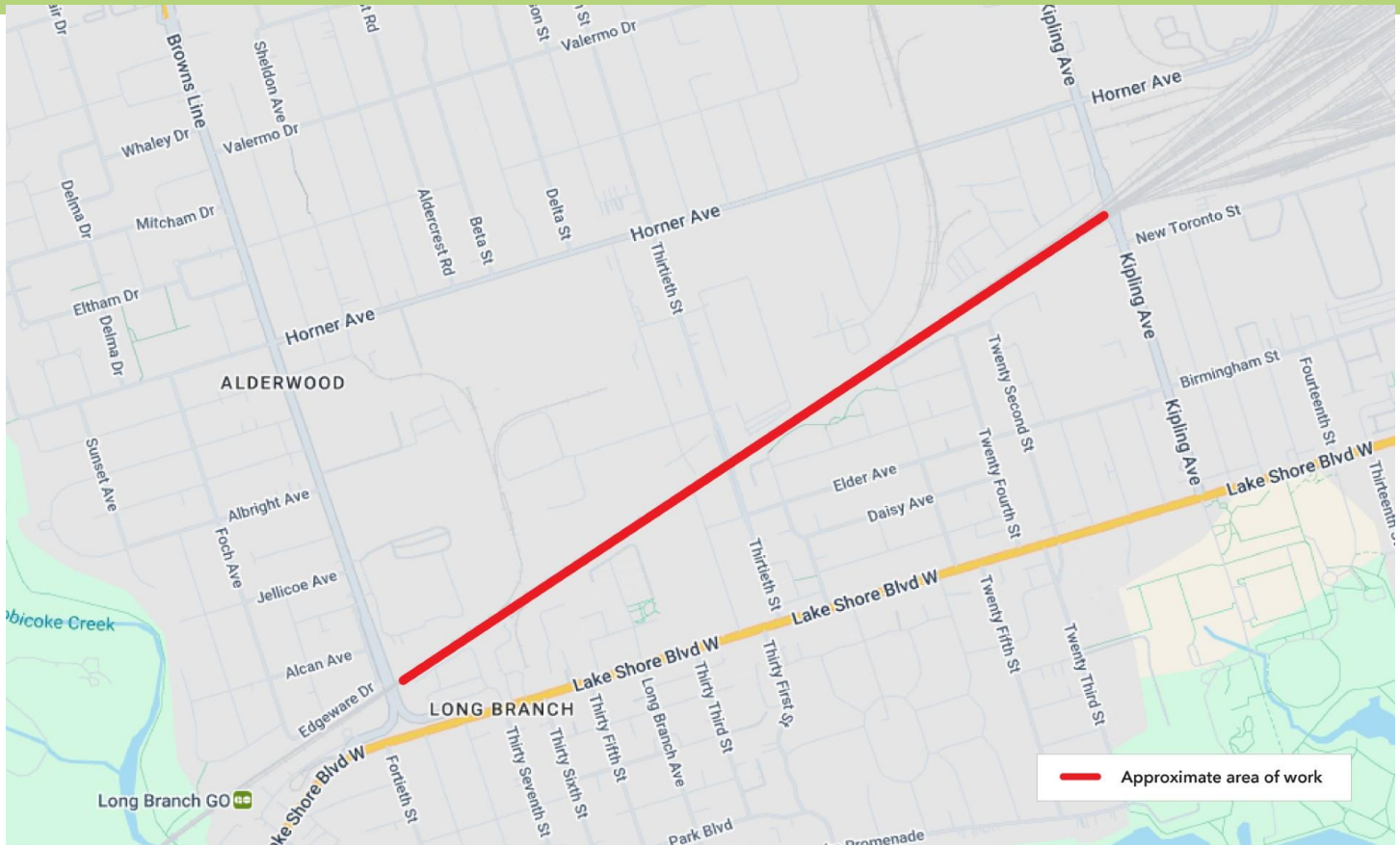


Geotechnical Investigative Work within the Lakeshore West Rail Corridor West of Mimico Hub

December 2nd to December 16



Map is for illustrative purposes only. Geotechnical investigations will proceed in stages, occupying one working area at a time.

Project Overview

GO service is expanding to serve you better - with more frequent service, more stations, cleaner technology, and more connections. Across the entire network, our goal is to deliver over 10,000 train trips a week - so you won't need a schedule because you know the next train will be coming soon. GO Expansion will transform the GO rail network from a commuter service into an all-day, rapid system.

What is happening?

As part of investigative work for the GO Expansion project, crews will be drilling vertical boreholes to assess ground conditions within the Lakeshore West rail corridor. This work will support future track and infrastructure updates. For safety reasons, this work may take place overnight when revenue trains are not in service.

Construction activity	Timescale	Working hours	Description of work
Geotechnical investigations: borehole drilling and soil sampling	Work begins December 2nd, 2024, for approximately 2 weeks.	Monday-Sunday: 8pm-5am	A drill rig is used to perform investigative works by rotating and pushing a drill head into the ground to a desired depth and to retrieve soil samples for analysis. Underground utilities must be identified prior to borehole drilling and a vac-truck may be used.

HOURS OF WORK

- Drilling is expected to take place Monday - Sunday beginning December 2nd, 2024.
- Work is expected between 8:00pm and 5:00am p.m. and will move within the area highlighted on the map for approximately 2 weeks.

WHAT TO EXPECT

- Residents can expect some noise, vibration, dust, and site lighting near the rail corridor.
- Staff will take reasonable precautions to minimize disturbances to residents and commuters, including but not limited to the following:
 - Reduced idling of non-essential equipment.
 - Pointing lights away from residential windows.
 - The work area will be safely secured.
 - White noise back up alarms on vehicles and machinery as required.
 - Noise and vibration monitoring and mitigation measures will be applied as required.
- Work will take place within the rail corridor.
- Drilling is sequenced and moves throughout the rail corridor as work progresses.
- In some areas, crews may be required to clear a path to move the drill rig, which could involve removal of low-lying vegetation.

- Work may be rescheduled due to inclement weather or unforeseen circumstances.
- Work may take place during daytime or overnight hours.
- We apologize for any inconvenience and ask for your patience as we complete this critical work.

PEDESTRIAN, TRAFFIC AND TRANSIT DETAILS

- There are no anticipated impacts to pedestrians, motorists or public transit.
- Please continue to exercise caution around active construction sites.

COMMUNITY ENGAGEMENT

- Metrolinx has a dedicated community engagement team in place that works with residents and businesses in the area.
- If you have any questions, please contact us using the information provided below.



Scan the QR code to subscribe to the newsletter.

This notice can be translated into a different language upon request by emailing us at TorontoWest@metrolinx.com

Cet avis est disponible en français sur demande. Si vous êtes intéressé, veuillez envoyer un courriel à TorontoWest@metrolinx.com

Contact Us:

- ✉ Write to us at: TorontoWest@metrolinx.com
- 🐦 Find us on Twitter [@GOExpansion](https://twitter.com/GOExpansion)
- Visit the website: www.metrolinx.com/projects-and-programs/go-expansion
- Subscribe to our e-blast: www.metrolinx.com/subscribe

