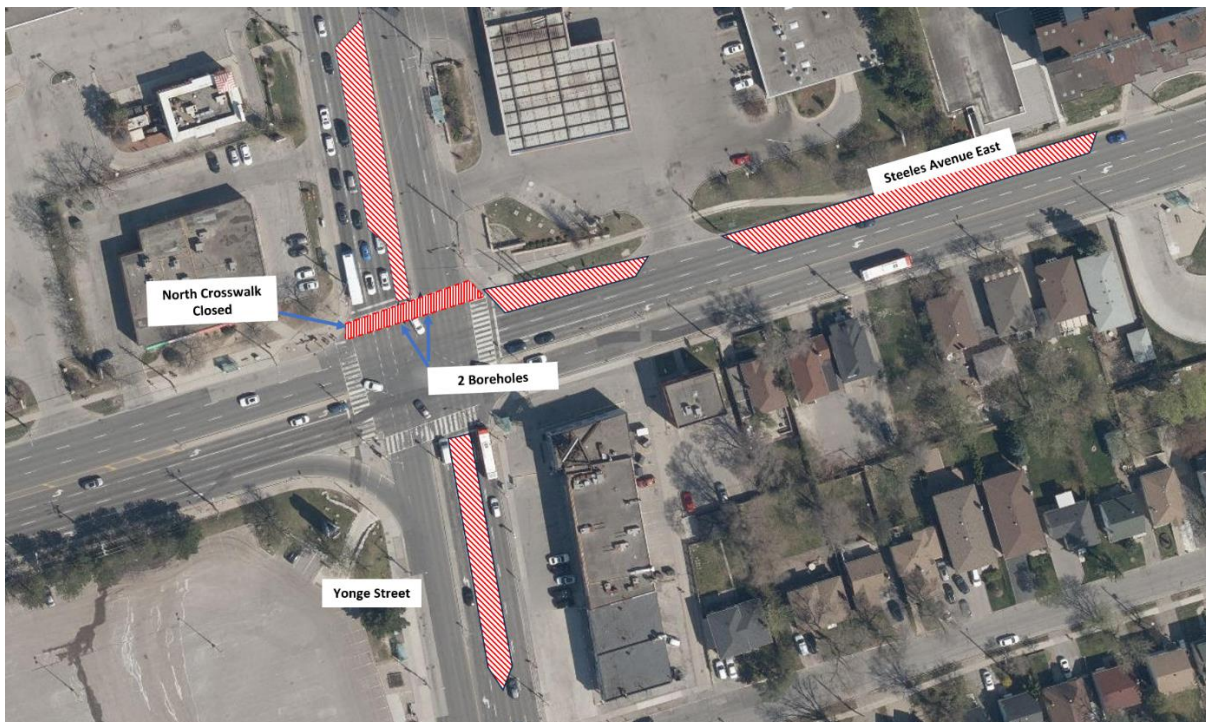


# Investigation Work at Yonge St. & Steeles Ave. E. (Updated Schedule & Work Hours)

Schedule: November 25<sup>th</sup> - December 4<sup>th</sup>, 2024

Hours: 9:00pm - 6:00am



*Figure 1: The approximate work zone and traffic controls for geotechnical investigation work. Map is not to scale and for illustrative purposes only.*

## What is happening?

To support the Yonge North Subway Extension Project, tie-back obstruction investigative work will take place at the intersection of Yonge St. and Steeles Ave. E. The purpose of this work is to collect important information for the ongoing procurement of the tunnel contract for the Yonge North Subway Extension.

## About the Yonge North Subway Extension:

The Yonge North Subway Extension will transform the commute in York Region, Toronto and beyond by extending the TTC's Line 1 subway service north from Finch Station to Vaughan, Markham and Richmond Hill. This extension includes five confirmed subway stations along an extension of roughly eight kilometres.

Still have questions? Ask us! [YongeSubwayExt@metrolinx.com](mailto:YongeSubwayExt@metrolinx.com), or 416-202-7000.

- ✉ Visit us at: 295 High Tech Road Unit 4, Richmond Hill
- 📱 Find us on social media @YongeSubwayExt
- 🌐 Visit the website: [www.metrolinx.com/YongeSubwayExt](http://www.metrolinx.com/YongeSubwayExt)

Disponible en français sur demande. Si vous êtes intéressé, veuillez envoyer un courriel à [YongeSubwayExt@metrolinx.com](mailto:YongeSubwayExt@metrolinx.com).

### WORK DETAILS:

- Geotechnical investigation work requires the drilling of boreholes to identify and analyze obstructions in tie-back structures. Tie-backs are supports used to stabilize structures, such as retaining walls or slopes, by anchoring them to a more stable soil layer or rock.

### WHAT TO EXPECT:

- Crews will be drilling boreholes within the municipal right-of-way to gather data samples.
- Boreholes will be backfilled with bentonite after completion.
- Wastewater will be disposed of through on-site collection or through a vacuum truck.
- Residents near the site can expect to hear increased noise levels during this work. Noise and vibration levels will be monitored and mitigated when necessary.

### HOURS OF WORK:

- Work is scheduled to occur between November 25<sup>th</sup> and December 4<sup>th</sup>.
- Work will be conducted overnight to minimize traffic impacts on Yonge St. and Steeles Ave. E.
- Work will involve daily mobilization and demobilization, with the street being cleared each day.
- **Please note that work may be rescheduled due to weather conditions or unforeseen circumstances.**

### PEDESTRIAN IMPACTS:

- West-East crosswalk on the north-side of intersection will be closed.
- Pedestrians will be required to cross from the south-side of Yonge and Steeles Ave E.
- Work areas will be clearly marked or fenced off as required to ensure public safety.
- Pedestrians should exercise caution around borehole work zone(s).

### TRAFFIC IMPACTS:

- Two lanes will be closed on Yonge St. One lane will remain open to support traffic flow around borehole work zones.
- Traffic control signage will be installed on Yonge Street and Steeles Avenue East.

### TRANSIT IMPACTS:

- No impacts to TTC service on Yonge Street and Steeles Avenue East.

Still have questions? Ask us! [YongeSubwayExt@metrolinx.com](mailto:YongeSubwayExt@metrolinx.com), or 416-202-7000.

✉ Visit us at: **295 High Tech Road Unit 4, Richmond Hill**

Find us on social media @[YongeSubwayExt](#)

📄 Visit the website: [www.metrolinx.com/YongeSubwayExt](http://www.metrolinx.com/YongeSubwayExt)

Disponible en français sur demande. Si vous êtes intéressé, veuillez envoyer un courriel à [YongeSubwayExt@metrolinx.com](mailto:YongeSubwayExt@metrolinx.com).