

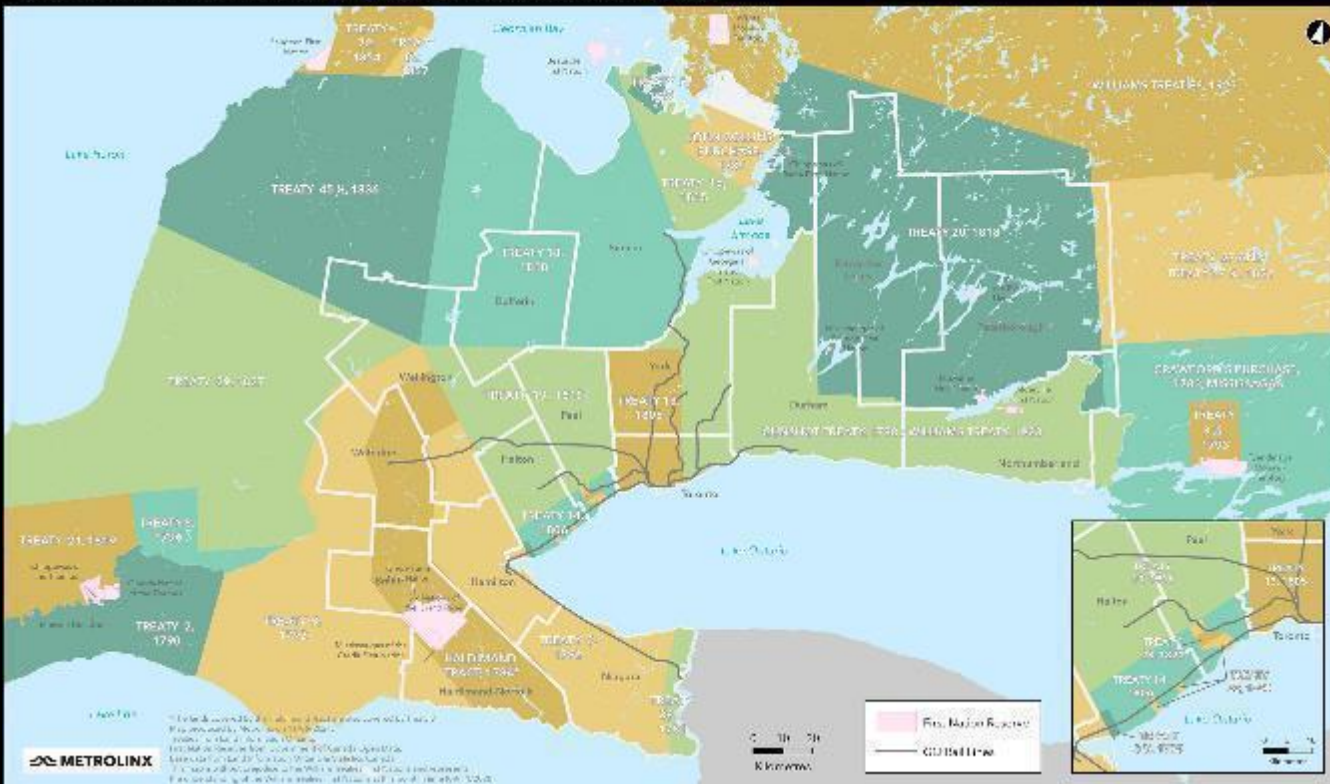


**The Ontario Line  
Lakeshore East Joint Corridor  
Early Works  
Construction Liaison Committee**

**November 21, 2024**

# LAND ACKNOWLEDGMENT

Treaties and Reserves in the Greater Golden Horseshoe



Let us take a moment to acknowledge we are on lands that have been, and continue to be, home to many Indigenous Peoples including the Anishinaabeg, the Haudenosaunee and the Huron-Wendat peoples.

We are all Treaty people. Many of us have come here as settlers, as immigrants or involuntarily as part of the trans-Atlantic slave trade, in this generation, or generations past.

We acknowledge the historic and continued impacts of colonization and the need to work towards meaningful reconciliation with the original caretakers of this land.

We acknowledge that Metrolinx operates on territories and lands covered by many treaties that affirm and value the rights of Indigenous communities, Nations and Peoples.

We understand the importance of working towards reconciliation with the original caretakers of this land. At Metrolinx, we will conduct business in a manner that is built on a foundation of trust, respect and collaboration.

# Agenda

## 1. Welcome

- Land Acknowledgement
- Safety Moment

## 2. Construction Updates

- Completed works
- Bridges update
- In-corridor work
- Lookahead - 2024
- Eastern Avenue bridge

## 3. Actions and Complaints

- Action Items
- Complaints and Issues Tracker

## 4. Noise and Vibration Update - October 2024

## 5. Discussion/Next CLC



New tracks awaiting installation

## Safety Moment - Watch for Signs

With construction moving to the north side of the corridor, it's important to pay attention to new wayfinding signage and temporary barriers that provide direction about where to go. Remember to:

- Pay attention to your surroundings
- Read the signage posted around the site
- Follow all directional signs and signals
- Obey the rules of the road



# **Ontario Line Construction Update Lakeshore East Joint Corridor Early Works Construction**

# Construction Progress Update: Completed Works

**Installed new tracks on south side of rail corridor and connected them to a track slew - approx. 1300m of new rail installed**



**Removed old tracks from the north side of corridor - approx. 800m of old tracks removed**



**Installed OCS pole bases for train electrification**



**Installed new girders at the Dundas Bridge**



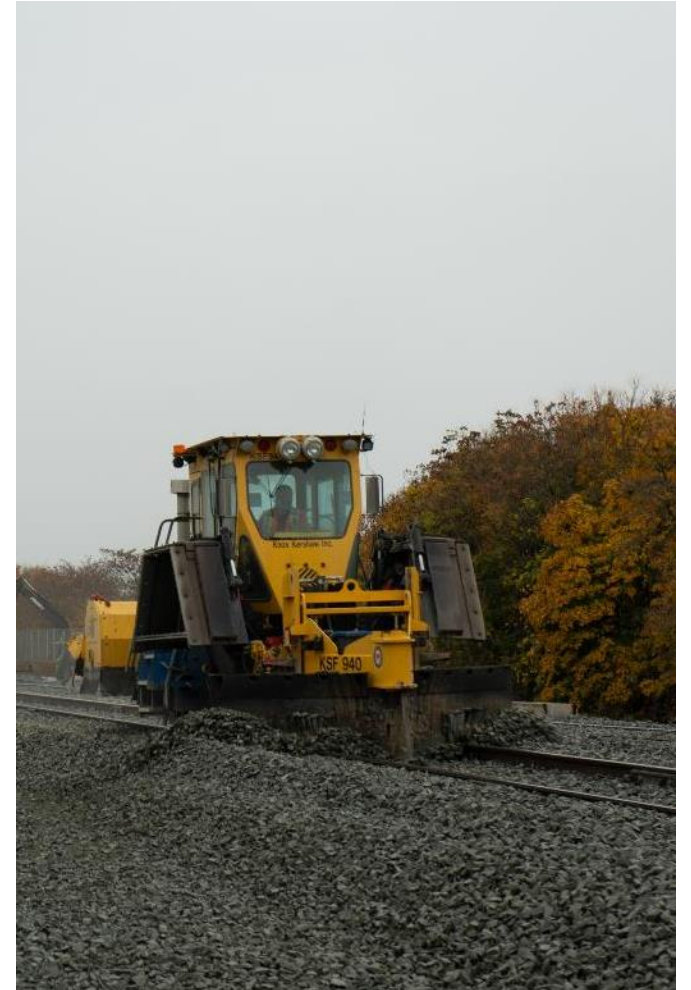
## Construction Progress Update: Track Shift - November 8 - 11, 2024



Workers welding tracks



New track being lifted into place



Ballast being redistributed around new tracks



**Bridge reconstruction:  
Queen St. E., Dundas St. E.,  
and Logan Ave.**



# Bridge Reconstruction

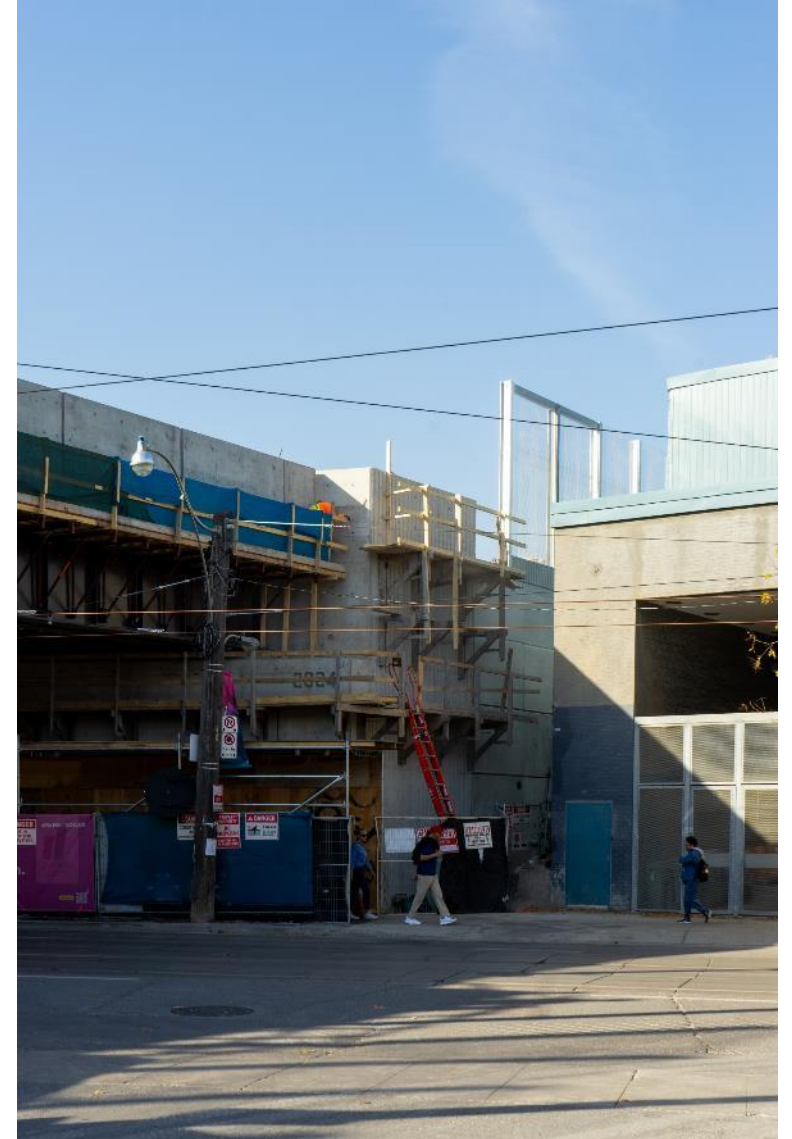
- Work is ongoing to rebuild the Queen, Dundas, and Logan rail bridges
- Construction activities include concrete pours, formwork, and rebar installation

## Timelines:

- **Queen bridge:** Work on the south side is completed, work on the north side of the bridge will start in April 2025
- **Dundas bridge:** Ongoing until early February 2025
- **Logan bridge:** Ongoing until early February 2025

## Hours of work:

- Monday - Friday, between 7 a.m. - 7 p.m., and occasionally on Saturday's between 7 a.m. - 5 p.m. and Sundays from 9 a.m. - 5 p.m.
- Overnight work may be required to complete critical activities that cannot be completed during the day. Advance notice will be provided for overnight work.



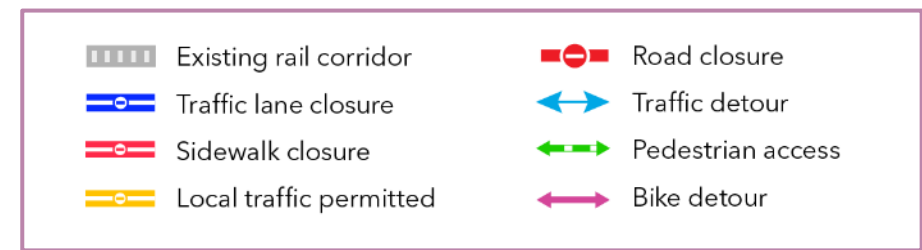
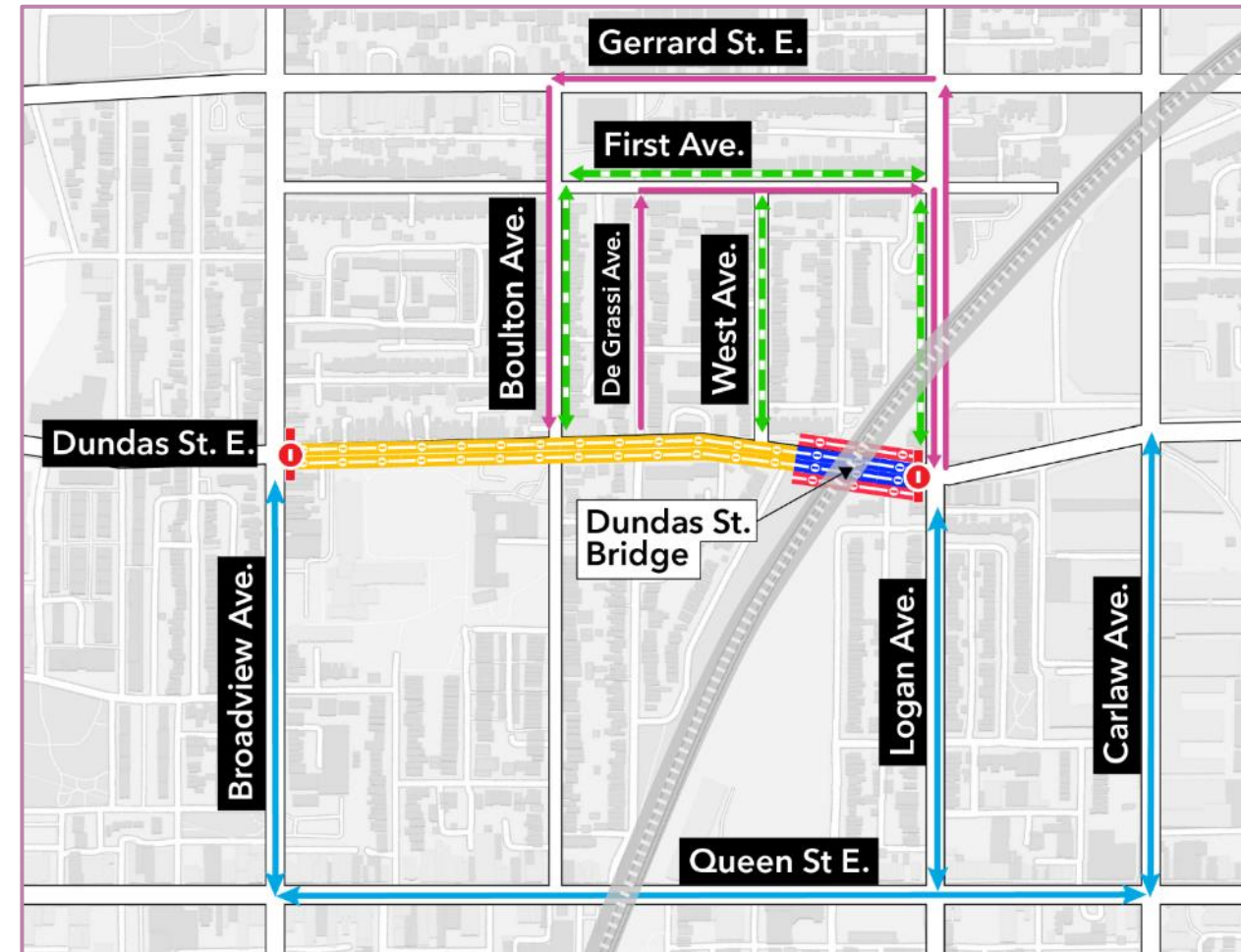
Final touches being put on the Queen Bridge

## Dundas Street East: Weekend road closures

- Once the abutments are complete, the new bridge girders will be lifted into place and installed.
- Dundas Street East will be closed over two weekends to complete the girder installation.
- The road will be closed between Broadview Ave. and Logan Ave. – access for local residents will be maintained.

### Hours of closure:

- **First weekend:** Completed
- **Second weekend:** Starting on Friday, December 6 at 8 p.m. until Monday, December 9, 2024, at 6 a.m.
- Work will take place on a 24-hour basis during the closure
- Mitigations measures will be in place to limit community disruption
- Dates are subject to change and pending City of Toronto permits and approvals

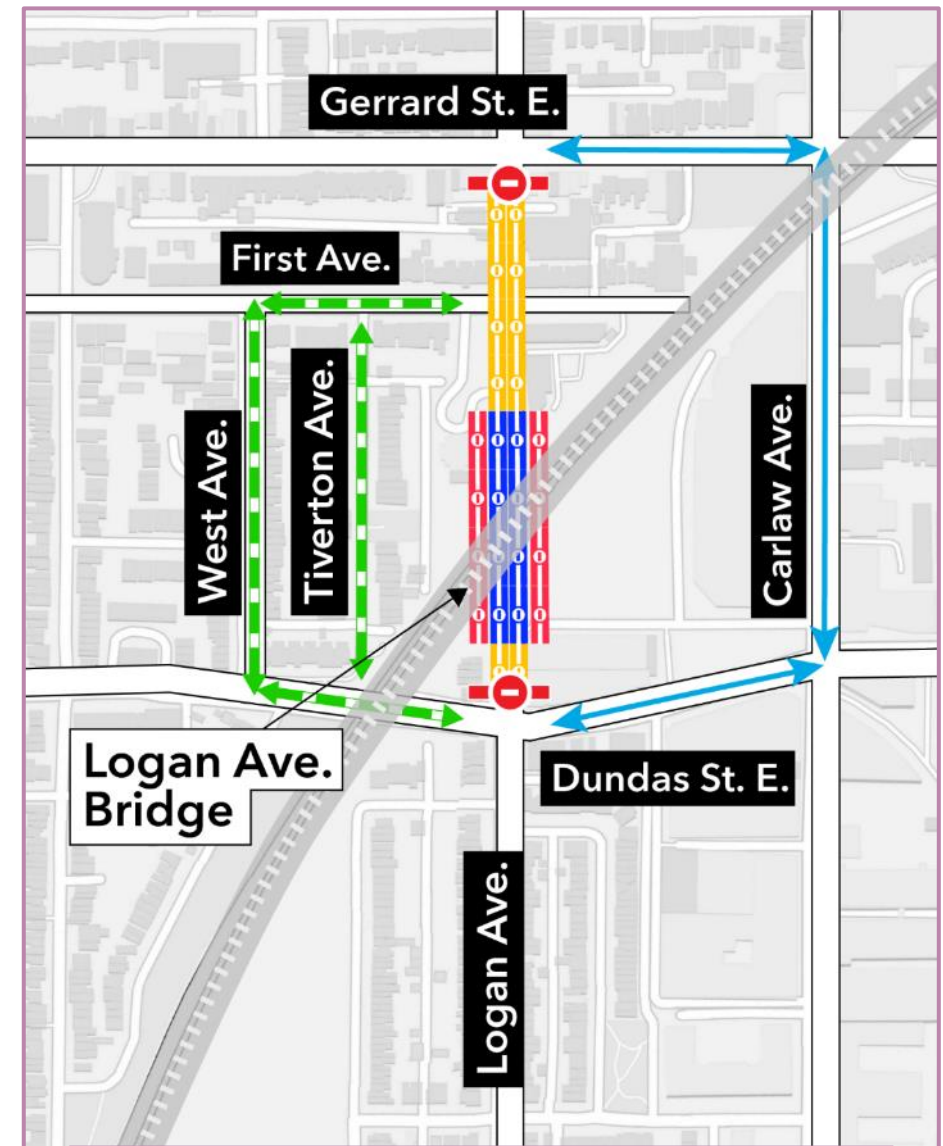


## Logan Avenue: Weekend road closure

- Once the abutments are complete, the new bridge girders will be lifted into place and installed.
- Logan Avenue will be closed over two weekends to complete the girder installation.
- The road will be closed between Dundas St. E. and Gerrard St. E. - access for local residents will be maintained.

### Hours of closure:

- **First weekend:** Starting on Friday, December 13 at 8 p.m. until Monday, December 16, 2024, at 6 a.m.
- **Second weekend:** Starting on Friday, December 20 at 8 p.m. until Monday, December 23, 2024, at 6 a.m.
- Work will take place on a 24-hour basis during the closure
- Mitigations measures will be in place to limit community disruption
- Dates are subject to change and pending City of Toronto permits and approvals



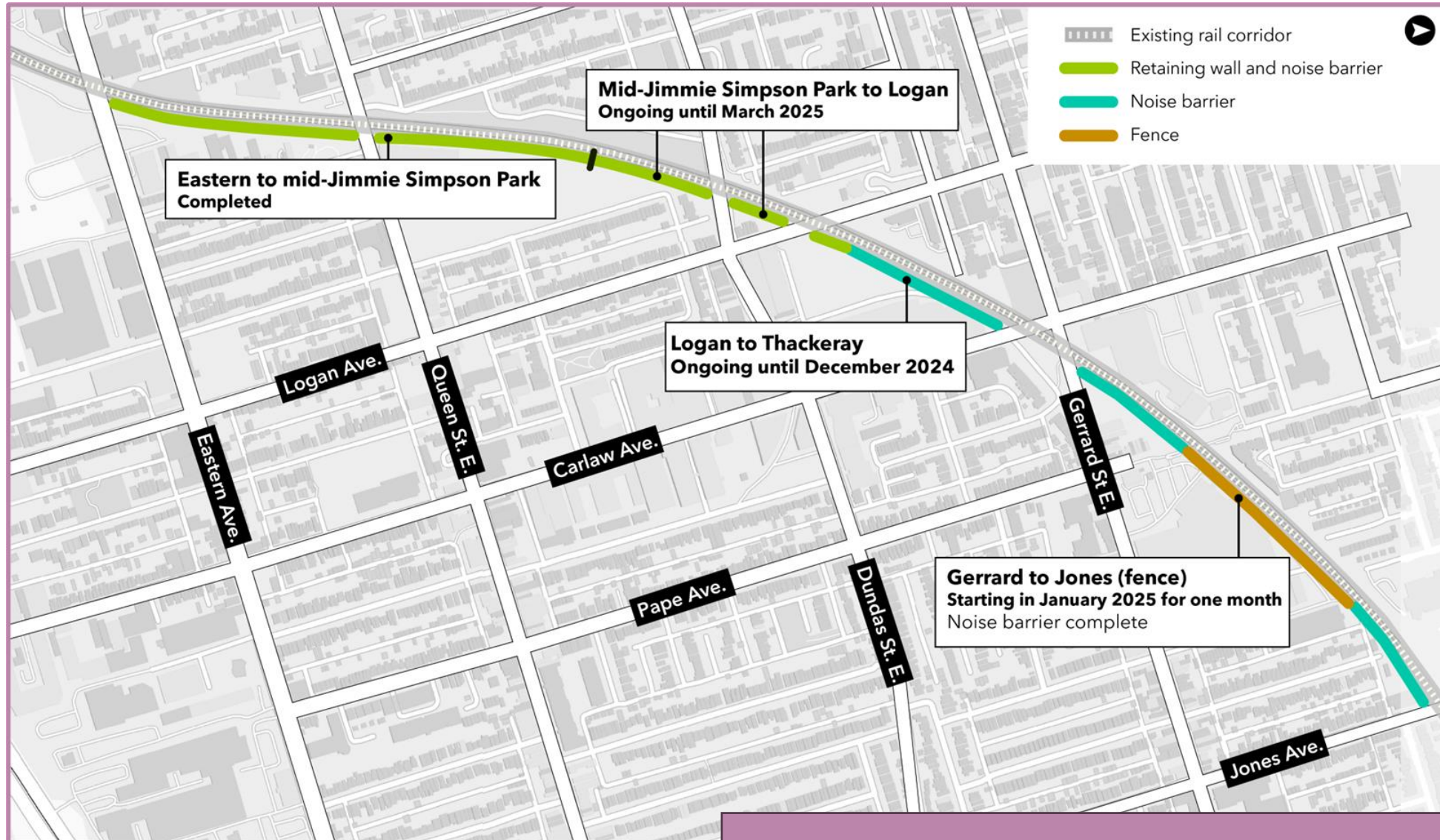


# Construction Update: In-Corridor Work

# In-Corridor Work Update

#	Activity	Description	Location	Date and times
1	<b>Track removals and maintenance</b>	Removing old tracks and welding track ties	Within the rail corridor between Eastern Ave. and Dundas St. E.	<ul style="list-style-type: none"> <li>Welding work ongoing for one week</li> <li>Track removals will resume in January 2025</li> <li><b>Overnight:</b> Monday - Friday between 8 p.m. - 5 a.m. and occasional weekend work</li> </ul>
2	<b>Tree removals, pruning, and clearing and grubbing on Metrolinx property</b>	Pruning and removing trees and vegetation inside the rail corridor	On the north side of the corridor between Eastern Ave. and Dundas St.	<ul style="list-style-type: none"> <li>Ongoing for one week</li> <li><b>Daytime:</b> Monday - Friday between 7 a.m. - 7 p.m.</li> </ul>
3	<b>Permanent fence installation</b>	Installation of high-security fence between the rail corridor and the public Right-Of-Way	On the south side of the rail corridor from Pape Ave. to Jones Ave.	<ul style="list-style-type: none"> <li>Starting early January 2025 for approx. one month</li> <li>Noise barrier at LCBO and 926 Gerrard St. E. (LCBO) have been completed</li> <li>The pathway at Galt Ave. will be reinstated in approx. mid-December 2024</li> <li><b>Daytime:</b> Monday - Friday from 7 a.m. to 7 p.m.</li> </ul>
4	<b>Retaining wall construction and noise barrier installation</b>	Installation of pre-cast concrete block retaining walls and acrylic noise panels	On the south side of the rail corridor at Booth Ave. and Paisley, and from Dundas St. to Carlaw Ave.	<ul style="list-style-type: none"> <li>Retaining wall and noise barrier installation ongoing on the south side of the corridor until March 2025</li> <li>Excavation work for the retaining walls on the north side of the corridor will begin in December 2024</li> <li><b>Daytime:</b> Monday - Friday from 7 a.m. to 7 p.m. and occasional Sunday work between 9 a.m. - 5 p.m.</li> </ul>
5	<b>Piling Work for Riverside-Leslieville Station</b>	Installation of piles to build the foundation of the future Riverside-Leslieville Station	On the north side of the rail corridor around the Queen bridge	<ul style="list-style-type: none"> <li>Starting Mid-December 2024 to late February 2025</li> <li><b>Daytime:</b> Monday - Friday from 7 a.m. to 7 p.m. and occasional weekend work between 9 a.m. - 5 p.m.</li> </ul>

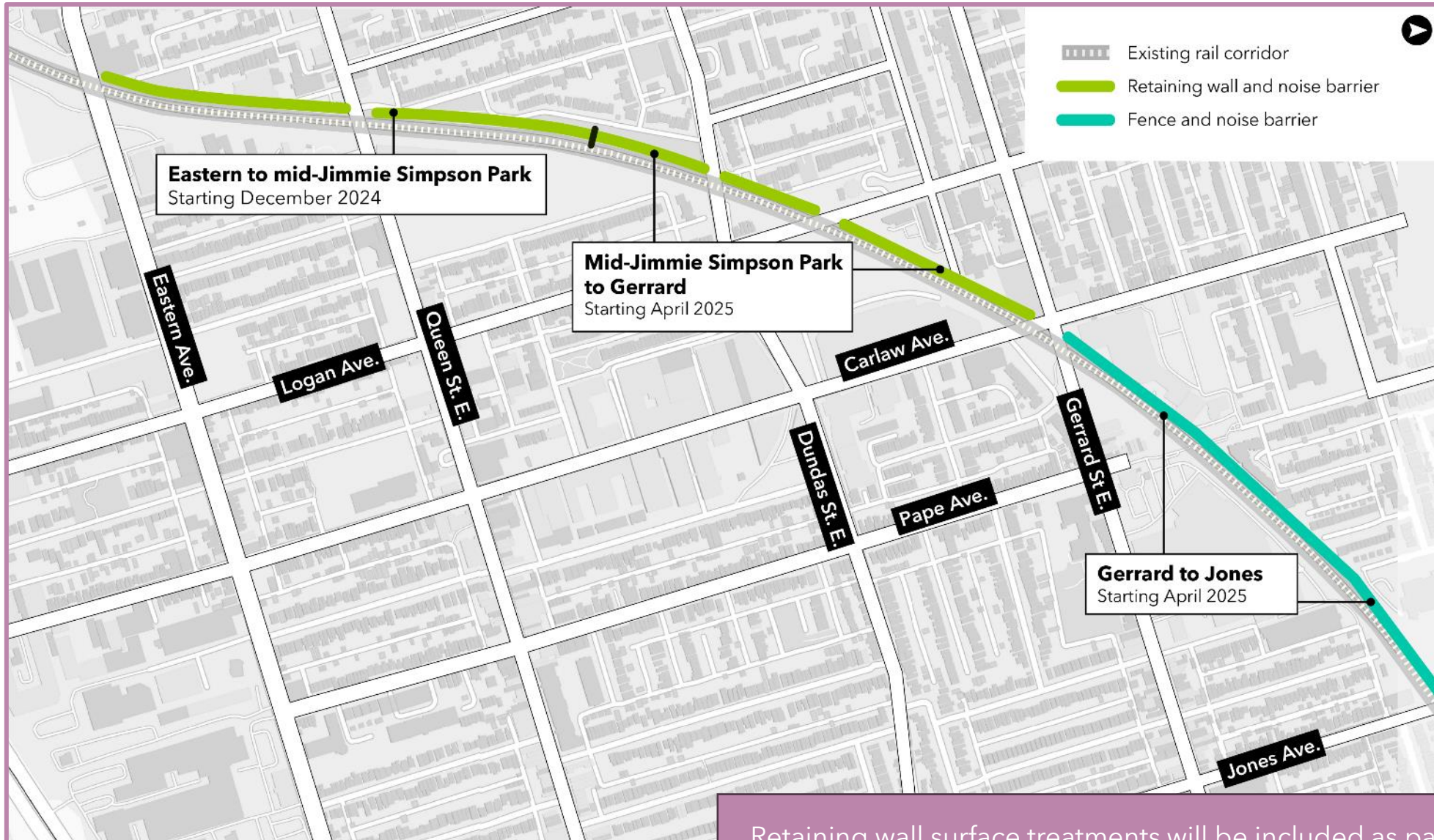
# Retaining Wall and Noise Barrier Construction Update



Retaining wall surface treatments will be included as part of this scope.

# Retaining Wall Construction Update - Upcoming Work

## North side of the rail corridor



Retaining wall surface treatments will be included as part of this scope.

# Riverside-Leslieville Station - Upcoming Piling Work

- Drilling piles north and south of the Queen bridge to build the foundation for the future Riverside-Leslieville Station
- Construction activities will include pile drilling, steel and rebar installations, and concrete works
- Drill rigs, concrete trucks, lifts, and other machinery will be used to complete this work


## Timeline:

- Starting in mid-December 2024 until late February 2025

## Hours of work:

- Monday - Friday, between 7 a.m. - 7 p.m. and occasionally on weekends between 9 a.m. - 5 p.m.
- Advance notice will be provided for weekend work



 Approximate piling locations

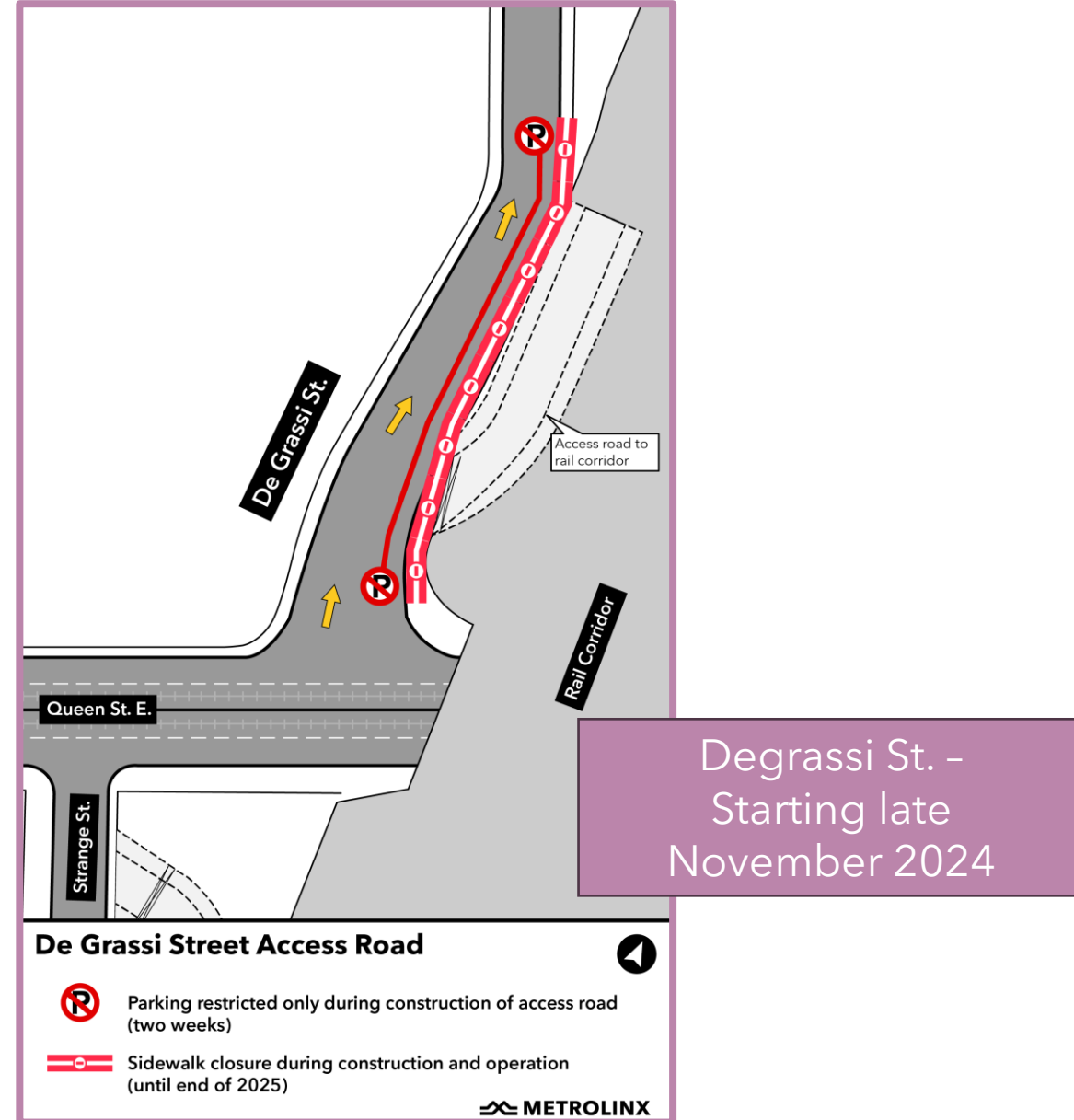
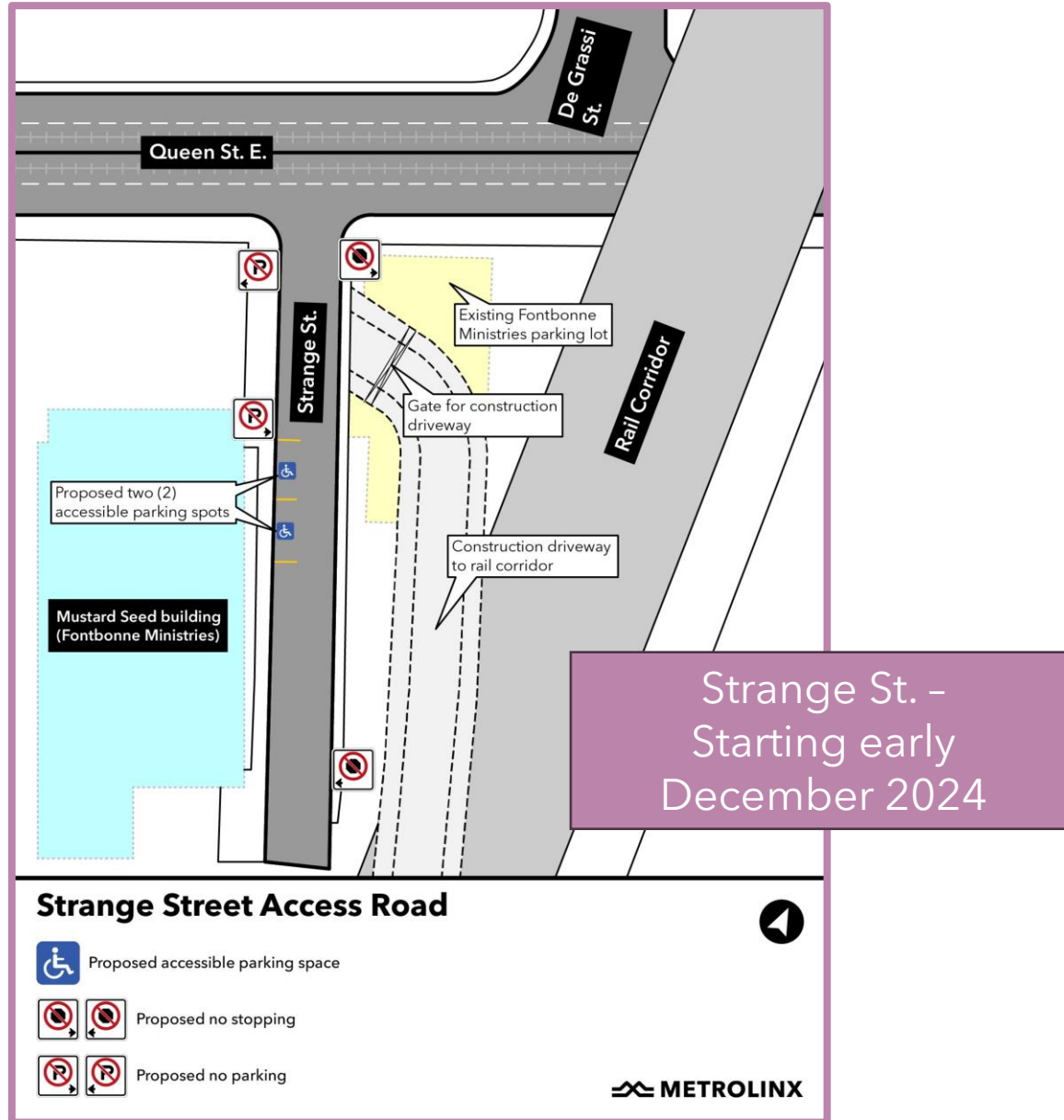
A drill rig installing piles for the new abutments at the Logan bridge





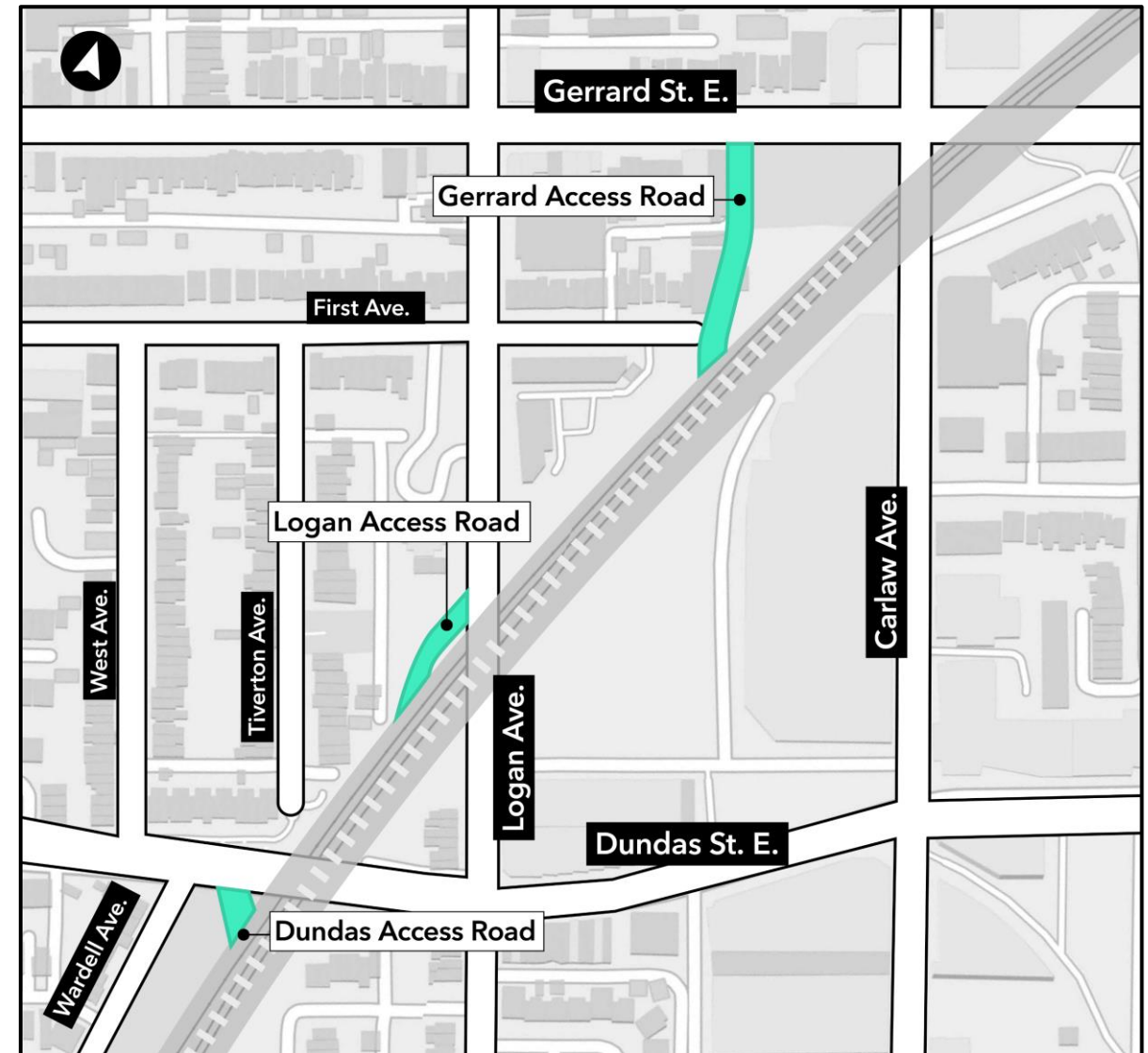
# **Construction Update: Access Roads**

# Access Road Construction - Queen Street East



# Access Road Construction - Dundas Street, Logan Avenue, and Gerrard Street

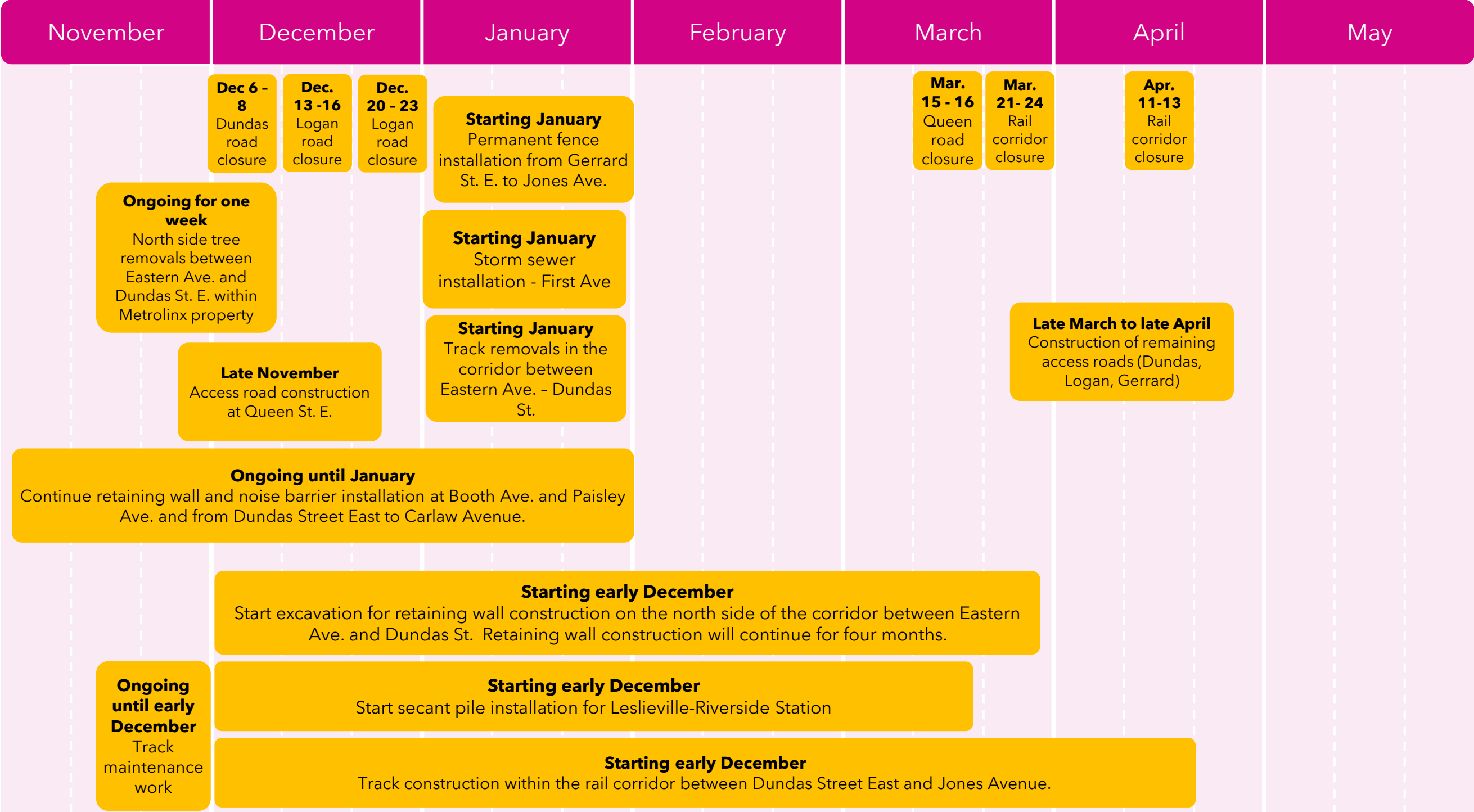
- Three more access roads will be built on the north side of the corridor at Dundas Street, Logan Avenue and Gerrard Street
- Construction of these access roads will begin in Spring 2025
- The current access roads will be closed as the new ones become operational
- Individual notices will be provided in advance of each access road construction





# **Construction Lookahead Fall 2024 - Summer 2025**

# Lakeshore East Joint Corridor - Early works Fall 2024 - Summer 2025 Construction Activities





# Eastern Ave Bridge

# EAST HARBOUR TRANSIT HUB

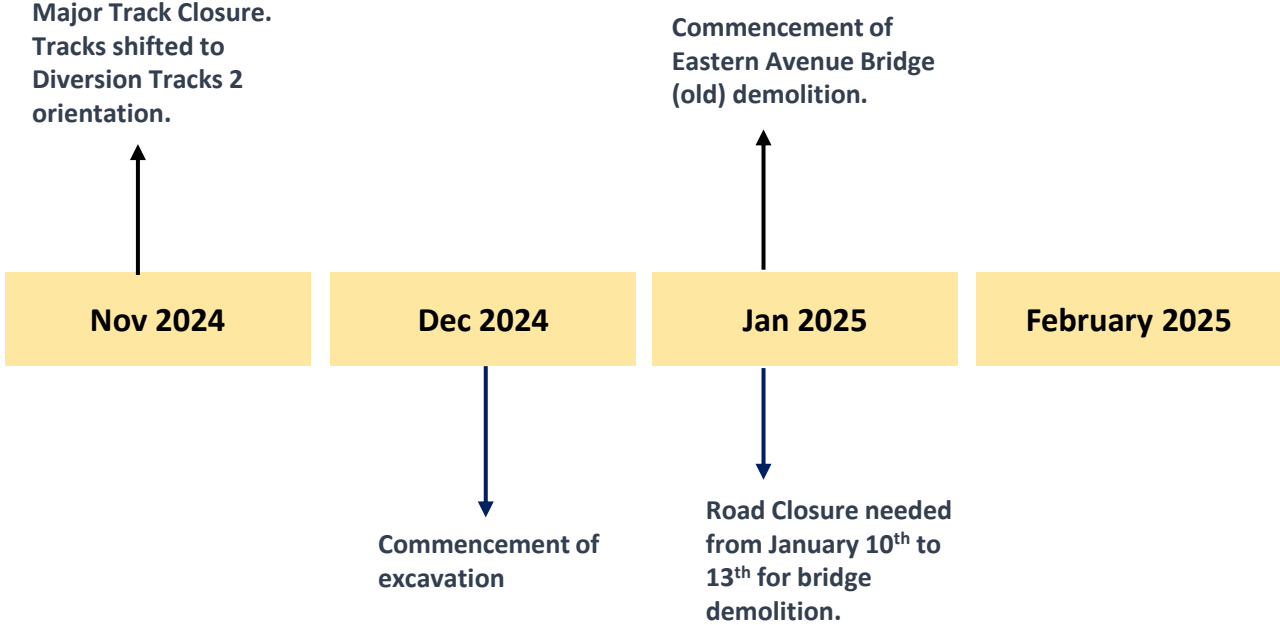
## EARLY WORKS AND EASTERN AVENUE BRIDGE WORK

- Early Works may include such things as: establishing the work zone, moving equipment, supplies, and other resources, geo-technical investigations, utility daylighting, and track work.
- Early works are an important component of any construction project. These activities set the groundwork for major construction and reduce the risk delays to the project.
- Ongoing curb-lane closures on Eastern Avenue are in effect until October 2026\*, to create a safe working zone for crews and machinery.
- There will be a full road, cyclist, and sidewalk closure on Eastern Avenue from Lewis Street to Dibble Street, with Local Traffic Only on Eastern Avenue from Broadview Avenue to Lewis Street as well as from Logan Avenue to Dibble Street. This work is for the safe transporting of conduit from the southern tracks of the bridge to the northern tracks. This is a nighttime closure and the dates are from Dec 4-6.
- We have entered stage 2 as of November 11, 2024, and will now begin mobilizing to work on the northern tracks of the Eastern Avenue Bridge, scopes of which are the bridge demolition and re-build.

• Dates are subject to change

# EAST HARBOUR TRANSIT HUB

## UPCOMING CONSTRUCTION ACTIVITIES



Note: Dates are subject to change





# Action Items and Complaints and Issues Tracker

## Completed Action Items- October

#	Action	Response	Status
1	Metrolinx will forward comments and questions regarding Pape and Danforth raised at the meeting to the respective team.	Questions and concerns raised at the October CLC meeting have been shared with respective team for follow up.	<b>Completed</b>
2	Metrolinx will adjust the language on completed action item #13 to reflect that disruptive work will not occur on all the holidays between December and January (including non-statutory days).	Language adjusted in CLC meeting deck.	<b>Completed</b>
3	Metrolinx will provide timelines for all of the track installations.	Three GO tracks will be installed by the end of the Lakeshore East JC Early Works Project (end of 2025). The two Ontario Line tracks will be installed in 2029 (tentative date). The timeline for the fourth GO track will be confirmed by the GO Expansion Project at a later date (expected 2027/2028).	<b>Completed</b>
4	Metrolinx will provide diagrams of all the access roads, once details are known, as well as a render from street view of access road #3.	Metrolinx will share diagrams for each access road on the north side of the corridor once traffic details are confirmed to be consistent with the diagrams previously shared for access road notices. Street view renders are out of scope for the Contractor. Further details are provided on slides 18-19.	<b>Completed</b>
5	Metrolinx to forward BIA festival dates to DCC, once confirmed, to coordinate construction activities.	Metrolinx has coordinated festival date with the Contractor and Riverside BIA.	<b>Completed</b>

## Completed Action Items - Previous CLC Meetings

#	Action	Response	Status
6	Metrolinx will update local businesses and the BIA about the expected work and mitigations for the west-side flip.	Metrolinx will continue to update the BIA during bi-weekly check ins and update the local- business when schedules are confirmed. Metrolinx is beginning to update local business most impacted by construction on the west side about what to expect.	<b>Completed</b>
7	Metrolinx will inform the community when start times are shifted and the contractor needs to shift to an earlier morning start time for safety purposes.	Metrolinx will continue to provide weekly construction updates to the community and is working closely with Dufferin Construction to ensure work schedules are as accurate as possible.	<b>Completed</b>

## Pending Action Items

#	Action	Response	Status
1	Metrolinx will explore having subject experts present at a future CLC meeting to discuss heritage building designations and the impact of vibration on different structures.	Metrolinx is coordinating the attendance of a heritage subject matter expert to provide information on difference in vibration impact for different properties at an upcoming CLC meeting.	<b>Pending</b>
2	Metrolinx to provide updates to the CLC on the property at 449 Carlaw at future CLC meetings.	Metrolinx will arrange for the appropriate Contractor for the work around 449 Carlaw to attend CLC meeting in the new year.	<b>Pending</b>
3	Metrolinx will determine how to inform residents how to report graffiti issues in the community. MX will discuss bridge responsibility regarding graffiti control and maintenance for the duration of construction.	Residents should report graffiti to the Metrolinx Community Relations Office. The graffiti on the LCBO and Galt Ave. noise barriers was cleaned by the Contractor. Metrolinx is working to confirm the process and maintenance plan for graffiti removal on the bridges and retaining walls during construction.	<b>Pending</b>
4	Metrolinx to confirm the location of the hoarding on the west side of the corridor and update the group.	Metrolinx and Dufferin are coordinating where the hoarding locations on the west side of the corridor will be and will provide an update at the November CLC.	<b>Pending</b>
5	Metrolinx will provide more information regarding the timelines associated with the temporary Dog Off-Leash Area (DOLA) at the next CLC meeting and where it is being relocated.	Metrolinx and the City are having ongoing discussions about timelines around the temporary DOLA.	<b>Pending</b>
6	Metrolinx will discuss the complaint regarding the format and process of CLC summaries with LSE CAC offline.	Metrolinx has spoken to LSE CAC about the CLC summary format with LSE CAC.	<b>Pending</b>

## Pending Action Items

#	Action	Response	Status
7	Metrolinx to explore opportunities for artwork, banners, murals on the west side of the rail corridor, including the BIA mural.	Metrolinx is continuing to explore hoarding artwork ideas on the west side of the corridor and will continue to keep the CLC membership updated.	<b>Pending</b>
8	Metrolinx to confirm restoration plans for the Degrassi historical plaque.	Metrolinx is coordinating restoration plans with Heritage Toronto and will keep the CLC members updated.	<b>Pending</b>

# Complaints and Issues Tracker

#	Complaint / Issue	Resolution
1.	<b>Noise and vibration</b> <ul style="list-style-type: none"> <li>Queen Bridge/De Grassi</li> <li>October 10, 2024</li> </ul>	<ul style="list-style-type: none"> <li>Complaint received about vibration in the evening and the morning.</li> <li><b>Action:</b> The Contractor confirmed they worked later into the night to conduct track work when trains are not running. In addition, they worked on the noise walls and were bringing materials from the yards into the corridor. Metrolinx spoke with the resident, explained the work and confirmed no vibration or noise exceedances were detected.</li> </ul>
2.	<b>Construction signage</b> <ul style="list-style-type: none"> <li>Queen bridge</li> <li>October 16, 2024</li> </ul>	<ul style="list-style-type: none"> <li>Complaint received about construction signage on the sidewalk that did not appear to be in use.</li> <li><b>Action:</b> The Contractor promptly removed signage and materials that were not in use.</li> </ul>
3.	<b>Tree trimming</b> <ul style="list-style-type: none"> <li>First Ave</li> <li>October 17, 2024</li> </ul>	<ul style="list-style-type: none"> <li>Complaint received about trees on Metrolinx property that had overgrown branches that appeared to be at risk of falling into the road.</li> <li><b>Action:</b> The Contractor trimmed the branches accordingly.</li> </ul>
4.	<b>Backup alarm</b> <ul style="list-style-type: none"> <li>De Grassi St</li> <li>October 21, 2024</li> </ul>	<ul style="list-style-type: none"> <li>Complaint received about a tonal backup alarm.</li> <li><b>Action:</b> The Contractor reviewed audio recordings from the noise monitors and did not hear any tonal alarms. The Contractor also reviewed their equipment to ensure they are equipped with broadband backup alarms.</li> </ul>
5.	<b>Vibration</b> <ul style="list-style-type: none"> <li>De Grassi St</li> <li>October 24, 2024</li> </ul>	<ul style="list-style-type: none"> <li>Complaint received about vibrations and concerns about potential for damage to home.</li> <li><b>Action:</b> The Contractor investigated the vibration modeling for this activity and confirmed that the residence is outside the zone of influence (ZOI) from the work. Therefore, while the resident will experience some vibration, it will not cause damage.</li> </ul>
6.	<b>Construction signage</b> <ul style="list-style-type: none"> <li>Queen Bridge</li> <li>October 28, 2024</li> </ul>	<ul style="list-style-type: none"> <li>Complaint received about unused "road closed" sign on Queen St.</li> <li><b>Action:</b> The Contractor removed the sign on the same day.</li> </ul>
7.	<b>Vibration</b> <ul style="list-style-type: none"> <li>Dundas Bridge (Booth/Paisley area)</li> <li>October 29, 2024</li> </ul>	<ul style="list-style-type: none"> <li>Complaint received about vibrations around mid-day.</li> <li><b>Action:</b> The Contractor confirmed they received a warning but no exceedances. When the warning was received, the Contractor adjusted their work methods by switching the vibratory roller used to complete compaction work with a smaller one that emits less force.</li> </ul>

# Complaints and Issues Tracker

#	Complaint / Issue	Resolution
8.	<b>Old fencing leaning</b> <ul style="list-style-type: none"> <li>Behind Gerrard Square</li> <li>November 5, 2024</li> </ul>	<ul style="list-style-type: none"> <li>Complaint received about old fencing behind Gerrard Square leaning towards parking lot</li> <li><b>Action:</b> The Contractor investigated the condition of the fence and confirmed that it will not fall down but needs to be adjusted. The Contractor addressed the fence the same day.</li> </ul>
9.	<b>Backup alarm</b> <ul style="list-style-type: none"> <li>De Grassi St</li> <li>November 6, 2024</li> </ul>	<ul style="list-style-type: none"> <li>Complaint received about a tonal backup alarm.</li> <li><b>Action:</b> The Contractor investigated and found that a subcontractor had to bring outside equipment with a tonal alarm after they had mechanical issues with the one that was on site. The subcontractor was directed to switch the equipment to one with a broadband backup alarm.</li> </ul>
10.	<b>Traffic stop</b> <ul style="list-style-type: none"> <li>Dundas Bridge</li> <li>November 6, 2024</li> </ul>	<ul style="list-style-type: none"> <li>Complaint received from driver about interaction they had with a traffic control person when asked to stop.</li> <li><b>Action:</b> The Contractor spoke with the traffic control person and found that the driver had stopped beyond where they were directed to stop. The Contractor double checked that all their signs are in place to ensure vehicles are aware of the potential need to stop at the bridge.</li> </ul>
11.	<b>Noise</b> <ul style="list-style-type: none"> <li>De Grassi St</li> <li>November 7, 2024</li> </ul>	<ul style="list-style-type: none"> <li>Complaint received about loud overnight noise.</li> <li><b>Action:</b> The Contractor reviewed the noise monitors and confirmed that there were no exceedances. The Contractor confirmed they were reinforcing the existing tracks ahead of shifting them. This had to be done at night when trains are not running. Metrolinx followed up with the resident and provided these details.</li> </ul>
12.	<b>Vibration</b> <ul style="list-style-type: none"> <li>Lewis St/Eastern Ave</li> <li>November 7, 2024</li> </ul>	<ul style="list-style-type: none"> <li>Complaint received about vibrations during the day.</li> <li><b>Action:</b> The Contractor confirmed that the vibrations were due to the construction of the parking lot at Eastern Ave. The Contractor confirmed that no exceedances were detected. Metrolinx followed up with the resident and provided these details, confirming vibrations were within safe limits.</li> </ul>
13-20.	<b>Noise and vibration</b> <ul style="list-style-type: none"> <li>De Grassi St, Wardell St, and Cummings St</li> <li>November 9, 2024</li> </ul>	<ul style="list-style-type: none"> <li>Multiple complaints received about noise and vibration during the weekend major track closure.</li> <li><b>Action:</b> The Contractor confirmed that the activities during the first night of the closure (rail cutting/grading) were required to prepare for the installation of the new tracks. The work needed to take place on the first night to allow enough time install the new tracks during the rail closure and resume GO train service on Monday morning. Metrolinx called back the residents and explained the remaining work on the weekend was less disruptive. The residents were offered mitigations. Metrolinx called the residents to share information and offer mitigations.</li> </ul>

# Complaints and Issues Tracker

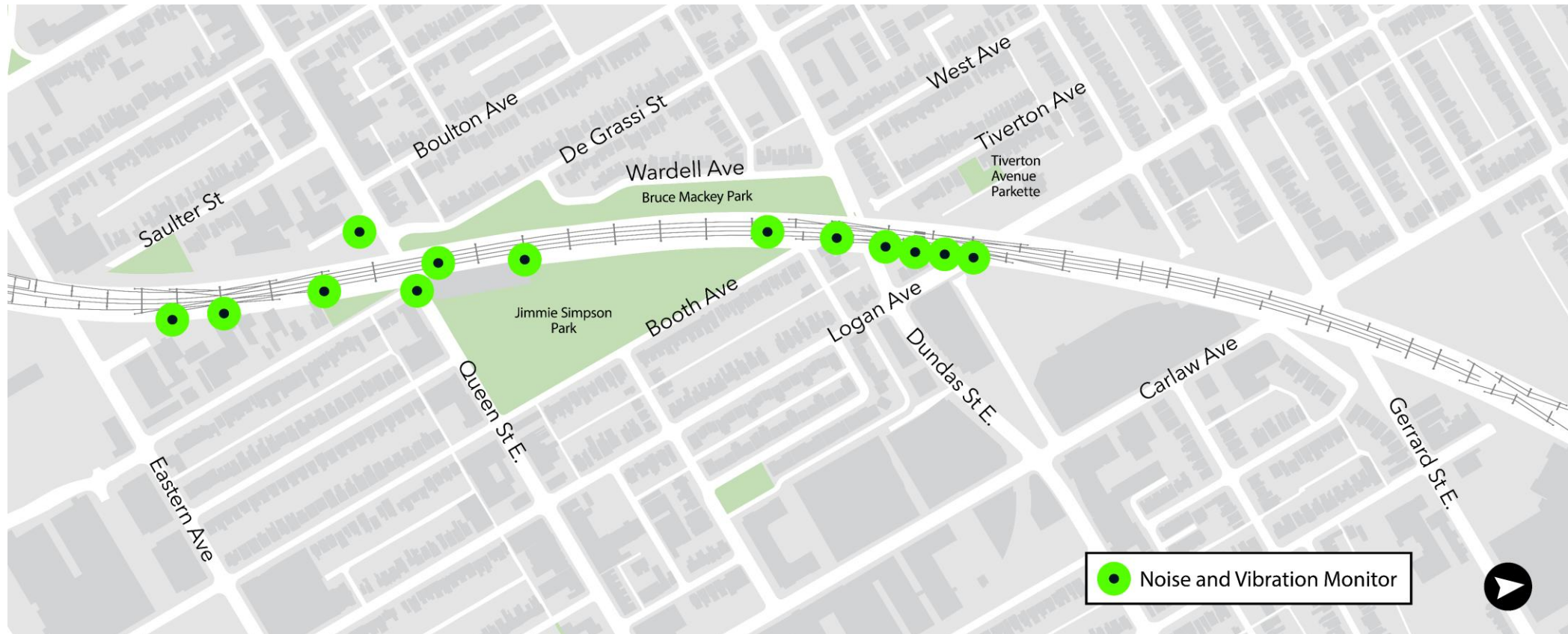
#	Complaint / Issue	Resolution
21.	<b>Noise</b> <ul style="list-style-type: none"> <li>De Grassi St</li> <li>November 12, 2024</li> </ul>	<ul style="list-style-type: none"> <li>Complaint received about overnight noise</li> <li><b>Action:</b> The Contractor was completing remaining track activities that were not completed during the previous weekend's track closure. These activities can only take place when trains are not running at night. Metrolinx spoke to the resident to explain this.</li> </ul>
22.	<b>Contractor parking</b> <ul style="list-style-type: none"> <li>Dundas bridge</li> <li>November 13, 2024</li> </ul>	<ul style="list-style-type: none"> <li>Complaint received about construction vehicles parked in the bike lane around Dundas Bridge.</li> <li><b>Action:</b> The Contractor reminded crews not to park in the bike lane and will be reiterating this message at their daily safety briefings.</li> </ul>
23.	<b>Noise</b> <ul style="list-style-type: none"> <li>Wardell Ave</li> <li>November 15, 2024</li> </ul>	<ul style="list-style-type: none"> <li>Complaint received about overnight noise</li> <li><b>Action:</b> The Contractor was completing track activities including welding tracks between Queen and Dundas. These activities can only take place when trains are not running at night. Metrolinx spoke to the resident to explain this and offer mitigations.</li> </ul>



# Noise and Vibration Update

## October 2024

# Noise and Vibration Monitoring Update - October 2024



- There are thirteen noise and vibration monitoring instruments located across the Lakeshore East Rail Corridor.
- Most noise exceedances were observed on the weekends - there were no overnight exceedances.
- No vibration exceedances were detected in October 2024.
- One noise complaint coincided with the October 2024 exceedances.

• The summary above provides information on noise levels measured over 15-minute intervals (15-minute average).

## Registered Exceedances at Noise Receptor Locations: October 2024

No.	Date/Time of Exceedances	Detail	Location	Source	Corrective action	Complaint received (Y/N)
1.	October 5 - Early morning and afternoon	Noise	Near Dundas bridge	<ul style="list-style-type: none"> <li>Triaxle trucks performing backfilling works</li> <li>Plate tamper performing compaction work</li> <li>Tonal back-up beeper</li> </ul>	<ul style="list-style-type: none"> <li>Reviewed machinery to ensure broadband back up alarms are in use</li> <li>Complete work during the week instead of weekend</li> <li>Allow for greater set back distances between the receptor and the equipment</li> </ul>	N
2.	October 6 - Early morning	Noise	Near Logan, Dundas, and Queen bridges	<ul style="list-style-type: none"> <li>Equipment idling</li> <li>Concrete truck and pump</li> <li>Tonal beeper</li> </ul>	<ul style="list-style-type: none"> <li>Rescheduled activities to start after 9 a.m. on weekends</li> <li>Audit equipment to ensure broadband back up alarms are in place</li> </ul>	N
3.	October 9 - Early morning	Noise	Near Dundas bridge	<ul style="list-style-type: none"> <li>Equipment mobilizing into the site</li> </ul>	<ul style="list-style-type: none"> <li>All crews and subcontractors were informed that no work was permitted before 7 a.m. across the entire Project</li> </ul>	Y
4.	October 12 - Morning	Noise	Near Logan and Dundas bridge	<ul style="list-style-type: none"> <li>Concrete truck and pump</li> <li>Trucks and compactor completing backfilling work</li> </ul>	<ul style="list-style-type: none"> <li>Start concrete pours after 9 a.m. on weekends</li> <li>Noise barriers in place</li> <li>Equipment relocated to provide more distance between the receptor and the work</li> </ul>	N
5.	October 13 - Morning	Noise	Near Dundas and Logan bridge	<ul style="list-style-type: none"> <li>Concrete truck and pump</li> <li>Crane installing noise panels</li> </ul>	<ul style="list-style-type: none"> <li>Work rescheduled to start after 9 a.m.</li> </ul>	N
6.	October 17 - Early morning	Noise	Near the Dundas bridge	<ul style="list-style-type: none"> <li>Relocating the light tower to address a complaint</li> </ul>	<ul style="list-style-type: none"> <li>No action taken - exceedances were minimal</li> <li>Community complaint was prioritized</li> </ul>	N

## Registered Exceedances at Noise Receptor Locations: October 2024

No.	Date/Time of Exceedances	Detail	Location	Source	Corrective action	Complaint received (Y/N)
7.	October 18 - Daytime	Noise	Near Logan bridge	<ul style="list-style-type: none"> <li>Plate tamper performing compaction</li> </ul>	<ul style="list-style-type: none"> <li>Contractor investigated and confirmed exceedances were minimal</li> <li>All possible mitigations were implemented, and work was taking place during the day</li> <li>Works proceeded and monitoring continued</li> </ul>	N
8.	October 19 - Daytime	Noise	Near Logan bridge	<ul style="list-style-type: none"> <li>Plate tamper performing compaction</li> </ul>	<ul style="list-style-type: none"> <li>Contractor to reschedule compaction work to weekdays</li> </ul>	N
9.	October 20 - Early morning	Noise	Near Logan and Dundas bridges	<ul style="list-style-type: none"> <li>Saws</li> <li>Track machine warming up</li> </ul>	<ul style="list-style-type: none"> <li>Contractor to start work after 9 a.m. on weekends</li> </ul>	
10.	October 26 - Early morning and afternoon	Noise	Near Dundas bridge	<ul style="list-style-type: none"> <li>Moving materials with a skid steerer</li> </ul>	<ul style="list-style-type: none"> <li>Contractor rescheduled work to start after 9 a.m.</li> <li>Noise barrier walls were in place</li> </ul>	N
11.	October 27 - Early morning	Noise	Near Dundas bridge	<ul style="list-style-type: none"> <li>Hand tools building formwork</li> </ul>	<ul style="list-style-type: none"> <li>Contractor postponed work and resumed later in the day</li> </ul>	N

## Registered Exceedances at In-Corridor Noise Receptor Locations: October 2024

No.	Date/Time of Exceedances	Detail	Location	Source	Corrective action	Complaint received (Y/N)
1.	October 6 - Early morning and afternoon	Noise	Near Queen bridge	<ul style="list-style-type: none"> <li>Saws and power tools</li> </ul>	<ul style="list-style-type: none"> <li>Contractor confirmed exceedances was detected in the corridor and noise levels were low enough that this would not be considered an exceedance at the closest receptor</li> </ul>	N

- The above table provides information on noise levels measured over 15-minute intervals (15-minute average).
- Exceedances unrelated to Lakeshore East Joint Corridor construction are not reflected in this table.

# What's Next and Wrap Up

# Contact Us

**Metrolinx will keep the community, residents and businesses informed by providing project updates, seeking input and feedback, and addressing questions and concerns effectively and quickly.**

## Stay connected:

Ontario Line e-newsletter @ [Metrolinx.com/OntarioLine](https://www.metrolinx.com/OntarioLine)

## Questions or comments:

[OntarioLine@metrolinx.com](mailto:OntarioLine@metrolinx.com)

24/7 call # 416-202-5100

## Follow us on social media:

Twitter / Facebook / Instagram @ OntarioLine

**Next CLC:** Thursday, December 12



Ontario Line Community Office 770 Queen Street East

# Questions and Answers





# Appendix

# 'North' Side Tree Removals Update

# Trees Identified for Removal at North Side of Rail Corridor

City of Toronto Tree Category	Trees Identified for Removal
<b>Category 1:</b> Trees with diameter of 30 cm or more on private property	11
<b>Category 2:</b> Trees with diameter of 30 cm or more on private property, within 6 metres of study area	5
<b>Category 3:</b> Trees of all diameters on City-owned parkland	38
<b>Category 4:</b> Trees of all diameters within the Ravine and Natural Feature Protection Limit	- (none with RNFP area)
<b>Category 5:</b> Trees of all diameters within City road allowance, adjacent to study area	13
<b>Shared Boundary Tree:</b> Category 5/Mx-owned	1
<b>Shared Boundary Tree:</b> Category 1/Mx-owned	2
<b>Shared Boundary Tree:</b> Category 3/Mx-owned	3
Trees <=30 DBH on private property	19
Trees within Mx-owned property (do not require permit for removal)	395
<b>Total</b>	<b>487</b>

# Construction Lookahead - Tree Removals

Scientific Name	Common Name	Invasive, Pest or Disease Prone	Total Removals (North Side, outside MX ROW)	Total Removals (North Side MX ROW Trees)
Malus sp.	Apple	-	5	2
Pinus nigra	Austrian pine	-	6	-
Populus balsamifera	Balsam poplar	-	1	-
Tilia americana	Basswood	-	-	3
Juglans nigra	Black walnut	-	-	3
Picea pungens	Blue spruce	-	4	-
Prunus sp	Cherry	-	-	2
Juniperus virginiana	Eastern red cedar	-	2	-
Pinus strobus	Eastern white pine	-	3	-
Rhamnus cathartica	European buckthorn	Invasive	-	3
Sorbus aucuparia	European mountain ash	-	1	-

Information as of Sept. 2024

# Construction Lookahead - Tree Removals

Scientific Name	Common Name	Invasive, Pest or Disease Prone	Total Removals (North Side, outside MX ROW)	Total Removals (North Side MX ROW Trees)
Tilia cordata	Littleleaf linden	-	2	-
Acer negundo	Manitoba maple	Invasive	31	158
Acer platanoides	Norway maple	Invasive	32	89
Ulmus thomasii	Rock elm	-	-	1
Elaeagnus angustifolia	Russian olive	Invasive	4	-
Ulmus glabra	Scotch elm	-	1	3
Ulmus pumila	Siberian elm	Invasive	4	41
Acer saccharinum	Silver maple	Pest and Disease Prone	7	3
Ailanthus altissima	Tree-of-heaven	Invasive	11	50
Populus tremuloides	Trembling aspen	-	4	-
Ulmus americana	White elm	Pest and Disease Prone	2	-
Morus alba	White mulberry	Invasive	6	-

Information as of Sept. 2024