

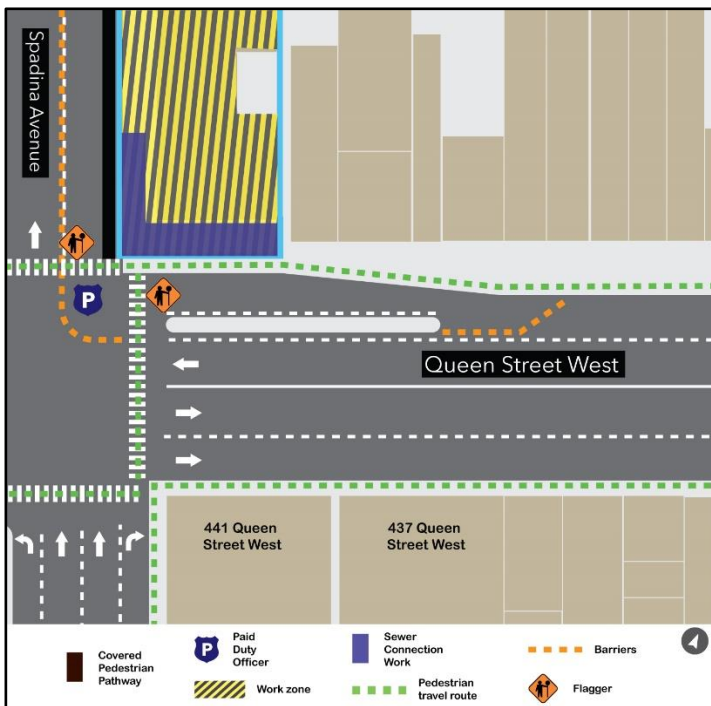
Sewer connection on Queen West Street and Spadina Avenue

Expected start date: As early as November 29, 2024

Expected duration: Up to 1 week

Hours of work: Weekdays from 7:00 a.m. to 7:00 p.m.

Map of work area:



What is happening?

To prepare for construction of the Ontario Line Subway at the future Queen Spadina Station, crews will be completing a sewer connection on Queen West Street and Spadina Avenue.

- This work is done by accessing sewer manholes to connect the Ontario Line site sewer to the main system.
- Crews will drill into the sidewalk to connect the pipelines, equipment such as a small excavator and a hydrovac truck will be used.

What to expect

- The work is scheduled to begin as early as November 29, 2024, and anticipated to be completed in one week. Work will take place from 7:00 a.m. to 7:00 p.m., in order to limit impacts on traffic.
- The traffic turning lane on right hand side at Queen West Street will be closed between 9:00 a.m. and 4:00 p.m. and re-opened again for traffic use.
- A portion of the northbound sidewalk at Queen West Street and a portion of the Eastbound of Spadina Avenue will be closed and pedestrians will be safely detoured along the work zone.

- Area residents and businesses can expect to hear noise from work equipment, specifically hydrovac trucks and saw cutting tools as required. Crews will take measures to minimize noise impacts wherever possible.
- Traffic barrels and barriers will be in place to separate and secure work zones for pedestrian safety.
- Paid Duty Officers will be on site ensuring the safety of pedestrians.
- Work may be postponed or rescheduled due to unforeseen circumstances.
- All necessary construction permits have been obtained.
- For more information about upcoming station work please see metrolinx.com/Ontarioline or sign up for the e-newsletter.

About the Ontario Line

- 15.6-kilometre subway line that will make it faster and easier to travel within Toronto and beyond.
- 15 stops and more than 40 connections to other transit, including GO train, subway, LRT, streetcar, and bus lines.
- Less than 30 minutes from one end of the line to the other.
- 28,000 fewer car trips each day.

Contact us:

Call us 24/7 at: [416-202-5100](tel:416-202-5100)

Write to us at: ontarioline@metrolinx.com

Find us on X, Facebook, and Instagram:

[@ontarioline](#)

Visit the website:

www.metrolinx.com/ontarioline

Visit our community offices:

770 Queen Street East (near Queen & Broadview)

General hours:

Mondays, Tuesdays, and Fridays: 9:00 a.m. to 5:00 p.m.

Wednesday: 1:00 p.m. to 6:00 p.m.

Thursday: 10:00 a.m. to 6:00 p.m.

Thorncliffe Park:

East York Town Centre

45 Overlea Blvd., Toronto, ON M4H 1C3

Unit 153 (across from the Rogers store)

General hours:

Monday – Friday, 9 a.m. – 5 p.m.