

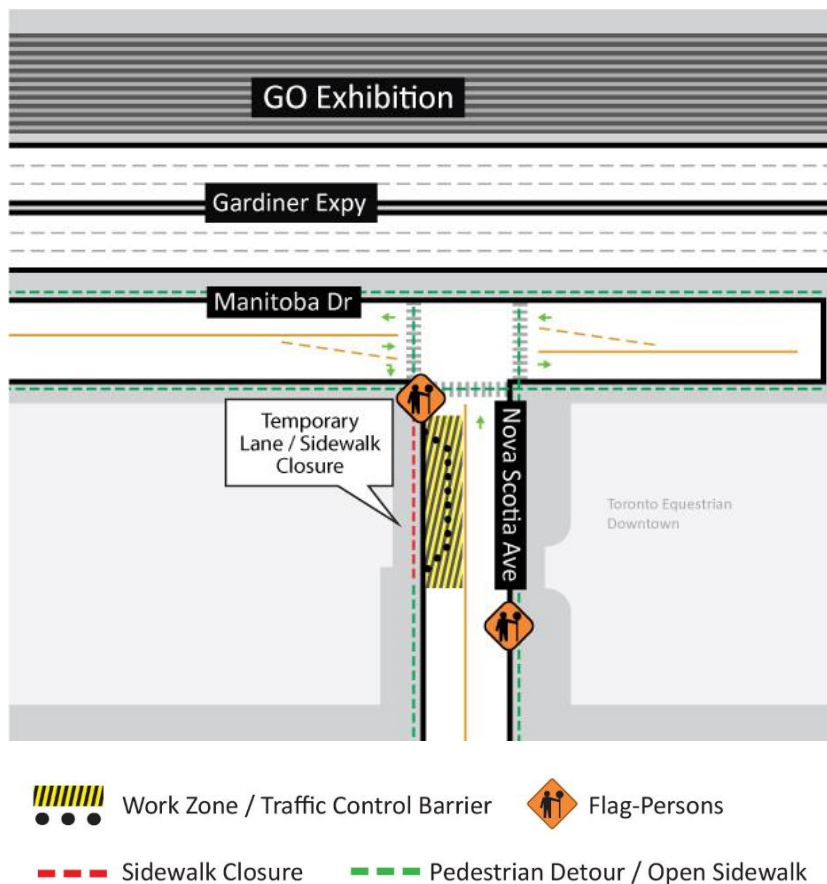
# Monitoring device installation on Nova Scotia Avenue

**Expected start date:** As early as January 22, 2024

**Expected duration:** 1 day

**Hours of work:** 7 a.m. to 7 p.m.

## Map of work area:



## What is happening?

To prepare for construction of the Ontario Line Subway at Exhibition Station, crews will be installing monitoring devices in roadway on Nova Scotia Avenue.

- A temporary lane closure is required for crews to safely carry out their work. Intermittent closures of the sidewalk and traffic lanes around active work zones is to be expected.
- This work is done by accessing sewer manholes to assess the conditions of sewers and cabling before station construction begins.
- Crews will also drill into the road to install monitors. Once complete, the drill areas will be restored. Equipment such as a saw cutter and a hydrovac truck will be used.

---

## What to expect

- A temporary lane reduction for vehicles and pedestrians on Nova Scotia Avenue, south of Manitoba Drive. A traffic control person will be on site when work is underway, guiding local traffic.
- The work is scheduled to begin as early as January 22, 2024, and anticipated to be completed within 1 day once the work starts. Work will take place as of 7 a.m. Crews are expected to be onsite prior to 7 a.m. to set up equipment.
- Area residents and businesses can expect to hear noise from work equipment, specifically hydrovac trucks and saw cutting tools as required. Crews will take measures to minimize noise impacts wherever possible.
- All closures for work are temporary and intermittent; areas will only be closed while crews are surveying the specific areas. The areas will be returned to public use upon completion of the monitoring device installation.
- Work may be postponed or rescheduled due to unforeseen circumstances.
- All necessary construction permits have been obtained.
- For more information about upcoming station work please see [metrolinx.com/Ontarioline](https://www.metrolinx.com/Ontarioline) or sign up for the e-newsletter

---

## About the Ontario Line

- 15.6-kilometre subway line that will make it faster and easier to travel within Toronto and beyond.
- 15 stops and more than 40 connections to other transit, including GO train, subway, LRT, streetcar, and bus lines.
- Less than 30 minutes from one end of the line to the other.
- 28,000 fewer cars on the road each day.

### Contact us:

Call us 24/7 at: [416-202-5100](tel:416-202-5100)

Write to us at: [ontarioline@metrolinx.com](mailto:ontarioline@metrolinx.com)

Find us on X, Facebook, and Instagram: [@ontarioline](https://www.instagram.com/ontarioline)

Visit the website: [www.metrolinx.com/ontarioline](https://www.metrolinx.com/ontarioline)

### Visit our community office:

770 Queen Street East (near Queen & Broadview)

General hours:

- Mondays, Tuesdays, and Fridays: 9:00 a.m. to 5:00 p.m.
- Wednesdays and Thursdays: 10:00 a.m. to 6:00 p.m.

Disponible en français sur demande. Si vous êtes intéressé, veuillez envoyer un courriel à [ontarioline@metrolinx.com](mailto:ontarioline@metrolinx.com).