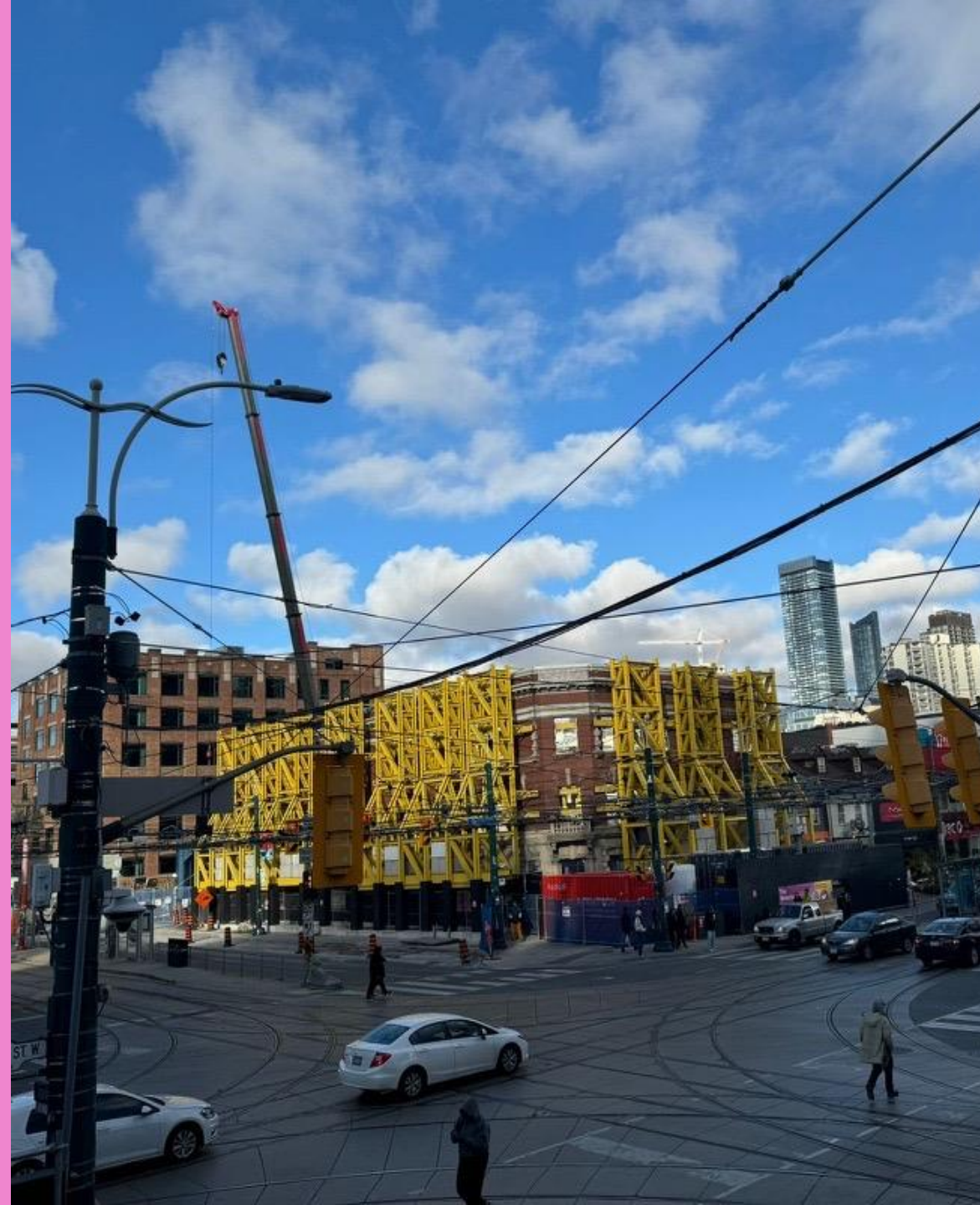


**Ontario Line**

# Queen-Spadina

Construction Liaison Committee

December 3, 2024



# Agenda

## Welcome

- Introductions
- Land Acknowledgment
- Safety Moment
- Action Items

## Presentation

- Construction Updates
- Upcoming Work

## Feedback and Discussion





# Land Acknowledgment

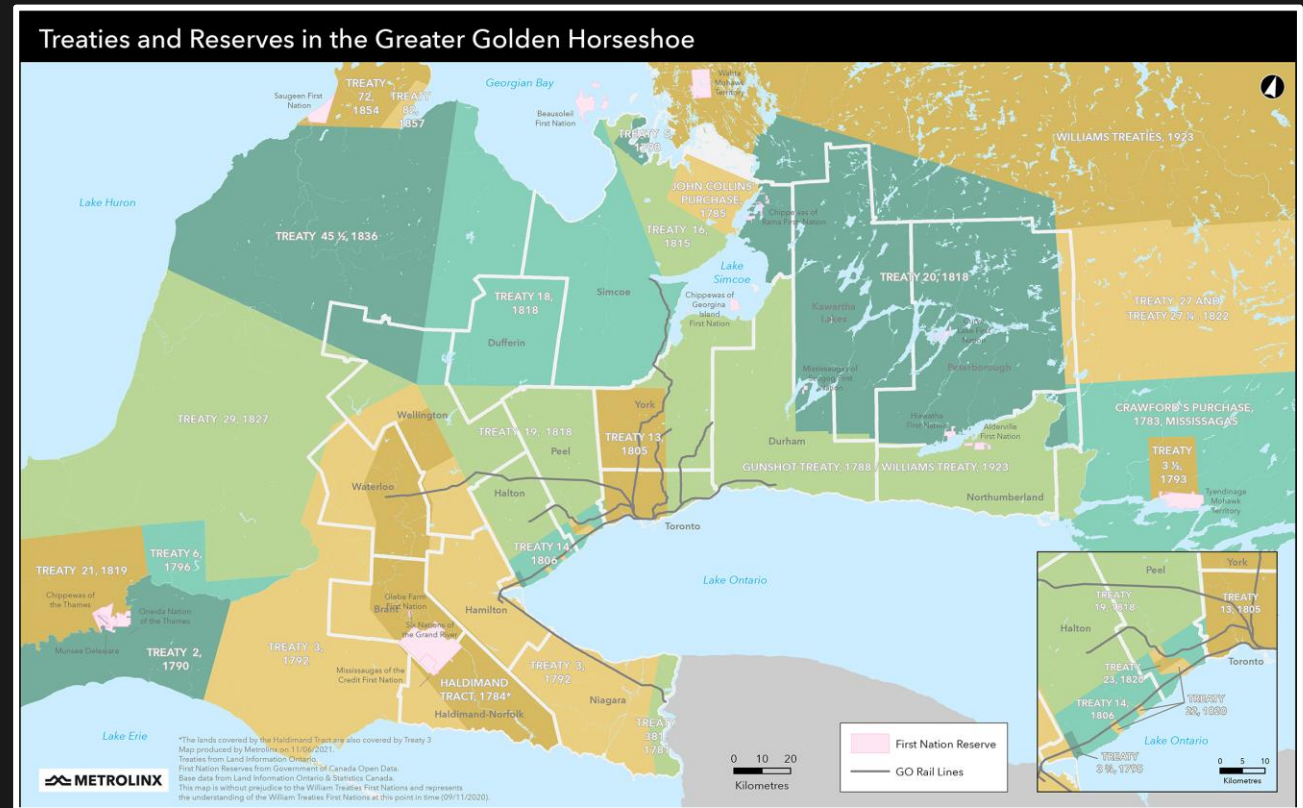
Let us take a moment to acknowledge we are on lands that have been, and continue to be, home to many Indigenous Peoples including the Anishnabeg, the Haudenosaunee and the Huron-Wendat peoples.

We are all Treaty people. Many of us have come here as settlers, as immigrants or involuntarily as part of the trans-Atlantic slave trade, in this generation, or generations past.

We acknowledge the historic and continued impacts of colonization and the need to work towards meaningful reconciliation with the original caretakers of this land.

We acknowledge that Metrolinx operates on territories and lands covered by many treaties that affirm and value the rights of Indigenous communities, Nations and Peoples.

We understand the importance of working towards reconciliation with the original caretakers of this land. At Metrolinx, we will conduct business in a manner that is built on a foundation of trust, respect and collaboration.



# Safety Moment

## STAYING SAFE AROUND THE QUEEN-SPADINA CONSTRUCTION SITES

**As the work continues to deliver the Ontario Line, numerous safety protocols are in place to ensure everyone's safety around construction sites:**

### **Pedestrian Safety:**

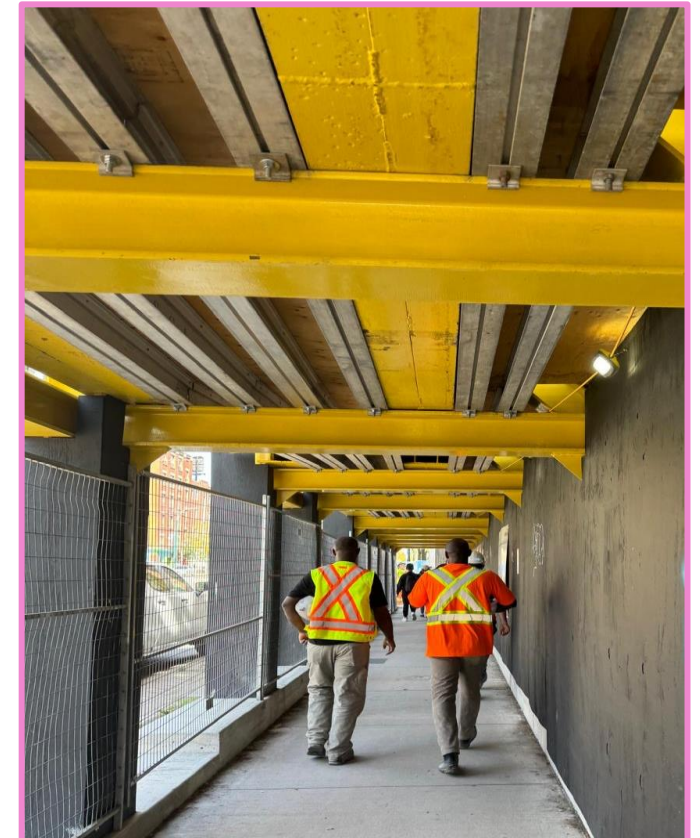
- Follow designated pathways and covered walkway or detours, such as the covered pathways set up on Spadina Ave. Avoid crossing into restricted areas or roadways; barriers are in place for your protection (for example, at the South site along Queen West Street)

### **Stay Alert:**

- Be aware of heavy equipment and vehicles entering and exiting the site.
- Obey directions of flaggers on-site and around works; they are there for your safety.
- Limit distractions, such as headphones or texting, near the construction zone.

### **Cyclist Caution:**

- Dismount and walk bikes through pedestrian detours as necessary.
- Follow cyclist-specific signage and share pathways responsibly.



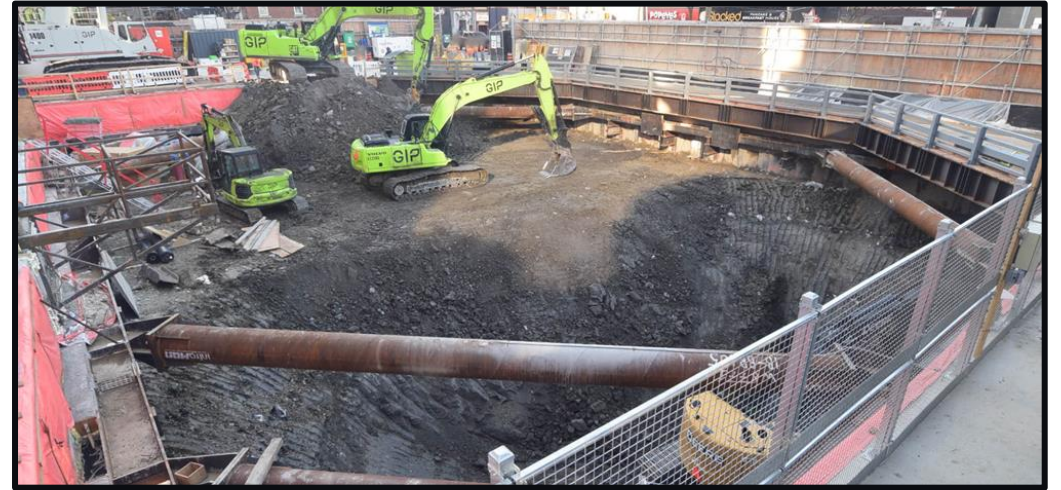
*Covered pedestrian access along the work zone on Spadina-Avenue North site*

# Queen-Spadina Construction Update



# Excavation Update

- Excavation is underway at the Queen-Spadina North and South sites.
- To support excavation, large cross beams are being installed, spanning the width of the excavation shafts. These beams are called struts and walers.
- The beams act as bracing systems, adding additional structural support for the excavation shaft. They ensure stability and strength at the top of the trench.
- At the North site, excavation of the station shaft is nearly complete; upon completion crews will continue excavation works, moving to the station cavern.
- Crews are expected to begin excavation work for station tunnelling, also sometimes referred to as the station cavern in January 2025. This phase of work will begin at the future North station site.

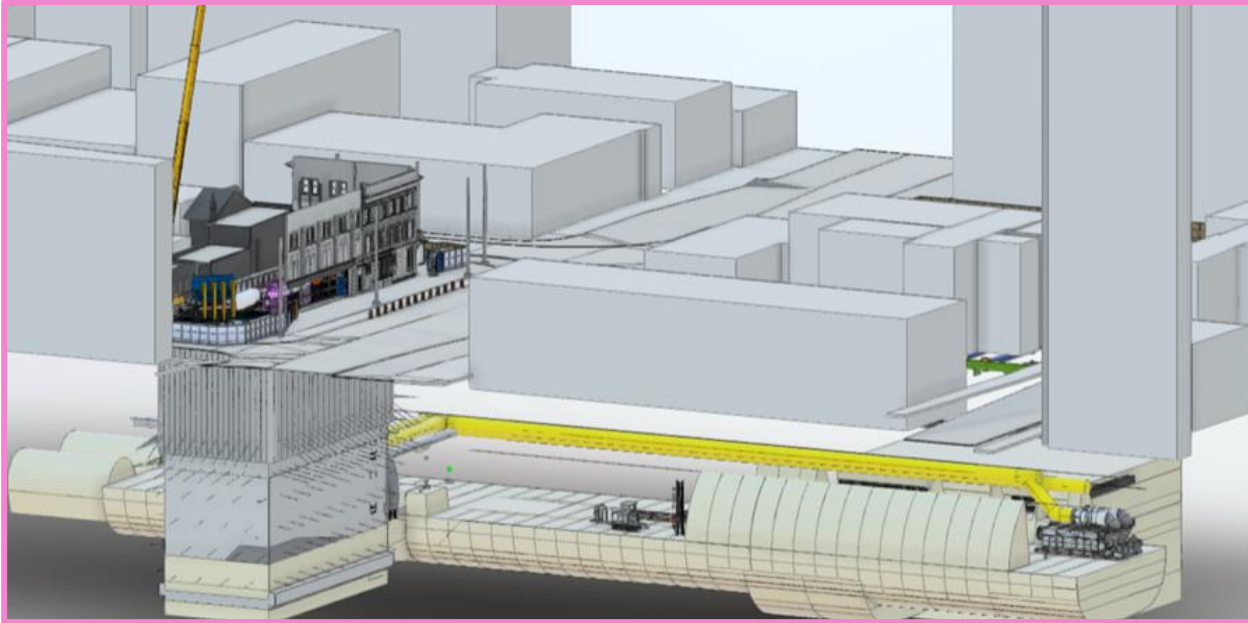


*Struts and walers installation underway as excavators dig down at the future Queen-Spadina South station site*



*View of excavation at the future Queen-Spadina North station site.*

# Focus on: Station Cavern

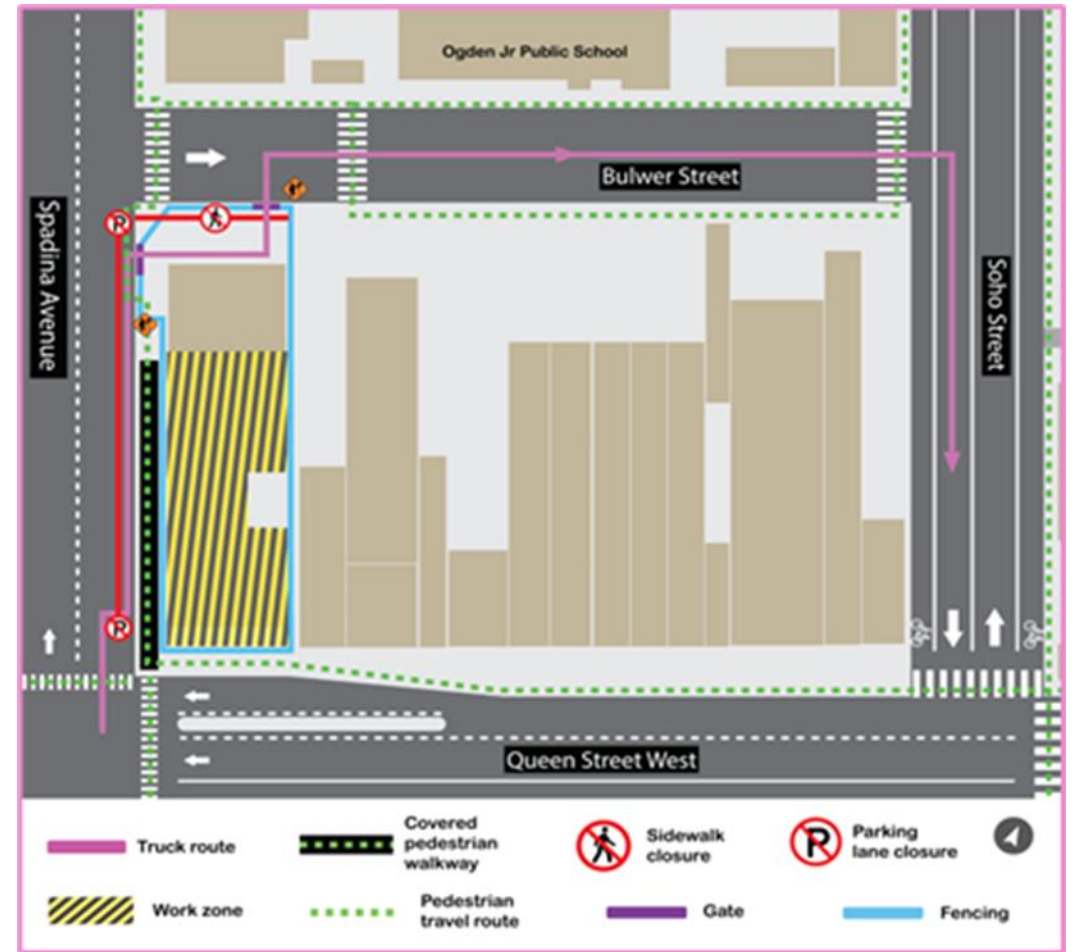


*Diagram of station cavern; sample drawing for reference only*

- Excavation of the station cavern prepares the site for the future station platform; it is also where the tunnelling will pass in the future. This process is essential in large-scale tunnel construction projects.
- Crews will use a sequential excavation method (SEM) to excavate the future station cavern.
- This work at the future **North station** site is expected to take place on a 24-hour work shift, seven days a week.
- Specialized machinery will be used to excavate the station cavern, removing soil, rock, and other debris generated.
- This machinery is expected to be delivered and assembled on-site this month (December 2024).

# Site Access: Future North Station Site

- Trucks will enter via Spadina Avenue at Bulwer Street and exit on to Bulwer Street.
- Trucks will proceed Eastbound on Bulwer to Soho Street to exit the neighbourhood.
- The parking lane along the Spadina Avenue will remain closed.
- Traffic control personnel will be on-site to manage vehicle and pedestrian safety during truck movements.
- During periods with frequent truck movement, an additional flagger has been added at the corner of Bulwer Street and Soho Street during timeframes aligning to local school drop-off and pick-up time.
- Residents of Bulwer Street will continue to have access to their parking, and businesses in the area will still be able to receive deliveries.



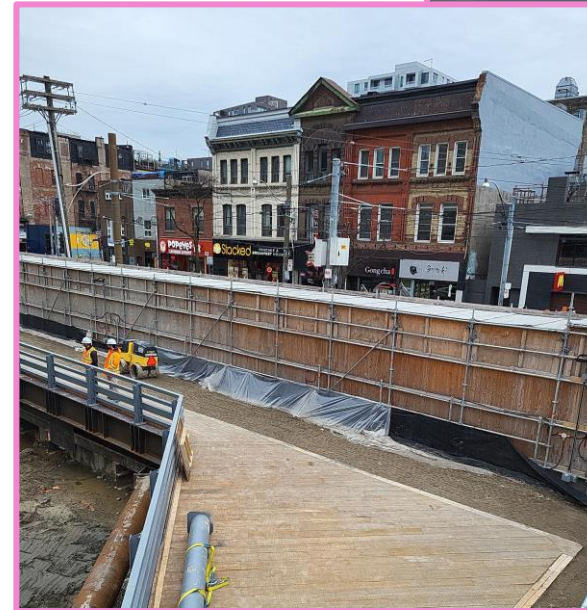
Map of the truck route along the North site



# Installation of working platform and paving : Future South Station Site

- At the future **South station** site, crews have completed installation of a working platform.
- The working platform provides safe access around the site shaft, for workers and machinery.
- It also assists with management of dust and mud on-site, by creating a covered area on which crews can work.
- Asphalt paving has been completed on the south site to reduce significantly mitigate dust.
- These newly paved surfaced prevent air quality, enhancing safety and cleanliness through the area.

Paving completion  
at the South site



*View of working platform installation  
at future South station site*

# Upcoming Work

# Sewer Connections at Future Station Sites

- Work to connect the Ontario Line site sewer to the main sewer system is expected in mid-to-late December at both future station sites
- Hours of work and expected duration will be updated closed to start dates.
- During this work, some traffic lane closures, or pedestrian detours may be required. More information will be provided.



# CONSTRUCTION LOOK-AHEAD\*

## Queen-Spadina

Expected timeline	Activity	Location
Winter 2024	Sewer connections	Future North station site Future South station site
Winter 2024 to late 2025	Station shaft excavation, including installation of struts and walers	Future South station site
Early 2025 to late 2026	Station cavern excavation	Future North station site Future South station site

*\*All dates subject to change based on unforeseen circumstances*

# Discussion

# Keeping You Informed

**Metrolinx will keep the community, residents and businesses informed by providing project updates, seeking input and feedback, while addressing questions and concerns effectively and quickly.**

**Next CLC meeting:** This will be our last meeting for 2024. Our next meeting will be scheduled for February 4<sup>th</sup>, 2025.

**Connect with us:**

- Bradley Naismith, Community Engagement Advisor
- Ross Andersen, Senior Advisor, Community Engagement

Email: [OntarioLine@metrolinx.com](mailto:OntarioLine@metrolinx.com)

Telephone 24/7 @ 416-202-5100

**Follow us on social media:**

Twitter / Facebook / Instagram: @OntarioLine



*Scan here to sign up for the Ontario Line e-newsletter*

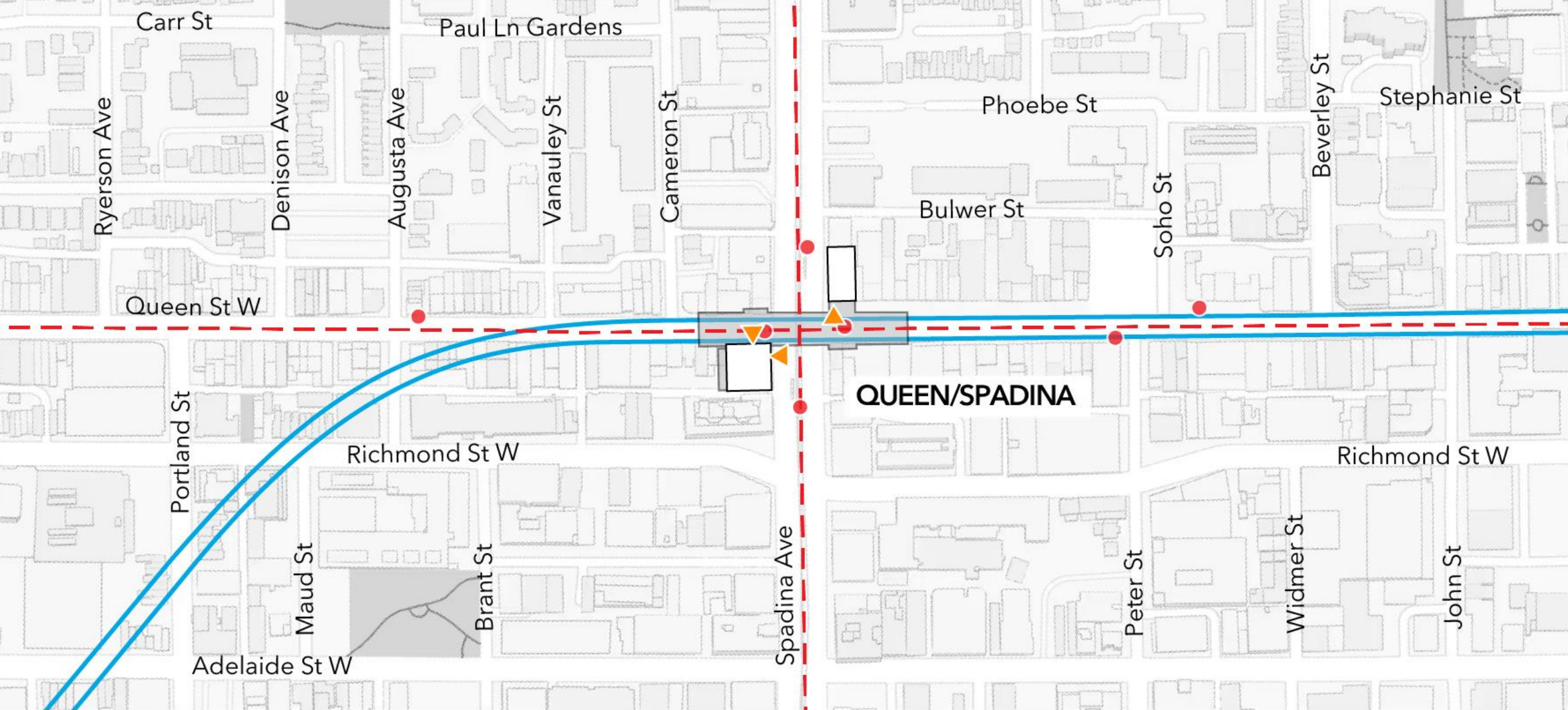


*Scan here to explore Ontario Line CLC documents*





# Appendix

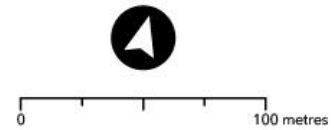


**QUEEN/SPADINA**

## Queen/Spadina Station

- Tunnelled
- - - Streetcar Line
- Streetcar Stop
- ▲ Station Entrance
- Station Building
- Underground Station Area

**Note:** Heritage attributes will be conserved where possible.







Queen St W

Queen-  
Spadina

QUEEN-SPADINA

7 AM - 10 AM  
3 PM - 7 PM  
MON - FRI  
TTC VEHICLES  
EXCEPTED

4511

DO NOT PASS  
OPEN DOORS

Artist's rendering – subject to change. Transit-Oriented Community proposals not shown.





Artist's rendering – subject to change. Transit-Oriented Community proposals not shown.