

Ontario Line

# King-Bathurst Station

# Construction Liaison Committee

December 5, 2024

 METROLINX



# Agenda

## Welcome

- Introductions
- Land Acknowledgment
- Safety Moment
- Action Items

## Presentation

- Construction Updates
- Upcoming Work
- We Are Here For You

## Feedback and Discussion (30 Minutes)



# Land Acknowledgment

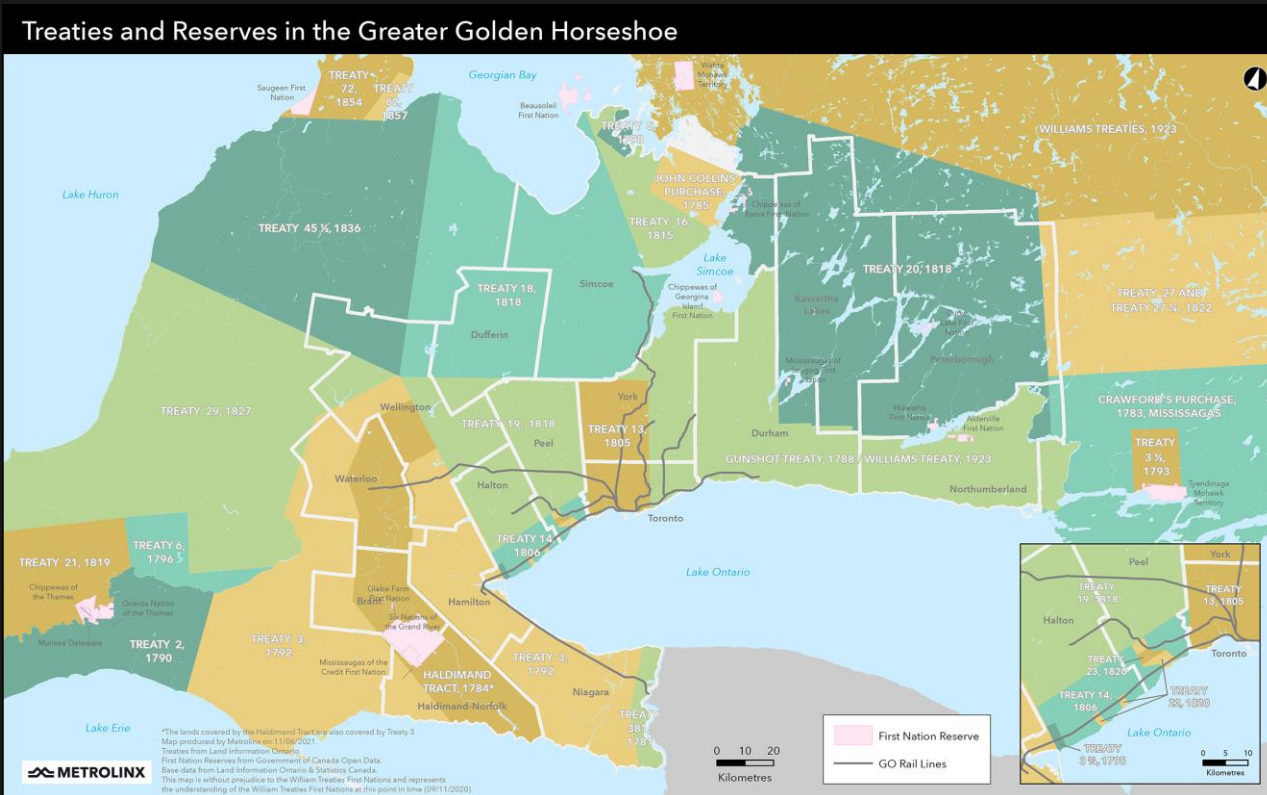
Let us take a moment to acknowledge we are on lands that have been, and continue to be, home to many Indigenous Peoples including the Anishnabeg, the Haudenosaunee and the Huron-Wendat peoples.

We are all Treaty people. Many of us have come here as settlers, as immigrants or involuntarily as part of the trans-Atlantic slave trade, in this generation, or generations past.

We acknowledge the historic and continued impacts of colonization and the need to work towards meaningful reconciliation with the original caretakers of this land.

We acknowledge that Metrolinx operates on territories and lands covered by many treaties that affirm and value the rights of Indigenous communities, Nations and Peoples.

We understand the importance of working towards reconciliation with the original caretakers of this land. At Metrolinx, we will conduct business in a manner that is built on a foundation of trust, respect and collaboration.



## SAFETY MOMENT - STAYING SAFE AROUND THE KING-BATHURST CONSTRUCTION SITE

**As work continues to deliver the Ontario Line, numerous safety protocols are in place to protect the community and the public:**

### **Pedestrian Safety**

- Follow designated pathways and detours when applicable.
- Avoid crossing into restricted construction areas; barriers are in place for your protection.

### **Stay Alert**

- Be aware of equipment and vehicles entering and exiting the sites.
- Limit distractions, such as headphones or texting, near the construction zone.

### **Cyclist caution**

- Dismount and walk bikes through pedestrian detours if necessary.
- Follow cyclist-specific signage and share pathways responsibly.



*Construction work at the south site, facing Bathurst Street.*

## CLC ACTION ITEMS - FROM NOVEMBER 2024

#	ACTION ITEM	RESPONSE	STATUS
1	<b>Community concerns for noise and vibration impacts related to excavation works at the north site.</b>	<p>The community response to ongoing excavation work &amp; noise has been heard. Metrolinx understands that there is ongoing concern - due to ongoing feedback, additional noise and vibration monitors are being deployed to new, expanded locations to prepare for the next phase of work.</p> <p>This data will help capture overall site construction information as we work with the community.</p> <p>The first phase of excavation work is now complete. The next phase of work is station cavern creation.</p>	<b>Ongoing</b>

Ontario Line

# King-Bathurst Construction Updates

# KING-BATHURST STATION CONSTRUCTION LOOK-AHEAD (SUBJECT TO CHANGE)

Major construction milestones to propel the Ontario Line subway forward.

**December 2024**

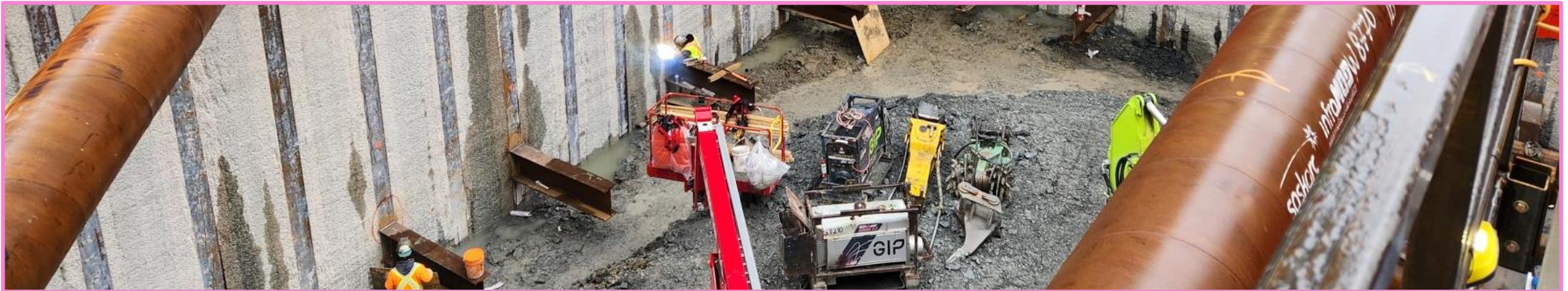
Overhead Crane /  
Acoustic Shelter  
Ceiling Panels / Adit  
Excavation

Station Cavern  
Work (ongoing)

**Spring 2025**

South Site  
Excavation  
(ongoing)

**January 2025**



## NORTH SITE SHAFT EXCAVATION UPDATE

- **North site shaft excavation has reached future platform level, to a depth of roughly 30 meters.**
- Excavation has progressed through soft soil, to deeper levels where various rock types are encountered, predominantly made up of shale.
- This rock has been broken up by special attachments on excavators, designed to fragment the rock into smaller pieces, before it is raised out of the shaft, and hauled away.
- Once the final steps are in place, such as shotcrete (sprayed concrete on the walls), as well as rock bolting, the shaft is completed, and station cavern work can commence.
- Station cavern work is the process in which machinery starts excavating horizontally, instead of vertically, to connect to the south site, under the intersection.

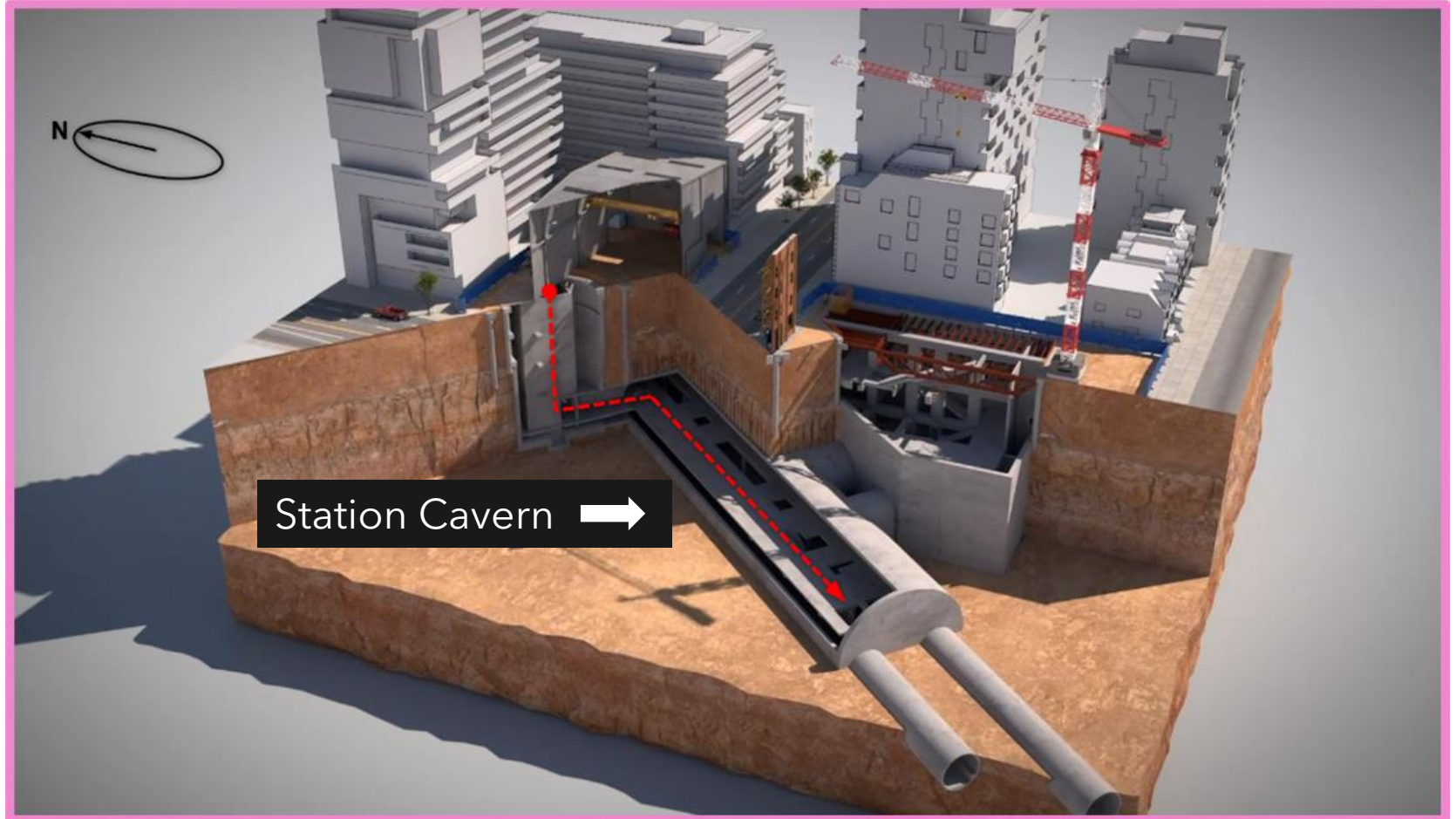


*Looking down the excavation shaft, on the north site.*



## UPCOMING WORKS: STATION CAVERN EXCAVATION

- **As the next phase in excavation, station cavern work is commencing in early December 2024.**
- Crews on the north site are working 24-hour shifts, in the excavated area, from Monday-Sunday.
- The work to create the station cavern, pictured at right, is expected to run through end of 2025.
- While in the excavated shaft, crews will commence mining the cavern spacing.



## ONGOING WORKS: SOUTH SIDE EXCAVATION

- **South site excavation is more than 30 per cent complete.**
- The ongoing excavation is digging down towards the final level of depth for the station, 40 meters below the street level.
- This month, crews will continue to work from 7:00 a.m. through 11:00 p.m.
- To support this ongoing excavation, large cross beams (700 tonnes worth) continue to be installed, spanning the width of the excavation shafts.
- **These support beams are called struts and walers.**



*Example of installation of struts and walers (beams protruding on the left) while excavators dig down, to a future Ontario Line station.*

Ontario Line

# Contact Information

## KEEPING YOU INFORMED

**Metrolinx will keep the community, residents and businesses informed by providing project updates, seeking input and feedback, while addressing questions and concerns effectively and quickly.**

**Community Open House:** January 2025 (details to be shared)

**Next CLC meeting:** February 6, 2025

### **Connect with us:**

- Bradley Naismith, Community Engagement Advisor
- Ross Andersen, Senior Advisor, Community Engagement

Email: [OntarioLine@metrolinx.com](mailto:OntarioLine@metrolinx.com)

Telephone 24/7 @ 416-202-5100

### **Follow us on social media:**

Twitter / Facebook / Instagram: @OntarioLine



*Scan here to sign up  
for the Ontario Line  
e-newsletter*



*Scan here to explore  
Ontario Line CLC  
documents*



Départs in 14 minutes

- Osgoode
- Queen
- Moss Park
- Cork Town
- Paulina
- East Harbour
- Lealieville
- Gerrard
- Pape
- Cosburn

Departs  
Départ  
4 min

King-Bathurst

Direction	16:28	16:30
160 Danmore	16:28	16:30
160 Bathurst	16:28	16:30

King-Bathurst

King-Bathurst

16:30 Science Center  
16:30 Science Center  
16:30 Science Center





KING-BATHURST