

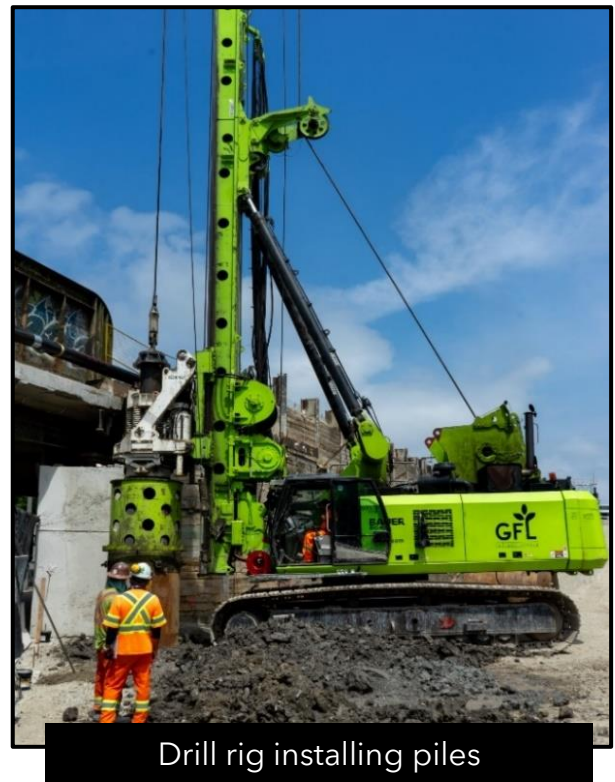
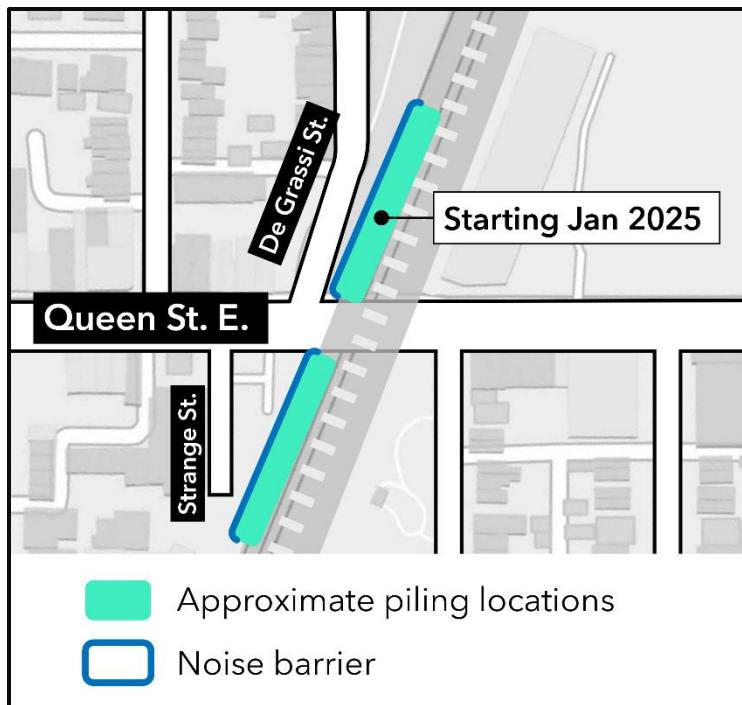
# Piling work at the Queen Street East bridge

## Start dates:

- **Prep work:** Ongoing until Friday, December 20, 2024
- **Pile drilling:** Starting as early as Thursday, January 2, 2025

**Duration:** until approximately April 2025

**Hours of work:** Monday - Friday, between 7 a.m. - 7 p.m., with some weekend work on Saturdays between 7 a.m. - 5 p.m. and Sundays from 9 a.m. - 5 p.m.



## What is happening?

- Work is ongoing to prepare for pile drilling at the Queen bridge.
- This work includes building a platform for the drill rig (shown above), installing a noise barrier wall, setting up equipment (crane and drill rig), and building concrete forms.
- Compaction work will be required to install the platform for the noise barriers - vibrations may be noticeable at nearby properties during this work.

- Preparatory work will be ongoing until approximately Friday December 20, 2024.
- Pile drilling on the north side of Queen Street bridge, near Degrassi Street, will start as early as Thursday, January 2, 2024.
- A drill rig (pictured above) will be used to install the piles. Construction activities will include drilling, excavation, hauling, rebar and steel installation, and concrete pouring.
- Piling will take place during the daytime from Monday to Friday between 7 a.m. – 7. p.m.
- Occasional weekend work may be required between 7 a.m. – 5 p.m. on Saturdays and 9 a.m. – 5 p.m. on Sundays. Advance notice will be provided for weekend work.
- **Crews will avoid weekend work during December to minimize community disruption during the holiday season.**
- Solid barriers will be installed around each work area to mitigate noise and dust from the piling work. The barriers will be approximately five metres tall.

## What to expect

- Drill rigs will be used to dig circular holes into the ground which will then be filled with steel, rebar, and concrete to form piles.
- Construction equipment will access the rail corridor from Eastern Avenue.
- Secant piling is the process of overlapping piles with one another to form a solid concrete wall. These walls will be installed to support the future Riverside-Leslieville station.
- Noise and vibration from construction equipment including vibratory rollers, drill rigs, concrete trucks, and other machinery can be expected.
- Noise and vibration monitors are in place to ensure acceptable levels are maintained.
- Construction equipment and materials will be properly secured within the work zones.
- Work may be delayed due to weather conditions or unforeseen circumstances.

## About the project

- 15.6-kilometre subway line that will make it faster and easier to travel within Toronto and beyond.
- 15 stops and more than 40 transit connections, including GO, TTC, and more.
- Approximately 30 minutes from one end of the line to the other.

### Contact us:

Call us 24/7 at: [416-202-5100](tel:416-202-5100)

Write to us at: [ontarioline@metrolinx.com](mailto:ontarioline@metrolinx.com)

Find us on Twitter, Facebook, and

Instagram: [@ontarioline](https://www.instagram.com/ontarioline)

Visit the website:

[www.metrolinx.com/ontarioline](http://www.metrolinx.com/ontarioline)

### Visit our community offices:

**770 Queen Street East (near Queen & Broadview)**

General hours:

Mondays, Tuesdays, and Fridays: 9:00 a.m. to 5:00 p.m.

Wednesdays: 1:00 p.m. to 6:00 p.m.

Thursdays: 10:00 a.m. to 6:00 p.m.

### Thorncliffe Park:

East York Town Centre

45 Overlea Blvd., Toronto, ON M4H 1C3

Unit 153 (across from the Rogers store)

General hours:

Monday to Friday, 9 a.m. to 5 p.m.

- 28,000 fewer cars on the road each day.

**Contact us:**

Call us 24/7 at: [416-202-5100](tel:416-202-5100)

Write to us at: [ontarioline@metrolinx.com](mailto:ontarioline@metrolinx.com)

Find us on Twitter, Facebook, and

Instagram: [@ontarioline](https://www.instagram.com/ontarioline)

Visit the website:

[www.metrolinx.com/ontarioline](http://www.metrolinx.com/ontarioline)

**Visit our community offices:**

**770 Queen Street East (near Queen & Broadview)**

General hours:

Mondays, Tuesdays, and Fridays: 9:00 a.m. to 5:00 p.m.

Wednesdays: 1:00 p.m. to 6:00 p.m.

Thursdays: 10:00 a.m. to 6:00 p.m.

**Thornccliffe Park:**

East York Town Centre

45 Overlea Blvd., Toronto, ON M4H 1C3

Unit 153 (across from the Rogers store)

General hours:

Monday to Friday, 9 a.m. to 5 p.m.