

# UPDATE: Preparation and start of excavation at Osgoode south site

## Hours of work:

- Preparation activities: Weekdays from 7:00 a.m. to 11:00 p.m., September to mid-January 2025 with **additional overnight shifts from early December**
- **Phase 1 excavation works: Weekdays, 24-hours, as early as late 2024 to March 2025**

## What is new?

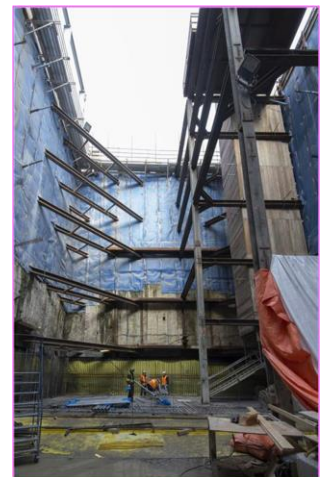
- **As early as the week of December 9, crews will be working extended overnight hours to complete the installation of the exterior cladding for the acoustic shelter at the south site.**
- **This work may require temporary overnight closures of Simcoe Street.**
- **Nearby residents can expect to hear crews installing the exterior cladding materials on the acoustic shelter.**

## What is station excavation?

The support piles needed to stabilize the site have been installed. Now the team will begin to excavate the soil to a depth of 40 m. As soils are removed, a shaft is created to lower materials into the pit for the future Ontario Line station at Osgoode.

## What to expect

- Crews will be preparing for and initiating excavation activities at the Osgoode south site, beginning in late July.
- Work hours will vary during preparation and excavation activities. Additional workdays or hours may be required to allow teams to complete work, such as overnight or Saturday shifts.
- Residents will see cranes, excavators, loaders, and dump trucks on-site during this work.
- Increased truck traffic will enter and leave worksites daily, following specified routes (refer to graphic on next page).
- To reduce impacts to residents and businesses in the area, mitigations are in place including air quality, noise, and vibration monitoring, as well as site hoarding and mud mats for dust suppression. An acoustic shelter will also be installed over the South site to assist in minimizing noise.



## Preparation activities at the South site

### Mid-July to mid-January 2024

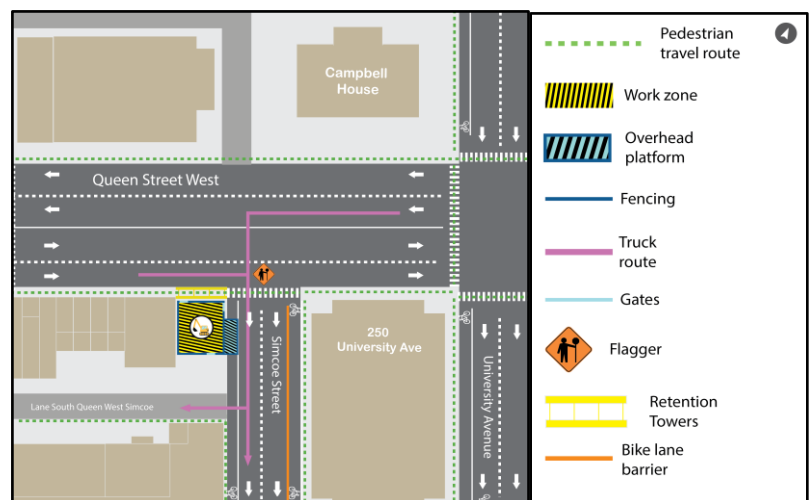
- Crews will be preparing the site for excavation by installing an overhead crane and acoustic shelter over the excavation shaft at the south station site.
- The acoustic shelter will cover the shaft excavation for the future Osgoode Station. The shelter structure will reduce noise and minimize dirt and dust from the work site, while allowing crews to work extended hours, year-round without being affected by the weather.

- Crews will also deliver and install an overhead crane to the site. The overhead crane will be assembled using a smaller mobile crane.
- Upon completion, the crane will be used for excavation activities, and will be housed within the acoustic shelter. This type of crane can move back and forth on girders (i.e. metal supports) within the construction site, allowing it to load materials and deliver them to precise locations within the station site at that location.
- Delivery and installation of the acoustic shelter and crane may occur outside of typical work hours due to its size and may require temporary lane closures on Simcoe Street. More information will be shared as it becomes available.
- Traffic control persons will be deployed to safely guide the oversize delivery.
- **Crews will be working additional overnight hours to complete the preparation, including installation of the exterior cladding of the acoustic shelter. The cladding is expected to be installed as early as the week of December 9 and may require temporary overnight closures on Simcoe Street.**

## Excavation at the South Site

### Phase 1: Late-Fall 2024 to March 2025

- Crews will begin to excavate the soil to a depth of 40 m. As soils are removed a shaft is created to lower materials into the pit for the future Ontario Line station at Osgoode.
- Excavation works are expected to start in late-Fall 2024, following completion of the preparation works. Phase 1 is expected to be complete in **March 2025**.
- Communities will see increased truck traffic entering and leaving the worksite daily, following a specified route.
- This work is expected to take place Monday through Friday on a 24-hour shift. An acoustic shelter will be in place to minimize impact to the community.



## About the Ontario Line

- 15.6-kilometre subway line that will make it faster and easier to travel within Toronto and beyond.
- 15 stops and more than 40 connections to other transit, including GO train, subway, LRT, streetcar, and bus lines.
- Less than 30 minutes from one end of the line to the other.
- 28,000 fewer cars on the road each day.

#### Contact us:

Call us 24/7 at: [416-202-5100](tel:416-202-5100)

Write to us at: [ontarioline@metrolinx.com](mailto:ontarioline@metrolinx.com)

Find us on X, Facebook, and Instagram:

[@ontarioline](https://www.instagram.com/ontarioline)

Visit the website:

[www.metrolinx.com/ontarioline](http://www.metrolinx.com/ontarioline)

#### Visit our community offices:

**770 Queen Street East (near Queen & Broadview)**

General hours:

Mondays, Tuesdays, and Fridays: 9:00 a.m. to 5:00 p.m.

Wednesday: 1:00 p.m. to 6:00 p.m.

Thursday: 10:00 a.m. to 6:00 p.m.

#### Thorncleve Park:

East York Town Centre

45 Overlea Blvd., Toronto, ON M4H 1C3

Unit 153 (across from the Rogers store)

General hours:

Monday - Friday, 9 a.m. - 5 p.m.

Disponible en français sur demande. Si vous êtes intéressé, veuillez envoyer un courriel à [OntarioLine@metrolinx.com](mailto:OntarioLine@metrolinx.com)