

Station excavation and cavern work at Queen-Spadina

Expected start date: December 2024

Hours of work: 24-hour shifts (Monday - Saturday)

Expected Completion: Early 2026

What is cavern excavation?

As a major milestone of progress at the future Ontario Line Queen-Spadina subway station, the vertical excavation at the north shaft is complete. The next phase of excavation will begin in December 2024 and continue into early 2026.

Crews will connect the newly completed station shaft to the future station platform area and excavate in a southwest direction away from the northeast corner of Queen Street and Spadina Avenue.

This cavern also creates space for the future tunnelling machines to pass through as they create the Ontario Line subway tunnels through downtown Toronto.

What to expect

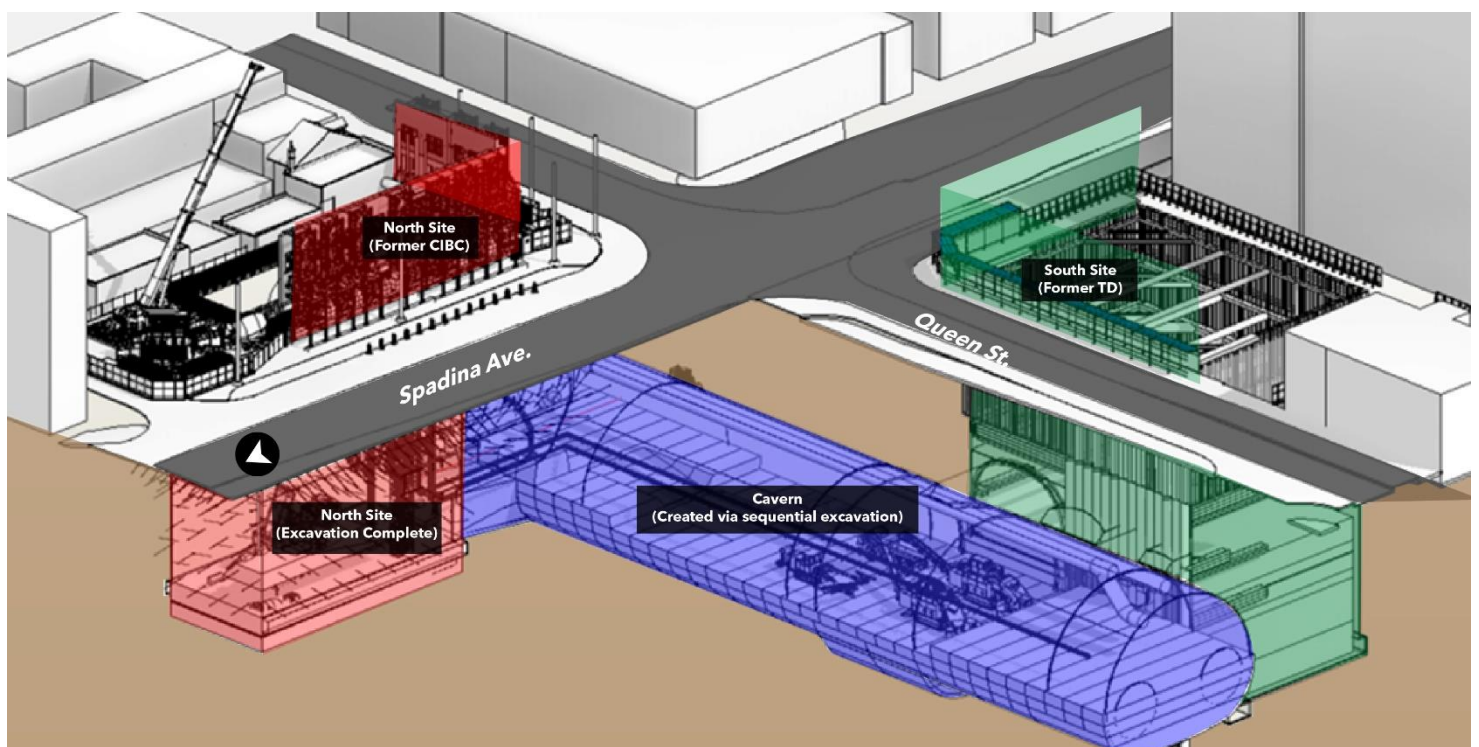


Diagram of the Queen-Spadina cavern Location.

- Crews will deliver specialized machinery into the excavated shaft at the north site where it will be assembled and operated. The machines will use a technique known as sequential excavation to perform a type of deep underground mining excavation.

- The excavation of the cavern is an essential step in creating a new space for the station subway platform.
- Rock spoils will be raised out of the excavated shaft and transported away using dump trucks, following specified trucking routes. Traffic control persons will guide trucks, traffic, pedestrians and cyclists as needed, as vehicles enter and exit the sites.
- Due to the mining nature of the work, crews will work on a 24-hour rotation to excavate the station cavern, Monday to Saturday. Occasional additional shifts may be required. This continuous methodology keeps crews safe and ensures support for the excavation. A piece of equipment called a roadheader will rotate a specialized attachment to “shave” material underground. Noise and vibration from the equipment will be monitored continuously as the machine moves away from the site.
- To reduce impacts to residents and businesses in the area, mitigations are in place including air quality, noise, and vibration monitoring, site hoarding, additional paved areas, sprinkler systems, and mud mats for dust suppression.

About the Ontario Line

- 15.6-kilometre subway line that will make it faster and easier to travel within Toronto and beyond.
- 15 stops and more than 40 connections to other transit, including GO train, subway, LRT, streetcar, and bus lines.
- Less than 30 minutes from one end of the line to the other.
- 28,000 fewer car trips each day.

Contact us:

Call us 24/7 at: [416-202-5100](tel:416-202-5100)

Write to us at: ontarioline@metrolinx.com

Find us on X, Facebook, and Instagram:

[@ontarioline](#)

Visit the website:

www.metrolinx.com/ontarioline

Visit our community offices:

770 Queen Street East (near Queen & Broadview)

General hours:

Mondays, Tuesdays, and Fridays: 9:00 a.m. to 5:00 p.m.

Wednesdays: 1:00 p.m. to 6:00 p.m.

Thursdays: 10:00 a.m. to 6:00 p.m.

Thornccliffe Park:

East York Town Centre

45 Overlea Blvd., Toronto, ON M4H 1C3

Unit 153 (across from the Rogers store)

General hours:

Monday – Friday, 9 a.m. – 5 p.m.