

GO Expansion

Kitchener Fourth Track and Bloor Station (TTC Connection) Construction Liaison Committee

Thursday, December 12, 2024

 **METROLINX**



AGENDA

- Land Acknowledgment
- Safety Moment
- GO Expansion Overview
- Kitchener Fourth Track
 - Project Overview
 - Project Timeline
 - Work Progress
 - What To Expect Next
- Bloor TTC Connection
 - Project Overview
 - Project Timeline
 - Work Progress
 - What To Expect Next
- Committee Discussion
- Community Engagement

LAND ACKNOWLEDGEMENT

Metrolinx acknowledges that we connect communities by building and operating transit within the traditional lands of the Anishinaabe, the Haudenosaunee and the Huron-Wendat peoples, for whom these lands continue to have great importance.

Treaties between First Nations and governments cover these lands, and the promises contained in these Treaties remain relevant to this day.

Metrolinx and its employees are committed to understanding the history of these lands and the continued impacts of colonization and take responsibility for actions to advance reconciliation.

Metrolinx will continue to seek the knowledge, expertise and experience of Indigenous partners and commits to doing business in a manner that is built on a foundation of trust, respect and collaboration.



Safety Moment

GO Expansion Overview

The GO Expansion program will provide a range of improvements across the GTHA:

More all-day service



Service in both directions



Capacity for trains every 15 minutes or better



Faster and more efficient fleet



More accessible stations



An expanded Union Station



Over 10,000 weekly trips from 3500 weekly trips in 2019

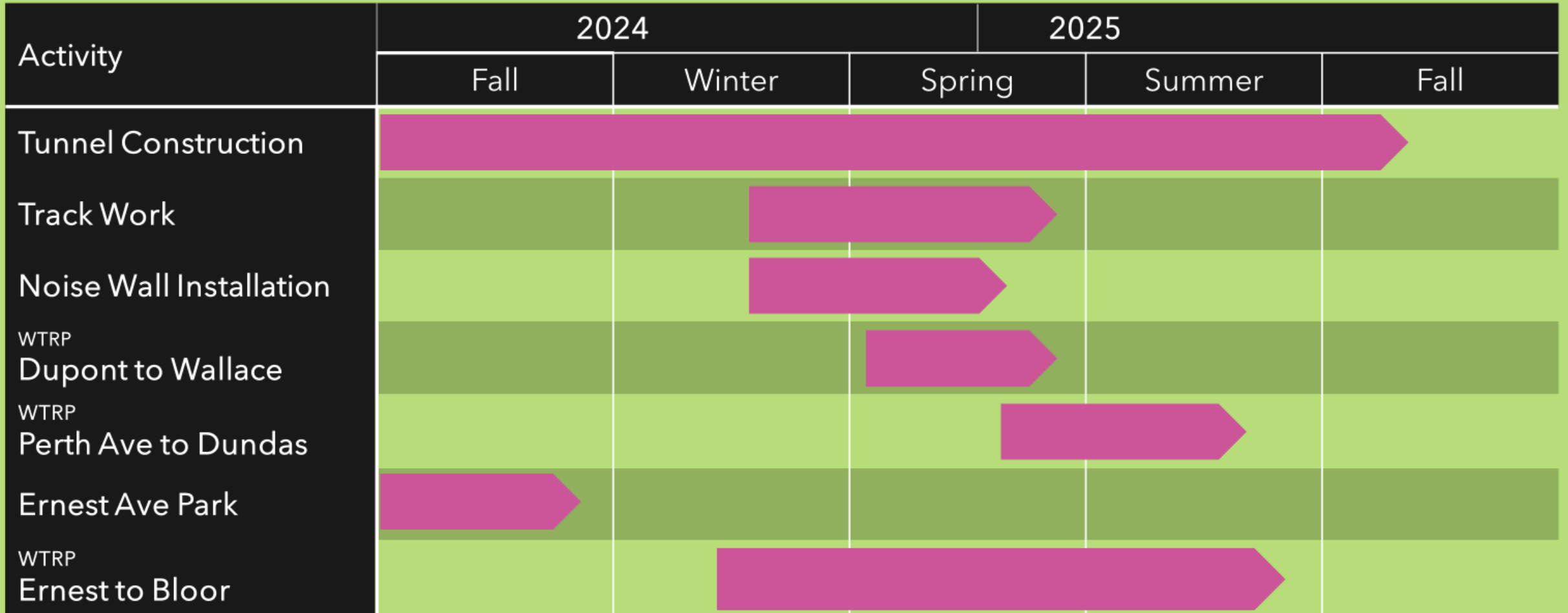
New trains will reach speeds of 140km/h between stations, making the GO Train faster than taking a car in virtually every instance

Improvements to stations access and boarding and alighting

Capacity for train and passenger movements for the rest of the century

Kitchener Fourth Track Project Overview

PROJECT TIMELINE



This timeline may be subject to change due to weather or unforeseen circumstances

COMPLETED

Vine Wall Cable Mesh

- Between Ernest and Wallace Avenues

Decorative Metal Fence



IN PROGRESS

Bloor GO Station

- Formwork and concrete pour for connection to existing tunnel
- Micropile Installation for Track Slabs



WHAT TO EXPECT NEXT

Bloor GO Station

- Connection to existing tunnel
- Removal of temporary shoring
- Waterproofing
- Pavilion Structural Steel



Bloor TTC Connection Project Overview

PROJECT TIMELINE

Activity	2024	2025				2026	
	Fall	Winter	Spring	Summer	Fall	Winter	Spring
New Pedestrian Box Structure	▶						
Crossway Building works	▶						
TTC Station Works		▶					

This timeline may be subject to change due to weather or unforeseen circumstances

IN PROGRESS

Jet Grouting

- Jet Grouting at the Pedestrian Box structure



IN PROGRESS

Preparation for Winter

- Installed heat tracing along hose lines within the corridor to avoid water freezing.

Forming in Staircase B

- Installed forms within staircase B in preparation of concrete pour.



IN PROGRESS

Generator Pad Install at Bloor GO Station

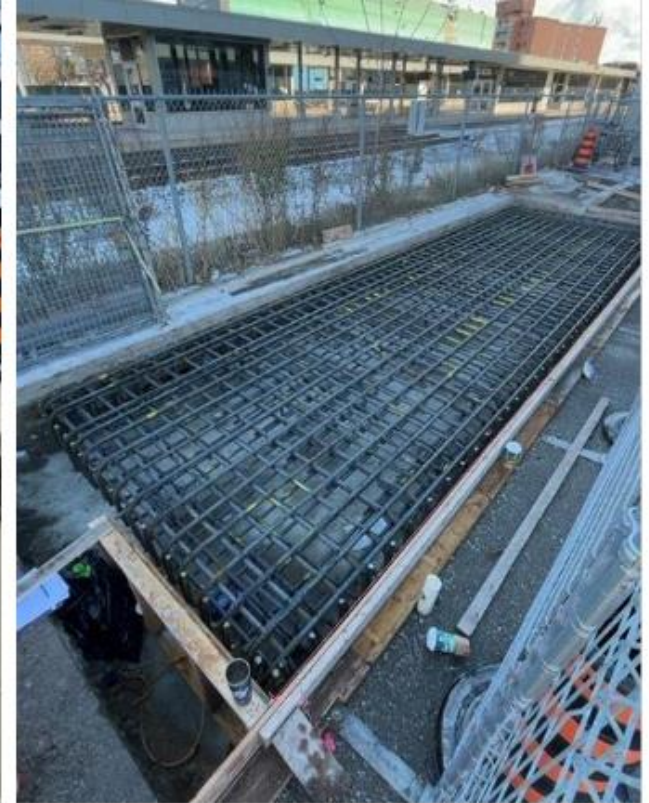
- Poured concrete mud mat and installed rebar for the generator pad.

Work Schedule

- Generator pad is scheduled to occur during the day, Monday to Friday, from 7 a.m. to 4 p.m.

Community Impacts

- There will be some noise impact to the businesses close to the work area.
- Access to the kiss and ride will not be impacted, traffic control will be implemented and proper signage will be displayed for the duration of the work.



WHAT TO EXPECT NEXT

Pedestrian Box Structure Construction

- Excavation
- Waterproofing

Work Schedule

- Work scheduled to occur overnight from Sunday to Thursday, from 8 p.m. to 5 a.m. (Five nights per week).

Community Impacts: Noise, Dust and Light.

- Noise and air monitors have been installed around the project area to ensure that the project requirements are met. Any exceedances will be flagged and mitigated, wherever possible.



WHAT TO EXPECT NEXT

Jet Grouting within P2 Level

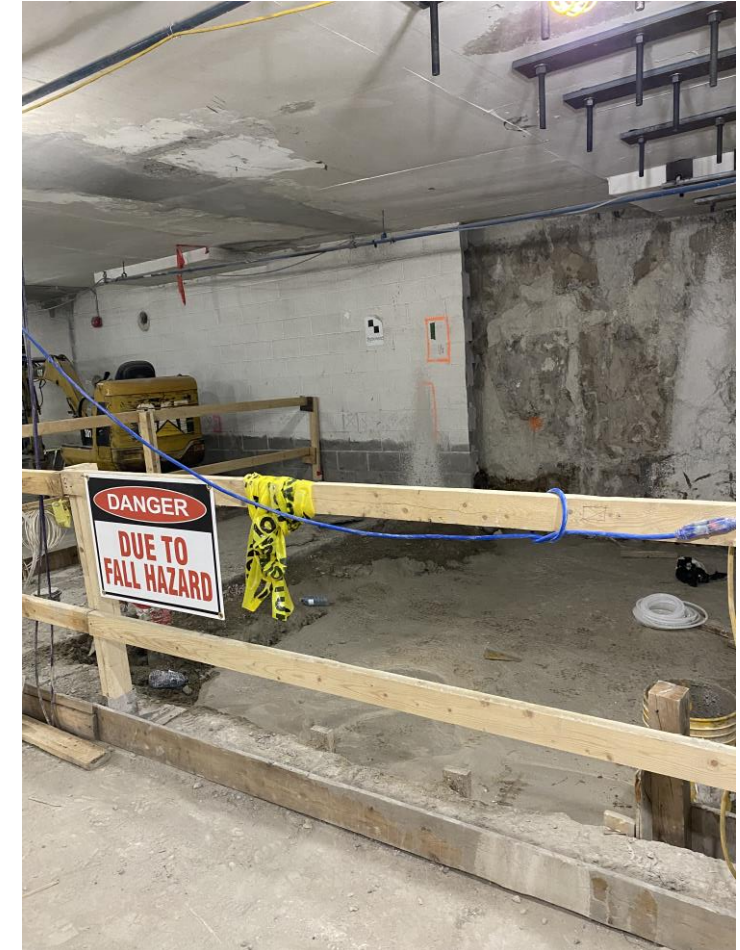
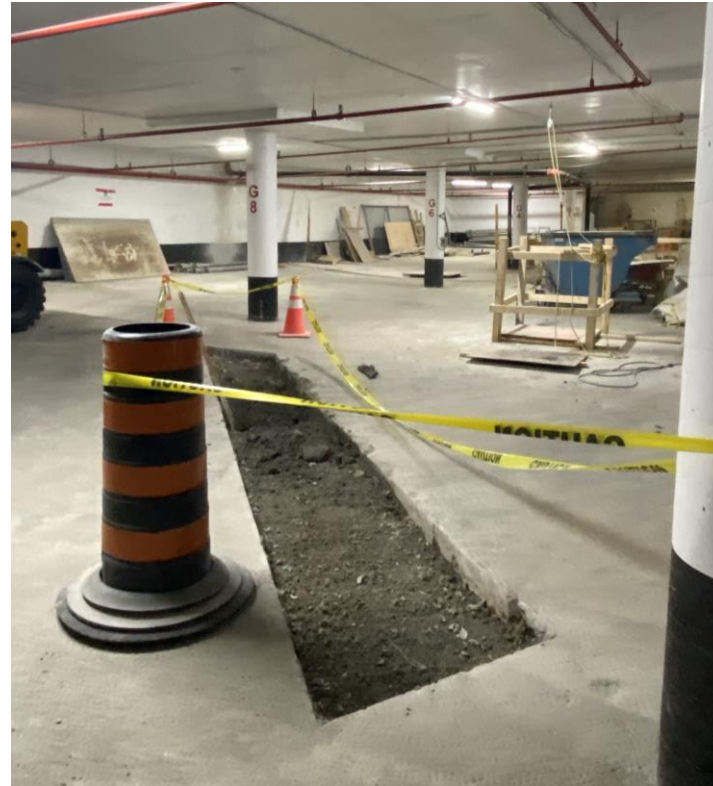
- Staircase B and C
- Elevators 1 and 2

Work Schedule

- Jet Grouting is scheduled to occur during the day, Monday to Friday, from 7 a.m. to 4 p.m.

Community Impacts:

- All work will be contained within the the hoarded area.
- There will be some noise impact within the underground parking, close to the work area



Committee Discussion

COMMUNITY ENGAGEMENT

Updates will be communicated to the community via:

- Canada Post Mail Drops
- Bi-weekly Toronto West e-newsletter
- Project Website (metrolinx.com/kitchener)
- Monthly Construction Liaison Committee (CLC) meeting
- Upcoming Virtual and In-Person Public Meetings
- Upcoming Community Pop-ups
- Toronto West Phone Number: 416-202-6911
- Toronto West email: TorontoWest@metrolinx.com
- X: @GOExpansion
- Metrolinx Engage

Cette présentation est disponible en français sur demande. Si vous êtes intéressé, veuillez envoyer un courriel à TorontoWest@metrolinx.com

