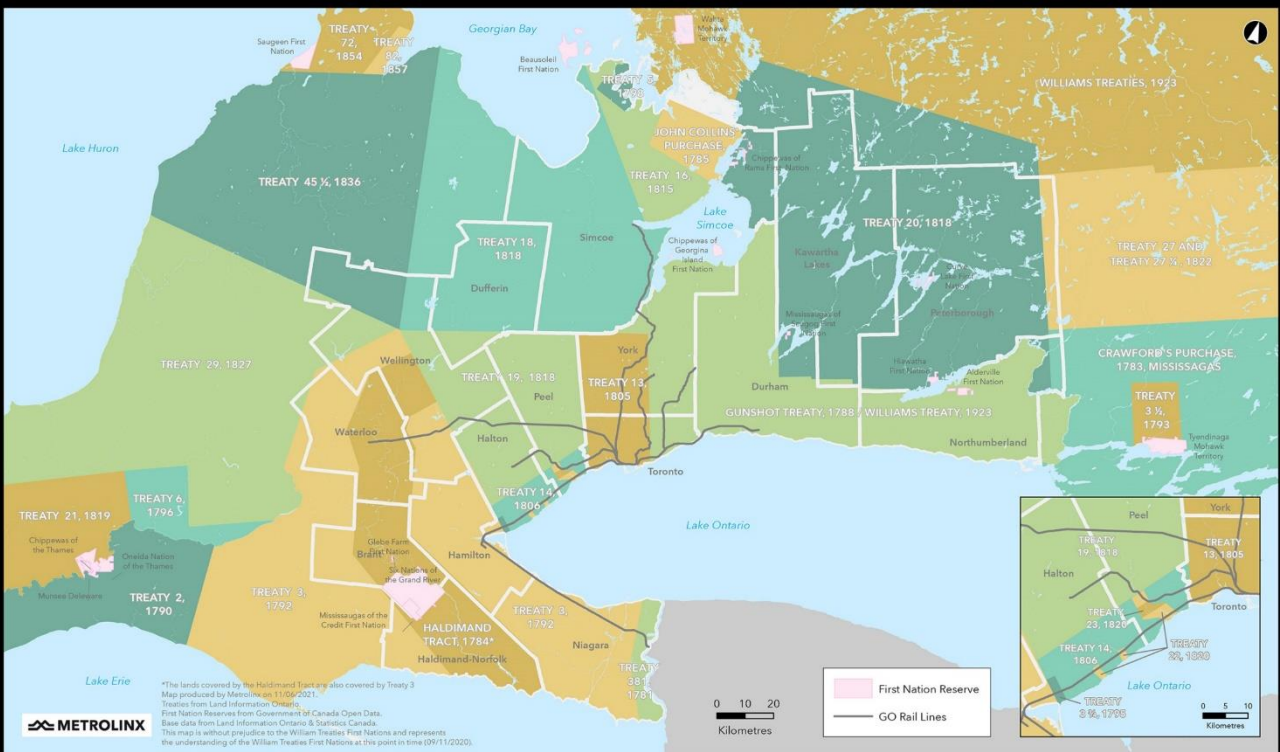


Land Acknowledgement

Treaties and Reserves in the Greater Golden Horseshoe



Let us take a moment to acknowledge we are on lands that have been, and continue to be, home to many Indigenous Peoples including the Anishnabeg, the Haudenosaunee and the Huron-Wendat peoples.

We are all Treaty people. Many of us have come here as settlers, as immigrants or involuntarily as part of the trans-Atlantic slave trade, in this generation, or generations past.

We acknowledge the historic and continued impacts of colonization and the need to work towards meaningful reconciliation with the original caretakers of this land.

We acknowledge that Metrolinx operates on territories and lands covered by many treaties that affirm and value the rights of Indigenous communities, Nations and Peoples.

We understand the importance of working towards reconciliation with the original caretakers of this land. At Metrolinx, we will conduct business in a manner that is built on a foundation of trust, respect and collaboration.

Ontario Line

Construction Liaison Committee

Pape-Danforth & Sammon

December 4, 2024

AGENDA

1. Ongoing Work

- Pape Station support of excavation
- Sammon EEB support of excavation

2. Upcoming Work

- Sammon EEB excavation
- Gertrude jet grouting
- Eight-week look ahead

3. Site Improvements and Issue Mitigations

- Generator demobilization and temporary power
- Wet sweeper truck schedules and routes
- Transition to winter work

4. Noise and Air Quality Data

- October noise exceedances

5. Action Log

6. Discussion

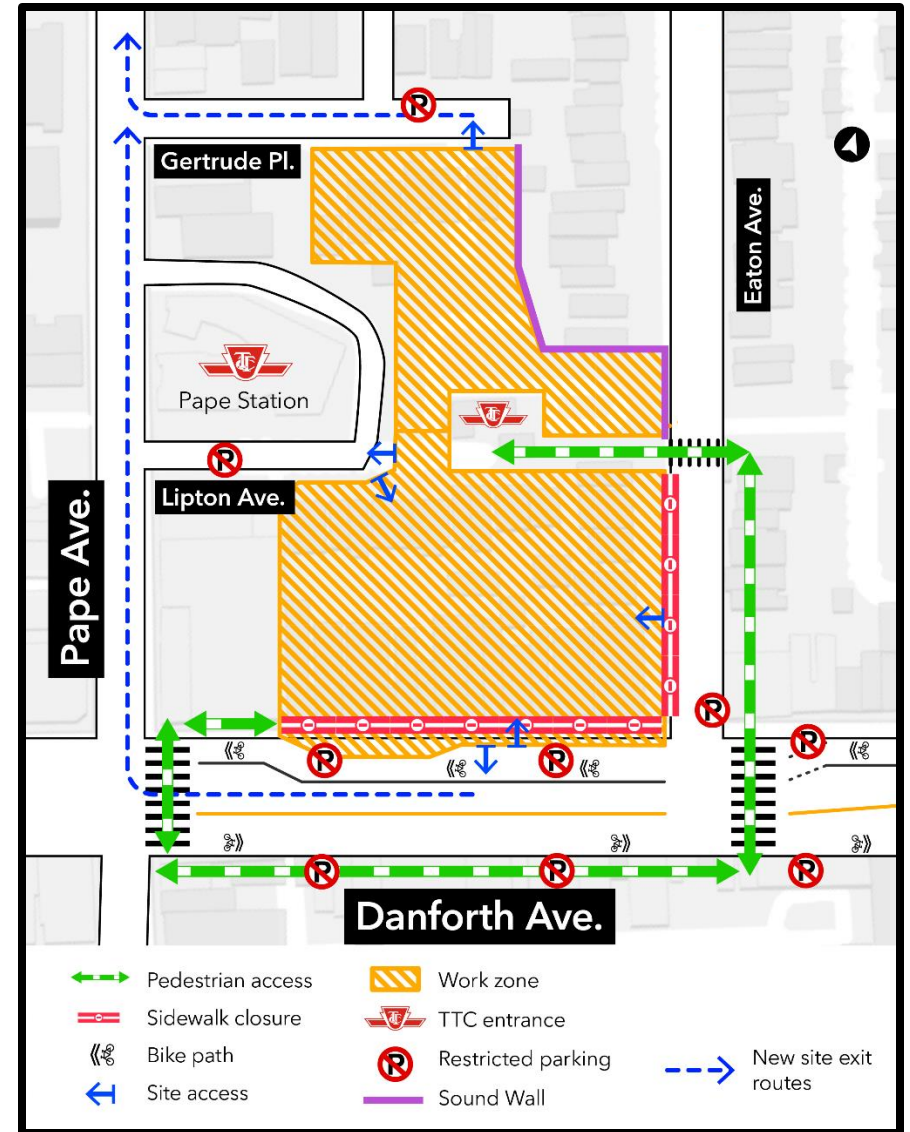
Ongoing Work

Support of Excavation – Pape Station

- Construction on the underground concrete support walls (slurry walls) for the future Ontario Line interchange at Pape Station.
- Sidewalk and traffic detours, parking restrictions, and temporary crosswalks are in place to accommodate construction and allow for safe navigation around the site.
- Extended work hours are required to accommodate the time concrete needs to dry. This keeps the work safe by establishing trench stability.
- Support of excavation for Pape Station is currently scheduled to be completed in early spring 2025.
- Following support of excavation, bulk excavation will begin. More details will be shared about Pape Station excavation at a future meeting.

Hours of work:

- Monday – Friday – 24 hours
- Saturdays from 6 a.m. – 7 p.m.



Pape-Danforth Slurry Wall Installation Progress

South shaft slurry walls

- Installation of the south slurry wall is 63% complete.
- Crews have excavated about 355,948 cubic metres of soil
- Over 11,820 cubic metres of concrete poured

37

Panels installed

21

Panels remaining



North shaft slurry walls

- Installation of the north slurry wall is 40% complete.
- Crews have excavated about 236,304 cubic metres of soil
- Over 7,529 cubic metres of concrete poured

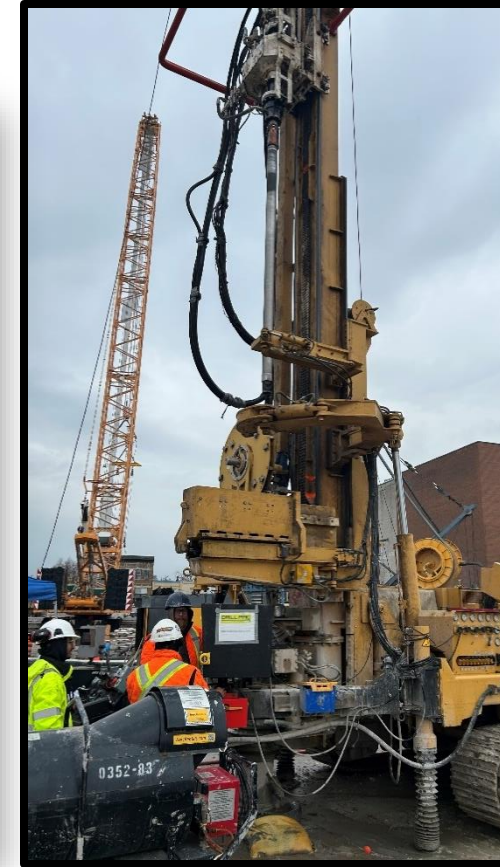
20

Panels installed

30

Panels remaining

Pape Support of Excavation – Danforth Avenue



Lifting a rebar cage before inserting into excavated panel

Overview of the Pape site

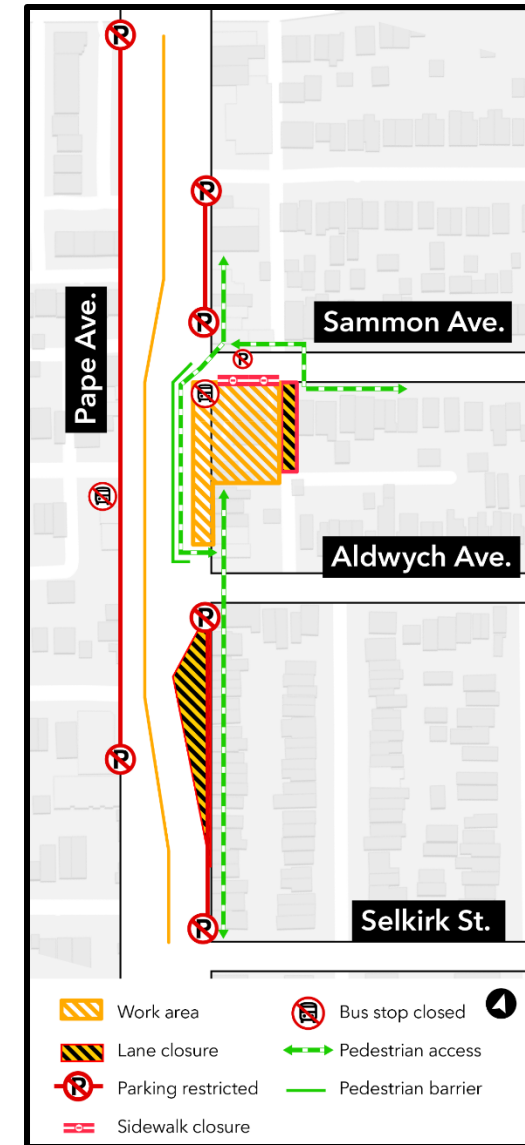
Drilling jet grout columns

Support of Excavation – Sammon EEB

- Construction of the underground concrete support walls (known as support of excavation) for the future Ontario Line emergency exit building (EEB) at Sammon Avenue is ongoing.
- Sidewalk and traffic detours, as well as parking restrictions are in place to accommodate construction and allow for safe navigation around the site.
- Extended work hours are required to accommodate the time concrete needs to dry. This keeps the work safe by establishing trench stability.
- Support of excavation for the Sammon EEB is currently scheduled for completion by early 2025.
- Following support of excavation, bulk excavation will begin. More details are available on an upcoming slide.

Hours of work:

- Monday – Friday – 24 hours
- Saturdays from 6 a.m. – 7 p.m.



Sammon Slurry Wall progress

- Installation of the Sammon slurry wall is 78% complete.
- Crews have excavated about 201,502 cubic metres of soil
- Over 6,324 cubic metres of concrete poured

22

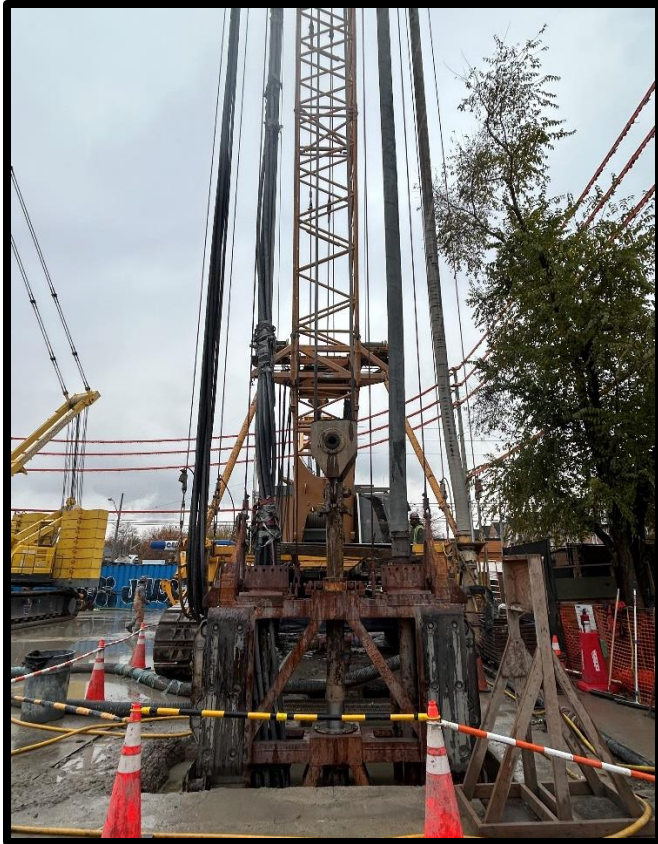
Panels installed

6

Panels remaining



Pape Support of Excavation – Sammon Avenue



Excavating with the hydromill



Pouring concrete



Excavating with the hydromill

Upcoming Work

Bulk Excavation at Sammon Avenue

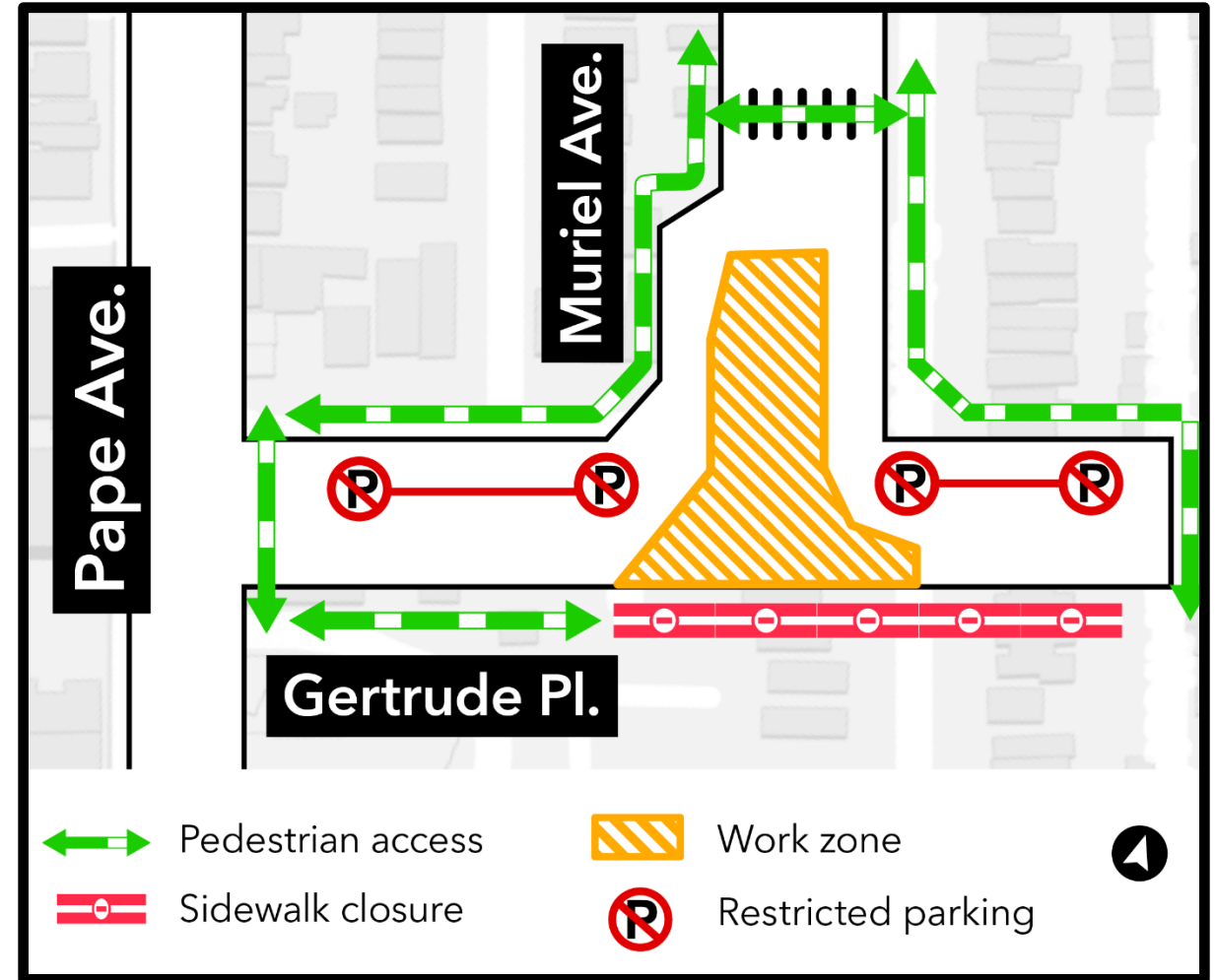
- Upon completion of slurry wall installation, crews will begin to excavate within the foundation box formed by the slurry walls.
- Approximately 30 trucks per day will be leaving the site to haul excavated material.
- All staging will be done within the existing site footprint.
- Truck haul routes will be on Pape Avenue from the site to O'Connor Drive, for both inbound and outbound trucks.

Hours of work:

- Excavation until Summer 2025
- Monday - Friday over 24 hours, if required
- Saturdays from 6 a.m. - 7 p.m.

Gertrude Jet Grouting Works (January 2025)

- Jet grouting work will begin in early January 2025 on Gertrude Place near Muriel Avenue.
- This work will take place in three stages from Monday to Saturday during the day shift for approximately six months.
- The first stage is expected to take place from December 2024 to May 2025.
- The second stage is expected to take place from May 2025 to June 2025.
- The third stage is expected to take place from June 2025 to July 2025.
- Jet grouting is a soil stabilization technique that involves injecting grout deep into the soil. The grout mixes with the soil and hardens, adding stability underneath existing structures near where excavation work will occur.



Look-Ahead Schedule:

#	Activity	Location	Expected Start	Expected Duration	Impact	Hours of Work	Mitigations
1	Pape slurry wall construction	Pape	June 2024	Spring 2025	Noise	Monday - Friday: 24 hrs Saturday: 6am-7pm	Noise wall Slurry plant enclosure
2	Sammon slurry wall construction	Sammon	June 2024	Dec 2024	Noise	Monday - Friday: 24 hrs Saturday: 6am-7pm	Noise wall
3	Jet grouting	Lipton	June 2024	Dec 2024	Noise	Monday - Friday: 24 hrs Saturday: 6am-7pm	Noise wall
4	Jet grouting	Gertrude	Dec 2024	July 2025	Noise	Monday - Friday: 7am-7pm	Noise wall *Only maintenance will be done on Saturday

- GIP’s hours will remain the same over the holiday season. GIP will not be working on the statutory holidays (December 25, 26 and January 1).
- During the month of December, jet grouting mobilization will start. Drilling for jet grouting columns will begin in January 2025.

Site Improvements and Issue Mitigations

Replacing generators with electrical power

By mid-December, 7 of 9 generators will be removed from the Pape-Danforth site.

Construction Updates:

- Electrification of the Pape-Danforth site is underway.
- Toronto Hydro forecasting to have the transformer energized by December 5.
- Following Toronto Hydro works, generators will be removed from site and replaced with electrical power source.

This will replace:

7
Generators

- Across the Pape-Danforth site

Remaining at Pape-Danforth:

2
Generators

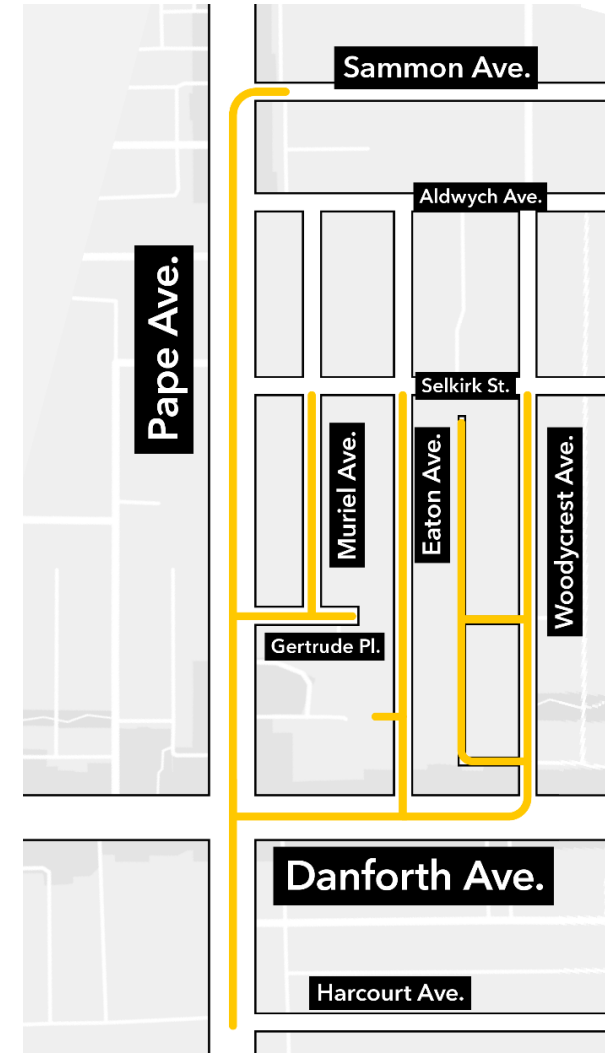
- Powering the slurry plant (to be removed in April 2025)

Sammon Generator Update: The generator at the Sammon EEB site will be removed by the end of the year.

Sweeper Truck Shifts and Route

- As requested in the previous CLC meeting, the sweeper truck night shift was cancelled.
- The route the sweeper truck takes is shown in the image on the right. The route has been updated as requested in the last CLC meeting to streets and lanes east to Woodycrest Ave.
- The sweeper truck works Monday-Friday and when required on Saturday.
- With winter approaching, sweeper truck activity will be reduced to occur only after concrete pours.

Day Shift: 12pm-7pm:



— Sweeper route (day)



Transition to Winter Work

- In the winter, diesel exhaust is more visible.
- Enclosures have been added around the plants on site to reduce noise and improve winter working conditions.
- GIP will remove snow from required sidewalks around the site as per agreement with the City.

Enclosure around water treatment plant:



Enclosure around slurry plant:



Noise Exceedance Data

Registered Exceedances at Noise Receptors: November 2024

No	Day/Time of Exceedances	Detail	Location	Source	Corrective Action	Complaint Received (Y/N)
1	Saturday, November 2 - morning	Noise	Gertrude Pl	Slurry Wall Milling Operations	Note 1 : Contractor investigated and confirmed exceedances were minor. Contractor continued to monitor while works continued	N
2	Wednesday, November 6 - morning and late evening	Noise	Danforth Ave	Slurry Wall Milling Operations	Note 1	N
3	Saturday, November 9 – early morning	Noise	Eaton Ave, Gertrude Pl and Danforth Ave	Slurry Wall Milling Operations	Note 1	N
4	Saturday, November 16 - early morning	Noise	Eaton Ave, Gertrude Pl and Danforth Ave	Slurry Wall Milling Operations	Note 1	N
5	Monday, November 18 – early morning and late evening	Noise	Danforth Ave	Slurry Wall Milling Operations	Note 1	N
6	Tuesday, November 19 – early morning and late evening	Noise	Danforth Ave	Slurry Wall Milling Operations	Note 1	N
7	Thursday, November 21 – early morning	Noise	Eaton Ave and Danforth Ave	Slurry Wall Milling Operations	Note 1	N
8	Thursday, November 28 - morning	Noise	Eaton Ave and Danforth Ave	Slurry Wall Milling Operations	Note 1	N

Action Log

Action Log

#	Questions Asked / Action Item	Response/Resolution	Due Date / Status
1	Green Infrastructure Partners will arrange for an extended sweeper truck route beyond Eaton.	The route has been extended (see slide 17).	Response provided
2	Metrolinx will update the CLC membership about the parking replacement strategy.	Further updates on the parking replacement will be provided at the next CLC. This is still in progress.	Jan 8
3	Metrolinx will provide further details and an update on the water main break investigation.	<p>The investigation concluded that this watermain break was not related to Ontario Line construction, but instead with a faulty hydrant.</p> <p>Toronto Water was on site on Saturday Nov 30 to perform additional repairs on the hydrant, resulting in a temporary shutoff to Eaton residents.</p> <p>Any individual concerns should be brought to the Ontario Line Community Engagement team.</p>	Response provided
4	Metrolinx will explore car and window cleaning for residents in the area.	Metrolinx is able to provide car wash vouchers on an ad hoc basis. Residential window washing is still being explored.	Response provided

Action Log

#	Questions Asked / Action Item	Response/Resolution	Due Date / Status
5	Metrolinx will schedule a meeting with Gertrude/Muriel residents to discuss concerns regarding noise, dust, and parking concerns.	There is a meeting scheduled for December 9 as requested by some community members. We will update CLC members on concerns and responses at the next CLC.	Response provided
6	Metrolinx will provide more details regarding the relationship between, and responsibilities required of, the private developers and Metrolinx.	Metrolinx works with nearby private development to ensure that there impacts are mitigated related to any Metrolinx Ontario Line construction.	Response provided
7	Metrolinx will add the pedestrian crossover as an agenda item to discuss at a later meeting with the Greektown BIA.	<p>The addition of this item will need to be added to future meetings with the BIAs in the area.</p> <p>Pedestrian crosswalk infrastructure is being installed and will be finished by tomorrow (December 5).</p>	Response provided
8	Metrolinx will explore an in-person or hybrid approach for the next CLC meeting.	Metrolinx is looking into meeting venues for an in-person meeting in January and we will stay in touch on what is possible.	



Discussion

