

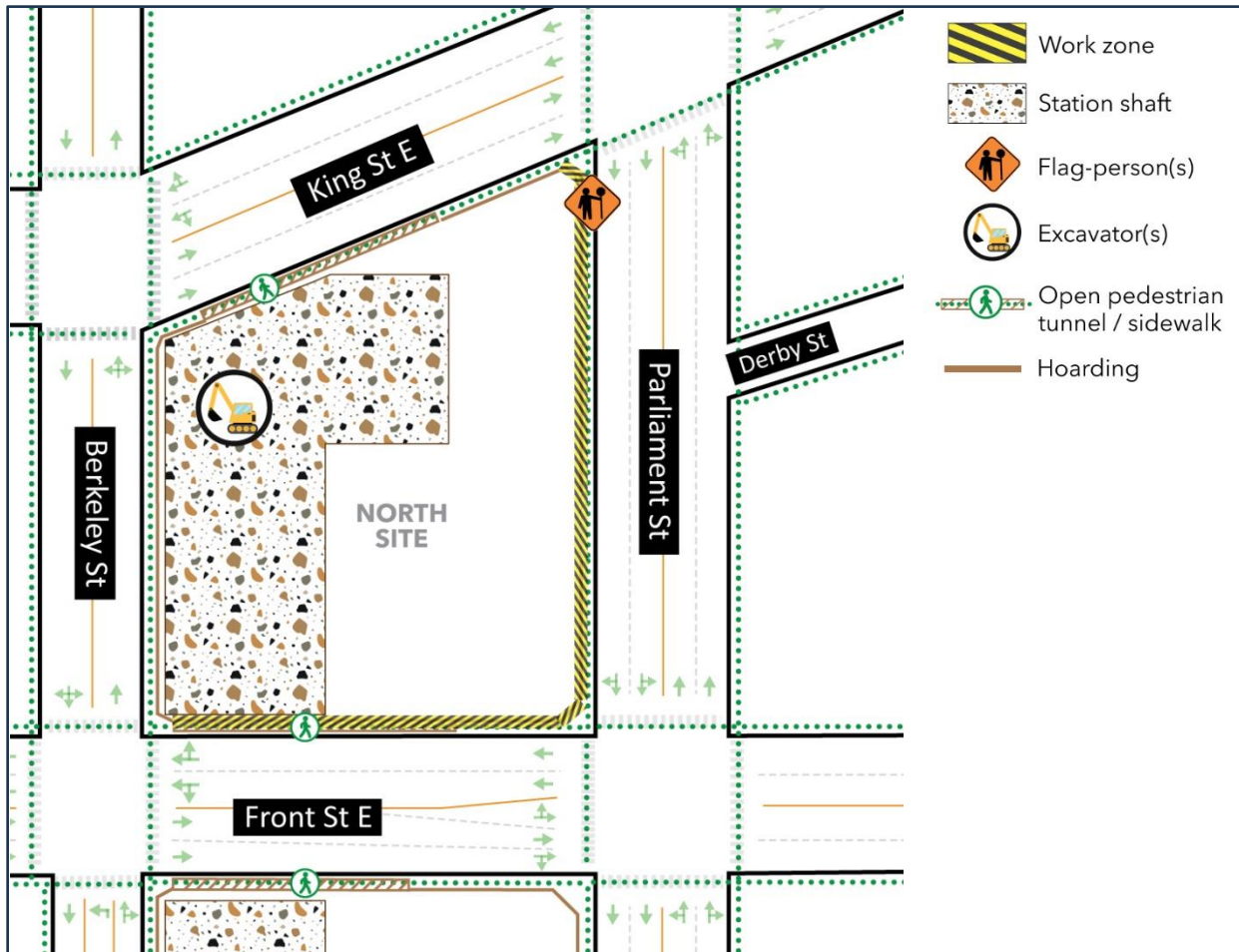
Project signage panel installation at the Corktown north site

Expected start date: As early as December 18, 2024

Expected end date: Up to 30 days

Hours of work: Weekdays (Monday to Friday) from 7:00 a.m. to 7:00 p.m.

Map of work area:



What is happening?

- Ontario Line project signage panels will be installed on the north site's hoarding around the perimeter of the construction zone.
- **Community art will be installed at the south site following a public call for artist submissions planned for early 2025.**
- To ensure that the public is protected during the north site signage installation, a rolling closure of the sidewalk is required starting at King Street East and Parliament Street and moving south down Parliament Street and then west on Front Street East.
- Work will begin as early as Wednesday, December 18, 2024, and is expected to take up to 30 days to complete.

What to expect

- Work will take place during the daytime (weekdays) between 7:00 a.m. and 7:00 p.m. from Monday to Friday.
- Crews are expected to be on-site prior to 7:00 a.m. to set-up equipment.
- Additional working hours, including occasional Saturday shifts, may be required.
- Installation at site is not expected between December 24, 2024, through to January 1, 2025.
- During this work, crews will implement a partial rolling closure of the sidewalk to ensure the safe passage of pedestrians while signage is installed. Work is expected to begin with a partial rolling closure of the south sidewalk on King Street East at Parliament Street, followed by a partial rolling closure of the west sidewalk on Parliament Street, and moving west, partial rolling closure of the north sidewalk on Front Street East.
- Flag-persons will be present to assist pedestrians where sidewalk closures are in effect.
- Safety barriers will be used to separate pedestrians from the work zones.
- No impacts are expected to the two-way traffic on all surrounding streets.
- Clear signage will be posted for transit riders, pedestrians and motorists.
- Crews will take measures to minimize noise impacts wherever possible.
- Equipment will be cleared after every shift.
- Work may be postponed or rescheduled due to unforeseen circumstances.
- For more information about upcoming station work please see metrolinx.com/Ontarioline or sign-up for the e-newsletter.

About the Ontario Line

- 15.6-kilometre subway line that will make it faster and easier to travel within Toronto and beyond.
- 15 stops and more than 40 connections to other transit, including GO train, subway, LRT, streetcar and bus lines.
- Less than 30 minutes from one end of the line to the other.
- 28,000 fewer car trips each day.

Contact us:

Call us 24/7 at: [416-202-5100](tel:416-202-5100)

Write to us at:

ontarioline@metrolinx.com

Find us on X, Facebook, and

Instagram: [@ontarioline](https://www.instagram.com/ontarioline)

Visit the website:

www.metrolinx.com/ontarioline

Visit our community offices:

770 Queen Street East (near Queen & Broadview)

General hours:

Mondays, Tuesdays, and Fridays: 9:00 a.m. to 5:00 p.m.

Wednesdays: 1:00 p.m. to 6:00 p.m.

Thursdays: 10:00 a.m. to 6:00 p.m.

Thorncliffe Park:

East York Town Centre

45 Overlea Blvd., Toronto, ON M4H 1C3

Unit 153 (across from the Rogers store)

General hours:

Monday – Friday, 9 a.m. – 5 p.m.

Disponibile en français sur demande. Si vous êtes intéressé, veuillez envoyer un courriel à

OntarioLine@metrolinx.com