

Ontario Line

Moss Park Construction Liaison Committee

December 12, 2024

 METROLINX



Agenda

Welcome (5 minutes)

- Introductions
- Land Acknowledgement
- Safety Moment
- Review of Action Items

Presentation (25 minutes)

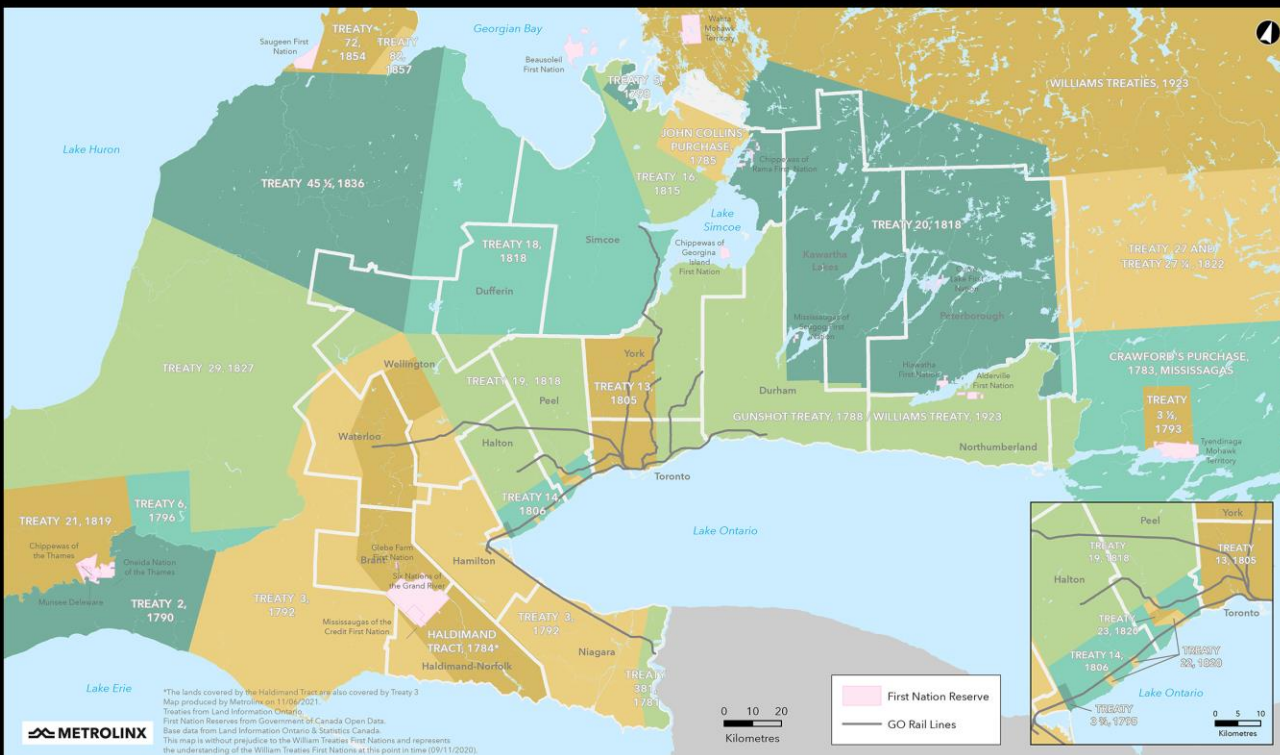
- Construction Updates
- Keeping You Informed

Feedback and Discussion (30 minutes)



Land Acknowledgment

Treaties and Reserves in the Greater Golden Horseshoe



Let us take a moment to acknowledge we are on lands that have been, and continue to be, home to many Indigenous Peoples including the Anishnabeg, the Haudenosaunee and the Huron-Wendat peoples.

We are all Treaty people. Many of us have come here as settlers, as immigrants or involuntarily as part of the trans-Atlantic slave trade, in this generation, or generations past.

We acknowledge the historic and continued impacts of colonization and the need to work towards meaningful reconciliation with the original caretakers of this land.

We acknowledge that Metrolinx operates on territories and lands covered by many treaties that affirm and value the rights of Indigenous communities, Nations and Peoples.

We understand the importance of working towards reconciliation with the original caretakers of this land. At Metrolinx, we will conduct business in a manner that is built on a foundation of trust, respect and collaboration.

Safety Moment – Community Safety Around Construction

Getting Ready for Winter Weather

On the heels of our first snow - winter safety for everyone!

Keep Sidewalks Clear and Accessible

Our team ensures pedestrian pathways around the site remain clear of snow and ice. Please follow posted detour routes for your safety.

Watch for Changing Conditions

Winter weather can make surfaces slippery. Wear proper footwear and stay alert near construction areas.

Maintain Visibility

With shorter daylight hours, lighting is in place. Be mindful of marked crosswalks and pedestrian signals.

Respect Construction Barriers

Barriers are set up to protect you. Avoid cutting through restricted areas for your safety and ours.

Be Patient with Delays

Winter conditions can slow progress.



NOVEMBER CLC ACTION ITEMS - PENDING

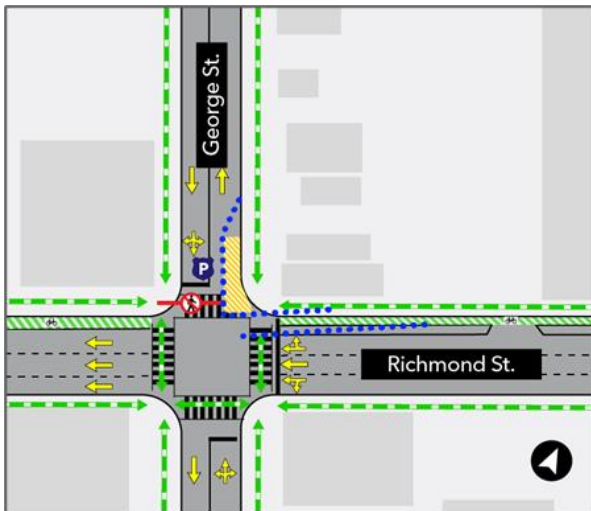
#	ACTION ITEM	RESPONSE	STATUS
1	Metrolinx to provide next steps on the Community Benefits Program Working Group inquiry with Moss Park Coalition.	'Hold the Date' email sent to the Stakeholder Working Group for the meeting on Monday December 16, 2024.	Complete

Construction Update

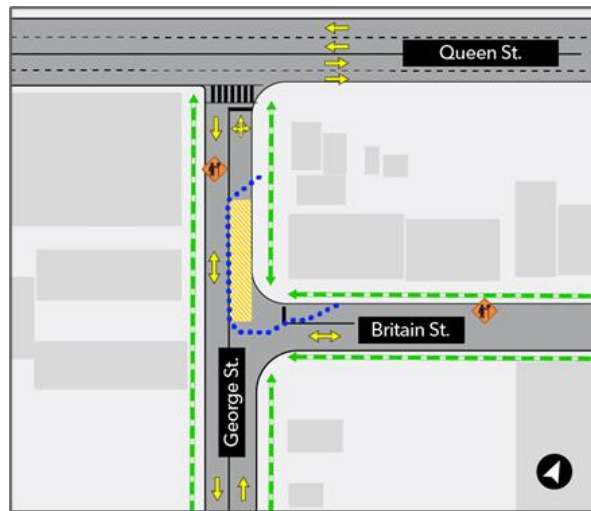
Underground Utility Installation on George Street and Queen Street East

- Toronto Hydro crews have begun work to install underground hydro equipment to provide temporary power to Moss Park during station construction. Work will take place in various locations along **George Street from Richmond Street to Queen Street East**. Once the crew reaches Queen Street East, the hydro ducts will be tunneled under the roadway to reach Moss Park.
- The work began **October 28, 2024**, and is expected to be completed as early as **February 2025**
- Work is expected to take place on **weekdays (Monday-Friday)**, from **7:00 a.m. to 7:00 p.m**

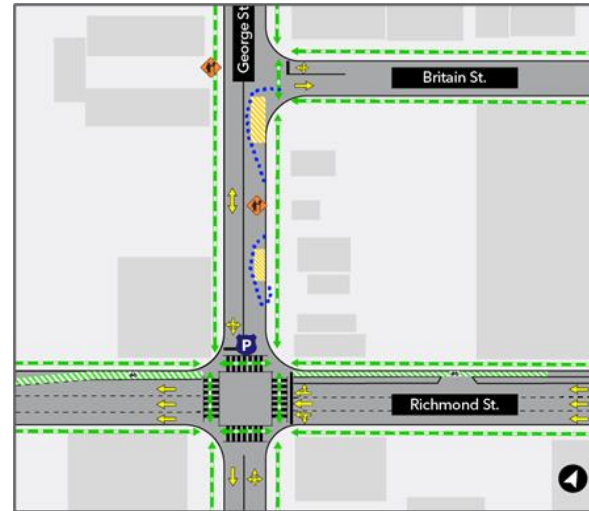
Work area 1: COMPLETE



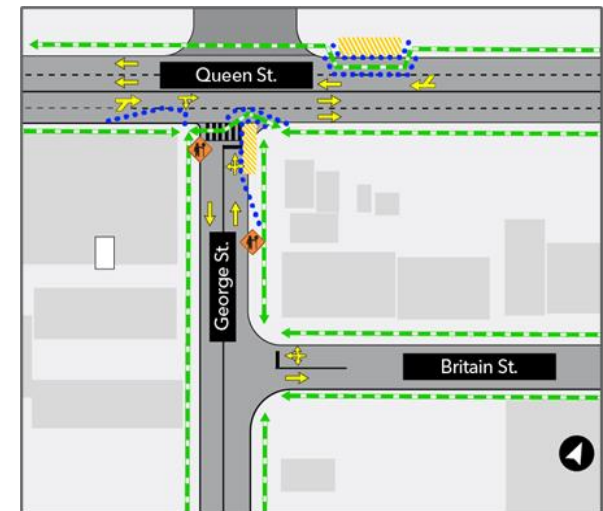
Work area 2: COMPLETE



Work area 3: COMPLETE



Work area 4:



Wall anchors along the south wall (Queen St E)



Current work

- Excavation for future station site continues, with crews working at bedrock level
- Shotcrete application in the rock has commenced
- Rock dowel installation commenced
- Frost protection installation continues
- Demobilization of the bracing subcontractor



Example of shotcrete installation

Current work

- Power substation hydro connection
- Tower crane foundation installation ongoing
- Site maintenance (interior/exterior) ongoing, including maintenance of monitoring devices



Tower crane platform in progress

Bedrock removal ongoing



Upcoming Work

Major construction milestones to propel the Ontario Line subway forward.

	Time		Activity	Details & Purpose
	Winter 2024/ Early Winter 2025		<ul style="list-style-type: none"> • Tower crane installation • Wall anchor installation • Excavation - Phase 2 (bedrock) • Site maintenance (ongoing) 	<ul style="list-style-type: none"> • Crane installation to assist with excavation extractions • Wall anchors to further stabilize the perimeter walls • Excavation of bedrock initiated • Site maintenance works, such as paving and maintenance of monitoring points
	Winter 2025/ Spring 2025		<ul style="list-style-type: none"> • Excavation - Phase 2 (bedrock) • Site maintenance (ongoing) 	<ul style="list-style-type: none"> • Continued excavation of bedrock and maintenance of site

*All dates estimated and subject to change

Three levels of struts and walers at the north wall



Discussion

KEEPING YOU INFORMED

Metrolinx will keep the community, residents and businesses informed by providing project updates, seeking input and feedback, while addressing questions and concerns effectively and quickly.

Next CLC meeting: February 13, 2025

Connect with us:

- Zahrah Munas Community Engagement Advisor
Zahrah.Munas@metrolinx.com
437-328-5354
- Mark Clancy, Senior Manager, Community Engagement
Mark.Clancy@metrolinx.com
647-449-2857
- Ontario Line at OntarioLine@metrolinx.com

Email: OntarioLine@metrolinx.com
Telephone 24/7 @ 416-202-5100

Follow us on social media:

Twitter / Facebook / Instagram: @OntarioLine



*Scan here to sign up for
the new and improved
Ontario Line
e-newsletter*



*Scan here to explore
Ontario Line CLC
materials*

