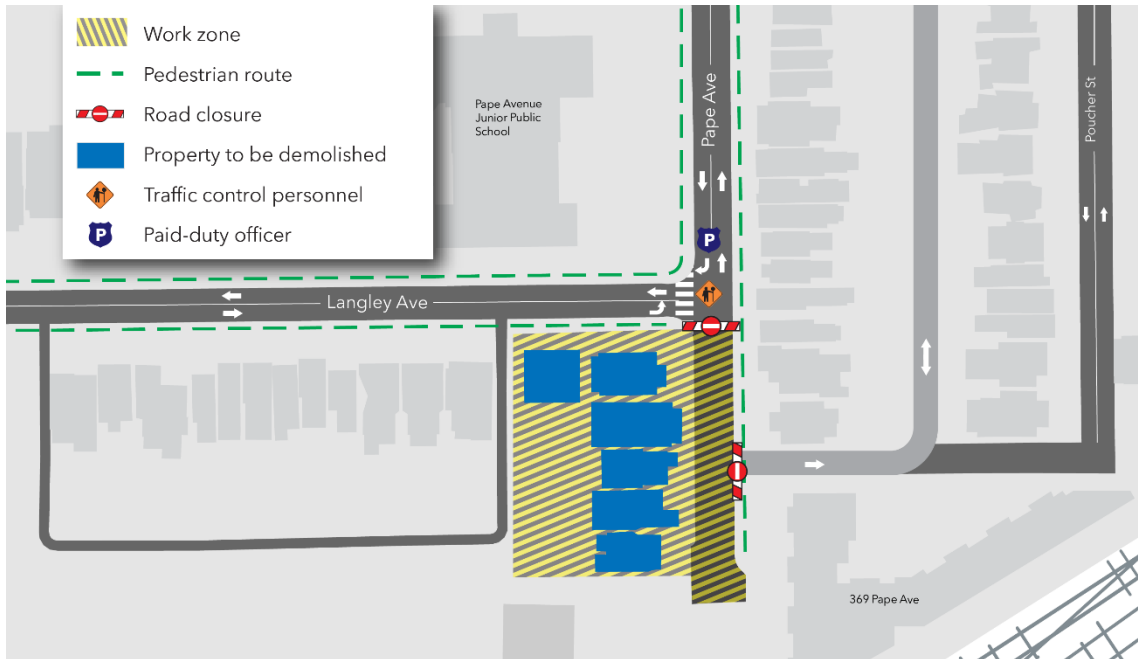


Demolitions of 388 - 402 Pape Avenue and 247 Langley Avenue

Expected start date: January 20, 2025

Expected duration: Ten (10) weeks

Hours of work: Weekdays, 7 a.m. to 7 p.m



What is happening?

- Crews will be demolishing the Metrolinx-owned buildings at 388 - 402 Pape Ave and 247 Langley Ave.
 - On Monday, January 20, crews will close the southern portion of Pape Avenue between the 449 Carlaw plaza entrance and Langley Avenue to accommodate these works.
 - Starting as early as January 20, 2025, crews will begin to remove potentially sensitive materials, otherwise known as abatement, followed by utility disconnections.
 - Abatement and utility disconnections will take approximately 4-6 weeks.
 - After abatement and utility disconnections, crews will demolish the structures of 388 - 402 Pape Ave.

What to expect:

Construction

- Work will involve the use of construction equipment including excavators, bobcats, and dump trucks.
 - Residents and businesses in the area may hear noise caused by work equipment. Crews will take measures to minimize noise impacts wherever possible.
 - During demolition, dust from trucks and construction equipment is expected. Crews will implement mitigations to reduce dust.
 - Removal of sensitive materials, otherwise known as abatement, is regulated by the Occupational Health and Safety Act. All sensitive materials will be removed prior to structural demolition.

- Vegetation will be removed from select areas. During peak bird nesting periods, wildlife surveys will be completed before removal begins to protect active nests in the area in accordance with the Federal Migratory Birds Convention Act and Provincial Endangered Species Act and the Conservation Authorities Act. We will provide additional notification in advance of any tree removal.
- Work may be delayed due to weather conditions or unforeseen circumstances.

Pedestrian and Traffic Details

- Pape Avenue will be closed to vehicular traffic south of Langley Ave.
 - Vehicles travelling south on Pape Ave must turn right onto Langley Ave.
 - Vehicles travelling east on Langley Ave must turn left onto Pape Ave.
 - The pedestrian bridge will remain accessible via the east sidewalk on Pape Ave.
- A construction trailer will be located within the closed section of Pape Avenue.

Safety

- Short-term traffic interruptions can be expected while trucks and equipment enter and exit work zones; PDO and/or traffic control personnel will be present to direct vehicles and pedestrians.
- After-hours security will be onsite between 7:00 p.m. and 7:00 a.m. to ensure equipment and materials are not tampered with.

About the Ontario Line

- 15.6-kilometre subway line that will make it faster and easier to travel within Toronto and beyond.
- 15 stops and more than 40 connections to other transit, including GO train, subway, LRT, streetcar, and bus lines.
- Less than 30 minutes from one end of the line to the other.
- 28,000 fewer cars on the road each day.

Contact us:

Call us 24/7 at: [416-202-5100](tel:416-202-5100)
 Write to us at: ontarioline@metrolinx.com
 Find us on Twitter, Facebook, and
 Instagram: [@ontarioline](https://www.instagram.com/ontarioline)
 Visit the website:
www.metrolinx.com/ontarioline

Visit our community offices:

Riverside:
 770 Queen St. E, Toronto, ON, M4M 1H4

General hours:

- Mondays, Tuesdays and Fridays: 9 a.m. to 5 p.m.
- Wednesdays and Thursdays: 10 a.m. to 6 p.m.

Thorncliffe Park:

East York Town Centre
 45 Overlea Blvd., Toronto, ON M4H 1C3
 Unit 153 (across from the Rogers store)

General hours:

- Monday to Friday: 9 a.m. to 5 p.m.