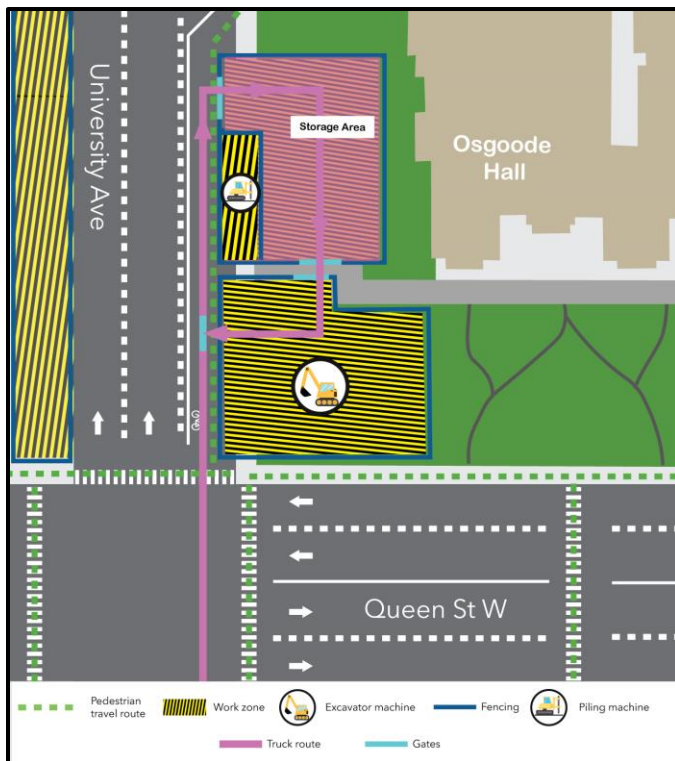


Construction activities at the Osgoode North site: piling and excavation preparation works

Hours of work:

- Weekdays, overnight from 7:00 p.m. to 7:00 a.m. from January to the end of March 2025, with some Saturdays as required.



Update: Construction piling

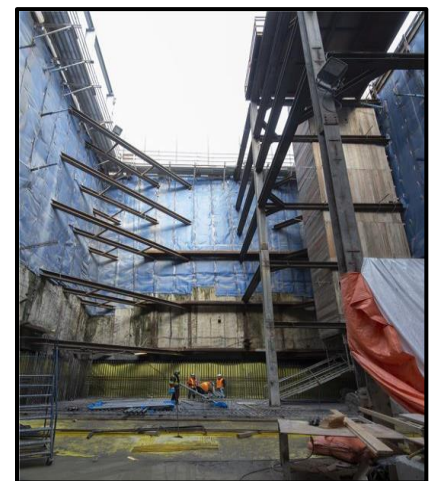
- Station piling work continues at the north site.
- Crews will soon move north to a work zone adjacent to University Avenue to begin piling for a future ventilation shaft.
- Piling work is expected to take approximately 12 weeks to complete, weather permitting.

Upcoming work: Station excavation preparation

- Once piling is complete, crews will begin to prepare the site for the future excavation of soil and rock.
- Crews will be installing an acoustic shelter over the excavation shaft at the north station site. The acoustic shelter will cover the shaft excavation for the future Osgoode Station.
- Crews will deliver and install an overhead crane to the site, which will be housed within the acoustic shelter and sit above the excavation.

What to expect:

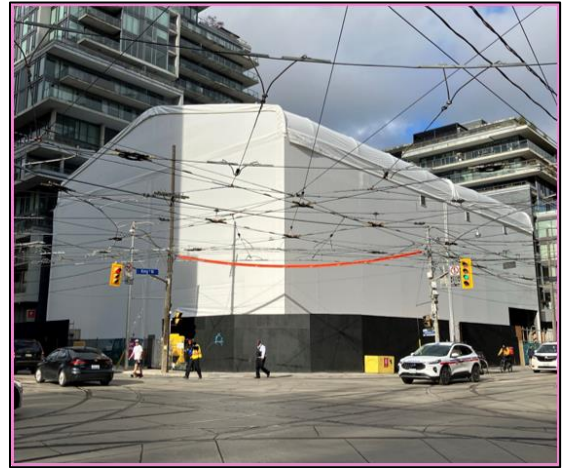
- Excavation preparation activities at the Osgoode north station site will start in late January 2025, weather permitting.
- Work will continue overnight, and hours will vary during preparation and active excavation activities. Additional workdays or hours may be required to allow teams to complete work.
- Access to Osgoode Hall will be maintained at all times.
- Expected on-site construction equipment includes cranes, excavators, loaders, dump trucks, and other machinery as required during this work.
- Delivery of the crane may occur outside of typical work hours due to its size and required temporary lane closures. Traffic control persons will be deployed to safely guide the oversize delivery if required.
- Truck traffic will enter and leave worksites daily, following specified routes.
- To reduce impacts to residents and businesses in the area, mitigations are in place including air quality, noise, and vibration monitoring, as well as site hoarding and mud mats for dust suppression.



Example of an excavated shaft.

Piling and excavation preparation activities: January 2025 to end of March 2025

- Piling work is expected to be completed at the future north station site by the end of March.
- Once piling work in the north shaft is completed, crews will start capping beam construction in preparation for the future acoustic shelter installation.
- Crews will then prepare for excavation by installing an overhead crane and acoustic shelter over the excavation shaft at the north station site.
- Once completed, the acoustic shelter will cover the shaft excavation. The shelter will reduce noise and minimize dirt and dust from the work area. Crews will also deliver and install an overhead crane to the site. Delivery of the crane may occur outside of typical work hours due to its size and required temporary lane closures. Traffic control persons will be deployed to safely guide the oversize delivery if required.
- The crane will be housed within the acoustic shelter and sit above the excavation site.
- This type of crane can move back and forth on girders within the construction site, allowing it to load materials and deliver them to precise locations within the station site at that location.
- The overhead crane will be assembled using a smaller mobile crane.



Example of acoustic shelter installation at the King-Bathurst north site - for illustrative purposes only.

Note: Work may be postponed or rescheduled due to unforeseen circumstances.

About the Ontario Line

- 15.6-kilometre subway line that will make it faster and easier to travel within Toronto and beyond.
- 15 stops and more than 40 connections to other transit, including GO train, subway, LRT, streetcar, and bus lines.
- Less than 30 minutes from one end of the line to the other.
- 28,000 fewer cars on the road each day.

Contact us:

Call us 24/7 at: **416-202-5100**

Write to us at: ontarioline@metrolinx.com

Find us on X, Facebook, and Instagram:

[@ontarioline](https://www.instagram.com/ontarioline)

Visit the website:

www.metrolinx.com/ontarioline

Visit our community offices:

770 Queen Street East (near Queen & Broadview)

General hours:

Mondays, Tuesdays, and Fridays: 9:00 a.m. to 5:00 p.m.

Wednesday: 1:00 p.m. to 6:00 p.m.

Thursday: 10:00 a.m. to 6:00 p.m.

Thornccliffe Park:

East York Town Centre

45 Overlea Blvd., Toronto, ON M4H 1C3

Unit 153 (across from the Rogers store)

General hours:

Monday - Friday, 9 a.m. - 5 p.m.