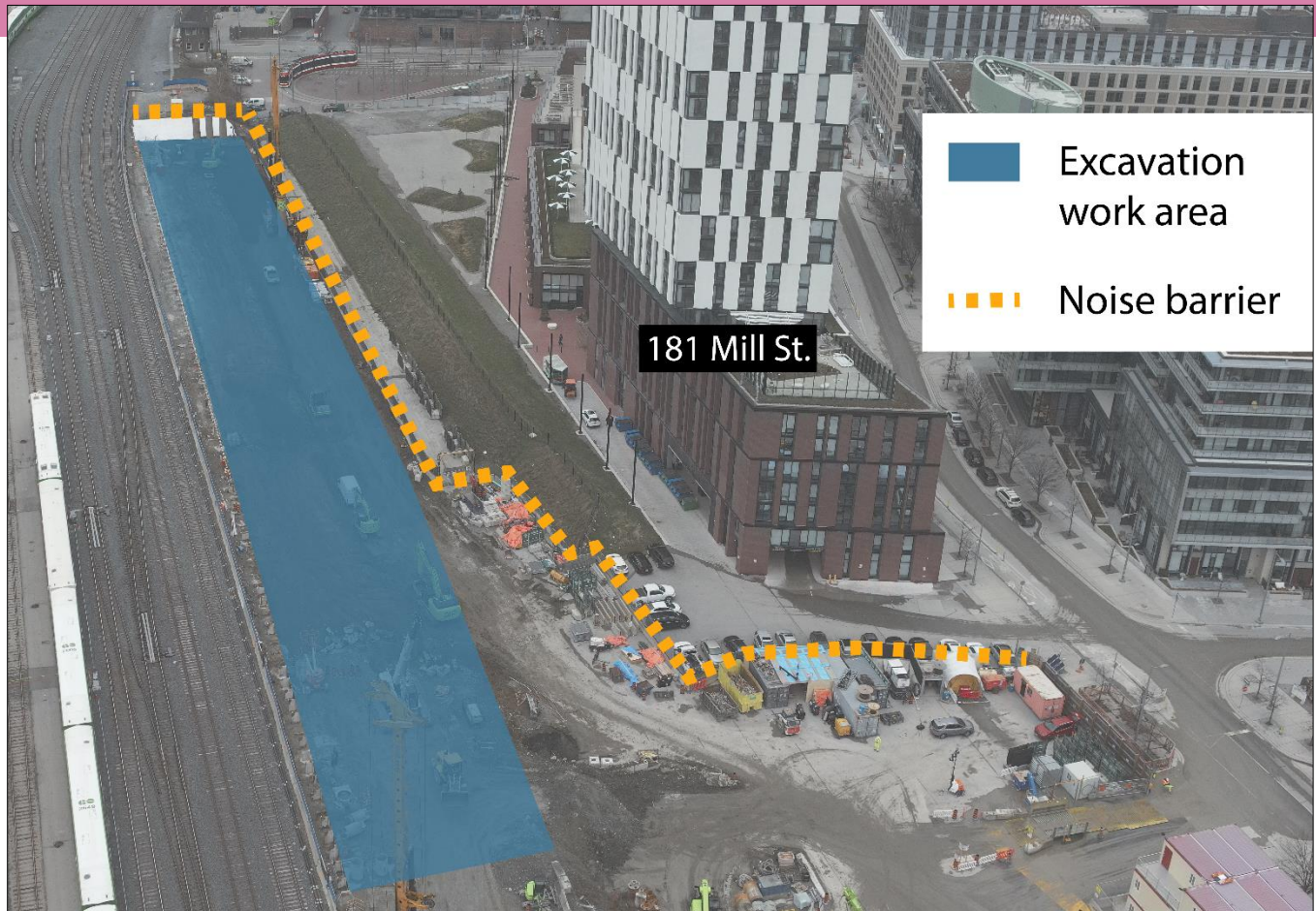


Overnight excavation and hauling in the Don Yard Rail Corridor

Expected start date: Late January 2025

Hours of Work: Intermittent night work Monday to Friday between 7 p.m. to 7 a.m.

Expected completion: Early Fall 2025



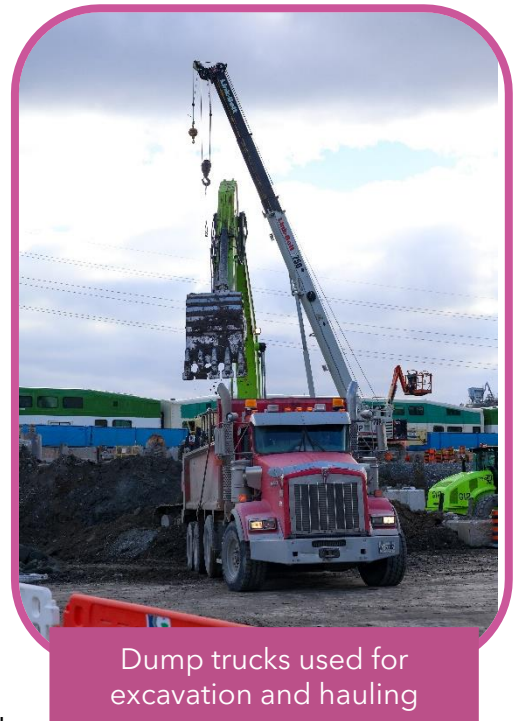
What is happening?

- Late January, **intermittent** excavation and hauling work will begin overnight in the Don Yard. Night work will be intermittent and will not occur every night..
- Large amounts of soil and material need to be removed from the Don Yard to build the new tunnel and portal for the Ontario Line subway.
- In total, approximately 130,000 m³ of material will be excavated. This is similar to the amount of material removed to build 1,300 residential swimming pools.
- Overnight work will allow this activity to be completed faster and shorten construction activity in the community.
- Overnight work will reduce the number of trucks on the road during peak traffic, pedestrian and cyclist hours.
- Mitigation measures are in place during the day and night to minimize noise from excavation and hauling work. These noise mitigations have been tested and will reduce noise levels. See further details in the **Construction Mitigations** section below.

Construction mitigations

- To reduce noise from **excavation and hauling**, the following measures are being implemented:
 - All vehicles are equipped with broadband backup alarms
 - No vehicle idling is permitted
 - Added nighttime supervision and noise monitoring

- A new noise barrier will be installed along the site boundary and truck exit (see map above)
 - Noisier activities such as concrete scraping, will only be scheduled during the daytime
 - Weekly maintenance inspections are performed to ensure equipment is in good working order
 - Enforcing good neighbour behaviour with on-site staff (no shouting, closing vehicle doors quietly, keeping radio volumes low, etc.)
- In addition to noise mitigation, dust control measures will also be in place during this work, including:
 - Routinely spraying water to minimize dust during excavation and hauling
 - Washing down roadways and sidewalks
 - Applying dust suppressants (beetroot powder) along vehicle routes
 - A wheel wash station is in place at the site exit to wash the sides, underbodies and tires of all vehicles leaving the site



Dump trucks used for excavation and hauling

What to expect

- Between 12 and 14 trucks per hour during major excavation work – this number of trucks is not expected daily.
- Daytime excavation and hauling are ongoing and will continue until early Fall 2025.
- Trucks will enter and exit the site from Mill Street.
- Excavators will load material into dump trucks that will then transport (haul) the material off site.
- Excavators, dump trucks, cranes, and loader trucks will be used to complete this work.
- Noise, vibration, and air quality monitoring is in place to ensure acceptable levels are maintained.
- Construction equipment and materials will be properly secured within the work zone.
- Work may be delayed or rescheduled due to inclement weather and/or unforeseen circumstances.



Wheel wash station used to keep roads clean

About the Ontario Line

- 15.6-kilometre subway line that will make it faster and easier to travel within Toronto and beyond.
- 15 stops and more than 40 transit connections, including GO, TTC and more.
- Less than 30 minutes from one end of the line to the other.
- 28,000 fewer cars on the road each day.

Contact us:

Call us 24/7 at: [416-202-5100](tel:416-202-5100)
 Write to us at: ontarioline@metrolinx.com
 Find us on Twitter, Facebook, and
 Instagram: [@ontarioline](https://www.instagram.com/ontarioline)
 Visit the website:
www.metrolinx.com/ontarioline

Visit our community offices:

770 Queen Street East (near Queen & Broadview)
 General hours:
 Mondays, Tuesdays, and Fridays: 9:00 a.m. to 5:00 p.m.
 Wednesdays 1:00 p.m. to 6:00 p.m.
 Thursdays: 10:00 a.m. to 6:00 p.m.

Thorncliffe Park:

East York Town Centre
 45 Overlea Blvd., Toronto, ON M4H 1C3
 Unit 153 (across from the Rogers store)
 General hours:
 Monday – Friday, 9 a.m. – 5 p.m.