



SHELTER TYPE 1 - RAIL LINE STATION PASSENGER SHELTER



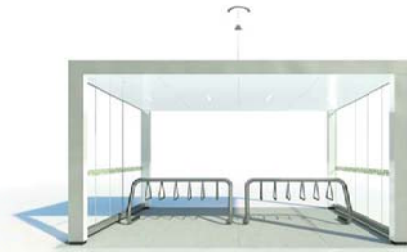
SHELTER TYPE 2 - CARPOOL LOTS PASSENGER SHELTER



SHELTER TYPE 3 - ON-STREET BUS PASSENGER SHELTER



SHELTER TYPE 4 - SMALL BIKE SHELTER



SHELTER TYPE 5 - LARGE BIKE SHELTER



SHELTER TYPE 6 - AMENITIES SHELTER



ARCHITECTURAL SHEET LIST		
SHEET NUMBER	SHELTER TYPE	SHEET NAME
A1.0	SHELTER TYPE 1 - RAIL LINE STATIONS PASSENGER SHELTER	3D ISOMETRIC VIEWS
A1.1	SHELTER TYPE 1 - RAIL LINE STATIONS PASSENGER SHELTER	PLANS
A1.2	SHELTER TYPE 1 - RAIL LINE STATIONS PASSENGER SHELTER	ELEVATIONS
A1.3	SHELTER TYPE 1 - RAIL LINE STATIONS PASSENGER SHELTER	SECTIONS
A2.0a	SHELTER TYPE 2 - CARPOOL LOTS PASSENGER SHELTER	3D ISOMETRIC VIEWS
A2.0b	SHELTER TYPE 2 - CARPOOL LOTS PASSENGER SHELTER	3D STRUCTURAL ISOMETRIC VIEWS
A2.1	SHELTER TYPE 2 - CARPOOL LOTS PASSENGER SHELTER	PLANS
A2.2	SHELTER TYPE 2 - CARPOOL LOTS PASSENGER SHELTER	REFLECTED CEILING PLAN
A2.3	SHELTER TYPE 2 - CARPOOL LOTS PASSENGER SHELTER	ELEVATIONS
A2.4	SHELTER TYPE 2 - CARPOOL LOTS PASSENGER SHELTER	SECTIONS
A2.5	SHELTER TYPE 2 - CARPOOL LOTS PASSENGER SHELTER	SECTIONS
A3.0	SHELTER TYPE 3 - ON-STREET BUS PASSENGER SHELTER	3D ISOMETRIC VIEWS
A3.1	SHELTER TYPE 3 - ON-STREET BUS PASSENGER SHELTER	PLANS AND SECTIONS
A3.2	SHELTER TYPE 3 - ON-STREET BUS PASSENGER SHELTER	ELEVATIONS
A4.0	SHELTER TYPE 4 - SMALL BIKE SHELTER	3D ISOMETRIC VIEWS
A4.1	SHELTER TYPE 4 - SMALL BIKE SHELTER	PLANS
A4.2	SHELTER TYPE 4 - SMALL BIKE SHELTER	ELEVATIONS AND SECTIONS
A5.0	SHELTER TYPE 5 - LARGE BIKE SHELTER	3D ISOMETRIC VIEWS
A5.1	SHELTER TYPE 5 - LARGE BIKE SHELTER	PLANS
A5.2	SHELTER TYPE 5 - LARGE BIKE SHELTER	ELEVATIONS AND SECTIONS
A6.0	SHELTER TYPE 6 - AMENITIES SHELTER	3D ISOMETRIC VIEWS
A6.1	SHELTER TYPE 6 - AMENITIES SHELTER	PLANS, ELEVATIONS, AND SECTIONS
A8.1	GENERAL	ROOF AND GLAZING DETAILS
A8.2	GENERAL	INFO / SERVICE WALL A DETAILS
A8.3	GENERAL	INFO / SERVICE WALL B DETAILS
A8.4	GENERAL	ADDITIONAL INFO / SERVICE WALL DETAILS
A8.5	GENERAL	DOOR FRAME DETAILS
A8.6	GENERAL	SWING GUARD AND OPEN FRAME DETAILS
A8.7	GENERAL	FURNISHINGS DETAILS
A8.8	GENERAL	

ELECTRICAL SHEET LIST		
SHEET NUMBER	SHELTER TYPE	SHEET NAME
ED.1	GENERAL	ELECTRICAL SYMBOLS LEGEND
ED.2	GENERAL	ELECTRICAL INTERCONNECTION DIAGRAM
E1.1	SHELTER TYPE 1 - RAIL LINE STATIONS PASSENGER SHELTER	POWER AND LIGHTING PLANS
E2.1	SHELTER TYPE 2 - CARPOOL LOTS PASSENGER SHELTER	POWER AND LIGHTING PLANS
E2.2	SHELTER TYPE 2 - CARPOOL LOTS PASSENGER SHELTER	HEAT TRACE PLAN
E3.1	SHELTER TYPE 3 - ON-STREET BUS PASSENGER SHELTER	POWER AND LIGHTING PLANS
E4.1	SHELTER TYPE 4 - SMALL BIKE SHELTER	POWER AND LIGHTING PLANS
E5.1	SHELTER TYPE 5 - LARGE BIKE SHELTER	POWER AND LIGHTING PLANS
E6.1	SHELTER TYPE 6 - AMENITIES SHELTER	POWER AND LIGHTING PLANS

STRUCTURAL SHEET LIST		
SHEET NUMBER	SHELTER TYPE	SHEET NAME
S0.1	GENERAL	GENERAL NOTES AND DRAWING LIST
S1.1	SHELTER TYPE 1 - RAIL LINE STATIONS PASSENGER SHELTER	PLANS AND DETAILS
S2.1	SHELTER TYPE 2 - CARPOOL LOTS PASSENGER SHELTER	PLANS
S2.2	SHELTER TYPE 2 - CARPOOL LOTS PASSENGER SHELTER	DETAILS
S3.1	SHELTER TYPE 3 - ON-STREET BUS PASSENGER SHELTER	PLANS AND DETAILS
S4.1	SHELTER TYPE 4 - SMALL BIKE SHELTER	PLANS AND DETAILS
S5.1	SHELTER TYPE 5 - LARGE BIKE SHELTER	PLANS AND DETAILS
S6.1	SHELTER TYPE 6 - AMENITIES SHELTER	PLANS AND DETAILS

MASTER KEYNOTE LIST	
KEY VALUE	DESCRIPTION
03 30 00	CAST-IN-PLACE CONCRETE
03 30 20	SANDED STRIKE CONCRETE FINISHING
05 14 00	STRUCTURAL ALUMINUM FRAMING
05 14 13	ARCHITECTURALLY-EXPOSED STRUCTURAL ALUMINUM FRAMING
05 10 00.01	STEEL ROOF SCORING
05 50 00.00	ALUMINUM SHEET
05 50 00.01	3mm ALUMINUM PLATE
05 50 00.02	5mm ALUMINUM PLATE
05 50 00.03	6-8mm ALUMINUM PLATE
05 50 00.04	ALUMINUM EXTRUSION
05 50 00.05	ALUMINUM FINISHING
05 50 00.07	3mm PERFORATED ALUMINUM PLATE
05 50 00.08	BENCH SEATS
05 50 00.01	PVC DOWNWATER LEADER
05 50 00.02	PVC DOWNWATER LEADER CLEANOUT
05 50 00.03	13mm WHITE CORIAN
05 50 00.04	ALUMINUM BIKE SYMBOL
05 50 00.05	ALUMINUM GUTTER
05 50 00.06	ALUMINUM STUB SHAFT CONNECTION
07 42 41.01	ALUMINUM CEILING PANELS
07 54 20.01	PVC MEMBRANE ROOF OR 20mm PLYWOOD DECK
07 54 20.02	PVC MEMBRANE ROOF OR 13mm SHEATHING BOARD
08 56 88.01	CUSTOM ALUMINUM GLAZING SINE
08 56 88.02	RECESSED GLAZING HEAD CHANNEL
08 56 88.03	GLAZING SUPPORT AND LEVELLING BOLTS
08 71 13.01	AUTOMATIC DOOR OPERATOR
08 71 13.02	AUTOMATIC DOOR OPERATOR BUTTON
08 80 00.01	RETRACTION DECAL
08 80 00.02	AUTOMATIC DOOR SEN
08 80 00.03	PUSH-PULL LEGAL (DOOR)
08 80 00.04	10MM CLEAR TEMPERED GLASS WITH PROTECTIVE LOW-E COATING
08 80 00.05	10MM CLEAR TEMPERED GLASS
08 80 00.06	6MM CLEAR LOW-IRON TEMPERED GLASS
08 80 00.07	6MM LOW-IRON TEMPERED GLASS WITH WHITE CERAMIC ON BACK
23 10 00.01	RADIANT HEATED HEATERS - ELECTRIC
23 10 00.02	HEATER CONTROL BUTTON
26 05 31.01	JUNCTION BOX
26 09 24.01	PHOTOCELL DAYLIGHTING SENSOR
26 27 26.01	LED SCREEN
26 27 26.02	LED LIGHT PANEL
26 27 26.03	OFFER RECEPTACLE
26 27 26.04	USB CHARGING RECEPTACLE
26 50 00.01	RECESSED LED LINEAR LIGHT FIXTURE
27 51 16.01	PUBLIC ADDRESS SPEAKER
27 53 25.01	TRIP-DISK COMMUNICATION DEVICE
28 20 00.01	OUTDOOR CCTV CAMERA

DOORS SCHEDULE								
DOOR NO.	Type	Location	DOOR			Door Material	Door Finish	Comments
			Width	Height	Thickness			
D1	Shelter Door - Glass	Shelter Type 1	1975	2300	47.6	Aluminum	Coating, as per drawings	
D2	Shelter Door - Glass	Shelter Type 1	1975	2300	47.6	Aluminum	Coating, as per drawings	
D3	Shelter Door - Glass	Shelter Type 2	1975	2300	47.6	Aluminum	Coating, as per drawings	
D4	Shelter Door - Glass	Shelter Type 2	1975	2300	47.6	Aluminum	Coating, as per drawings	
D001	Interior B - Entry Access Door	Shelter Type 1	1335.6	1943	85.2	Aluminum	As per drawings	
D002	Interior B - Entry Access Door	Shelter Type 2	1335.6	1943	85.2	Aluminum	As per drawings	
D003	Interior B - Entry Access Door	Shelter Type 3	1335.6	1943	85.2	Aluminum	As per drawings	
D004	Interior B - Entry Access Door	Shelter Type 4	1335.6	1943	85.2	Aluminum	As per drawings	
D005	Interior B - Entry Access Door	Shelter Type 5	1335.6	1943	85.2	Aluminum	As per drawings	
D006	Interior B - Entry Access Door	Shelter Type 6	1335.6	1943	85.2	Aluminum	As per drawings	
D007	Interior B - Entry Access Door	Shelter Type 1	1335.6	1943	85.2	Aluminum	As per drawings	Optional
D008	Interior B - Entry Access Door	Shelter Type 2	1335.6	1943	85.2	Aluminum	As per drawings	Optional
D009	Interior B - Entry Access Door	Shelter Type 3	1335.6	1943	85.2	Aluminum	As per drawings	Optional
D010	Interior B - Entry Access Door	Shelter Type 4	1335.6	1943	85.2	Aluminum	As per drawings	Optional
D011	Interior B - Entry Access Door	Shelter Type 5	1335.6	1943	85.2	Aluminum	As per drawings	Optional
D012	Interior B - Entry Access Door	Shelter Type 6	1335.6	1943	85.2	Aluminum	As per drawings	Optional
D013	Interior B - Entry Access Door	Shelter Type 1	1335.6	1943	85.2	Aluminum	As per drawings	Optional
D014	Interior B - Entry Access Door	Shelter Type 2	1335.6	1943	85.2	Aluminum	As per drawings	Optional
D015	Interior B - Entry Access Door	Shelter Type 3	1335.6	1943	85.2	Aluminum	As per drawings	Optional
D016	Interior B - Entry Access Door	Shelter Type 4	1335.6	1943	85.2	Aluminum	As per drawings	Optional
D017	Interior B - Entry Access Door	Shelter Type 5	1335.6	1943	85.2	Aluminum	As per drawings	Optional
D018	Interior B - Entry Access Door	Shelter Type 6	1335.6	1943	85.2	Aluminum	As per drawings	Optional

LIGHTING FIXTURES LEGEND				
Value	Type - Length	Comments	Count / Keynote	
L1	RECESSED LINEAR LED - 640 mm	Shelter Type 1	1	05 50 00.01
L2	RECESSED LINEAR LED - 968.5 mm	Shelter Type 2	10	26 50 00.01
L3	RECESSED LINEAR LED - 458.5 mm	Shelter Type 4	4	26 50 00.01
L4	RECESSED LINEAR LED - 583.5 mm	Shelter Type 5	4	26 50 00.01
L5	RECESSED LINEAR LED - 583.5 mm	Shelter Type 6	6	26 50 00.01

GLAZING LEGEND	
Tag	Description
G1	10mm Clear Glass with Low-E Coating
G2	10mm Clear Glass
G3	6mm Low-Iron Glass
G4	10mm Clear Glass with Low-E Coating

COATINGS LEGEND	
Tag	Description
P1	Paint: Silver Gray, Matte
P2	Paint: White, Glossy
P3	Paint: Dark Gray, Matte

METRIC
ALL DIMENSIONS SHOWN
ARE IN METERS AND/OR
MILLIMETERS UNLESS
OTHERWISE NOTED

REFERENCE DRAWINGS		ISSUE		REVISIONS	
NO.	DATE	NO.	DATE	NO.	DATE
1	2016/08/12	50% DETAILED DESIGN	1	2016/02/01	100% DETAILED DESIGN (DRAFT) - REVISED
2	2016/10/07	75% DETAILED DESIGN			
3	2016/10/27	100% DETAILED DESIGN (DRAFT)			
4	2016/08/02	100% DETAILED DESIGN			

DRAWN BY: JDG
CHECKED BY: PH
2016/07/26
SCALE: 1 : 5

DESIGNED BY: gh3
APPROVED BY: PH
2016/07/26
FULL SIZE ONLY



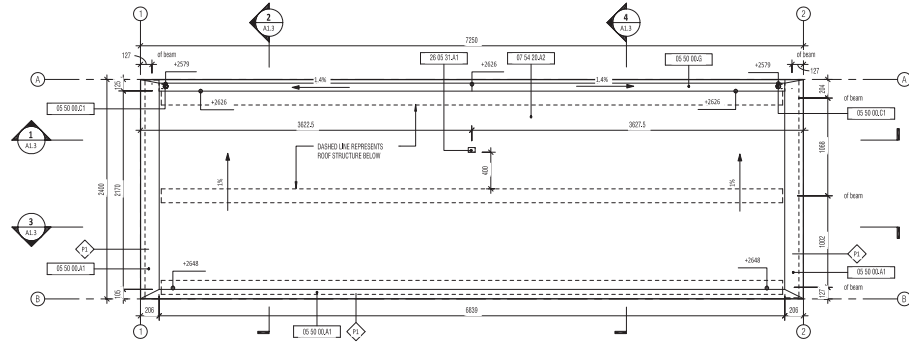
GO SHELTER DESIGNS

DRAWINGS LIST, SCHEDULES, AND GENERAL NOTES

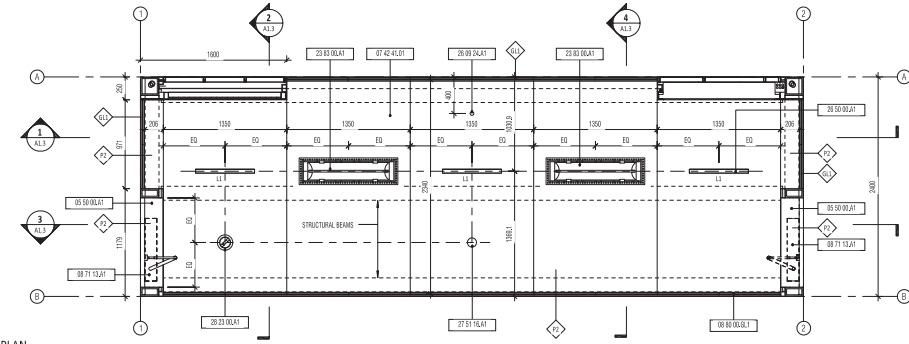
CONTRACT NO: R00-2014- CON-06.1	DRAWING NO: 0.1	REV: 0	SHEET
---------------------------------------	--------------------	--------	-------

METROLINX PROJECT NO. XXXXXX

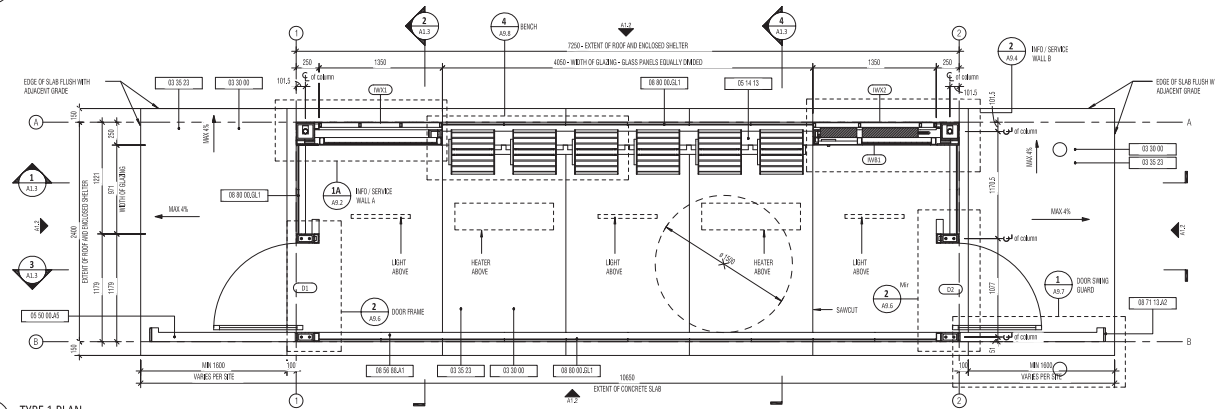
GENERAL NOTES:
1. Drawings are not to be scaled. Contractor shall verify all building conditions and dimensions required to perform the Work and all report as discrepancies with the Contract Documents to the Architect before commencing work.
2. The Architectural Drawings are to be used in conjunction with all other Contract Documents including the Project Manuals and the Technical and General Drawings. In case of a discrepancy between the Contract Documents with respect to the quantity, dimensions or scope of work, the greater shall prevail.
3. The Contractor is responsible for obtaining all permits, licenses, and approvals and for obtaining all necessary approvals from the local, state, and federal authorities. The Contractor shall be responsible for obtaining all necessary approvals from the local, state, and federal authorities. The Contractor shall be responsible for obtaining all necessary approvals from the local, state, and federal authorities.
4. The Contractor shall be responsible for obtaining all necessary approvals from the local, state, and federal authorities. The Contractor shall be responsible for obtaining all necessary approvals from the local, state, and federal authorities.
5. The Contractor shall be responsible for obtaining all necessary approvals from the local, state, and federal authorities. The Contractor shall be responsible for obtaining all necessary approvals from the local, state, and federal authorities.
6. These documents are not to be used for construction unless specifically noted for such purpose.



3 TYPE 1 ROOF PLAN
A1.1 1:25



2 TYPE 1 REFLECTED CEILING PLAN
A1.1 1:25



1 TYPE 1 PLAN
A1.1 1:25

KEYNOTE LEGEND	
NO.	DESCRIPTION
03 30 00	CAST-IN-PLACE CONCRETE
03 30 20	STRUCTURED CONCRETE FINISHING
05 14 13	ARCHITECTURALLY-EXPOSED STRUCTURAL ALUMINUM FRAMING
05 50 00.01	3mm ALUMINUM PLATE
05 50 00.05	ALUMINUM EXTRUSION
05 50 00.03	PVC RAINWATER LEADER
05 50 00.02	ALUMINUM GUTTER
07 40 41.01	ALUMINUM CEILING PANELS
07 54 20.02	PVC MEMBRANE ROOF ON 15mm SHEATHING BOARD
08 50 00.01	CUSTOM ALUMINUM GLAZING SHOE
08 77 13.A1	AUTOMATIC DOOR OPERATOR
08 77 13.A2	AUTOMATIC DOOR OPERATOR BUTTON
08 80 00.01	TOWAY CLEAR TEMPERED GLASS WITH PYROCLIFIC LOW-E COATING
03 30 00.01	BROWN IMPREGATED HEATERS - ELECTRIC
05 05 31.A1	JUNCTION BOX
26 09 04.01	PHOTOCELL DAYLIGHTING SENSOR
05 00 00.01	PROCESSED LED INSIDE LIGHT FIXTURE
27 51 16.A1	PUBLIC ADDRESS SPEAKER
28 23 00.01	OUTDOOR CCTV CAMERA

NOTE:
THIS DRAWING IS PROVIDED FOR INSTRUCTIONAL DESIGN PURPOSES ONLY BASED ON METROLINX GO TRASH DESIGN COMPLIANCE AND REQUIREMENTS. THE CONSULTANT SHALL VERIFY FOR LOCAL CODE COMPLIANCE, SPECIFIC SITE CONDITIONS AND INTERDISCIPLINARY DRAWING COORDINATION. ALL DIMENSIONS AND SPECIFICATIONS SHOULD BE VERIFIED BY CONSULTANT AND/OR CONTRACTOR BEFORE ACTUAL CONSTRUCTION BEGINS.

METRIC
ALL DIMENSIONS SHOWN
ARE IN METERS AND/OR
MILLIMETERS UNLESS
OTHERWISE NOTED

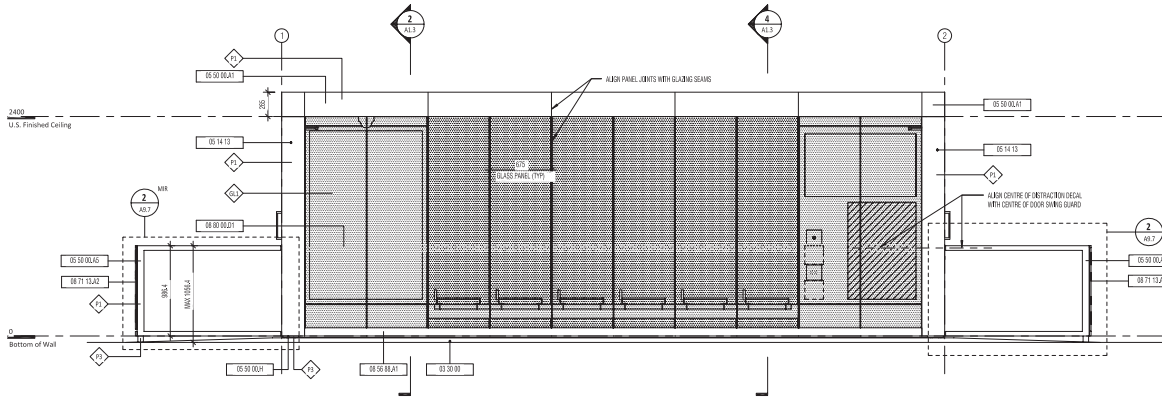
METROLINX PROJECT NO. XXXXXX

REFERENCE DRAWINGS		ISSUE		REVISIONS		DRAWN BY:	DESIGNED BY:	GO SHELTER DESIGNS	
		1	2016/08/12	50% DETAILED DESIGN	1	2016/02/01	100% DETAILED DESIGN (DRAFT)-REVISED	SHELTER TYPE 1 - RAIL LINE STATIONS PASSENGER SHELTER	
		2	2016/08/07	75% DETAILED DESIGN				PLANS	
		3	2016/08/07	100% DETAILED DESIGN (DRAFT)				CONTRACT NO: R00-2014-CON-061	
		4	2016/08/02	100% DETAILED DESIGN				DRAWING NO: A1.1	
REV:	REV:	NO:	DATE:	ISSUED FOR:	REV:	DATE:	SCALE:	REV: SHEET	
							1 : 25	0.	

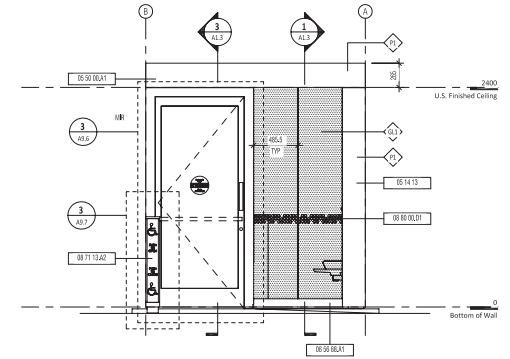


CONTRACT NO: R00-2014-CON-061
DRAWING NO: A1.1
REV: 0. SHEET

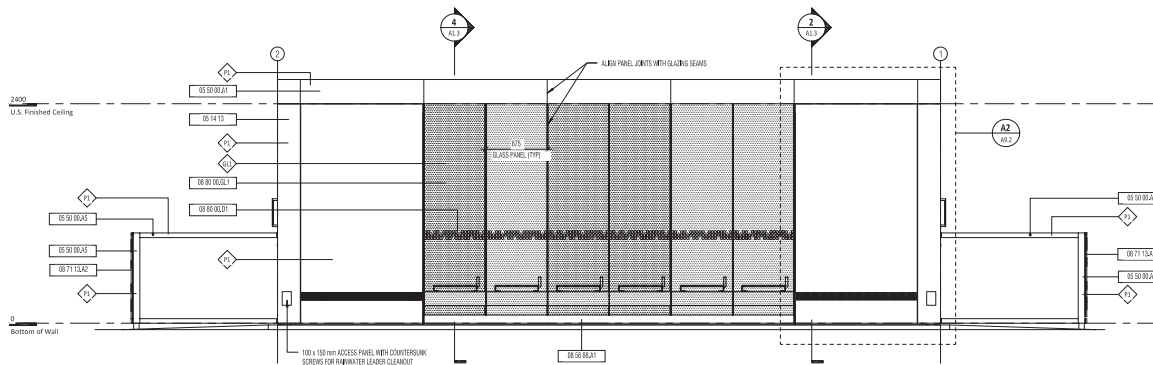
KEYNOTE LEGEND	
NO.	DESCRIPTION
03 30 00	CAST-IN-PLACE CONCRETE
05 14 13	ARCHITECTURALLY-EXPOSED STRUCTURAL ALUMINUM FRAMING
05 50 00.A1	FORM ALUMINUM PLATE
05 50 00.A5	ALUMINUM EXTRUSION
05 50 00.H	ALUMINUM STUD SHAFI CONNECTION
05 50 00.A1	CUSTOM ALUMINUM FINISHING SHOE
08 71 13.A2	AUTOMATIC DOOR OPERATOR BUTTON
08 80 00.D1	DESTRUCTION DECAL
08 80 00.G.1	FORM CLEAR TEMPERED GLASS WITH PYROLYTIC IONIC COATING



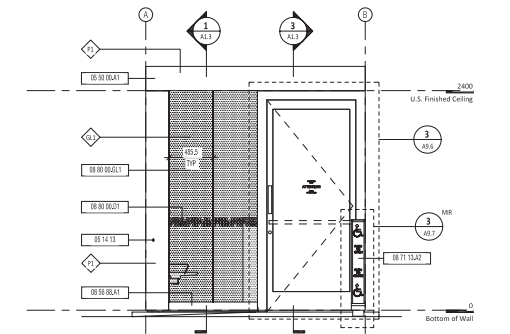
1 TYPE 1 ELEVATION - FRONT
A1.2 1:25



2 TYPE 1 ELEVATION - RIGHT
A1.2 1:25



3 TYPE 1 ELEVATION - BACK
A1.2 1:25



4 TYPE 1 ELEVATION - LEFT
A1.2 1:25

NOTE:
THIS DRAWING IS PROVIDED FOR INSTRUCTIONAL DESIGN PURPOSES ONLY BASED ON METROLINX GO TRANSIT DESIGN GUIDELINES AND REQUIREMENTS. THE CONSULTANT SHALL VERIFY FOR LOCAL CODE COMPLIANCE, SITE SPECIFIC CONDITIONS AND INTERDISCIPLINARY DRAWING COORDINATION. ALL DIMENSIONS AND SPECIFICATIONS SHOULD BE VERIFIED BY CONSULTANT AND/OR CONTRACTOR BEFORE ACTUAL CONSTRUCTION BEGINS.

METROLINX PROJECT NO. XXXXXX

METRIC
ALL DIMENSIONS SHOWN
ARE IN METERS AND/OR
MILLIMETERS UNLESS
OTHERWISE NOTED

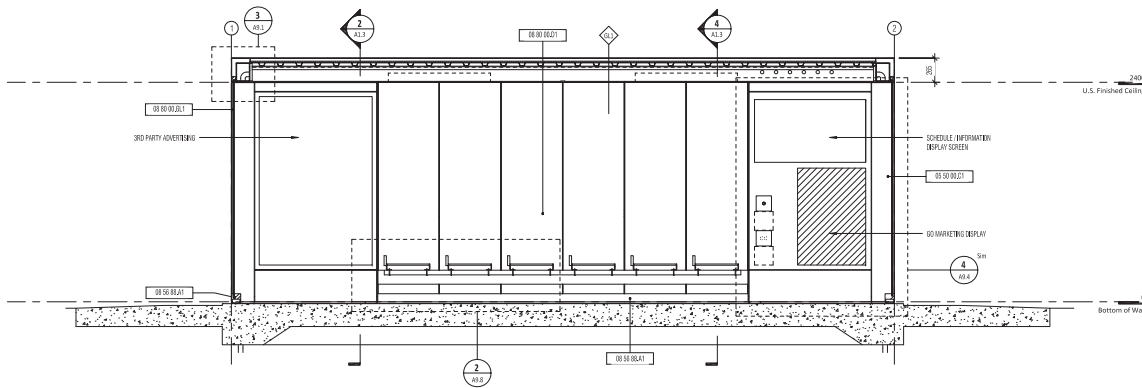
REFERENCE DRAWINGS		ISSUE		REVISIONS			
		1	2015/08/12	50% DETAILED DESIGN	1	2016/02/01	100% DETAILED DESIGN (DRAFT) - REVISED
		2	2015/10/07	75% DETAILED DESIGN			
		3	2016/01/27	100% DETAILED DESIGN (DRAFT)			
		4	2016/08/02	100% DETAILED DESIGN			
REV:	REV:	NO:	DATE:	ISSUED FOR:	REV:	DATE:	

DRAWN BY: JDG
DESIGNED BY: gh3
CHECKED BY: PH
2016/07/26
APPROVED BY: PH
2016/07/26
SCALE: FULL SIZE ONLY
1 : 25

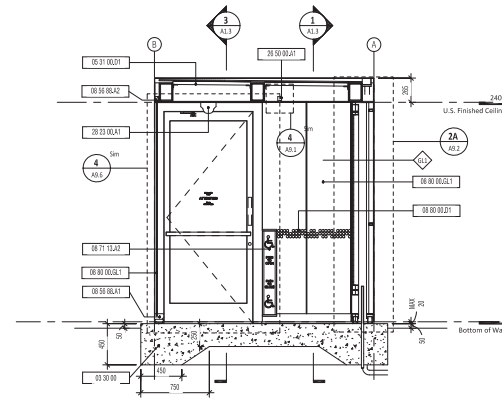


GO SHELTER DESIGNS
SHELTER TYPE 1 - RAIL LINE STATIONS PASSENGER SHELTER
ELEVATIONS

CONTRACT NO: R00-2014-CON-06.1
DRAWING NO: A1.2
REV: 0
SHEET: 0



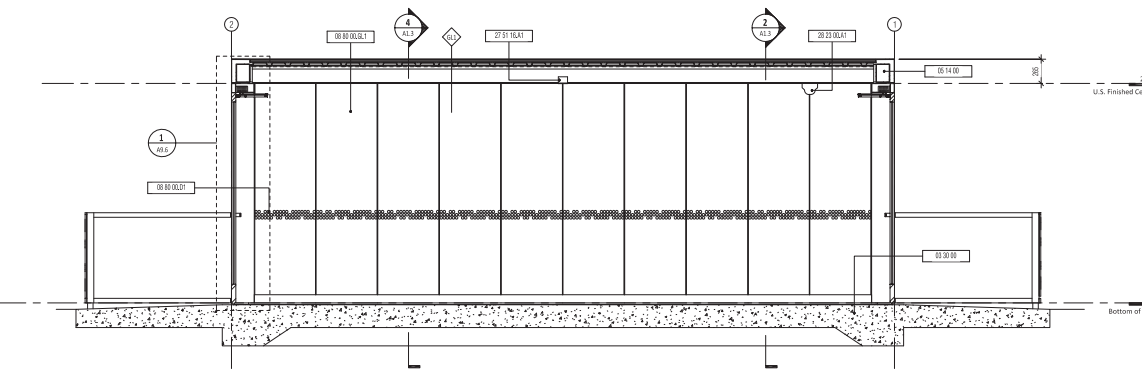
1 TYPE 1 SECTION 1
A1.3 1:25



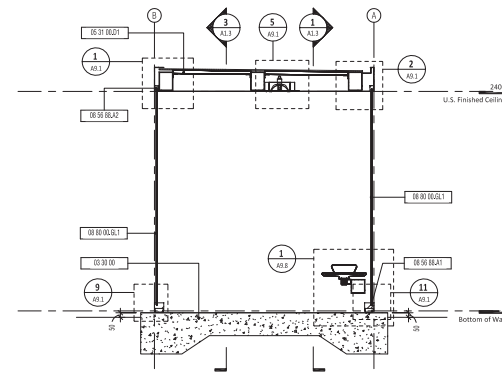
2 TYPE 1 SECTION 2
A1.3 1:25

KEYNOTE LEGEND	
NO.	DESCRIPTION
03 30 00	CAST-IN-PLACE CONCRETE
05 14 00	STRUCTURAL ALUMINUM FRAMING
05 31 00.01	STEEL ROOF BEAMING
05 50 00.01	PVC DOWNPIPE LEADER
08 55 88.01	CUSTOM ALUMINUM SLIDING SHOE
08 55 88.02	RECESSED GLAZING HEAD CHANNEL

KEYNOTE LEGEND	
NO.	DESCRIPTION
08 71 13.A2	AUTOMATIC DOOR OPERATOR BUTTON
08 80 00.01	DETRACTION DECAL
08 80 00.02	TINTED CLEAR TAMPONED GLASS WITH PHOTOCURABLE LAMINATE COATING
08 50 00.01	RECESSED LED UNDER LIGHT FIXTURE
07 51 18.A1	PUBLIC ADDRESS SPEAKER
08 23 00.A1	OUTDOOR CCTV CAMERA



3 TYPE 1 SECTION 3
A1.3 1:25



4 TYPE 1 SECTION 4
A1.3 1:25

NOTE:
THIS DRAWING IS PROVIDED FOR INSTRUCTIONAL DESIGN PURPOSES ONLY BASED ON METROLINX GO TRANSIT DESIGN GUIDELINES AND REQUIREMENTS. THE CONSULTANT SHALL VERIFY FOR LOCAL CODE COMPLIANCE, SITE SPECIFIC CONDITIONS AND INTERDISCIPLINARY DRAWING COORDINATION. ALL DIMENSIONS AND SPECIFICATIONS SHOULD BE VERIFIED BY CONSULTANT AND/OR CONTRACTOR BEFORE ACTUAL CONSTRUCTION BEGINS.

METRIC
ALL DIMENSIONS SHOWN
ARE IN METERS UNLESS
OTHERWISE NOTED

METROLINX PROJECT NO. XXXXXX

REFERENCE DRAWINGS		ISSUE		REVISIONS				
		1	2015/08/12	50% DETAILED DESIGN	1	2016/02/01	100% DETAILED DESIGN (DRAFT) - REVISED	
		2	2015/10/07	75% DETAILED DESIGN				
		3	2016/01/27	100% DETAILED DESIGN (DRAFT)				
		4	2016/08/02	100% DETAILED DESIGN				
REV:		REV:		NO:	DATE:	ISSUED FOR:	REV:	DATE:

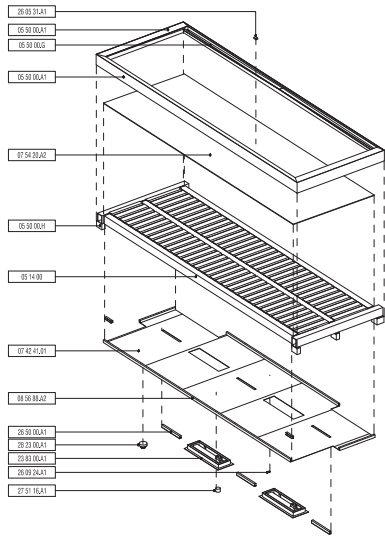
DRAWN BY: JDG	DESIGNED BY: gh3
CHECKED BY: PH 2016/07/26	APPROVED BY: PH 2016/07/26
SCALE: 1 : 25	FULL SIZE ONLY



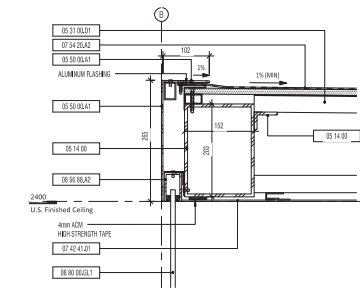
GO SHELTER DESIGNS
SHELTER TYPE 1 - RAIL LINE STATIONS PASSENGER SHELTER
SECTIONS

CONTRACT NO: R00-2014- CON-061	DRAWING NO: A1.3	REV: 0	SHEET 0
--------------------------------------	---------------------	-----------	------------

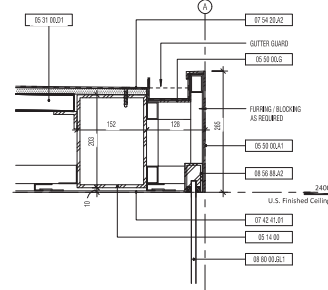
ROOF



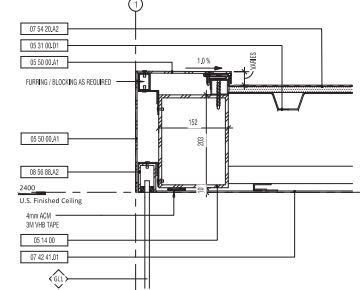
ROOF EXPLODED ISOMETRIC VIEW



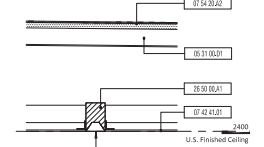
1 FRONT ROOF FASCIA - SECTION DETAIL



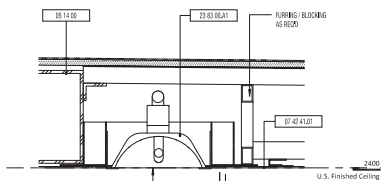
2 BACK ROOF FASCIA - SECTION DETAIL



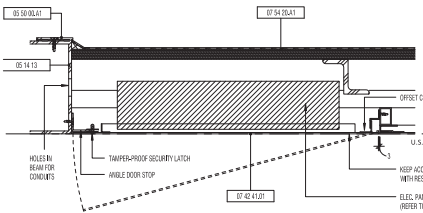
3 SIDE ROOF FASCIA - SECTION DETAIL



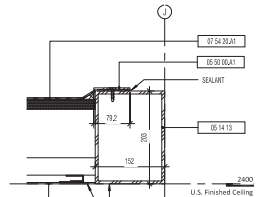
4 LIGHT DETAIL



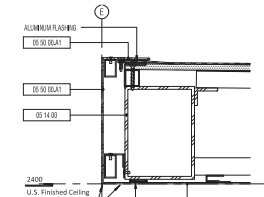
5 HEATER - SECTION DETAIL



6 CEILING ACCESS PANEL SECTION DETAIL

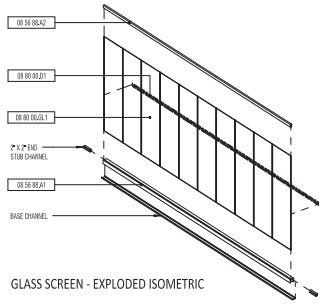


7 TYPE 5 OPEN FASCIA - SECTION DETAIL

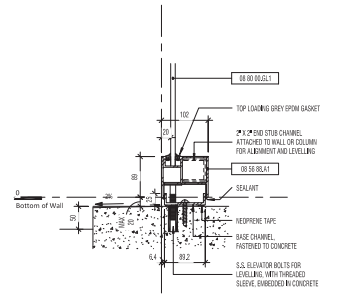


8 UNENCLOSED FRONT ROOF FASCIA - SECTION DETAIL

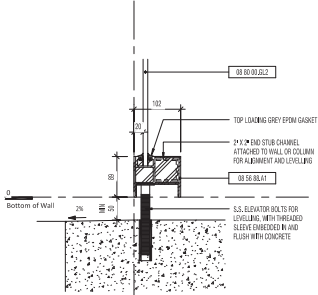
GLAZING



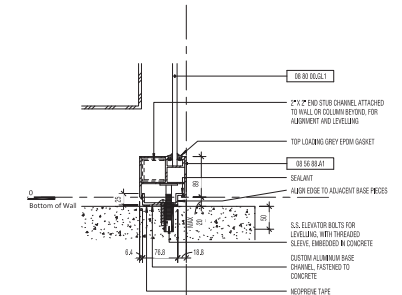
GLASS SCREEN - EXPLODED ISOMETRIC



9 GLAZING BASE AT GRADE - SECTION DETAIL A



10 RAKED GLAZING BASE - SECTION DETAIL



11 GLAZING BASE AT GRADE - SECTION DETAIL B

KEYNOTE LEGEND	
NO.	DESCRIPTION
05 14 00	STRUCTURAL ALUMINUM FRAMING
05 14 13	ARCHITECTURALLY EXPOSED STRUCTURAL ALUMINUM FRAMING
05 31 00.01	STEEL ROOF DECKING
05 50 00.01	3mm ALUMINUM PLATE
05 50 00.02	ALUMINUM GUTTER
05 50 00.04	ALUMINUM STUD SHIRT CONNECTION
07 42 41.01	ALUMINUM CEILING PANELS
07 54 20.01	PVC MEMBRANE ROOF ON 20mm 2x4 WOOD DECK
07 54 20.02	PVC MEMBRANE ROOF ON 10mm SHEATHING BOARD
08 56 00.01	CUSTOM ALUMINUM GLAZING SHOE
08 80 00.01	PRESESSLED GLAZING HEAD CHANNEL
08 80 00.02	STRUCTURAL INSULATION
08 80 00.03	FOAM CLEAR TEMPERED GLASS WITH PROTECTIVE COATING
08 80 00.04	ALUM EDGE TO ADVANCE BASE PICES
08 80 00.05	STAIN CLEAR TEMPERED GLASS
23 83 00.01	RADIANT INFRARED HEATERS - ELECTRIC
23 05 31.01	FUNCTION BOX
26 02 24.01	PHOTOCELL DAYLIGHTING SENSOR
26 50 00.01	PRESESSLED LINEAR LIGHT FIXTURE
27 51 16.01	PUBLIC ADDRESS SPEAKER
28 20 00.01	OUTDOOR CCTV CAMERA

NOTE: THIS DRAWING IS PROVIDED FOR INSTRUCTIONAL DESIGN PURPOSES ONLY BASED ON METROLINX GO SHELTER DESIGN GUIDELINES AND REQUIREMENTS. THE CONSULTANT SHALL VERIFY FOR LOCAL CODE COMPLIANCE, SPECIFIC SITE CONDITIONS AND INTERDISCIPLINARY DRAWING COORDINATION. ALL DIMENSIONS AND SPECIFICATIONS SHOULD BE VERIFIED BY CONSULTANT AND/OR CONTRACTOR BEFORE ACTUAL CONSTRUCTION BEGINS.

METROLINX PROJECT NO. XXXXXX

METRIC
ALL DIMENSIONS SHOWN
ARE IN METERS UNLESS
OTHERWISE NOTED

REFERENCE DRAWINGS		ISSUE		REVISIONS		DRAWN BY:	DESIGNED BY:	GO SHELTER DESIGNS GENERAL	
		1	2016/08/12	50% DETAILED DESIGN	1	2016/02/01	100% DETAILED DESIGN (DRAFT) - REVISED	ROOF AND GLAZING DETAILS	
		2	2016/10/07	75% DETAILED DESIGN				CONTRACT NO:	ROQ-2014-
		3	2016/10/27	100% DETAILED DESIGN (DRAFT)				DRAWING NO:	A9.1
		4	2016/08/02	100% DETAILED DESIGN				REV:	SHEET
									0.
REV:	REV:	NO:	DATE:	ISSUED FOR:	REV:	DATE:	SCALE:	FULL SIZE ONLY	
							1 : 5		



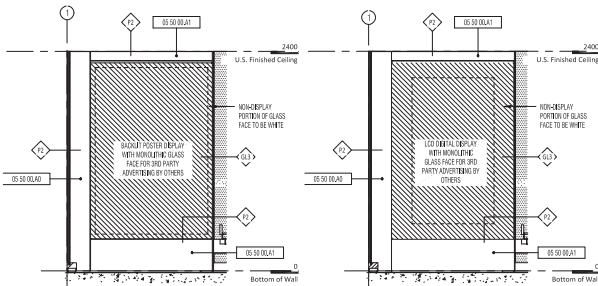
INFO / SERVICE WALL A

NOTE: INFO / SERVICE WALL A IS TO BE DEDICATED TO DISPLAYING 3RD PARTY ADVERTISING, EACH OF THE INTERIOR AND EXTERIOR DISPLAY SURFACES HAVE OPTIONS, INCLUDING THE SELECTION TO THE RIGHT, WHICH CAN BE COMBINED IN DIFFERENT WAYS, AT METROLINX'S DISCRETION, AS FOLLOWS:

1. INTERIOR (DIGITAL SCREEN WITH EXTERIOR BACKLIT POSTER DISPLAY) OPTION (REQUIRED FOR MAINTENANCE ACCESS)
2. INTERIOR (DIGITAL SCREEN WITH BLANK EXTERIOR) EXTERIOR (SCREEN FOR MAINTENANCE ACCESS)
3. INTERIOR (BLANK EXTERIOR BACKLIT POSTER DISPLAY) BOTH (SCREEN FOR MAINTENANCE ACCESS)
4. INTERIOR BACKLIT POSTER DISPLAY WITH BLANK EXTERIOR (EXTERIOR OPENS FOR MAINTENANCE ACCESS)

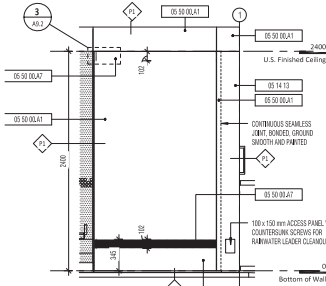
EACH OF THE INTERIOR SCREEN AND BACKLIT POSTER DISPLAY ARE TO BE SURROUNDED BY SCREENS.

THE DETAIL PLANS ON THIS SHEET SHOW EACH OF THE INTERIOR AND EXTERIOR OPTIONS, FROM THESE, THE DIFFERENT COMBINATIONS ABOVE CAN BE INTERPRETTED.



A1 INFO / SERVICE WALL INTERIOR ELEVATION - BACKLIT POSTER OPTION 1:25

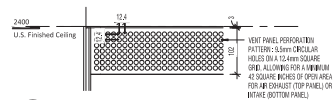
B1 INFO / SERVICE WALL INTERIOR ELEVATION - DIGITAL SCREEN OPTION 1:25



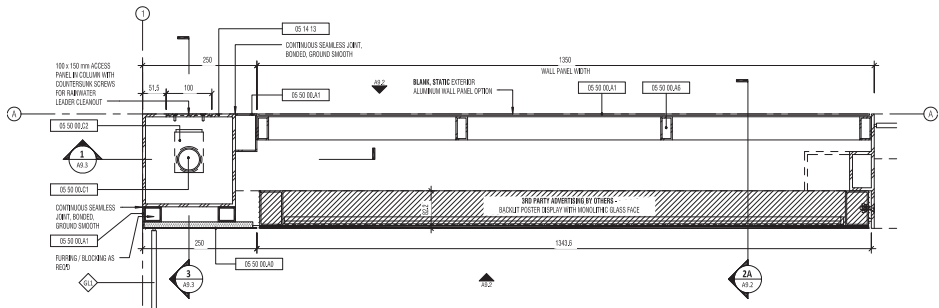
A2 INFO / SERVICE WALL EXTERIOR ELEVATION - BLANK OPTION 1:25

B2 INFO / SERVICE WALL EXTERIOR ELEVATION - BACKLIT POSTER OPTION 1:25

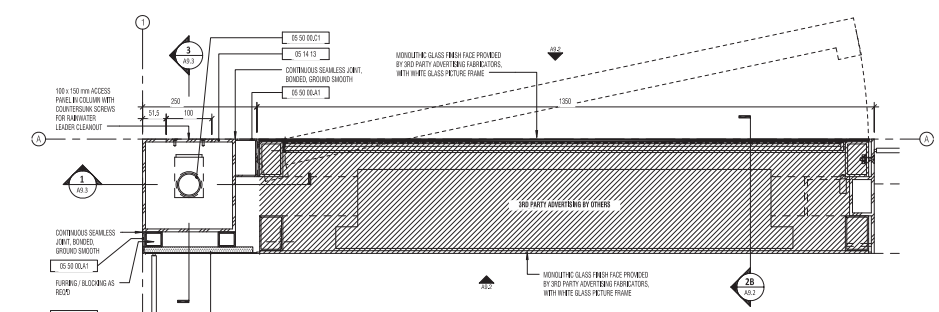
KEYNOTE LEGEND	
NO.	DESCRIPTION
05 30 00	CAST-IN-PLACE CONCRETE
05 14 00	STRUCTURAL ALUMINUM FRAMING
05 14 13	ARCHITECTURALLY EXPOSED STRUCTURAL ALUMINUM FRAMING
05 31 00.01	STEEL ROOF DECKING
05 50 00.00	ALUMINUM SHEET
05 50 00.01	3mm ALUMINUM PLATE
05 50 00.06	ALUMINUM FRAMING
05 50 00.07	3mm PERFORATED ALUMINUM PLATE
05 50 00.08	PVC RAINWATER LEADER
05 50 00.02	RAINWATER LEADER CLEANSUIT
05 50 00.05	ALUMINUM GUTTER
07 42 01.01	ALUMINUM LED BACK PANELS
07 54 20.02	PVC MEMBRANE ROOF ON 13mm SHEATHING BOARD
05 80 00.03.1	BRAN CLEAR LOW-IRON TEMPERED GLASS
05 80 00.03.2	SMALL LOW-IRON TEMPERED GLASS WITH WHITE CERAMIC ON BACK
05 27 20.01	LED SCREEN



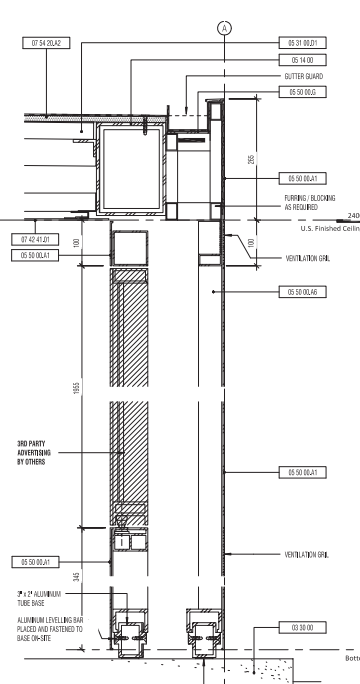
A3 INFO / SERVICE WALL EXTERIOR ELEVATION - PERFORATED VENT PANEL 1:25



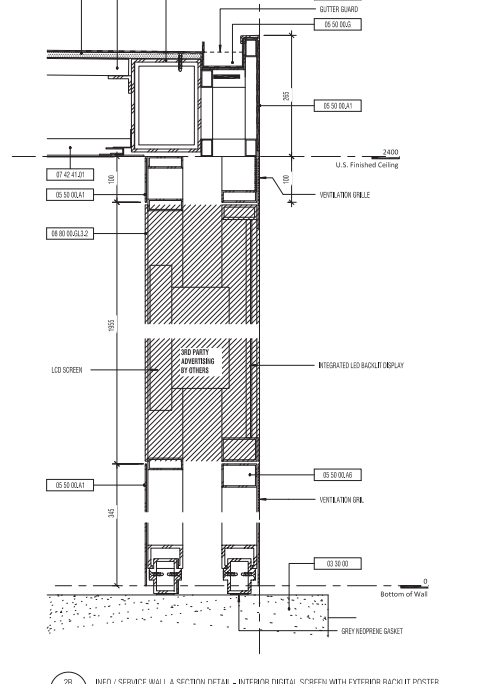
1A INFO / SERVICE WALL A PLAN DETAIL - INTERIOR BACKLIT POSTER DISPLAY WITH BLANK EXTERIOR 1:25



1B INFO / SERVICE WALL A PLAN DETAIL - INTERIOR DIGITAL SCREEN WITH EXTERIOR BACKLIT POSTER 1:25



2A INFO / SERVICE WALL A SECTION DETAIL - INTERIOR BACKLIT POSTER DISPLAY WITH BLANK EXTERIOR 1:15



2B INFO / SERVICE WALL A SECTION DETAIL - INTERIOR DIGITAL SCREEN WITH EXTERIOR BACKLIT POSTER 1:15

NOTE: THIS DRAWING IS PROVIDED FOR INSTRUCTIONAL DESIGN PURPOSES ONLY BASED ON METROLINX GO TRANSIT DESIGN COMPLIANCE AND REQUIREMENTS. THE CONSULTANT SHALL VERIFY FOR LOCAL CODE COMPLIANCE, SITE SPECIFIC CONDITIONS AND INTERDISCIPLINARY DRAWING COORDINATION. ALL DIMENSIONS AND SPECIFICATIONS SHOULD BE VERIFIED BY CONSULTANT AND/OR CONTRACTOR BEFORE ACTUAL CONSTRUCTION BEGINS.

METRIC
ALL DIMENSIONS SHOWN ARE IN METERS AND/OR MILLIMETERS UNLESS OTHERWISE NOTED

REV.	NO.	DATE	ISSUED FOR	REV.	NO.	DATE	ISSUED FOR

REFERENCE DRAWINGS	ISSUE	REVISIONS

DRAWN BY:	DESIGNED BY:
JDG	gh3

CHECKED BY:	APPROVED BY:
PH	PH
2016/07/26	2016/07/26

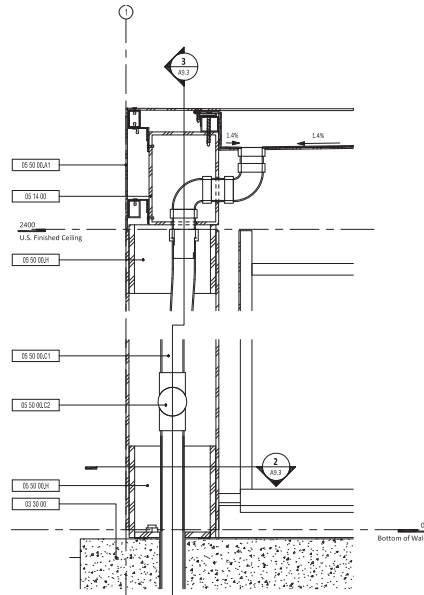
SCALE: FULL SIZE ONLY
As indicated



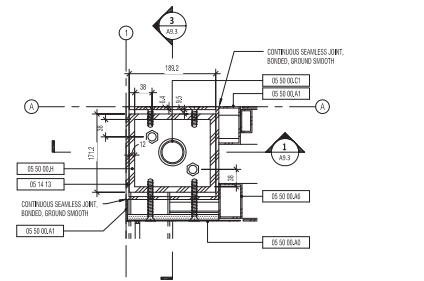
GO SHELTER DESIGNS
GENERAL
INFO / SERVICE WALL A DETAILS

METROLINX PROJECT NO. XXXXXX

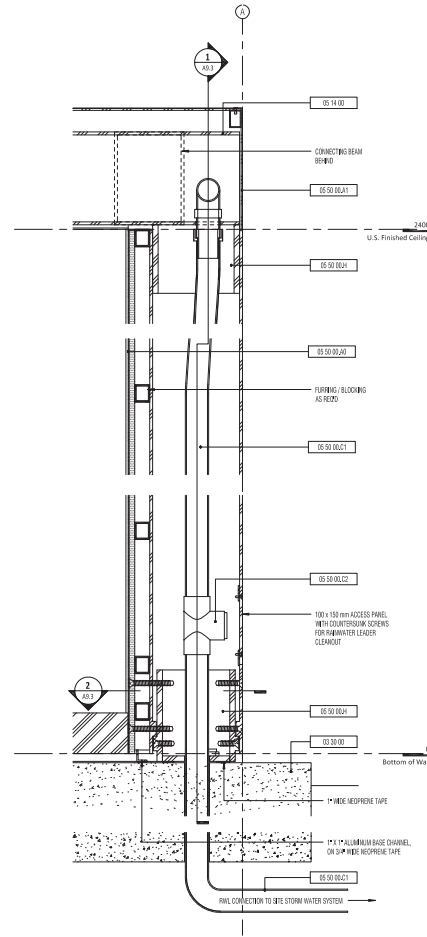
CONTRACT NO: R00-2014- CON-06.1	DRAWING NO: A9.2	REV. SHEET 0. 1
---------------------------------------	---------------------	--------------------



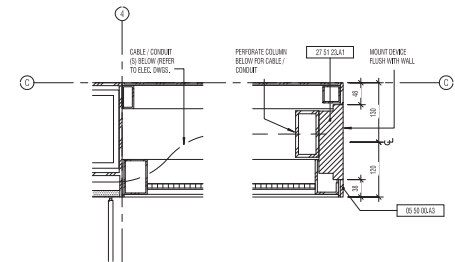
1 INFO / SERVICE WALL A COLUMN SECTION DETAIL 1
1:5



2 COLUMN BASE PLAN DETAIL
1:5



3 INFO / SERVICE WALL COLUMN SECTION DETAIL 2
1:5



4 INFO - SERVICE WALL A (SIP Station)
1:5

KEYNOTE LEGEND	
NO.	DESCRIPTION
OS 30.00	COST-BURFACE CONCRETE
OS 14.00	STRUCTURAL ALUMINUM FRAMING
OS 14.13	ARCHITECTURAL ALUMINUM FRAMING
OS 50.00A0	ALUMINUM SHEET
OS 50.00A1	3mm ALUMINUM PLATE
OS 50.00A3	6.4mm ALUMINUM PLATE
OS 50.00A6	ALUMINUM FRAMING
OS 50.00C1	PVC RAINWATER LEADER
OS 50.00C2	RAINWATER LEADER CLEANOUT
OS 50.00C4	ALUMINUM STUD SHIRT CONNECTION
OS 50.22A1	TRUNKWAY COMMUNICATION DEVICE

NOTE:
THIS DRAWING IS PROVIDED FOR INSTRUCTIONAL DESIGN PURPOSES ONLY BASED ON METROLINX GO SHELTER DESIGN GUIDELINES AND REQUIREMENTS. THE CONSULTANT SHALL VERIFY FOR LOCAL CODE COMPLIANCE, SPECIFIC SITE CONDITIONS AND INTERDISCIPLINARY DRAWING COORDINATION. ALL DIMENSIONS AND SPECIFICATIONS SHOULD BE VERIFIED BY CONSULTANT AND/OR CONTRACTOR BEFORE ACTUAL CONSTRUCTION BEGINS.

METROLINX PROJECT NO. XXXXXX

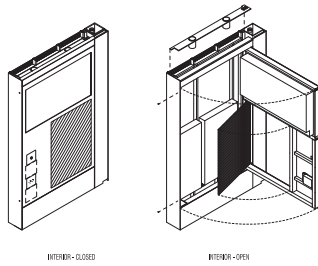
METRIC
ALL DIMENSIONS SHOWN
ARE IN METERS AND/OR
MILLIMETERS UNLESS
OTHERWISE NOTED

REFERENCE DRAWINGS		ISSUE		REVISIONS		DRAWN BY:	DESIGNED BY:	GO SHELTER DESIGNS GENERAL	
		1	2016/08/12	50% DETAILED DESIGN	1	2016/02/01	100% DETAILED DESIGN (DRAFT) - REVISED	INFO / SERVICE WALL A DETAILS	
		2	2016/10/07	75% DETAILED DESIGN				CONTRACT NO: R00-2014-	
		3	2016/10/27	100% DETAILED DESIGN (DRAFT)				DRAWING NO: A9.3	
		4	2016/08/02	100% DETAILED DESIGN				REV: SHEET	
								0.	
REV:	REV:	NO:	DATE:	ISSUED FOR:	REV:	DATE:	SCALE:	FULL SIZE ONLY	
							1 : 5	MET	

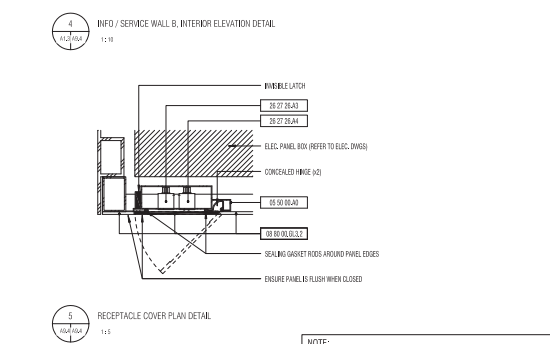
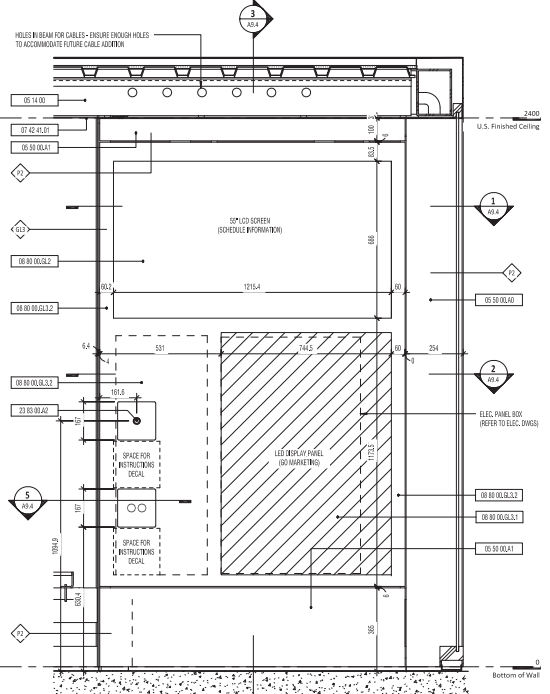
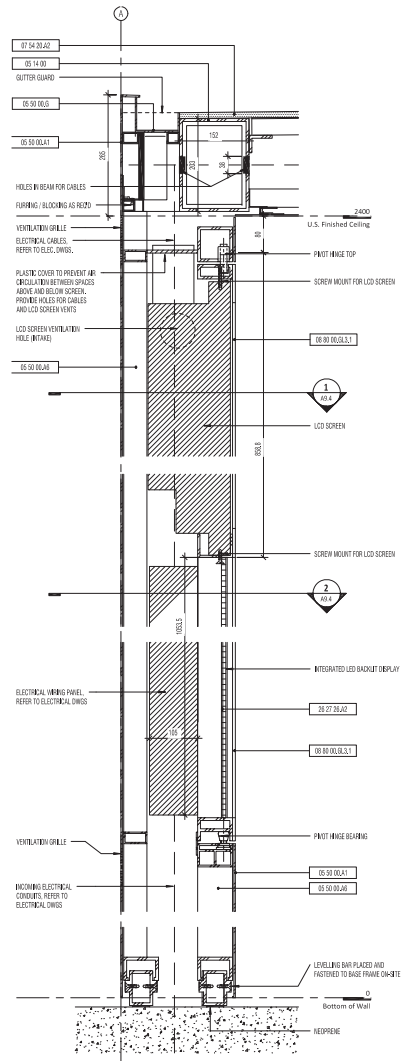
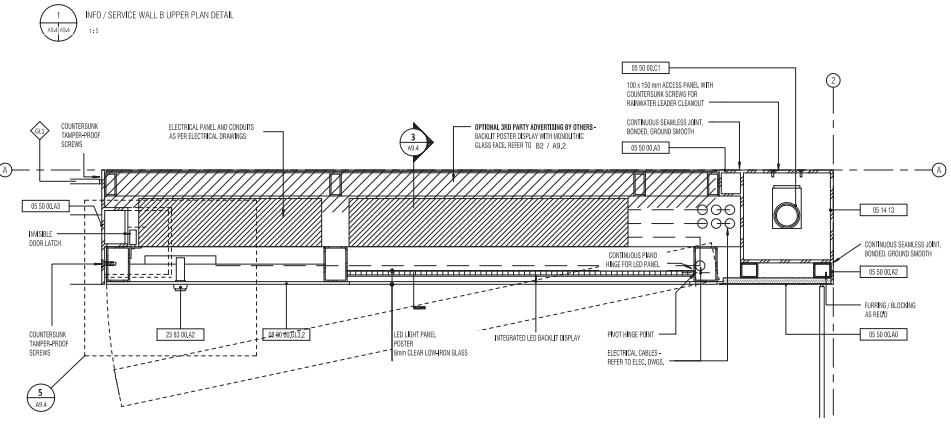
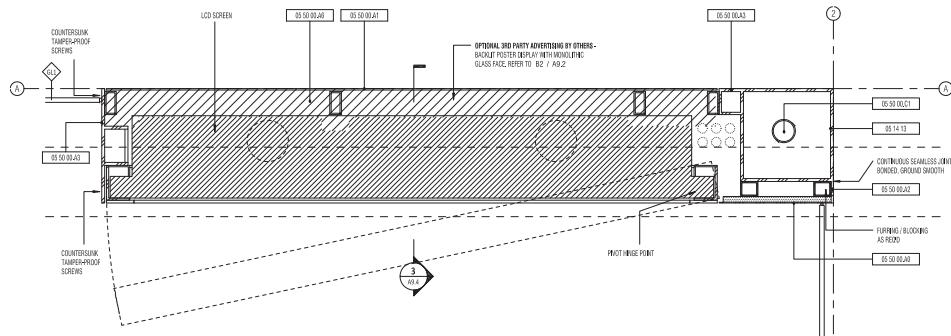


INFO / SERVICE WALL B

NOTE: INFO / SERVICE WALL B IS TO BE DEDICATED TO DISPLAYING SCHEDULE INFORMATION AND/OR MARKETING. PROVIDING ADVERTISING SPACE AFTER CONSULTATION WITH THE CONTRACTOR AND CHAIRMAN. CONSIDER PROVIDING A GLASS ALUMINUM SYSTEM WALL, OR WITH AN EXTERIOR BACKUP POSTER DISPLAY FOR LEAD PARTY ADVERTISING PROVIDED BY OTHERS.



NO.	DESCRIPTION
05 14 00	STRUCTURAL ALUMINUM FRAMING
05 14 10	ARCHITECTURALLY EXPOSED STRUCTURAL ALUMINUM FRAMING
05 50 00.00	ALUMINUM SHEET
05 50 00.01	3mm ALUMINUM PLATE
05 50 00.02	5mm ALUMINUM PLATE
05 50 00.03	6.4mm ALUMINUM PLATE
05 50 00.06	ALUMINUM FRAMING
05 50 00.01	PVC SUBWATER LEADER
05 50 00.05	ALUMINUM GUTTER
07 42 01.01	ALUMINUM CERAMIC PANELS
07 54 20.02	PVC MEMBRANE ROOF ON 13mm SHEATHING BOARD
08 80 00.02	TINTED CLEAR TEMPERED GLASS
08 80 00.03.1	SHIM CLEAR LOW-IRON TEMPERED GLASS
08 80 00.03.2	SHIM LOW-IRON TEMPERED GLASS WITH WHITE CERAMIC ON BACK
23 83 00.00	HEATER CONTROL BUTTON
26 27 26.01	LED SCREEN
26 27 26.02	LED LIGHT PANEL
26 27 26.03	SPRINKER RECEPTACLE
26 27 26.04	USB CHARGING RECEPTACLE



NOTE: THIS DRAWING IS PROVIDED FOR INSTRUCTIONAL DESIGN PURPOSES ONLY BASED ON METROLINX GO TRANSIT DESIGN GUIDELINES AND REQUIREMENTS. THE CONSULTANT SHALL VERIFY FOR LOCAL CODE COMPLIANCE, SIZE, TYPE, CONDITIONS AND INTER-DISCIPLINARY DRAWING COORDINATION. ALL DIMENSIONS AND SPECIFICATIONS SHOULD BE VERIFIED BY CONSULTANT AND/OR CONTRACTOR BEFORE ACTUAL CONSTRUCTION BEGINS.

METROLINX PROJECT NO. XXXXXX

METRIC
ALL DIMENSIONS SHOWN IN METERS UNLESS OTHERWISE NOTED

REV.	REV.	NO.	DATE	ISSUED FOR	REV.	DATE

REFERENCE DRAWINGS	ISSUE	REVISIONS	DRAWN BY:	DESIGNED BY:
	1 2015/08/12 50% DETAILED DESIGN	1 2016/02/01 100% DETAILED DESIGN (DRAFT) - REVISED	JDG	gh3
	2 2015/10/07 75% DETAILED DESIGN			
	3 2016/01/27 100% DETAILED DESIGN (DRAFT)			
	4 2016/08/02 100% DETAILED DESIGN			
			CHECKED BY: PH 2016/07/26	APPROVED BY: PH 2016/07/26
			SCALE: FULL SIZE ONLY	
			As indicated	

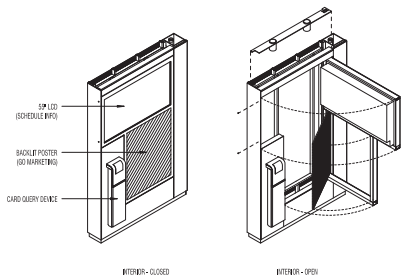


GO SHELTER DESIGNS
GENERAL

INFO / SERVICE WALL B DETAILS

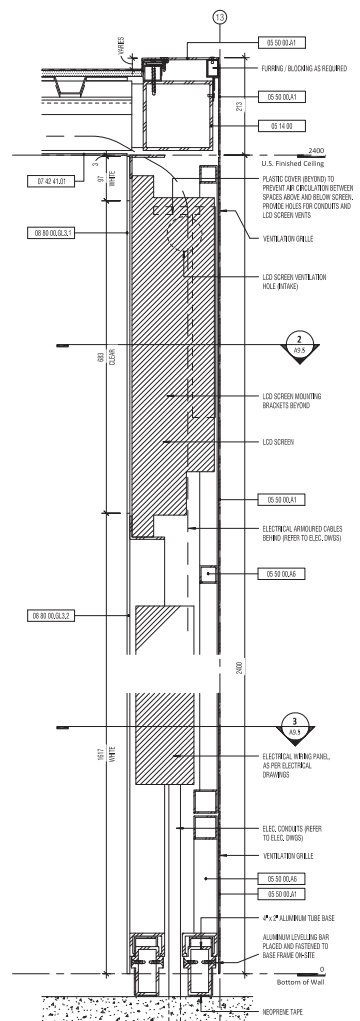
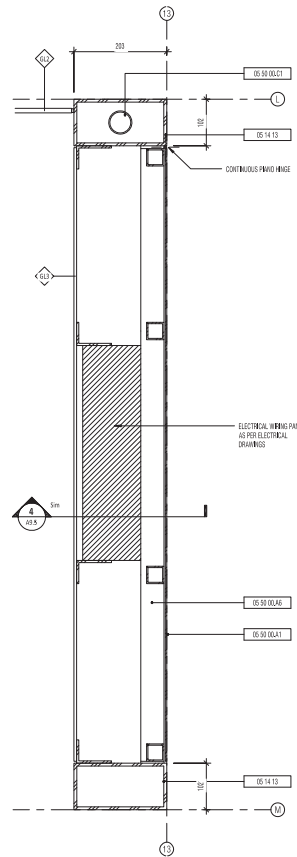
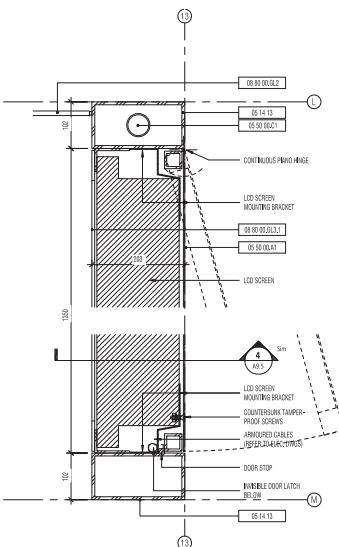
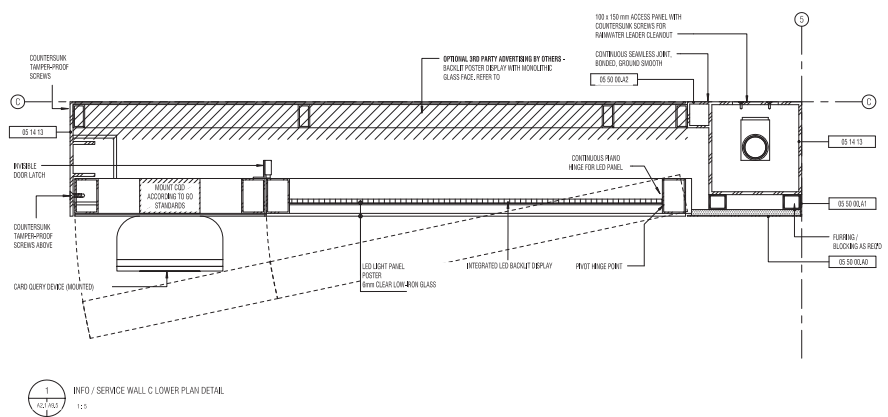
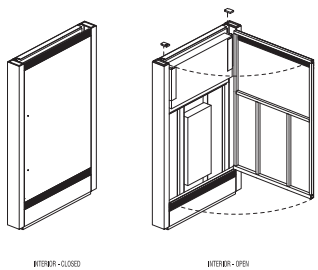
CONTRACT NO: R00-2014- CON-06.1	DRAWING NO: A9.4	REV. SHEET 0.
---------------------------------------	---------------------	------------------

TYPE C INFO / SERVICE WALL



KEYNOTE LEGEND	
NO.	DESCRIPTION
05 14 00	STRUCTURAL ALUMINUM FRAMING
05 14 13	ARCHITECTURALLY-EXPOSED STRUCTURAL ALUMINUM FRAMING
05 50 00.00	ALUMINUM SHEET
05 50 00.01	6mm ALUMINUM PLATE
05 50 00.02	6mm ALUMINUM PLATE
05 50 00.06	ALUMINUM FRAMING
07 02 41.01	ALUMINUM CEILING PANELS
08 00 00.00.2	10MM CLEAR TEMPERED GLASS
08 00 00.00.1	8MM CLEAR LOW-RON TEMPERED GLASS
08 00 00.00.3	8MM LOW-RON TEMPERED GLASS WITH WHITE CERAMIC ON BACK
08 27 00.01	LED SCREEN

TYPE 6 INFO / SERVICE WALL



METRIC
ALL DIMENSIONS SHOWN ARE IN METERS UNLESS OTHERWISE NOTED

REFERENCE DRAWINGS		ISSUE		REVISIONS	
	1	2015/08/12	50% DETAILED DESIGN	1	2016/02/01
	2	2015/10/07	75% DETAILED DESIGN		
	3	2016/03/27	100% DETAILED DESIGN (DRAFT)		
	4	2016/06/02	100% DETAILED DESIGN		
REV:		REV:		NO:	DATE:

DRAWN BY: JCG
DESIGNED BY: gh3
CHECKED BY: PH
APPROVED BY: PH
2016/07/26
SCALE: 1:5
FULL SIZE ONLY



GO SHELTER DESIGNS
GENERAL
ADDITIONAL INFO / SERVICE WALL DETAILS
CONTRACT NO: R00-2014- CON-06.1
DRAWING NO: A9.5
REV: SHEET 0.

NOTE: THIS DRAWING IS PROVIDED FOR INSTRUCTIONAL DESIGN PURPOSES ONLY BASED ON METROLINX GO TRANSIT DESIGN GUIDELINES AND REQUIREMENTS. THE CONSULTANT SHALL VERIFY FOR LOCAL CODE COMPLIANCE, SITE SPECIFIC CONDITIONS AND INTERDISCIPLINARY DRAWING COORDINATION. ALL DIMENSIONS AND SPECIFICATIONS SHOULD BE VERIFIED BY CONSULTANT AND/OR CONTRACTOR BEFORE ACTUAL CONSTRUCTION BEGINS.

METROLINX PROJECT NO. XXXXXX

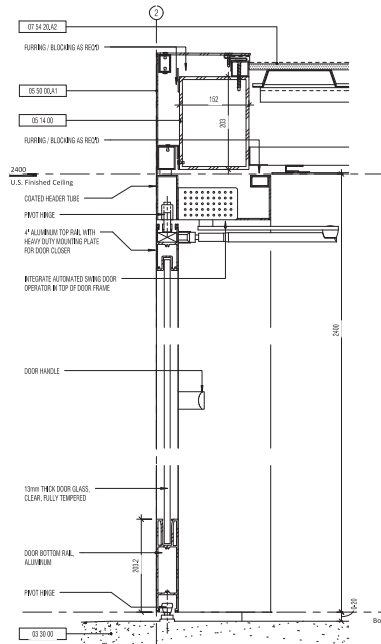
DOOR FRAME



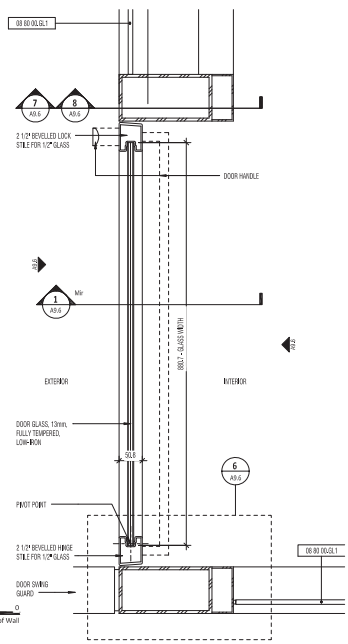
INTERIOR



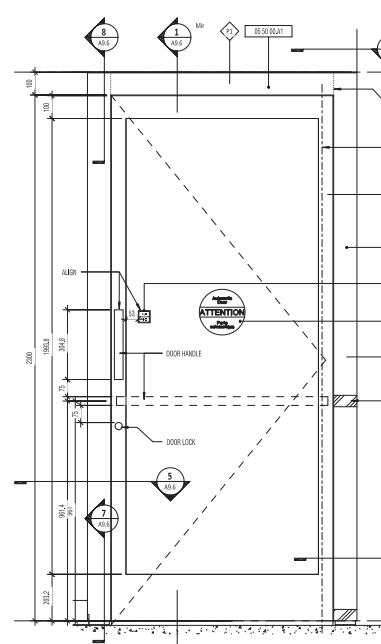
EXTERIOR



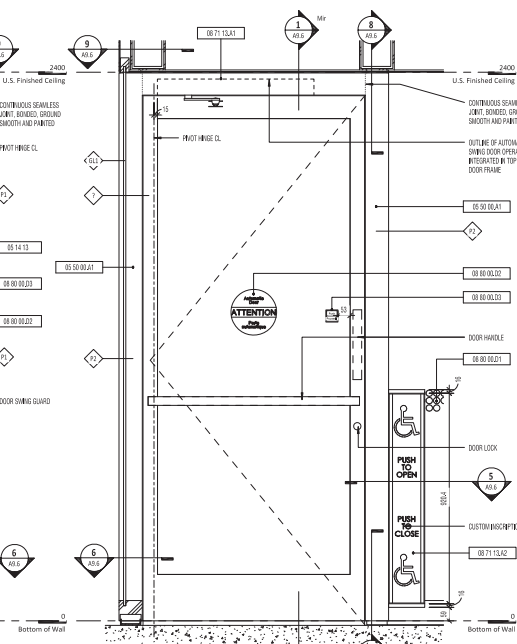
1 DOOR SECTION DETAIL
1:15



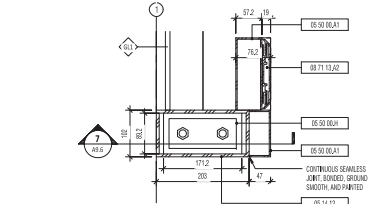
2 DOOR FRAME PLAN DETAIL
1:15



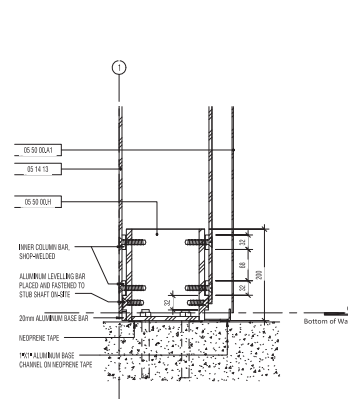
3 DOOR FRAME EXTERIOR ELEVATION DETAIL
1:10



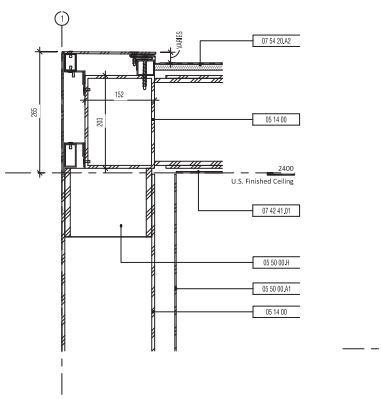
4 DOOR FRAME INTERIOR ELEVATION DETAIL
1:10



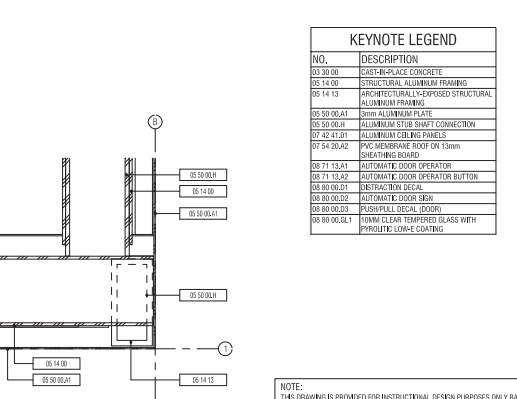
5 INTERIOR DOOR BUTTON PLAN DETAIL
1:15



7 DOOR FRAME BASE SECTION DETAIL
1:15



8 DOOR FRAME TOP SECTION DETAIL
1:15



9 ROOF CORNER PLAN SECTION DETAIL
1:15

KEYNOTE LEGEND	
NO.	DESCRIPTION
03 30 00	CAST-IN-PLACE CONCRETE
05 14 00	STRUCTURAL ALUMINUM FRAMING
05 14 13	ARCHITECTURALLY-EXPOSED STRUCTURAL ALUMINUM FRAMING
05 50 00.01	3mm ALUMINUM GLASS PLATE
05 50 00.01	ALUMINUM STUB SHAFT CONNECTION
07 42 41.01	ALUMINUM CBLM PANELS
07 54 20.02	PVC MEMBRANE ROOF OR 15mm SHEATHING BOARD
08 71 13.01	AUTOMATIC DOOR OPERATOR
08 71 13.02	AUTOMATIC DOOR OPERATOR BLUTTON
08 80 00.01	ALUMINUM CBLM PANELS
08 80 00.02	AUTOMATIC DOOR SIGN
08 80 00.03	PERSONNEL IDENTIFICATION
08 80 00.04	10MM CLEAR TEMPERED GLASS WITH PYROLYTIC LOW-E COATING

NOTE: THIS DRAWING IS PROVIDED FOR INSTRUCTIONAL DESIGN PURPOSES ONLY BASED ON METROLINX GO TRANSIT DESIGN GUIDELINES AND REQUIREMENTS. THE CONSULTANT SHALL VERIFY FOR LOCAL CODE COMPLIANCE, SPECIFIC SITE CONDITIONS AND INTERDISCIPLINARY DRAWING COORDINATION. ALL DIMENSIONS AND SPECIFICATIONS SHOULD BE VERIFIED BY CONSULTANT AND/OR CONTRACTOR BEFORE ACTUAL CONSTRUCTION BEGINS.

METRIC
ALL DIMENSIONS SHOWN ARE IN METERS AND/OR MILLIMETERS UNLESS OTHERWISE NOTED

METROLINX PROJECT NO. XXXXXX

REFERENCE DRAWINGS		ISSUE		REVISIONS			
		1	2015/08/12	50% DETAILED DESIGN	1	2016/02/01	100% DETAILED DESIGN (DRAFT)-REVISED
		2	2015/10/07	75% DETAILED DESIGN			
		3	2016/03/27	100% DETAILED DESIGN (DRAFT)			
		4	2016/08/02	100% DETAILED DESIGN			
REV:	REV:	NO:	DATE:	ISSUED FOR:	REV:	DATE:	

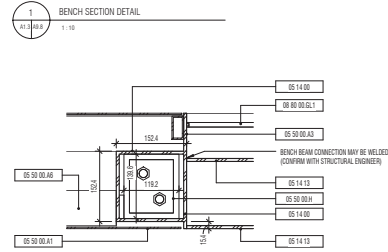
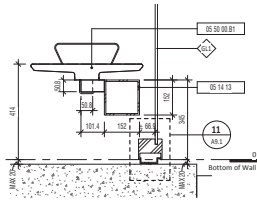
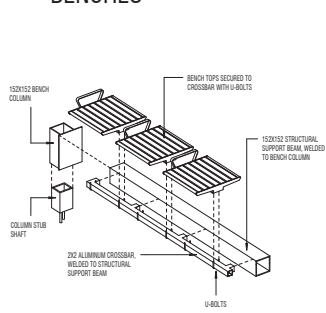
DRAWN BY: JDG
DESIGNED BY: gh3
CHECKED BY: PH
2016/07/26
APPROVED BY: PH
2016/07/26
SCALE: FULL SIZE ONLY
As indicated



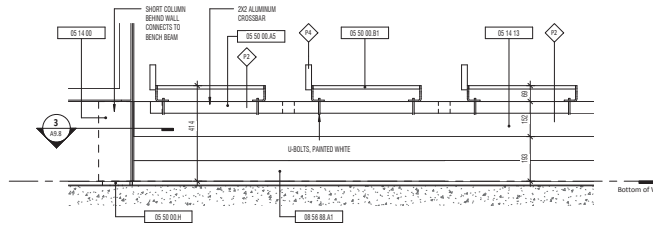
GO SHELTER DESIGNS
GENERAL
DOOR FRAME DETAILS

CONTRACT NO: RQD-2014- CON-06.1	DRAWING NO: A9.6	REV: 0.	SHEET 0.
---------------------------------------	---------------------	------------	-------------

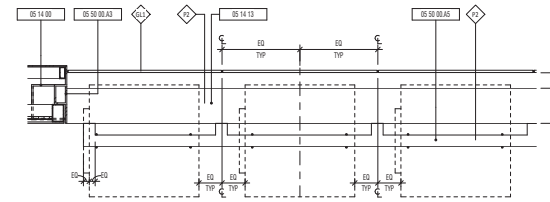
BENCHES



3 BENCH BASE PLAN DETAIL
1:5



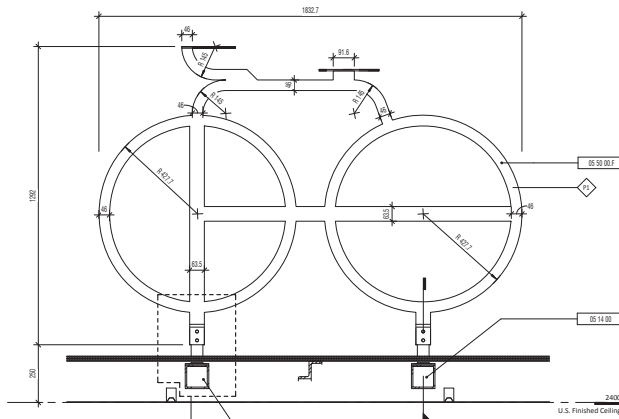
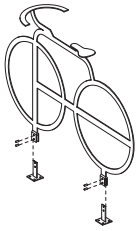
2 BENCH ELEVATION DETAIL
1:10



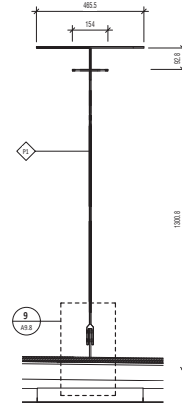
4 BENCH PLAN DETAIL
1:10

KEYNOTE LEGEND	
NO.	DESCRIPTION
05 14 00	STRUCTURAL ALUMINUM FRAMING
05 14 13	ARCHITECTURALLY EXPOSED STRUCTURAL ALUMINUM FRAMING
05 50 00 A1	5mm ALUMINUM PLATE
05 50 00 A3	6.4mm ALUMINUM PLATE
05 50 00 A5	ALUMINUM EXTRUSION
05 50 00 B8	ALUMINUM FRAMING
05 50 00 B1	BENCH SEATS
05 50 00 7	ALUMINUM BIKE SYMBOL
05 50 00 H	ALUMINUM STUB SHAFT CONNECTION
07 54 20 A1	PVC MEMBRANE ROOF ON 22mm PLYWOOD DECK
08 56 88 A1	CUSTOM ALUMINUM GLAZING SHOE
08 80 00 G1	10MM CLEAR TEMPERED GLASS WITH PYROLYTIC LOW-E COATING

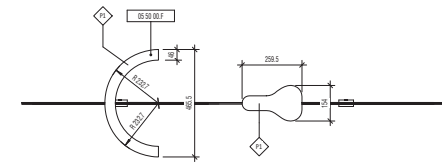
GO BIKE SYMBOL



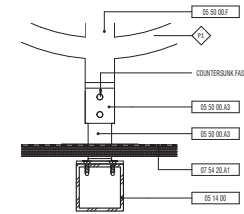
5 BIKE SYMBOL LONG ELEVATION
1:10



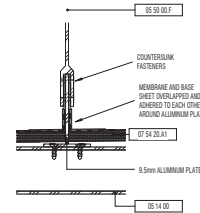
6 BIKE SYMBOL SHORT ELEVATION
1:10



7 BIKE PLAN DETAIL
1:10



8 BIKE SYMBOL BASE SECTION DETAIL 1
1:5



9 BIKE SYMBOL BASE SECTION DETAIL 2
1:5

METRIC

ALL DIMENSIONS SHOWN ARE IN METERS AND/OR MILLIMETERS UNLESS OTHERWISE NOTED.

REV:	NO:	DATE:	ISSUED FOR:	REV:	DATE:

REFERENCE DRAWINGS	ISSUE	REVISIONS

DRAWN BY: JDC	DESIGNED BY: gh3
CHECKED BY: PH 2016/07/26	APPROVED BY: PH 2016/07/26
SCALE: As indicated	FULL SIZE ONLY

gh3 architecture
750-55 Doughty Avenue Toronto ON M6J 2N6
416 815 1751 416 815 1753 www.gh3.ca



GO SHELTER DESIGNS
GENERAL
FURNISHINGS DETAILS

METROLINX PROJECT NO. XXXXXX

CONTRACT NO: R0-2014- C0N-061	DRAWING NO: A9.8	REV: 0.	SHEET
-------------------------------------	---------------------	------------	-------

LUMINAIRE SYMBOLS

	SURFACE / RECESSED LUMINAIRE LETTERS INDICATES TYPE TYPICAL FOR ALL LIGHTS
	SURFACE / RECESSED DOWN LIGHT - SQUARE SHAPE
	SURFACE / RECESSED DOWN LIGHT - ROUND SHAPE
	WALL MOUNT LUMINAIRE - LINEAR
	WALL MOUNT LUMINAIRE - ROUND SHAPE
	WALL MOUNT LUMINAIRE - SQUARE SHAPE
	SURFACE MOUNT STRIP LUMINAIRE
	TRACK LIGHTING - TRIANGLES REPRESENT NUMBER OF HEADS
	NIGHT LIGHT
	SINGLE LUMINAIRE EXTERIOR LAMP STANDARD
	DOUBLE LUMINAIRE EXTERIOR LAMP STANDARD
	LANDSCAPE SPOT LIGHT
	EMERGENCY LIGHTING BATTERY PACK
	EMERGENCY LIGHTING BATTERY PACK WITH REMOTE HEADS
	EMERGENCY LOW VOLTAGE REMOTE HEAD - WALL MOUNTED
	EMERGENCY LOW VOLTAGE REMOTE HEAD - CEILING MOUNTED
	EXIT LIGHT - CEILING MOUNTED LINES OR ARROWS ON BOTH SIDES INDICATED DOUBLE SIDED SIGN, TYPICAL
	EXIT LIGHT - WALL MOUNTED
	EXIT LIGHT WITH REMOTE HEADS - CEILING MOUNTED
	EXIT LIGHT WITH REMOTE HEADS - WALL MOUNTED

LIGHTING CONTROL

LINE VOLTAGE SWITCH:	
	3 - 3 WAY
	4 - 4 WAY
	D - DIMMER
	F - FAN SWITCH
	P - LOW PILOT LIGHT
	V - VARIABLE SPEED
	T - TIMER
	S - SWITCHING CIRCUIT
	LINE VOLTAGE OCCUPANCY SENSOR - WALL MOUNTED
	LINE VOLTAGE OCCUPANCY SENSOR - CEILING MOUNTED
	LINE VOLTAGE COMBINATION OCCUPANCY SENSOR AND SWITCH
	LOW VOLTAGE SWITCH
	LOW VOLTAGE MASTER SWITCH
	LOW VOLTAGE COMBINATION OCCUPANCY SENSOR AND SWITCH
	LOW VOLTAGE OCCUPANCY SENSOR - WALL MOUNTED
	LOW VOLTAGE OCCUPANCY SENSOR - CEILING MOUNTED
	PHOTOCELL
	TIME CLOCK

COMMUNICATIONS SYMBOLS

	DATA OUTLET
	TELEPHONE OUTLET
	CONVENTION DATA - TELEPHONE OUTLET
	CATV OUTLET
	SPECIAL PURPOSE COMMUNICATIONS OUTLET
	WIRELESS ACCESS POINT
	PATCH PANEL
	COMMUNICATIONS DATA RACK

SOUND SYSTEM SYMBOLS

	MICROPHONE
	PAGING STATION
	AMBIENT NOISE LEVEL SENSOR
	AMPLIFIER
	SPEAKER - CEILING MOUNTED
	SPEAKER - WALL MOUNTED
	VOLUME CONTROL
	SOUND MASKING SPEAKER
	SOUND SYSTEM HORN
	SOUND SYSTEM BUZZER
	SOUND SYSTEM BELL
	LOCAL INTERCOM MASTER STATION
	LOCAL INTERCOM STAFF STATION
	LOCAL INTERCOM DOOR STATION

POWER SYMBOLS

	15AMP 125 VOLT WALL MOUNT / COUNTER HEIGHT DUPLEX RECEPTACLE
	15AMP 125 VOLT WALL MOUNT / COUNTER HEIGHT GROUND FAULT CIRCUIT INTERRUPTER (GFI) DUPLEX RECEPTACLE
	15AMP 125 VOLT WALL MOUNT / COUNTER HEIGHT ISOLATED GROUND (IG) DUPLEX RECEPTACLE
	15AMP 125 VOLT WALL MOUNT / COUNTER HEIGHT ARC FAULT CIRCUIT INTERRUPTER (AFCI) DUPLEX RECEPTACLE
	15AMP 125 VOLT WALL MOUNT / COUNTER HEIGHT SWITCHED DUPLEX RECEPTACLE
	15AMP 125 VOLT WALL MOUNT / COUNTER HEIGHT QUAD RECEPTACLE
	15AMP 125 VOLT WALL MOUNT / COUNTER HEIGHT GROUND FAULT CIRCUIT INTERRUPTER (GFI) QUAD RECEPTACLE
	15AMP 125 VOLT WALL MOUNT / COUNTER HEIGHT SINGLE RECEPTACLE
	20AMP 125 VOLT WALL MOUNT / COUNTER HEIGHT T-SLOT QUAD RECEPTACLE
	20AMP 125 VOLT WALL MOUNT / COUNTER HEIGHT T-SLOT DUPLEX RECEPTACLE
	20AMP 125 VOLT WALL MOUNT / COUNTER HEIGHT T-SLOT QUAD RECEPTACLE
	20AMP 125 VOLT WALL MOUNT / COUNTER HEIGHT T-SLOT QUAD RECEPTACLE
	SPECIAL RECEPTACLE AS NOTED ON PLAN
	SPECIAL RECEPTACLE AS NOTED ON PLAN
	PACK POLE
	ELECTRICAL JUNCTION BOX
	GROUNDING ROD
	GROUNDING BAR
	CLOCK - WALL MOUNTED
	CLOCK - CEILING MOUNTED
	PARKING LOT RECEPTACLE - SINGLE / DOUBLE
	ELECTRIC BASEBOARD HEATER # DENOTES UNIT IDENTIFICATION
	208 VOLT RECESSED ELECTRICAL PANEL
	600 VOLT RECESSED ELECTRICAL PANEL
	208 VOLT SURFACE MOUNT ELECTRICAL PANEL
	600 VOLT SURFACE MOUNT ELECTRICAL PANEL
	MAIN / CENTRAL DISTRIBUTION CENTER OR SMARTGEAR
	ELECTRICAL MOTOR CONNECTION
	ELECTRICAL MOTOR CONNECTION WITH STARTER REFER TO MECHANICAL EQUIPMENT SCHEDULE FOR MORE INFORMATION
	ELECTRICAL GENERATOR
	(#) MECHANICAL EQUIPMENT TAG REFER TO EQUIPMENT SCHEDULE # DENOTES UNIT IDENTIFICATION
	(#) ELECTRICAL KEYED NOTE REFER TO SCHEDULE. # DENOTES KEYED NOTE NUMBER.
	CEILING MOUNTED RECEPTACLE
	FLOOR MOUNTED RECEPTACLE

SECURITY SYSTEM SYMBOLS

	REQUEST TO EXIT
	PUSH BUTTON
	AUDIBLE PRE-ALARM WARNING DEVICE
	MOTION DETECTOR
	MAGNETIC DOOR LOCK
	LOCAL ALARM
	SECURITY ALARM KEYPAD
	INFRARED BEAM FOR RELEASING MAGNETIC DOOR LOCKS
	SECURITY GLASS BREAK SENSOR
	ELECTRIC DOOR STRIKE
	DOOR CONTACT
	SECURITY ALARM CONTROL PANEL
	CARD READER
	AUDIBLE SIREN
	CCTV CAMERA

FIRE ALARM SYMBOLS

	SMOKE DETECTOR
	DUCT SMOKE DETECTOR
	HEAT DETECTOR
	CARBON MONOXIDE DETECTOR
	SMOKE ALARM
	MANUAL PULL STATION
	SPRINKLER TAMPER SWITCH
	SPRINKLER ALARM ISOLATION VALVE
	SPRINKLER PRESSURE SWITCH
	SPRINKLER FLOW SWITCH
	MONITOR MODULE
	CONTROL MODULE
	ISOLATION MODULE
	STROBE LIGHT
	HORN
	COMBINATION HORN / STROBE LIGHT
	EVAC SPEAKER
	COMBINATION EVAC SPEAKER / STROBE
	BUZZER
	BELL
	FIREMAN'S HANDSET
	DOOR HOLDER
	FIRE ALARM TERMINATION CABINET
	REMOTE ANNUNCIATION PANEL
	FIRE ALARM CONTROL PANEL
	CENTRAL ALARM CONTROL FACILITY

SINGLE LINE SYMBOLS

	BREAKER
	FUSE
	DRAW OUT BREAKER
	DRAW OUT FUSE
	SOLID SWITCH DISCONNECT SWITCH
	INTERNAL FUSED DISCONNECT
	INTERNAL MOTOR STARTER
	EXTERNAL SOLID DISCONNECT SWITCH
	EXTERNAL FUSED DISCONNECT SWITCH
	CONTACTOR
	UNINTERRUPTIBLE POWER SUPPLY
	TRANSIENT VOLTAGE SURGE PROTECTOR
	SHUNT TRIP RELAY
	2-HOUR FIRE RATED CABLES
	UTILITY METER
	INFORMATION METER
	GROUND CONNECTION - EARTH POTENTIAL
	CURRENT TRANSFORMER
	ELECTRICAL TRANSFORMER - DELTA - WYE
	ELECTRICAL PANEL BOARD
	AUTOMATIC TRANSFER SWITCH

ABBREVIATIONS

A	AMPERE	NCB	MAIN CIRCUIT BREAKER
AT	AMPERE TRIP	NH	NOTHING HEIGHT
AF	AMPERE FRAME	NLD	MAIN LUGS ONLY
AFB	ABOVE FINISHED FLOOR	MOCP	MINIMUM OVERCURRENT PROTECTION
AWG	AMERICAN WIRE GAUGE	NTD	NO TIME DETECTION
C	CONDUIT	N	NEUTRAL
CACF	CENTRAL ALARM CONTROL FACILITY	P	POLE OR PHASE
CB	CIRCUIT BREAKER	PNL	PANEL BOARD
CCF	CIRCUIT	QTY	QUANTITY
EC	EMPTY CONDUIT	REC	RECESSED
EA	EXITING TO ROOM	RL	RELOCATE EXISTING DEVICE
FA	FULL LOAD AMPS	RM	REMOVE EXISTING DEVICE
FLA	FUSED SAFETY SWITCH	RR	REMOVE AND REPLACE WITH NEW DEVICE
GFI	GFI GROUND FAULT INTERRUPTER	V	VOLTAGE / VOLTS
GND	GROUND	W	WATTS
HP	HORSEPOWER	WP	WEATHERPROOF
IG	ISOLATED GROUND	XFMR	TRANSFORMER
KVA	KILOVOLT AMPERES		
MCA	MINIMUM CIRCUIT AMPACITY		

SHEET LIST

No.	DESCRIPTION
E0.1	ELECTRICAL SYMBOLS LEGEND
E0.2	ELECTRICAL INTERCONNECTION DIAGRAM
E1.1	SHELTER TYPE 1 - RAIL LINE STATIONS PASSENGER SHELTER - POWER AND LIGHTING PLANS
E2.1	SHELTER TYPE 2 - CARPOOL LOTS PASSENGER SHELTER - POWER AND LIGHTING PLANS
E2.2	SHELTER TYPE 2 - CARPOOL LOTS PASSENGER SHELTER - HEAT TRACE PLAN
E3.1	SHELTER TYPE 3 - ON STREET BUS PASSENGER SHELTER - POWER PLAN
E4.1	SHELTER TYPE 4 - SMALL BIKE SHELTER - POWER AND LIGHTING PLANS
E5.1	SHELTER TYPE 5 - LARGE BIKE SHELTER - POWER AND LIGHTING PLANS
E6.1	SHELTER TYPE 6 - AMENITIES SHELTER - POWER AND LIGHTING PLANS

TAG	DESCRIPTION	MODEL	LOCATION	POWER	VOLTAGE	LAMP TYPE	INITIAL ILLUMINANCE	CCT	CRI	REMARKS	QUANTITY
A1	LINEAR LED LUMINAIRE WITH MINIMUM IP68 INGRESS PROTECTION, DIFFUSE LENS, AND 0-10 V DIMMABLE DRIVER - 646 mm IN LENGTH	LED LINEAR - XOO LIGHT HYDRA SERIES	SHELTER - TYPE 1	25 VA	120 V	LED	2000 lm	4000 K	85+		3
A2	LINEAR LED LUMINAIRE WITH MINIMUM IP68 INGRESS PROTECTION, DIFFUSE LENS, AND 0-10 V DIMMABLE DRIVER - 582.5 mm IN LENGTH	LED LINEAR - XOO LIGHT HYDRA SERIES	SHELTER - TYPE 2	38 VA	120 V	LED	3000 lm	4000 K	85+		18
A4	LINEAR LED LUMINAIRE WITH MINIMUM IP68 INGRESS PROTECTION, DIFFUSE LENS, AND 0-10 V DIMMABLE DRIVER - 582.5 mm IN LENGTH	LED LINEAR - XOO LIGHT HYDRA SERIES	SHELTER - TYPE 4	13 VA	120 V	LED	1000 lm	4000 K	85+		4
A5	LINEAR LED LUMINAIRE WITH MINIMUM IP68 INGRESS PROTECTION, DIFFUSE LENS, AND 0-10 V DIMMABLE DRIVER - 582.5 mm IN LENGTH	LED LINEAR - XOO LIGHT HYDRA SERIES	SHELTER - TYPE 5	13 VA	120 V	LED	1000 lm	4000 K	85+		4
A6	LINEAR LED LUMINAIRE WITH MINIMUM IP68 INGRESS PROTECTION, DIFFUSE LENS, AND 0-10 V DIMMABLE DRIVER - 582.5 mm IN LENGTH	LED LINEAR - XOO LIGHT HYDRA SERIES	SHELTER - TYPE 6	32 VA	120 V	LED	2000 lm	4000 K	85+		6

METRIC
ALL DIMENSIONS SHOWN
IN METERS UNLESS NOTED
OTHERWISE.

REFERENCE DRAWINGS

ISSUED

REVISIONS

DRAWN BY:
BGM

DESIGNED BY:
INTEGRAL GROUP

CHECKED BY:
CUB

APPROVED BY:
BG

SCALE:
1 : 1

FULL SIZE ONLY

END



GO - Metrolinx Shelters

ELECTRICAL SYMBOLS LEGEND

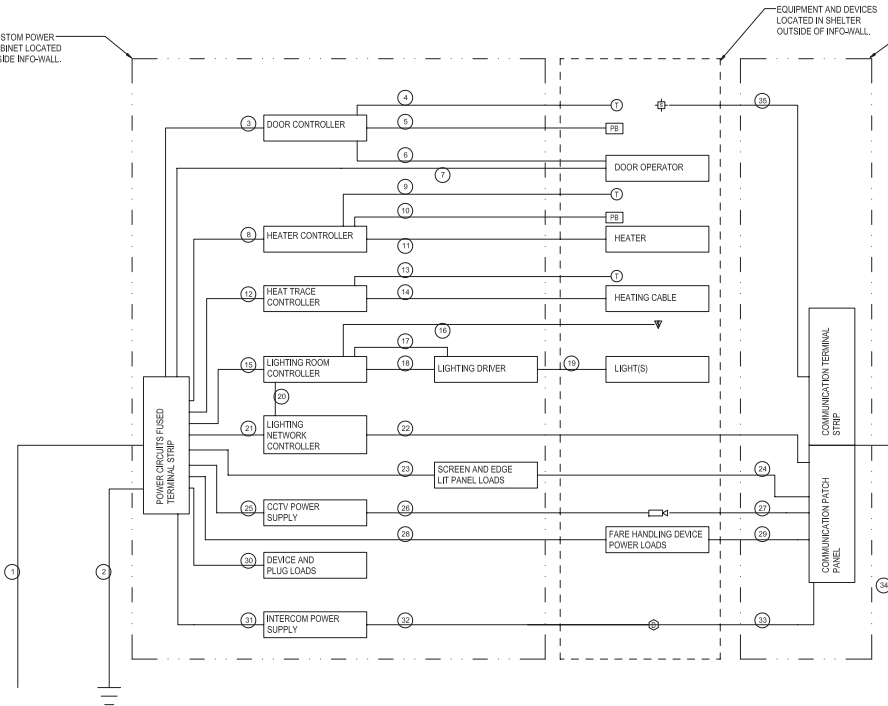
METROLINX PROJECT NO. XXXXXX

CONTRACT NO: R00-2014- CON-06.1	DRAWING NO: E0.1	REV. 0.	SHEET
---------------------------------------	---------------------	------------	-------

CUSTOM POWER CABINET LOCATED INSIDE INFO-WALL.

EQUIPMENT AND DEVICES LOCATED IN SHELTER OUTSIDE OF INFO-WALL.

CUSTOM COMMUNICATION CABINET LOCATED INSIDE INFO-WALL.




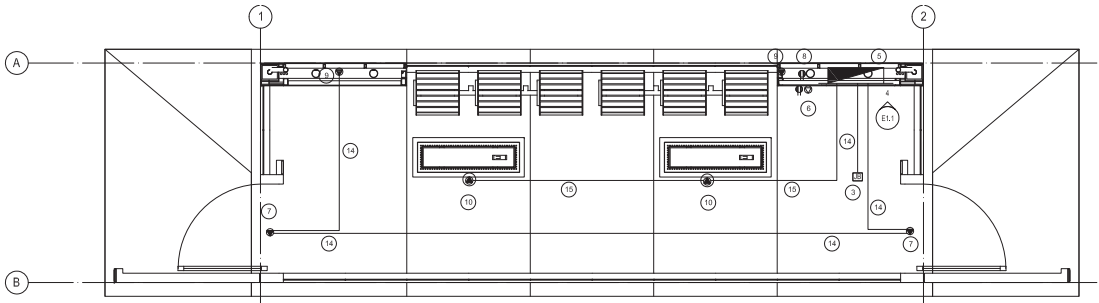
- 1 INCOMING POWER CIRCUITS. PROVIDE 1 27mm CONDUIT OF SUFFICIENT LENGTH TO RUN FROM CUSTOM BUILT ELECTRICAL CABINET TO 1m PAST THE EDGE OF THE SHELTER. CONDUIT INSTALLATION AND PROVISION OF WIRING BY OTHERS AT TIME OF INSTALLATION ON SITE.
- 2 ELECTRICAL SYSTEM GROUNDING. PROVIDE 1 27mm CONDUIT OF SUFFICIENT LENGTH TO RUN FROM CUSTOM BUILT ELECTRICAL CABINET TO 1m PAST THE EDGE OF THE SHELTER. PROVIDE A GROUNDING BAR INSIDE ELECTRICAL CABINET FOR FUTURE CONNECTION TO GROUNDING SYSTEM. GROUND ROD, GROUND WIRE AND CONDUIT INSTALLATION WILL BE BY OTHERS AT TIME OF INSTALLATION ON SITE.
- 3 15A 120V CIRCUIT FOR DOOR CONTROLLER. SHARE CIRCUIT WITH CCTV POWER SUPPLY AND INTERCOM POWER SUPPLY. PROVIDE A 15A FUSE IN TERMINAL STRIP. AND #12AWG CONDUCTORS FROM STRIP TO CONTROLLER.
- 4 LOW VOLTAGE CONTROL WIRING FROM LOW-VOLTAGE THERMOSTAT TO DOOR CONTROLLER. PROVIDE #14AWG CONDUCTORS FROM THERMOSTAT TO DOOR CONTROLLER.
- 5 LOW VOLTAGE CONTROL WIRING FROM PUSH BUTTON TO DOOR CONTROLLER. PROVIDE #14 AWG CONDUCTORS FROM THERMOSTAT TO DOOR CONTROLLER.
- 6 LOW VOLTAGE CONTROL WIRING FROM DOOR CONTROLLER TO DOOR OPERATOR. PROVIDE #14 AWG CONDUCTORS FROM CONTROLLER TO DOOR OPERATOR.
- 7 15A 120V CIRCUIT TO DOOR OPERATOR(S). PROVIDE A 15 A FUSE IN TERMINAL STRIP. AND #12AWG CONDUCTORS FROM TERMINAL STRIP TO OPERATOR. SHARE ONE CIRCUIT FOR ALL DOOR OPERATORS.
- 8 20A 208V CIRCUIT FOR INFRARED HEATER. PROVIDE A 20 A FUSE IN TERMINAL STRIP AND #12AWG CONDUCTORS FROM TERMINAL STRIP TO CONTROLLER. PROVIDE A DEDICATED CIRCUIT AND CONTROLLER FOR EACH HEATER.
- 9 LOW VOLTAGE CONTROL WIRING FROM THERMOSTAT TO HEATER CONTROLLER. PROVIDE #14AWG CONDUCTORS FROM THERMOSTAT TO ALL CONTROLLERS.
- 10 LOW VOLTAGE CONTROL WIRING FROM PUSH BUTTON TO HEATER CONTROLLER. PROVIDE #14AWG CONDUCTORS FROM PUSH BUTTON TO ALL CONTROLLERS.
- 11 208V POWER WIRING FROM CONTROLLER TO INFRARED HEATER. PROVIDE #10AWG CONDUCTORS FROM CONTROLLER TO HEATER.
- 12 20A 208V CIRCUIT FOR ELECTRIC HEAT TRACE. PROVIDE 20 A FUSE IN TERMINAL STRIP. AND #12AWG CONDUCTORS FROM TERMINAL STRIP TO CONTROLLER.
- 13 LOW VOLTAGE SENSOR WIRE. INSTALL HEAT TRACE TEMPERATURE SENSOR ON SHELTER ROOF. PROVIDE #14AWG CONDUCTORS FROM SENSOR TO CONTROLLER.
- 14 208V POWER WIRING FROM CONTROLLER TO HEATING CABLE CONNECTION. MOUNT WEATHERPROOF JUNCTION BOX ON SHELTER ROOF FOR CONNECTION TO HEATING CABLE. PROVIDE #10AWG CONDUCTORS FROM CONTROLLER TO JUNCTION.
- 15 15A 120V CIRCUIT FOR LIGHT FIXTURES. PROVIDE 15 A FUSE IN TERMINAL STRIP. AND #12AWG CONDUCTORS FROM TERMINAL STRIP TO ROOM CONTROLLER. PROVIDE A DEDICATED CIRCUIT TO THE ROOM CONTROLLER FOR EACH DRIVER SUPPLIED WITH THE SHELTER.
- 16 LOW VOLTAGE LIGHTING CONTROL WIRING. PROVIDE #14AWG CONDUCTORS FROM LIGHTING CONTROL DEVICES TO ROOM CONTROLLER.
- 17 0-10V DIMMING SIGNAL FROM ROOM CONTROLLER TO DRIVER(S). PROVIDE WIRING AS PER MANUFACTURER'S RECOMMENDATIONS.
- 18 15A 120V CIRCUIT FROM ROOM CONTROLLER TO DRIVER(S). PROVIDE #12AWG CONDUCTORS FROM CONTROLLER TO EACH DRIVER.
- 19 LOW VOLTAGE POWER WIRING FROM DRIVER(S) TO LIGHT FIXTURES. PROVIDE #12AWG CONDUCTORS FROM DRIVER(S) TO LIGHT FIXTURES.
- 20 LOW VOLTAGE LIGHTING CONTROL WIRING. PROVIDE WIRING AS PER MANUFACTURER'S RECOMMENDATIONS.
- 21 15A 120V CIRCUIT FOR NETWORK LIGHTING CONTROLLER. PROVIDE 15A FUSE IN TERMINAL STRIP AND #12AWG CONDUCTORS FROM TERMINAL STRIP TO CONTROLLER.
- 22 CAT5 DATA CABLE FROM NETWORK LIGHTING CONTROLLER TO PATCH PANEL IN CUSTOM ELECTRICAL ENCLOSURE.
- 23 15A 120V CIRCUIT(S) FOR EDGE LIT LED PANELS AND LCD SCREENS. PROVIDE ONE CIRCUIT FOR EVERY THREE SCREENS. FOR EACH CIRCUIT PROVIDE 15A FUSE IN TERMINAL STRIP AND #12AWG CONDUCTORS FROM TERMINAL STRIP TO DEVICE.
- 24 CAT5 DATA CABLE FROM EACH LCD SCREEN TO PATCH PANEL IN CUSTOM ELECTRICAL ENCLOSURE.
- 25 15A 120V CIRCUIT FOR CCTV POWER SUPPLY. SHARE A CIRCUIT WITH INTERCOM POWER SUPPLY AND DOOR CONTROLLER. PROVIDE 15A FUSE IN TERMINAL STRIP AND #12AWG CONDUCTORS FROM TERMINAL STRIP TO POWER SUPPLY.
- 26 LOW VOLTAGE POWER WIRING. PROVIDE #14AWG WIRING FROM CCTV POWER SUPPLY TO EACH CCTV CAMERA.
- 27 CAT5 CABLE FROM EACH CCTV CAMERA TO PATCH PANEL IN CUSTOM ENCLOSURE.
- 28 15A 120V CIRCUIT FOR FARE HANDLING DEVICES. PROVIDE ONE CIRCUIT FOR ALL HANDLING DEVICES. PROVIDE 15A FUSE IN TERMINAL STRIP. AND #12 AWG CONDUCTORS FROM TERMINAL STRIP TO HANDLING DEVICE.
- 29 CAT5 CABLE FROM EACH FARE HANDLING DEVICE TO PATCH PANEL IN CUSTOM ENCLOSURE.
- 30 15A 120V CIRCUIT FOR INFO-WALL MOUNTED DEVICES AND PLUGS. PROVIDE 1 CIRCUIT FOR ALL DEVICES. PROVIDE 15A FUSE IN TERMINAL STRIP. AND #12 AWG CONDUCTORS FROM TERMINAL STRIP TO DEVICES.
- 31 15A 120V CIRCUIT FOR INTERCOM POWER SUPPLY. SHARE A CIRCUIT WITH DOOR CONTROLLER AND CCTV POWER SUPPLY. PROVIDE 15A FUSE IN TERMINAL STRIP. AND #12AWG CONDUCTORS FROM TERMINAL STRIP TO POWER SUPPLY.
- 32 LOW VOLTAGE POWER WIRING FROM INTERCOM POWER SUPPLY TO INTERCOM STATION. PROVIDE #14AWG CONDUCTORS FROM POWER SUPPLY TO INTERCOM STATION.
- 33 CAT5 CABLE FROM INTERCOM STATION TO PATCH PANEL IN CUSTOM ENCLOSURE.
- 34 INCOMING DATA AND SPEAKER CABLING. PROVIDE A 35mm CONDUIT OF SUFFICIENT LENGTH TO RUN FROM CUSTOM BUILT ELECTRICAL CABINET TO 1m PAST THE EDGE OF THE SHELTER. CONDUIT INSTALLATION AND PROVISION OF WIRING BY OTHERS AT TIME OF INSTALLATION ON SITE.
- 35 SPEAKER CABLING. PROVIDE #14AWG CONDUCTOR FROM LOW VOLTAGE TERMINAL STRIP TO SPEAKER.

1 ELECTRICAL INTERCONNECTION DIAGRAM
R.T.S.

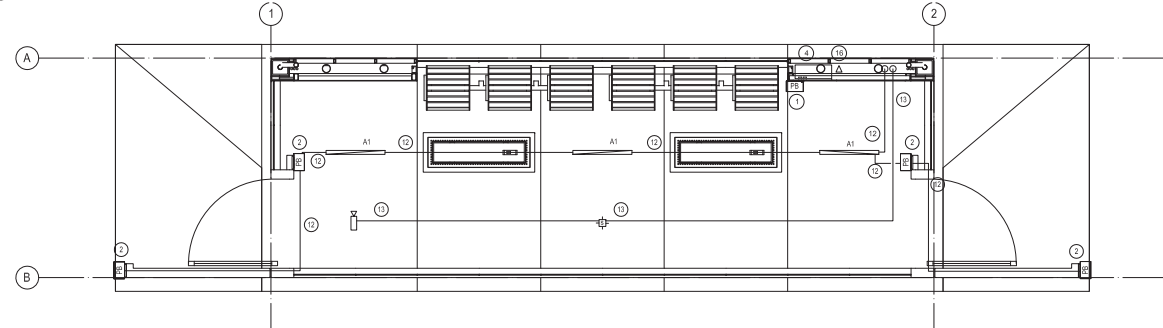
METRIC
ALL DIMENSIONS SHOWN
ARE IN METERS UNLESS
OTHERWISE NOTED

METROLINX PROJECT NO. XXXXXX

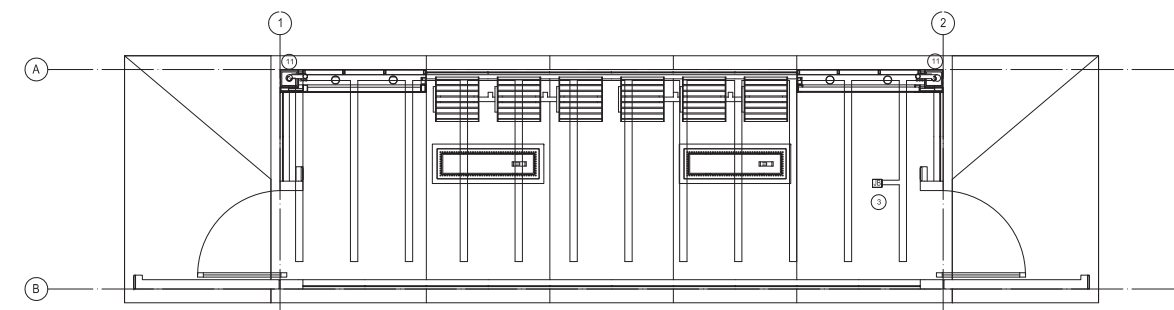
REFERENCE DRAWINGS		ISSUED		REVISIONS		DRAWN BY:	DESIGNED BY:			GO - Metrolinx Shelters			
No.	DATE	No.	DATE	No.	DATE	C/S	C/S			ELECTRICAL INTERCONNECTION DIAGRAM			
1	2016/07/26	1	2016/07/26							CONTRACT NO: R00-2014-061		DRAWING NO: E0.2	REV: 0
2	2016/07/26	2	2016/07/26			CvB	CvB			SHEET			
3	2016/07/26	3	2016/07/26			2016/07/26	2016/07/26	SCALE: 1 : 1		FULL SIZE ONLY			



1 SHELTER TYPE 1 - ELECTRICAL LINE VOLTAGE PLAN
1:25



2 SHELTER TYPE 1 - ELECTRICAL LOW VOLTAGE PLAN
1:25



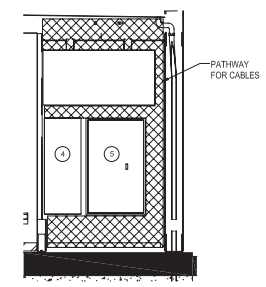
3 SHELTER TYPE 1 - ELECTRICAL LINE VOLTAGE PLAN
1:25

DRAWING NOTES:

1. INSTALL HEAT TRACE PARALLEL ALONG CORRUGATION LINES, AND ACCORDING TO MANUFACTURER'S INSTRUCTIONS.
2. ALL CONDUCTORS INSIDE SHELTER MUST BE PROTECTED BY ARMoured CABLING CONSOLIDATION MUST TAKE PLACE IN CEILING MOUNTED DEVICE BOX. NO ACCESS PANELS FOR ADDITIONAL JUNCTION BOXES ARE ALLOWED.
3. LIGHTING CONTROL SIGNALS WILL COME FROM MAIN STATION CONTROL SYSTEM. COORDINATE NETWORK LIGHTING CONTROL MANAGER COMMUNICATION PROTOCOL WITH STATION CONTROL SYSTEM PROTOCOL PRIOR TO INSTALLATION.
4. HEATER TO BE CONTROLLED BY CENTRAL STATION THERMOSTAT. STATION THERMOSTAT TO PROVIDE AUXILIARY LOW VOLTAGE INPUT TO HEATER CONTROLLER. COORDINATE LOW VOLTAGE WIRING REQUIREMENT WITH STATION THERMOSTAT.

DRAWING KEYNOTES:

- 1 PUSH BUTTON FOR HEATER CONTROL INPUT.
- 2 PUSH BUTTON FOR DOOR OPERATORS.
- 3 EXTERIOR ROOF MOUNTED WEATHER PROOF JUNCTION BOX FOR HEAT TRACE SYSTEM.
- 4 PROVIDE CUSTOM COMMUNICATION CABINET WITH DIMENSIONS OF 400mm WIDE X 1050mm HIGH X 125mm DEEP. COORDINATE MOUNTING WITH ARCHITECTURAL DETAILS.
- 5 PROVIDE CUSTOM POWER CABINET WITH DIMENSIONS OF 610mm WIDE X 1050mm HIGH X 125mm DEEP. COORDINATE MOUNTING WITH ARCHITECTURAL DETAILS.
- 6 USB CHARGING STATION.
- 7 DOOR OPERATOR.
- 8 POWER FOR LCD SCREEN. COORDINATE MOUNTING HEIGHT WITH ARCHITECTURAL DRAWINGS.
- 9 POWER FOR OPTIONAL LED BACKLIT PANEL.
- 10 INFRARED HEATERS.
- 11 PROVIDE HEAT TRACE DOWN RAIN WATER LEADER TO GRADE.
- 12 CONSOLIDATE ALL LOW VOLTAGE WIRING INTO ONE OF TWO MULTI-CONDUCTOR ARMoured CABLES FOR ALL #14AWG CONDUCTORS.
- 13 CONSOLIDATE ALL CAT5 CABLES INTO ONE OF TWO MULTI-CONDUCTOR ARMoured CABLES.
- 14 CONSOLIDATE ALL LINE VOLTAGE WIRING INTO ONE OF TWO MULTI-CONDUCTOR ARMoured CABLES FOR ALL #12AWG CONDUCTORS.
- 15 CONSOLIDATE ALL #10AWG CABLES INTO ONE OF THREE MULTI-CONDUCTOR ARMoured CABLES.
- 16 DATA FOR LCD SCREEN. COORDINATE MOUNTING HEIGHT WITH ARCHITECTURAL DRAWINGS.



4 Shelter Type 1 Elevation Info Wall
1:25

NOTE:
THIS DRAWING IS PROVIDED FOR INSTRUCTIONAL DESIGN PURPOSES ONLY BASED ON METROLINX GO TRANSIT DESIGN GUIDELINES AND REQUIREMENTS. THE CONSULTANT SHALL VERIFY FOR LOCAL CODE COMPLIANCE, SITE SPECIFIC CONDITIONS AND INTER-DISCIPLINARY DRAWING COORDINATION. ALL DIMENSIONS AND SPECIFICATIONS SHOULD BE VERIFIED BY CONSULTANT AND/OR CONTRACTOR BEFORE ACTUAL CONSTRUCTION BEGINS.

METROLINX PROJECT NO. XXXXXX

METRIC
ALL DIMENSIONS SHOWN
ARE IN METERS UNLESS
OTHERWISE NOTED

REFERENCE DRAWINGS			ISSUED			REVISIONS		
No.	DATE	DESCRIPTION	No.	DATE	DESCRIPTION	No.	DATE	DESCRIPTION
1	2016/07/26	ISSUE FOR CONSTRUCTION						
2	2016/07/26	ISSUE FOR CONSTRUCTION						
3	2016/07/26	ISSUE FOR CONSTRUCTION						
4	2016/07/26	ISSUE FOR CONSTRUCTION						
5	2016/07/26	ISSUE FOR CONSTRUCTION						
6	2016/07/26	ISSUE FOR CONSTRUCTION						

DRAWN BY: _____ DESIGNED BY: _____
 CHECKED BY: _____ APPROVED BY: _____
 2016/07/26 2016/07/26
 SCALE: FULL SIZE ONLY
 As indicated



GO - Metrolinx Shelters

SHELTER TYPE 1 - RAIL LINE STATIONS PASSENGER SHELTER - POWER AND LIGHTING PLANS

CONTRACT NO: R00-2014-CON-061 DRAWING NO: E1.1 REV: 0 SHEET

METRIC

ALL DIMENSIONS SHOWN ARE IN METERS AND/OR MILLIMETERS UNLESS OTHERWISE NOTED

DRAWING LEGEND AND ABBREVIATIONS

UNLESS OTHERWISE NOTED, DESIGN LOADS SHOWN ARE SPECIFIED UNFACTORED LOADS. TO BE USED FOR ALL DESIGN, FOR POINT LOADS, IF ONLY ONE LOAD IS GIVEN, CONSIDER THE LOAD FOR WIND AND SNOW LOADS TO BE USED FOR SLS DESIGN. REFER TO MATERIAL AND DESIGN DATA NOTES.

Table with 4 columns: Abbreviation, Description, Abbreviation, Description. Includes terms like AB (ANCHOR BOLT), LE (LEFT END), SCA (STEP DOWN FOOTING), etc.

STRUCTURAL DRAWING LIST

Table with 2 columns: Code and Description. Lists drawing codes S0.1 through S6.1 and their corresponding shelter types.

STRUCTURAL WORK

- 1. GENERAL
1.1. PROVIDE ALL MATERIAL AND LABOUR REQUIRED FOR THE COMPLETION OF THE WORK...
1.2. COORDINATE ALL WORK SHOWN ON THE STRUCTURAL DRAWINGS WITH ARCHITECTURAL, MECHANICAL, ELECTRICAL...
1.3. MAKE GOOD ALL EXISTING WORK DISTURBED BY THE SHORING OPERATIONS...
1.4. DO NOT SCALE THESE DRAWINGS.
1.5. SEE ARCHITECTURAL DRAWINGS FOR PREPROOFING REQUIREMENTS.
2. CODES AND STANDARDS
2.1. COMPLY WITH THE REQUIREMENTS OF THE 2012 ONTARIO BUILDING CODE IN FORCE AND THE OCCUPATIONAL HEALTH AND SAFETY ACT AND REGULATIONS FOR CONSTRUCTION PROJECTS.

METROLINX PROJECT NO. XXXXXX

GO SHELTER DESIGNS
GENERAL NOTES AND
DRAWING LIST

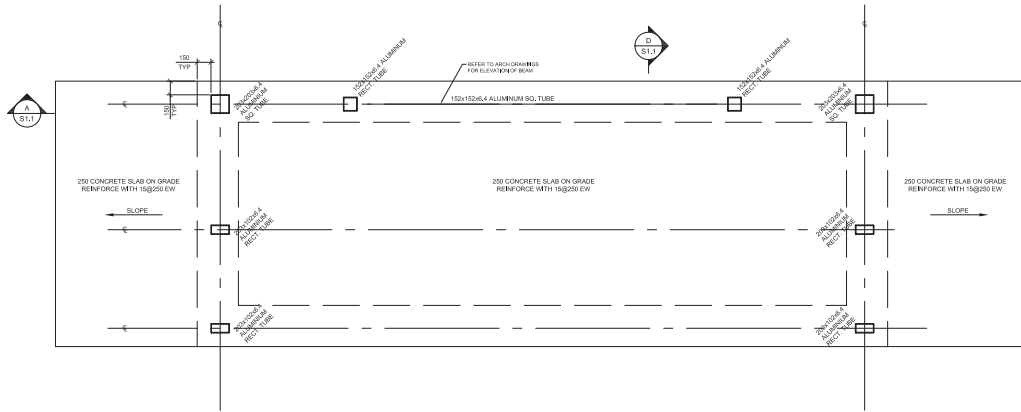


Table with 4 columns: REFERENCE DRAWINGS, ISSUE, REVISIONS, and a section for DRAWN BY, DESIGNED BY, CHECKED BY, APPROVED BY, and SCALE.

Table with 4 columns: CONTRACT NO. (RQD-2014-COIN-061), DRAWING NO. (S0.1), REV. (0), SHEET (1)

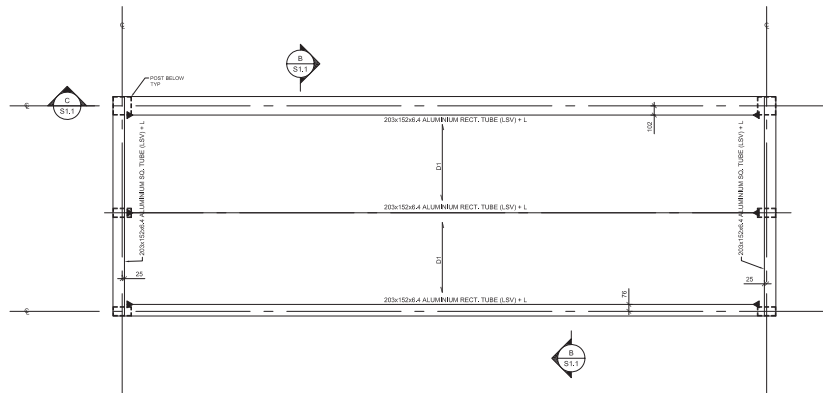
METRIC

ALL DIMENSIONS SHOWN ARE IN METERS AND/OR MILLIMETERS UNLESS OTHERWISE NOTED



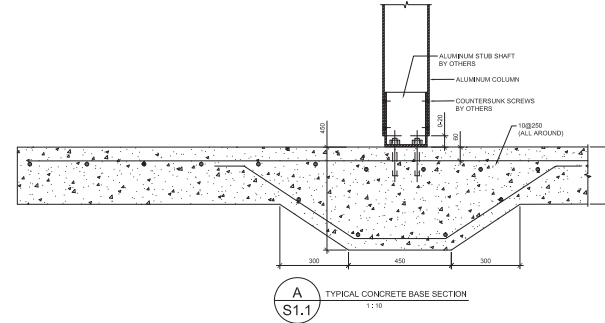
RAIL LINE STATIONS PASSENGER SHELTER FOUNDATION PLAN

1. FOR THE STRUCTURAL GENERAL NOTES, REFER TO SPECIFICATION SECTION.
2. GROUT BASE PLATES AND BEARING PLATES PRIOR TO PLACING LOADS ON STRUCTURE.
3. REFER TO ARCHITECTURAL DRAWINGS FOR DIMENSIONS AND GRIDLINES.
4. REFER TO ARCH DWGS FOR SLOPE.

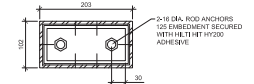


RAIL LINE STATIONS PASSENGER SHELTER ROOF FRAMING PLAN

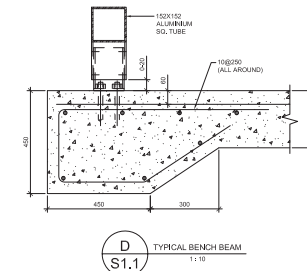
1. FOR THE STRUCTURAL GENERAL NOTES, REFER TO SPECIFICATION SECTION.
2. FOR ROOF DATUM ELEVATION AND DIMENSIONS REFER TO ARCHITECTURAL DRAWINGS.
3. UNLESS NOTED OTHERWISE ON PLAN, DESIGN LOADS ARE:
DECK LOAD (ENW) = 2.4 KN/M² MINIMUM.
4. 'D' ON PLAN DENOTES 38 DEEP GALVANIZED STEEL DECK (C/L, L, W, T) SECURED WITH SELF DRILLING TEK SCREWS 4 x 1-1/8" @ 300 ON.
5. ▶ = MOMENT CONNECTION (HYBRID, MILDSTEEL, CMT/BRN).
6. DESIGN THE COLUMN TO BEAM CONNECTION FOR A MINIMUM COMBINED FORCES OF HYBRID, MILDSTEEL, 10" MIN. CM/BRN.
7. THERE SHALL BE NO WELDED CONNECTION UNLESS ALLOWED AND CONFIRMED WITH THE STRUCTURAL CONSULTANT.



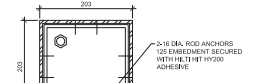
A S1.1 TYPICAL CONCRETE BASE SECTION 1:10



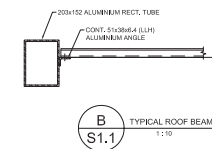
TYPICAL BASE PLATE CONNECTION DETAIL FOR 203x102 RECT. TUBE SCALE 1:1.5



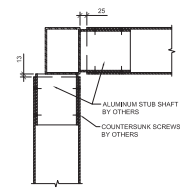
D S1.1 TYPICAL BENCH BEAM 1:10



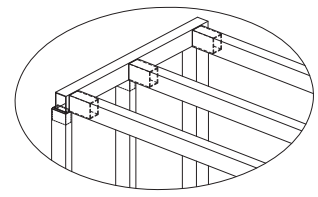
TYPICAL BASE PLATE CONNECTION DETAIL FOR 203x203 SQ. TUBE SCALE 1:1.5



B S1.1 TYPICAL ROOF BEAM 1:10



C S1.1 TYPICAL SECTION 1:10



ISOMETRIC VIEW OF BEAM-COLUMN CONNECTION NOT TO SCALE

NOTE: THIS DRAWING IS PROVIDED FOR INSTRUCTIONAL DESIGN PURPOSES ONLY BASED ON METROLINX GO TRANSIT DESIGN GUIDELINES AND REQUIREMENTS. THE CONSULTANT SHALL VERIFY FOR LOCAL CODE COMPLIANCE, SITE SPECIFIC CONDITIONS AND INTERDISCIPLINARY DRAWING COORDINATION. ALL DIMENSIONS AND SPECIFICATIONS SHOULD BE VERIFIED BY CONSULTANT AND/OR CONTRACTOR BEFORE ACTUAL CONSTRUCTION BEGINS.

METROLINX PROJECT NO. XXXXXX



GO SHELTER DESIGNS
SHELTER TYPE 1 - RAIL LINE STATIONS PASSENGER SHELTERS
PLANS AND DETAILS

REV.	NO.	DATE	ISSUED FOR	REV.	DATE

REFERENCE DRAWINGS	ISSUE	REVISIONS

DRAWN BY: DEB	DESIGNED BY: RYS
CHECKED BY: RYS 2016/07/26	APPROVED BY:
SCALE: 1 : 25	FULL SIZE ONLY

CONTRACT NO: RQD-2014- CON-06.1	DRAWING NO: S1.1	REV: 0.	SHEET
---------------------------------------	---------------------	------------	-------