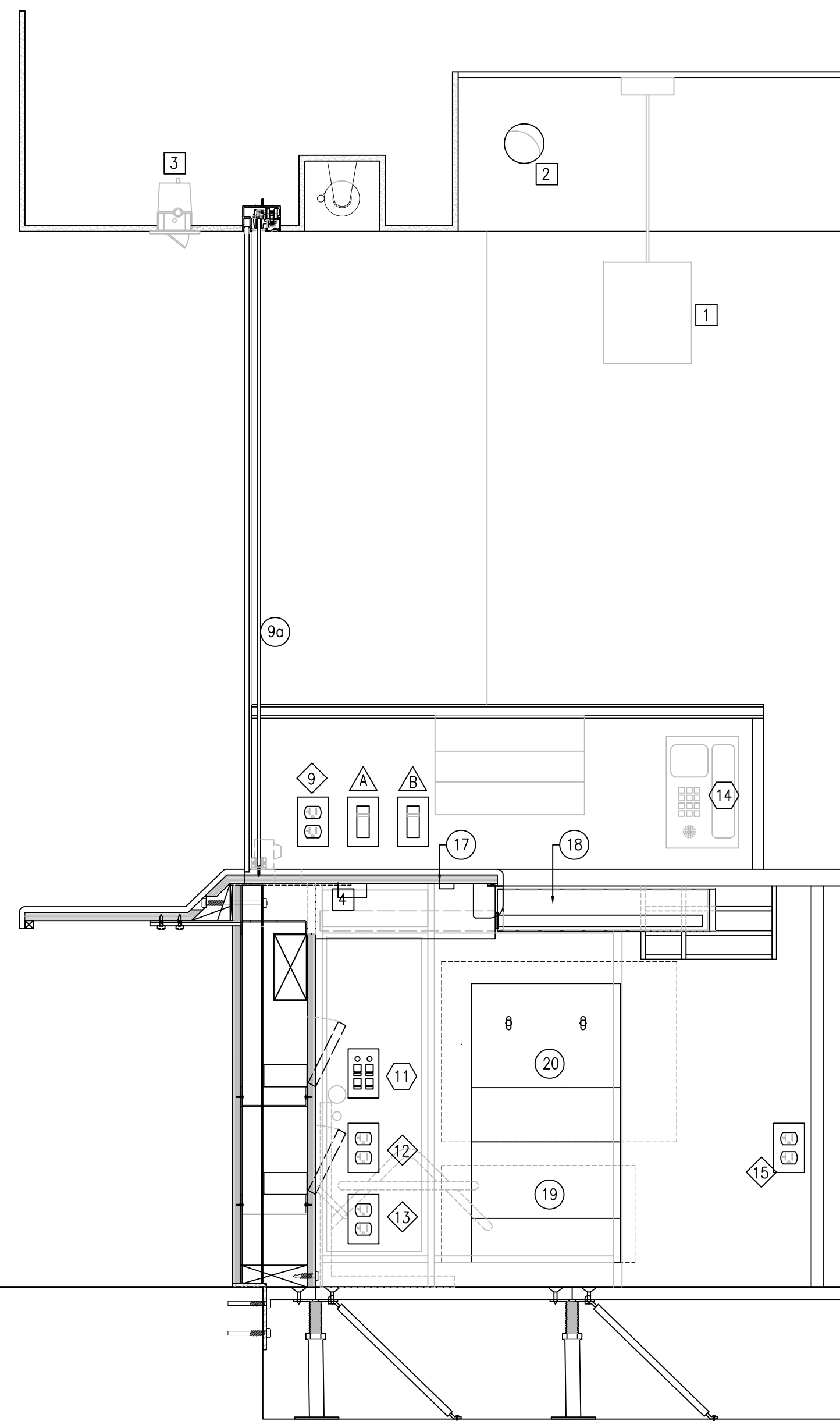


ALL DIMENSIONS SHOWN ARE IN METRES AND/OR MILLIMETRES UNLESS OTHERWISE NOTED.

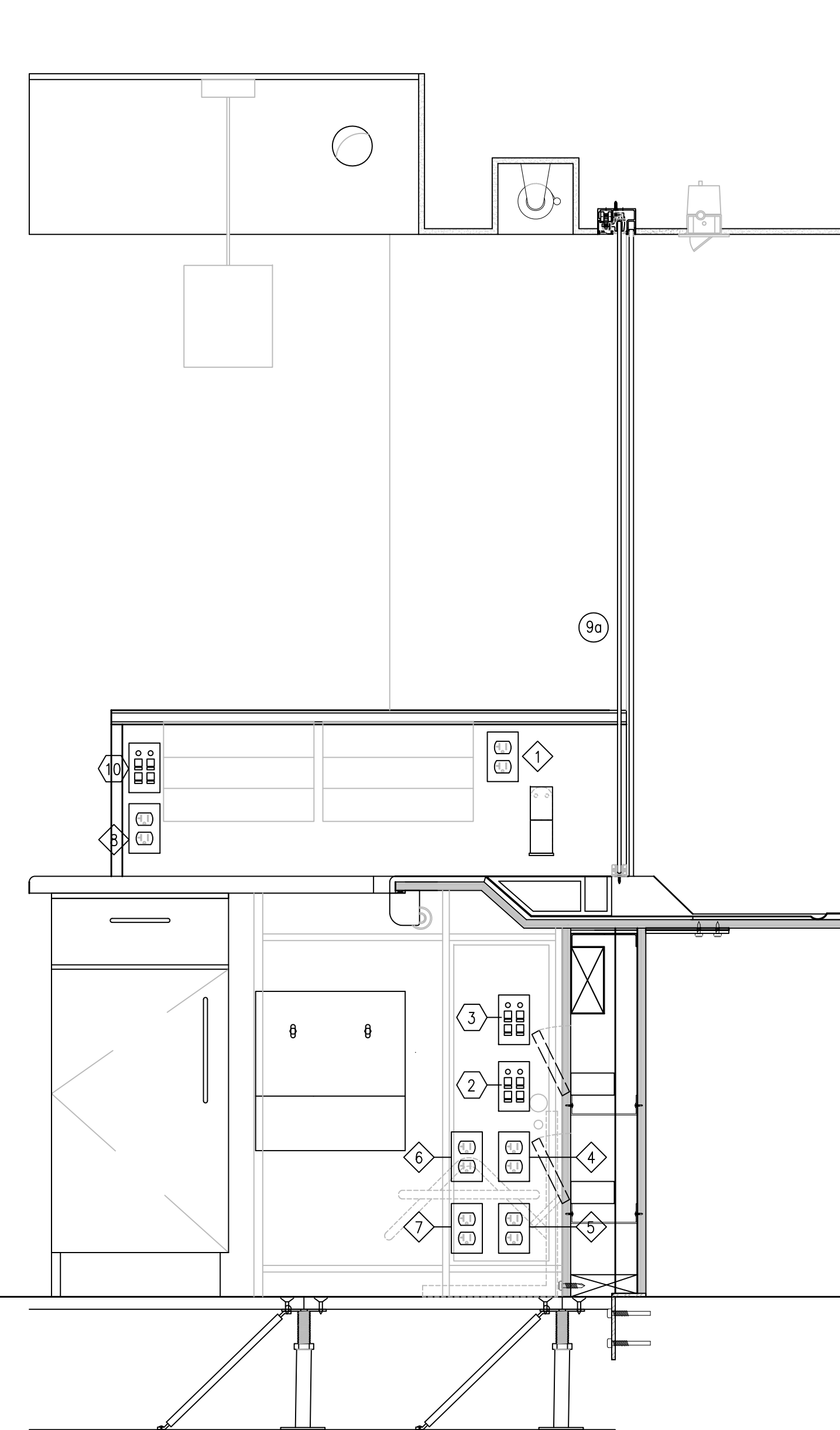
DISCLAIMER
THIS DRAWING IS PROVIDED FOR INSTRUCTIONAL DESIGN PURPOSES ONLY BASED ON METROLINK GO TRANSIT DESIGN GUIDELINES AND REQUIREMENTS. THE CONSULTANT SHALL VERIFY FOR LOCAL CODE COMPLIANCE, EXISTING SITE CONDITIONS AND INTER DISCIPLINARY DRAWING COORDINATION. ALL DIMENSIONS AND SPECIFICATIONS SHOULD BE VERIFIED BY CONSULTANT AND/OR CONTRACTOR BEFORE ACTUAL CONSTRUCTION BEGINS.



EQUIPMENT LIST					
NO.	DESCRIPTION	PWR	DTA	OTHR	
1	COUNTERFEIT DETECTOR	8			
2	PLUG IN CALCULATOR	8			
3	WIRELESS MOUSE	BATT.			
4	WIRELESS KEYBOARD	BATT.			
5	CORPORATE PC - (ALL-IN-ONE)	5	2		
5a	CORP. PC. MONITOR ARM (24" REACH)				
6	PIN PAD - MOVEABLE (ATTENDANT)	6	2		
7	PIN PAD - FIXED (CUSTOMER)	PQE	6	3	
8	RECEIPT PRINTER	UPS	CPU	20	
9	VOICELINK SYS. W/ INDUCTION LOOP (OPT)	4			
9a	THIN PROFILE SPIT GUARD				
10	PRESTO CARD READER	UPS	CPU	19	20
11	PRESTO BALANCE DISPLAY	UPS	CPU	19	20
12	PRESTO TOUCHSCREEN MONITOR	UPS	CPU	19	20
12a	PRESTO MONITOR ARM (MIN 24" REACH)				
13	PRESTO WIRED KEYBOARD		CPU	20	
14	PRESTO WIRED MOUSE		CPU	20	
15	PHONE		14		
16	RED PHONE		10		
17	HOLD UP BUTTON		3	2	
18	CBM-505 CASH INSERT IN CUSTOM HARDWOOD MILLWORK DRAWER		3		
19	PRESTO UPS - (BELOW COUNTER)	13			
20	PRESTO CPU - (BELOW COUNTER)	UPS	19	11	
SPARES					
	ELEC. SPARE	4			
	ELEC. SPARE	7			
	ELEC. SPARE	10			

RECEPTACLE LIST	
SYM.	DESCRIPTION
1	20A, 120V, DUPLEX RECEPTACLE, SST FACEPLATE (TYPICAL) ON UPS POWER/COMMS ROOM
2	4 PORT NETWORK DATA RECEPTACLE, SST FACEPLATE (TYPICAL) HOME RUN TO COMMS ROOM
3	4 PORT CHUBB SECURITY DATA RECEPTACLE, SST FACEPLATE (TYPICAL) HOME RUN TO COMMS ROOM
4	20A, 120V, DUPLEX RECEPTACLE, SST FACEPLATE (TYPICAL) ON UPS POWER/COMMS ROOM
5	20A, 120V, DUPLEX RECEPTACLE, SST FACEPLATE (TYPICAL) ON UPS POWER/COMMS ROOM
6	20A, 120V, DUPLEX RECEPTACLE, SST FACEPLATE (TYPICAL) ON UPS POWER/COMMS ROOM
7	20A, 120V, DUPLEX RECEPTACLE, SST FACEPLATE (TYPICAL) ON UPS POWER/COMMS ROOM
8	20A, 120V, DUPLEX RECEPTACLE, SST FACEPLATE (TYPICAL) ON UPS POWER/COMMS ROOM
9	20A, 120V, DUPLEX RECEPTACLE, SST FACEPLATE (TYPICAL) ON UPS POWER/COMMS ROOM - SHALLOW BOX
10	2 PORT VOICE (1 RED PHONE) 2 PORT NET. DATA RECEPTACLE, SST F.PLATE (TYP) H.RUN TO COMMS ROOM
11	4 PORT NETWORK DATA RECEPTACLE, SST FACEPLATE (TYPICAL) HOME RUN TO COMMS ROOM
12	20A, 120V, DUPLEX RECEPTACLE, SST FACEPLATE (TYPICAL) ON UPS POWER/COMMS ROOM
13	15A, 120V, DUPLEX RECEPTACLE, SST FACEPLATE (TYPICAL) REGULAR POWER PANEL
14	SINGLE VOICE/DATA RECEPTACLE FOR WALL MOUNTED PHONE - SHALLOW BOX
15	20A, 120V, DUPLEX RECEPTACLE, SST FACEPLATE (TYPICAL) ON NORMAL POWER

LIGHTING LIST				
SYM.	NAME	REQUIREMENTS	SWITCH	DESCRIPTION
1	PENDANT LIGHT	120V, LED	A	ON/OFF SWITCH FOR OVERHEAD PENDANT LIGHT - SHALLOW BOX
2	EYEBALL TASK LIGHT	120V, LED, 4000K, >75 C.R.I., DIMMABLE TO 5%	B	DIMMER SWITCH FOR EYEBALL LIGHTS - SHALLOW BOX
3	POT LIGHT (CUSTOMER SIDE)	120V, LED		ALL CUSTOMER SIDE POT LIGHTS CONTROLLED BY SINGLE DIMMER, IN SERVICE COUNTER AREA
4	PUCK LIGHT (SERVICE ONLY)	120V, LED, BUILT IN ON/OFF SWITCH		INTEGRATED INTO FIXTURE



1 SECTION - RIGHT HAND SIDE
SCALE: 1:10

2 SECTION - LEFT HAND SIDE
SCALE: 1:10

REFERENCE DRAWINGS	ISSUE	REVISIONS	DRAWN BY:	DESIGNED BY:	METROLINK PROJECT NO.							
			A.O/C.G/S.C/J.W 13/02/04	13/02/04	<div style="display: flex; justify-content: space-between; align-items: center;"> <div style="text-align: center;"> <p>GO TRANSIT SERVICE COUNTER</p> <p>SECTION TYPICAL - RECEPTACLE LOCATIONS & NOTES</p> </div> </div>							
			CHECKED BY: P.J 13/02/04	APPROVED BY: GO 14/03/05					CONTRACT NO.	DWG. NO. SC-03b	REV. 2	SHEET
			SCALE: N.T.S. FULL SIZE ONLY									
DWG. NO.	TITLE	NO. DATE ISSUED FOR	REV. DATE	2 JULY 2015 LESSONS LEARNED REVISIONS								
				1 JUNE 2014 REVISED NOTATIONS								