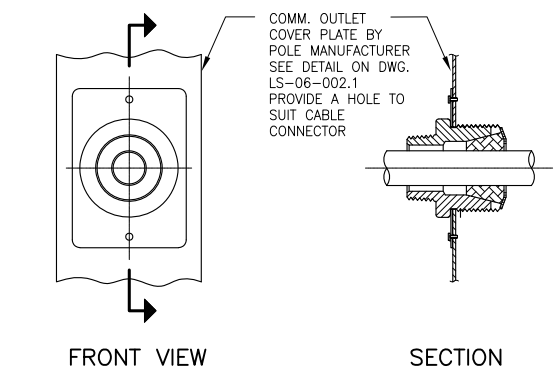


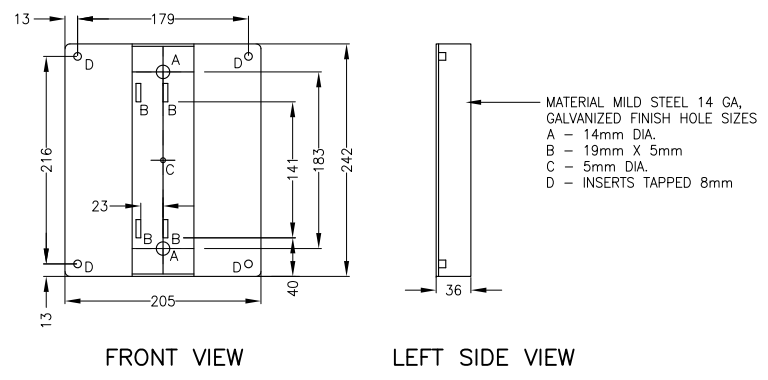
ELEVATION
TYPICAL PLATFORM LIGHTING POLE ASSEMBLY
 A
 LS-06-001.1

NOTE:
 THIS DRAWING IS PROVIDED FOR INSTRUCTIONAL DESIGN PURPOSES ONLY BASED ON METROLINX GO TRANSIT DESIGN GUIDELINES AND REQUIREMENTS. THE CONSULTANT SHALL VERIFY FOR LOCAL CODE COMPLIANCE, EXISTING SITE CONDITIONS AND INTER DISCIPLINARY DRAWING COORDINATION. ALL DIMENSIONS AND SPECIFICATIONS SHOULD BE VERIFIED BY CONSULTANT AND/OR CONTRACTOR BEFORE ACTUAL CONSTRUCTION BEGINS.

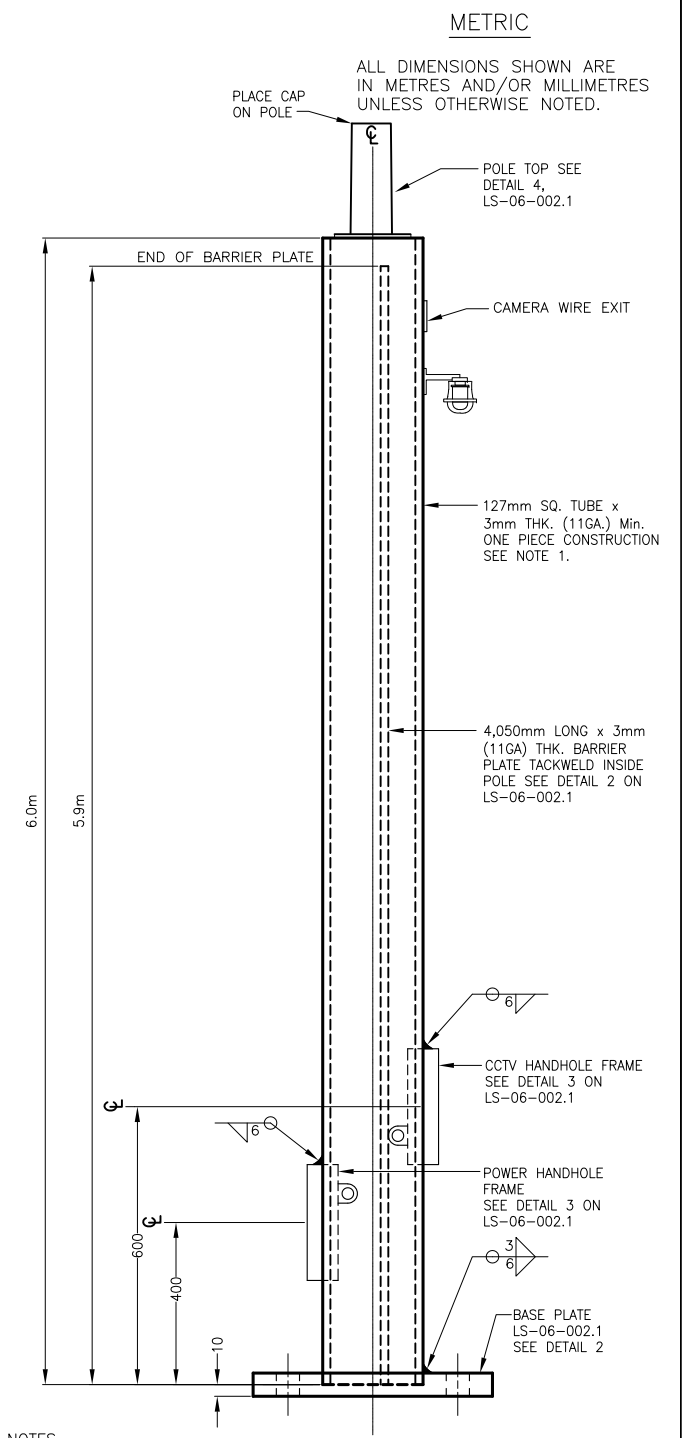
- NOTES:**
1. THIS TYPICAL 6m STRAIGHT SQUARE GALVANIZED STEEL POLE ASSEMBLY IS GENERAL GUIDANCE FOR ELECTRICAL INSTALLATION APPLICABLE TO PLATFORM, BUS LOADING, PUDDO AND WALKWAY AREA CCTV. FOR CONCRETE FOUNDATION REQUIREMENT, REFER TO LAYOUT DRAWINGS AND CONCRETE FOUNDATION REINFORCEMENT TABLE ON STANDARD DRAWING LS-06-003.1.
 2. FOR APPLICABLE CCTV MOUNTING HEIGHTS SEE NOTE 1 ABOVE.
 3. THE HORIZONTAL AND VERTICAL TRACK CLEARANCES FOR ALL PLATFORM CCTV POLE INSTALLATIONS SHALL COMPLY WITH THE LATEST CANADIAN NATIONAL AND CANADIAN PACIFIC RAILWAYS STANDARD CLEARANCE DIAGRAM. THE DESIGNER TO DETERMINE EXACT DISTANCE AND MUST OBTAIN WRITTEN APPROVALS BEFORE ANY WORK IS STARTED.
 4. INTENTIONALLY LEFT BLANK.
 5. INTENTIONALLY LEFT BLANK.
 6. COMMUNICATION HARDWARE AND WIRING SUPPLIED AND INSTALLED AS SPECIFIED. FOR EXACT LOCATION OF CAMERA, REFER TO LAYOUT DRAWINGS.
 7. GROUNDING RODS TO BE LOCATED AT BASE OF EVERY OTHER POLE OR EVERY 50M (PLATFORM ONLY.)
 8. ORIENTATE POLE SUCH THAT HANDHOLES POINT DOWN THE LENGTH OF THE PLATFORM.
 9. CCTV POLE CONSTRUCTION AND COMPONENTS SHALL BE HOT DIP GALVANIZED STEEL C.S.A. G40.21-44 W MINIMUM WITH 50ksi YIELD.
 10. SEE ELECTRICAL SPECIFICATIONS FOR ALL WELDING, WIND SPEED AND EPA STANDARDS.
 11. ALL FASTENERS TO BE STAINLESS STEEL EXCEPT WHERE NOTED OTHERWISE.
 12. POLE MANUFACTURER SHALL SUPPLY BOLTS, NUTS AND WASHERS TO SUIT DESIGN SPECIFIED.
 13. NUTS AND BOLTS TO BE STAINLESS STEEL.
 14. CCTV CAMERA SHALL HAVE DRIP LOOPS.



DETAIL 7
COMM. WIRING OUTLET
 LS-06-001.1




DETAIL 8
P.A./CAMERA MOUNTING BRACKET
 LS-06-001.1



- NOTES:**
1. ALL WELDING TO CONFORM TO THE SPECIFICATIONS OF THE C.W.B. W47.1 AND W59 FULLY APPROVED C.S.A. QUALITY PROGRAM STANDARD CAN3-2299.3-1979. DESIGNED TO AASHTO WITH 80MPH WIND SPEED & 1.3 GUST FACTOR, DESIGNED FOR MAXIMUM EPA OF 10.
 2. ALL FASTENERS TO BE STAINLESS STEEL EXCEPT WHERE NOTED OTHERWISE.
 3. POLE MANUFACTURER SHALL SUPPLY BOLTS, NUTS AND WASHERS TO TO SUIT DESIGN SPECIFIED IN NOTE 2 ABOVE.

DETAIL 1
POLE SHAFT
 LS-06-001.1, LS-06-002.1, LS-06-004.1

METROLINX PROJECT NO. XXXXXX

REFERENCE DRAWINGS		ISSUE		REVISIONS		DRAWN BY: X.X.X. YY/MM/DD	DESIGNED BY: YY/MM/DD	 A Division of METROLINX	FACILITY 6m CCTV POLE ELEVATION AND DETAILS		CONTRACT NO.	DWG. NO. LS-06-001.1	REV. 0	SHEET
						CHECKED BY: YY/MM/DD	APPROVED BY: YY/MM/DD							
						SCALE: N.T.S. FULL SIZE ONLY								
DWG. NO.	TITLE	No.	DATE	ISSUED FOR	REV.	DATE								