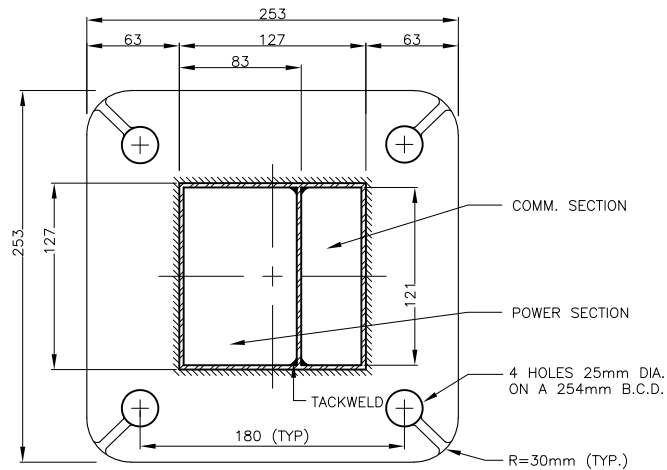
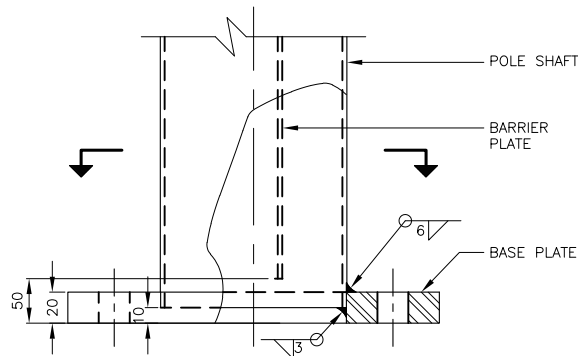


ALL DIMENSIONS SHOWN ARE IN METRES AND/OR MILLIMETRES UNLESS OTHERWISE NOTED.



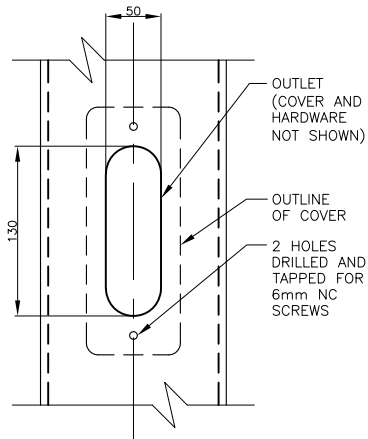
SECTION



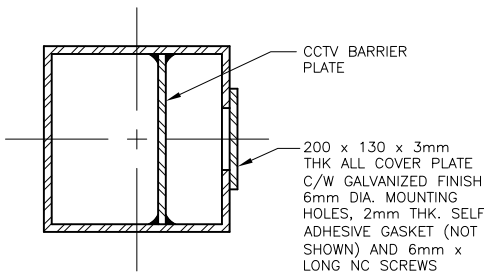
PART ELEVATION

DETAIL 2
BASE PLATE

LS-06-001.1, LS-06-002.1, LS-06-004.1



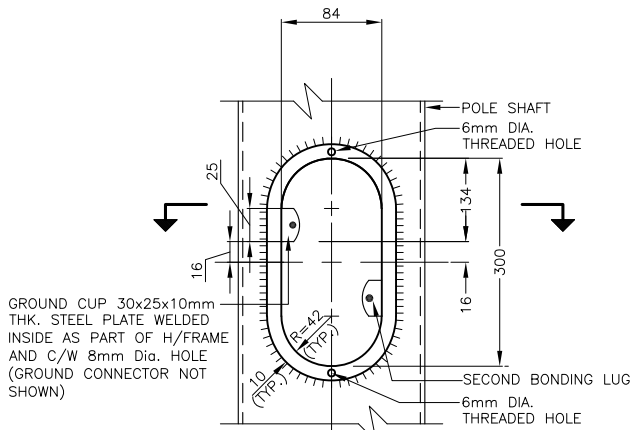
FRONT VIEW



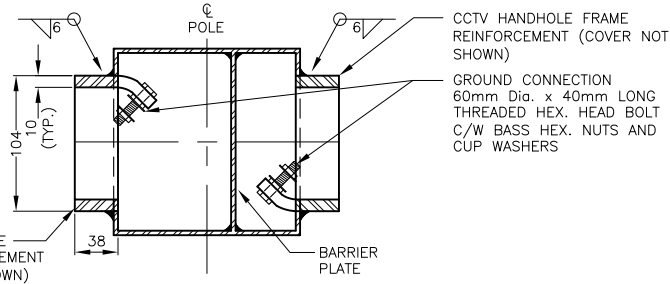
SECTION

DETAIL 5
COMM. OUTLET

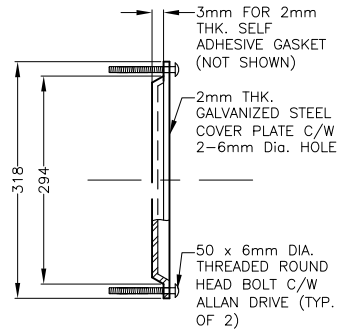
LS-06-002.1



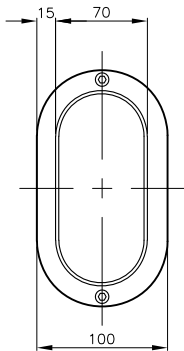
FRONT VIEW AT HANDHOLES



SECTION AT HANDHOLES



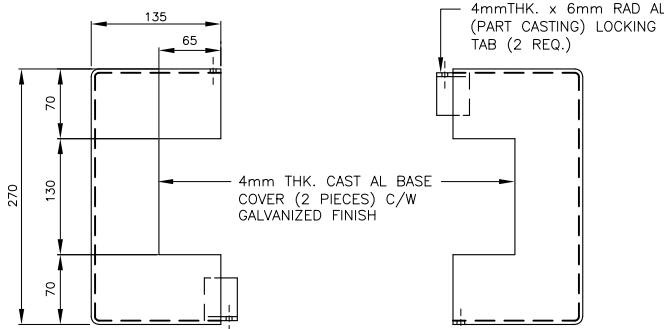
SIDE VIEW



FRONT VIEW

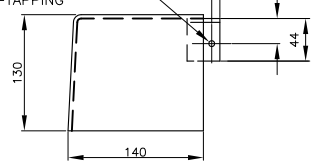
DETAIL 3
HANDHOLE AND COVER

LS-06-002.1



TOP VIEW

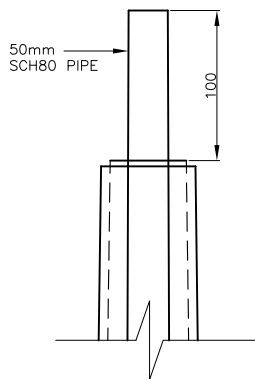
6mm DIA. HOLE (2 REQ.) FOR 6mm (#14) x 20mm LONG ROBERTSON SELF-TAPPING SCREW (2 REQ.)



SIDE VIEW

DETAIL 6
FULL BASE COVER

LS-06-002.1

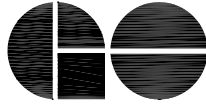


DETAIL 4
POLE TOP

LS-06-002.1

NOTE: THIS DRAWING IS PROVIDED FOR INSTRUCTIONAL DESIGN PURPOSES ONLY BASED ON METROLINX GO TRANSIT DESIGN GUIDELINES AND REQUIREMENTS. THE CONSULTANT SHALL VERIFY FOR LOCAL CODE COMPLIANCE, EXISTING SITE CONDITIONS AND INTER DISCIPLINARY DRAWING COORDINATION. ALL DIMENSIONS AND SPECIFICATIONS SHOULD BE VERIFIED BY CONSULTANT AND/OR CONTRACTOR BEFORE ACTUAL CONSTRUCTION BEGINS.

GO TRANSIT PROJECT NO. XXXXXX

REFERENCE DRAWINGS			ISSUE			REVISIONS			DRAWN BY:	DESIGNED BY:		A Division of METROLINX	FACILITY				
									X.X.X.	X.X.X.			6m CCTV POLE				
									YY/MM/DD	YY/MM/DD			BASE PLATE AND COVERS DETAILS				
									CHECKED BY:	APPROVED BY:							
									X.X.X.	X.X.X.							
									YY/MM/DD	YY/MM/DD							
									SCALE: N.T.S. FULL SIZE ONLY								
DWG NO.	TITLE		01	22/02/18	6m CCTV POLE, BASE PLATE, COVERS DETAILS									CONTRACT NO.	DWG. NO.	REV.	SHEET
			No.	DATE	ISSUED FOR	REV.	DATE							LS-06-002.1	0		