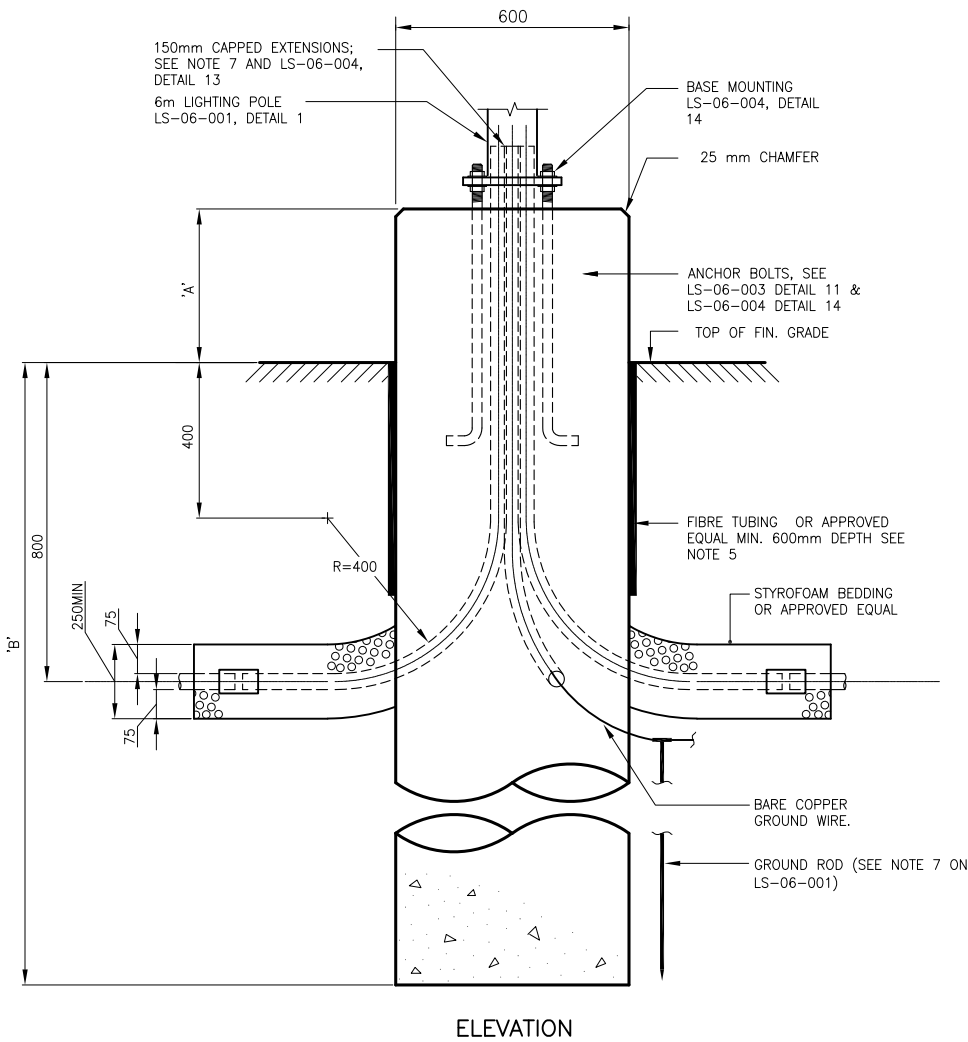
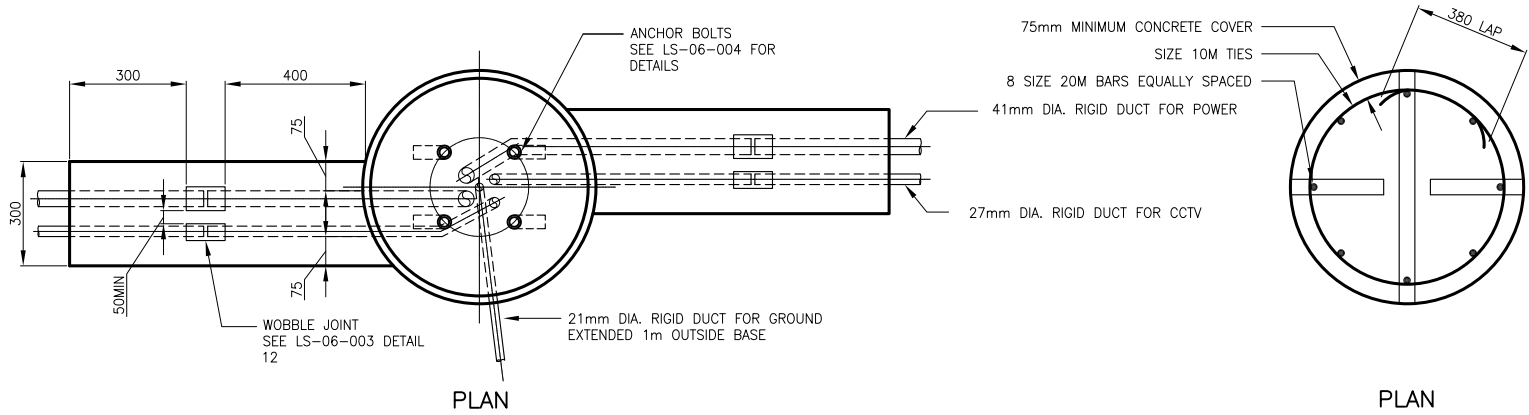


ALL DIMENSIONS SHOWN ARE IN METRES AND/OR MILLIMETRES UNLESS OTHERWISE NOTED.

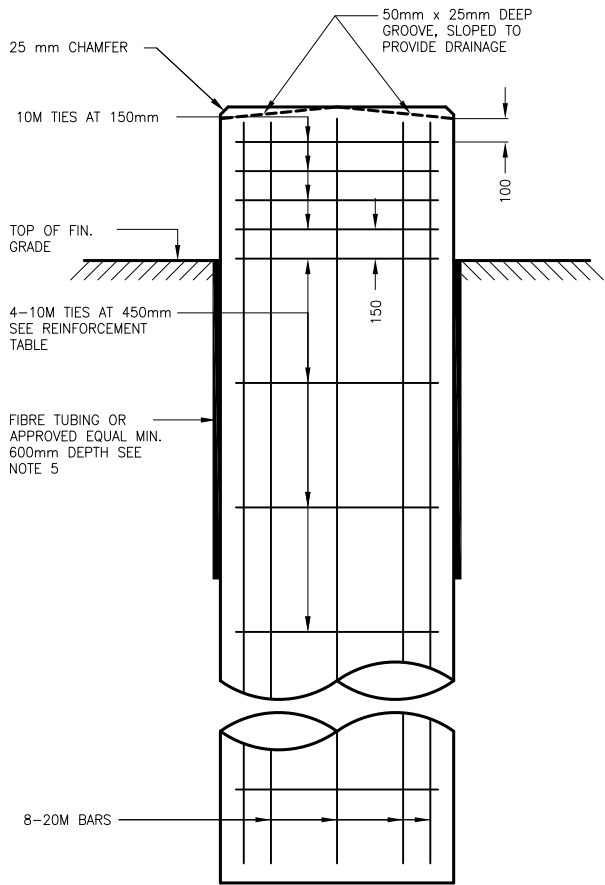
NOTES:

1. CONCRETE COMPRESSIVE STRENGTH SHALL BE 30 MPa AT 28 DAYS. PROVIDE 6 % AIR ENTRAINMENT.
2. REINFORCING SHALL CONFIRM TO C.S.A. SPECIFICATION G 30.12 M (MIN. YIELD STRENGTH OF 400 MPa)
3. CONCRETE IN FOUNDATION SHALL BE PLACED AGAINST UNDISTURBED GROUND.
4. TOP OF FOUNDATION SHALL BE TRUE LEVEL.
5. AFTER CONCRETE HARDENS THE FIBRE TUBING TO BE PEELED OFF FROM THE TOP TO THE FINISH GRADE AS INDICATED IN REINFORCEMENT TABLE COLUMN 'A'.
6. ALL RIGID DUCTS AND FITTINGS SHALL BE 'PVC' OR 'FIBRE REINFORCED' AS INDICATED ON LAYOUT DRAWINGS AND SHALL MEET THE REQUIREMENTS OF C.S.A. STANDARDS.
7. NO CONDUITS SHALL BE SET IN CONCRETE BASE WITHOUT ANCHOR SETTING TEMPLATE.

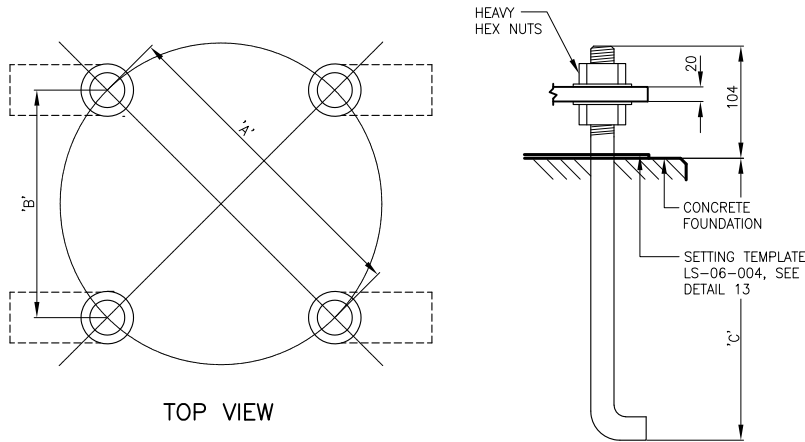
CONCRETE FOUNDATION REINFORCEMENT TABLE							
AREA	POLE LENGTH	BOLT CIRCLE DIAMETER	FOUND. HEIGHT ABOVE GRADE 'A'	NORMAL BURIAL DEPTH 'B'	LENGTH OF VERT. REINF.	NO. OF TIES	
						150mm C/C	450mm C/C
RAIL PLATFORM & WALKWAYS	6m	254mm	300mm	2.95m	2.95m	4	3
BUS, PLATFORM, LOADING, KISS & RIDE AND POLES	6m	254mm	900mm	2.50m	3.25m	4	5



DETAIL 9
CONCRETE FOUNDATION DIMENSIONS
LS-06-003.1

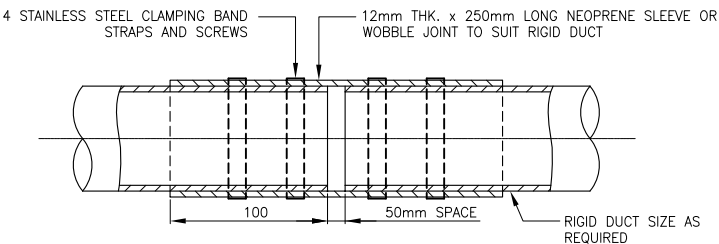


DETAIL 10
CONCRETE FOUNDATION REINFORCEMENT
LS-06-003.1



BOLT CIRCLE DIAMETER TABLE			
STUD DIAMETER (mm)	BOLT CIRCLE DIA. 'A' (mm)	STUD DISTANCE 'B' (mm)	ANCHORAGE DEPTH 'C' (mm)
22 (7/8")	254 (10")	180 (7")	609

DETAIL 11
ANCHORAGE ASSEMBLY
LS-06-001.1
LS-06-003.1
LS-06-004.1



DETAIL 12
WOBBLE JOINT
LS-06-001.1
LS-06-003.1

NOTES:

1. RIGID DUCTS AND FITTINGS SHALL BE RIGID PVC AND SHALL MEET THE REQUIREMENTS OF CSA STANDARD.
2. ANCHOR BOLTS, HEX NUTS AND WASHERS SHALL BE MADE OF SAE 10-30 STEEL AND WILL BE HOT DIP GALVANIZED IN ACCORDANCE WITH CSA STANDARD G-164 SPECIFICATIONS.
3. STUDS WILL BE GIVEN A LIBERAL COATING OF WHITE NON-STAINING GREASE.
4. EACH ANCHORAGE ASSEMBLY SHALL BE FINISHED WITH ONE SETTING TEMPLATE FOR ACCURATE POSITION OF THE ANCHORAGE ASSEMBLY AND CONDUITS WITHIN THE FORM. TEMPLATE TO BE REMOVED AFTER CONCRETE HARDENS.

NOTE:
THIS DRAWING IS PROVIDED FOR INSTRUCTIONAL DESIGN PURPOSES ONLY BASED ON METROLINX GO TRANSIT DESIGN GUIDELINES AND REQUIREMENTS. THE CONSULTANT SHALL VERIFY FOR LOCAL CODE COMPLIANCE, EXISTING SITE CONDITIONS AND INTER DISCIPLINARY DRAWING COORDINATION. ALL DIMENSIONS AND SPECIFICATIONS SHOULD BE VERIFIED BY CONSULTANT AND/OR CONTRACTOR BEFORE ACTUAL CONSTRUCTION BEGINS.

METROLINX PROJECT NO. XXXXXX

REFERENCE DRAWINGS		ISSUE		REVISIONS		DRAWN BY:	DESIGNED BY:										
						X.X.X.	YY/MM/DD										
						YY/MM/DD	YY/MM/DD										
						YY/MM/DD	YY/MM/DD										
		01	22/02/18	6m CCTV POLE , DIMENSIONS, REINFORCEMENT, AND WOBBLE JOINT DETAILS													
DWG NO.	TITLE	No.	DATE	ISSUED FOR		REV.	DATE										



A Division of METROLINX

FACILITY

6m CCTV POLE
DIMENSIONS, REINFORCEMENT AND
WOBBLE JOINT DETAILS

CONTRACT NO.	DWG. NO.	REV.	SHEET
	LS-06-003.1	0	