

METRIC

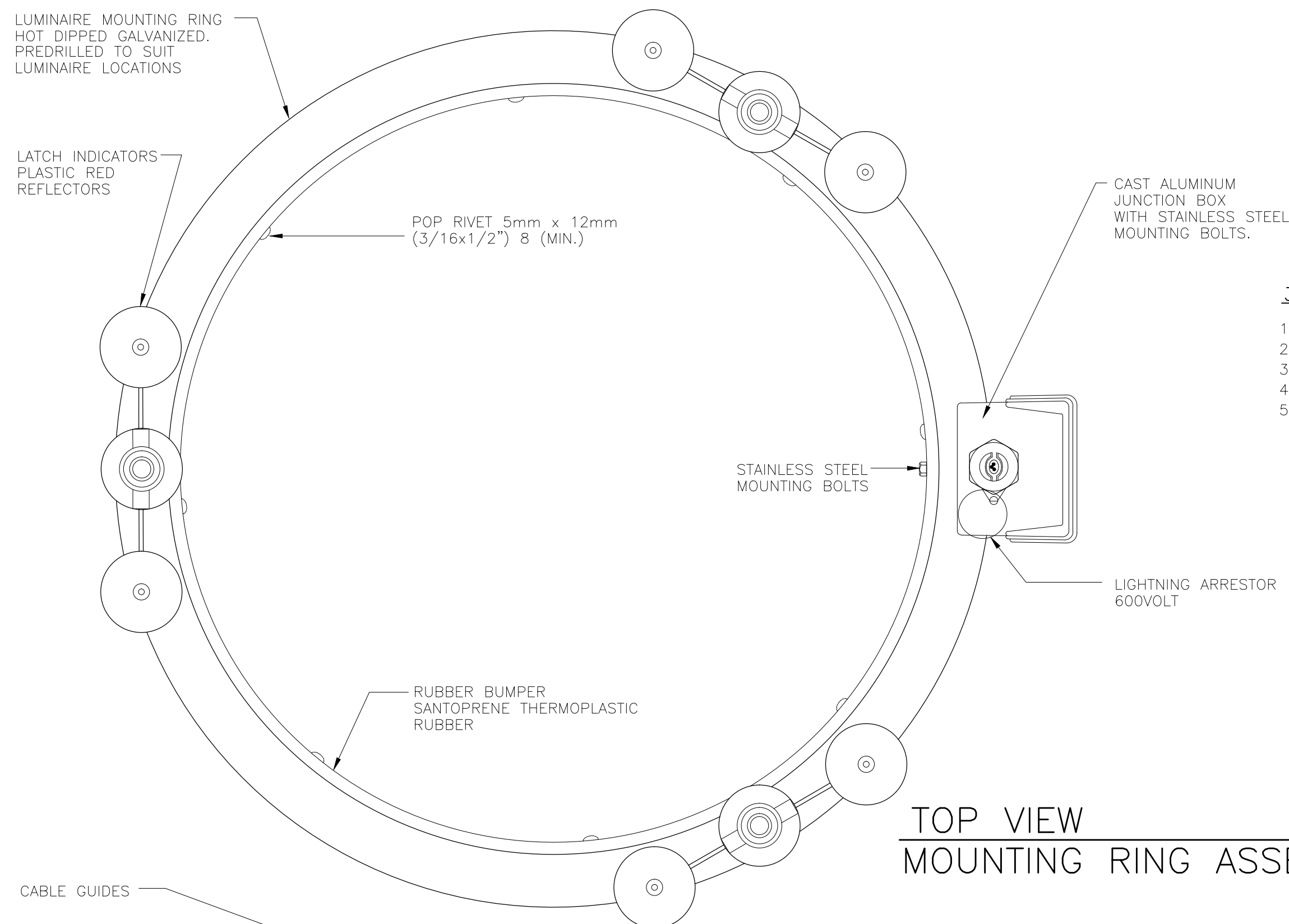
ALL DIMENSIONS SHOWN ARE IN METRES AND/OR MILLIMETRES UNLESS OTHERWISE NOTED.

NOTES:

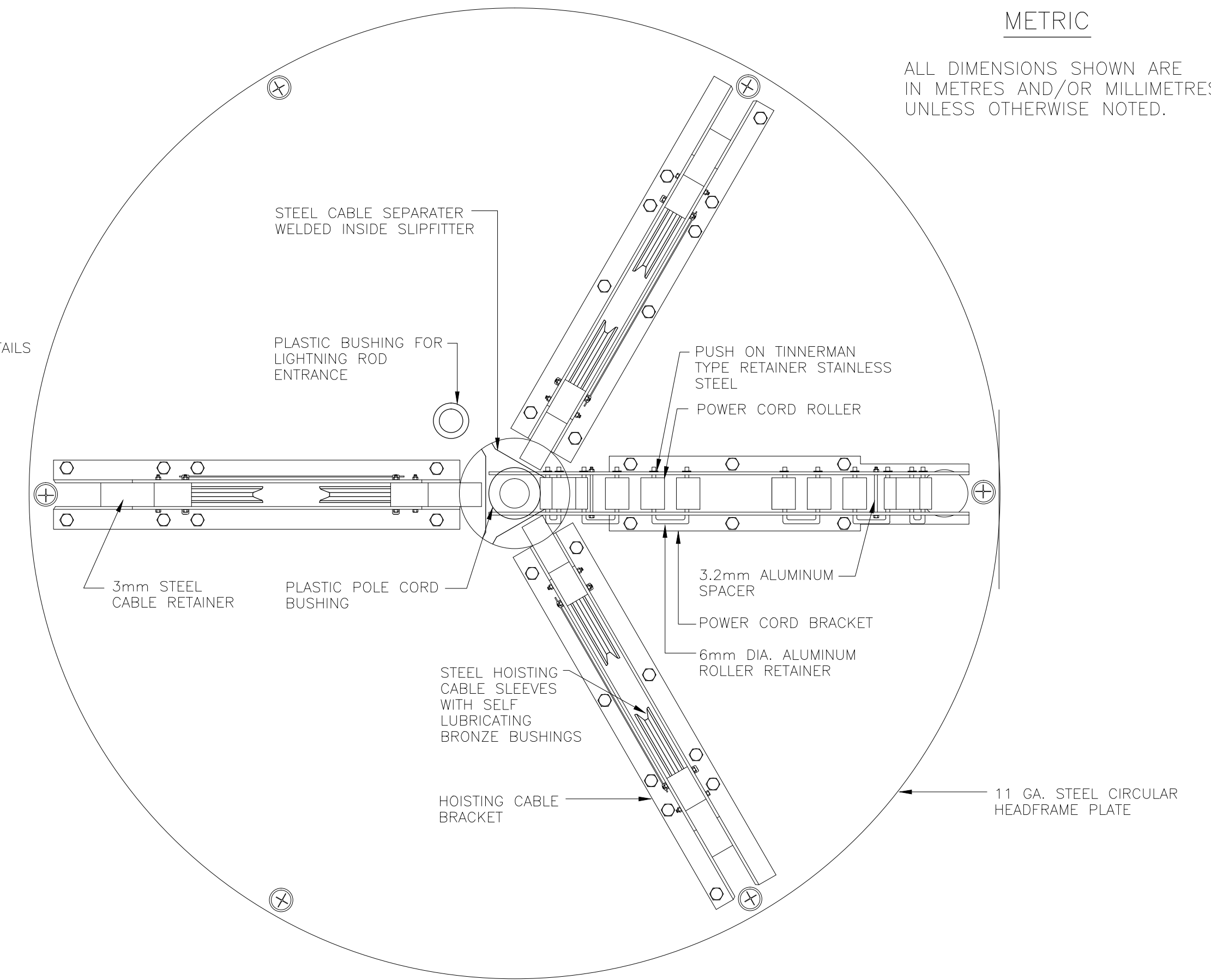
1. ALL THREADED PARTS AND HARDWARE TO BE STAINLESS STEEL UNLESS OTHERWISE NOTED.
2. ALL STRUCTURAL MEMBERS ARE TO BE ZINC ELECTROPLATED OR HOT DIPPED GALVANIZED.
3. ALL WELDS TO BE IN ACCORDANCE WITH CSA W47-1. ELECTROPLATED OR HOT DIPPED GALVANIZED.

30m LIGHTING POLE STANDARD REFERENCE DRAWINGS

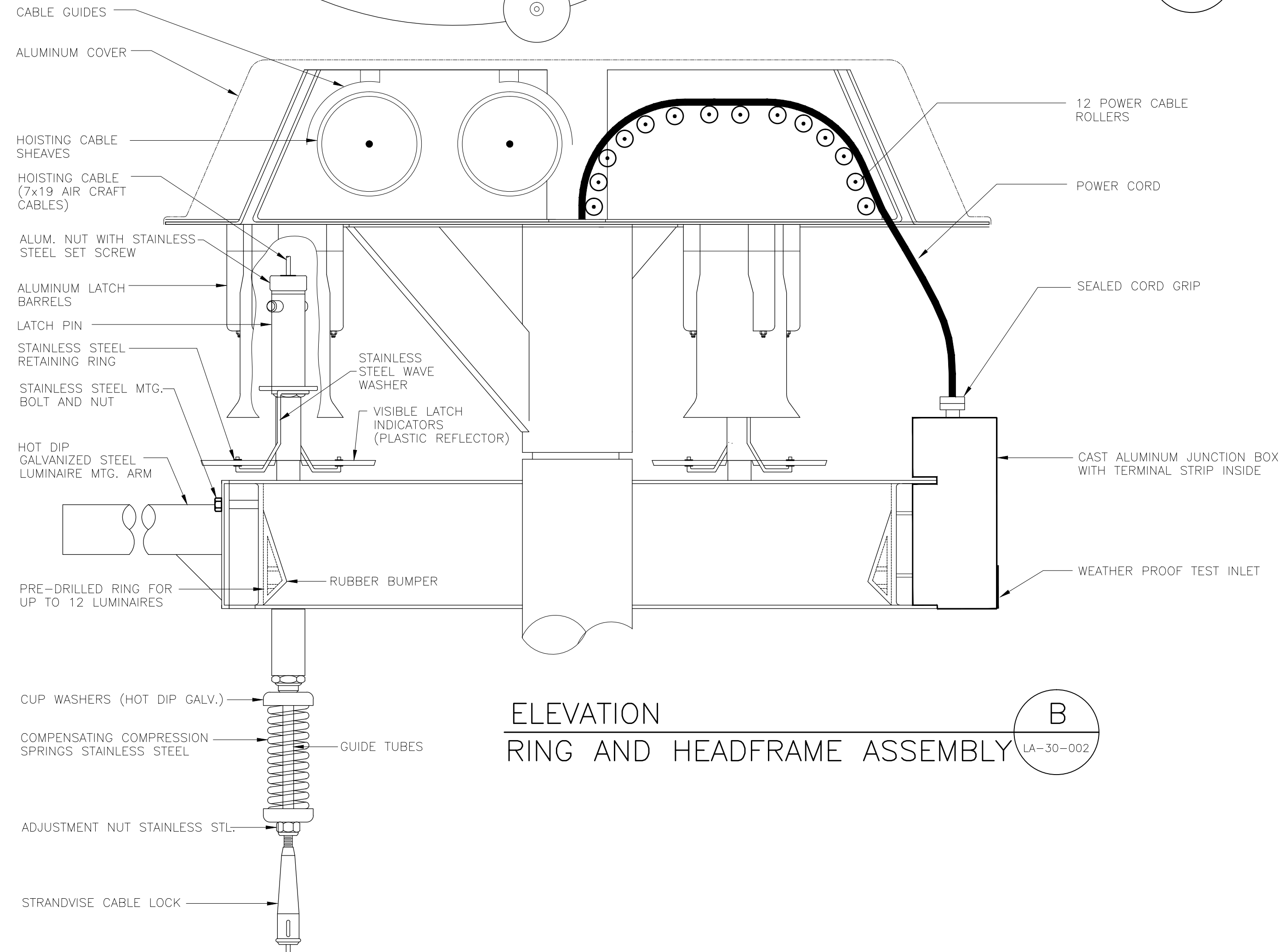
1. LS-30-001 ASSEMBLY DETAIL
2. LS-30-003 ELECTRICAL MISCELLANEOUS DETAILS
3. LS-30-004 CONCRETE FOUNDATION DIMENSIONS AND REINFORCEMENT DETAILS
4. LS-30-005 POLE BASE AND ANCHORAGE DETAILS
5. LS-30-006 WIRING DIAGRAMS



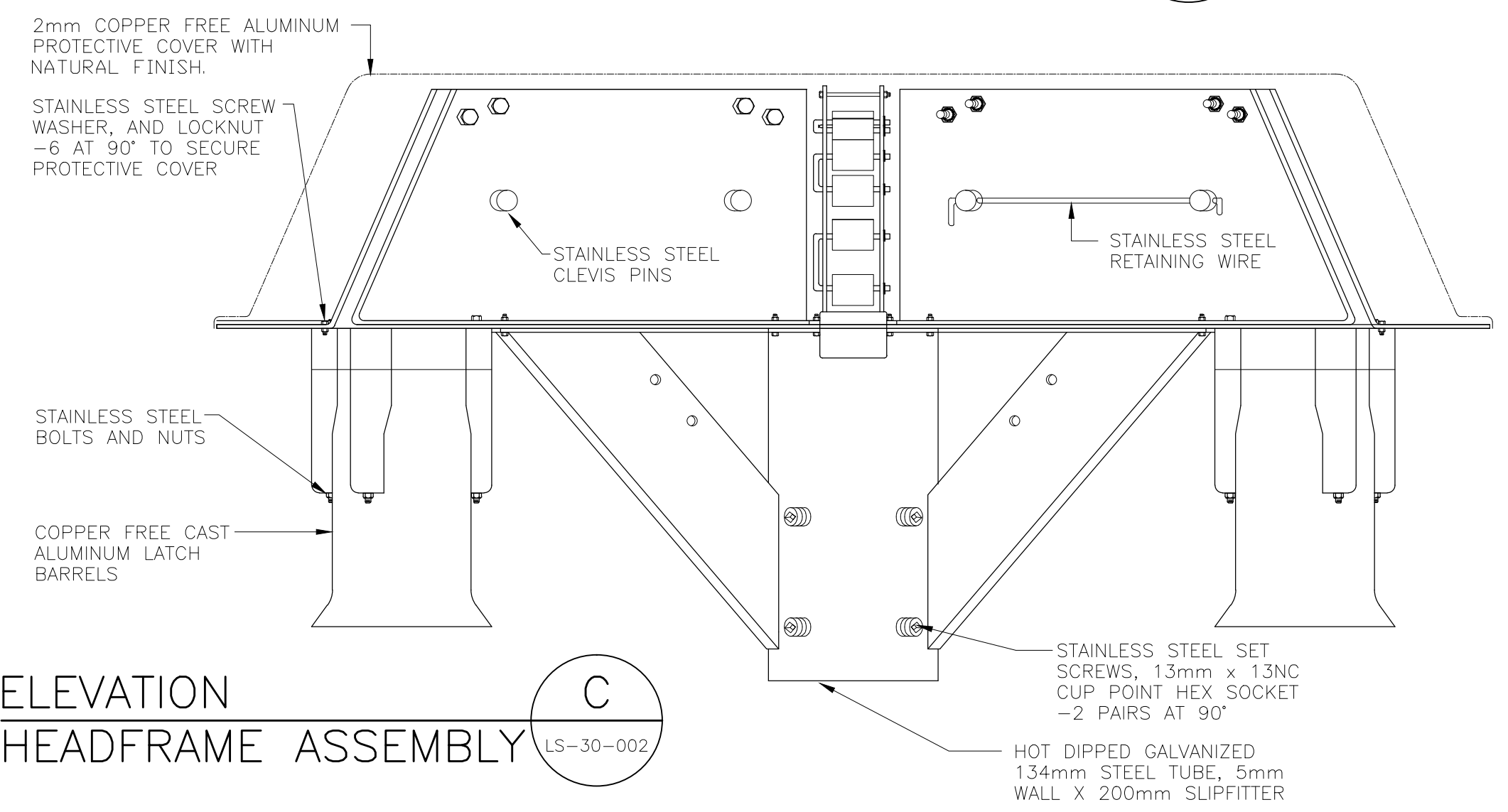
TOP VIEW MOUNTING RING ASSEMBLY 1 LS-30-002



PLAN HEADFRAME ASSEMBLY 1 LS-30-002



ELEVATION RING AND HEADFRAME ASSEMBLY B LA-30-002



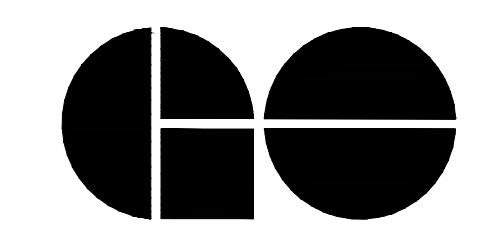
ELEVATION HEADFRAME ASSEMBLY C LS-30-002

NOTE: THIS DRAWING IS PROVIDED FOR INSTRUCTIONAL DESIGN PURPOSES ONLY BASED ON METROLINX GO TRANSIT DESIGN GUIDELINES AND REQUIREMENTS. THE CONSULTANT SHALL VERIFY FOR LOCAL CODE COMPLIANCE, EXISTING SITE CONDITIONS AND INTER DISCIPLINARY DRAWING COORDINATION. ALL DIMENSIONS AND SPECIFICATIONS SHOULD BE VERIFIED BY CONSULTANT AND/OR CONTRACTOR BEFORE ACTUAL CONSTRUCTION BEGINS.

METROLINX PROJECT NO. XXXXXX

REFERENCE DRAWINGS	ISSUE	REVISIONS	DRAWN BY:	DESIGNED BY:
			X.X.X. YY/MM/DD	YY/MM/DD
			CHECKED BY:	APPROVED BY:
			YY/MM/DD	YY/MM/DD
			SCALE: 1:XXX	FULL SIZE ONLY
DWG. NO.	TITLE	NO. DATE	ISSUED FOR	REV. DATE

1	20/12/13	DISCLAIMER NOTE
---	----------	-----------------



A Division of METROLINX

XXXXXXXXX STATION
30m (HIGH MAST) LIGHT POLE
RING AND HEAD FRAME ASSEMBLY

CONTRACT NO. XX-200X-EN-XXX	DWG. NO. LS 30-002	REV. 1	SHEET
--------------------------------	-----------------------	-----------	-------