

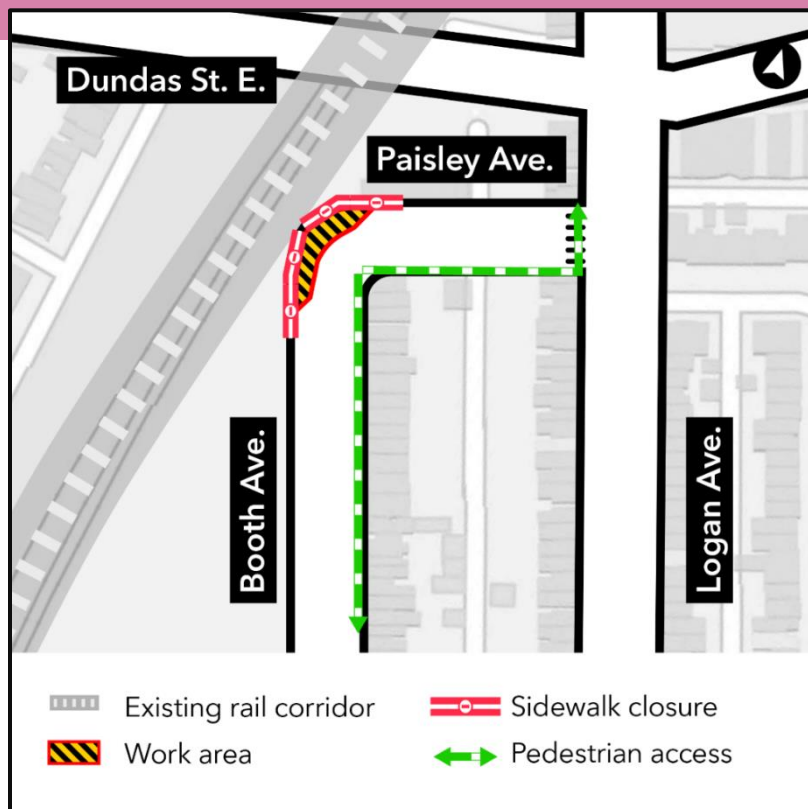
Retaining wall and noise barrier installation at Paisley Ave. and Booth Ave.

Expected start date: Starting as early as Wednesday, January 29, 2025

Expected duration: Approximately three (3) weeks

Hours of work: Daytime: Monday - Saturday, between 7 a.m. - 7 p.m.

Overnight: There will be three nights of overnight work from Wednesday, January 29 - Friday, January 31, 2025



What is happening?

Overnight Noise Barrier Work:

- As early as Wednesday January 29, 2025, there will be three nights of overnight work to install the final section of noise barriers at the corner of Booth Avenue and Paisley Avenue.
- Crews must cross live train tracks to access the work area at Booth and Paisley. Therefore, the work can only be completed safely at night when trains are not running.

- Activities will include minor concrete pours and noise panel installation. **No compaction will take place overnight.**

Daytime sidewalk closure:

- Once the noise barriers are installed, a portion of the traffic lane and sidewalk at Paisley Avenue and Booth Avenue will be closed to safely complete retaining wall construction (see map above).
- The sidewalk closure will start as early as Monday February 3, 2025, for approximately three weeks.
- Retaining wall construction will take place during the daytime Monday to Saturday between 7 a.m. – 7 p.m.
- Activities will include backfilling and compaction in front of the base of the retaining walls. This work is expected to cause vibrations that may be felt in the area surrounding the work. Crews will use smaller plate tampers to minimize vibrations.
- Once the retaining wall is completed, crews will install a staircase within the site and concrete pours will take place to install the noise wall posts and the foundations for the overhead wire poles.
- Crews will be adding topsoil in front of the retaining wall behind the fence in Jimmie Simpson Park. This work will be done using hand tools and will not cause noise or vibrations.
- Traffic control personnel will be stationed at the intersection to direct vehicles and support pedestrians with navigating around the closure.
- The sidewalk and lane closure will not impact access for emergency or Wheel-Trans vehicles.
- For further details, please refer to the **Traffic and pedestrian details** section below.

Traffic and pedestrian details

- The sidewalk at the north-west corner of Paisley Avenue and Booth Avenue will be closed - the sidewalk at the south-east corner of the intersection will be open to maintain pedestrian access.
- Paisley Avenue and Booth Avenue will be reduced to one lane of traffic at the intersection.
- **The road and sidewalk will reopen after each workday.**

What to expect

- Crews will install noise barrier panels in the rail corridor overnight. Mitigations measures will be implemented as required and noise and vibration monitoring will remain in place to ensure acceptable levels are maintained.

Contact us:

Call us 24/7 at: [416-202-5100](tel:416-202-5100)

Write to us at: ontarioline@metrolinx.com

Find us on Twitter, Facebook, and

Instagram: [@ontarioline](https://www.instagram.com/ontarioline)

Visit the website:

www.metrolinx.com/ontarioline

Visit our community offices:

770 Queen Street East (near Queen & Broadview)

General hours:

Mondays, Tuesdays, and Fridays: 9 a.m. to 5 p.m.

Wednesdays and Thursdays: 10 a.m. to 6 p.m.

Thorncliffe Park:

East York Town Centre

45 Overlea Blvd., Toronto, ON M4H 1C3

Unit 153 (across from the Rogers store)

General hours:

Monday to Friday, 9 a.m. to 5 p.m.

- Due to space constraints and the access road at Dundas St. E. closing, crews need to close the sidewalk and access this portion of the rail corridor from the street to safely complete the retaining wall work.
- Noise from construction equipment including loaders, compacters, dump trucks, a concrete pump, trucks, and other equipment can be expected during the daytime.
- Daytime noise and vibration can be expected during this work - monitoring is in place to ensure acceptable levels are maintained.
- The staircase will be delivered via flatbed truck and assembled within the work site.
- Advance signage will be in place to direct vehicles and pedestrians.
- Traffic barrels, fencing, and barriers will be in place to separate and secure work zones.
- Construction equipment and materials will be properly secured within the work zones.
- Traffic control personnel will be present while this work takes place.
- Work may be delayed due to weather conditions or unforeseen circumstances.

About the project

- 15.6-kilometre subway line that will make it faster and easier to travel within Toronto and beyond.
- 15 stops and more than 40 transit connections, including GO, TTC, and more.
- Approximately 30 minutes from one end of the line to the other.
- 28,000 fewer cars on the road each day.

Contact us:

Call us 24/7 at: [416-202-5100](tel:416-202-5100)

Write to us at: ontarioline@metrolinx.com

Find us on Twitter, Facebook, and

Instagram: [@ontarioline](https://www.instagram.com/ontarioline)

Visit the website:

www.metrolinx.com/ontarioline

Visit our community offices:

770 Queen Street East (near Queen & Broadview)

General hours:

Mondays, Tuesdays, and Fridays: 9 a.m. to 5 p.m.

Wednesdays and Thursdays: 10 a.m. to 6 p.m.

Thorncliffe Park:

East York Town Centre

45 Overlea Blvd., Toronto, ON M4H 1C3

Unit 153 (across from the Rogers store)

General hours:

Monday to Friday, 9 a.m. to 5 p.m.