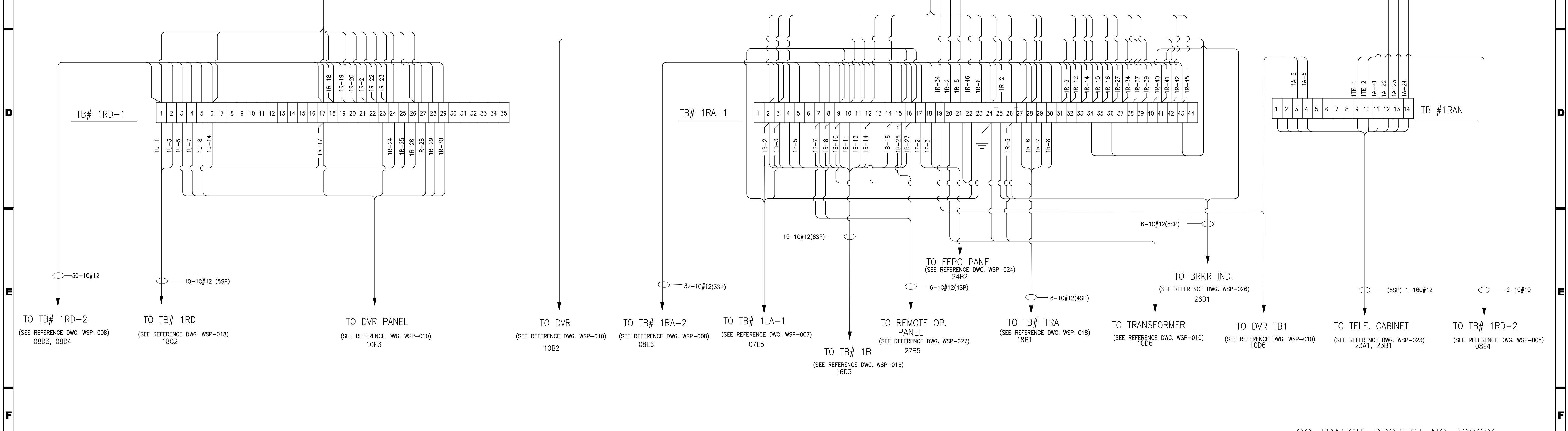
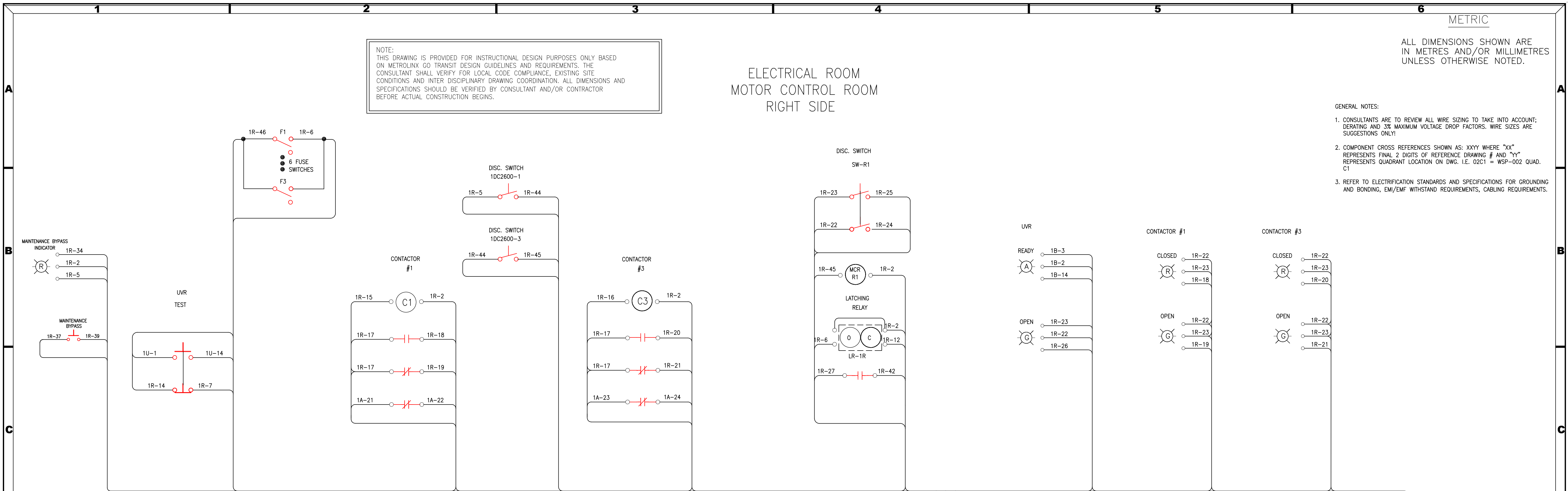


ALL DIMENSIONS SHOWN ARE IN METRES AND/OR MILLIMETRES UNLESS OTHERWISE NOTED.

NOTE:
THIS DRAWING IS PROVIDED FOR INSTRUCTIONAL DESIGN PURPOSES ONLY BASED ON METROLINX GO TRANSIT DESIGN GUIDELINES AND REQUIREMENTS. THE CONSULTANT SHALL VERIFY FOR LOCAL CODE COMPLIANCE, EXISTING SITE CONDITIONS AND INTER DISCIPLINARY DRAWING COORDINATION. ALL DIMENSIONS AND SPECIFICATIONS SHOULD BE VERIFIED BY CONSULTANT AND/OR CONTRACTOR BEFORE ACTUAL CONSTRUCTION BEGINS.

ELECTRICAL ROOM
MOTOR CONTROL ROOM
RIGHT SIDE

- GENERAL NOTES:
- CONSULTANTS ARE TO REVIEW ALL WIRE SIZING TO TAKE INTO ACCOUNT: DERATING AND 3% MAXIMUM VOLTAGE DROP FACTORS. WIRE SIZES ARE SUGGESTIONS ONLY!
 - COMPONENT CROSS REFERENCES SHOWN AS: XXYY WHERE "XX" REPRESENTS FINAL 2 DIGITS OF REFERENCE DRAWING # AND "YY" REPRESENTS QUADRANT LOCATION ON DWG. I.E. 02C1 = WSP-002 QUAD. C1
 - REFER TO ELECTRIFICATION STANDARDS AND SPECIFICATIONS FOR GROUNDING AND BONDING, EMI/EMF WITHSTAND REQUIREMENTS, CABLING REQUIREMENTS.

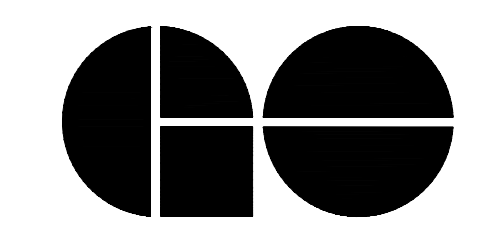


GO TRANSIT PROJECT NO. XXXXX

Aug 15/18 12:26pm
AutoCAD drawing: WSP-009.dwg

REFERENCE DRAWINGS		ISSUE		REVISIONS		
WSP-008	TRACKSIDE -- RIGHT SIDE WIRING DIA.			5	FEB. 2018	
WSP-014	MOTOR CONTROL CENTRE ELEVATION			4	DEC 2013	
				3	MAR 2013	
				2	JULY 2012	
				1	SEPT.2010	
DWG. NO.	TITLE	REV.	DATE	ISSUED FOR	REV.	DATE

DRAWN BY:	DESIGNED BY:
CHECKED BY:	APPROVED BY:
SCALE: N.T.S.	FULL SIZE ONLY



A Division of Metrolinx

XXXXXX WAYSIDE POWER MOTOR CONTROL CENTRE -- RIGHT SIDE WIRING DIAGRAM			
CONTRACT NO. XXXXXXXXXXXX	DWG. NO. WSP-009	REV. 5	SHEET XX