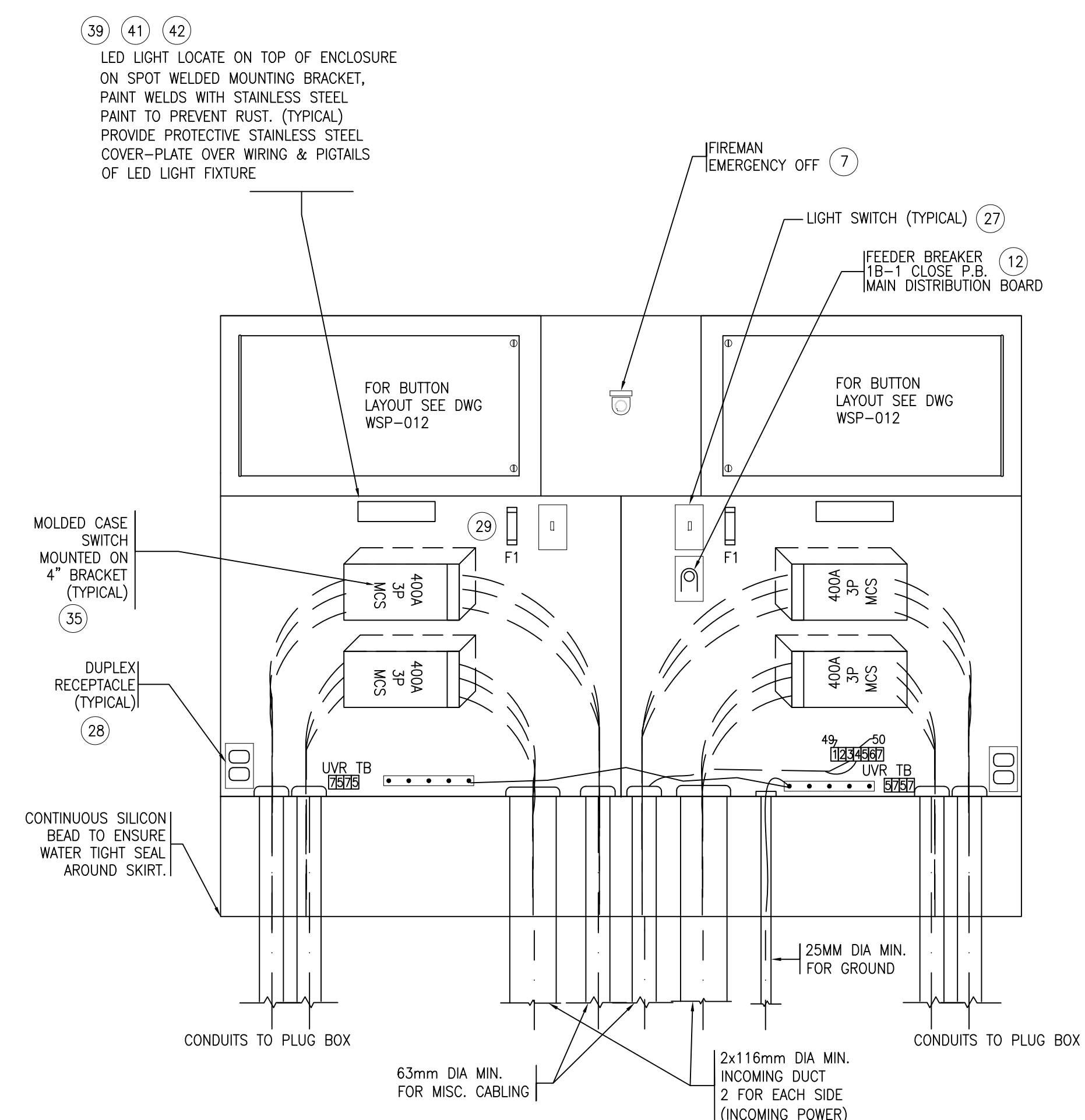
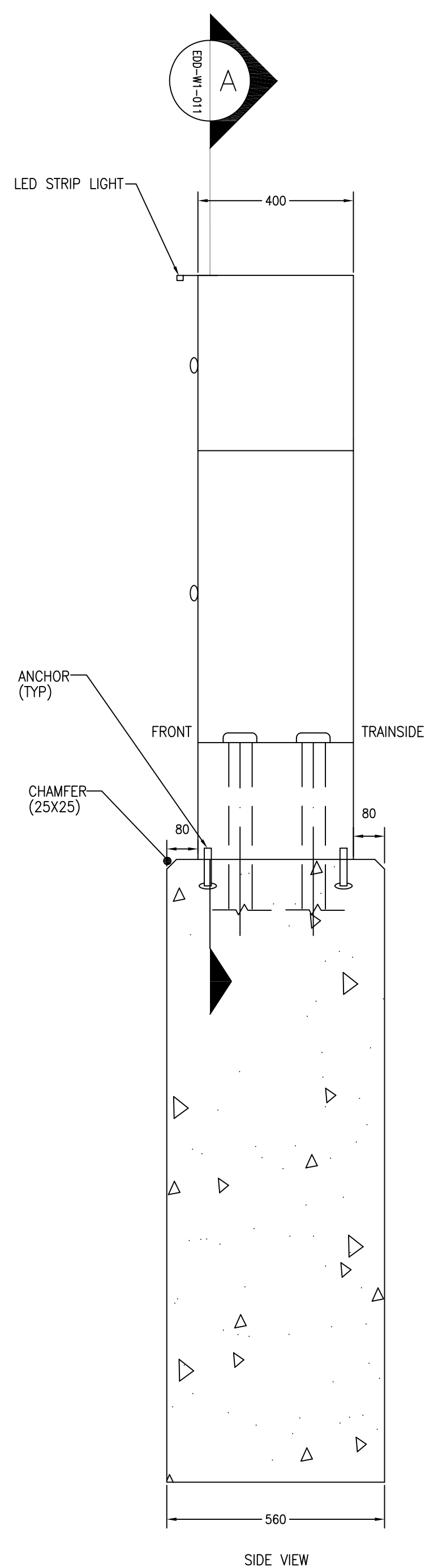
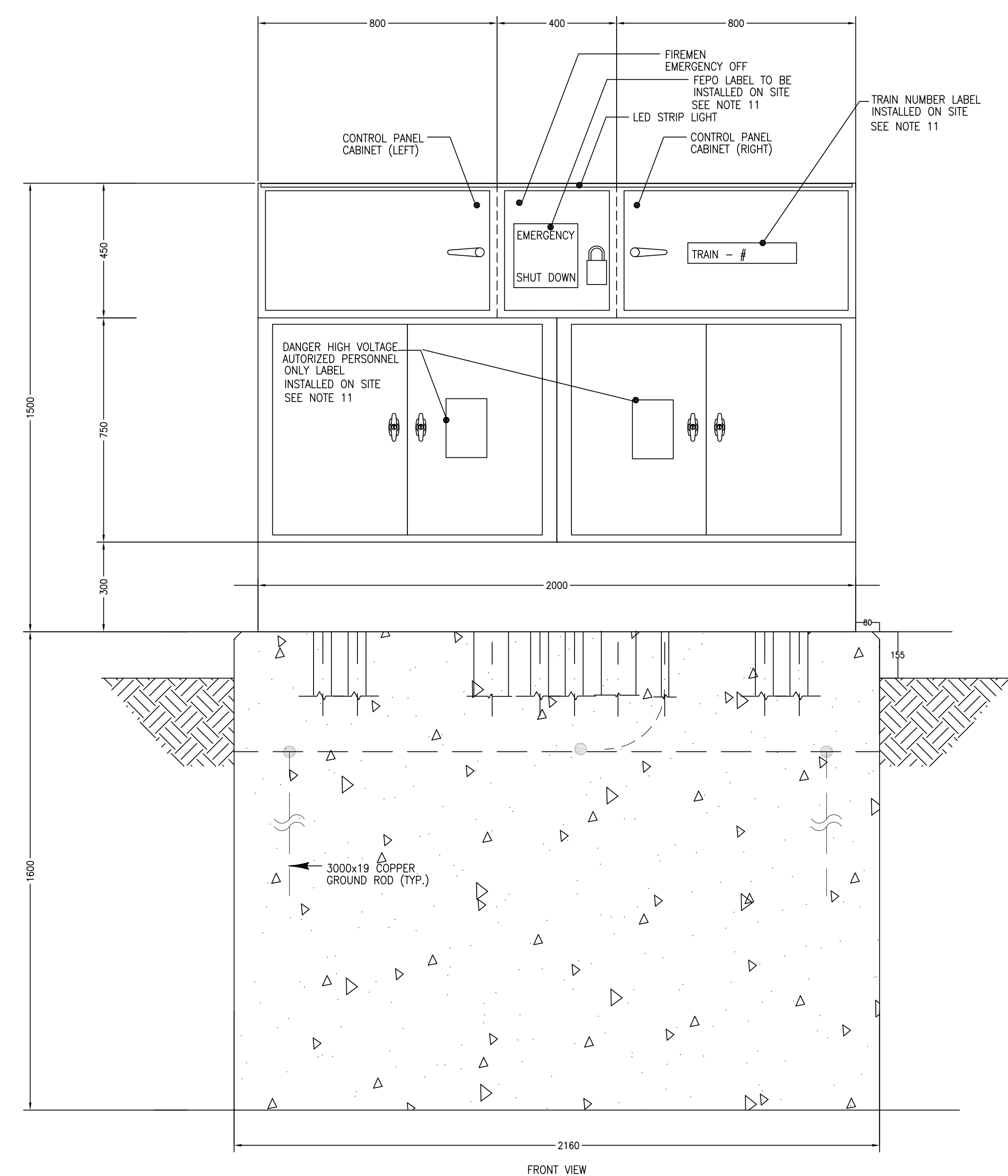


METRIC

ALL DIMENSIONS SHOWN ARE IN METRES AND/OR MILLIMETRES UNLESS OTHERWISE NOTED.



EQUIPMENT ENCLOSURE:
INTEGRAL CABINET MADE OF 12 GAUGE 304 STAINLESS STEEL, CONSISTS OF:
TWO DISCONNECT SWITCH COMPARTMENTS C/W,
INNER PANEL, REMOVABLE CENTRE POST, KEYS AUTOMOTIVE HANDLE AND 3 POINT LATCH,
ASSEMBLY BASE COMPARTMENT, TWO CONTROL PANEL COMPARTMENTS,
ONE FIREMEN EMERG. OFF COMPARTMENT.

GENERAL NOTES:

- CONSULTANTS ARE TO REVIEW ALL WIRE SIZING TO TAKE INTO ACCOUNT; DERATING AND 3% MAXIMUM VOLTAGE DROP FACTORS. WIRE SIZES ARE SUGGESTIONS ONLY!
- COMPONENT CROSS REFERENCES SHOWN AS: XXYY WHERE "XX" REP FINAL 2 DIGITS OF DWG # AND "YY" REP QUADRANT LOCATION ON DWG. IE. 02C1 = WSP-002 QUAD. C1
- CONCRETE FOUNDATION, GROUNDING GRID AND SLEEVES INTO WAYSIDE CABINET ARE NIC (NOT IN CONTRACT) AND TO BE PROVIDED AS PART OF INSTALLATION TENDER.
- REINFORCED CONCRETE MATERIALS, TESTING, CONSTRUCTION AND DESIGN SHALL CONFORM TO CAN 3-A23.1/23.2-94
i) CONCRETE STRENGTH AT 28 DAYS = 30 MPa
ii) STRUCTURAL SYNTHETIC REINFORCED FIBRE CONCRETE
- EMBEDDED CONDUIT LOCATION DIMENSIONS SPECIFIC TO PANEL AND BOX REQUIREMENTS
- OPENINGS IN THE BOTTOM OF WAYSIDE CABINET ARE TO BE MADE TO SUIT THE CONDUIT LAYOUT.
- ALL SEAMS BETWEEN COMPARTMENTS IN WAYSIDE ASSEMBLY SHALL BE CONTINUOUSLY WELDED.
- ALL DOORS SHALL OPEN 90 DEGREES.
- FIREMEN BUTTON SHALL BE MOUNTED IN THE CAST BOX.
- SUPPLIER OF CABINET TO PROVIDE TWO 25mm AND FIVE 63mm PRE-PUNCHED HOLES. HOLES ARE TO BE PUNCHED IN STAINLES STEEL PLATES BETWEEN CONTROL AND POWER CABINETS TO ACCOMMODATE FOR CABLING
- LABEL SUPPLIED AND INSTALLED BY CONTRACTOR.
- CONTRACTOR TO SUPPLY AND INSTALL ALL REQUIRED ARCH FLASH WARNING LABELS.
- REFER TO ELECTRIFICATION STANDARDS AND SPECIFICATIONS FOR GROUNDING AND BONDING, EMI/EMF WITHSTAND REQUIREMENTS, CABLING REQUIREMENTS.

NOTE:
THIS DRAWING IS PROVIDED FOR INSTRUCTIONAL DESIGN PURPOSES ONLY BASED ON METROLINX GO TRANSIT DESIGN GUIDELINES AND REQUIREMENTS. THE CONSULTANT SHALL VERIFY FOR LOCAL CODE COMPLIANCE, EXISTING SITE CONDITIONS AND INTER DISCIPLINARY DRAWING COORDINATION. ALL DIMENSIONS AND SPECIFICATIONS SHOULD BE VERIFIED BY CONSULTANT AND/OR CONTRACTOR BEFORE ACTUAL CONSTRUCTION BEGINS.

GO TRANSIT PROJECT NO. XXXXX

REFERENCE DRAWINGS	ISSUE	REVISIONS	DRAWN BY:	DESIGNED BY:
WSP-012 WAYSIDE STATION EQUIPMENT ARRANGEMENT 2 OF 3				
WSP-013 WAYSIDE STATION EQUIPMENT ARRANGEMENT 3 OF 3				
DWG NO.	TITLE	REV. DATE	ISSUED FOR	REV. DATE

CHECKED BY:	APPROVED BY:
SCALE: N.T.S.	FULL SIZE ONLY



A Division of Metrolinx

XXXXXX WAYSIDE POWER WAYSIDE CABINET ALTERNATE EQUIPMENT ARRANGEMENT 1 OF 3			
CONTRACT NO. XXXXXXXXXX	DWG. NO. WSP-011A	REV. 1	SHEET XX