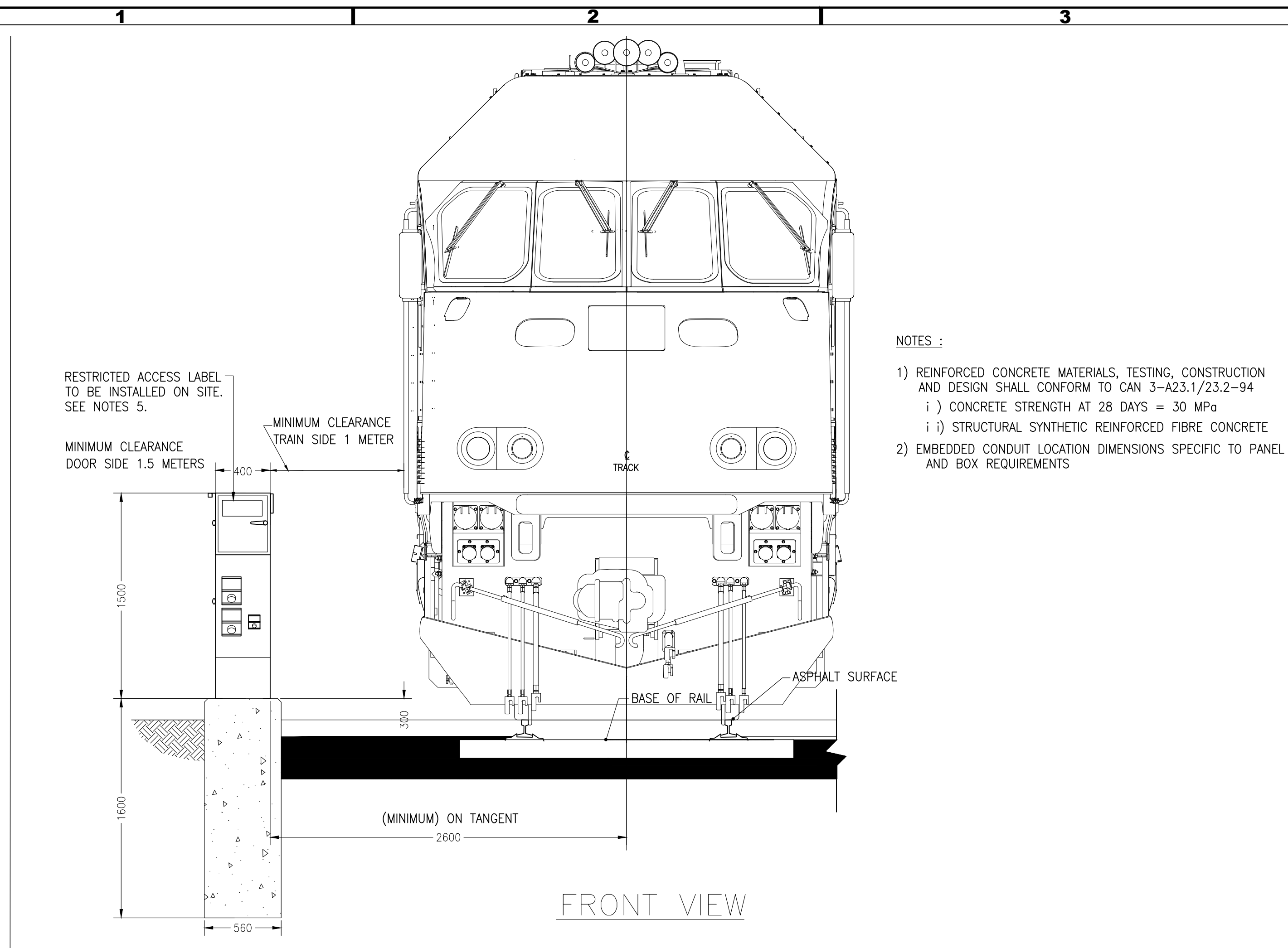
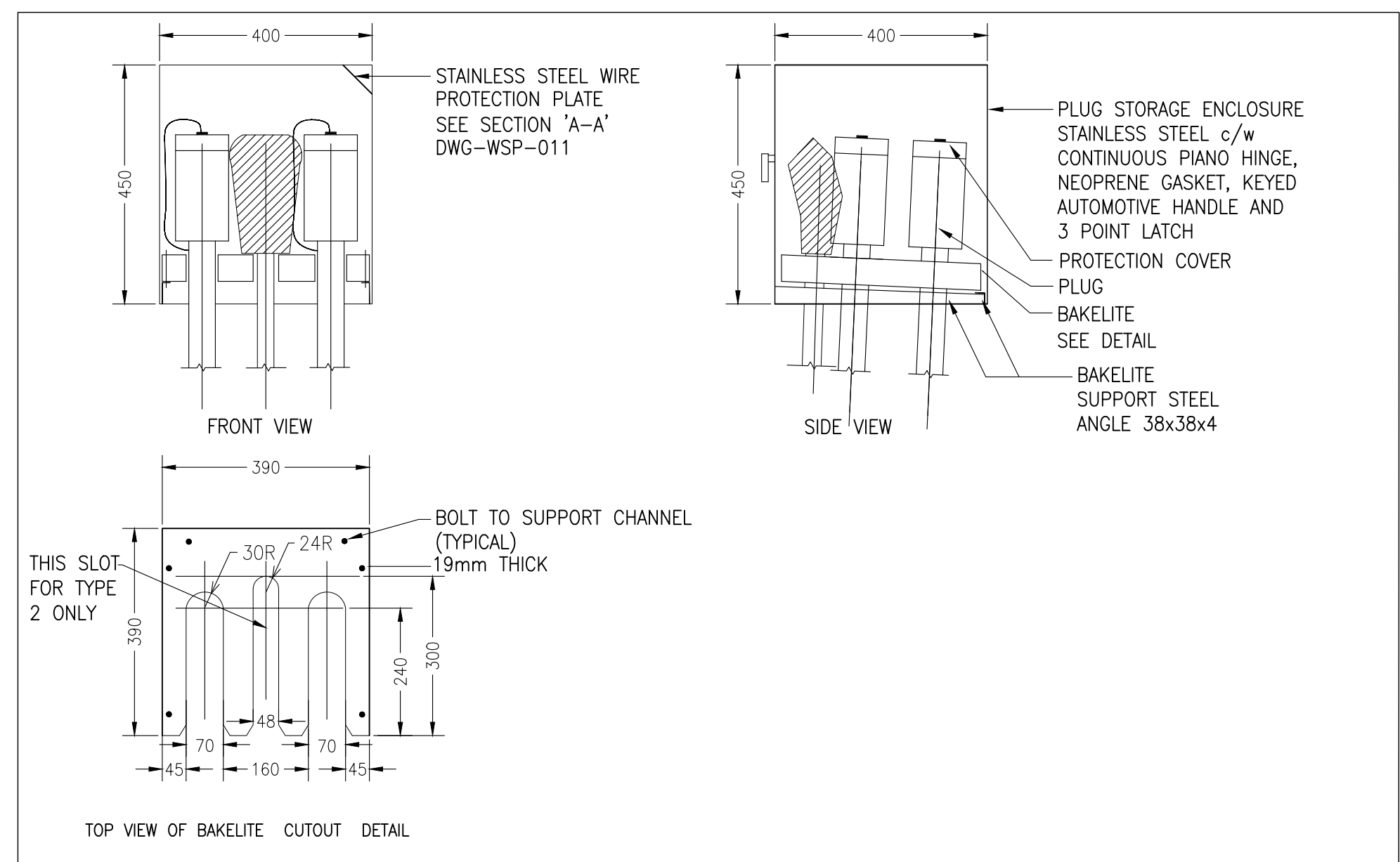


METRIC

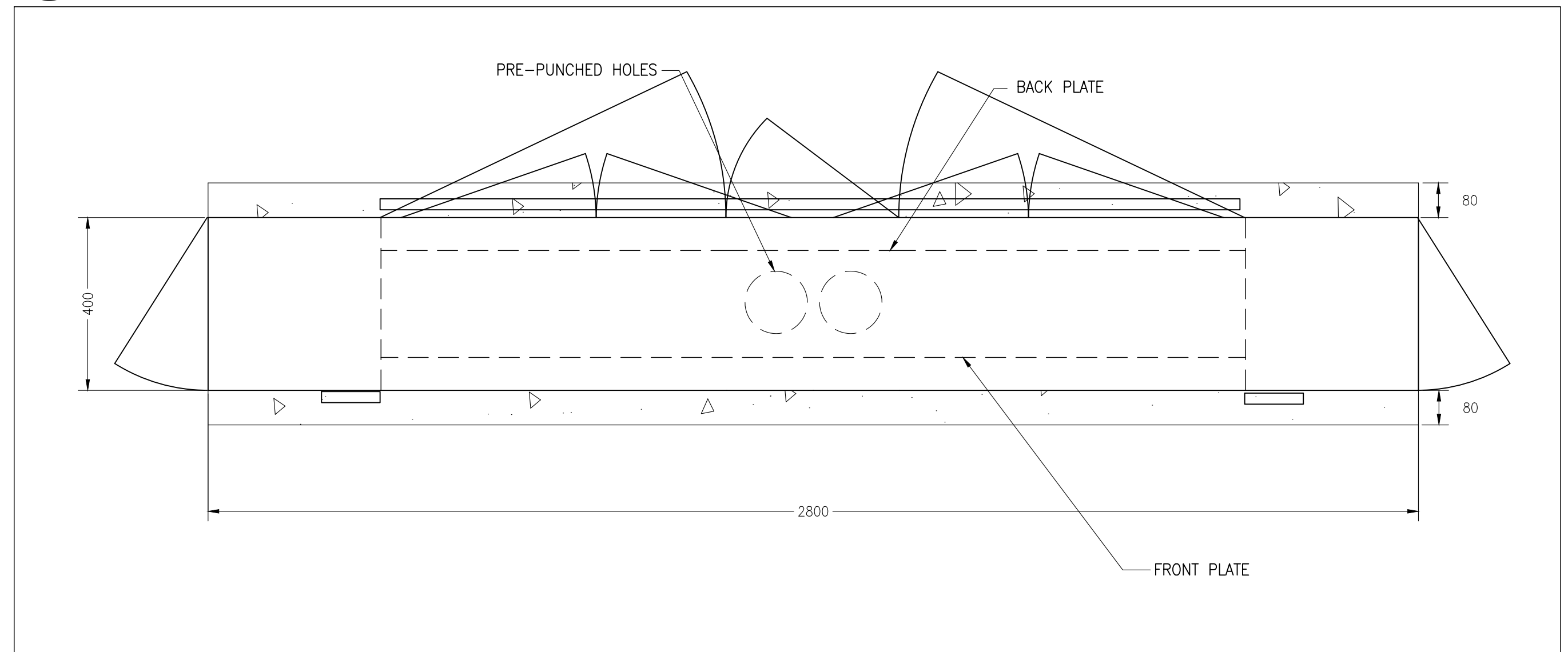
ALL DIMENSIONS SHOWN ARE IN METRES AND/OR MILLIMETRES UNLESS OTHERWISE NOTED.



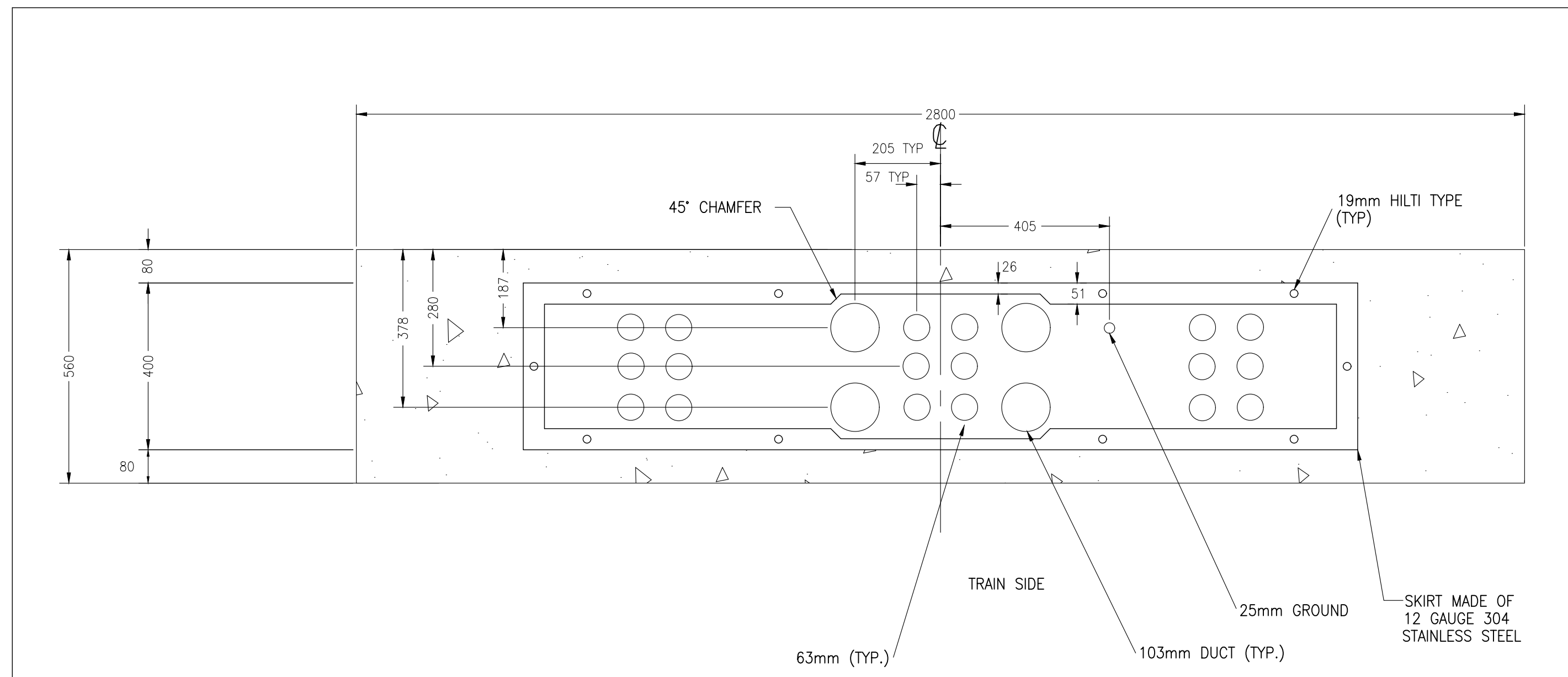
- NOTES :
- 1) REINFORCED CONCRETE MATERIALS, TESTING, CONSTRUCTION AND DESIGN SHALL CONFORM TO CAN 3-A23.1/23.2-94
 - i) CONCRETE STRENGTH AT 28 DAYS = 30 MPa
 - ii) STRUCTURAL SYNTHETIC REINFORCED FIBRE CONCRETE
 - 2) EMBEDDED CONDUIT LOCATION DIMENSIONS SPECIFIC TO PANEL AND BOX REQUIREMENTS



2 PLUG-STORAGE ENCLOSURE DETAIL
13A 1:10



4 CABINET DOOR SWING LAYOUT
13A 1:10



3 CABINET BASE DETAIL LAYOUT FOR CABINET C/W RECEPTACLES & STORAGE CABINET - OPTION 2
13A 1:10

- GENERAL NOTES:
1. CONSULTANTS ARE TO REVIEW ALL WIRE SIZING TO TAKE INTO ACCOUNT; DERATING AND 3% MAXIMUM VOLTAGE DROP FACTORS. WIRE SIZES ARE SUGGESTIONS ONLY!
 2. COMPONENT CROSS REFERENCES SHOWN AS: XXXY WHERE "XX" REPRESENTS FINAL 2 DIGITS OF REFERENCE DRAWING # AND "YY" REPRESENTS QUADRANT LOCATION ON DWG. I.E. 02C1 = WSP-002 QUAD. C1
 3. ALL DIMENSIONS ARE TO BE CONFIRMED AFTER THE WAYSIDE ASSEMBLY CONFIGURATION IS FINALIZED.
 4. SEAL DUCT OPENINGS WITH DUXSEAL AT WAYSIDE CABINET BASE.
 5. LABEL SUPPLIED AND INSTALLED BY CONTRACTOR.
 6. REFER TO ELECTRIFICATION STANDARDS AND SPECIFICATIONS FOR GROUNDING AND BONDING, EMI/EMF WITHSTAND REQUIREMENTS, CABLING REQUIREMENTS.

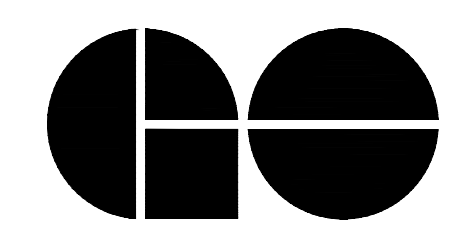
NOTE:
THIS DRAWING IS PROVIDED FOR INSTRUCTIONAL DESIGN PURPOSES ONLY BASED ON METROLINX GO TRANSIT DESIGN GUIDELINES AND REQUIREMENTS. THE CONSULTANT SHALL VERIFY FOR LOCAL CODE COMPLIANCE, EXISTING SITE CONDITIONS AND INTER DISCIPLINARY DRAWING COORDINATION. ALL DIMENSIONS AND SPECIFICATIONS SHOULD BE VERIFIED BY CONSULTANT AND/OR CONTRACTOR BEFORE ACTUAL CONSTRUCTION BEGINS.

GO TRANSIT PROJECT NO. XXXXX

Aug 15/18 12:27pm
AutoCAD drawing: WSP-013A.dwg

REFERENCE DRAWINGS	ISSUE	REVISIONS	DRAWN BY:	DESIGNED BY:
WSP-011 EQUIPMENT ARRANGEMENT 1 OF 3				
WSP-012 EQUIPMENT ARRANGEMENT 2 OF 3			CHECKED BY:	APPROVED BY:
			SCALE: N.T.S	FULL SIZE ONLY
DWG NO.	TITLE	REV. DATE	ISSUED FOR	REV. DATE
		1 FEB.2018	FIRST SUBMISSION	

DRAWN BY:	DESIGNED BY:
CHECKED BY:	APPROVED BY:
SCALE: N.T.S	FULL SIZE ONLY



A Division of Metrolinx

XXXXXX WAYSIDE POWER WAYSIDE CABINET ALTERNATE EQUIPMENT ARRANGEMENT 3 OF 3			
CONTRACT NO. XXXXXXXXXX	DWG. NO. WSP-013A	REV. 0	SHEET XX