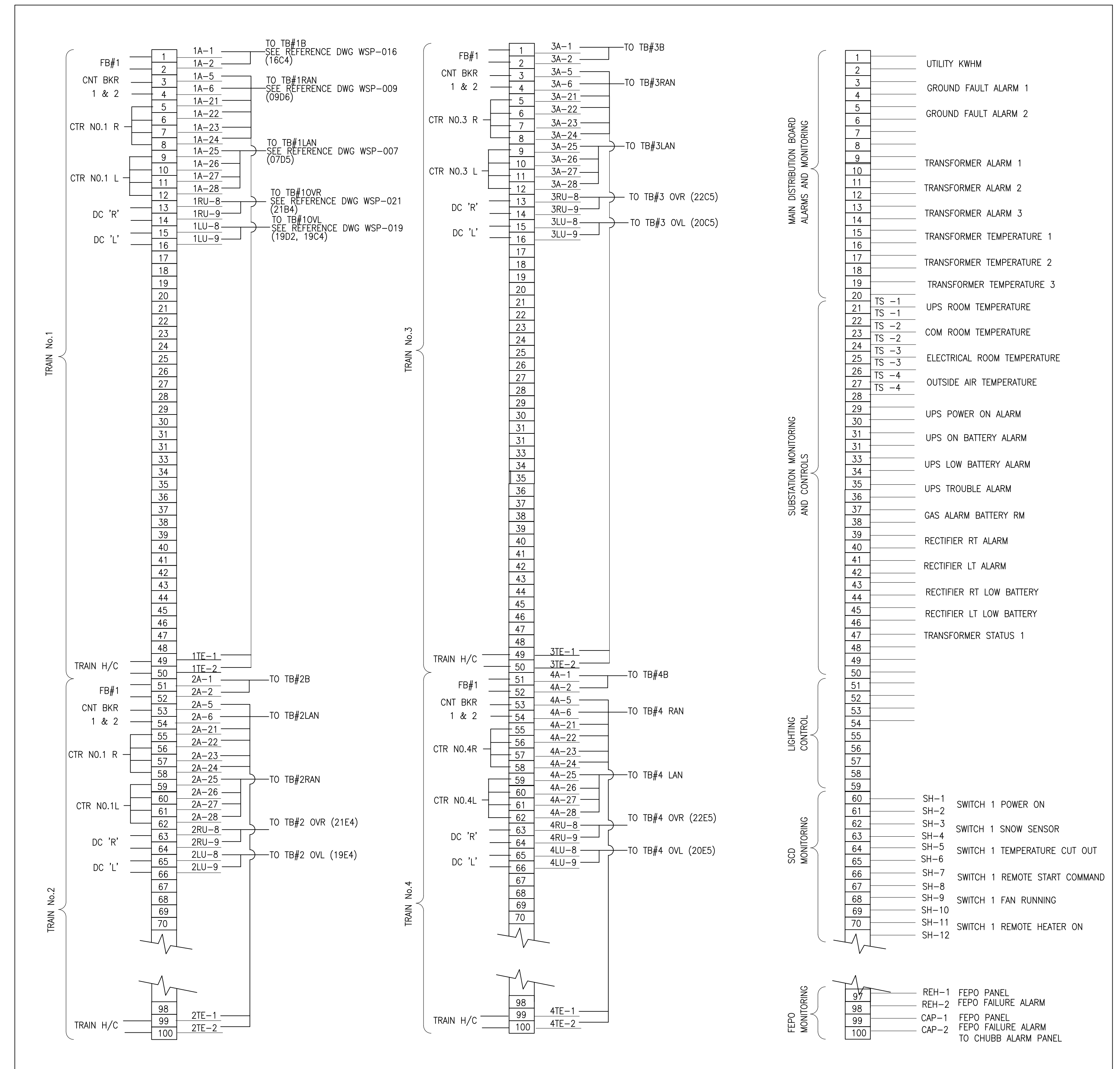


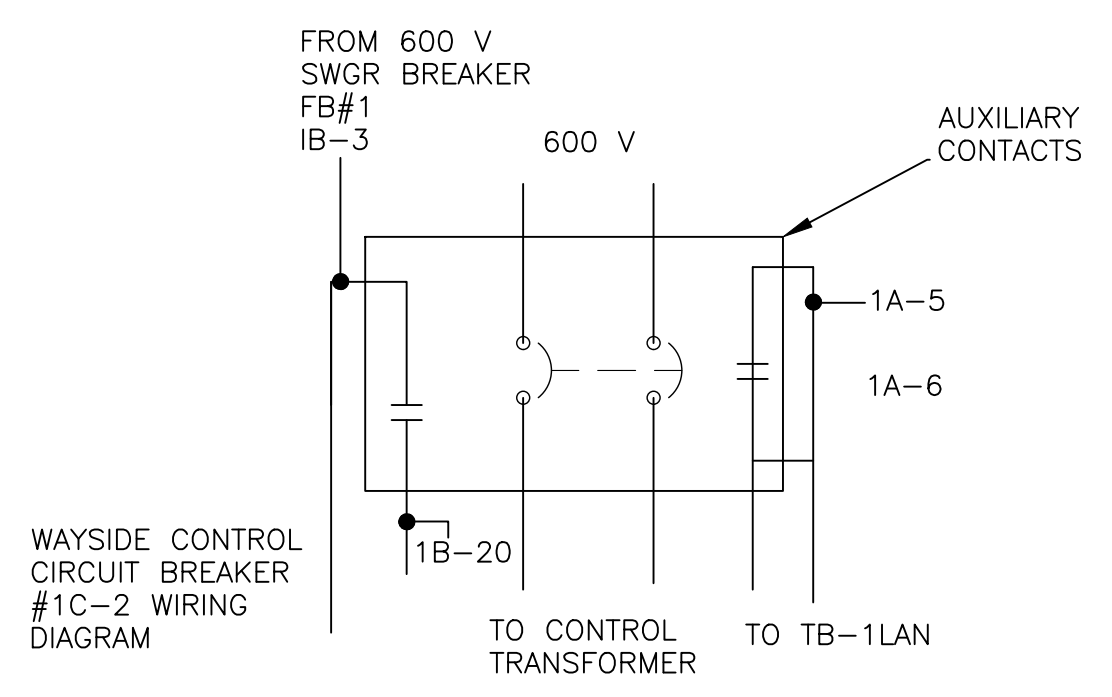
ALL DIMENSIONS SHOWN ARE IN METRES AND/OR MILLIMETRES UNLESS OTHERWISE NOTED.



INPUT DEVICE	DEVICE STATUS	DESCRIPTION
1A-1	1A-2	FEEDER BRKR (FB #1)
1A-5	1A-6	CONTROL BRKR No.1-2
1A-21	1A-22	CONTACTOR No.1R-C1 XA7, XA8
1A-23	1A-24	CONTACTOR No.1R-C3 XA9, XA10
1A-25	1A-26	CONTACTOR No.1L-C2 XA15, XA16
1A-27	1A-28	CONTACTOR No.1L-C4 XA17, XA18
1RU-8	1RU-9	OVER VOLTAGE ALARM DC UNIT 'R'
1LU-8	1LU-9	OVER VOLTAGE ALARM DC UNIT 'L'
1KW-1	1KW-2	KILOWATT METER
1TE-1	1TE-2	TRAIN HEAT/COOL

**ANNUNCIATION POINTS**

SWITCH HEATER SNOW BLOWERS CONTACTS FOR LIGHTING CONTROL HEATING - EXHAUST CONTROL & MONITORING } ADDED TO TELEMETERING CABINET AS REQUIRED



- NOTES:**
- TB#1AN IS TO BE PART OF TELEMETER CABINET AND TO HAVE 20% SPARE CAPACITY FOR TERMINATIONS.
  - TELEMETER CABINET IS TO BE SIZED FOR FOUR TRAINS WITH 20% SPARE CAPACITY.
  - "1" DENOTES TRAIN NUMBER.
  - MODBUS CONTROLLER TO BE PROVIDED BY BUILDING AUTOMATION SYSTEM. MODBUS COMMUNICATION CABLE TO INTERCONNECT ALL KWH METERS ON MAIN DISTRIBUTION BOARD TO THE TELEMETERING CABINET. THE ACTUAL SOFTWARE TABLE FROM THE MAIN DISTRIBUTION BOARD FOR EACH METER.
  - CONSULTANTS ARE TO REVIEW ALL WIRE SIZING TO TAKE INTO ACCOUNT; DERATING AND 3% MAXIMUM VOLTAGE DROP FACTORS. WIRE SIZES ARE SUGGESTIONS ONLY!
  - COMPONENT CROSS REFERENCES SHOWN AS: XXYY WHERE "XX" REPRESENTS FINAL 2 DIGITS OF REFERENCE DRAWING # AND "YY" REPRESENTS QUADRANT LOCATION ON DWG. I.E. 02C1 = WSP-002 QUAD. C1
  - REFER TO ELECTRIFICATION STANDARDS AND SPECIFICATIONS FOR GROUNDING AND BONDING, EMI/EMF WITHSTAND REQUIREMENTS, CABLING REQUIREMENTS.

NOTE: THIS DRAWING IS PROVIDED FOR INSTRUCTIONAL DESIGN PURPOSES ONLY BASED ON METROLINX GO TRANSIT DESIGN GUIDELINES AND REQUIREMENTS. THE CONSULTANT SHALL VERIFY FOR LOCAL CODE COMPLIANCE, EXISTING SITE CONDITIONS AND INTER DISCIPLINARY DRAWING COORDINATION. ALL DIMENSIONS AND SPECIFICATIONS SHOULD BE VERIFIED BY CONSULTANT AND/OR CONTRACTOR BEFORE ACTUAL CONSTRUCTION BEGINS.

GO TRANSIT PROJECT NO. XXXXX

AutoCAD drawing: WSP-023.dwg Aug 15/18 12:28pm

REV.	DATE	ISSUED FOR
5	FEB. 2018	UPDATES AND ADDITIONS
4	DEC 2013	DISCLAIMER NOTE
3	MAR 2013	UPDATES AND ADDITIONS
2	JULY 2012	NOMENCLATURE REVISION
1	SEPT.2010	GENERAL REVISIONS

DRAWN BY:	DESIGNED BY:
CHECKED BY:	APPROVED BY:
SCALE: N.T.S.	FULL SIZE ONLY



**XXXXXX**  
WAYSIDE POWER  
TELEMETERING CABINET  
LAYOUT

CONTRACT NO. XXXXXXXXXX	DWG. NO. WSP-023	REV. 5	SHEET XX
----------------------------	---------------------	-----------	-------------