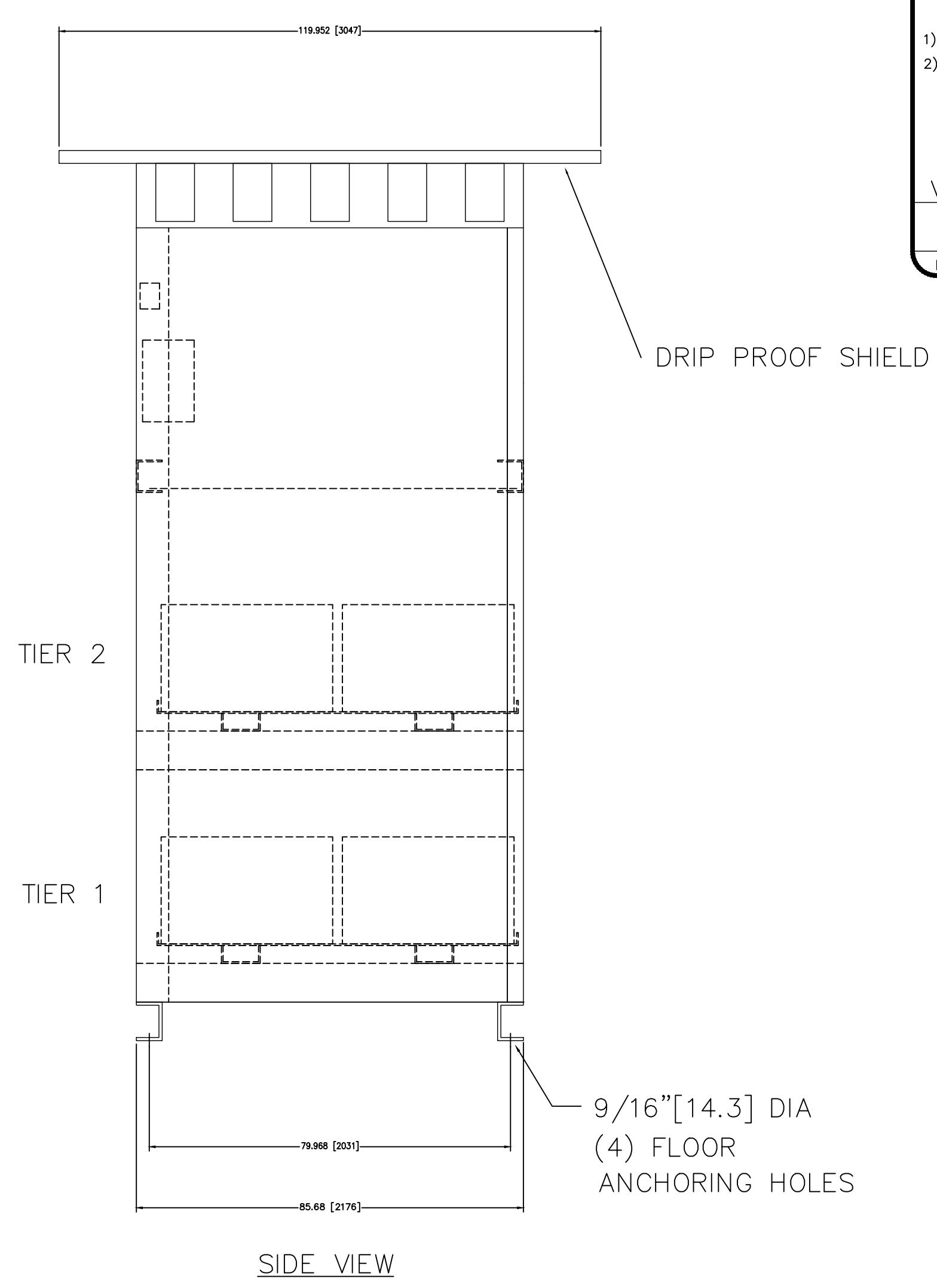
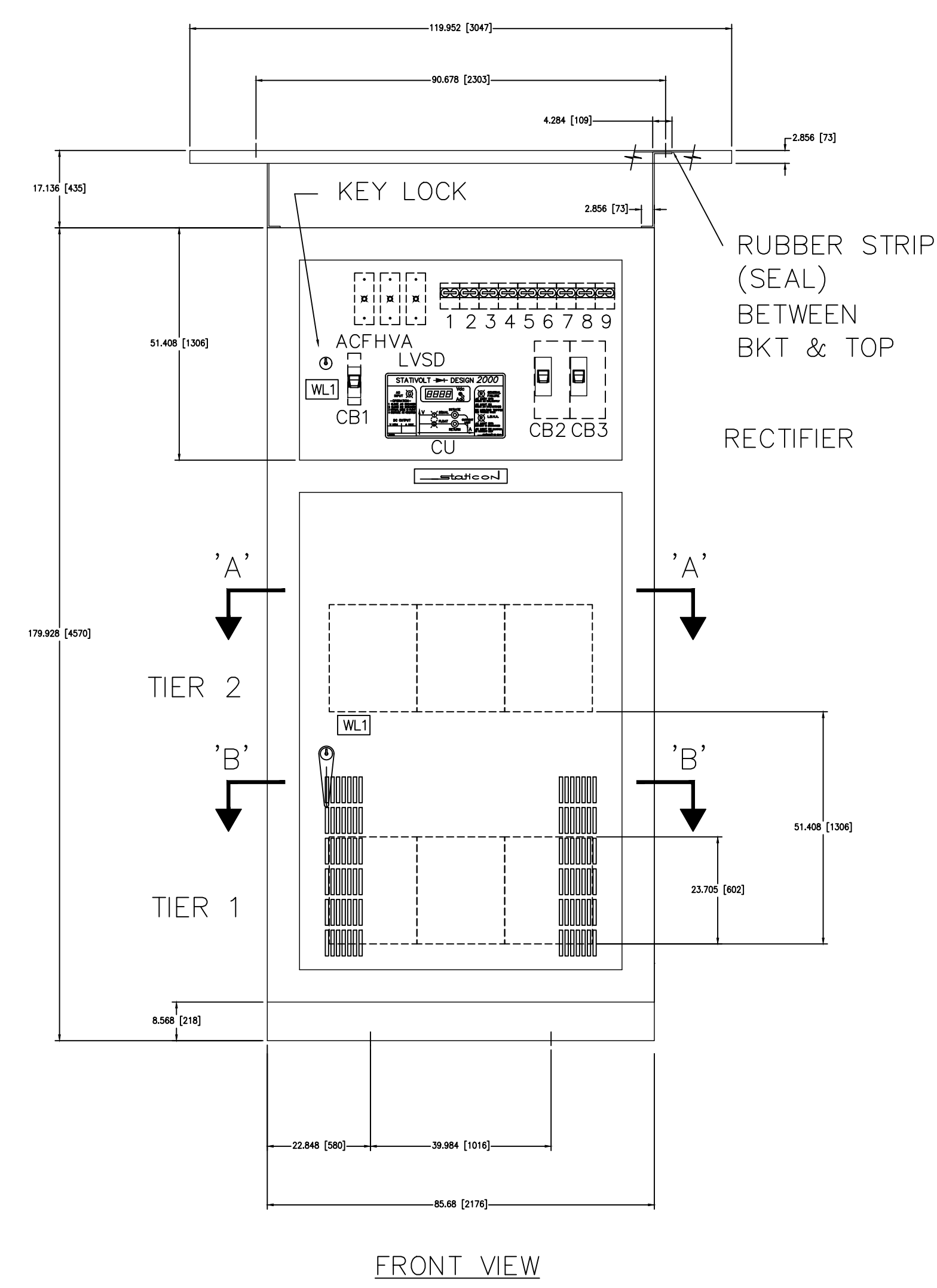
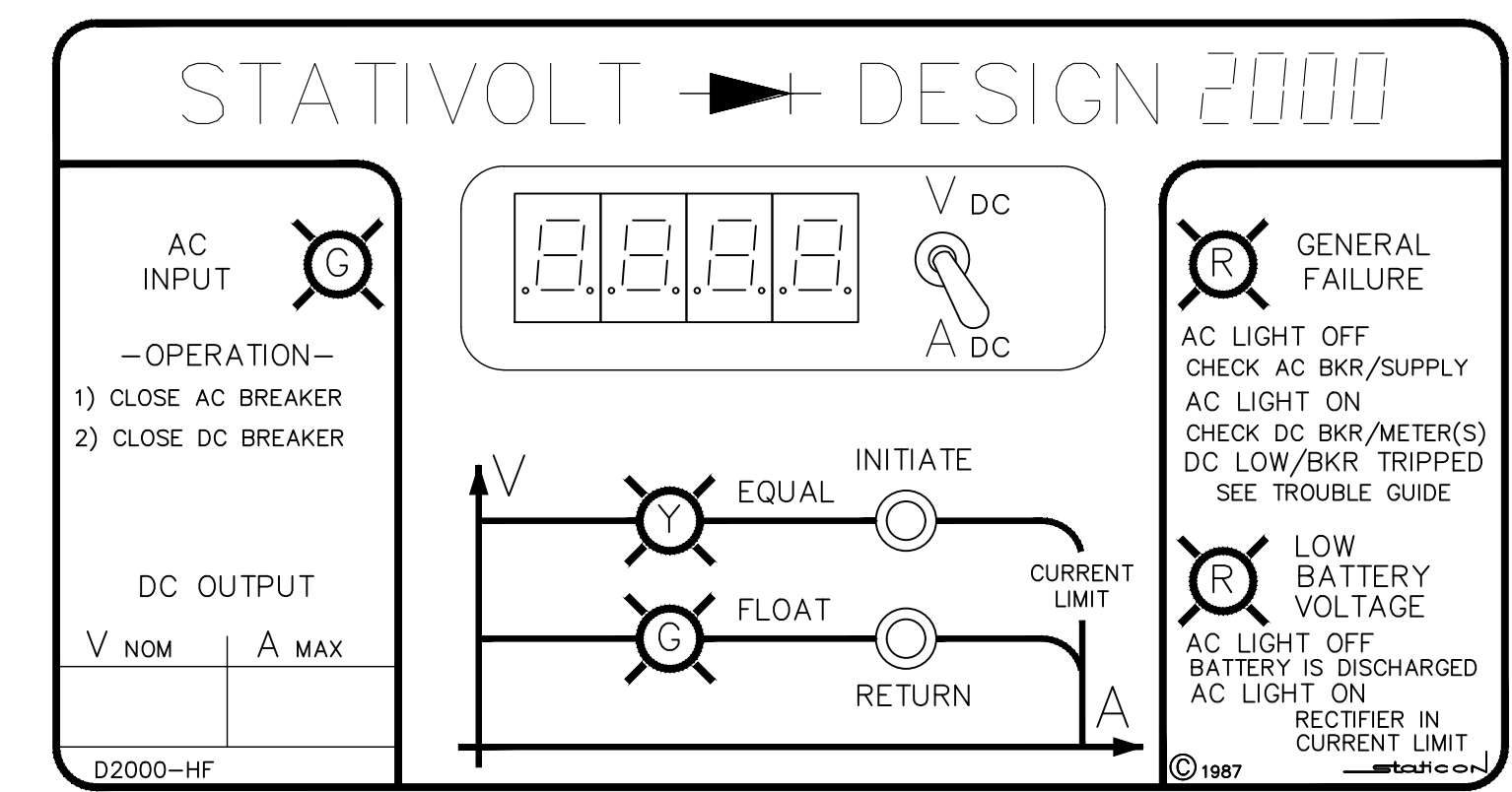
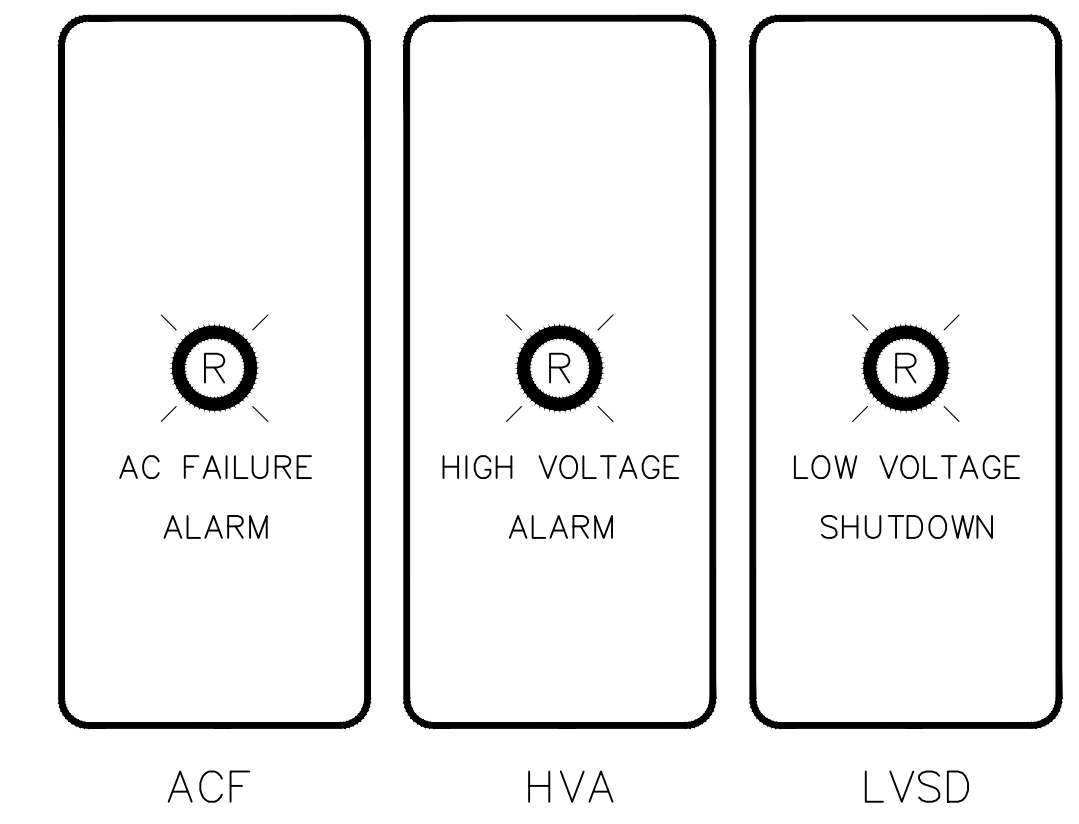
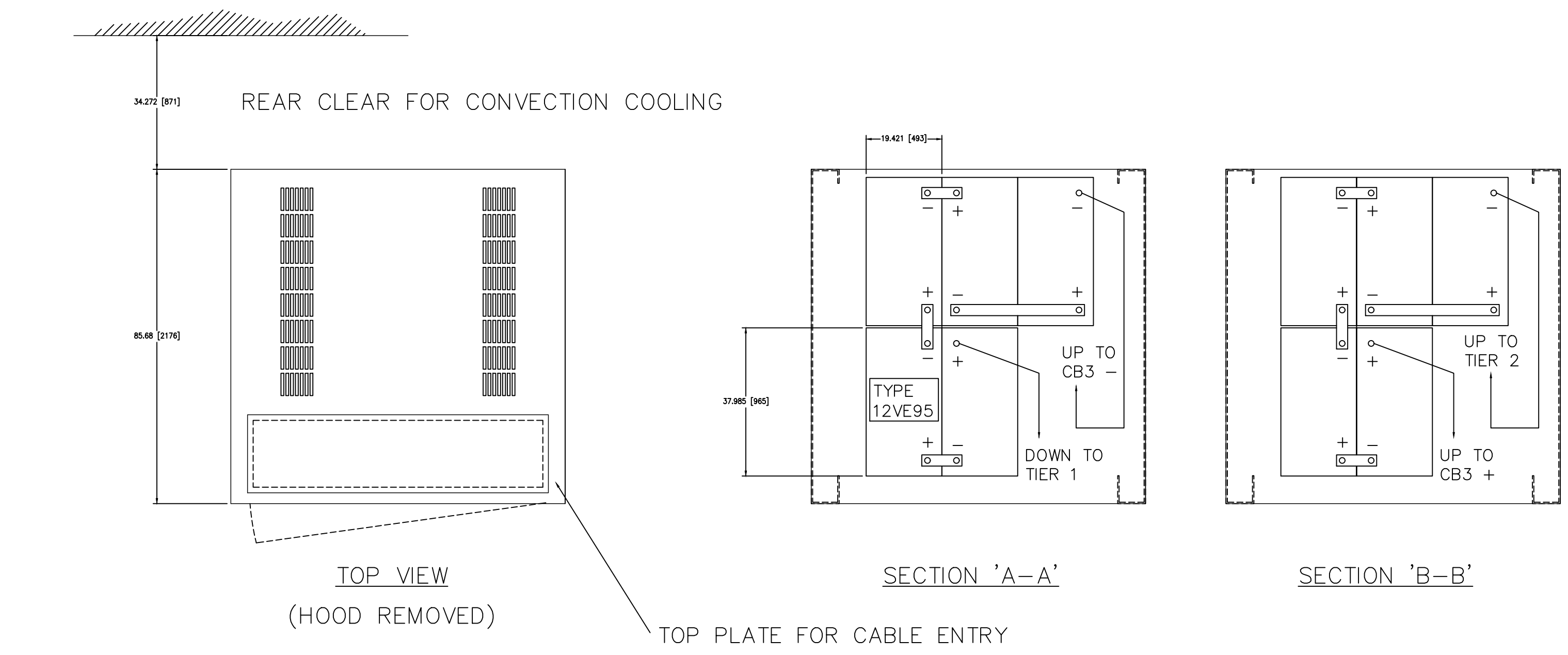


METRIC

ALL DIMENSIONS SHOWN ARE IN METRES AND/OR MILLIMETRES UNLESS OTHERWISE NOTED.



- NOTES
- CABINETS ARE EEMAC 2 – SPRINKLER PROOF
 - FINISH EXTERNAL & INTERNAL ASA 61 GREY.
 - CABLE ENTRY TOP.
 - ACCESS FRONT
 - ALL DIMENSIONS IN INCHES [MM]
 - APPROX. WEIGHT: 520kg

staticON TORONTO, CANADA LTD
 INSTALLATION DRAWING
 BATTERY CABINET &
 STATION RECTIFIER TYPE
 CT120B15A76160FENOLLsHDBK-GO
 NO. L-6454A REV. 0

NOTE:
 THIS DRAWING IS PROVIDED FOR INSTRUCTIONAL DESIGN PURPOSES ONLY BASED ON METROLINX GO TRANSIT DESIGN GUIDELINES AND REQUIREMENTS. THE CONSULTANT SHALL VERIFY FOR LOCAL CODE COMPLIANCE, EXISTING SITE CONDITIONS AND INTER DISCIPLINARY DRAWING COORDINATION. ALL DIMENSIONS AND SPECIFICATIONS SHOULD BE VERIFIED BY CONSULTANT AND/OR CONTRACTOR BEFORE ACTUAL CONSTRUCTION BEGINS.

- GENERAL NOTES:
- CONSULTANTS ARE TO REVIEW ALL WIRE SIZING TO TAKE INTO ACCOUNT; DERATING AND 3% MAXIMUM VOLTAGE DROP FACTORS. WIRE SIZES ARE SUGGESTIONS ONLY!
 - COMPONENT CROSS REFERENCES SHOWN AS: XXXY WHERE "XX" REP FINAL 2 DIGITS OF DWG # AND "YY" REP QUADRANT LOCATION ON DWG. IE. 02C1 = EDD-W1-002 QUAD. C1
 - REFER TO ELECTRIFICATION STANDARDS AND SPECIFICATIONS FOR GROUNDING AND BONDING, EMI/EMF WITHSTAND REQUIREMENTS, CABLING REQUIREMENTS.

GO TRANSIT PROJECT NO. XXXXX

REV.	DATE	ISSUED FOR	REV.	DATE	ISSUED FOR
5	FEB. 2018	UPDATES AND ADDITIONS	1	SEPT.2010	GENERAL REVISIONS
4	DEC 2013	DISCLAIMER NOTE			
3	MAR 2013	UPDATES AND ADDITIONS			
2	JULY 2012	NOMENCLATURE REVISION			

DRAWN BY:	DESIGNED BY:
CHECKED BY:	APPROVED BY:
SCALE: N.T.S.	FULL SIZE ONLY



XXXXXX WAYSIDE POWER 120V DC SUPPLY GENERAL ARRANGEMENT			
CONTRACT NO. XXXXXXXXXXXX	DWG. NO. WSP-028	REV. 5	SHEET XX

Aug 15/18 12:28pm
 AutoCAD drawing: WSP-028.dwg