

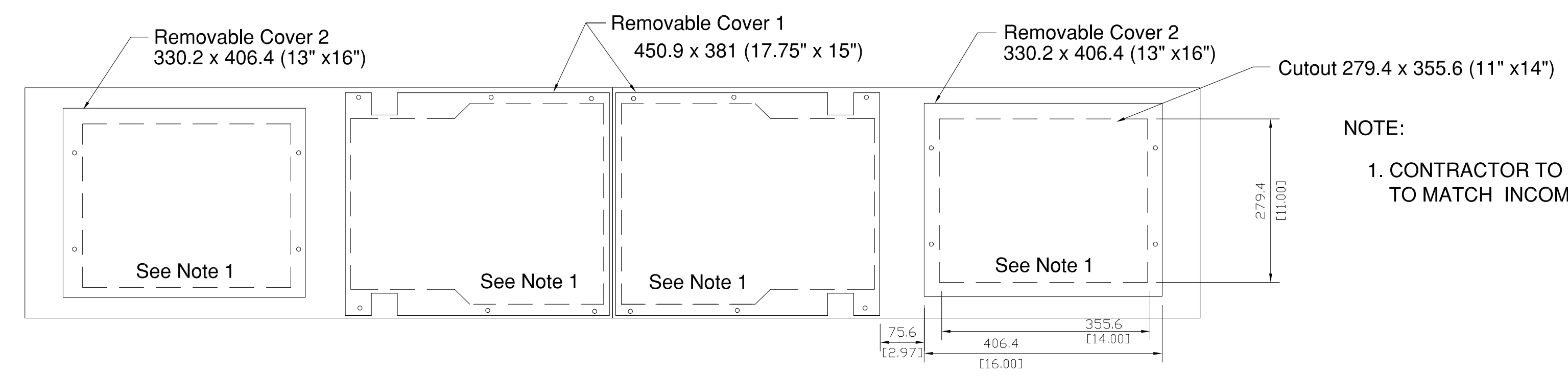
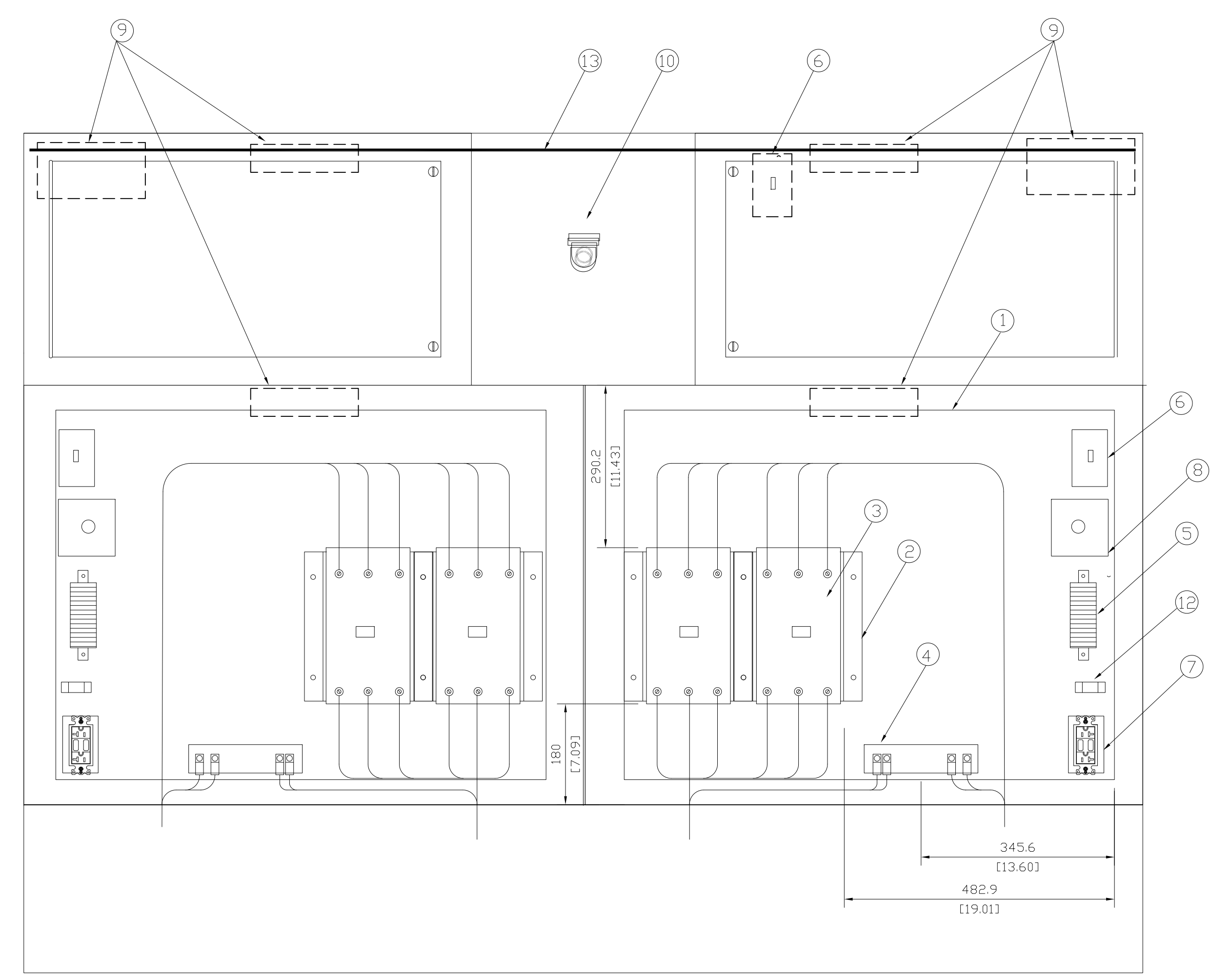
NOTE:  
THIS DRAWING IS PROVIDED FOR INSTRUCTIONAL DESIGN PURPOSES ONLY BASED ON METROLINK GO TRANSIT DESIGN GUIDELINES AND REQUIREMENTS. THE CONSULTANT SHALL VERIFY FOR LOCAL CODE COMPLIANCE, EXISTING SITE CONDITIONS AND INTER DISCIPLINARY DRAWING COORDINATION. ALL DIMENSIONS AND SPECIFICATIONS SHOULD BE VERIFIED BY CONSULTANT AND/OR CONTRACTOR BEFORE ACTUAL CONSTRUCTION BEGINS.

ALL DIMENSIONS SHOWN ARE IN METRES AND/OR MILLIMETRES UNLESS OTHERWISE NOTED.

- ① BACK PLATE
- ② CIRCUIT BREAKER BRACKETS
- ③ CIRCUIT BREAKER
- ④ COPPER GROUND BAR
- ⑤ TERMINAL BLOCKS
- ⑥ SWITCH
- ⑦ RECEPTACLE
- ⑧ PUSH BUTTON BOX
- ⑨ LED LIGHTS. PHOTOCELL CONTROLLED.
- ⑩ FIREMAN EMERGENCY STOP
- ⑪ NOT USED
- ⑫ FUSE
- ⑬ LED STRING OF LIGHT ON THE FRONT OVER DOORS. PHOTOCELL CONTROLLED.

GENERAL NOTE:

1. REFER TO ELECTRIFICATION STANDARDS AND SPECIFICATIONS FOR GROUNDING AND BONDING, EMI/EMF WITHSTAND REQUIREMENTS, CABLING REQUIREMENTS.



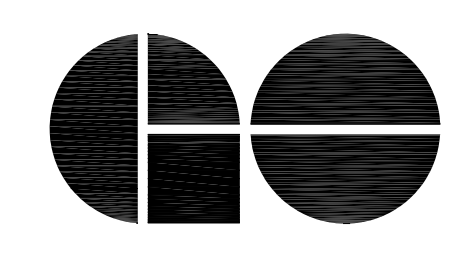
NOTE:

1. CONTRACTOR TO CUT HOLES IN REMOVABLE PLATES TO MATCH INCOMING CONDUITS

MATERIAL: SS 12 GA, #4 304  
DIMENSIONS IN MILLIMETERS [INCHES]

WAYSIDE CABINET OPTION 2

GO TRANSIT PROJECT NO. XXXXX

REFERENCE DRAWINGS		ISSUE		REVISIONS		DRAWN BY:	DESIGNED BY:	 <p>A Division of Metrolinx</p>	XXXXXX WAYSIDE POWER WAYSIDE CABINET LAYOUT (ALTERNATE)		CONTRACT NO. XXXXXXXXXX	DWG. NO. WSP-036A	REV. 1	SHEET XX	
						CHECKED BY:	APPROVED BY:								
						SCALE: N.T.S. FULL SIZE ONLY									
DWG NO.	TITLE	REV.	DATE	ISSUED FOR	REV.	DATE	1	DEC. 2019	Dimension Spacing						