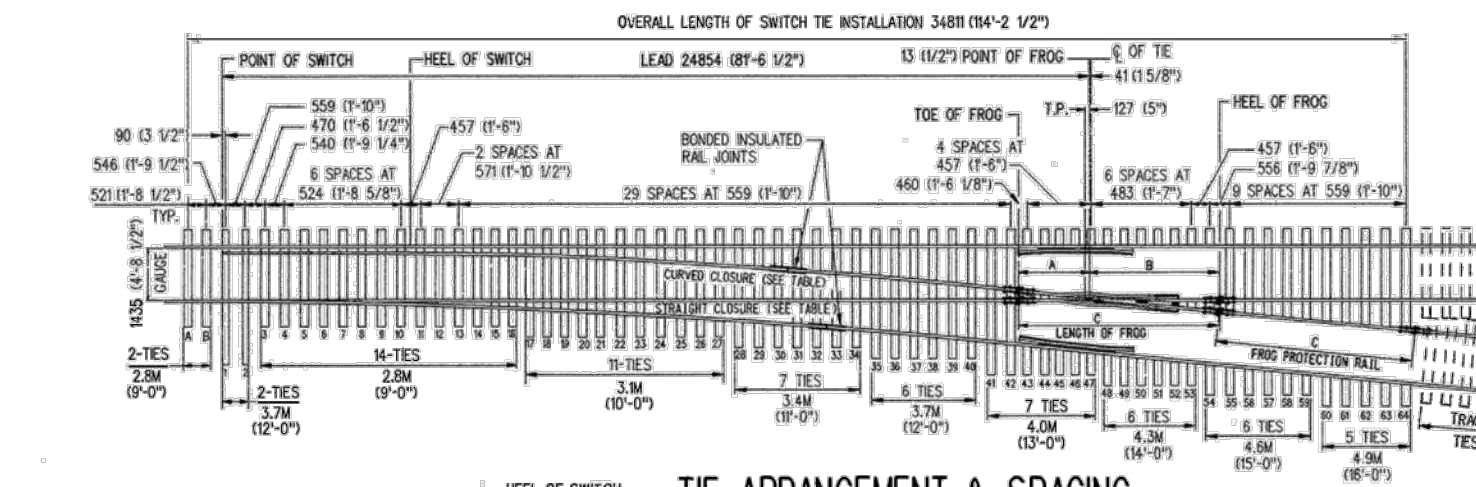
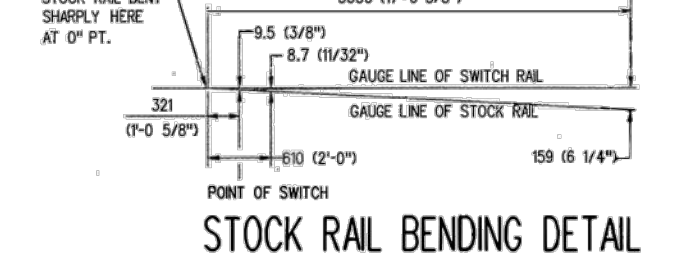


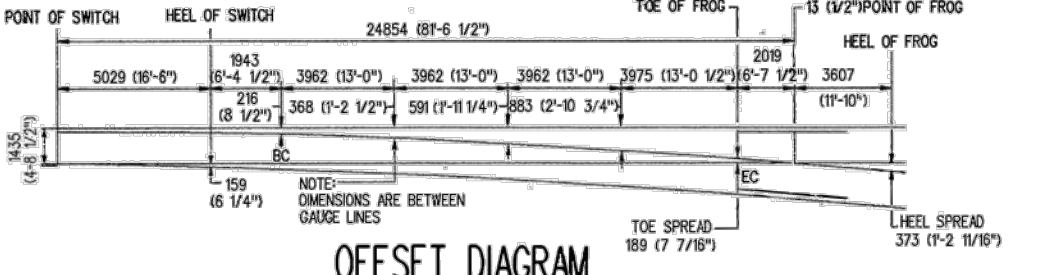
**TIE ARRANGEMENT & SPACING
HAND OPERATED & SPRING SWITCHES**



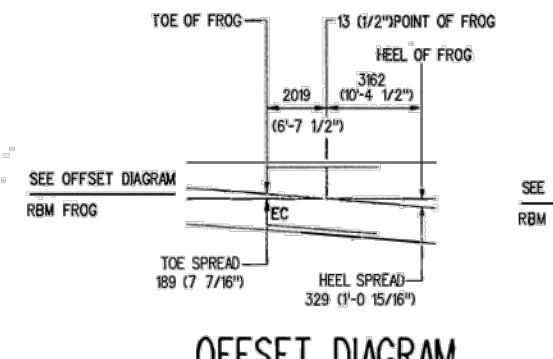
**TIE ARRANGEMENT & SPACING
POWER OPERATED SWITCH
RBM & SPRING FROG**



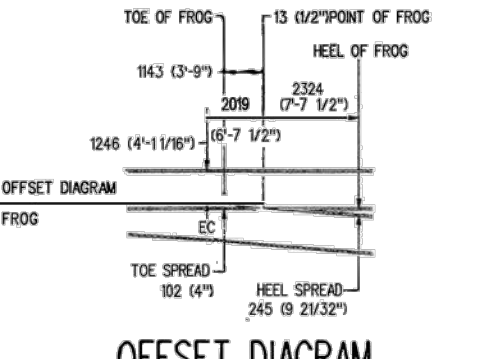
STOCK RAIL BENDING DETAIL



**OFFSET DIAGRAM
RBM FROG**

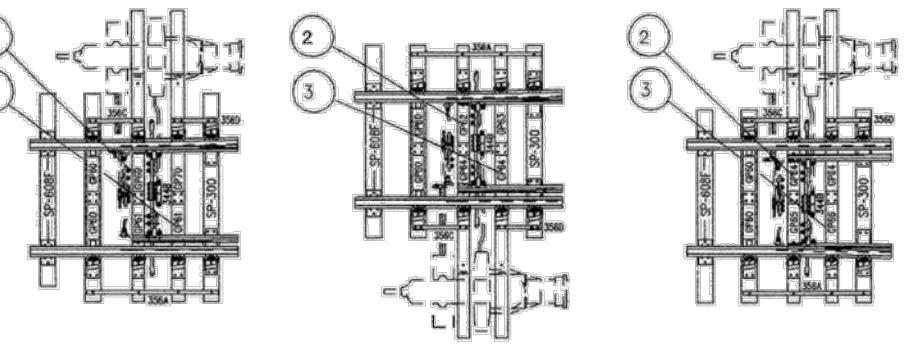


**OFFSET DIAGRAM
SPRING FROG**

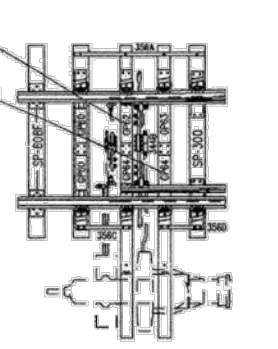


**OFFSET DIAGRAM
SGM FROG**

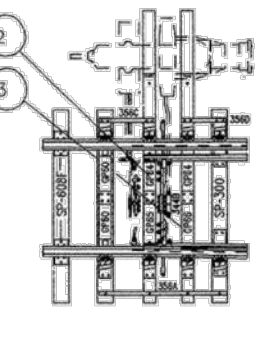
FROGS	A	B	C
RBM	2019 (6'-7 1/2")	3607 (11'-10")	5626 (18'-5 1/2")
SGM	1143 (3'-9")	2324 (7'-7 1/2")	3467 (11'-4 1/2")
SPRING	2019 (6'-7 1/2")	3162 (10'-4 1/2")	5181 (17'-0")



**DRAWING NO. GTS-0010 D, H
& J LEFT HAND TURNOUT
MACHINE MOUNTED ON LEFT**



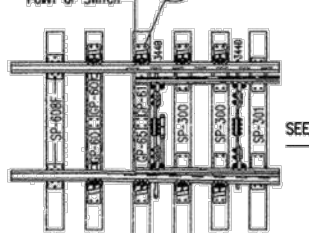
**DRAWING NO. GTS-0010 C, G
& K RIGHT HAND TURNOUT
MACHINE MOUNTED ON RIGHT**



**DRAWING NO. GTS-0010 B, F
& I RIGHT HAND TURNOUT
MACHINE MOUNTED ON LEFT**

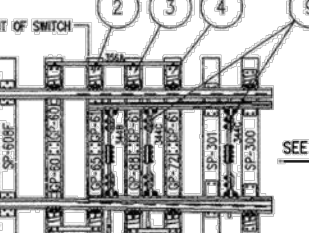
HAND OPERATED SWITCH

**DRAWING NO GTS-0010 M, O & P
RIGHT HAND TURNOUT (SHOWN)**



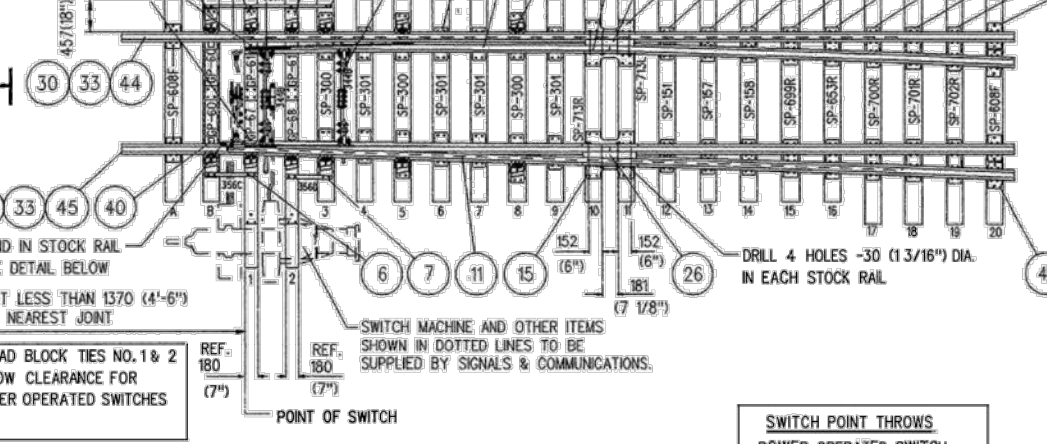
SPRING SWITCH

**DRAWING NO GTS-0010 S, U
& W RIGHT HAND TURNOUT (SHOWN)**



POWER OPERATED SWITCH

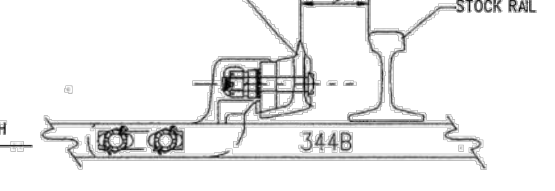
**DRAWING NOGTS-010 A, E & I
RIGHT HAND TURNOUT
MACHINE MOUNTED ON RIGHT**



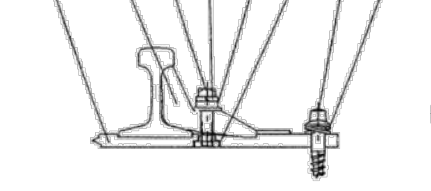
THESE HOLES TO BE USED ONLY FOR SPRING POINTS IN CLOSED POSITION

INSTALL ADDED HEAD BLOCK TIES NO.1 & 2 ON SIDES TO ALLOW CLEARANCE FOR SWITCH ROD.(POWER OPERATED SWITCHES ONLY)

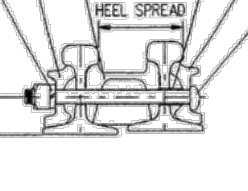
**"MJS" CLIP ASSEMBLY
SPRING SWITCH (SHOWN)**



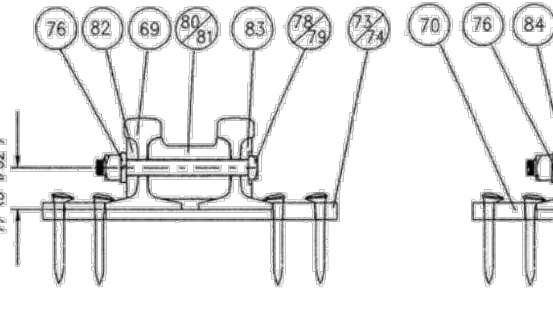
**ADJUSTABLE
RAIL BRACE ASSEMBLY**



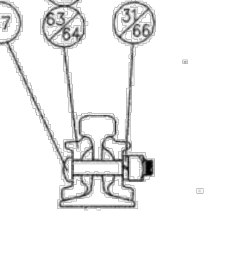
**HEEL BLOCK
ASSEMBLY**



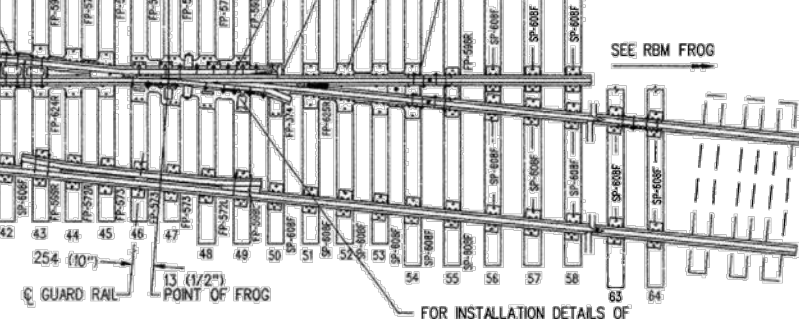
GUARD RAIL ASSEMBLIES



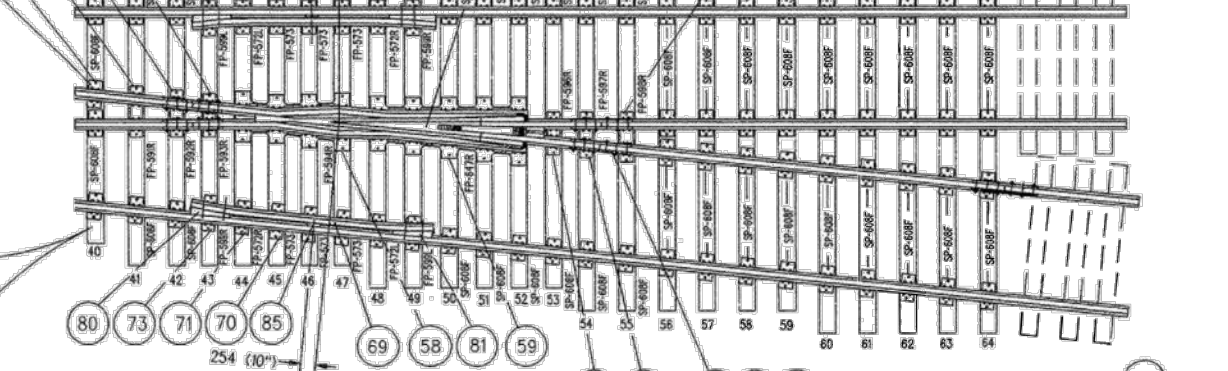
**SPLICE BAR
ASSEMBLY**



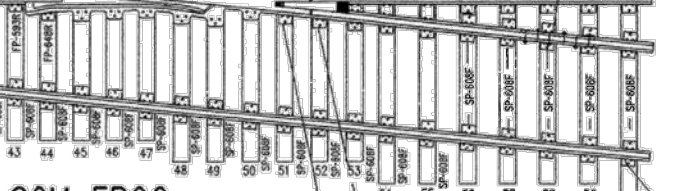
SPRING FROG



RBM FROG



SGM FROG



TURNOUT DATA

RBM & SPRING FROGS		SGM FROG	
FROG NO.	10	FROG NO.	10
LENGTH OF SWITCH PT.	5029 (16'-6")	LENGTH OF SWITCH PT.	5029 (16'-6")
HEEL SPREAD	159 (6 1/4")	HEEL SPREAD	159 (6 1/4")
LEAD	24854 (81'-6 1/2")	LEAD	24854 (81'-6 1/2")
P.S. TO H.F. RBM FROG	28461 (93'-4 1/2")	P.S. TO H.F.	27178 (89'-2")
P.S. TO H.F. SPRING FROG	28016 (91'-11")		
17805 (58'-5") STRAIGHT CLOSURE LENGTH MADE UP BY A 17805 (58'-5") RAIL OR: A 11887 (39') AND 5918 (19'-5") RAIL A 10973 (36') AND 6832 (22'-5") RAIL A 10058 (33') AND 7747 (25'-5") RAIL A 9144 (30') AND 8661 (28'-5") RAIL		18682 (61'-3 1/2") STRAIGHT CLOSURE LENGTH MADE UP BY A 18682 (61'-3 1/2") RAIL OR: A 11887 (39') AND 6795 (19'-5") RAIL A 10973 (36') AND 7709 (25'-3 1/2") RAIL A 10058 (33') AND 8624 (28'-3 1/2") RAIL	
17856 (58'-7") CURVED CLOSURE LENGTH MADE UP BY A 17856 (58'-7") RAIL OR: A 11887 (39') AND 5969 (19'-7") RAIL A 10973 (36') AND 6883 (22'-7") RAIL A 10058 (33') AND 7798 (25'-7") RAIL A 9144 (30') AND 8716 (28'-7") RAIL		18732 (61'-5 1/2") CURVED CLOSURE LENGTH MADE UP BY A 18732 (61'-5 1/2") RAIL OR: A 11887 (39') AND 6545 (22'-5 1/2") RAIL A 10973 (36') AND 7768 (25'-5 1/2") RAIL A 10058 (33') AND 8674 (28'-5 1/2") RAIL	

NOTES:

- TURNOUT TO BE INSTALLED AND MAINTAINED IN ACCORDANCE WITH THE LATEST ISSUE OF THE RM.
- WHEN REFERRING TO TURNOUTS, DRAWING NUMBER MUST BE STATED AS "A" TO "X" TO INDICATE:
A- RIGHT HAND TURNOUT- POWER OPERATED SWITCH- MACHINE ON RIGHT- RBM FROG
B- RIGHT HAND TURNOUT- POWER OPERATED SWITCH- MACHINE ON LEFT- RBM FROG
C- LEFT HAND TURNOUT- POWER OPERATED SWITCH- MACHINE ON RIGHT- RBM FROG
D- LEFT HAND TURNOUT- POWER OPERATED SWITCH- MACHINE ON LEFT- RBM FROG
E- RIGHT HAND TURNOUT- POWER OPERATED SWITCH- MACHINE ON RIGHT- SGM FROG
F- RIGHT HAND TURNOUT- POWER OPERATED SWITCH- MACHINE ON LEFT- SGM FROG
G- LEFT HAND TURNOUT- POWER OPERATED SWITCH- MACHINE ON RIGHT- SGM FROG
H- LEFT HAND TURNOUT- POWER OPERATED SWITCH- MACHINE ON LEFT- SGM FROG
I- RIGHT HAND TURNOUT- POWER OPERATED SWITCH- MACHINE ON RIGHT- SPRING FROG
J- RIGHT HAND TURNOUT- POWER OPERATED SWITCH- MACHINE ON LEFT- SPRING FROG
K- LEFT HAND TURNOUT- POWER OPERATED SWITCH- MACHINE ON RIGHT- SPRING FROG
L- LEFT HAND TURNOUT- POWER OPERATED SWITCH- MACHINE ON LEFT- SPRING FROG
M- RIGHT HAND TURNOUT- HAND OPERATED SWITCH- RBM FROG
N- LEFT HAND TURNOUT- HAND OPERATED SWITCH- RBM FROG
O- RIGHT HAND TURNOUT- HAND OPERATED SWITCH- SGM FROG
P- LEFT HAND TURNOUT- HAND OPERATED SWITCH- SGM FROG
Q- RIGHT HAND TURNOUT- HAND OPERATED SWITCH- SPRING FROG
R- LEFT HAND TURNOUT- HAND OPERATED SWITCH- SPRING FROG
S- RIGHT HAND TURNOUT- SPRING SWITCH- RBM FROG
T- LEFT HAND TURNOUT- SPRING SWITCH- RBM FROG
U- RIGHT HAND TURNOUT- SPRING SWITCH- SGM FROG
V- LEFT HAND TURNOUT- SPRING SWITCH- SGM FROG
W- RIGHT HAND TURNOUT- SPRING SWITCH- SPRING FROG
X- LEFT HAND TURNOUT- SPRING SWITCH- SPRING FROG
- FOR OTHER TURNOUT COMBINATIONS SEE INDEX GTS-0000 SHEETS 1 TO 3.
- TURNOUT GEOMETRY, FOR TABLES OF DIMENSIONS AND OFFSETS SEE GTS-0002 NO.10 TURNOUTS.
- SWITCH STANDS ON HAND OPERATED & SPRING SWITCH TURNOUTS ARE NORMALLY LOCATED ON THE OUTWARD SIDE. FROG ASSEMBLED TURNOUTS SHALL FOLLOW THIS ARRANGEMENT UNLESS OTHERWISE SPECIFIED WHEN ORDERING.

METRIC CONVERSION: 1 inch=25.4mm, 1 foot=304.8mm

1	18/07/27	ADDED IMPERIAL TO METRIC CONVERSION NOTE
No.	Date	Revision
		By Approved

Standard
**NO. 10 TURNOUT-115LB. RAIL
 16"6" SAMSON POINT SWITCH
 UNIFORM RISER DESIGN
 WOOD TIES**

Drawn MG Checked GS Approved VP Engineering & Asset Management



Date DEC 15, 2017 Plan Number GTS-0010 Rev 1

