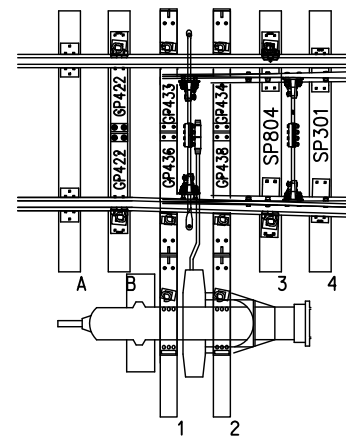
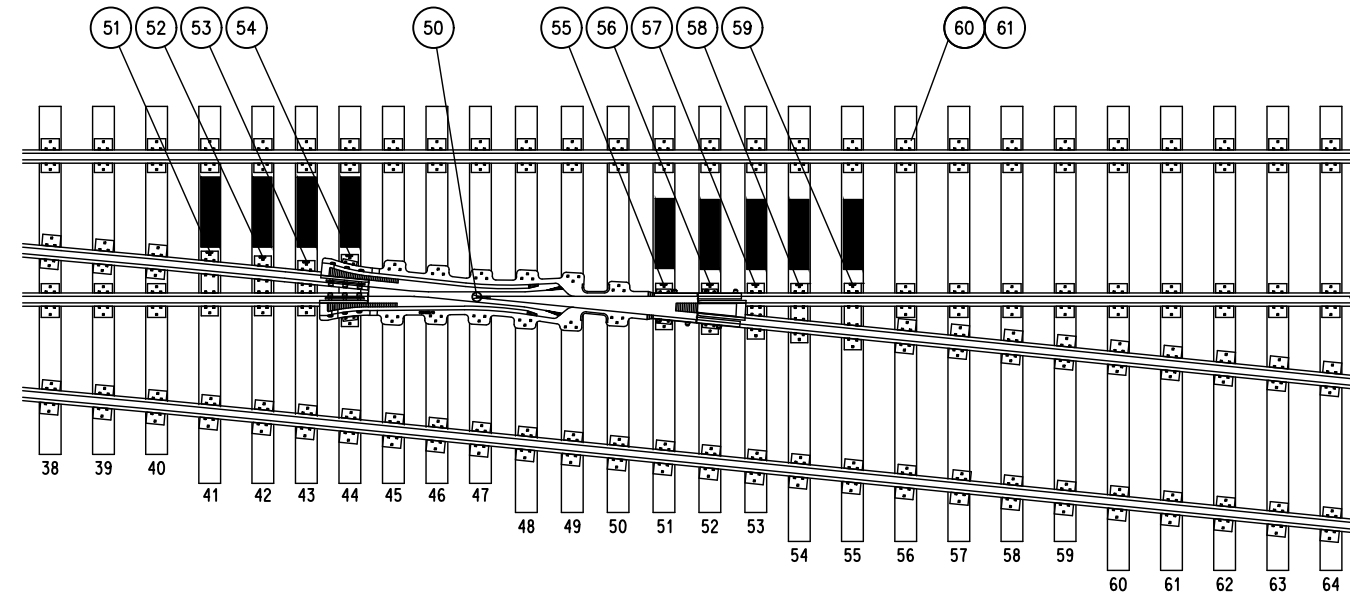
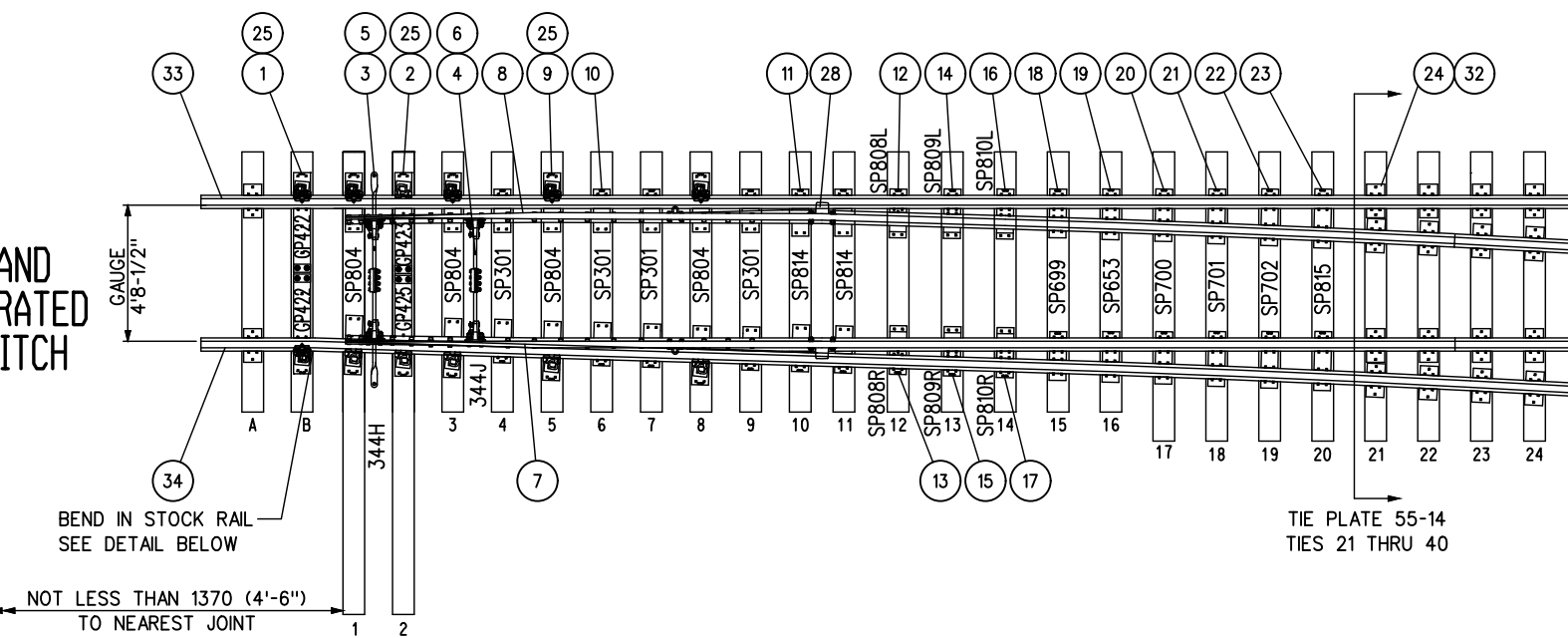


TO CONVERT TO POWER OPERATION
REFER TO BILL OF MATERIALS



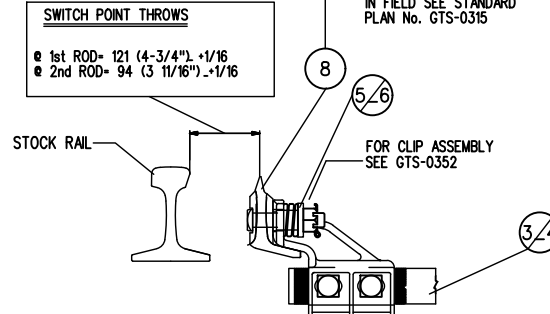
HAND
OPERATED
SWITCH



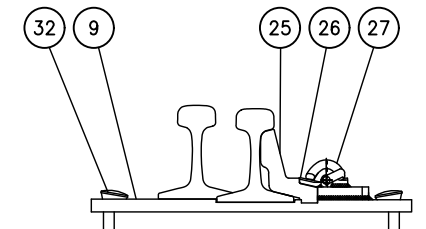
SGM FROG

TURNOUT DATA
SGM FROG

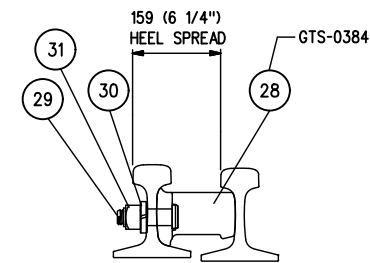
FROG NO.	10
LENGTH OF SWITCH PT.	11709 (38'-5")
HEEL SPREAD	159 (6 1/4")
LEAD	24854 (81'-6 1/2")
P.S. TO H.F.	26683 (87'-6 1/2")
12002 (39'-4 1/2")	STRAIGHT CLOSURE LENGTH
12060 (39'-6 13/16")	CURVED CLOSURE LENGTH



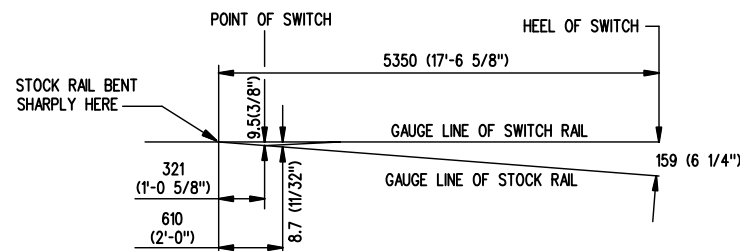
ROCKER CLIP ASSEMBLY



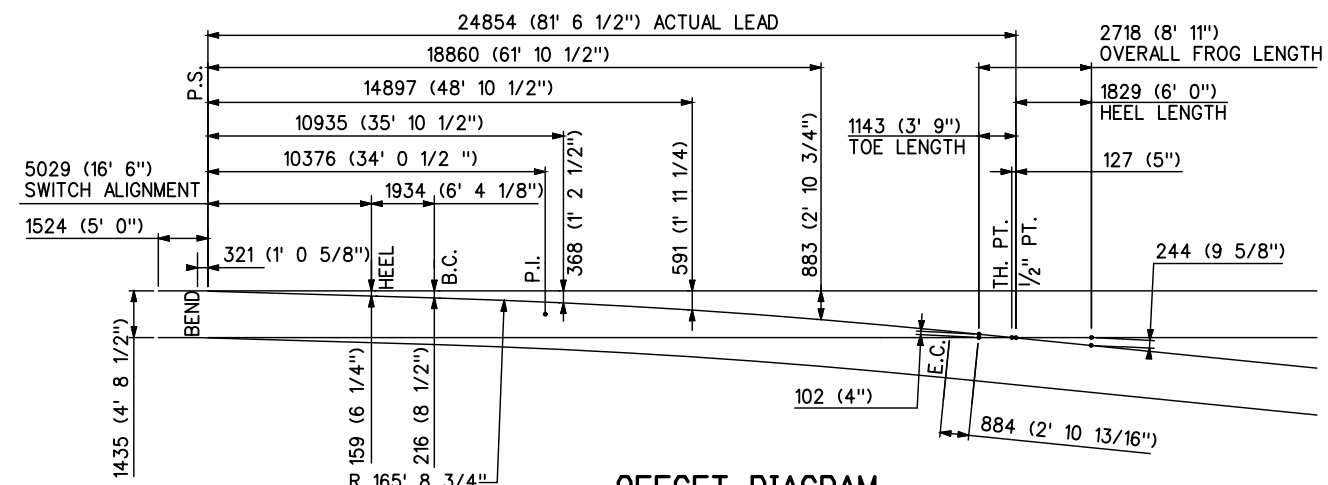
ADJUSTABLE
RAIL BRACE ASSEMBLY



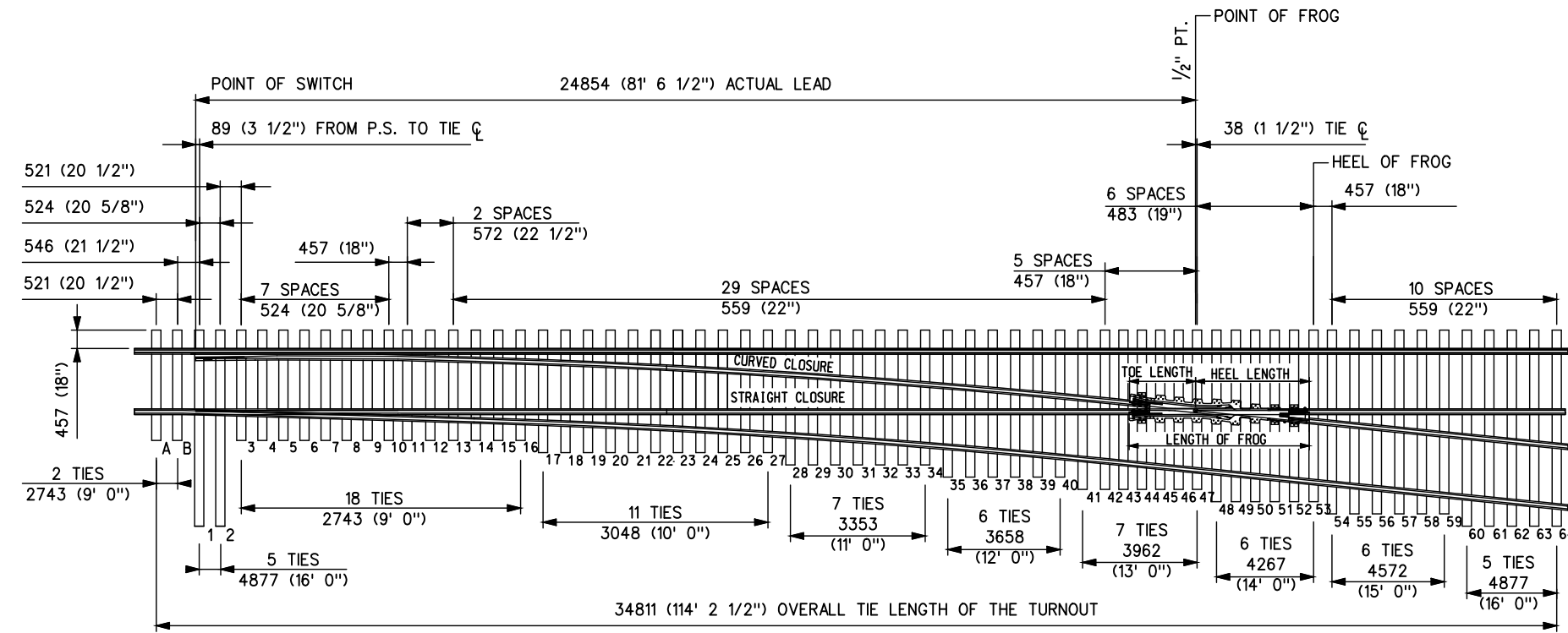
HEEL BLOCK
ASSEMBLY



STOCK RAIL BENDING DETAIL



OFFSET DIAGRAM



TIE ARRANGEMENT & SPACING

NOTES:

- TURNOUT TO BE INSTALLED AND MAINTAINED IN ACCORDANCE WITH THE LATEST ISSUE OF THE RM.
- WHEN REFERRING TO TURNOUTS, DRAWING NUMBER MUST BE STATED AS "L" OR "R" TO INDICATE:
R-RIGHT HAND TURNOUT-HAND OPERATED SWITCH-SGM FROG
L-LEFT HAND TURNOUT-HAND OPERATED SWITCH-SGM FROG
- FOR OTHER STANDARD TURNOUT COMBINATIONS SEE INDEX GTS-0000 SHEETS 1 TO 3.
- TURNOUT GEOMETRY, FOR TABLES OF DIMENSIONS AND OFFSETS SEE GTS-0002 NO. 10 TURNOUTS.
- SWITCH STANDS ON HAND OPERATED TURNOUTS ARE NORMALLY LOCATED ON THE DIVERGING SIDE. PRE-ASSEMBLED TURNOUTS SHALL FOLLOW THIS ARRANGEMENT UNLESS OTHERWISE SPECIFIED WHEN ORDERING.

METRIC CONVERSION: 1 inch=25.4mm, 1 foot=304.8mm

No.	Date	Revision	By	Approved
1	18/07/27	ADDED IMPERIAL TO METRIC CONVERSION NOTE		
Standard NO. 10 TURNOUT-115 LB. RAIL LIGHT DUTY 16'6" GEOMETRY 38'5" POINT LENGTH SAWSON SWITCH UNIFORM RISER DESIGN WOOD TIES				
Drawn	NG	Checked	DGRL	Approved



METROLINX

Date SEPT 15/2017 Plan Number GTS-0016 Rev 1

REFERENCE: TS-0016_R1

Sheet 1 OF 1

BILL OF MATERIALS FOR GTS-0016

ITEM	DESCRIPTION	MARK NUMBER	STANDARD DRAWING	QUANTITY	
				L	R
SWITCH PACK					
1	1st. GAUGE PLATE ASSEMBLY	GP422/GP422	GTS-0521	1	1
2	GAUGE PLATE ASSEMBLY - TIE 2	GP423/GP424	GTS-0521	1	-
	GAUGE PLATE ASSEMBLY - TIE 2	GP425/GP423	GTS-0521	-	1
3	SWITCH ROD	344H	GTS-0344H	1	1
4	SWITCH ROD	344J	GTS-0344J	1	1
5	ROCKER CLIP ASSEMBLY	352P	GTS-0352P	1	1
6	ROCKER CLIP ASSEMBLY	352P	GTS-0352Q	1	1
7	RIGHT CURVED SAMSON POINT RAIL - 38'-5"		GTS-0315	1	-
	RIGHT STRAIGHT SAMSON POINT RAIL - 38'-5"		GTS-0315	-	1
8	LEFT STRAIGHT SAMSON POINT RAIL - 38'-5"		GTS-0315	1	-
	LEFT CURVED SAMSON POINT RAIL - 38'-5"		GTS-0315	-	1
9	SWITCH PLATE - BRACE PLATE	SP804	GTS-0508	8	8
10	SWITCH PLATE	SP301	GTS-0509	8	8
11	SWITCH PLATE (UNIVERSAL)	SP814	GTS-0509	4	4
12	SWITCH PLATE (LEFT HAND)	SP808L	GTS-0507	1	1
13	SWITCH PLATE (RIGHT HAND)	SP808R	GTS-0507	1	1
14	SWITCH PLATE (LEFT HAND)	SP809L	GTS-0506	1	1
15	SWITCH PLATE (RIGHT HAND)	SP809R	GTS-0506	1	1
16	SWITCH PLATE (LEFT HAND)	SP810L	GTS-0506	1	1
17	SWITCH PLATE (RIGHT HAND)	SP810R	GTS-0506	1	1
18	SWITCH PLATE (UNIVERSAL)	SP699	GTS-0616	2	2
19	SWITCH PLATE (UNIVERSAL)	SP653	GTS-0616	2	2
20	SWITCH PLATE (UNIVERSAL)	SP700	GTS-0616	2	2
21	SWITCH PLATE (UNIVERSAL)	SP701	GTS-0616	2	2
22	SWITCH PLATE (UNIVERSAL)	SP702	GTS-0616	2	2
23	SWITCH PLATE (UNIVERSAL)	SP815	GTS-0616	2	2
24	TIE PLATE, DOUBLE SHOULDER - 14" LG. 100/115 LB.	55-14	GTS-0501	82	82
25	SUREFIT BOLTLESS ADJUSTABLE RAIL BRACE - 115 LB	-	GTS-0354	12	12
26	SERRATED WASHER FOR BOLTLESS ADJUSTABLE BRACE		GTS-0354	12	12
27	PANDROL CLIP - e2055	e2055	GTS-1322	12	12
28	HEEL BLOCK - FLOATING FOR 115LB RAIL		GTS-384	2	2
29	BOLT, 1 1/8" DIA X 5-1/2" LONG, 7 UNC C/W NUT	TS1308/10	GTS-1308	4	4
30	SPRING WASHER for 1-1/8" DIA BOLT	-	GTS-1301	4	4
31	LOCKNUT FOR 1-1/8" DIA. - 7 UNC BOLT	-	GTS-1302	4	4
32	TRACK SPIKE - 6" LONG	-	GTS-1325	750	750
33	UNDERCUT STOCK RAIL - 115 LB. R.E. 39'- 0" LG.	1105B	GTS-1105B	1	1
34	BENT UNDERCUT STOCK RAIL - R/H - 115 LB. R.E. 39'- 0" LG.	1109N	GTS-1109N	-	1
	BENT UNDERCUT STOCK RAIL - L/H - 115 LB. R.E. 39'- 0" LG.	1109O	GTS-1109O	1	-
FROG					
50	#10-115 LB. SELF GUARDED MANGANESE STEEL FROG	-		1	1
FROG PACK					
51	FROG PLATE (RIGHT HAND)	FP591R	GTS-0619	-	1
	FROG PLATE (LEFT HAND)	FP591L	GTS-0619	1	-
52	FROG PLATE (RIGHT HAND)	FP592R	GTS-0619	-	1
	FROG PLATE (LEFT HAND)	FP592L	GTS-0619	1	-
53	FROG PLATE (RIGHT HAND)	FP593R	GTS-0619	-	1
	FROG PLATE (LEFT HAND)	FP593L	GTS-0619	1	-
54	FROG PLATE (RIGHT HAND)	FP648R	GTS-0667	-	1
	FROG PLATE (LEFT HAND)	FP648L	GTS-0667	1	-
55	FROG PLATE (RIGHT HAND)	FP645R	GTS-0618	-	1
	FROG PLATE (LEFT HAND)	FP645L	GTS-0618	1	-
56	FROG PLATE (RIGHT HAND)	FP646R	GTS-0618	-	1
	FROG PLATE (LEFT HAND)	FP646L	GTS-0618	1	-
57	FROG PLATE (RIGHT HAND)	FP596R	GTS-0619	-	1
	FROG PLATE (LEFT HAND)	FP596L	GTS-0619	1	-
58	FROG PLATE (RIGHT HAND)	FP597R	GTS-0619	-	1
	FROG PLATE (LEFT HAND)	FP597L	GTS-0619	1	-
59	FROG PLATE (RIGHT HAND)	FP598R	GTS-0619	-	1
	FROG PLATE (LEFT HAND)	FP598L	GTS-0619	1	-
60	TIE PLATE, DOUBLE SHOULDER - 14" LG. 100/115 LB.	55-14	GTS-0501	66	66
61	TRACK SPIKE - 6" LONG	-	GTS-1325	550	550
SWITCH PACKS					
	#10 Hand Operated - Right Hand Turnout, Light Duty				
	#10 Hand Operated - Left Hand Turnout, Light Duty				
FROG PACKS					
	#10 SGM - Right Hand Turnout, Light Duty				
	#10 SGM - Left Hand Turnout, Light Duty				
SWITCH TIES					
	9 ft (2.8 m)			20	20
	10 ft (3.1 m)			11	11
	11 ft (3.4 m)			7	7
	12 ft (3.7 m)			6	6
	13 ft (4.0 m)			7	7
	14 ft (4.3 m)			6	6
	15 ft (4.6 m)			6	6
	16 ft (4.9 m)			10	10
TO CONVERT TO POWER OPERATION					
	Left Hand Turnout				
		GP 433/435			
		GP 434/437			
	Right Hand Turnout				
		GP 436/433			
		GP 438/434			
	SM-100 switch machine plate - QTY 2				
	Switch machine clamp (includes serrated washers) - QTY 2				
	1" Diameter bolt (3.5 inches long) - QTY 4				
	Locknut for one inch bolt - QTY 4				
	Spring washer for one inch diameter bolt - QTY 4				