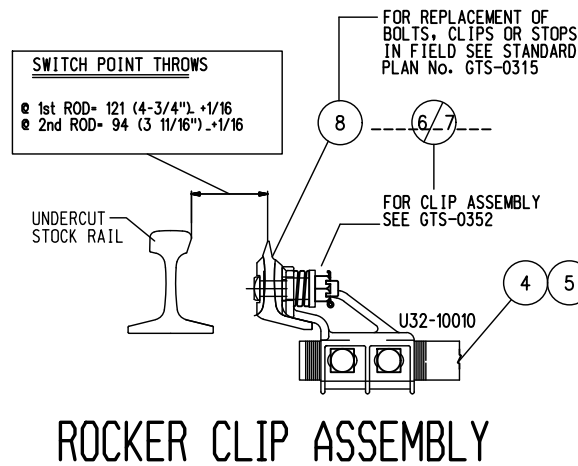
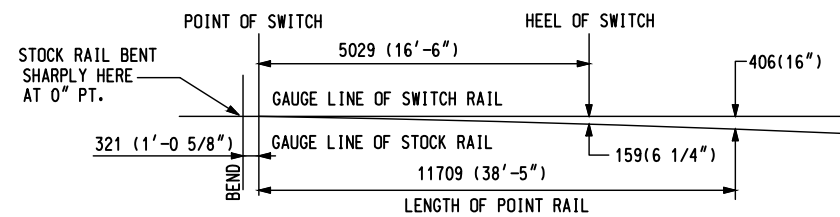


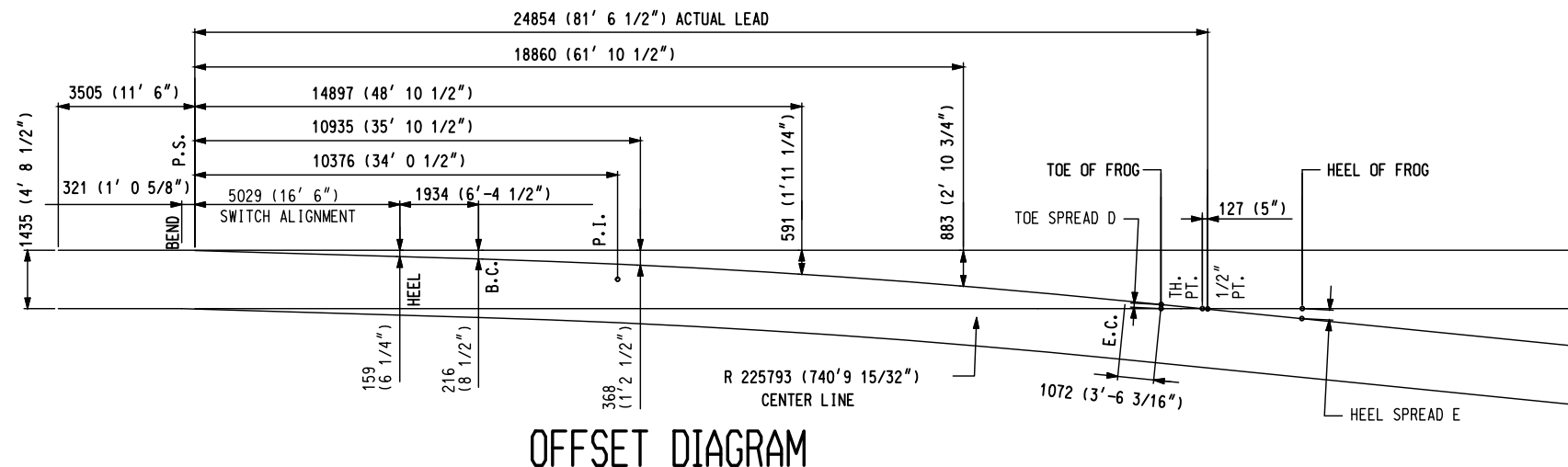
TIE ARRANGEMENT & SPACING



FROGS	RBM	SGM	SPRING	FLANGE BEARING
A	3099 (10'-2")	1143 (3'-9")	4750 (15'-7")	3658 (12'-0")
B	4216 (13'-10")	2324 (7'-7 1/2")	3658 (12'-0")	4216 (13'-10")
C	7315 (24')	3467 (11'-4 1/2")	8407 (27'-7")	7620 (25'-10")
D	297 (11 11/16")	102 (4")	445 (17 17/32")	347 (13 21/32")
E	433 (17 1/16")	245 (9 41/64")	378 (14 7/8")	434 (17 3/32")



STOCK RAIL BENDING DETAIL



OFFSET DIAGRAM

TURNOUT DATA

FROG NO. 10
 LENGTH OF SWITCH PT. 11709 (38'-5")
 HEEL SPREAD 159 (6 1/4")
 LEAD 24854 (81'-6 1/2")

RBM
 10046 (32'-11 1/2") STRAIGHT CLOSURE LENGTH
 10096 (33'-1 1/2") CURVED CLOSURE LENGTH
 P.S. TO H.F. 95'-4 1/2"

SSGM
 12002 (39'-4 1/2") STRAIGHT CLOSURE LENGTH
 12060 (39'-6 13/16") CURVED CLOSURE LENGTH
 P.S. TO H.F. 89'-2"

SPRING
 8395 (27'-6 1/2") STRAIGHT CLOSURE LENGTH
 8453 (27'-8 13/16") CURVED CLOSURE LENGTH
 P.S. TO H.F. 93'-6 1/2"

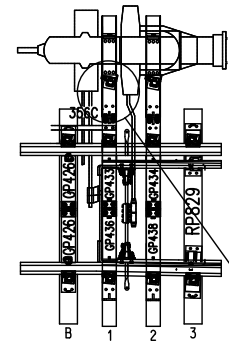
FLANGE BEARING
 9487 (31'-1 1/2") STRAIGHT CLOSURE LENGTH
 9538 (31'-3 1/2") CURVED CLOSURE LENGTH
 P.S. TO H.F. 95'-4 1/2"

NOTES

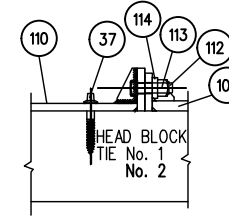
- TURNOUT TO BE INSTALLED AND MAINTAINED IN ACCORDANCE WITH THE LATEST ISSUE OF THE RM.
- WHEN REFERRING TO POWER OPERATED TURNOUTS, DRAWING NUMBER MUST BE STATED TO INDICATE:
 - L-LEFT HAND TURNOUT HAND OPERATED ON LEFT OR RIGHT - RBM FROG
 - M-LEFT HAND TURNOUT HAND OPERATED ON LEFT OR RIGHT - SGM FROG
 - N-LEFT HAND TURNOUT HAND OPERATED ON LEFT OR RIGHT - SPRING FROG
 - O LEFT HAND TURNOUT HAND OPERATED ON LEFT OR RIGHT - FLANGE BEARING
 - R-RIGHT HAND TURNOUT HAND OPERATED ON LEFT OR RIGHT - RBM FROG
 - S-RIGHT HAND TURNOUT HAND OPERATED ON LEFT OR RIGHT - SGM FROG
 - T-RIGHT HAND TURNOUT HAND OPERATED ON LEFT OR RIGHT - SPRING FROG
 - U-RIGHT HAND TURNOUT HAND OPERATED ON LEFT OR RIGHT - FLANGE BEARING
- FOR OTHER STANDARD TURNOUT COMBINATIONS SEE INDEX GTS-0000 SHEET 3 OF 3.
- TURNOUT GEOMETRY, FOR TABLES OF DIMENSIONS AND OFFSETS SEE GTS-0002 NO. 10 TURNOUTS.

METRIC CONVERSION: 1 inch=25.4mm, 1 foot=304.8mm

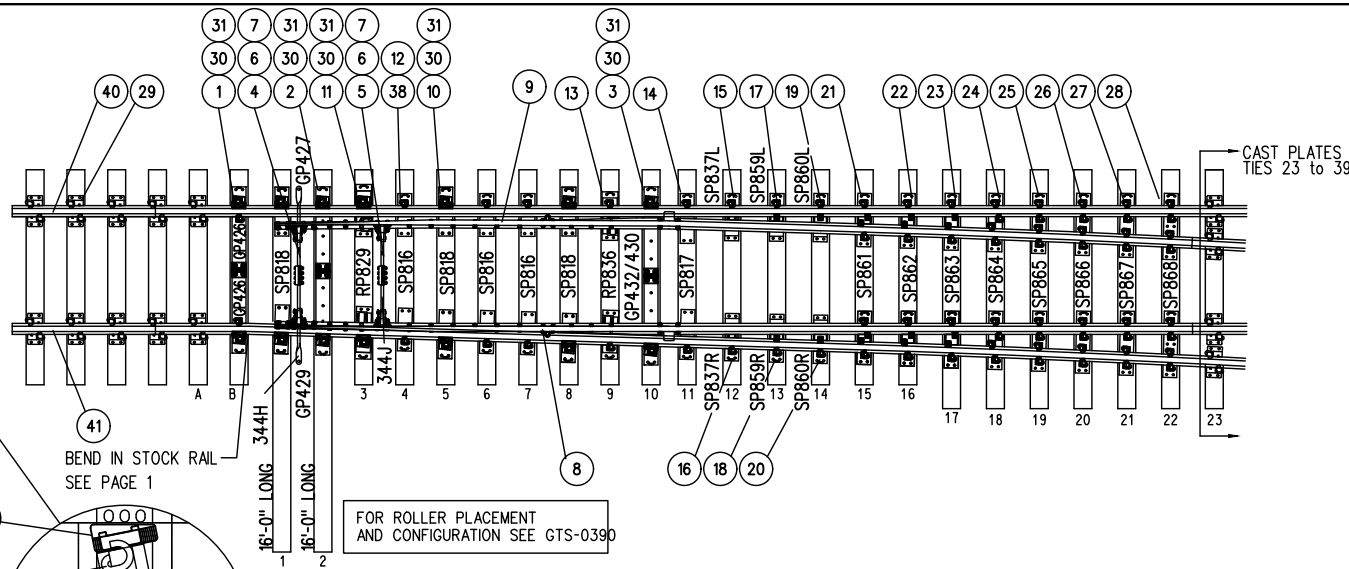
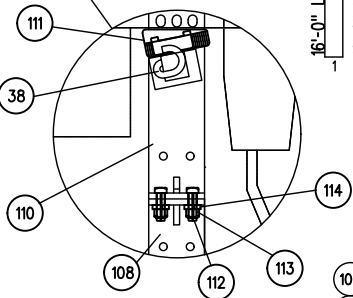
1	18/07/27	ADDED IMPERIAL TO METRIC CONVERSION NOTE
No.	Date	Revision By Approved
Standard/ NO. 10 TURNOUT-115 LB. RAIL HEAVY DUTY 16'6" GEOMETRY 38'5" POINT LENGTH SAMSON SWITCH UNIFORM RISER DESIGN WOOD TIES		
Drawn	Checked	Approved
LG	DGRL	VP Engineering & Asset Management
Date	Plan Number	Rev
SEPT 15/2017	GTS-0017	1
REFERENCE: TS-0017_R4		Sheet 1 OF 2



TO CONVERT TO POWER OPERATION
REFER TO BILL OF MATERIALS

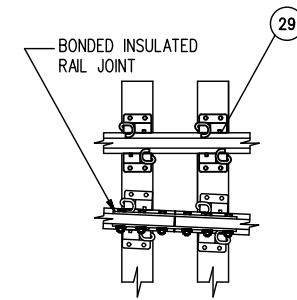


SWITCH MACHINE PLATE ASSEMBLY



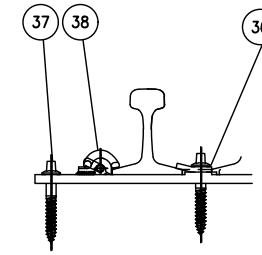
BEND IN STOCK RAIL
SEE PAGE 1

FOR ROLLER PLACEMENT
AND CONFIGURATION SEE GTS-0390

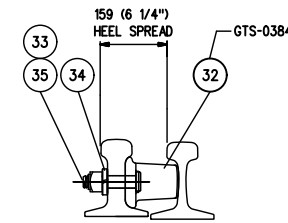


GENERAL ARRANGEMENT

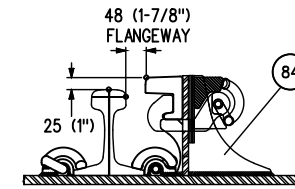
DRAWING NO. GTS-0017R
RIGHT HAND TURNOUT



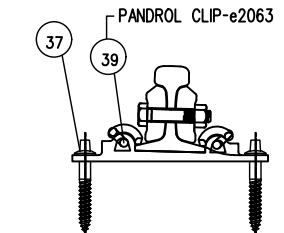
HOLD-DOWN CLIP ASSEMBLY



HEEL BLOCK ASSEMBLY

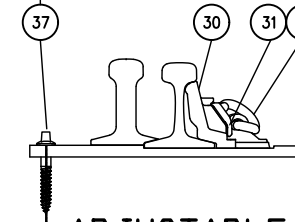


BOLTLESS GUARD RAIL ASSEMBLY

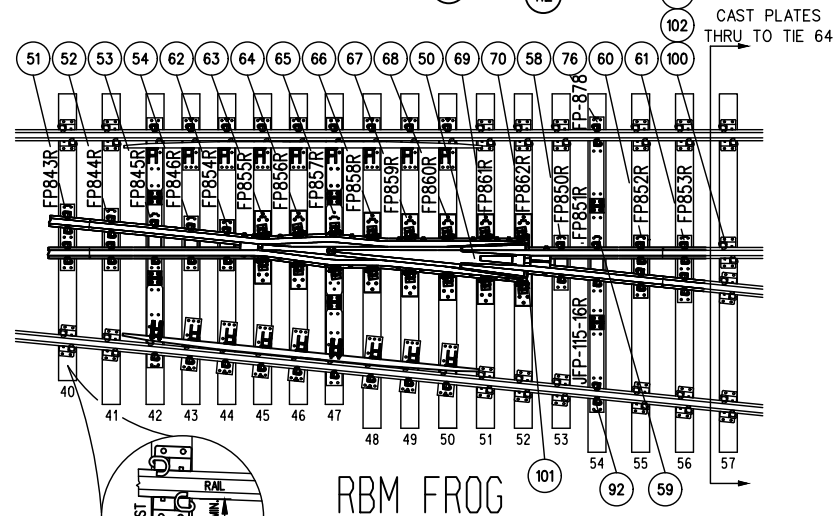


BONDED INSULATED RAIL JOINT

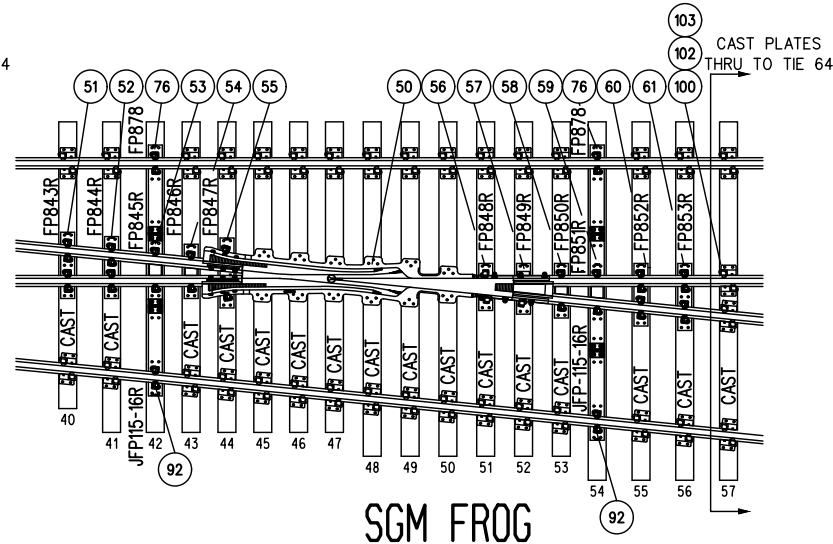
ALL TIE SCREW HOLES TO BE DRILLED
17 (21/32") DIA. x MINIMUM 127 (5") DEEP



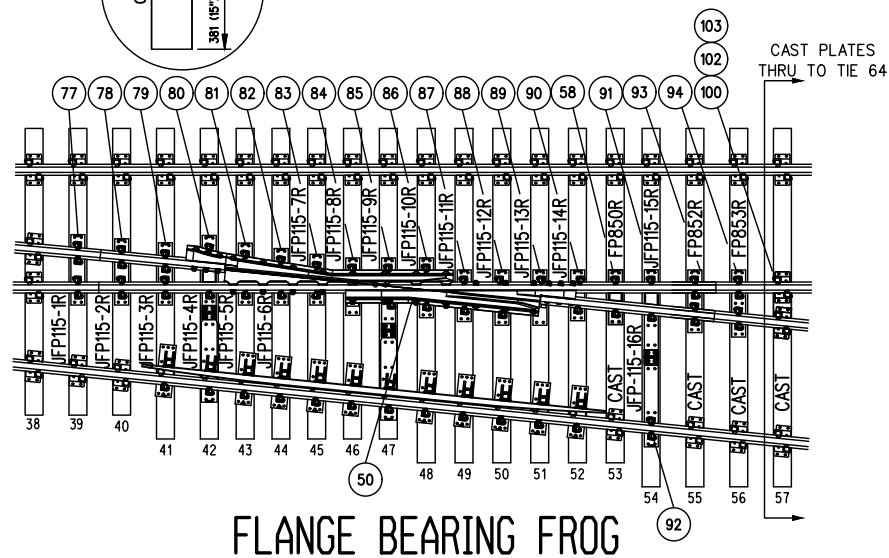
ADJUSTABLE RAIL BRACE ASSEMBLY



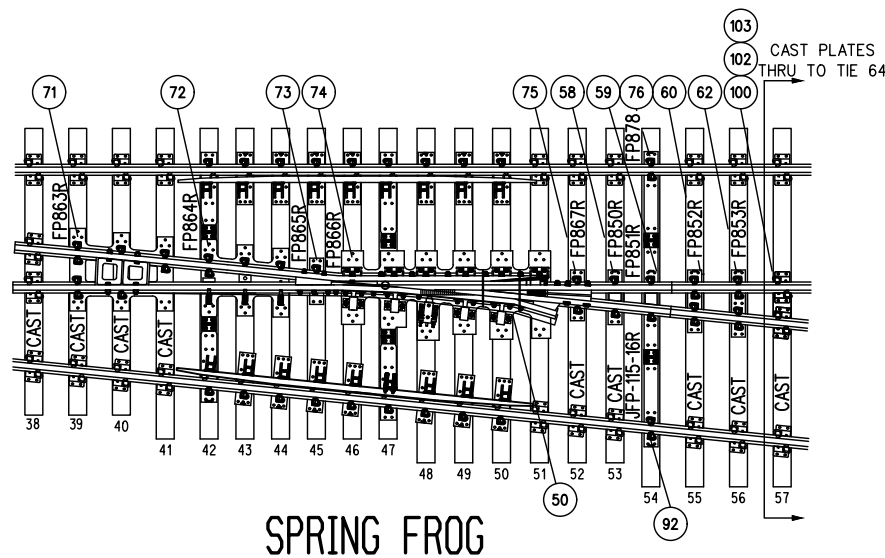
RBM FROG



SGM FROG



FLANGE BEARING FROG



SPRING FROG

METRIC CONVERSION: 1 inch=25.4mm, 1 foot=304.8mm

1	18/07/27	ADDED IMPERIAL TO METRIC CONVERSION NOTE	
No.	Date	Revision	By Approved

Standard / **NO. 10 TURNOUT-115 LB. RAIL HEAVY DUTY
16" GEOMETRY
38" POINT LENGTH SAMSON SWITCH
UNIFORM RISER DESIGN WOOD TIES**

Drawn	Checked	Approved
LG	DGRL	<i>[Signature]</i> VP Engineering & Asset Management



METROLINX

Date	SEPT 15/2017	Plan Number	GTS-0017	Rev	1
------	--------------	-------------	----------	-----	---

REFERENCE: TS-0017_R4

Sheet 2 OF 2

BILL OF MATERIALS FOR GTS-0017

ITEM	DESCRIPTION	MARK NUMBER	STANDARD DRAWING	QUANTITY							
				L	M	N	O	R	S	T	U
SWITCH PACK											
1	1st. GAUGE PLATE ASSEMBLY	GP426/GP426	GTS-0521	1	1	1	1	1	1	1	1
2	GAUGE PLATE ASSEMBLY - TIE 2	GP427/GP428	GTS-0521	1	1	1	1	-	-	-	1
	GAUGE PLATE ASSEMBLY - TIE 2	GP429/GP427	GTS-0521	-	-	-	-	1	1	1	-
3	GAUGE PLATE ASSEMBLY - TIE 10	GP430/GP431	GTS-0521	1	1	1	1	-	-	-	1
	GAUGE PLATE ASSEMBLY - TIE 10	GP432/GP430	GTS-0521	-	-	-	-	1	1	1	-
4	SWITCH ROD	344H	GTS-0344H	1	1	1	1	1	1	1	1
5	SWITCH ROD	344J	GTS-0344J	1	1	1	1	1	1	1	1
6	ROCKER CLIP ASSEMBLY	352P	GTS-0352P	1	1	1	1	1	1	1	1
7	ROCKER CLIP ASSEMBLY	352P	GTS-0352Q	1	1	1	1	1	1	1	1
8	RIGHT CURVED SAMSON POINT RAIL - 38'-5"		GTS-0315	1	1	1	1	-	-	-	-
	RIGHT STRAIGHT SAMSON POINT RAIL - 38'-5"		GTS-0315	-	-	-	-	1	1	1	1
9	LEFT STRAIGHT SAMSON POINT RAIL - 38'-5"		GTS-0315	1	1	1	1	-	-	-	-
	LEFT CURVED SAMSON POINT RAIL - 38'-5"		GTS-0315	-	-	-	-	1	1	1	1
10	SWITCH PLATE - LV BRACE PLATE	SP818 LV	GTS-0508	6	6	6	6	6	6	6	6
11	ROLLER PLATE - LV BRACE	RP829 LV	GTS-0508	2	2	2	2	2	2	2	2
12	SWITCH PLATE (UNIVERSAL)	SP816	GTS-0530	6	6	6	6	6	6	6	6
13	ROLLER PLATE	RP836	GTS-0530	2	2	2	2	2	2	2	2
14	SWITCH PLATE (UNIVERSAL)	SP817	GTS-0530	2	2	2	2	2	2	2	2
15	SWITCH PLATE (LEFT HAND)	SP837L	GTS-0586	1	1	1	1	1	1	1	1
16	SWITCH PLATE (RIGHT HAND)	SP837R	GTS-0586	1	1	1	1	1	1	1	1
17	SWITCH PLATE (LEFT HAND)	SP859L	GTS-0586	1	1	1	1	1	1	1	1
18	SWITCH PLATE (RIGHT HAND)	SP859R	GTS-0586	1	1	1	1	1	1	1	1
19	SWITCH PLATE (LEFT HAND)	SP860L	GTS-0586	1	1	1	1	1	1	1	1
20	SWITCH PLATE (RIGHT HAND)	SP860R	GTS-0586	1	1	1	1	1	1	1	1
21	SWITCH PLATE	SP861	GTS-0530	2	2	2	2	2	2	2	2
22	SWITCH PLATE	SP862	GTS-0530	2	2	2	2	2	2	2	2
23	SWITCH PLATE	SP863	GTS-0530	2	2	2	2	2	2	2	2
24	SWITCH PLATE	SP864	GTS-0560	2	2	2	2	2	2	2	2
25	SWITCH PLATE	SP865	GTS-0560	2	2	2	2	2	2	2	2
26	SWITCH PLATE	SP866	GTS-0560	2	2	2	2	2	2	2	2
27	SWITCH PLATE	SP867	GTS-0560	82	82	82	82	82	82	82	82
28	SWITCH PLATE	SP868	GTS-0560	82	82	82	82	82	82	82	82
29	CAST TIE PLATE		GTS-0501	82	82	82	82	82	82	82	82
30	BOLTLESS ADJUSTABLE LV / CLAMPTITE BRACE		GTS-0354	14	14	14	14	14	14	14	14
31	SERRATED WASHER FOR BOLTLESS LV / CLAMPTITE BRACE		GTS-0354	14	14	14	14	14	14	14	14
32	HEEL BLOCK - FLOATING FOR 115LB RAIL		GTS-0384	2	2	2	2	2	2	2	2
33	BOLT, 1 1/8" DIA X 5-1/2" LONG, 7 UNC C/W NUT	TS1308/10	GTS-1308	4	4	4	4	4	4	4	4
34	SPRING WASHER for 1-1/8" DIA BOLT		GTS-1301	4	4	4	4	4	4	4	4
35	LOCKNUT FOR 1-1/8" DIA. - 7 UNC BOLT		GTS-1302	4	4	4	4	4	4	4	4
36	HOLD DOWN CLIP	FS156	GTS-1334	16	16	16	16	16	16	16	16
37	SCREW SPIKE - POINTED	COMMON STANDARD	GTS-1315	525	525	525	525	525	525	525	525
SWITCH PACK continued											
38	PANDROL CLIP - e2055	e2055	GTS-1322	250	250	250	250	250	250	250	250
39	PANDROL CLIP - e2063 (for INSULATED RAIL JOINTS)	e2063	GTS-1322	8	8	8	8	8	8	8	8
40	UNDERCUT STOCK RAIL - 115 LB. R.E. 39'- 0" LG.	1105B	GTS-1105B	1	1	1	1	1	1	1	1
41	BENT UNDERCUT STOCK RAIL - R/H - 115 LB. R.E. 44'- 5" LG.	1109N	GTS-1109N	-	-	-	-	1	1	1	1
	BENT UNDERCUT STOCK RAIL - L/H - 115 LB. R.E. 44'- 5" LG.	1109O	GTS-1109O	1	1	1	1	-	-	-	-
FROG											
50	#10-115 LB. RAIL BOUND MANGANESE FROG - LOW IMPACT 22'2"			1	-	-	-	1	-	-	-
	MAINTENANCE LENGTH FROG - CUT TO SHORTEST LENGTH										
	#10-115 LB. SELF GUARDED MANGANESE STEEL FROG			-	1	-	-	-	1	-	-
	#10-115 LB. SPRING FROG - LEFT HAND			-	-	1	-	-	-	-	-
	#10-115 LB. SPRING FROG - RIGHT HAND			-	-	-	-	-	-	1	-
	#10-115 LB. FLANGE BEARING FROG - LEFT HAND			-	-	-	1	-	-	-	-
	#10-115 LB. FLANGE BEARING FROG - RIGHT HAND			-	-	-	-	-	-	-	1
FROG PACK RBM FROG											
51	FROG PLATE (LEFT HAND)	FP843L	GTS-0547	1	-	-	-	-	-	-	-
	FROG PLATE (RIGHT HAND)	FP843R	GTS-0547	-	-	-	-	1	-	-	-
52	FROG PLATE (LEFT HAND)	FP844L	GTS-0556	1	-	-	-	-	-	-	-
	FROG PLATE (RIGHT HAND)	FP844R	GTS-0556	-	-	-	-	1	-	-	-
53	FROG PLATE (LEFT HAND)	FP845L	GTS-0615	1	-	-	-	-	-	-	-
	FROG PLATE (RIGHT HAND)	FP845R	GTS-0615	-	-	-	-	1	-	-	-
54	FROG PLATE (LEFT HAND)	FP846L	GTS-0615	1	-	-	-	-	-	-	-
	FROG PLATE (RIGHT HAND)	FP846R	GTS-0615	-	-	-	-	1	-	-	-
58	FROG PLATE (LEFT HAND)	FP850L	GTS-0615	1	-	-	-	-	-	-	-
	FROG PLATE (RIGHT HAND)	FP850R	GTS-0615	-	-	-	-	1	-	-	-
59	FROG PLATE (LEFT HAND)	FP851L	GTS-0615	1	-	-	-	-	-	-	-
	FROG PLATE (RIGHT HAND)	FP851R	GTS-0615	-	-	-	-	1	-	-	-
60	FROG PLATE (LEFT HAND)	FP852L	GTS-0556	1	-	-	-	-	-	-	-
	FROG PLATE (RIGHT HAND)	FP852R	GTS-0556	-	-	-	-	1	-	-	-
61	FROG PLATE (LEFT HAND)	FP853L	GTS-0547	1	-	-	-	-	-	-	-
	FROG PLATE (RIGHT HAND)	FP853R	GTS-0547	-	-	-	-	1	-	-	-
62	FROG PLATE (LEFT HAND)	FP854L	GTS-0554	1	-	-	-	-	-	-	-
	FROG PLATE (RIGHT HAND)	FP854R	GTS-0554	-	-	-	-	1	-	-	-
63	FROG PLATE (LEFT HAND)	FP855L	GTS-0694	1	-	-	-	-	-	-	-
	FROG PLATE (RIGHT HAND)	FP855R	GTS-0694	-	-	-	-	1	-	-	-
64	FROG PLATE (LEFT HAND)	FP856L	GTS-0694	1	-	-	-	-	-	-	-
	FROG PLATE (RIGHT HAND)	FP856R	GTS-0694	-	-	-	-	1	-	-	-
65	FROG PLATE (LEFT HAND)	FP857L	GTS-0694	1	-	-	-	-	-	-	-
	FROG PLATE (RIGHT HAND)	FP857R	GTS-0694	-	-	-	-	1	-	-	-
66	FROG PLATE (LEFT HAND)	FP858L	GTS-0694	1	-	-	-	-	-	-	-
	FROG PLATE (RIGHT HAND)	FP858R	GTS-0694	-	-	-	-	1	-	-	-
67	FROG PLATE (LEFT HAND)	FP859L	GTS-0694	1	-	-	-	-	-	-	-
	FROG PLATE (RIGHT HAND)	FP859R	GTS-0694	-	-	-	-	1	-	-	-
68	FROG PLATE (LEFT HAND)	FP860L	GTS-0694	1	-	-	-	-	-	-	-
	FROG PLATE (RIGHT HAND)	FP860R	GTS-0694	-	-	-	-	1	-	-	-
69	FROG PLATE (LEFT HAND)	FP861L	GTS-0694	1	-	-	-	-	-	-	-
	FROG PLATE (RIGHT HAND)	FP861R	GTS-0694	-	-	-	-	1	-	-	-
70	FROG PLATE (LEFT HAND)	FP862L	GTS-0694	1	-	-	-	-	-	-	-
	FROG PLATE (RIGHT HAND)	FP862R	GTS-0694	-	-	-	-	1	-	-	-
76	FROG PLATE	FP878		1	-	-	-	1	-	-	-
92	FROG PLATE (LEFT HAND)	JFP-115-16L		1	-	-	-	-	-	-	-
	FROG PLATE (RIGHT HAND)	JFP-115-16R						1			
100	CAST TIE PLATE		GTS-0501	48				46			

BILL OF MATERIALS FOR GTS-0017

ITEM	DESCRIPTION	MARK NUMBER	STANDARD DRAWING	QUANTITY								
				L	M	N	O	R	S	T	U	
101	PANDROL FROG CLAMP INCLUDES SERRATED WASHER		GTS-0365	16				16				
102	SCREW SPIKE - POINTED	COMMON STANDARD	GTS-1315	350				350				
103	PANDROL CLIP - e2055	e2055	GTS-1322	160				160				
	FROG PACK SGM FROG											
51	FROG PLATE (LEFT HAND)	FP843L	GTS-0547	-	1	-	-	-	-	-	-	-
	FROG PLATE (RIGHT HAND)	FP843R	GTS-0547	-	-	-	-	-	1	-	-	-
52	FROG PLATE (LEFT HAND)	FP844L	GTS-0556	-	1	-	-	-	-	-	-	-
	FROG PLATE (RIGHT HAND)	FP844R	GTS-0556	-	-	-	-	-	1	-	-	-
53	FROG PLATE (LEFT HAND)	FP845L	GTS-0615	-	1	-	-	-	-	-	-	-
	FROG PLATE (RIGHT HAND)	FP845R	GTS-0615	-	-	-	-	-	1	-	-	-
54	FROG PLATE (LEFT HAND)	FP846L	GTS-0615	-	1	-	-	-	-	-	-	-
	FROG PLATE (RIGHT HAND)	FP846R	GTS-0615	-	-	-	-	-	1	-	-	-
55	FROG PLATE (LEFT HAND)	FP847L	GTS-0554	-	1	-	-	-	-	-	-	-
	FROG PLATE (RIGHT HAND)	FP847R	GTS-0554	-	-	-	-	-	1	-	-	-
56	FROG PLATE (LEFT HAND)	FP848L	GTS-0554	-	1	-	-	-	-	-	-	-
	FROG PLATE (RIGHT HAND)	FP848R	GTS-0554	-	-	-	-	-	1	-	-	-
57	FROG PLATE (LEFT HAND)	FP849L	GTS-0630	-	1	-	-	-	-	-	-	-
	FROG PLATE (RIGHT HAND)	FP849R	GTS-0630	-	-	-	-	-	1	-	-	-
58	FROG PLATE (LEFT HAND)	FP850L	GTS-0615	-	1	-	-	-	-	-	-	-
	FROG PLATE (RIGHT HAND)	FP850R	GTS-0615	-	-	-	-	-	1	-	-	-
59	FROG PLATE (LEFT HAND)	FP851L	GTS-0615	-	1	-	-	-	-	-	-	-
	FROG PLATE (RIGHT HAND)	FP851R	GTS-0615	-	-	-	-	-	1	-	-	-
60	FROG PLATE (LEFT HAND)	FP852L	GTS-0556	-	1	-	-	-	-	-	-	-
	FROG PLATE (RIGHT HAND)	FP852R	GTS-0556	-	-	-	-	-	1	-	-	-
61	FROG PLATE (LEFT HAND)	FP853L	GTS-0547	-	1	-	-	-	-	-	-	-
	FROG PLATE (RIGHT HAND)	FP853R	GTS-0547	-	-	-	-	-	1	-	-	-
76	FROG PLATE	FP878	GTS-0615	-	2	-	-	-	-	2	-	-
92	FROG PLATE (LEFT HAND)	JFP-115-16L		-	2	-	-	-	-	-	-	-
	FROG PLATE (RIGHT HAND)	JFP-115-16R		-	-	-	-	-	2	-	-	-
100	CAST TIE PLATE		GTS-0501		66				66			
102	SCREW SPIKE - POINTED	COMMON STANDARD	GTS-1315		350				350			
103	PANDROL CLIP - e2055	e2055	GTS-1322		175				175			
	FROG PACK FLANGE BEARING FROG											
58	FROG PLATE (LEFT HAND)	FP850L	GTS-0615	-	-	-	1	-	-	-	-	-
	FROG PLATE (RIGHT HAND)	FP850R	GTS-0615	-	-	-	-	-	-	-	1	-
77	FROG PLATE (LEFT HAND)	JFP-115-1L		-	-	-	1	-	-	-	-	-
	FROG PLATE (RIGHT HAND)	JFP-115-1R		-	-	-	-	-	-	-	1	-
78	FROG PLATE (LEFT HAND)	JFP-115-2L		-	-	-	1	-	-	-	-	-
	FROG PLATE (RIGHT HAND)	JFP-115-2R		-	-	-	-	-	-	-	1	-
79	FROG PLATE (LEFT HAND)	JFP-115-3L		-	-	-	1	-	-	-	-	-
	FROG PLATE (RIGHT HAND)	JFP-115-3R		-	-	-	-	-	-	-	1	-
80	FROG PLATE (LEFT HAND)	JFP-115-4L		-	-	-	1	-	-	-	-	-
	FROG PLATE (RIGHT HAND)	JFP-115-4R		-	-	-	-	-	-	-	1	-
81	FROG PLATE (LEFT HAND)	JFP-115-5L		-	-	-	1	-	-	-	-	-
	FROG PLATE (RIGHT HAND)	JFP-115-5R		-	-	-	-	-	-	-	1	-
82	FROG PLATE (LEFT HAND)	JFP-115-6L		-	-	-	1	-	-	-	-	-
	FROG PLATE (RIGHT HAND)	JFP-115-6R		-	-	-	-	-	-	-	1	-
83	FROG PLATE (LEFT HAND)	JFP-115-7L		-	-	-	1	-	-	-	-	-
	FROG PLATE (RIGHT HAND)	JFP-115-7R		-	-	-	-	-	-	-	1	-
84	FROG PLATE (LEFT HAND)	JFP-115-8L		-	-	-	1	-	-	-	-	-
	FROG PLATE (RIGHT HAND)	JFP-115-8R		-	-	-	-	-	-	-	1	-
85	FROG PLATE (LEFT HAND)	JFP-115-9L		-	-	-	1	-	-	-	-	-
	FROG PLATE (RIGHT HAND)	JFP-115-9R		-	-	-	-	-	-	-	1	-
86	FROG PLATE (LEFT HAND)	JFP-115-10L		-	-	-	1	-	-	-	-	-
	FROG PLATE (RIGHT HAND)	JFP-115-10R		-	-	-	-	-	-	-	1	-
87	FROG PLATE (LEFT HAND)	JFP-115-11L		-	-	-	1	-	-	-	-	-
	FROG PLATE (RIGHT HAND)	JFP-115-11R		-	-	-	-	-	-	-	1	-
88	FROG PLATE (LEFT HAND)	JFP-115-12L		-	-	-	1	-	-	-	-	-
	FROG PLATE (RIGHT HAND)	JFP-115-12R		-	-	-	-	-	-	-	1	-
89	FROG PLATE (LEFT HAND)	JFP-115-13L		-	-	-	1	-	-	-	-	-
	FROG PLATE (RIGHT HAND)	JFP-115-13R		-	-	-	-	-	-	-	1	-
90	FROG PLATE (LEFT HAND)	JFP-115-14L		-	-	-	1	-	-	-	-	-
	FROG PLATE (RIGHT HAND)	JFP-115-14R		-	-	-	-	-	-	-	1	-
91	FROG PLATE (LEFT HAND)	JFP-115-15L		-	-	-	1	-	-	-	-	-
	FROG PLATE (RIGHT HAND)	JFP-115-15R		-	-	-	-	-	-	-	1	-
92	FROG PLATE (LEFT HAND)	JFP-115-16L		-	-	-	1	-	-	-	-	-
	FROG PLATE (RIGHT HAND)	JFP-115-16R		-	-	-	-	-	-	-	1	-
93	FROG PLATE (LEFT HAND)	FP852L	GTS-0556	-	-	-	1	-	-	-	-	-
	FROG PLATE (RIGHT HAND)	FP852R	GTS-0556	-	-	-	-	-	-	-	1	-
94	FROG PLATE (LEFT HAND)	FP853L	GTS-0547	-	-	-	1	-	-	-	-	-
	FROG PLATE (RIGHT HAND)	FP853R	GTS-0547	-	-	-	-	-	-	-	1	-
100	CAST TIE PLATE		GTS-0501					46				46
102	SCREW SPIKE - POINTED	COMMON STANDARD	GTS-1315					350				350
103	PANDROL CLIP - e2055	e2055	GTS-1322					160				160
	FROG PACK SPRING FROG											
58	FROG PLATE (LEFT HAND)	FP850L	GTS-0615	-	1	-	-	-	-	-	-	-
	FROG PLATE (RIGHT HAND)	FP850R	GTS-0615	-	-	-	-	-	-	-	1	-
59	FROG PLATE (LEFT HAND)	FP851L	GTS-0615	-	1	-	-	-	-	-	-	-
	FROG PLATE (RIGHT HAND)	FP851R	GTS-0615	-	-	-	-	-	-	-	1	-
60	FROG PLATE (LEFT HAND)	FP852L	GTS-0556	-	1	-	-	-	-	-	-	-
	FROG PLATE (RIGHT HAND)	FP852R	GTS-0556	-	-	-	-	-	-	-	1	-
62	FROG PLATE (LEFT HAND)	FP853L	GTS-0547	-	1	-	-	-	-	-	-	-
	FROG PLATE (RIGHT HAND)	FP853R	GTS-0547	-	-	-	-	-	-	-	1	-
71	FROG PLATE (LEFT HAND)	FP863L		-	1	-	-	-	-	-	-	-
	FROG PLATE (RIGHT HAND)	FP863R		-	-	-	-	-	-	-	1	-
72	FROG PLATE (LEFT HAND)	FP864L		-	1	-	-	-	-	-	-	-
	FROG PLATE (RIGHT HAND)	FP864R		-	-	-	-	-	-	-	1	-
73	FROG PLATE (LEFT HAND)	FP865L		-	1	-	-	-	-	-	-	-
	FROG PLATE (RIGHT HAND)	FP865R		-	-	-	-	-	-	-	1	-
74	FROG PLATE (LEFT HAND)	FP866L		-	1	-	-	-	-	-	-	-
	FROG PLATE (RIGHT HAND)	FP866R		-	-	-	-	-	-	-	1	-
75	FROG PLATE (LEFT HAND)	FP867L		-	1	-	-	-	-	-	-	-
	FROG PLATE (RIGHT HAND)	FP867R		-	-	-	-	-	-	-	1	-
76	FROG PLATE	FP878		-	1	-	-	-	-	-	-	-
92	FROG PLATE (LEFT HAND)	JFP-115-16L		-	1	-	-	-	-	-	-	-
	FROG PLATE (RIGHT HAND)	JFP-115-16R		-	-	-	-	-	-	-	1	-
100	CAST TIE PLATE		GTS-0501		66							46
102	SCREW SPIKE - POINTED	COMMON STANDARD	GTS-1315		350							350
103	PANDROL CLIP - e2055	e2055	GTS-1322		175							160

BILL OF MATERIALS FOR GTS-0017

ITEM	DESCRIPTION	MARK NUMBER	STANDARD DRAWING	QUANTITY									
				L	M	N	O	R	S	T	U		
	GUARD RAIL PACK												
104	115LB GUARD RAIL ASSY.- UNIVERSAL	1123	GTS-1123	2	-	2		2	-	2			
105	PANDROL CLIP - e2055	e2055	GTS-1322	90	-	90		90	-	90			
	SWITCH PACKS												
	#10 Hand Operated - Right Hand Turnout, Heavy Duty												
	#10 Hand Operated - Left Hand Turnout, Heavy Duty												
	FROG PACKS												
	#10 SGM - Right Hand Turnout, Heavy Duty												
	#10 SGM - Left Hand Turnout, Heavy Duty												
	#10 RBM - Right Hand Turnout, Heavy Duty												
	#10 RBM - Left Hand Turnout, Heavy Duty												
	#10 Flange Bearing - Right Hand Turnout - Nortrak												
	#10 Flange Bearing - Left Hand Turnout - Nortrak												
	#10 Flange Bearing - Right Hand Turnout - Progress												
	#10 Flange Bearing - Left Hand Turnout - Progress												
	SWITCH TIES												
	9 ft (2.8 m)			20	20	20	20	20	20	20	20	20	20
	10 ft (3.1 m)			11	11	11	11	11	11	11	11	11	11
	11 ft (3.4 m)			7	7	7	7	7	7	7	7	7	7
	12 ft (3.7 m)			6	6	6	6	6	6	6	6	6	6
	13 ft (4.0 m)			7	7	7	7	7	7	7	7	7	7
	14 ft (4.3 m)			6	6	6	6	6	6	6	6	6	6
	15 ft (4.6 m)			6	6	6	6	6	6	6	6	6	6
	16 ft (4.9 m)			7	7	7	7	7	7	7	7	7	7
	TO CONVERT TO POWER OPERATION												
	Left Hand Turnout												
106	GAUGE PLATE ASSY -TIE 1	GP 433/435											
107	GAUGE PLATE ASSY -TIE 2	GP 434/437											
	Right Hand Turnout												
108	GAUGE PLATE ASSY -TIE 1	GP 436/433											
109	GAUGE PLATE ASSY -TIE 2	GP 438/434											
110	SM-100 switch machine plate - QTY 2												
111	Switch machine clamp (includes serrated washers) - QTY 2												
112	1" Diameter bolt (3.5 inches long) - QTY 4												
113	Locknut for one inch bolt - QTY 4												
114	Spring washer for one inch diameter bolt - QTY 4												