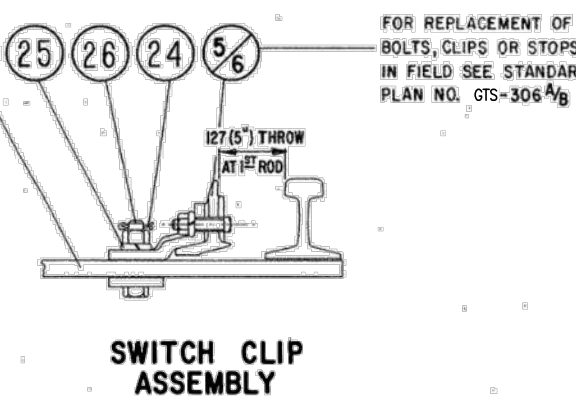
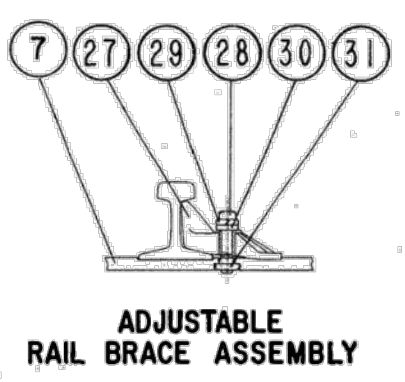


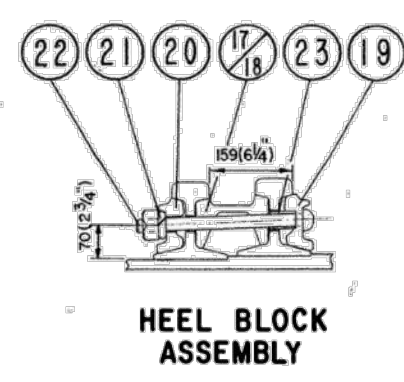
GENERAL ARRANGEMENT
DRAWING NO. GTS-0036 A
RIGHT HAND TURNOUT



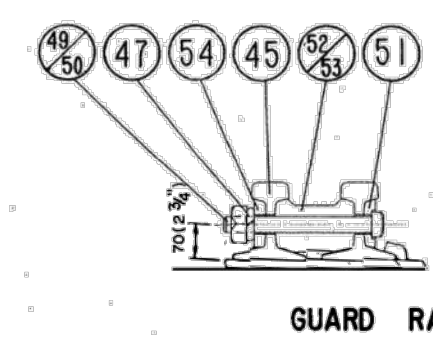
SWITCH CLIP ASSEMBLY



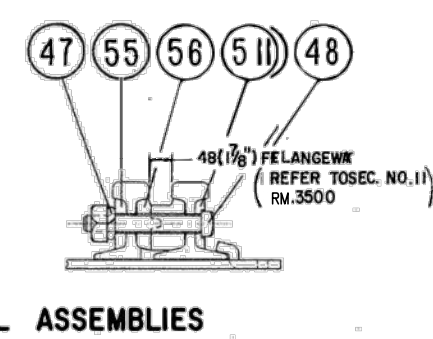
ADJUSTABLE RAIL BRACE ASSEMBLY



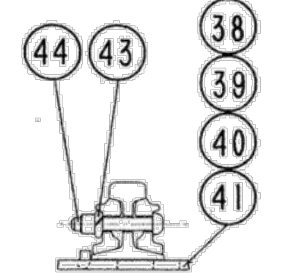
HEEL BLOCK ASSEMBLY



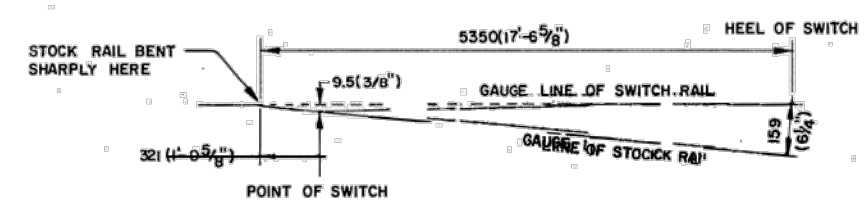
GUARD RAIL ASSEMBLIES



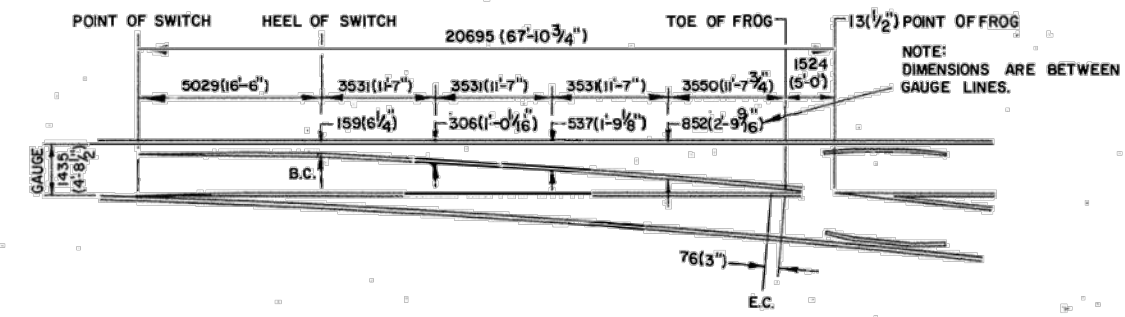
SPLICE BAR ASSEMBLY



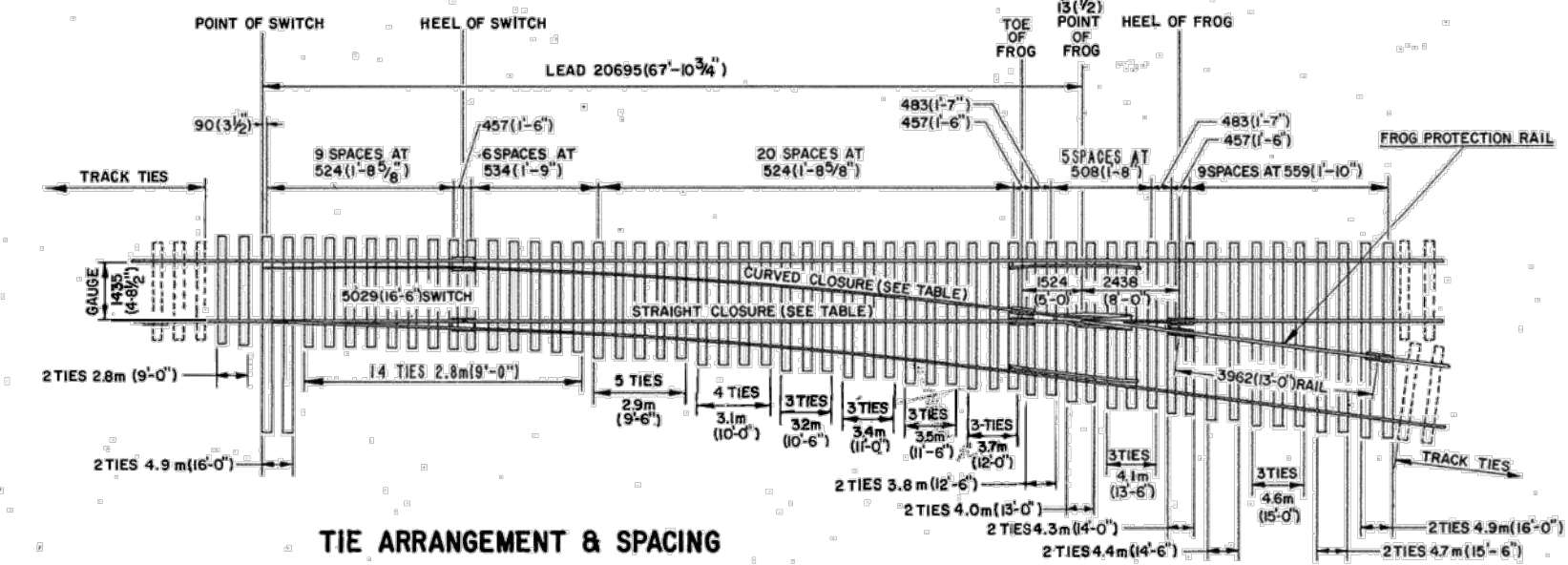
- NOTES:**
- TURNOUT TO BE INSTALLED AND MAINTAINED IN ACCORDANCE WITH THE LATEST ISSUE OF:
RM.3500 TURNOUTS
RM.3502 POWER, SPRING AND INSULATED SWITCHES
RM.3506 SWITCH STAND, SWITCH LAMPS AND TARGETS, WHERE APPLICABLE
 - WHEN REFERRING TO MANUAL TURNOUTS, DRAWING NUMBER MUST BE STATED AS "A" OR "B" TO INDICATE:
A- RIGHT HAND TURNOUT (ILLUSTRATED)
B- LEFT HAND TURNOUT
 - FOR GENERAL ARRANGEMENT OF SWITCH STAND & CONNECTING ROD SEE GTS-0701 AND GTS-0702.
 - FOR THE VARIOUS STANDARD TURNOUT COMBINATIONS SEE INDEX SHEET GTS-0000
 - TURNOUT GEOMETRY, FOR TABLES OF DIMENSIONS AND OFFSETS SEE GTS-0001



STOCK RAIL BENDING DETAIL



OFFSET DIAGRAM



TIE ARRANGEMENT & SPACING

TURNOUT DATA

FROG NO.	8
LENGTH OF SW. PT.	5029 (16'-6")
HEEL SPREAD	159 (6'-1/4")
LEAD	20 695 (67'-10-3/4")
PS. TO H.F.	23 133 (75'-10-3/4")

14143 (46'-4-3/4") STRAIGHT CLOSURE LENGTH
MADE UP BY A 14143 (46'-4-3/4") RAIL OR:
A10058 (33') & 4085 (13'-4-3/4") RAIL.
A 9144 (30') & 4999 (16'-4-3/4") RAIL.

14205 (46'-7-1/4") CURVED CLOSURE LENGTH
MADE UP BY A 14205 (46'-7-1/4") RAIL OR:
A10058 (33') & 4147 (13'-7-1/4") RAIL.
A 9144 (30') & 5061 (16'-7-1/4") RAIL.

METRIC CONVERSION: 1 inch=25.4mm, 1 foot=304.8mm

1	18/07/27	ADDED IMPERIAL TO METRIC CONVERSION NOTE	
No.	Date	Revision	By Approved
Standard		NO. 8 TURNOUT-16'-6" POINTS R.B.M. FROG-INSULATED 100LB. A.R.A.-A. RAIL	
Drawn	MG	Checked	CGS
		Approved	VP Engineering & Asset Management



Date DEC 15, 2017 Plan Number GTS-0036 Rev 1

BILL OF MATERIALS FOR GTS-0036						
ITEM	DESCRIPTION	STANDARD DRAWING	MARK NO.	QUANTITY		
				A	B	
SWITCH PACK						
1	1st. GAUGE PLATE C/W INSULATION PLATE 100/132	GTS-0521	GP60/GP60	1	1	
2	2nd. GAUGE PLATE C/W INSULATION PLATE 100/132	GTS-0521	GP65/GP61	1	-	
-	2nd. GAUGE PLATE C/W INSULATION PLATE 100/132	GTS-0521	GP61/GP62	-	1	
3	SWITCH ROD	GTS-0341A	341A	1	1	
4	SWITCH ROD	GTS-0341D	341D	1	1	
5	RIGHT POINT RAIL	GTS-0306A	306A	1	1	
6	LEFT POINT RAIL	GTS-0306B	306B	1	1	
7	SWITCH PLATE	GTS-0508	SP300	8	8	
8	SWITCH PLATE	GTS-0509	SP301	10	10	
9	SWITCH PLATE	GTS-0504	SP123	2	2	
10	SWITCH PLATE	GTS-0507	SP151	2	2	
11	SWITCH PLATE	GTS-0507	SP152	2	2	
12	SWITCH PLATE	GTS-0506	SP153	2	2	
13	HOOK TWIN TIE PLATE	GTS-0503	LR27	8	8	
14	HOOK TWIN TIE PLATE	GTS-0503	L27	8	8	
15	HOOK TWIN TIE PLATE	GTS-0503	LR31	4	4	
16	HOOK TWIN TIE PLATE	GTS-0503	L31	4	4	
17	HEEL BLOCK(RIGHT HAND)	GTS-0358	16-6&22CP1-S	1	1	
18	HEEL BLOCK (LEFT HAND)	GTS-0358	16-6&22CP2-S	1	1	
19	BENT SPLICE BAR(4 HOLE) 100 LB. A.R.A. -A.	GTS-1204B	1204B	2	2	
20	STRAIGHT SPLICE BAR (4 HOLE) - 100 LB. A.R.A. -A.	GTS-1201	-	1	1	
21	SPRING WASHER for 1" DIA. BOLT	GTS-1301	-	8	8	
22	1" DIA. - 8 NC OVAL NECK TRACK BOLT X 12" LG. C/W SQ. NUT	GTS-1319/9	-	8	8	
23	PIPE THIMBLE - 1" DIA. X 2-1/32" LONG	GTS-345B	B	2	2	
24	1/4" COTTER PIN X 2" LG.	-	-	4	4	
25	SPRING WASHER for 1-1/8" DIA BOLT	GTS-1301	-	4	4	
26	1-1/8" DIA. - 7 UNC HEX HD. BOLT X 5" LG. C/W HEX NUT	GTS-1311/2	-	4	4	
27	ADJUSTABLE RAIL BRACE	GTS-0354	100M-7	12	12	
28	7/8" DIA. 9 UNC SQ. HD. BOLT X 3-3/4" LG.	GTS-1308/5	-	24	24	
29	SPRING WASHER for 7/8" DIA. BOLT	GTS-1301	-	24	24	
30	DOUBLE WASHER	GTS-0354	M-10	12	12	
31	DOUBLE NUT	GTS-0354	M-9	12	12	
32	PANDROL CLIP - PR 631A	GTS-1322	-	2	2	
33	DOUBLE SPRING WASHER - TYPE FE6	GTS-1310	-	16	16	
FROG						
34	#8-100 LB. RAIL BOUND MANGANESE STEEL FROG	R11C-164 .1	-	1	1	
FROG PACK						
35	HOOK TWIN TIE PLATE	GTS-0503	L23	9	9	
36	HOOK TWIN TIE PLATE	GTS-0503	LR27	2	2	
37	HOOK TWIN TIE PLATE	GTS-0503	L27	5	5	
38	HOOK TWIN TIE PLATE	GTS-0503	LR23J	2	2	
39	HOOK TWIN TIE PLATE	GTS-0503	L23J	2	2	
40	HOOK TWIN TIE PLATE	GTS-0503	LR27J	2	2	
41	HOOK TWIN TIE PLATE	GTS-0503	L27J	2	2	
42	STRAIGHT SPLICE BAR (4 HOLE) - 100 LB. A.R.A. -A.	GTS-1201	-	4	4	
43	SPRING WASHER for 1" DIA. BOLT	GTS-1301	-	16	16	
44	1" DIA. - 8 NC OVAL NECK TRACK BOLT X 5-5/8" LG. C/W SQ. NUT	GTS-1319/1	-	16	16	
GUARD RAIL PACK						
45	FROG GUARD RAIL 11' - 0" LONG	GTS-1106	-	2	2	
46	HOOK TWIN TIE PLATE	GTS-0503	L23	28	28	
47	SPRING WASHER for 1 - 1/4" DIA. BOLT	GTS-1301	-	10	10	
48	1-1/4" DIA. 7 UNC SQ. HD. BOLT X 9" LG. C/W SQ. NUT	GTS-1309/67	-	2	2	
49	1-1/4" DIA. 7 UNC SQ. HD. BOLT X 9 - 1/2" LG. C/W SQ. NUT	GTS-1309/68	-	4	4	
50	1-1/4" DIA. 7 UNC SQ. HD. BOLT X 10 - 1/2" LG. C/W SQ. NUT	GTS-1309/71	-	4	4	
51	HEAD WASHER	GTS-0836L	836L	10	10	
52	END CASTING LEFT HAND 100 LB. A.R.A.-A.	GTS-0846	CG2-S	2	2	
53	END CASTING RIGHT HAND 100 LB. A.R.A.-A.	GTS-0846	CG3-S	2	2	
54	TAIL WASHER (BEVELLED)	GTS-0836H	836H	8	8	
55	TAIL WASHER (NOT BEVELLED)	GTS-0836M	836M	2	2	
56	ADJUSTABLE BLOCK 100 LB. A.R.A. -A.	GTS-0846	CGI-S	4	4	
TURNOUT PACKAGES						
TURNOUT NUMBER	DESCRIPTION			QUANTITY PER TURNOUT		
GTS- 036A	FROG RBM 8-100			1		
	SW-PK INS 16-6 HO NO.			1		
	GR-PK 100 11-0			1		
	FR-PK RBM 8-100			1		
GTS- 036B	FROG RBM 8-100			1		
	SW-PK INS 16-6 HO NO.			1		
	GR-PK 100 11-0			1		
	FR-PK REM 8-100			1		
ABBREAVATIONS						
SW - PK - SWITCH PAK		SAM - SAMSON		SGM - SELF GUARD MANGANESE		
FR - PK - FROG PAK		HO - HAND OPERATED		RBM - RAIL BOUND MANGANESE		
GR - PK - GUARD RAIL PAK		SO - SPRING OPERATED				
INS - INSULATED		PO - POWER OPERATED				
NOTE: 1 - For a new installation, necessary rail, bonded insulated joints, splice bars, bolts, washers, rail anchors, connecting rod, switch stand, targe and reflectorized target kit may be required in addition to the materials listed above						
BILL OF SWITCH TIES FOR HAND AND SPRING OPERATION			BILL OF SWITCH FOR POWER OPERATION			
TIES 180 X 230 mm (7" X 9")			TIES 180 X 230 mm (7" X 9")			
LENGTH			LENGTH			
METRES	FEET/INCHES		NO. OF PIECES	METRES	FEET/INCHES	NO. OF PIECES
2.8	9' - 0"		16	2.8	9' - 0"	14
3.1	10' - 0"		9	3.1	10' - 0"	6
3.4	11' - 0"		6	3.4	11' - 0"	4
3.7	12' - 0"		6	3.7	12' - 0"	3
4	13' - 0"		4	4	13' - 0"	4
4.3	14' - 0"		5	4.3	14' - 0"	3
4.6	15' - 0"		5	4.6	15' - 0"	3
4.9	16' - 0"		6	4.9	16' - 0"	4
TOTAL NUMBER OF TIES - 57			TOTAL NUMBER OF TIES - 41			