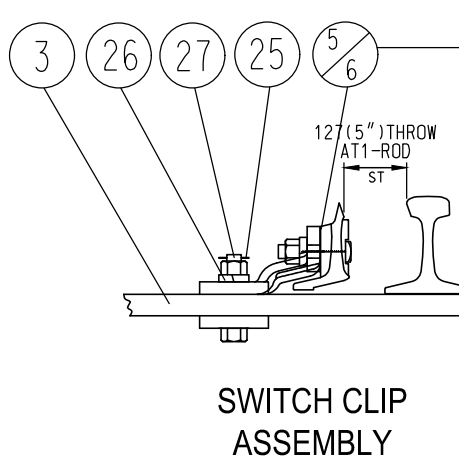
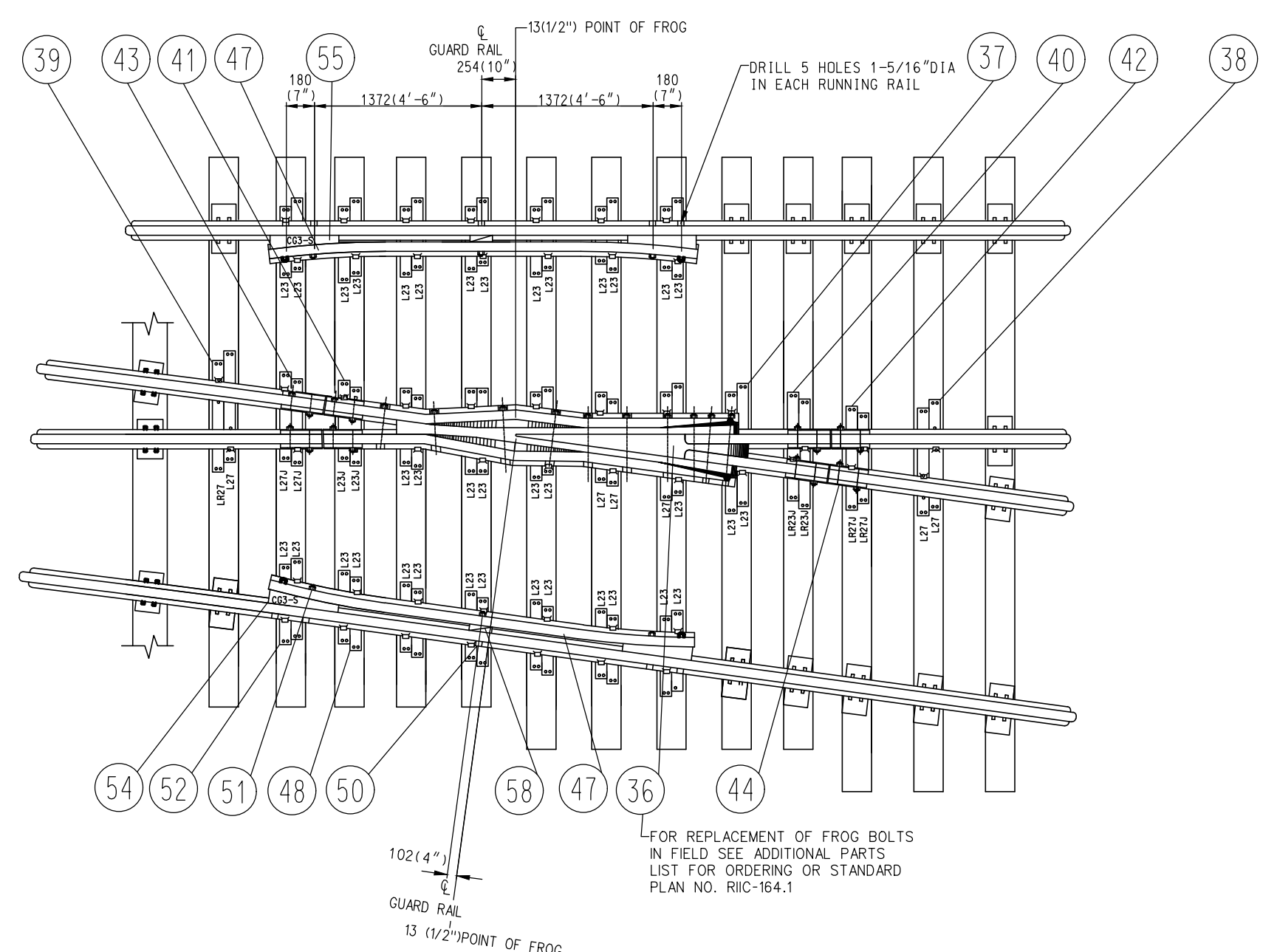
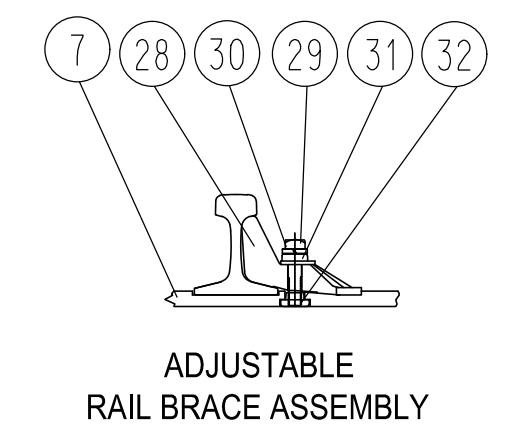


**GENERAL ARRANGEMENT**

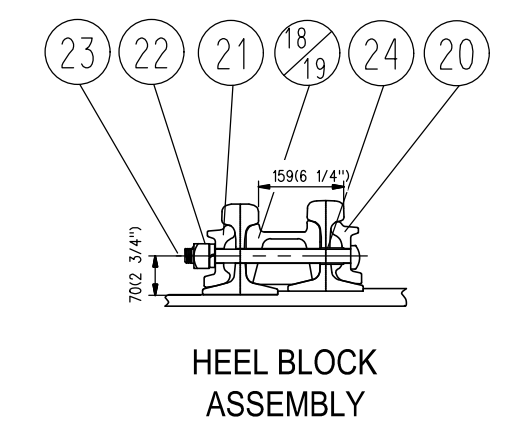
DRAWING NO GTS-0042 A  
RIGHT HAND TURNOUT



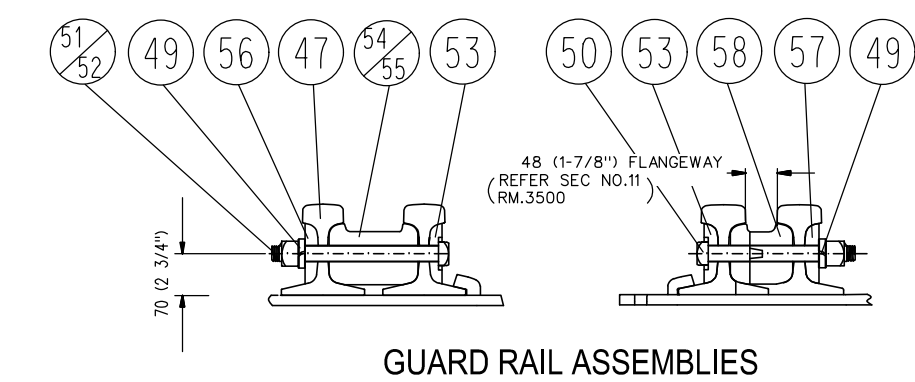
**SWITCH CLIP ASSEMBLY**



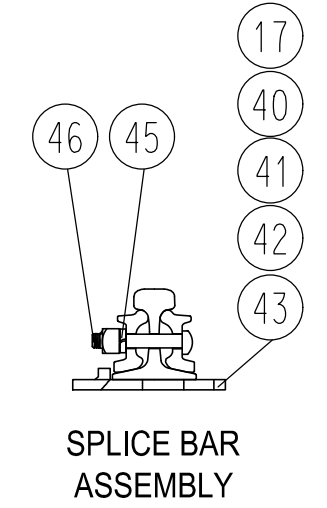
**ADJUSTABLE RAIL BRACE ASSEMBLY**



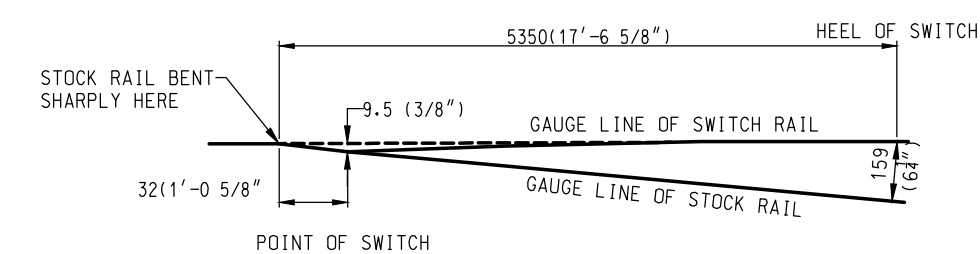
**HEEL BLOCK ASSEMBLY**



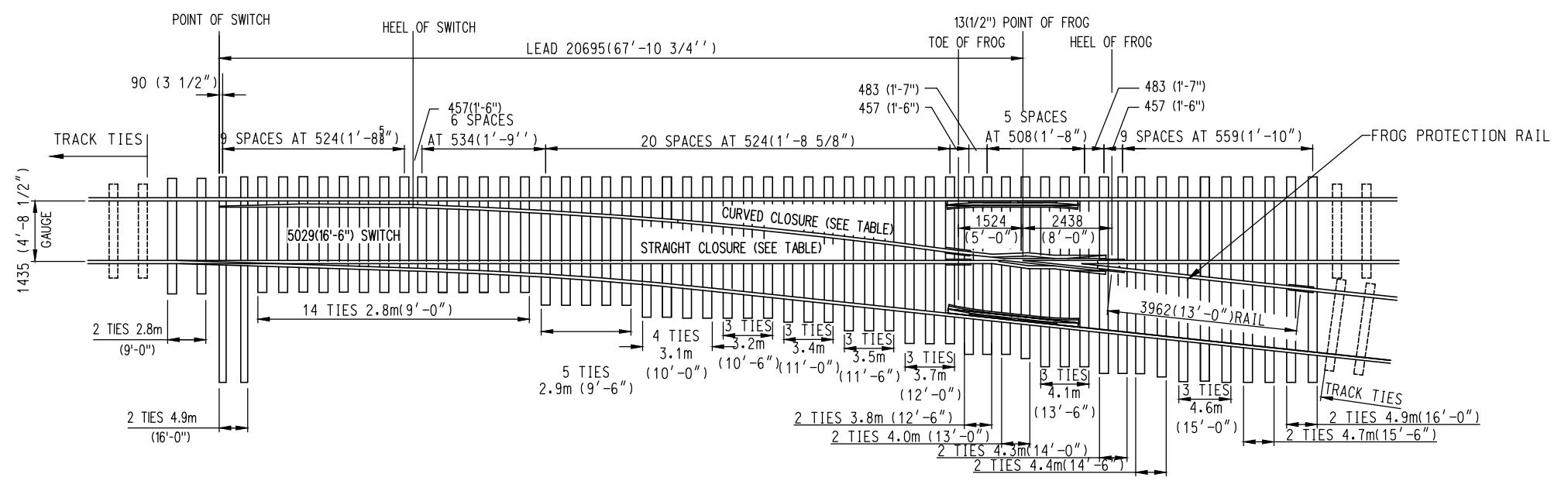
**GUARD RAIL ASSEMBLIES**



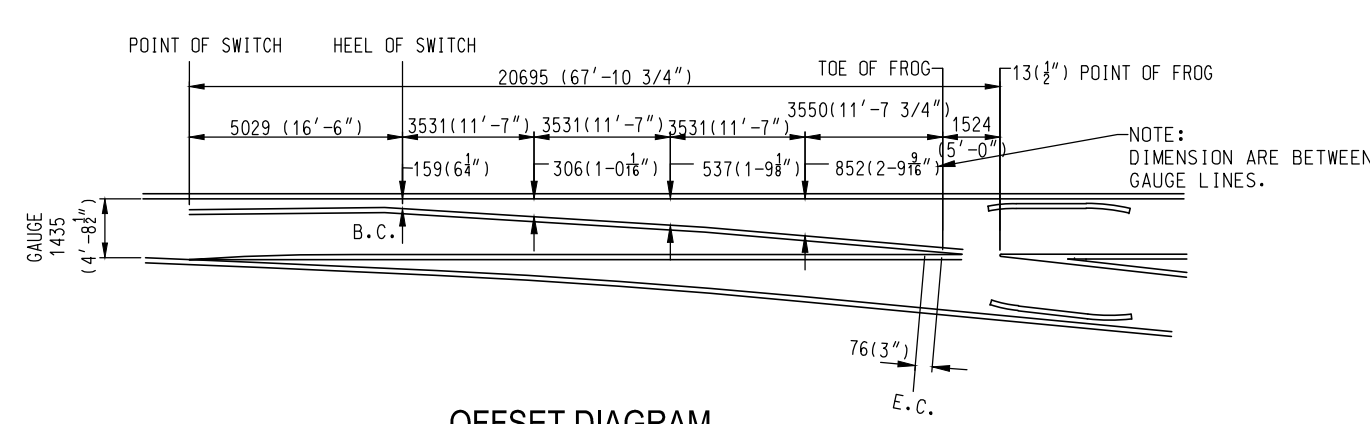
**SPLICE BAR ASSEMBLY**



**STOCK RAIL BENDING DETAIL**



**TIE ARRANGEMENT & SPACING**



**OFFSET DIAGRAM**

**TURNOUT DATA:**  
 FROG NO -----8  
 LENGTH OF SW.P.T.-----5029(16'-6'')  
 HEEL SPREAD-----159(6 1/4'')  
 LEAD-----20695(67'-10 3/4'')  
 PS TO H.F.-----22295(73'-1 3/4'')  
 14143(46'-4-3/4'') STRAIGHT CLOSURE LENGTH  
 MADE UP BY A14143(46'-4-3/4'') RAIL OR:  
 A10058(33') & 4085(13'-4-3/4'') RAIL  
 A9144(30') & 4999(16'-4-3/4'') RAIL  
 14205(46'-7-1/4'') CURVE CLOSURE LENGTH  
 MADE UP BY A 14205(46'-7-1/4'') RAIL OR:  
 A 10058(33') & 4147(13'-7-1/4'') RAIL  
 A 9144(30') & 5061(16'-7-1/4'') RAIL

**NOTES:**

- TURNOUT TO BE INSTALLED AND MAINTAINED IN ACCORDING WITH THE LATEST ISSUE OF:  
 RM.3500 TURNOUTS  
 RM.3502 POWER, SPRING AND INSTALLED SWITCH  
 RM.3506 SWITCH STAND, SWITCH LAMPS AND TARGETS, WHERE APPLICABLE
- WHEN REFERRING TO MANUAL TURNOUTS, DRAWING NUMBER MUST BE STATED AS "A" OR "B" TO INDICATE:  
 A-RIGHT HAND TURNOUT(ILLUSTRATED)  
 B-LEFT HAND TURNOUT
- FOR GENERAL ARRANGEMENT OF SWITCH STAND & CONNECTING ROD SEE GTS0701 AND GTS-0702.
- FOR THE VARIOUS STANDARD TURNOUT COMBINATIONS SEE INDEX SHEET GTS-0
- TURNOUT GEOMETRY, FOR TABLES OF DIMENSIONS AND OFFSETS SEE GTS-1

**METRIC CONVERSION: 1 inch=25.4mm, 1 foot=304.8mm**

No.	18/07/27	ADDED IMPERIAL TO METRIC CONVERSION NOTE	By Approved
Standard		NO. 8 TURNOUT-16'6" POINTS INSULATED - SAMSON POINTS R.B.M. FROG - 100LB. A.R.A.A. RAIL	
Drawn	MG	Checked	GGG
Approved		VP Engineering & Asset Management	
Date	DEC 15, 2017	Plan Number	GTS-0042
Rev		1	

**BILL OF MATERIALS FOR GTS-0042**

ITEM	DESCRIPTION	STANDARD DRAWING	MARK NO.	QUANTITY	
				A	B
<b>SWITCH PACK</b>					
1	1st. GAUGE PLATE C/W INSULATION PLATE 100/132	GTS-0521	GP60/GP60	1	1
2	2nd. GAUGE PLATE C/W INSULATION PLATE 100/132	GTS-0521	GP65/GP61	1	-
-	2nd. GAUGE PLATE C/W INSULATION PLATE 100/132	GTS-0521	GP61/GP62	-	1
3	SWITCH ROD	GTS-0341A	341A	1	1
4	SWITCH ROD	GTS-0341D	341D	1	1
5	RIGHT SAMSON POINT RAIL	GTS-0309A	309A	-	1
	RIGHT POINT RAIL	GTS-0306A	306A	1	-
6	LEFT SAMSON POINT RAIL	GTS-0309B	309B	1	-
	LEFT POINT RAIL	GTS-0306B	306B	-	1
7	SWITCH PLATE	GTS-0508	SP300	8	8
8	SWITCH PLATE	GTS-0509	SP301	10	10
9	SWITCH PLATE	GTS-0504	SP123	2	2
10	SWITCH PLATE	GTS-0507	SP151	2	2
11	SWITCH PLATE	GTS-0507	SP152	2	2
12	SWITCH PLATE	GTS-0506	SP153	2	2
13	HOOK TWIN TIE PLATE	GTS-0503	LR27	8	8
14	HOOK TWIN TIE PLATE	GTS-0503	L27	8	8
15	HOOK TWIN TIE PLATE	GTS-0503	LR31	4	4
16	HOOK TWIN TIE PLATE	GTS-0503	L31	3	3
17	HOOK TWIN TIE PLATE	GTS-0503	L31J	1	1
18	HEEL BLOCK(RIGHT HAND)	GTS-0358	16-6&22CP1-S	1	1
19	HEEL BLOCK (LEFT HAND)	GTS-0358	16-6&22CP2-S	1	1
20	BENT SPLICE BAR(4 HOLE) 100 LB A.R.A. -A.	GTS-1204B	1204B	2	2
21	STRAIGHT SPLICE BAR (4 HOLE) - 100 LB. A.R.A. -A.	GTS-1201	-	1	1
22	SPRING WASHER for 1" DIA. BOLT	GTS-1301	-	8	8
23	1"DIA. - 8 NC OVAL NECK TRACK BOLT X 12" LG. C/W SQ. NUT	GTS-1319/9	-	8	8
24	PIPE THIMBLE - 1" DIA. X 2-1/32" LONG	GTS-345B	B	2	2
25	1/4" COTTER PIN X 2" LG.	-	-	4	4
26	SPRING WASHER for 1-1/8" DIA BOLT	GTS-1301	-	4	4
27	1-1/8" DIA. - 7 UNC HEX HD. BOLT X 5" LG. C/W HEX NUT	GTS-1311/2	-	4	4
28	ADJUSTABLE RAIL BRACE	GTS-0354	100M-7	12	12
29	7/8" DIA. 9 UNC SQ. HD. BOLT X 3-3/4" LG.	GTS-1308/5	-	24	24
30	SPRING WASHER for 7/8" DIA. BOLT	GTS-1301	-	24	24
31	DOUBLE WASHER	GTS-0354	M-10	12	12
32	DOUBLE NUT	GTS-0354	M-9	12	12
33	UNDERCUT STOCK RAIL - 100 LB. A.R.A.-A. 39' - 0" LG.	GTS-1105A	1105A	1	1
34	PANDROL CLIP - PR 631A	GTS-1322	-	2	2
35				16	16
	DOUBLE SPRING WASHER - TYPE FE6	GTS-1310	-	16	16
<b>FROG</b>					
36	#8-100 LB. RAIL BOUND MANGANESE STEEL FROG	R11C-164 .1	-	1	1
<b>FROG PACK</b>					
37	HOOK TWIN TIE PLATE	GTS-0503	L23	9	9
38	HOOK TWIN TIE PLATE	GTS-0503	LR27	2	2
39	HOOK TWIN TIE PLATE	GTS-0503	L27	5	5
40	HOOK TWIN TIE PLATE	GTS-0503	LR23J	2	2
41	HOOK TWIN TIE PLATE	GTS-0503	L23J	2	2
42	HOOK TWIN TIE PLATE	GTS-0503	LR27J	2	2
43	HOOK TWIN TIE PLATE	GTS-0503	L27J	2	2
44	STRAIGHT SPLICE BAR (4 HOLE) - 100 LB. A.R.A. -A.	GTS-1201	-	4	4
45	SPRING WASHER for 1" DIA. BOLT	GTS-1301	-	16	16
46	1" DIA. - 8 NC OVAL NECK TRACK BOLT X 5-5/8" LG. C/W SQ. NUT	GTS-1319/1	-	16	16
<b>GUARD RAIL PACK</b>					
47	FROG GUARD RAIL 11' - 0" LONG	GTS-1106	-	2	2
48	HOOK TWIN TIE PLATE	GTS-0503	L23	28	28
49	SPRING WASHER for 1 - 1/4" DIA. BOLT	GTS-1301	-	10	10
50	1-1/4" DIA. 7 UNC SQ. HD. BOLT X 9" LG. C/W SQ. NUT	GTS-1309/67	-	2	2
51	1-1/4" DIA. 7 UNC SQ. HD. BOLT X 9 - 1/2" LG. C/W SQ. NUT	GTS-1309/68	-	4	4
52	1-1/4" DIA. 7 UNC SQ. HD. BOLT X 10 - 1/2" LG. C/W SQ. NUT	GTS-1309/71	-	4	4
53	HEAD WASHER	GTS-0836L	836L	10	10
54	END CASTING LEFT HAND 100 LB. A.R.A.-A.	GTS-0846	CG2-S	2	2
55	END CASTING RIGHT HAND 100 LB. A.R.A.-A.	GTS-0846	CG3-S	2	2
56	TAIL WASHER (BEVELLED)	GTS-0836H	836H	8	8
57	TAIL WASHER (NOT BEVELLED)	GTS-0836M	836M	2	2
58	ADJUSTABLE BLOCK 100 LB. A.R.A. -A.	GTS-0846	CGI-S	4	4
<b>TURNOUT PACKAGES</b>					
<b>TURNOUT NUMBER</b>	<b>DESCRIPTION</b>	<b>QUANTITY PER TURNOUT</b>			
GTS- 042A	FROG RBM 8-100	1			
	SW-PK INS SAMSON HO NO. 8A - 100 LBS.	1			
	GR-PK 100 11'-0"	1			
	FR-PK RBM 8-100	1			
GTS- 042B	FROG RBM 8-100	1			
	SW-PK INS SAMSON HO NO. 8B - 100 LBS.	1			
	GR-PK 100 11'-0"	1			
	FR-PK RBM 8-100	1			
<b>ABBREAVATIONS</b>					
SW - PK - SWITCH PAK		SAM - SAMSON	SGM - SELF GUARD MANGANESE		
FR - PK - FROG PAK		HO - HAND OPERATED	RBM - RAIL BOUND MANGANESE		
GR - PK - GUARD RAIL PAK		SO - SPRING OPERATED			
INS - INSULATED		PO - POWER OPERATED			
NOTE:					
1 - For a new installation, necessary rail, bonded insulated joints, splice bars, bolts, washers, rail anchors, connecting rod, switch stand, targe and reflectorized target kit may be required in addition to the materials listed above					
<b>BILL OF SWITCH TIES FOR HAND AND SPRING OPERATION</b>			<b>BILL OF SWITCH FOR POWER OPERATION</b>		
TIES 180 X 230 mm (7" X 9")			TIES 180 X 230 mm (7" X 9")		
LENGTH			LENGTH		
METRES	FEET/INCHES	NO. OF PIECES	METRES	FEET/INCHES	NO. OF PIECES
2.8	9' - 0"	16	2.8	9' - 0"	14
3.1	10' - 0"	9	3.1	10' - 0"	6
3.4	11' - 0"	6	3.4	11' - 0"	4
3.7	12' - 0"	6	3.7	12' - 0"	3
4	13' - 0"	4	4	13' - 0"	4
4.3	14' - 0"	5	4.3	14' - 0"	3
4.6	15' - 0"	5	4.6	15' - 0"	3
4.9	16' - 0"	6	4.9	16' - 0"	4
TOTAL NUMBER OF TIES - 57			TOTAL NUMBER OF TIES - 41		