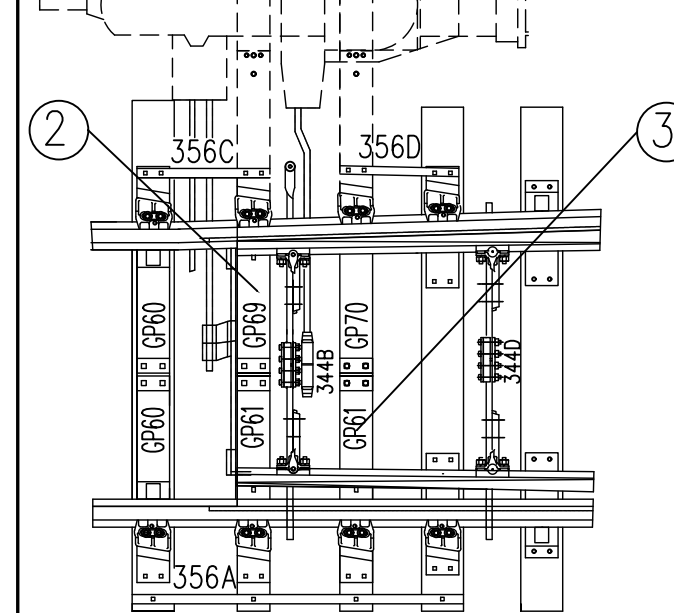


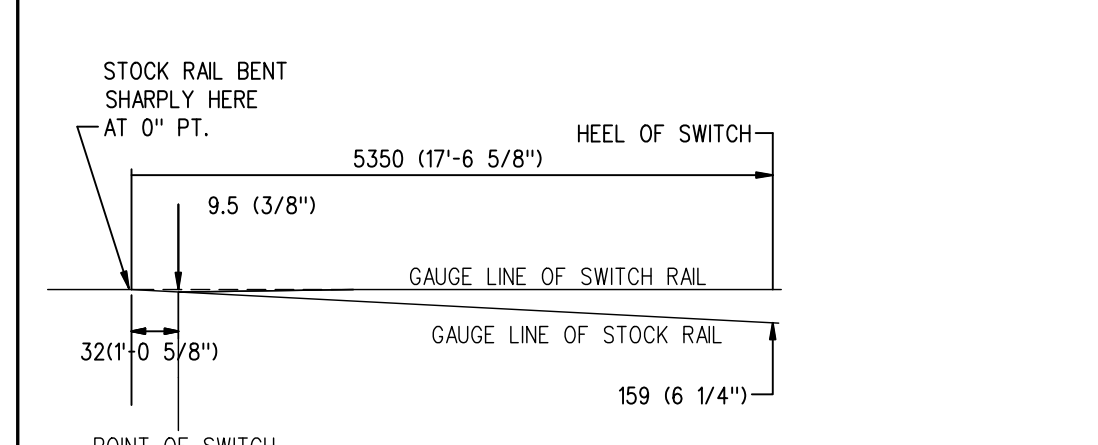
GENERAL ARRANGEMENT
DRAWING NO. GTS-0047 A
RIGHT HAND TURNOUT
MACHINE MOUNTED ON RIGHT



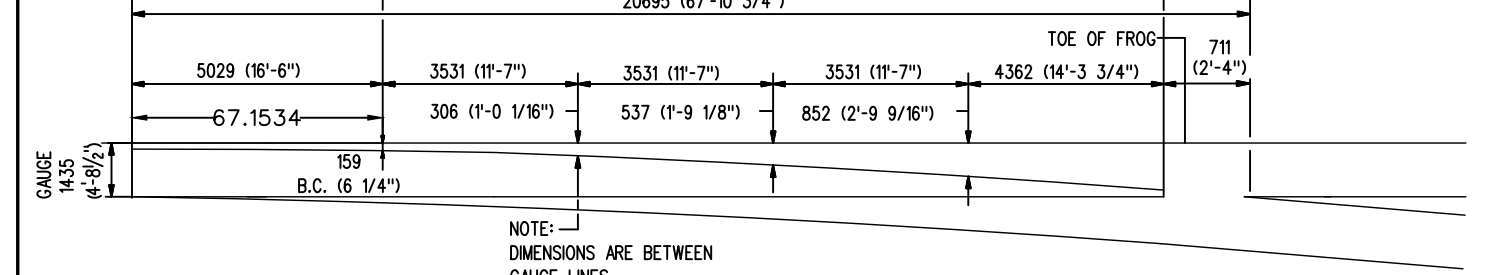
DRAWING NO. GTS-0047 C
LEFT HAND TURNOUT
MACHINE MOUNTED ON RIGHT



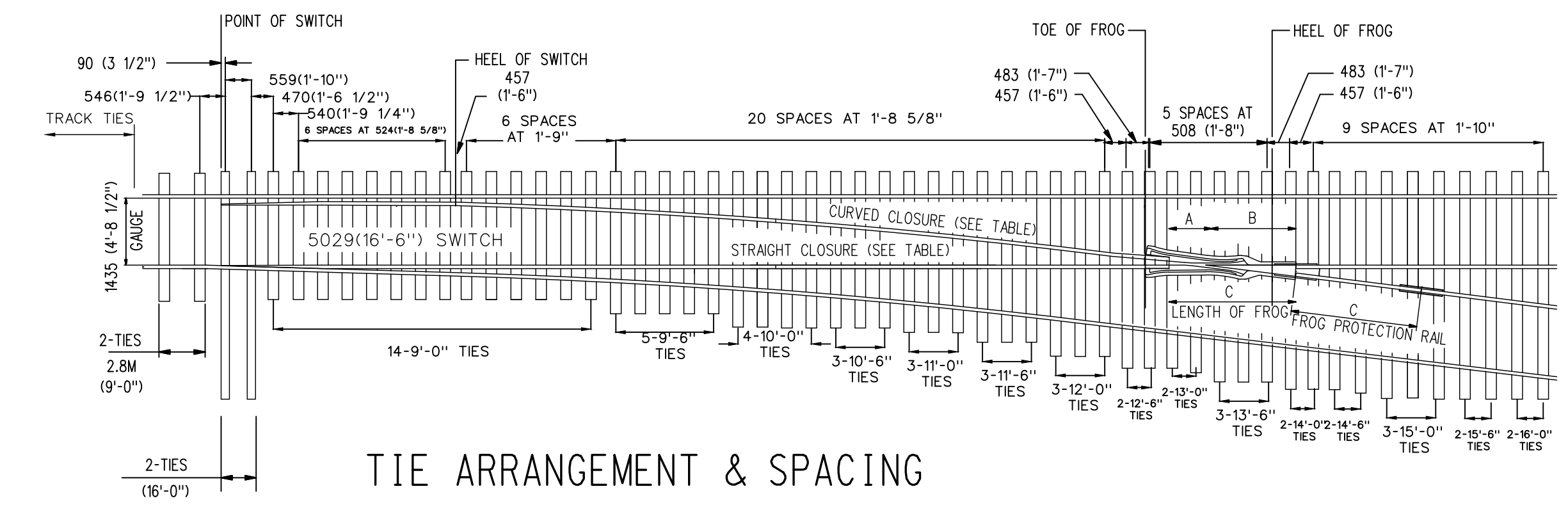
DRAWING NO. GTS-0047 D
LEFT HAND TURNOUT
MACHINE MOUNTED ON LEFT



STOCK RAIL BENDING DETAIL



OFFSET DIAGRAM

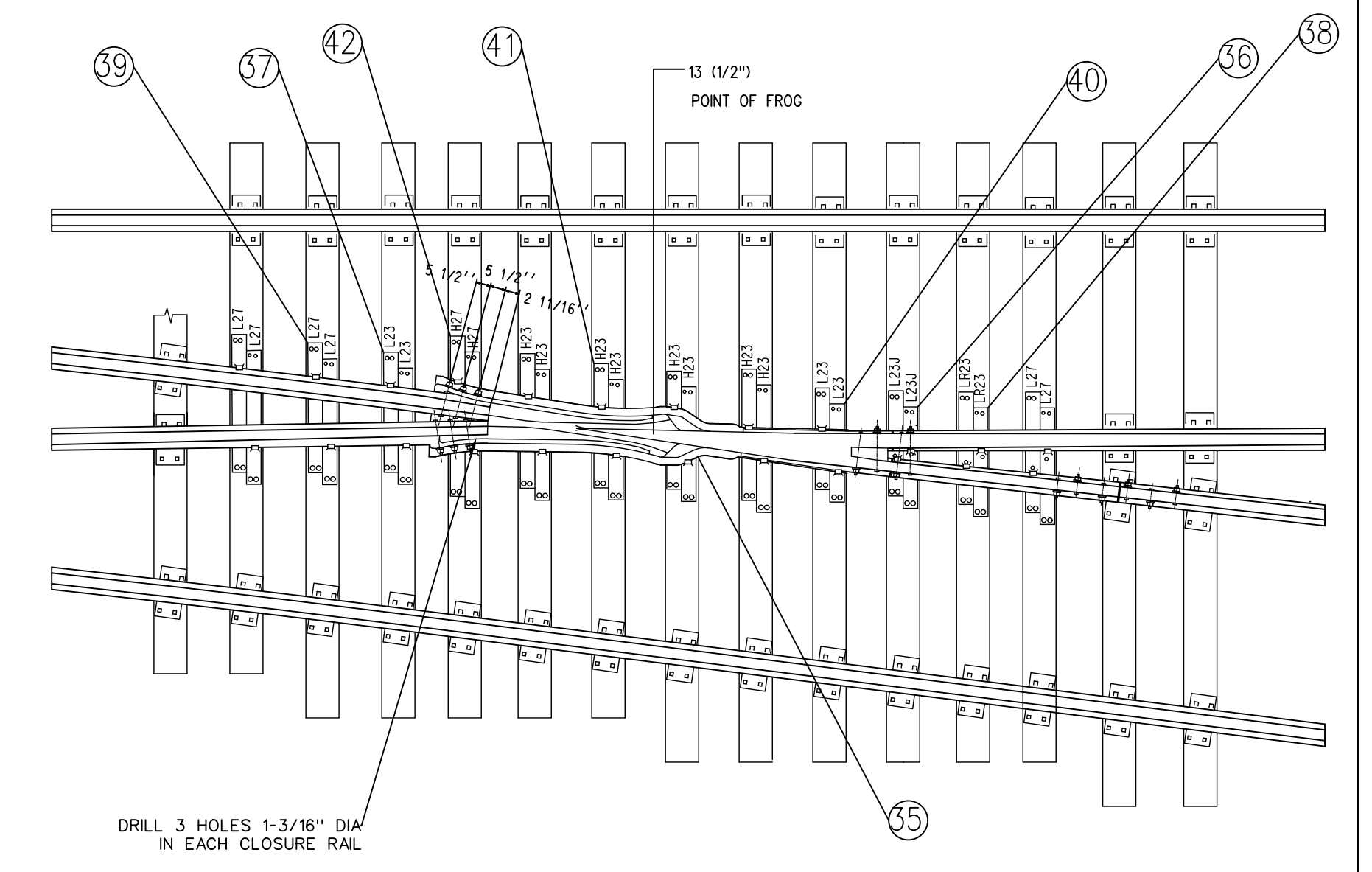


TIE ARRANGEMENT & SPACING

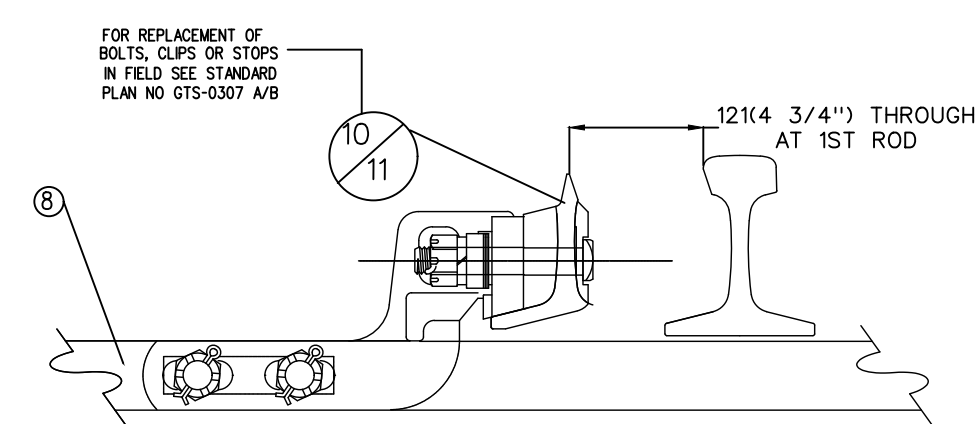
TURNOUT DATA:

FROG NO -----8
 LENGTH OF SW.P.T.-----5029(16'-6'')
 HEEL SPREAD-----159(6 1/4'')
 LEAD-----20695(67'-10 3/4'')
 PS TO H.F.-----22295(73'-1 3/4'')

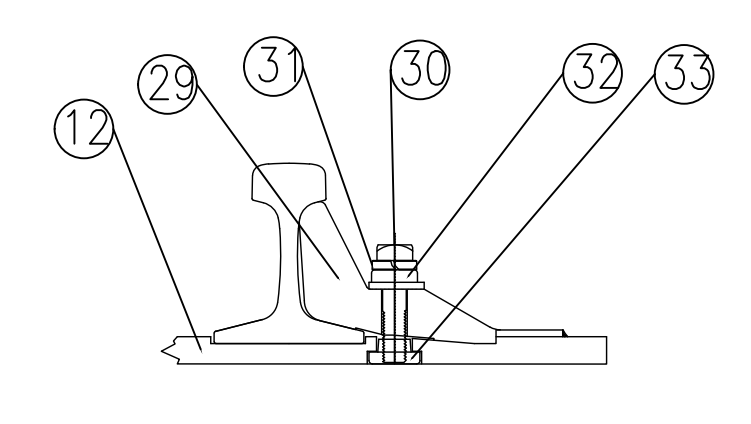
14954(49'-0 3/4'') STRAIGHT CLOSURE LENGTH
 MADE UP BY A 14954(49'-0 3/4'') RAIL OR:
 A 10058(33') AND 4896(16'-0 3/4'') RAIL
 A 9144(30') AND 5810(19'-0 3/4'') RAIL
 15018(49'-3 1/4'') CURVE CLOSURE LENGTH
 MADE UP BY A 15018(49'-3 1/4'') RAIL OR:
 A 10058(33') AND 4960(16'-3 1/4'') RAIL
 A 9144(30') AND 5874(19'-3 1/4'') RAIL



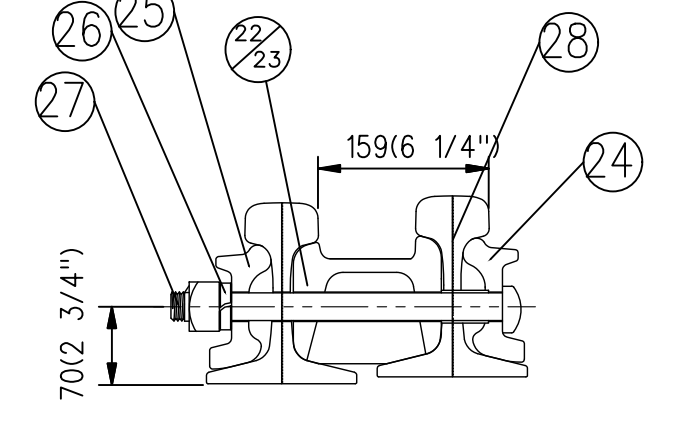
HEEL OF FROG ASSEMBLY



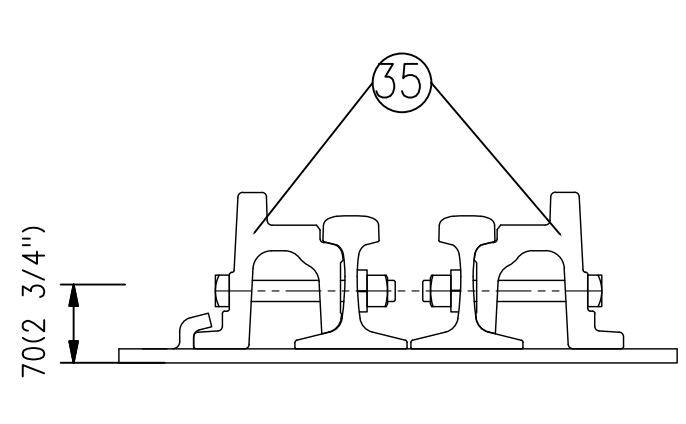
"MJ" CLIP ASSEMBLY



ADJUSTABLE
RAIL BRACE ASSEMBLY



HEEL BLOCK
ASSEMBLY



TOE OF FROG ASSEMBLY

NOTES

- TURNOUT TO BE INSTALLED AND MAINTAINED IN ACCORDING WITH THE LATEST ISSUE OF: RM.3500 TURNOUTS RM.3502 POWER, SPRING AND INSTALLED SWITCH RM.3506 SWITCH STAND, SWITCH LAMPS AND TARGETS, WHERE APPLICABLE
- WHEN REFERRING TO POWER OPERATED TURNOUTS, DRAWING NUMBER MUST BE STATED AS A, B,C OR D:
 A-RIGHT HAND TURNOUT P.O. MACHINE ON RIGHT
 B-RIGHT HAND TURNOUT P.O. MACHINE ON LEFT
 C-LEFT HAND TURNOUT P.O. MACHINE ON RIGHT
 D-LEFT HAND TURNOUT P.O. MACHINE ON LEFT
- FOR THE VARIOUS STANDARD TURNOUT COMBINATIONS SEE INDEX SHEET GTS-0
- TURNOUT GEOMETRY, FOR TABLES OF DIMENSIONS AND OFFSETS SEE GTS-1

METRIC CONVERSION: 1 inch=25.4mm, 1 foot=304.8mm

1	18/07/27	ADDED IMPERIAL TO METRIC CONVERSION NOTE	
No.	Date	Revision	By Approved
Standard		NO. 8 TURNOUT-16'6" POINTS POWER OPERATED S.G.M. FROG 100LB. A.R.A.A. RAIL	
Drawn	MG	Checked	GGG
Approved		Approved <i>[Signature]</i> Vp Engineering & Asset Management	
Date	DEC 15, 2017	Plan Number	GTS-0047
Rev	1		
REFERENCE: TS-47 A/D		Sheet 1 OF 1	

