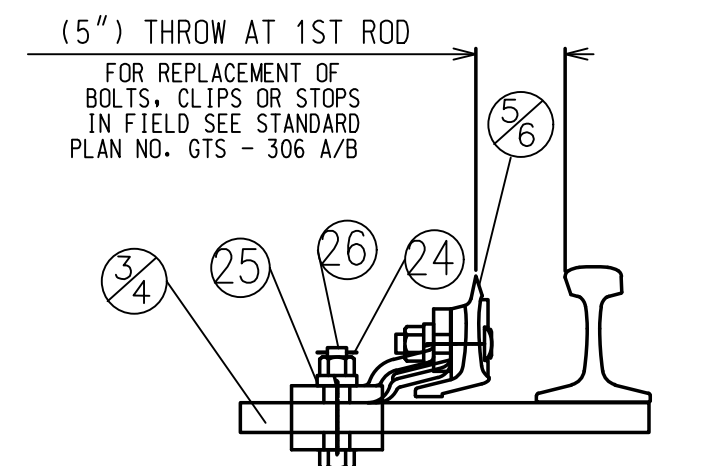
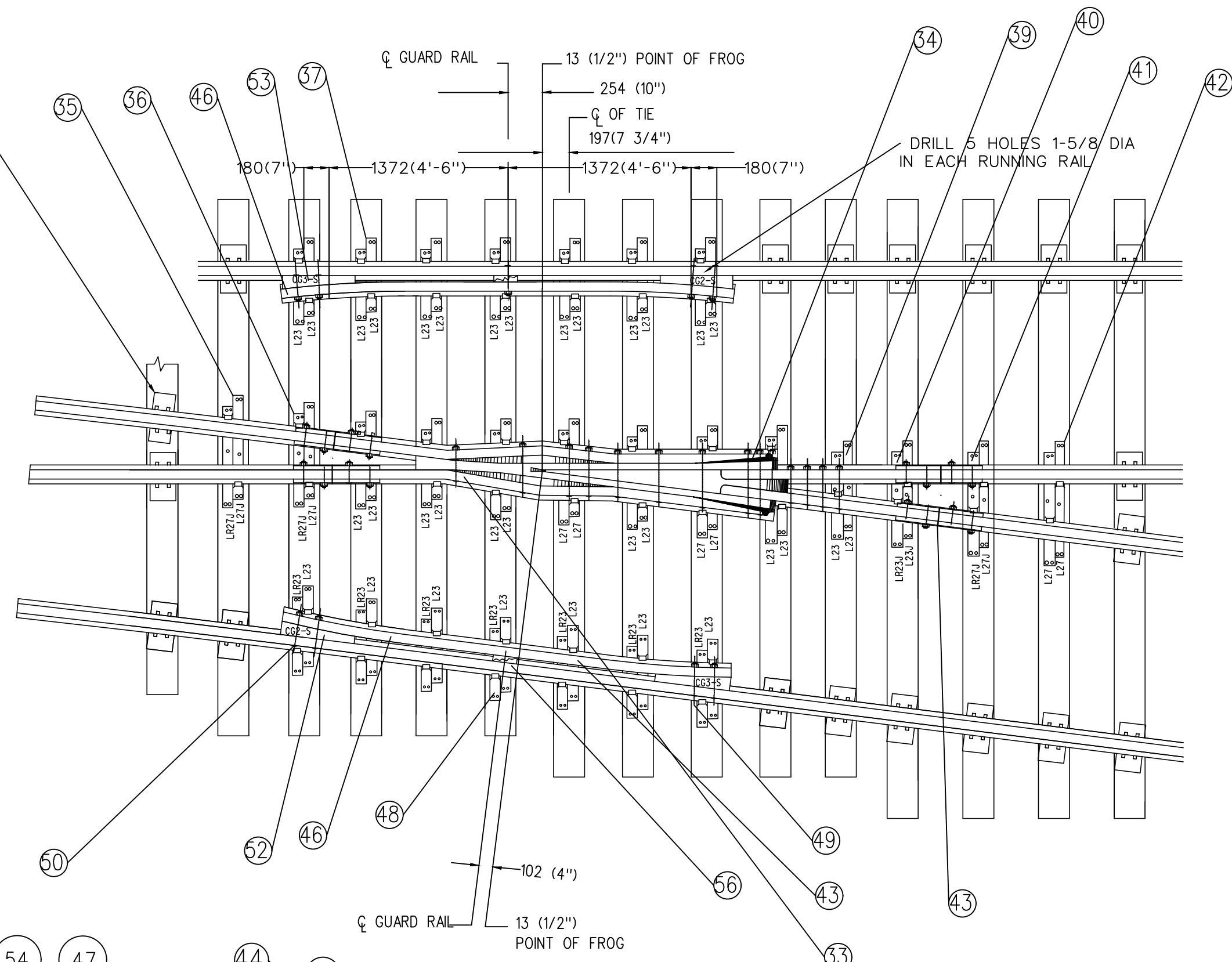
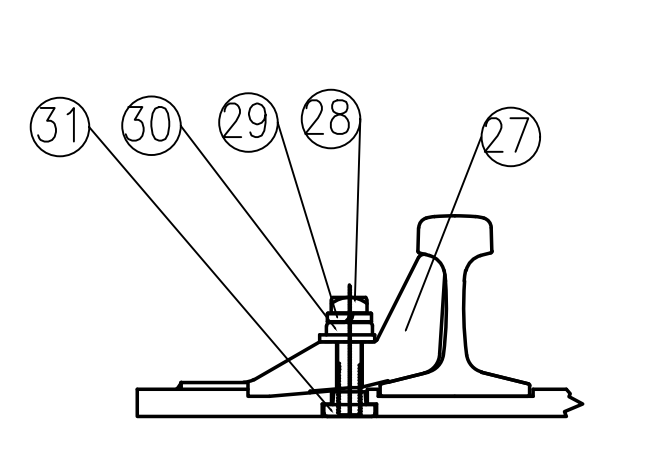


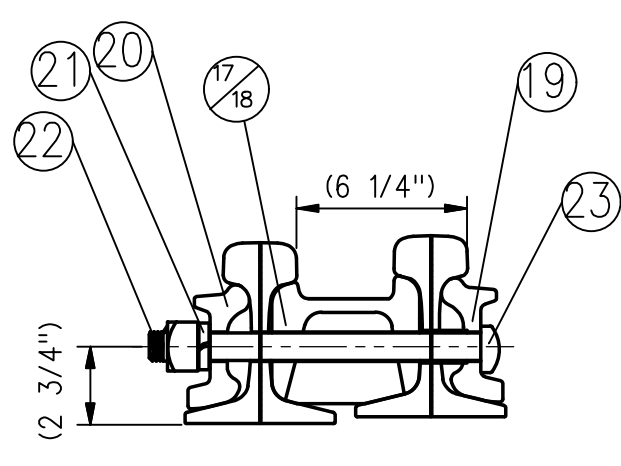
GENERAL ARRANGEMENT
DRAWING NO GTS-0095 A
RIGHT HAND TURNOUT



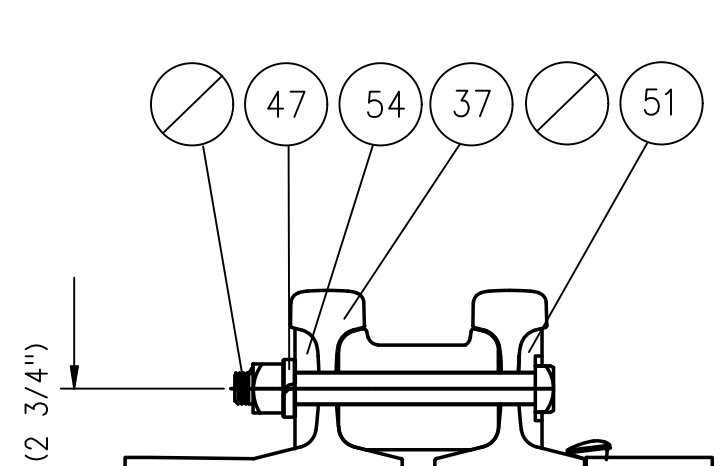
SWITCH CLIP ASSEMBLY



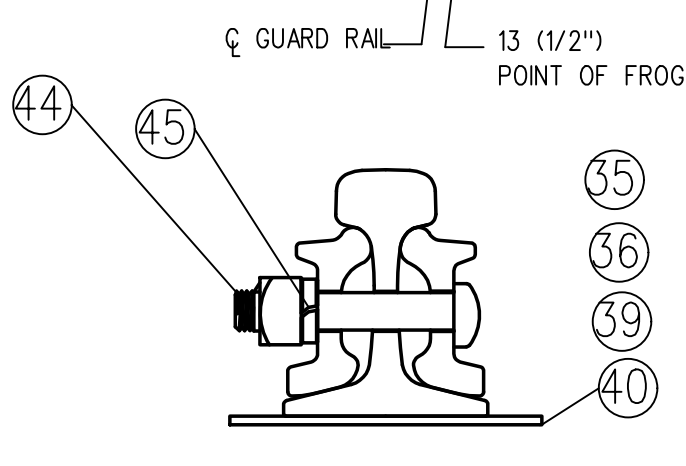
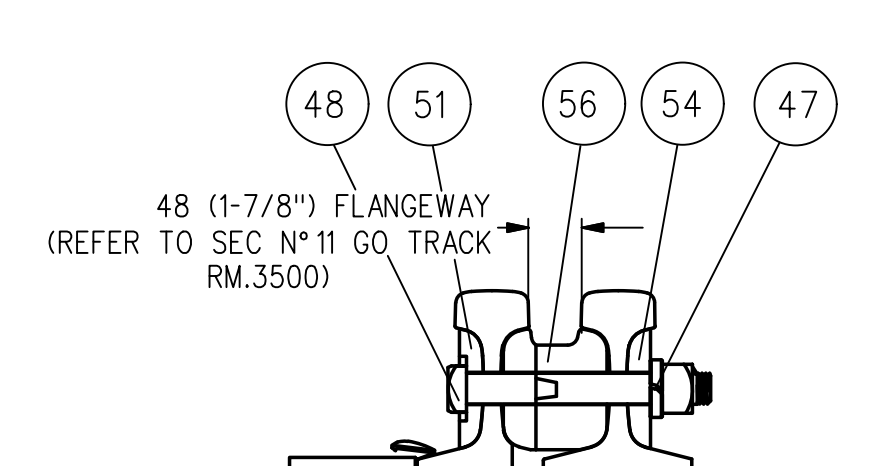
ADJUSTABLE RAIL BRACE ASSEMBLY



HEEL BLOCK ASSEMBLY



GUARD RAIL ASSEMBLIES



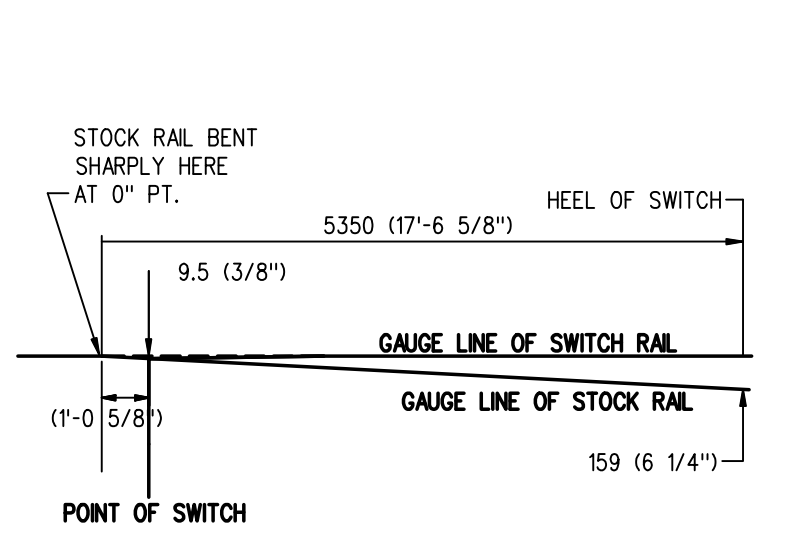
SPLICE BAR ASSEMBLY

FOR REPLACEMENT OF FROG BOLTS IN FIELD SEE ADDITIONAL PARTS LIST FOR ORDERING OR STANDARD PLAN NO. RIIC-164.1

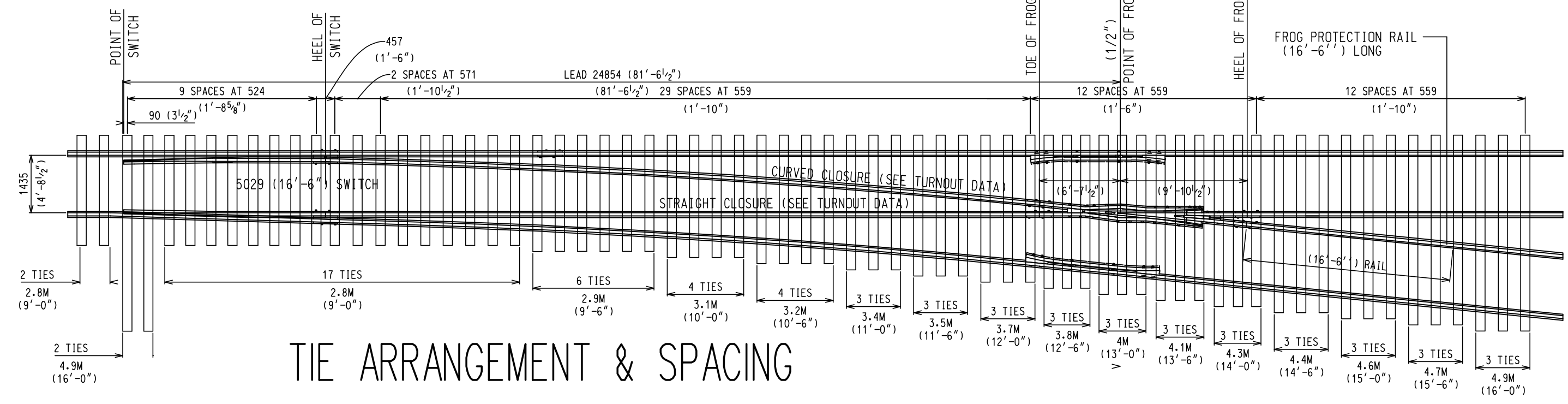
TURNOUT DATA:
 FROG NO -----10
 LENGTH OF SWITCH-----16'-6"
 HEEL SPREAD-----6 1/4"
 LEAD-----81'-6 1/2"
 PS TO H.F.-----91'-5"

58'-5" STRAIGHT CLOSURE LENGTH
 MADE UP BY A 58'-5" RAIL OR:
 A 39' AND 19'-5" RAIL
 A 36' AND 22'-5" RAIL
 A 33' AND 25'-5" RAIL
 A 30' AND 28'-5" RAIL

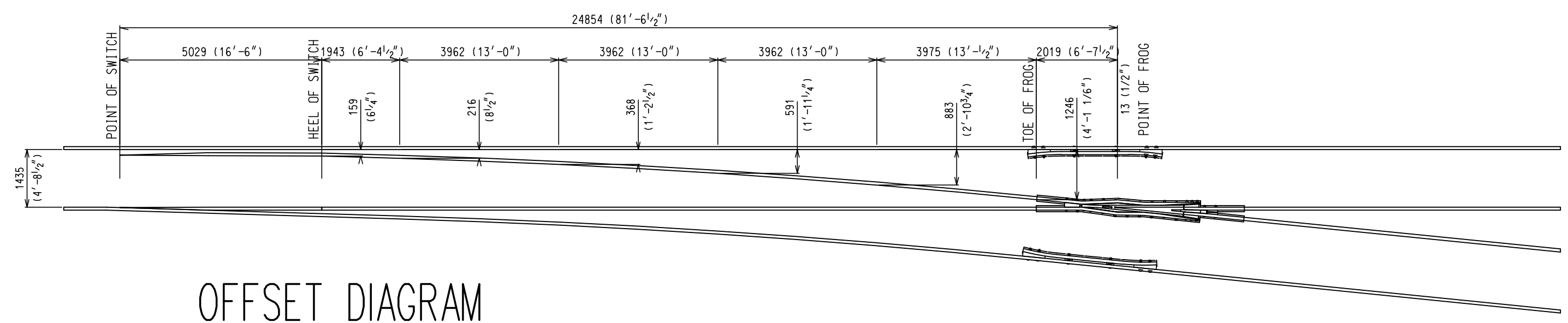
58'-7" CURVE CLOSURE LENGTH
 MADE UP BY A 58'-7" RAIL OR:
 A 39' AND 19'-7" RAIL
 A 36' AND 22'-7" RAIL
 A 33' AND 25'-7" RAIL
 A 30' AND 28'-7" RAIL



STOCK RAIL BENDING DETAIL



TIE ARRANGEMENT & SPACING



OFFSET DIAGRAM

NOTES

- 1- FOR BILL OF MATERIAL, SEE REVERSE SIDE
- 2- TURNOUT TO BE INSTALLED ACCORDING TO RM-3500, LATEST ISSUE.
- 3- FOR OTHER GENERAL ARRANGEMENT TURNOUT DRAWINGS, SEE INDEX DRAWING GTS-0
- 4- WHEN REFERRING TO TURNOUTS, DRAWING NUMBER MUST BE STATED AS A OR B TO INDICATE RIGHT OR LEFT HAND TURNOUT.
 A: RIGHT HAND TURNOUT
 B: LEFT HAND TURNOUT
- 5- FOR GENERAL ARRANGEMENT OF SWITCH STAND SEE DRAWING GTS-701

METRIC CONVERSION: 1 inch=25.4mm, 1 foot=304.8mm

No.	Date	Revision	By Approved
1	18/07/27	REVISED PDF VERSION ESTABLISHED	
Standard			
NO. 10 TURNOUT NON-INSULATED R.B.M FROG 100LB. A.R.A.A. RAIL			
Drawn	MG	Checked	GGG
		Approved	<i>[Signature]</i>
METROLINX			
Date	DEC 15, 2017	Plan Number	GTS-0095
		Rev	1
REFERENCE: TS-95 A/B			Sheet 1 OF 1

BILL OF MATERIALS FOR GTS-0095

ITEM	DESCRIPTION	STANDARD DRAWING	MARK NO.	QUANTITY	
				A	B
SWITCH PACK					
1	1st. GAUGE PLATE	GTS-0520	G301	1	1
2	2nd. GAUGE PLATE	GTS-0520	G305R	1	-
	2nd. GAUGE PLATE	GTS-0520	G305L	-	1
3	SWITCH ROD	GTS-0340A	340A	1	1
4	SWITCH ROD	GTS-0340D	340D	1	1
5	RIGHT POINT RAIL	GTS-0306A	306A	1	1
6	LEFT POINT RAIL	GTS-0306B	306B	1	1
7	SWITCH PLATE	GTS-0508	SP300	8	8
8	SWITCH PLATE	GTS-0509	SP301	10	10
9	SWITCH PLATE	GTS-0504	SP123	2	2
10	SWITCH PLATE	GTS-0507	SP151	2	2
11	SWITCH PLATE	GTS-0507	SP157	2	2
12	SWITCH PLATE	GTS-0506	SP158	2	2
13	HOOK TWIN TIE PLATE	GTS-0503	LR27	8	8
14	HOOK TWIN TIE PLATE	GTS-0503	L27	8	8
15	HOOK TWIN TIE PLATE	GTS-0503	LR31	4	4
16	HOOK TWIN TIE PLATE	GTS-0503	L31	4	4
17	HEEL BLOCK (RIGHT HAND)	GTS-0358	16-6&22CP1-S	1	1
18	HEEL BLOCK (LEFT HAND)	GTS-0358	16-6&22CP2-S	1	1
19	BENT SPLICE BAR (4 HOLE) - 100 LB A.R.A.-A.	GTS-1204B	1204B	2	2
20	STRAIGHT SPLICE BAR (4 HOLE) - 100 LB A.R.A.-A.	GTS-1201	-	1	1
21	SPRING WASHER for 1" DIA. BOLT	GTS-1301	-	24	24
22	1" DIA. 8 NC OVAL NECK TRACK BOLT X 12" LG. C/W SQ. NUT	GTS-1319/9	-	8	8
23	PIPE THIMBLE - 1" DIA. X 2-1/32" LONG	GTS-0345B	B	2	2
24	1/4" COTTER PIN X 2" LG.	-	-	4	4
25	SPRING WASHER for 1 - 1/8" DIA BOLT	GTS-1301	-	4	4
26	1-1/8" DIA. 7 UNC HEX HD. BOLT X 5" LG. C/W HEX NUT	GTS-1311/2	-	4	4
27	ADJUSTABLE RAIL BRACE	GTS-0354	100M-7	12	12
28	7/8" DIA. - 9 UNC SQ. HD. BOLT X 3-3/4" LG.	GTS-1308/5	-	24	24
29	SPRING WASHER for 7/8" DIA. BOLT	GTS-1301	-	24	24
30	DOUBLE WASHER	GTS-0354	M-10	12	12
31	DOUBLE NUT	GTS-0354	M-9	12	12
32	1" DIA. - 8 NC OVAL NECK TRACK BOLT X 5-5/8" LG. C/W SQ. NUT	GTS-1319/1	-	16	16
FROG					
32	#10 - 100 LB. RAIL BOUND MANGANESE STEEL FROG	R11C-170.1	-	1	1
FROG PACK					
34	HOOK TWIN TIE PLATE	GTS-0503	L27	6	6
35	HOOK TWIN TIE PLATE	GTS-0543	L27J	2	2
36	HOOK TWIN TIE PLATE	GTS-0544	L23J	2	2
37	HOOK TWIN TIE PLATE	GTS-0545	L23	12	12
38	HOOK TWIN TIE PLATE	GTS-0503	LR23	2	2
39	HOOK TWIN TIE PLATE	GTS-0503	LR23J	2	2
40	HOOK TWIN TIE PLATE	GTS-0503	LR27J	2	2
41	HOOK TWIN TIE PLATE	GTS-0503	LR27	2	2
42	HOOK TWIN TIE PLATE	GTS-0503	LR31	2	2
43	STRAIGHT SPLICE BAR (4 HOLE) - 100 LB A.R.A.-A.	GTS-1201	-	4	4
44	1" DIA. 8 NC OVAL NECK TRACK BOLT X 5-5/8" LG. C/W SQ. NUT	GTS-1319/1	-	16	16
45	SPRING WASHER for 1" DIA. BOLT	GTS-1301	-	16	16
GUARD RAIL PACK					
46	FROG GUARD RAIL 11' - 0" LONG	GTS-1106	-	2	2
47	SPRING WASHER for 1 - 1/4" DIA BOLT	GTS-1301	-	10	10
48	1-1/4" DIA. 7 UNC SQ. HD. BOLT X 9" LG. C/W SQ. NUT	GTS-1309/67	-	2	2
49	1-1/4" DIA. 7 UNC SQ. HD. BOLT X 9-1/2" LG. C/W SQ. NUT	GTS-1309/68	-	4	4
50	1-1/4" DIA. 7 UNC SQ. HD. BOLT X 10-1/2" LG. C/W SQ. NUT	GTS-1309/71	-	4	4
51	HEAD WASHER	GTS-0836L	836L	10	10
52	END CASTING RIGHT HAND 100 LB. A.R.A.-A.	GTS-0846	CG2-S	2	2
53	END CASTING LEFT HAND 100 LB. A.R.A.-A.	GTS-0846	CG3-S	2	2
54	TAIL WASHER (BEVELLED)	GTS-0836H	836H	8	8
55	TAIL WASHER (NOT BEVELLED)	GTS-0836M	836M	2	2
56	ADJUSTABLE BLOCK 100 LB. A.R.A.-A.	GTS-0846	CG1-S	4	4
TURNOUT PACKAGES					
TURNOUT NUMBER	DESCRIPTION	QUANTITY PER TURNOUT			
GTS- 095A	FROG RBM 10-100	1			
	SW-PK NON - INS HO NO. 10A-100 LBS.	1			
	GR-PK 100 11'-0"	1			
	FR-PK SPRING 10-100	1			
GTS- 095B	FROG RBM 10-100	1			
	SW-PK NON - INS HO NO. 10B-100 LBS.	1			
	GR-PK 100 11'-0"	1			
	FR-PK SPRING 10-100	1			
ABBREAVATIONS					
SW - PK - SWITCH PAK		SAM - SAMSON		SGM - SELF GUARD MANGANESE	
FR - PK - FROG PAK		HO - HAND OPERATED		RBM - RAIL BOUND MANGANESE	
GR - PK - GUARD RAIL PAK		SO - SPRING OPERATED			
INS - INSULATED		PO - POWER OPERATED			
NOTE:					
1 - For a new installation, necessary rail, bonded insulated joints, splice bars, bolts, washers, rail anchors, connecting rod, switch stand, targe and reflectorized target kit may be required in addition to the materials listed above					
BILL OF SWITCH TIES FOR HAND AND SPRING OPERATION			BILL OF SWITCH FOR POWER OPERATION		
TIES 180 X 230 mm (7" X 9")			TIES 180 X 230 mm (7" X 9")		
LENGTH			LENGTH		
METRES	FEET/INCHES	NO. OF PIECES	METRES	FEET/INCHES	NO. OF PIECES
2.8	9' - 0"	19	2.8	9' - 0"	14
3.1	10' - 0"	10	3.1	10' - 0"	6
3.4	11' - 0"	7	3.4	11' - 0"	5
3.7	12' - 0"	6	3.7	12' - 0"	5
4	13' - 0"	6	4	13' - 0"	4
4.3	14' - 0"	6	4.3	14' - 0"	4
4.6	15' - 0"	6	4.6	15' - 0"	5
4.9	16' - 0"	8	4.9	16' - 0"	5
TOTAL NUMBER OF TIES - 68			TOTAL NUMBER OF TIES - 48		