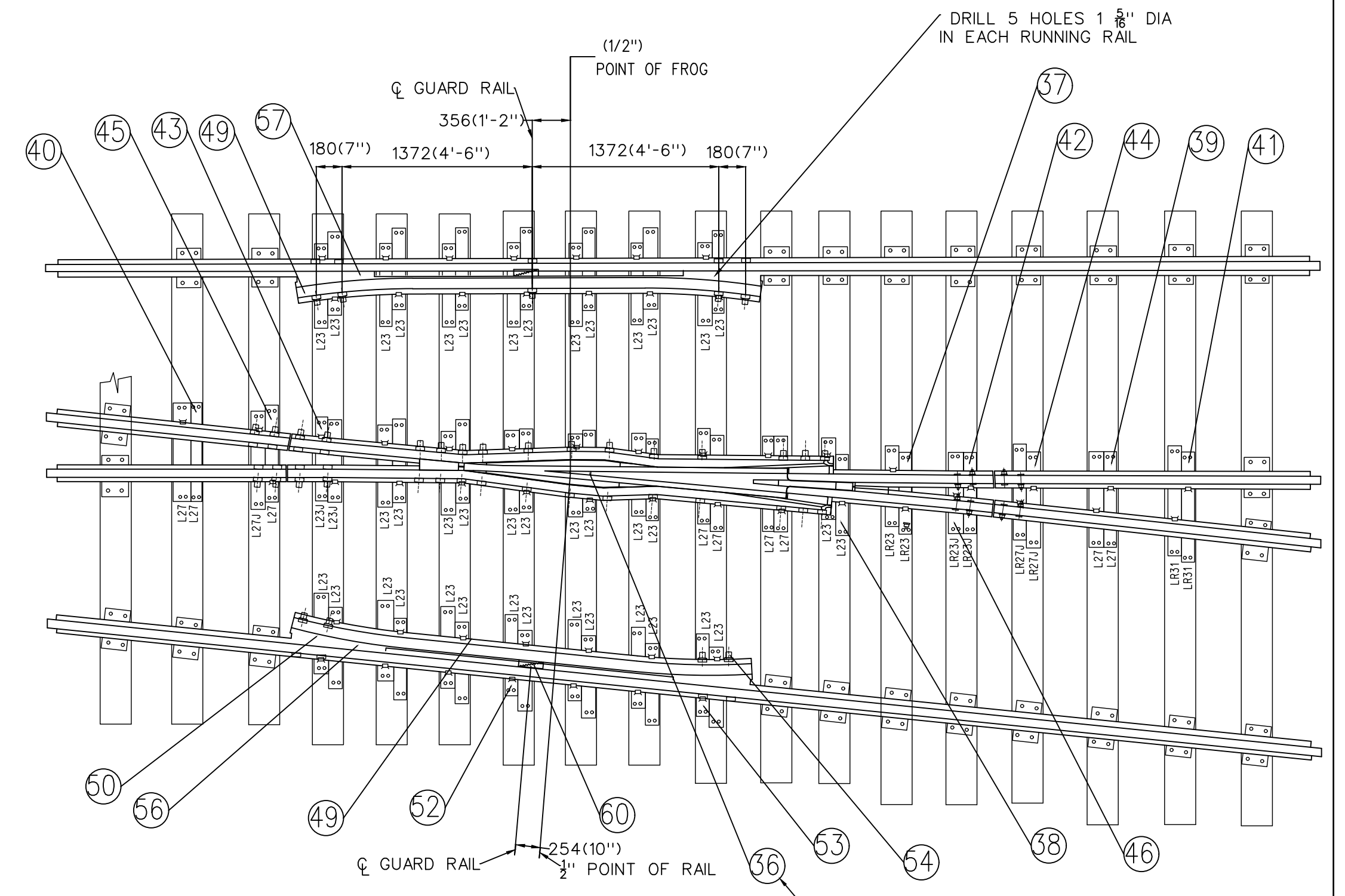
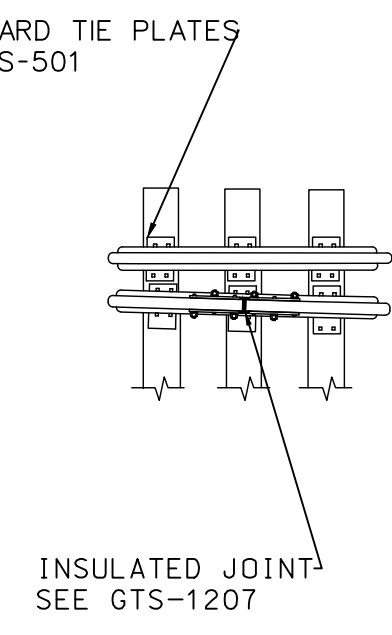
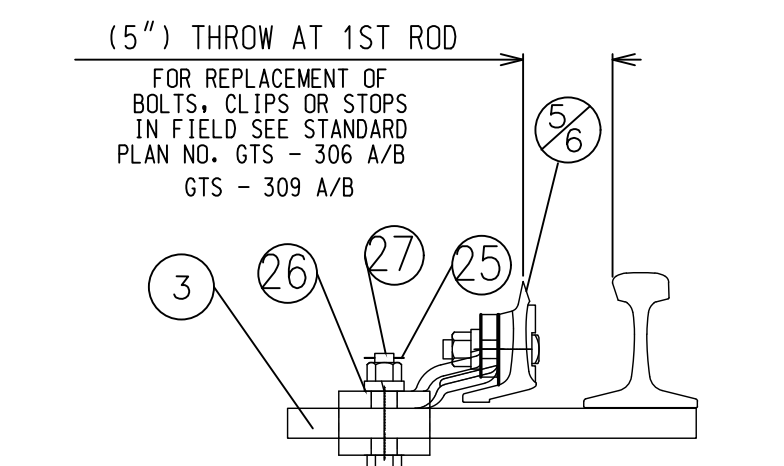


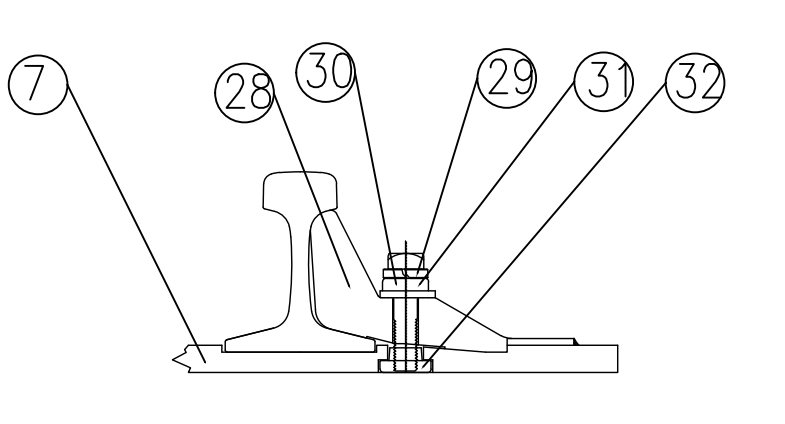
GENERAL ARRANGEMENT
DRAWING NO GTS-0107 A
RIGHT HAND TURNOUT



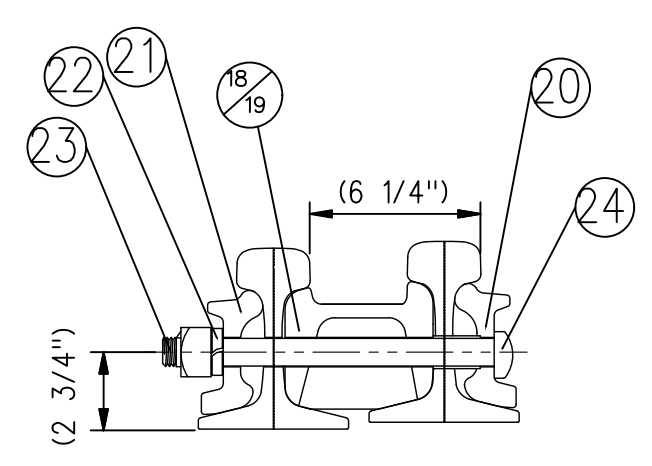
FOR REPLACEMENT OF FROG BOLTS
IN FIELD SEE STANDARD PLAN NO RIC.1



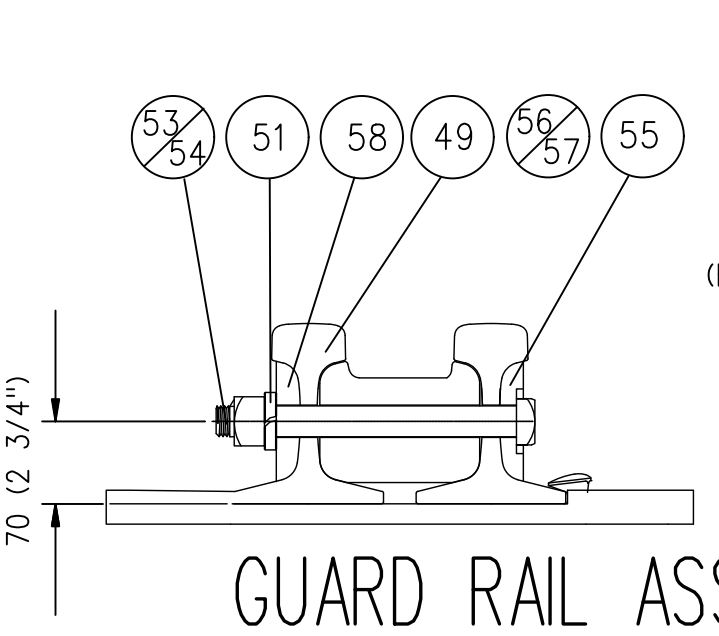
SWITCH CLIP ASSEMBLY



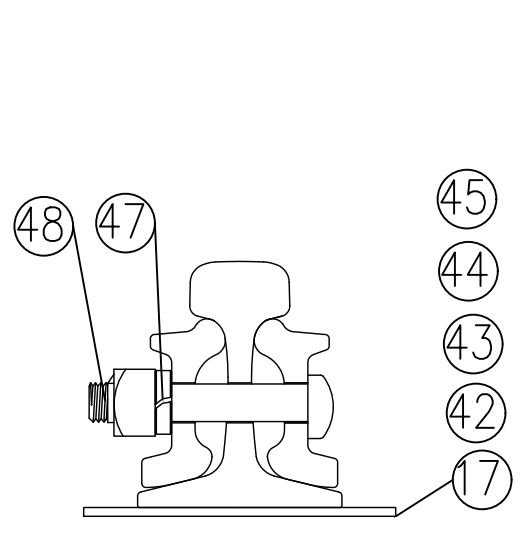
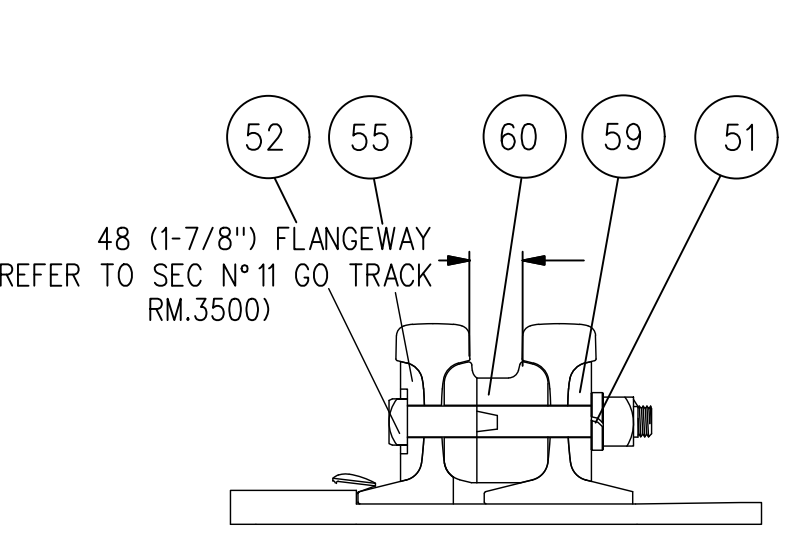
ADJUSTABLE RAIL BRACE ASSEMBLY



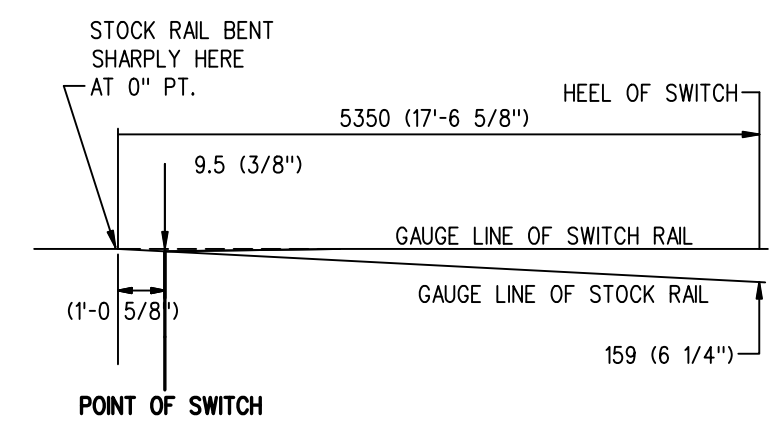
HEEL BLOCK ASSEMBLY



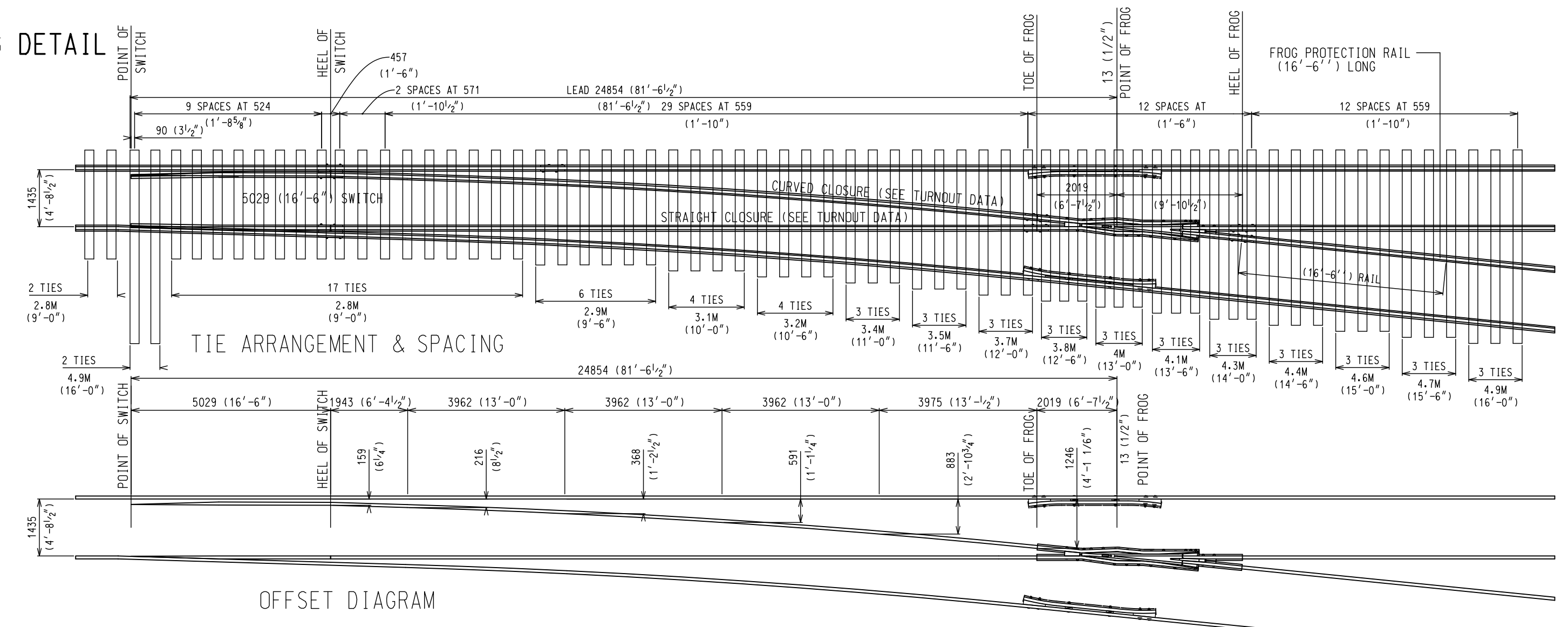
GUARD RAIL ASSEMBLIES



SPLICE BAR ASSEMBLY



STOCK RAIL BENDING DETAIL



TURNOUT DATA:
FROG NO -----10
LENGTH OF SWITCH-----16'-6"
HEEL SPREAD-----6 1/4"
LEAD-----81'-6 1/2"
PS TO H.F.-----91'-5"

58'-5" STRAIGHT CLOSURE LENGTH
MADE UP BY A 58'-5" RAIL OR:
A 39' AND 19'-5" RAIL
A 36' AND 22'-5" RAIL
A 33' AND 25'-5" RAIL
A 30' AND 28'-5" RAIL

58'-7" CURVE CLOSURE LENGTH
MADE UP BY A 58'-7" RAIL OR:
A 39' AND 19'-7" RAIL
A 36' AND 22'-7" RAIL
A 33' AND 25'-7" RAIL
A 30' AND 28'-7" RAIL

NOTES

- 1- TURNOUT TO BE INSTALLED AND MAINTAINED IN ACCORDING WITH THE LATEST ISSUE OF: RM.3500 TURNOUTS RM.3502 POWER, SPRING AND INSTALLED SWITCH RM.3506 SWITCH STAND, SWITCH LAMPS AND TARGETS, WHERE APPLICABLE
- 2- WHEN REFERRING TO MANUAL TURNOUTS, DRAWING NUMBER MUST BE STATED AS A OR B: A-RIGHT HAND TURNOUT B-LEFT HAND TURNOUT
- 3- FOR GENERAL ARRANGEMENT OF SWITCH & CONNECTING ROD SEE GTS-0701 AND GTS-0702
- 4- FOR THE VARIOUS STANDARD TURNOUT COMBINATIONS SEE INDEX SHEET GTS-0
- 5- TURNOUT GEOMETRY, FOR TABLES OF DIMENSIONS AND OFFSETS SEE GTS-1

METRIC CONVERSION: 1 inch=25.4mm, 1 foot=304.8mm

1	18/07/27	ADDED IMPERIAL TO METRIC CONVERSION NOTE	
No.	Date	Revision	By Approved
Standard		NO. 10 TURNOUT-16'-6" POINTS INSULATED- SAMSON POINTS R.B.M FROG-100LB. A.R.A.A. RAIL	
Drawn	MG	Checked	GGG
		Approved	<i>[Signature]</i> Vp Engineering & Asset Management
Date	DEC 15, 2017	Plan Number	GTS-0107 Rev 1
REFERENCE: TS-107 A/B		Sheet 1 OF 1	

BILL OF MATERIALS FOR GTS-0107

ITEM	DESCRIPTION	STANDARD DRAWING	MARK NO.	QUANTITY	
				A	B
SWITCH PACK					
1	1st. GAUGE PLATE C/W INSULATION PLATE 100/132	GTS-0521	GP60/GP60	1	1
2	2nd. GAUGE PLATE C/W INSULATION PLATE 100/132	GTS-0521	GP65/GP61	1	-
	2nd. GAUGE PLATE C/W INSULATION PLATE 100/132	GTS-0521	GP61/GP62	-	1
3	SWITCH ROD	GTS-0341A	341A	1	1
4	SWITCH ROD	GTS-0341D	341D	1	1
5	RIGHT SAMSON POINT RAIL	GTS-0309A	309A	-	1
	RIGHT POINT RAIL	GTS-0306A	306A	1	-
6	LEFT SAMSON POINT RAIL	GTS-0309B	309B	1	-
	LEFT POINT RAIL	GTS-0306B	306B	-	1
7	SWITCH PLATE	GTS-0508	SP300	8	8
8	SWITCH PLATE	GTS-0509	SP301	10	10
9	SWITCH PLATE	GTS-0504	SP123	2	2
10	SWITCH PLATE	GTS-0507	SP151	2	2
11	SWITCH PLATE	GTS-0507	SP157	2	2
12	SWITCH PLATE	GTS-0506	SP158	2	2
13	HOOK TWIN TIE PLATE	GTS-0503	LR27	8	8
14	HOOK TWIN TIE PLATE	GTS-0503	L27	8	8
15	HOOK TWIN TIE PLATE	GTS-0503	LR31	4	4
16	HOOK TWIN TIE PLATE	GTS-0503	L31	3	3
17	HOOK TWIN TIE PLATE	GTS-0503	L31J	1	1
18	HEEL BLOCK (RIGHT HAND)	GTS-0358	16-6&22CP1-S	1	1
19	HEEL BLOCK (LEFT HAND)	GTS-0358	16-6&22CP2-S	1	1
20	BENT SPLICE BAR (4 HOLE) - 100 LB A.R.A.-A.	GTS-1204B	1204B	2	2
21	STRAIGHT SPLICE BAR (4 HOLE) - 100 LB A.R.A.-A.	GTS-1201	-	1	1
22	SPRING WASHER for 1" DIA. BOLT	GTS-1301	-	8	8
23	1" DIA. 8 NC OVAL NECK TRACK BOLT X 12" LG. C/W SQ. NUT	GTS-1319/9	-	8	8
24	PIPE THIMBLE - 1" DIA. X 2-1/32" LONG	GTS-345B	B	2	2
25	1/4" COTTER PIN X 2" LG.	-	-	4	4
26	SPRING WASHER for 1 - 1/8" DIA BOLT	GTS-1301	-	4	4
27	1-1/8" DIA. 7 UNC HEX HD. BOLT X 5" LG. C/W HEX NUT	GTS-1311/2	-	4	4
28	ADJUSTABLE RAIL BRACE	GTS-0354	100M-7	12	12
29	7/8" DIA. - 9 UNC SQ. HD. BOLT X 3-3/4" LG.	GTS-1308/5	-	24	24
30	SPRING WASHER for 7/8" DIA. BOLT	GTS-1301	-	24	24
31	DOUBLE WASHER	GTS-0354	M-10	12	12
32	DOUBLE NUT	GTS-0354	M-9	12	12
33	UNDERCUT STOCK RAIL - 100 LB. A.R.A.-A. 39' - 0" LG.	GTS-1105A	1105A	1	1
34	PANDROL CLIP - PR 631A	GTS-1322	-	2	2
35	DOUBLE SPRING WASHER - TYPE FE6	GTS-1310	-	16	16
FROG					
36	#10 - 100 LB. RAIL BOUND MANGANESE STEEL FROG	R11C-170.1	-	1	1
FROG PACK					
37	HOOK TWIN TIE PLATE	GTS-0503	LR23	2	2
38	HOOK TWIN TIE PLATE	GTS-0543	L23	12	12
39	HOOK TWIN TIE PLATE	GTS-0544	LR27	2	2
40	HOOK TWIN TIE PLATE	GTS-0545	L27	6	6
41	HOOK TWIN TIE PLATE	GTS-0503	LR31	2	2
42	HOOK TWIN TIE PLATE	GTS-0503	LR23J	2	2
43	HOOK TWIN TIE PLATE	GTS-0503	L23J	2	2
44	HOOK TWIN TIE PLATE	GTS-0503	LR27J	2	2
45	HOOK TWIN TIE PLATE	GTS-0503	L27J	2	2
46	STRAIGHT SPLICE BAR (4 HOLE) - 100 LB A.R.A.-A.	GTS-1201	-	4	4
47	SPRING WASHER for 1" DIA. BOLT	GTS-1301	-	16	16
48	1" DIA. 8 NC OVAL NECK TRACK BOLT X 5-5/8" LG. C/W SQ. NUT	GTS-1319/1	-	16	16
GUARD RAIL PACK					
49	FROG GUARD RAIL 11' - 0" LONG	GTS-1106	-	2	2
50	HOOK TWIN TIE PLATE	GTS-0503	L23	28	28
51	SPRING WASHER for 1 - 1/4" DIA BOLT	GTS-1301	-	10	10
52	1-1/4" DIA. 7 UNC SQ. HD. BOLT X 9" LG. C/W SQ. NUT	GTS-1309/67	-	2	2
53	1-1/4" DIA. 7 UNC SQ. HD. BOLT X 9-1/2" LG. C/W SQ. NUT	GTS-1309/68	-	4	4
54	1-1/4" DIA. 7 UNC SQ. HD. BOLT X 10-1/2" LG. C/W SQ. NUT	GTS-1309/71	-	4	4
55	HEAD WASHER	GTS-0836L	836L	10	10
56	END CASTING RIGHT HAND 100 LB. A.R.A.-A.	GTS-0846	CG2-S	2	2
57	END CASTING LEFT HAND 100 LB. A.R.A.-A.	GTS-0846	CG3-S	2	2
58	TAIL WASHER (BEVELLED)	GTS-0836H	836H	8	8
59	TAIL WASHER (NOT BEVELLED)	GTS-0836M	836M	2	2
60	ADJUSTABLE BLOCK 100 LB. A.R.A.-A.	GTS-0846	CG1-S	4	4
TURNOUT PACKAGES					
TURNOUT NUMBER	DESCRIPTION			QUANTITY PER TURNOUT	
GTS- 107A	FROG RBM 10-100			1	
	SW-PK INS SAMSON HO NO. 10A-100 LBS.			1	
	GR-PK 100 11'-0"			1	
	FR-PK RBM 10-100			1	
GTS- 107B	FROG RBM 10-100			1	
	SW-PK INS SAMSON HO NO. 10B-100 LBS.			1	
	GR-PK 100 11'-0"			1	
	FR-PK RBM 10-100			1	
ABBREAVATIONS					
SW - PK - SWITCH PAK		SAM - SAMSON		SGM - SELF GUARD MANGANESE	
FR - PK - FROG PAK		HO - HAND OPERATED		RBM - RAIL BOUND MANGANESE	
GR - PK - GUARD RAIL PAK		SO - SPRING OPERATED			
INS - INSULATED		PO - POWER OPERATED			
NOTE:					
1 - For a new installation, necessary rail, bonded insulated joints, splice bars, bolts, washers, rail anchors, connecting rod, switch stand, targe and reflectorized target kit may be required in addition to the materials listed above					
BILL OF SWITCH TIES FOR HAND AND SPRING OPERATION					
TIES 180 X 230 mm (7" X 9")				BILL OF SWITCH FOR POWER OPERATION	
				TIES 180 X 230 mm (7" X 9")	
LENGTH					
METRES		FEET/INCHES		NO. OF PIECES	
2.8		9' - 0"		19	
3.1		10' - 0"		10	
3.4		11' - 0"		7	
3.7		12' - 0"		6	
4		13' - 0"		6	
4.3		14' - 0"		6	
4.6		15' - 0"		6	
4.9		16' - 0"		8	
TOTAL NUMBER OF TIES - 68				TOTAL NUMBER OF TIES - 110	