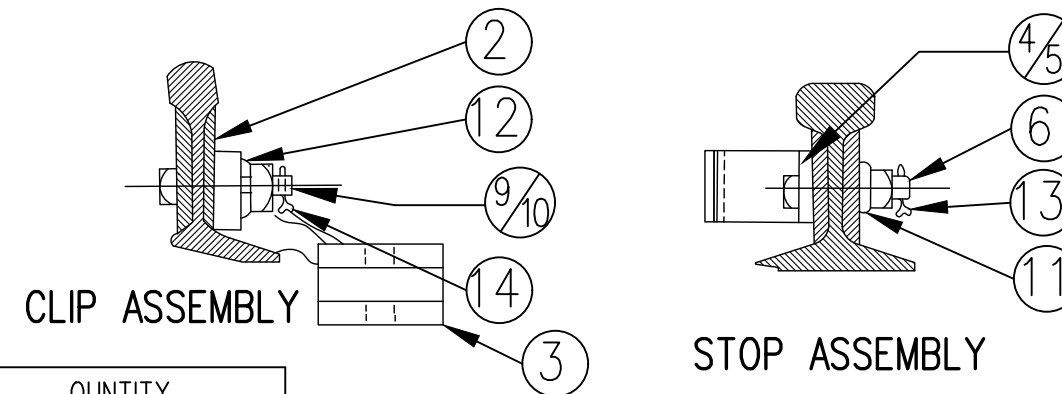
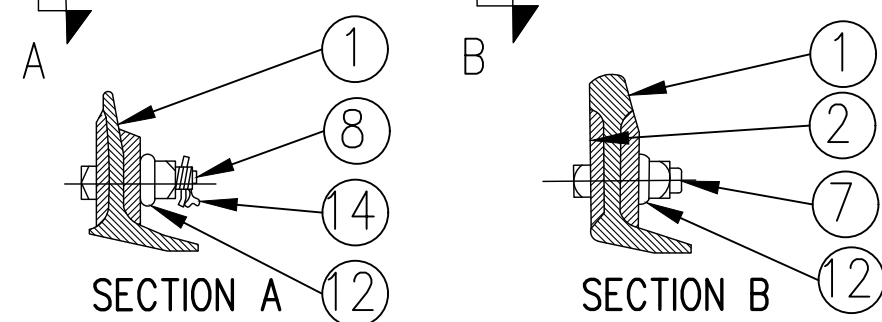


ASSEMBLY OF 22'-0" POINT RAIL

DRAWING NO. GTS-0327/B
LEFT HAND POINT RAIL



ITEM NO.	DESCRIPTION	STANDARD PLAN NO.	MARK NO.	QUANTITY	
				DWG.NO.GTS-0327	
				A	B
1	RIGHT POINT RAIL	R11C-506.1		1	-
	LEFT POINT RAIL			-	1
2	REINFORCING BAR 1/2" THK X 19'-0" LONG.	GTS-0342/H		2	2
3	SWITCH CLIP-RIGHT HAND	GTS-0338/3	338A-2	3	-
	SWITCH CLIP-LEFT HAND	GTS-0338/4	338B-2	-	3
4	STOP BLOCK#1	GTS-0339/K	K	1	1
5	STOP BLOCK#2	GTS-0339/L	L	1	1
6	3/4" DIA-10 UNC SQ.HD.BOLT X 4" LG.C/W SQ.NUT	GTS-1305/6		4	4
7	1" DIA-8 UNC SQ.HD.BOLT X 3-1/2" LG.C/W SQ.NUT	GTS-1309/13		16	16
8	1" DIA-8 UNC SQ.HD.BOLT X 3-1/2" LG.C/W SQ.NUT	GTS-1305/17		3	3
9	1" DIA-8 UNC SQ.HD.BOLT 4-1/4" LG.C/W SQ.NUT	GTS-1305/20		2	2
10	1" DIA-8 UNC SQ.HD.BOLT 4-1/2" LG.C/W SQ.NUT	GTS-1305/21		4	4
11	SPRING WASHER FOR 3/4" DIA BOLT	GTS-1301		4	4
12	SPRING WASHER FOR 1" DIA BOLT	GTS-1301		25	25
13	3/16" COTTER PIN X 1-1/4" LONG			4	4
14	1/4" COTTER PIN X 2" LONG			9	9

NOTES

CONVERSION FACTOR: 1 INCH=25.4mm, 1 FOOT=304.8mm
WHEN REFERRING TO POINT RAILS, DRAWING NO. MUST BE STATED AS A OR B INDICATE RIGHT OR LEFT HAND POINT:
A- RIGHT HAND POINT
B- LEFT HAND POINT (ILLUSTRATED)
REFERENCE: OLD POINT NOS. RP42 & LP42

METRIC CONVERSION: 1 inch=25.4mm, 1 foot=304.8mm

1	18/07/27	ADDED IMPERIAL TO METRIC CONVERSION NOTE	
No.	Date	Revision	By Approved
Standard/		ASSEMBLY 22'-0" POINT RAIL 115LB. R.E. RAIL	
Drawn	MG	Checked	GGS
Approved	<i>[Signature]</i> VP Engineering & Asset Management		
Date	DEC 15, 2017	Plan Number	GTS-0327
			Rev 1
REFERENCE: TS-327 A/B		Sheet 1 OF 1	